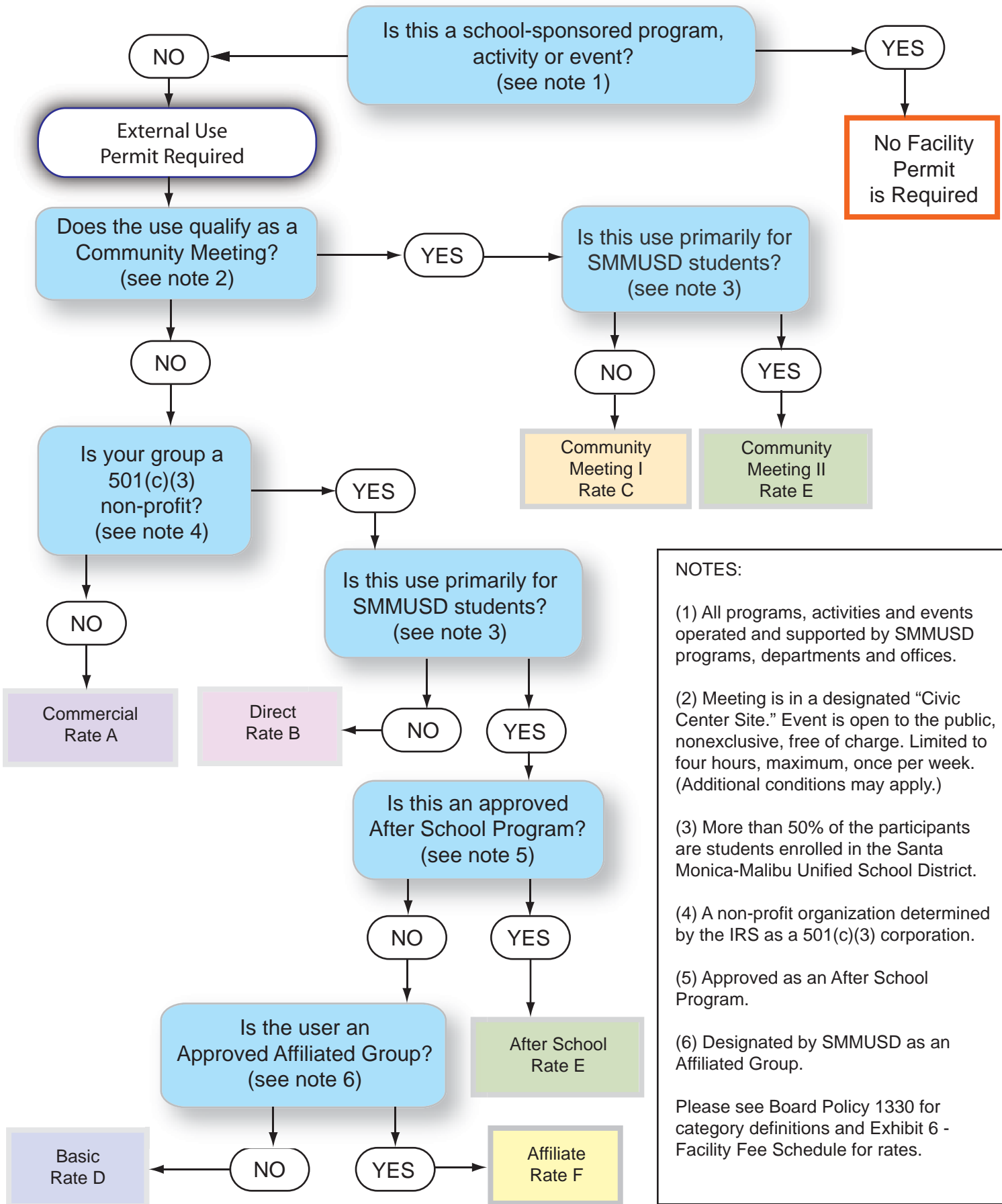


# What's My Category and Rate?



**NOTES:**

(1) All programs, activities and events operated and supported by SMMUSD programs, departments and offices.

(2) Meeting is in a designated "Civic Center Site." Event is open to the public, nonexclusive, free of charge. Limited to four hours, maximum, once per week. (Additional conditions may apply.)

(3) More than 50% of the participants are students enrolled in the Santa Monica-Malibu Unified School District.

(4) A non-profit organization determined by the IRS as a 501(c)(3) corporation.

(5) Approved as an After School Program.

(6) Designated by SMMUSD as an Affiliated Group.

Please see Board Policy 1330 for category definitions and Exhibit 6 - Facility Fee Schedule for rates.



SANTA MONICA-MALIBU UNIFIED SCHOOL DISTRICT

To rent a facility or acquire staff, please apply online:  
[www.smmusd.org/apply](http://www.smmusd.org/apply)

RATE A	RATE B	RATE C	RATE D	RATE E	RATE F
Commercial <i>Private businesses, Film studios, An individuals birthday party</i>	Direct <i>Nonprofit organizations 501(c)(3) organizations</i>	Community Meeting 1 <i>Open and available to the public, nonexclusive (open to everyone), limited 4 hours</i>	Basic <i>Primarily for SMMUSD students, but NOT approved Afterschool</i>	Community Meeting II & After School <i>Community Meeting for SMMUSD students or APPROVED After School Programs (application and preapproval by Superintendent required).</i>	Affiliate <i>Nonprofit, approved by SMMUSD as Affiliated group</i>
	Discount	Discount	Discount	Discount	Discount
-	40%	60%	80%	90%	100%

**School Rooms (Classrooms, Conference Rooms)**

Elementary

RATE A	RATE B	RATE C	RATE D	RATE E	RATE F
Commercial	Direct	Community Meeting 1	Basic	Community Meeting II & After School	Affiliate
\$38.00	\$22.80	\$15.20	\$7.60	\$3.80	\$0.00
\$44.00	\$26.40	\$17.60	\$8.80	\$4.40	\$0.00
\$53.00	\$31.80	\$21.20	\$10.60	\$5.30	\$0.00

**Music, Choir, Arts, Auto Shops**

Elementary

RATE A	RATE B	RATE C	RATE D	RATE E	RATE F
Commercial	Direct	Community Meeting 1	Basic	Community Meeting II & After School	Affiliate
\$63.00	\$37.80	\$25.20	\$12.60	\$6.30	\$0.00
\$70.00	\$42.00	\$28.00	\$14.00	\$7.00	\$0.00
\$78.00	\$46.80	\$31.20	\$15.60	\$7.80	\$0.00

**Library, Computer Lab, Multipurpose Meeting Rooms**

Elementary

RATE A	RATE B	RATE C	RATE D	RATE E	RATE F
Commercial	Direct	Community Meeting 1	Basic	Community Meeting II & After School	Affiliate
\$60.00	\$36.00	\$24.00	\$12.00	\$6.00	\$0.00
\$75.00	\$45.00	\$30.00	\$15.00	\$7.50	\$0.00
\$95.00	\$57.00	\$38.00	\$19.00	\$9.50	\$0.00

**Cafeterias**

Elementary

RATE A	RATE B	RATE C	RATE D	RATE E	RATE F
Commercial	Direct	Community Meeting 1	Basic	Community Meeting II & After School	Affiliate
\$92.00	\$55.20	\$36.80	\$18.40	\$9.20	\$0.00
\$120.00	\$85.74	\$48.00	\$24.00	\$12.00	\$0.00
\$150.00	\$90.00	\$60.00	\$30.00	\$15.00	\$0.00

	RATE A	RATE B	RATE C	RATE D	RATE E	RATE F
<b>Kitchens</b> (Personnel needed to operate kitchen equipment)	Commercial	Direct	Community Meeting 1	Basic	Community Meeting II & After School	Affiliate
Elementary	\$65.00	\$39.00	NA	\$13.00	NA	\$0.00
Middle	\$85.00	\$51.00	NA	\$17.00	NA	\$0.00
High Schools	\$125.00	\$75.00	NA	\$25.00	NA	\$0.00

	RATE A	RATE B	RATE C	RATE D	RATE E	RATE F
<b>Gyms/Gym Rooms</b>	Commercial	Direct	Community Meeting 1	Basic	Community Meeting II & After School	Affiliate
Lincoln MS Gym, practice	\$98.00	\$58.80	\$39.20	\$19.60	\$9.80	\$0.00
Lincoln MS Gym, game	\$145.00	\$87.00	NA	\$29.00	\$14.50	\$0.00
Lincoln MS Gym, event	\$260.00	\$156.00	NA	\$52.00	\$26.00	\$0.00
Adams MS Gym, practice	\$98.00	\$58.80	\$39.20	\$19.60	\$9.80	\$0.00
Adams MS Gym, game	\$145.00	\$87.00	NA	\$29.00	\$14.50	\$0.00
Adams MS Gym, event	\$260.00	\$156.00	NA	\$52.00	\$26.00	\$0.00
Malibu Old Gym, practice	\$98.00	\$58.80	\$39.20	\$19.60	\$9.80	\$0.00
Malibu Old Gym, game	\$145.00	\$87.00	NA	\$29.00	\$14.50	\$0.00
Malibu Old Gym, event	\$260.00	\$156.00	NA	\$52.00	\$26.00	\$0.00
Malibu New Gym (3 courts), practice	\$120.00	\$72.00	NA	NA	\$12.00	\$0.00
Malibu New Gym (3 courts), game	\$180.00	\$108.00	NA	NA	\$18.00	\$0.00
Malibu New Gym, event	\$360.00	\$216.00	NA	NA	\$36.00	\$0.00
Samohi, North Gym (1 court), practice	\$120.00	\$72.00	NA	NA	\$12.00	\$0.00
Samohi, North Gym (1 court), game	\$180.00	\$108.00	NA	NA	\$18.00	\$0.00
Samohi, North Gym, event	\$360.00	\$216.00	NA	NA	\$36.00	\$0.00
Samohi, South Gym (3 courts), practice	\$98.00	\$58.80	\$39.20	\$19.60	\$9.80	\$0.00
Samohi, South Gym (3 courts), game	\$145.00	\$87.00	NA	\$29.00	\$14.50	\$0.00
Samohi, South Gym, event	\$360.00	\$216.00	NA	\$72.00	\$36.00	\$0.00
Samohi, North Gym Wrestling Room	\$115.00	\$69.00	NA	\$23.00	\$11.50	\$0.00
Samohi, South Gym Dance Room	\$90.00	\$54.00	NA	\$18.00	\$9.00	\$0.00

Sports Fields, Playgrounds, Courts	RATE A	RATE B	RATE C	RATE D	RATE E	
	Commercial	Direct	Community Meeting 1	Basic	Community Meeting II & After School	
Samohi, West Field (Football / Lacrosse / Soccer)	\$120.00	\$72.00	NA	\$24.00	NA	\$0.00
Samohi, West Field (Track Included), Event	\$300.00	\$180.00	NA	NA	NA	\$0.00
Samohi, Sealy Field (Baseball & Softball)	\$120.00	\$72.00	NA	\$24.00	NA	\$0.00
Samohi, Sealy Field (Softball Only)	\$100.00	\$60.00	NA	\$20.00	NA	\$0.00
Samohi, Sealy Field Batting Cages	\$60.00	\$36.00	NA	\$12.00	NA	\$0.00
Samohi, Sealy Field, Event	\$300.00	\$180.00	NA	NA	NA	\$0.00
Malibu HS, Main Field (Football / Lacrosse / Soccer)	\$120.00	\$72.00	NA	\$24.00	NA	\$0.00
Malibu HS, Main Field (Track Included) Event	\$300.00	\$180.00	NA	NA	NA	\$0.00
Malibu HS, Baseball/Softball Fields	\$120.00	\$72.00	NA	\$24.00	NA	\$0.00
Malibu HS, Upper Auxiliary Field	\$80.00	\$48.00	NA	\$16.00	NA	\$0.00
Malibu HS, Lower Auxiliary Field	\$80.00	\$48.00	NA	\$16.00	NA	\$0.00
Adams MS, North Field, Soccer*	\$100.00	\$60.00	NA	\$20.00	NA	\$0.00
Adams MS, South Field, Football/Soccer*	\$100.00	\$60.00	NA	\$20.00	NA	\$0.00
Adams MS, South Field, Softball/Baseball*	\$100.00	\$60.00	NA	\$20.00	NA	\$0.00
Adams MS, All Fields, Event	\$350.00	\$210.00	NA	NA	NA	\$0.00
Lincoln MS, Field, Football/Soccer	\$120.00	\$72.00	NA	\$24.00	NA	\$0.00
Lincoln MS, Field (Track Included), Event	\$300.00	\$180.00	NA	NA	NA	\$0.00
Elementary Playfield w/ restrooms	\$80.00	\$48.00	NA	\$16.00	\$8.00	\$0.00
Elementary Outdoor Court w/ restrooms	\$30.00	\$18.00	NA	\$6.00	\$3.00	\$0.00
Samohi, Outdoor Court, per court	\$30.00	\$18.00	NA	\$6.00	\$3.00	\$0.00
Malibu HS, Outdoor Court, per court	\$30.00	\$18.00	NA	\$6.00	\$3.00	\$0.00
Lincoln MS, Outdoor Court, per court	\$30.00	\$18.00	NA	\$6.00	\$3.00	\$0.00
Adams MS, Outdoor Court, per court	\$30.00	\$18.00	NA	\$6.00	\$3.00	\$0.00
*FIELD LIGHTS AS NEEDED, per hour	\$50.00	\$30.00	NA	\$30.00	NA	\$0.00

	RATE A	RATE B	RATE C	RATE D	RATE E	RATE F
<b>Running Track (Track events must include field)</b>	Commercial	Direct	Community Meeting 1	Basic	Community Meeting II & After School	Affiliate
Samohi, practice*	\$60.00	\$36.00	NA	\$12.00	NA	\$0.00
Samohi, meet* (Includes Infield, Jumps, and Shotput)	\$180.00	\$108.00	NA	\$36.00	NA	\$0.00
Malibu HS, practice	\$60.00	\$36.00	NA	\$12.00	NA	\$0.00
Malibu HS, meet (Includes Infield, Jumps, and Shotput)	\$180.00	\$108.00	NA	\$36.00	NA	\$0.00
Lincoln MS, practice	\$50.00	\$30.00	NA	\$10.00	NA	\$0.00
Lincoln MS, meet (Includes Infield)	\$150.00	\$90.00	NA	\$30.00	NA	\$0.00
*FIELD LIGHTS AS NEEDED, per hour	\$40.00	\$30.00	NA	\$30.00	NA	\$0.00

	RATE A	RATE B	RATE C	RATE D	RATE E	RATE F
<b>Tennis Courts</b>	Commercial	Direct	Community Meeting 1	Basic	Community Meeting II & After School	Affiliate
Samohi, Practice and Recreational Play, per court	\$10.00	\$6.00	NA	\$2.00	NA	\$0.00
Samohi, Tournament or Private Instruction, per court	\$25.00	\$15.00	NA	\$5.00	NA	\$0.00
Malibu HS, Practice and Recreational Play, per court	\$10.00	\$6.00	NA	\$2.00	NA	\$0.00
Malibu HS, Tournament or Private Instruction, per court	\$25.00	\$15.00	NA	\$5.00	NA	\$0.00
Adams MS, Practice and Recreational Play, per court	\$10.00	\$6.00	NA	\$2.00	NA	\$0.00
Adams MS, Tournament or Private Instruction, per court	\$25.00	\$15.00	NA	\$5.00	NA	\$0.00

	RATE A	RATE B	RATE C	RATE D	RATE E	RATE F
<b>Swimming Pools, w/access to locker rooms and restrooms</b>	Commercial	Direct	Community Meeting 1	Basic	Community Meeting II & After School	Affiliate
SAMOHI POOL, 50 M All Lanes, Practice and Rec	\$360.00	\$216.00	N/A	\$72.00	N/A	\$0.00
SAMOHI POOL, 50 M All Lanes, Meet and Game	\$500.00	\$300.00	N/A	\$100.00	N/A	\$0.00
SAMOHI POOL, 50 M Per Lane, Practice (2 lane minimum)	\$60.00	\$36.00	N/A	\$12.00	N/A	\$0.00
SAMOHI POOL, 25 M All Lanes, Practice and Rec	\$200.00	\$120.00	N/A	\$40.00	N/A	\$0.00
SAMOHI POOL, 25 M All Lanes, Meet and Game	\$300.00	\$120.00	N/A	\$60.00	N/A	\$0.00
SAMOHI POOL, 25 M Per Lane, Practice (2 lane minimum)	\$40.00	\$24.00	N/A	\$8.00	N/A	\$0.00

Lincoln MS (6 lanes), for Practice and Recreational Swim, per hour	\$138.00	\$82.80	NA	\$27.60	\$13.80	\$0.00
Lincoln MS (3 lanes), for Practice and Recreational Swim, per hour	\$80.00	\$48.00	NA	\$16.00	\$8.00	\$0.00
Lincoln MS (7 lanes), for Swim Meets and WP Games, per hour	\$184.00	\$110.40	NA	\$36.80	\$18.40	\$0.00
Malibu HS (8 lanes), for Practice and Recreational Swim, per hour	\$138.00	\$82.80	NA	\$27.60	NA	\$0.00
Malibu HS (4 lanes), for Practice and Recreational Swim, per hour	\$80.00	\$48.00	NA	\$16.00	NA	\$0.00
Malibu HS (2 lanes), for Practice and Recreational Swim, per hour	\$60.00	\$36.00	NA	\$12.00	NA	\$0.00
Malibu HS (8 lanes), for Swim Meets and WP Games, per hour	\$184.00	\$110.40	NA	\$36.80	NA	\$0.00

### Bullpen & Batting Cages

Per Batting Cage

Per bullpen

	RATE A	RATE B	RATE C	RATE D	RATE E	RATE F
Commercial	Direct	Community Meeting 1	Basic	Community Meeting II & After School	Affiliate	
Per Batting Cage	\$40.00	\$24.00	NA	\$8.00	NA	\$0.00
Per bullpen	\$60.00	\$36.00	NA	\$12.00	NA	\$0.00

### Quad Rental (events)

	RATE A	RATE B	RATE C	RATE D	RATE E	RATE F
Commercial	Direct	Community Meeting 1	Basic	Community Meeting II & After School	Affiliate	
Quad Rental (events)	\$360.00	\$216.00	NA	\$72.00	NA	\$0.00

### Parking (EVENT PARKING)

Event Parking, per space (permitted times)

Parking for Filming, per space (permitted times)

	RATE A	RATE B	RATE C	RATE D	RATE E	RATE F
Commercial	Direct	Community Meeting 1	Basic	Community Meeting II & After School	Affiliate	
Event Parking, per space (permitted times)	\$10.00	\$10.00	NA	\$10.00	NA	\$0.00
Parking for Filming, per space (permitted times)	\$20.00	\$20.00	NA	\$20.00	NA	\$0.00

AUDITORIUMS / CAFETERIUMS	RATE A		RATE B		RATE D		RATE C & E		RATE F	
	Commercial		Direct		Basic		Community Meeting 1 & 2 Afterschool		Affiliate	
	Performance	Rehearsal	Performance	Rehearsal	Performance	Rehearsal	4 Hour MAX		Performance	Rehearsal
Elementary, Full Day (12 hours)	\$1,462.00	\$877.20	\$1,169.60	\$701.76	\$877.20	\$526.32	NA	NA	\$0.00	\$0.00
Elementary, 1/2 Day (6 hours)	\$1,023.00	\$613.80	\$818.40	\$491.04	\$613.80	\$368.28	NA	NA	\$0.00	\$0.00
Lincoln MS, Full Day (12 hours)	\$2,783.00	\$1,669.80	\$2,226.40	\$1,335.84	\$1,669.80	\$1,001.88	NA	NA	\$0.00	\$0.00
Lincoln MS, 1/2 Day (6 hours)	\$1,948.00	\$1,168.80	\$1,558.40	\$935.04	\$1,168.80	\$701.28	NA	NA	\$0.00	\$0.00
JAMS PAC THEATER ONLY, Full Day	\$5,194.00	\$3,116.40	\$4,155.20	\$2,493.12	\$3,116.40	\$1,869.84	NA	NA	\$0.00	\$0.00
JAMS PAC THEATER ONLY, HALF DAY	\$3,653.00	\$2,191.80	\$2,922.40	\$1,753.44	\$2,191.80	\$1,315.08	NA	NA	\$0.00	\$0.00
JAMS PAC COMPLEX (Theater, Studio, Quad, Ticketing) FULL DAY	\$6,572.00	\$3,943.20	\$5,257.60	\$3,154.56	\$3,943.20	\$2,365.92	NA	NA	\$0.00	\$0.00
JAMS PAC COMPLEX (Theater, Studio, Quad, Ticketing) HALF DAY	\$4,600.00	\$2,760.00	\$3,680.00	\$2,208.00	\$2,760.00	\$1,656.00	NA	NA	\$0.00	\$0.00
JAMS Performance Studio (FULL DAY)	\$1,462.00	\$877.20	\$1,169.60	\$701.76	\$877.20	\$526.32	NA	NA	\$0.00	\$0.00
JAMS Performance Studio (1/2 day)	\$1,023.00	\$613.80	\$818.40	\$491.04	\$613.80	\$368.28	NA	NA	\$0.00	\$0.00
JAMS Performance Quad (FULL DAY)	\$848.00	\$508.80	\$678.40	\$407.04	\$508.80	\$305.28	NA	NA	\$0.00	\$0.00
JAMS Performance QUAD (1/2 Day)	\$593.00	\$355.80	\$474.40	\$284.64	\$355.80	\$213.48	NA	NA	\$0.00	\$0.00
Malibu HS, Full Day	\$2,075.00	\$1,245.00	\$1,660.00	\$996.00	\$1,245.00	\$747.00	NA	NA	\$0.00	\$0.00
Malibu HS, 1/2 Day	\$1,452.50	\$871.50	\$1,162.00	\$697.20	\$871.50	\$522.90	NA	NA	\$0.00	\$0.00
Barnum Hall, Full Day (Barnum Hall)	\$3,910.00	\$2,346.00	\$3,128.00	\$1,876.80	\$2,346.00	\$1,407.60	NA	NA	\$0.00	\$0.00
Samohi HS, 1/2 Day (Barnum Hall)	\$2,737.00	\$1,642.20	\$2,189.60	\$1,313.76	\$1,642.20	\$985.32	NA	NA	\$0.00	\$0.00

AMPHITHEATRES	Performance	Rehearsal	Performance	Rehearsal	Performance	Rehearsal	Performance	Rehearsal	Performance	Rehearsal
Samohi (Greek), Full Day	\$4,876.00	\$2,925.60	\$3,900.80	\$2,340.48	\$2,925.60	\$1,755.36	NA	NA	\$0.00	\$0.00
Samohi (Greek), 1/2 Day	\$3,413.00	\$2,047.80	\$2,730.40	\$1,638.24	\$2,047.80	\$1,228.68	NA	NA	\$0.00	\$0.00
Malibu HS, Full Day	\$1,706.00	\$1,023.60	\$1,364.80	\$818.88	\$1,023.60	\$614.16	NA	NA	\$0.00	\$0.00
Malibu HS, 1/2 Day	\$1,194.00	\$716.40	\$955.20	\$573.12	\$716.40	\$429.84	NA	NA	\$0.00	\$0.00

FILMING	Commercial Rate		Small Crew (<20 ppl / <6 hours)		Mini Film/Photo
	Filming	Prep	Filming	Prep	< 3 hrs, < 6 ppl
Full Day (school NOT in session)	\$4,876.00	\$3,175.00	N/A	N/A	N/A
Full Day (school IN session)	\$5,485.00	\$3,572.00	N/A	N/A	N/A
Half Day (school NOT in session)	\$2,996.00	\$2,097.00	\$2,132.00	\$1,492.00	\$862.00
Half Day (school IN session)	\$3,572.00	\$2,500.00	N/A	N/A	N/A
Additional Location Bump	\$550.00	\$300.00	\$250.00	\$125.00	N/A
SMMUSD does not have Non-profit or Student film rates					NO PARKING
FULL DAY = up to 12 hours; HALF DAY = up to 6 hours; inclusive (walk in to walk out) Overtime Rate for over 12 hours is 15% of rental rate per hour and all staff fees are doubled					