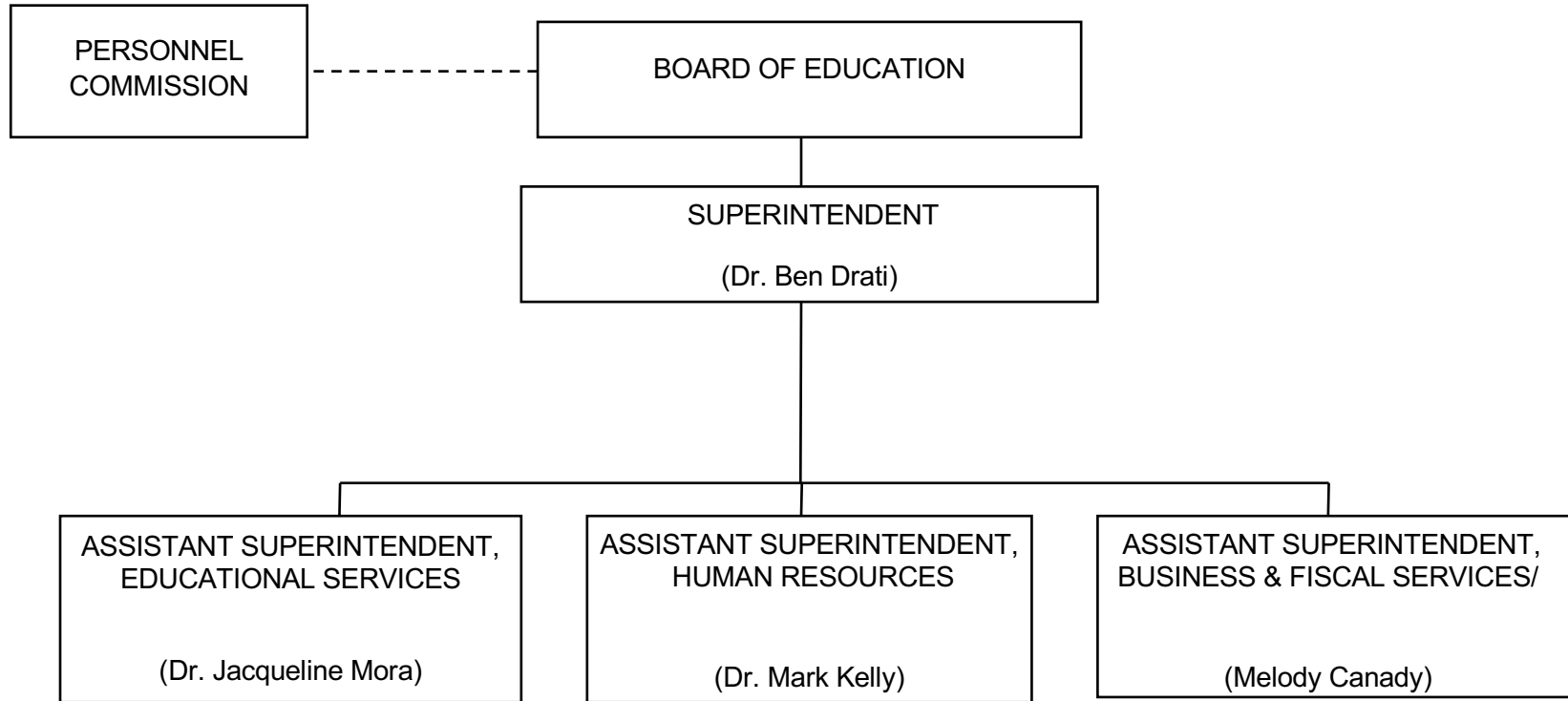


DISTRICT ORGANIZATION



BOARD OF EDUCATION

MEMBERS

Jon Kean, President
Laurie Lieberman, Vice President
Oscar de la Torre
Craig Foster
Maria Leon-Vazquez
Ralph Mechur
Richard Tahvildaran-Jesswein

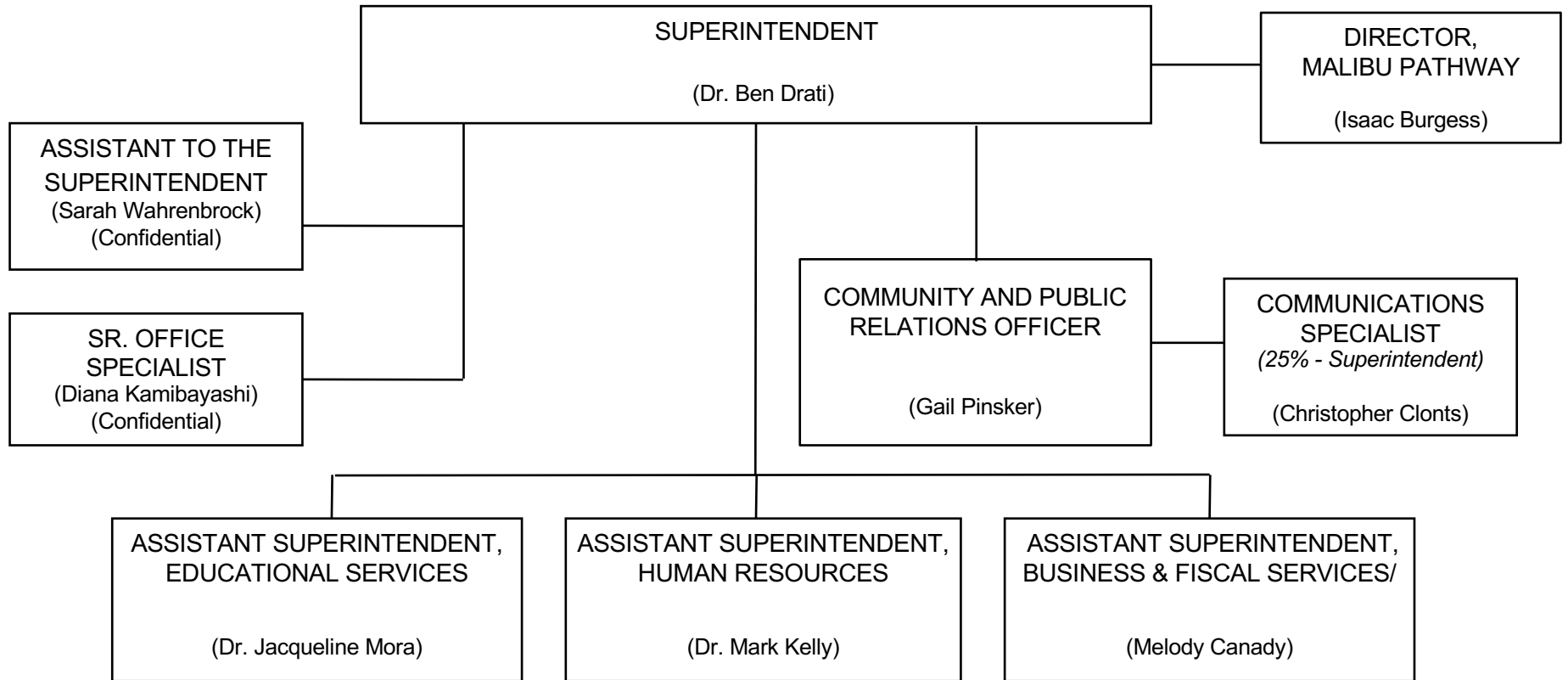
STUDENT MEMBERS

tbd– Santa Monica HS
Estelle Shah – Malibu HS
tbd – Olympic HS

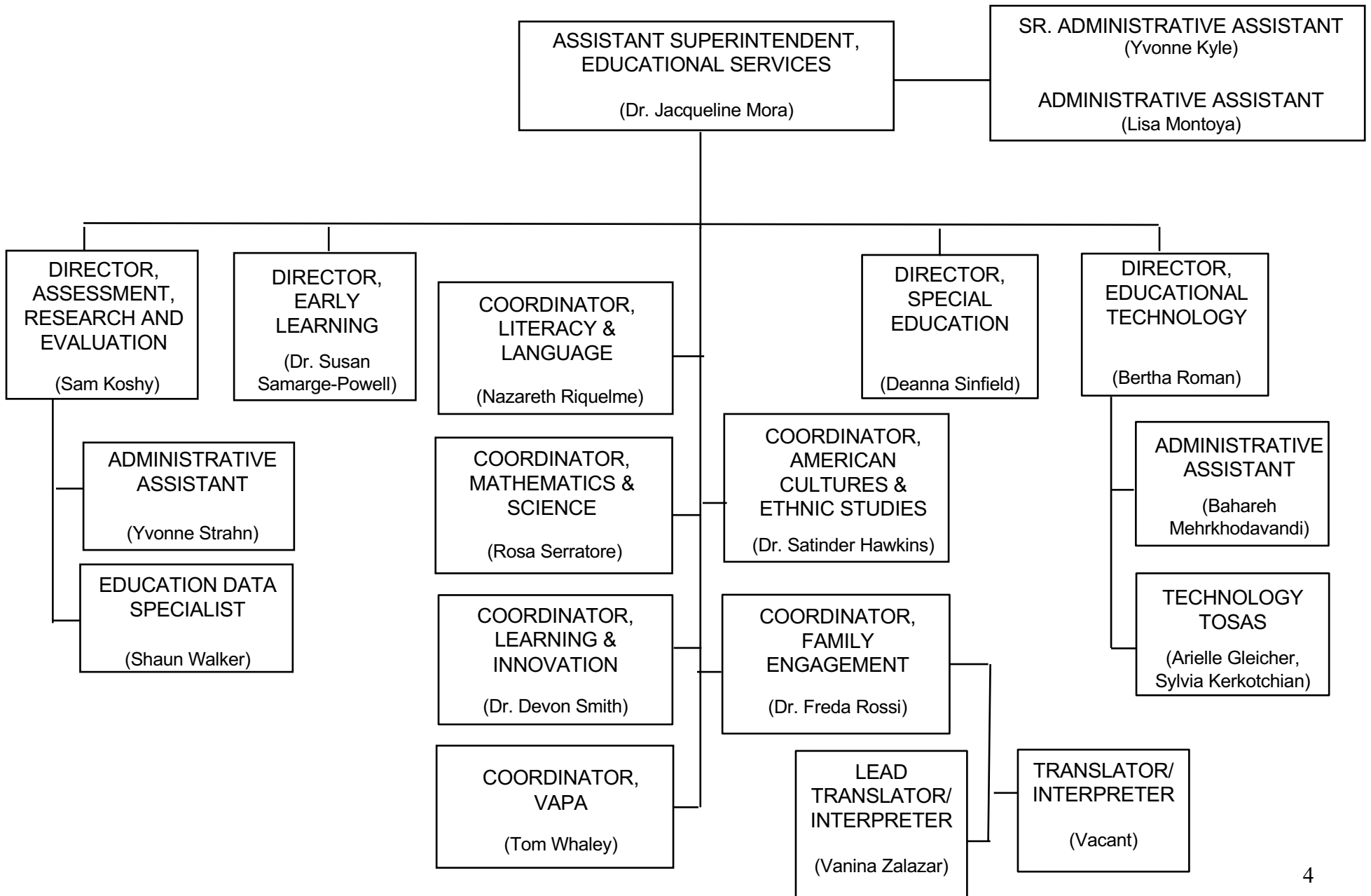
SUPERINTENDENT

(Dr. Ben Drati)

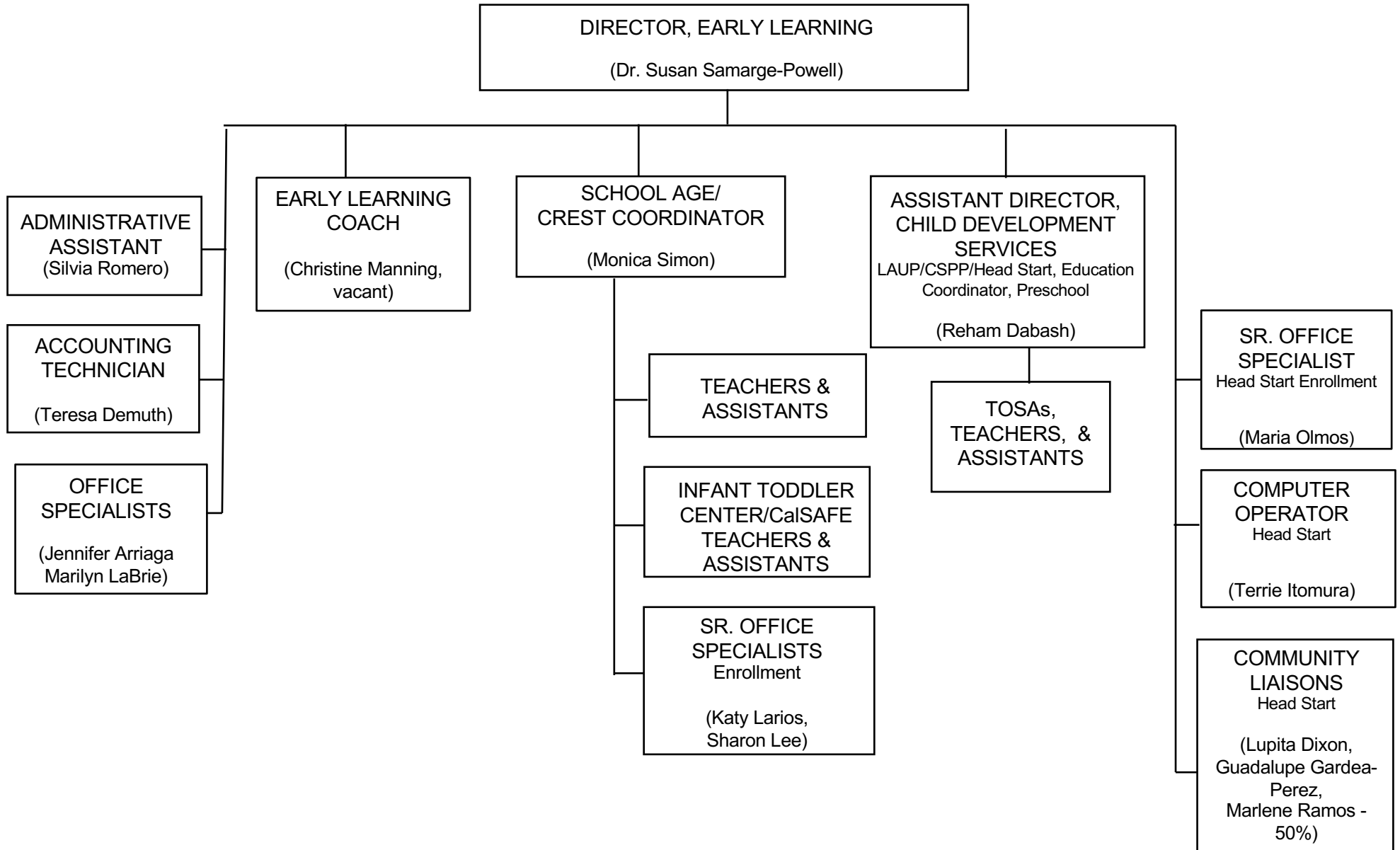
SUPERINTENDENT



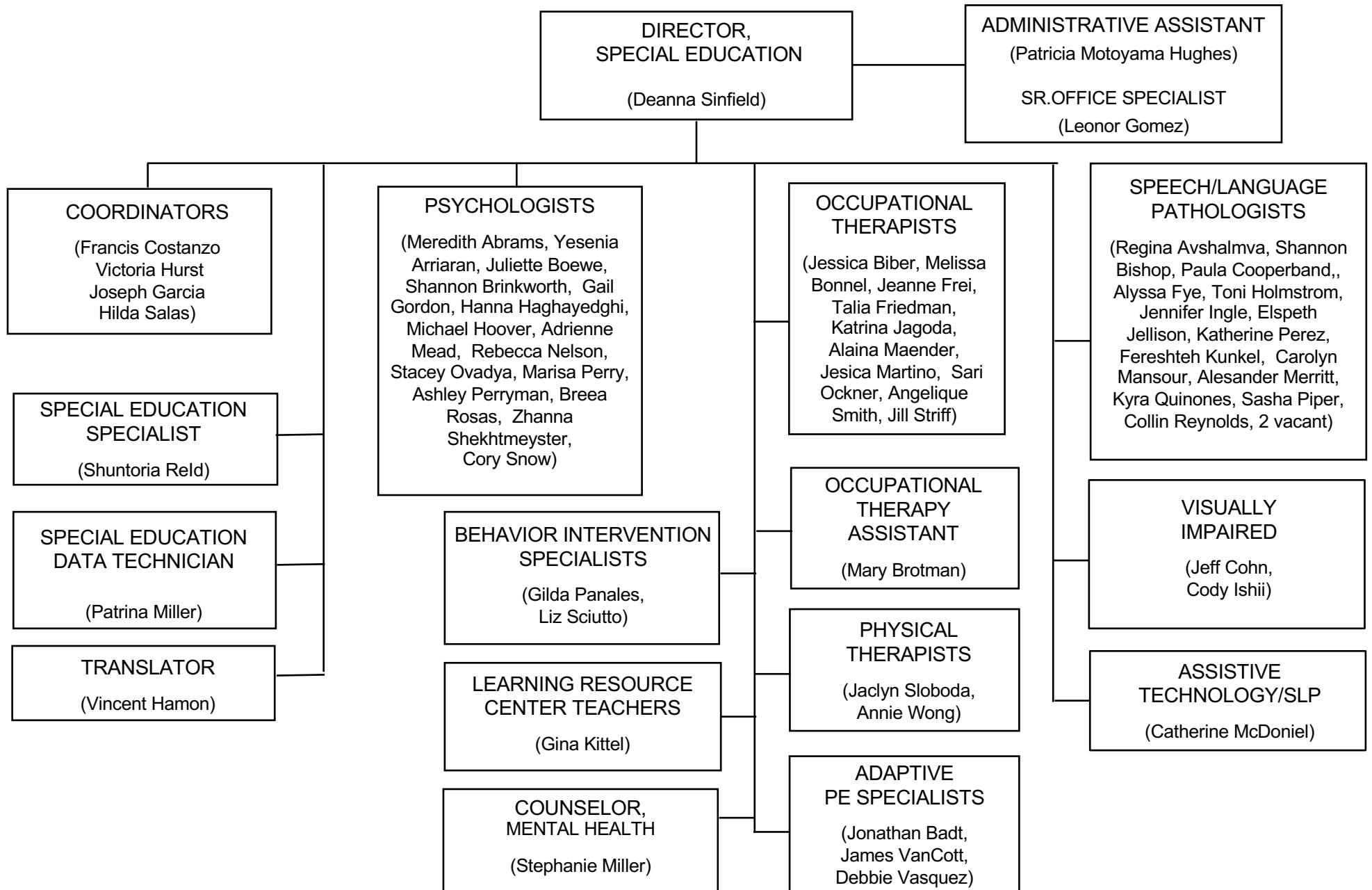
EDUCATIONAL SERVICES



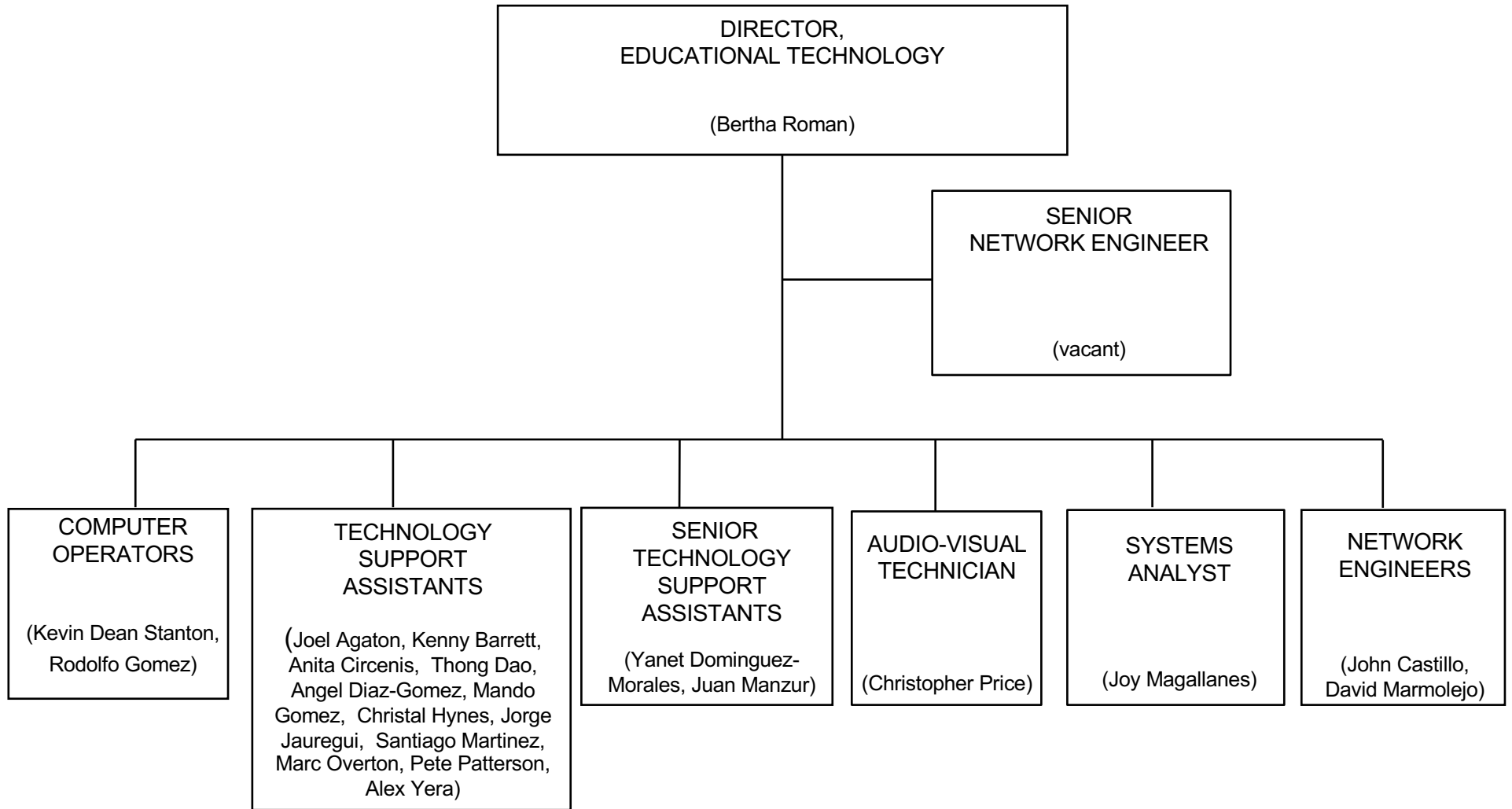
CHILD DEVELOPMENT SERVICES



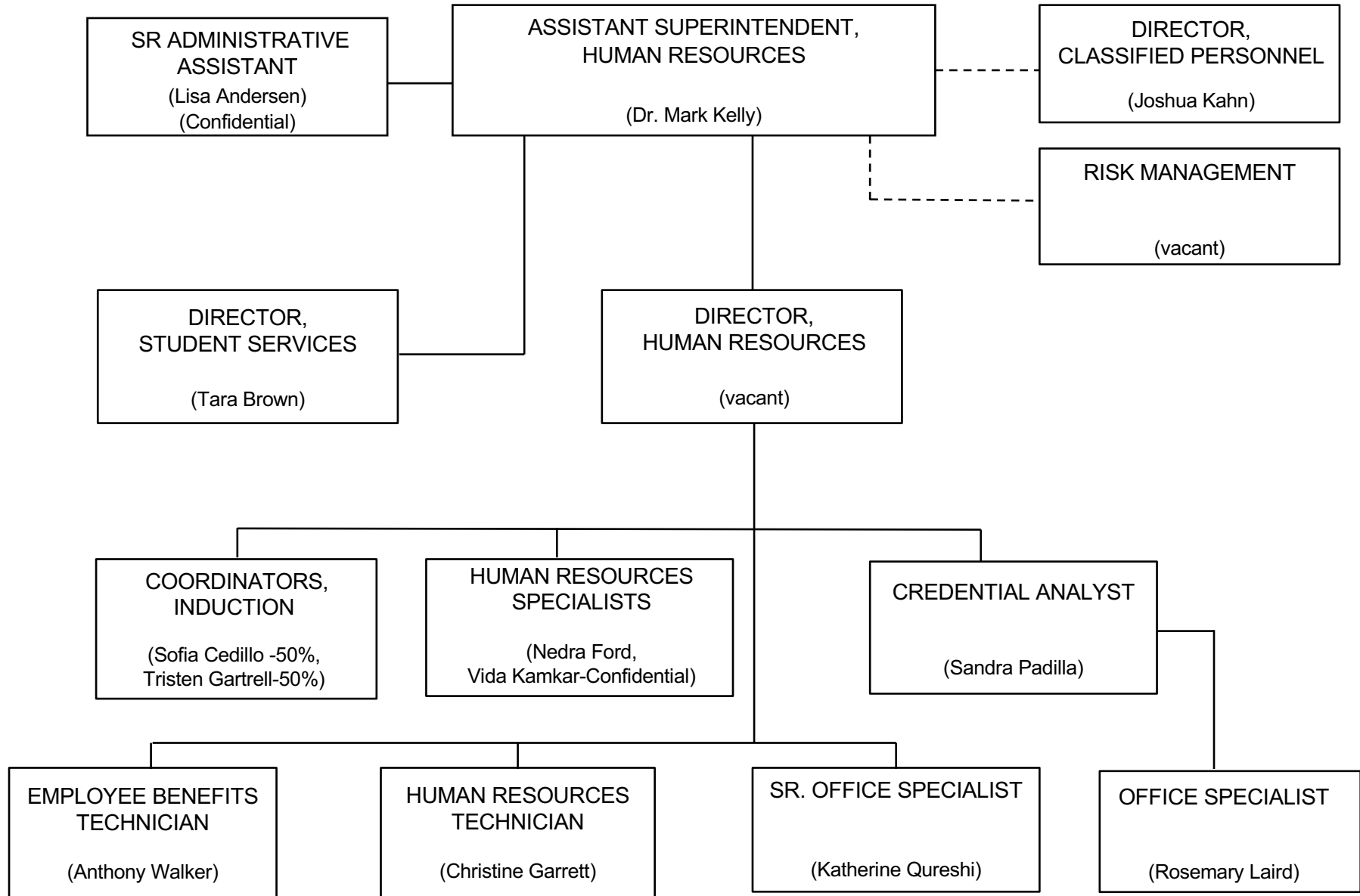
SPECIAL EDUCATION DEPARTMENT



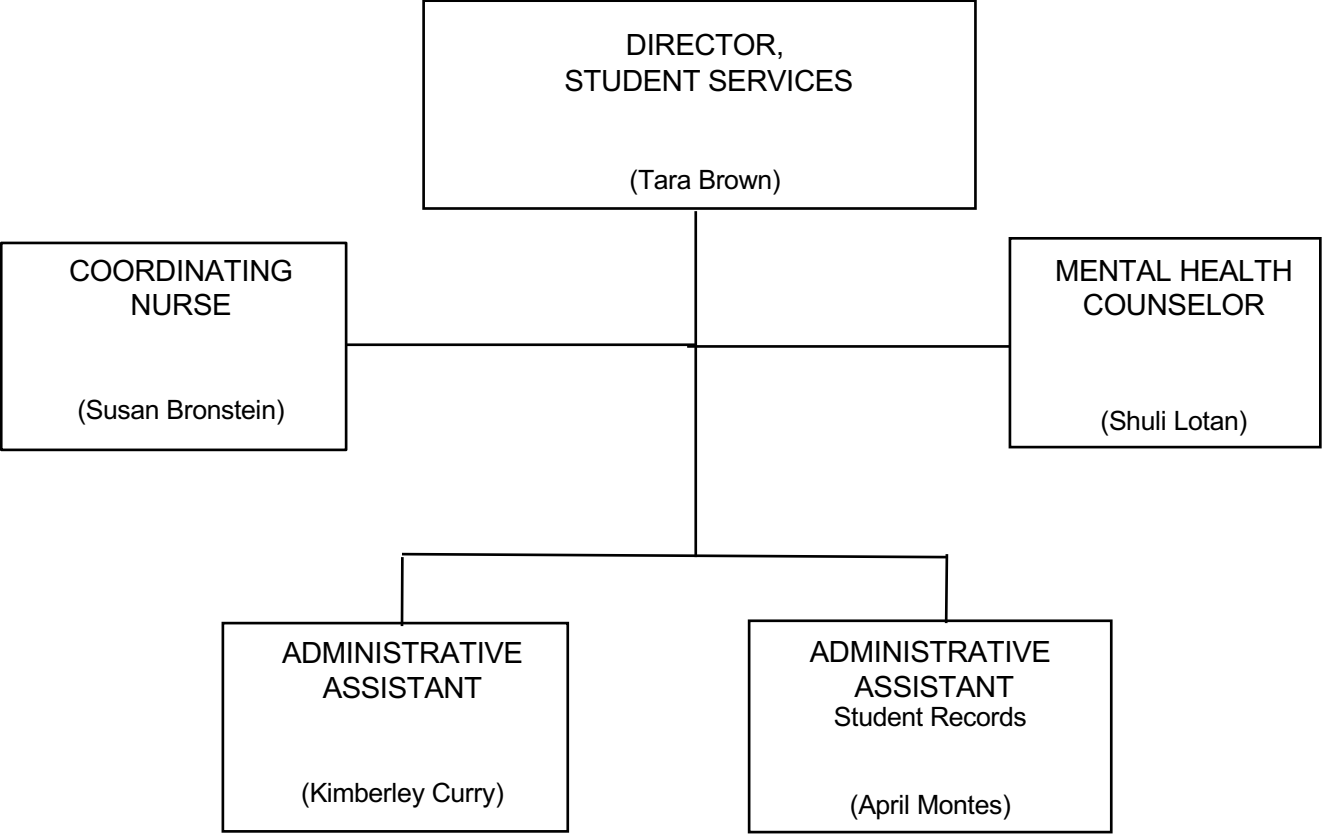
INFORMATION SERVICES



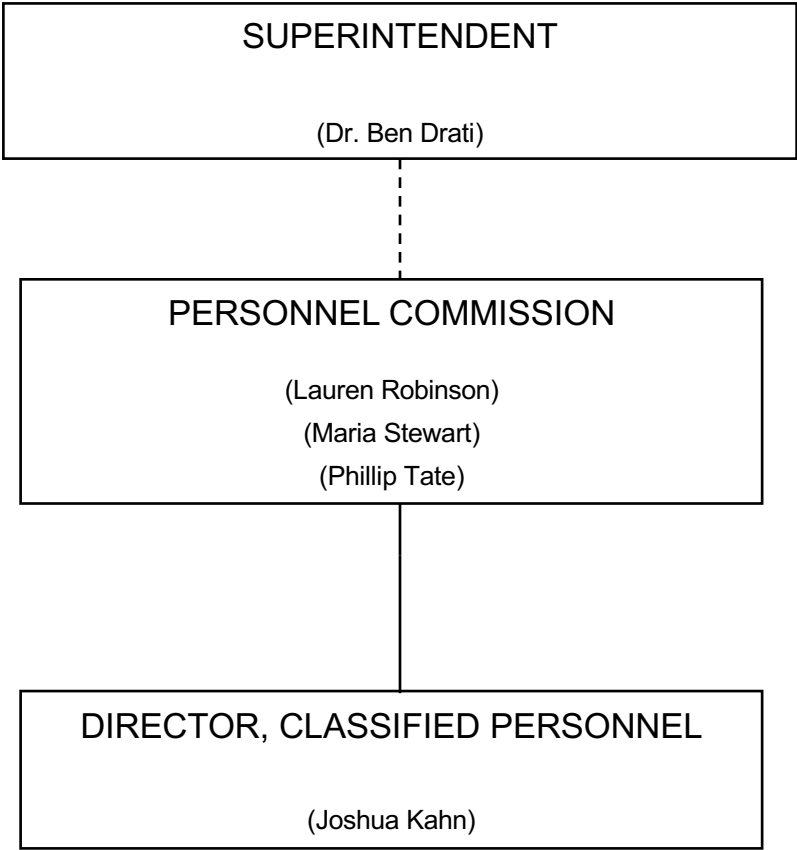
HUMAN RESOURCES



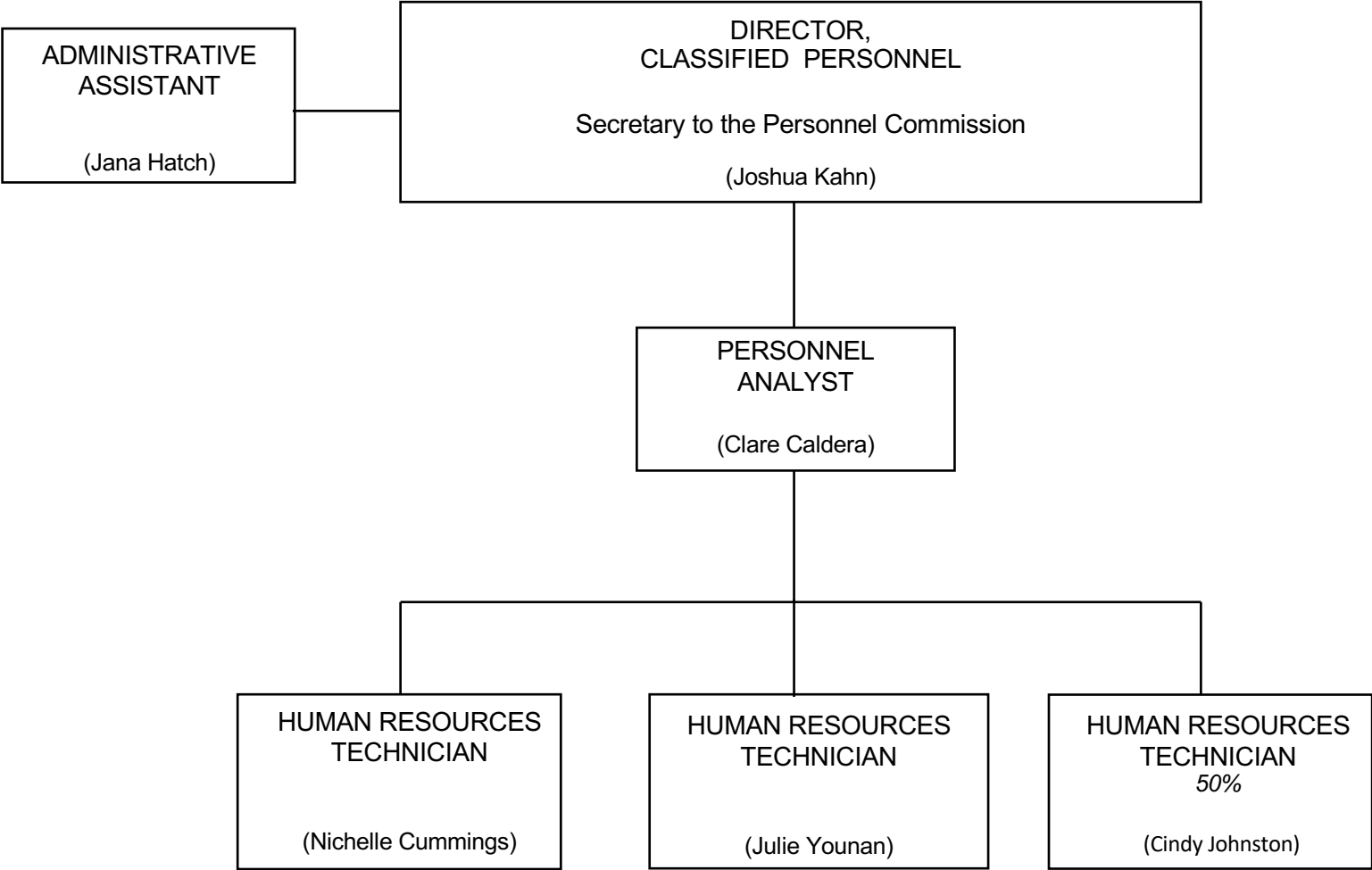
STUDENT SERVICES DEPARTMENT



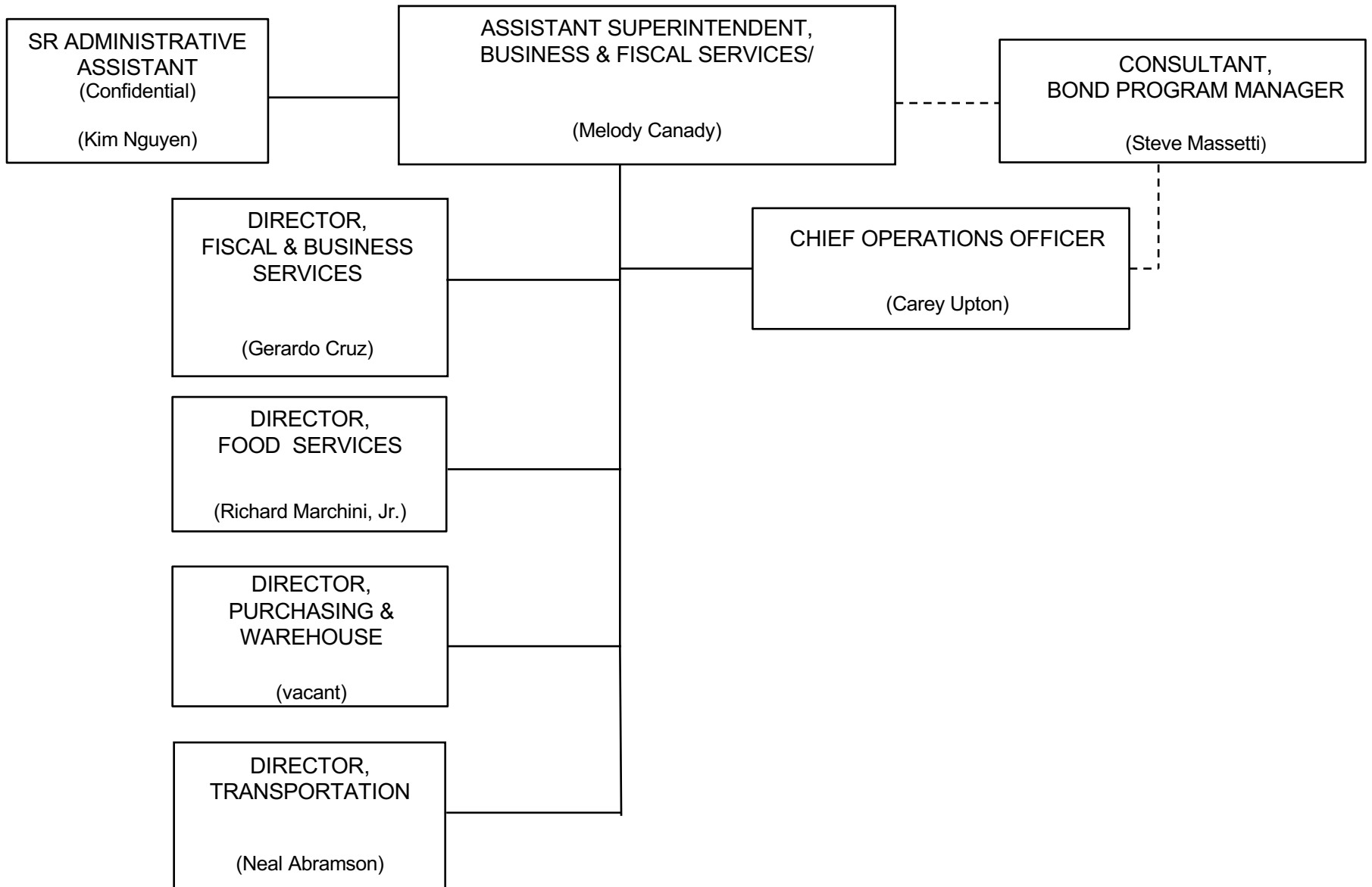
PERSONNEL COMMISSION



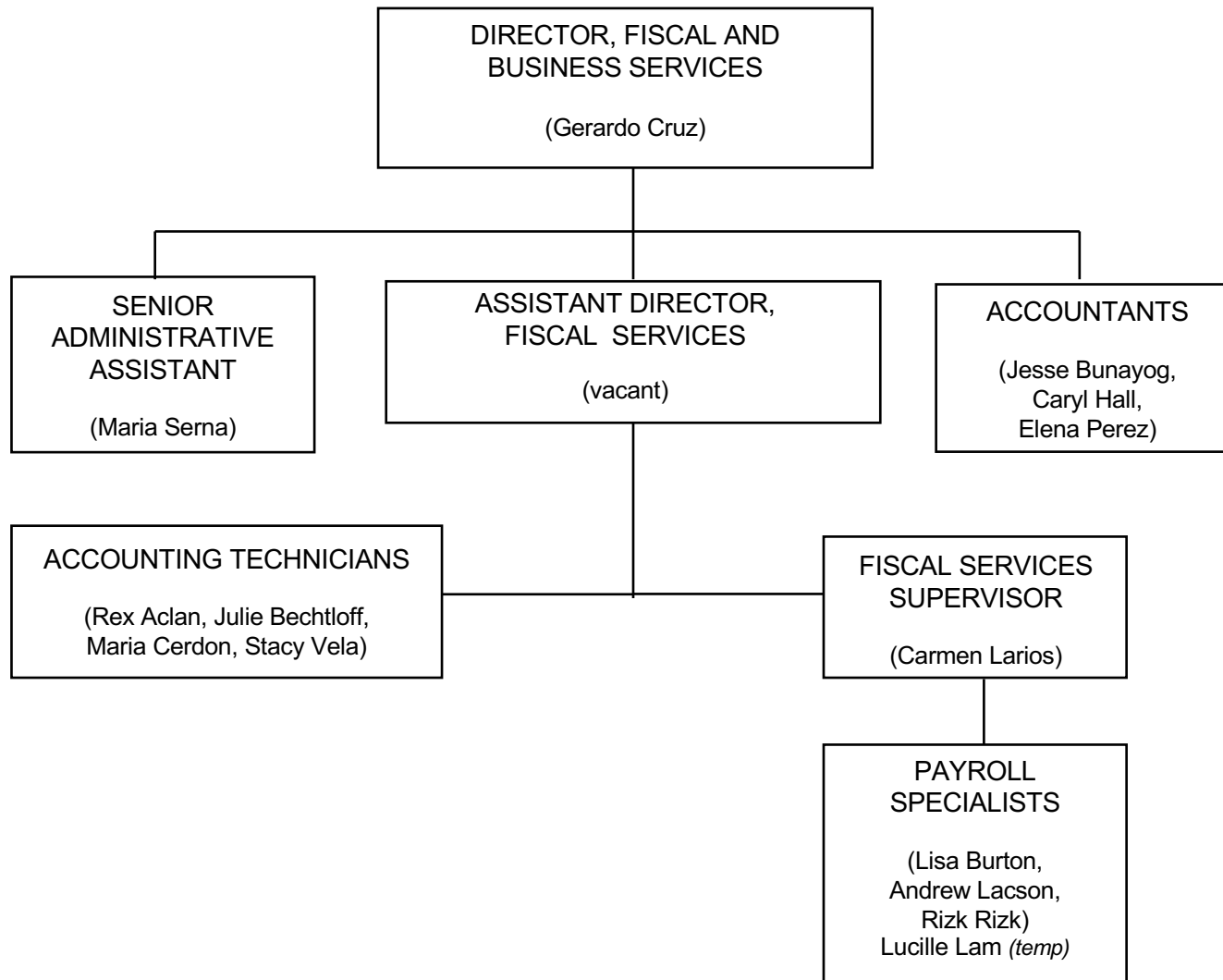
PERSONNEL COMMISSION



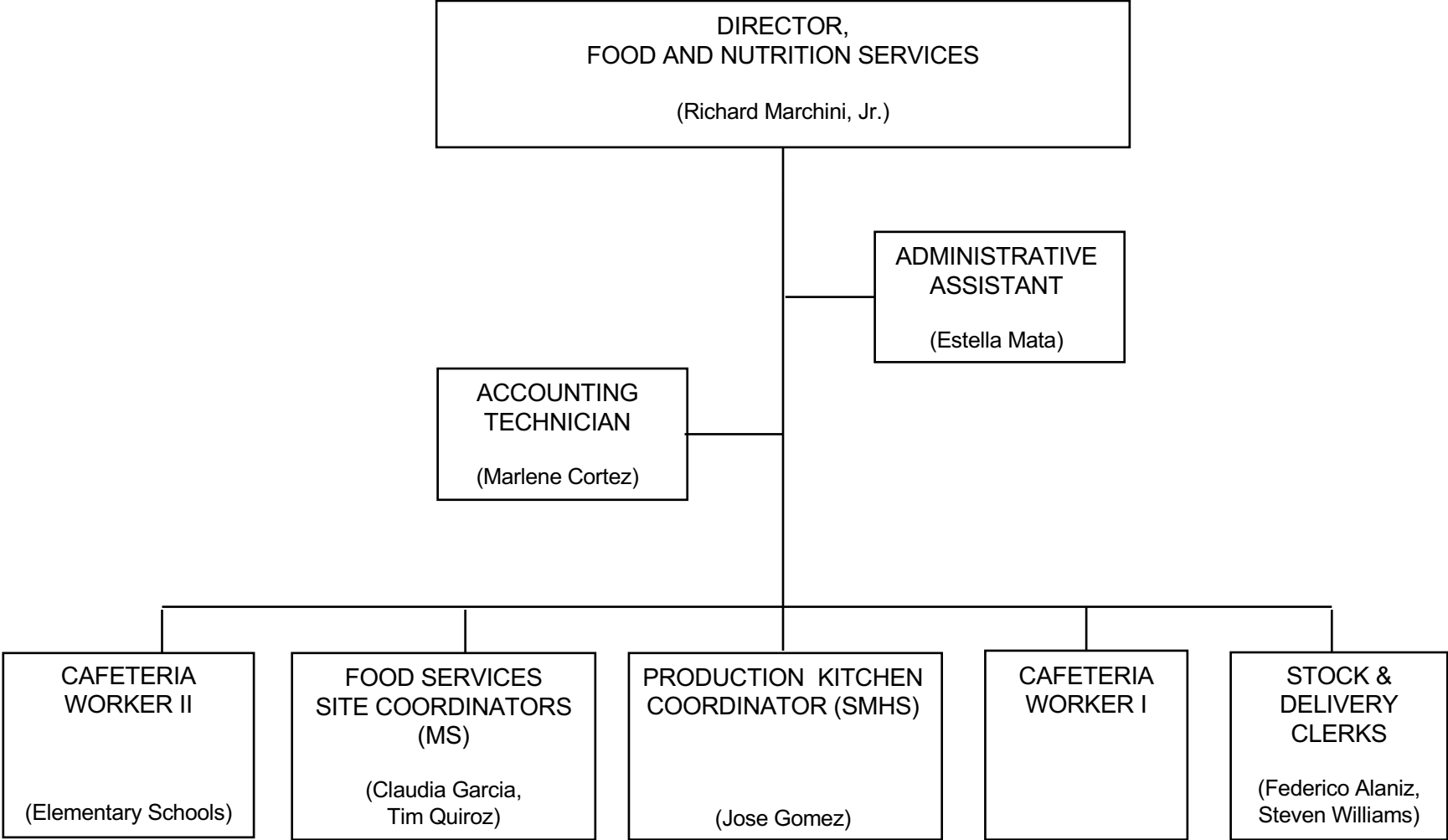
BUSINESS AND FISCAL SERVICES



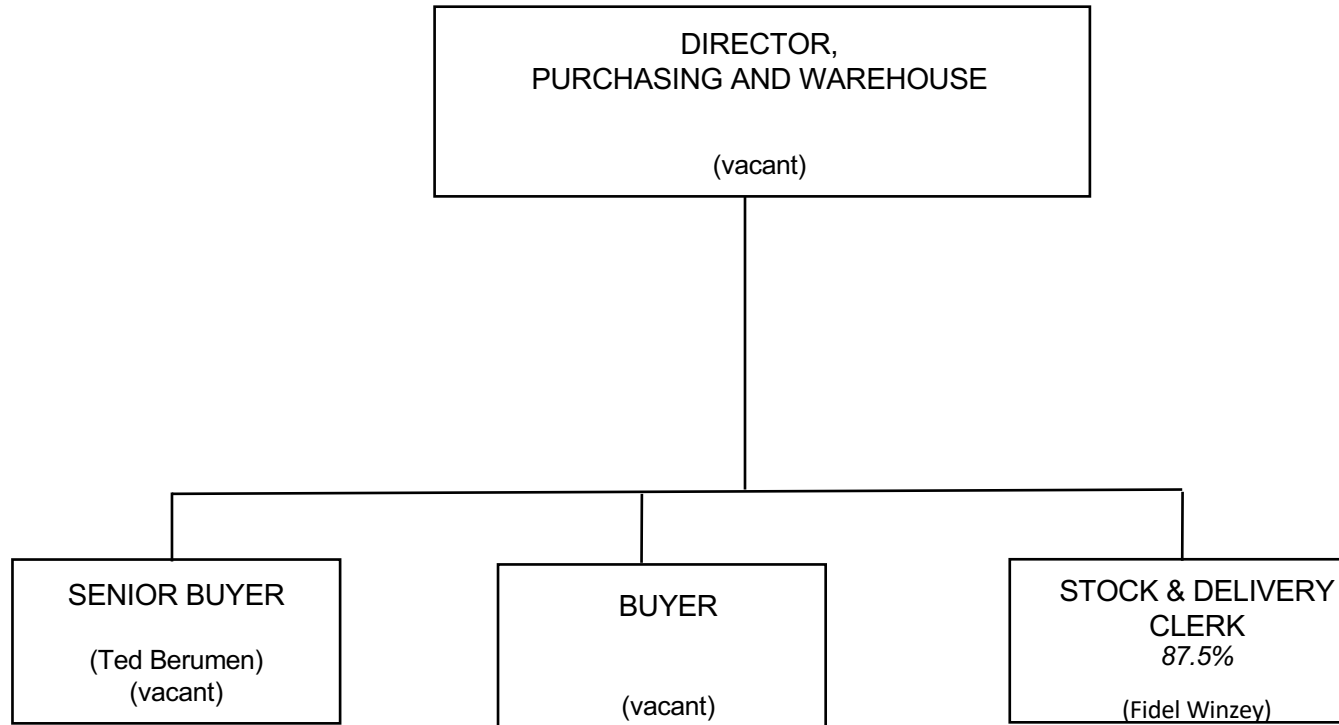
FISCAL AND BUSINESS SERVICES



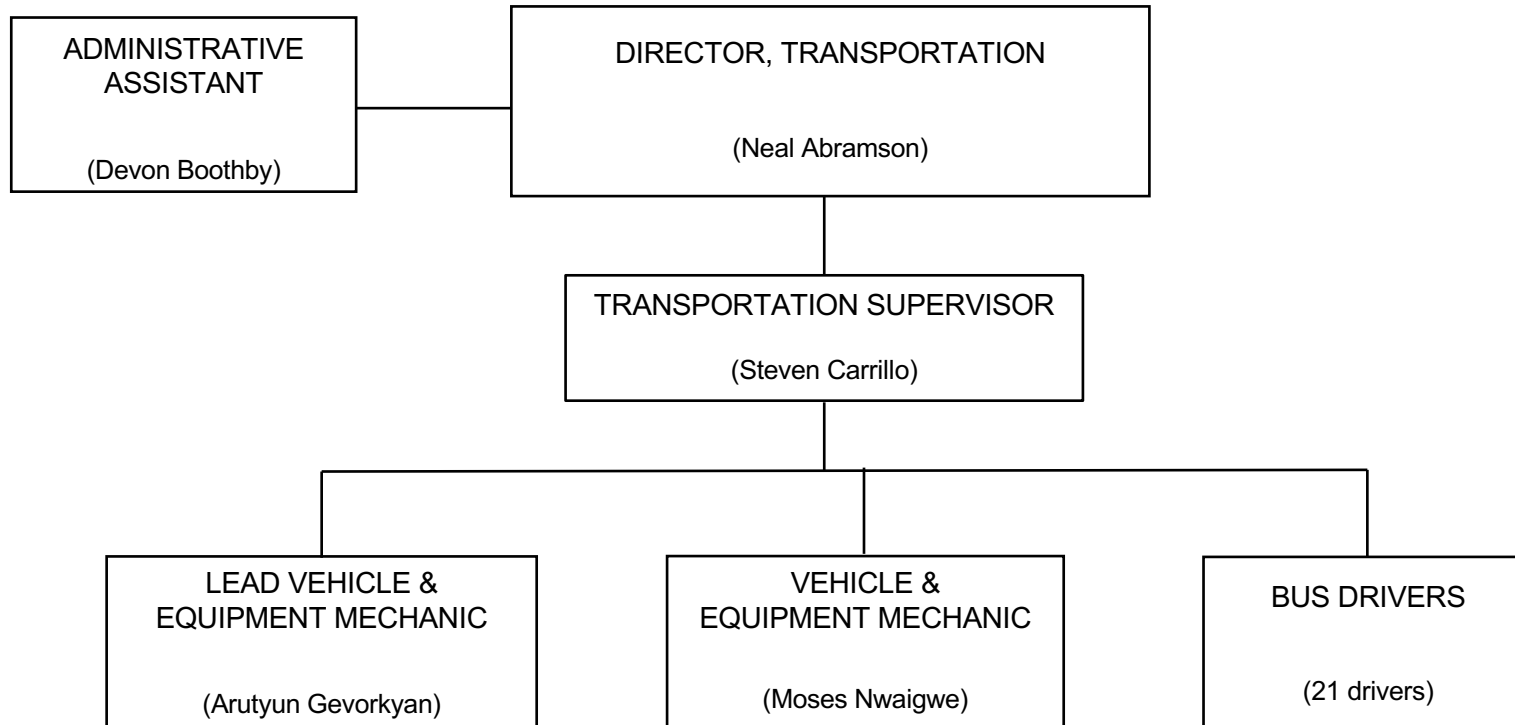
FOOD AND NUTRITION SERVICES



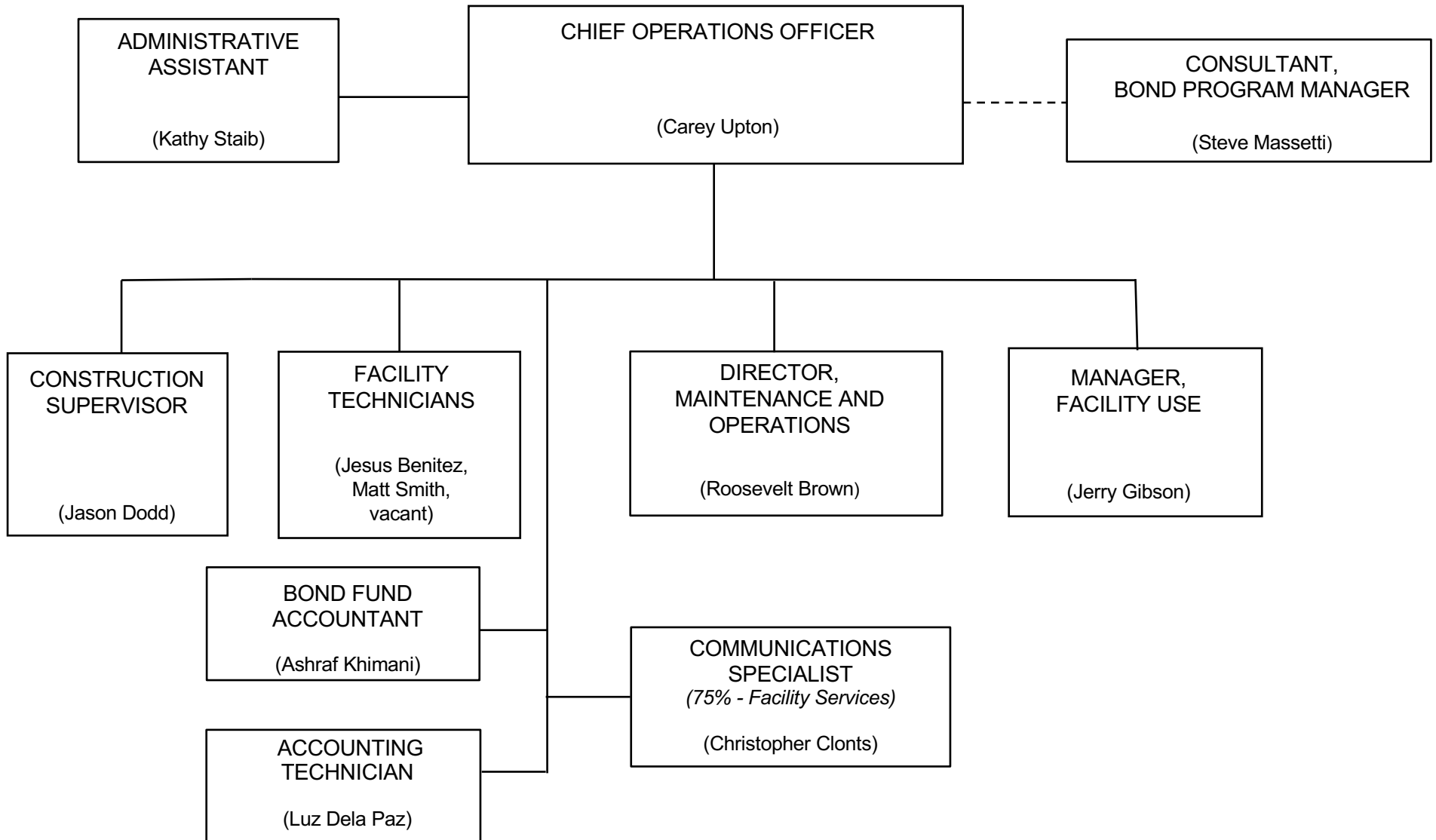
PURCHASING AND WAREHOUSE



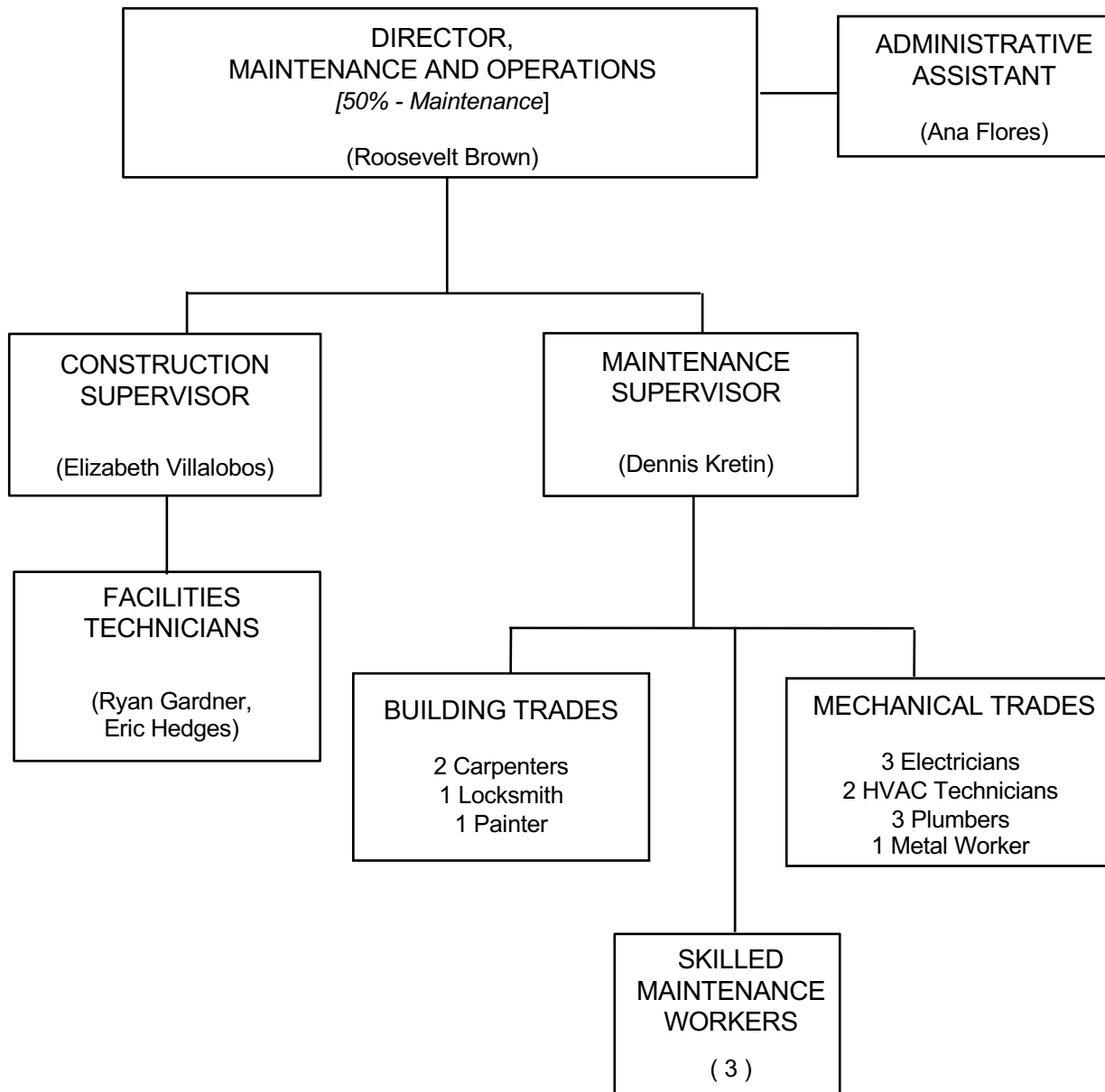
TRANSPORTATION



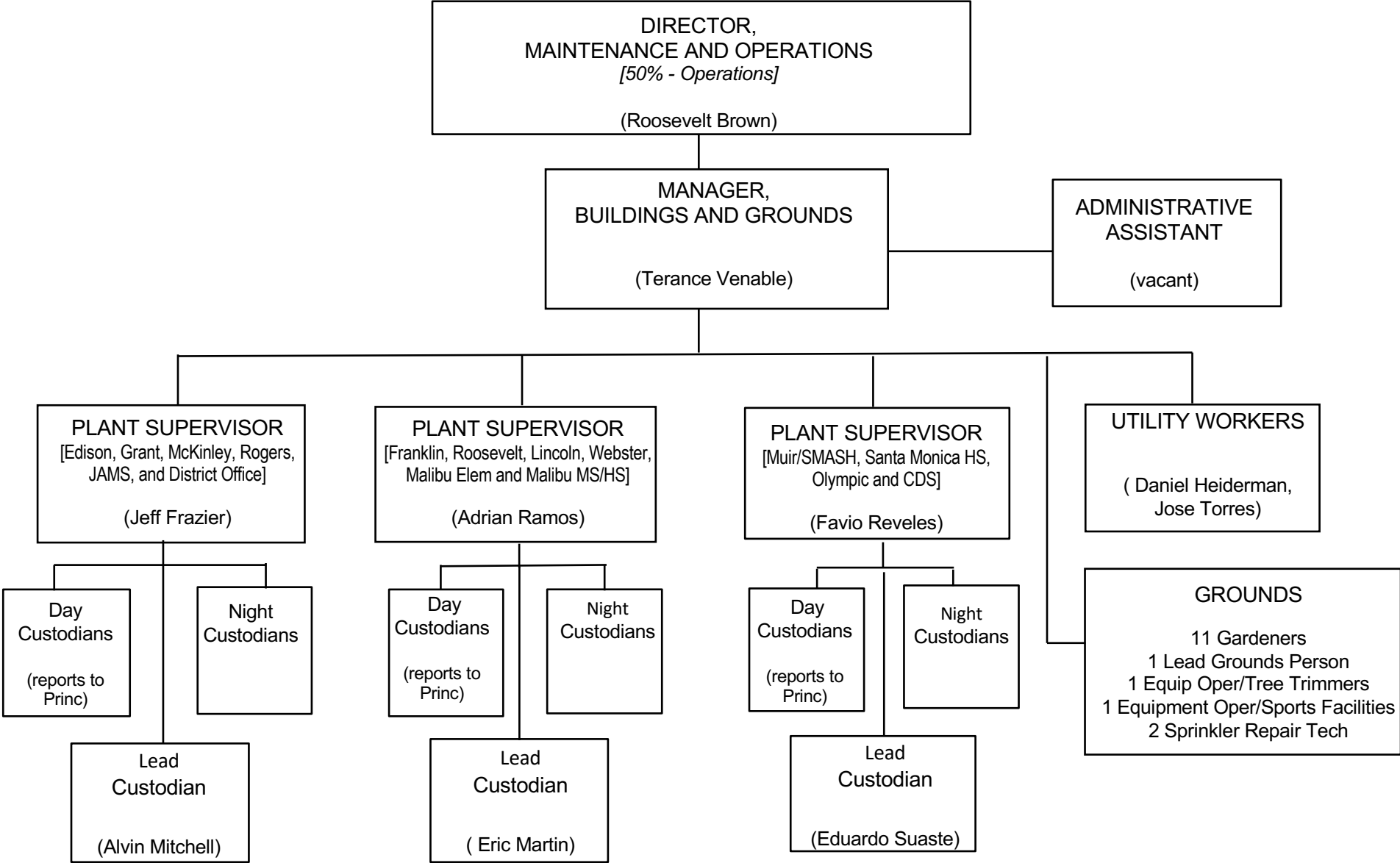
FACILITY SERVICES DIVISION



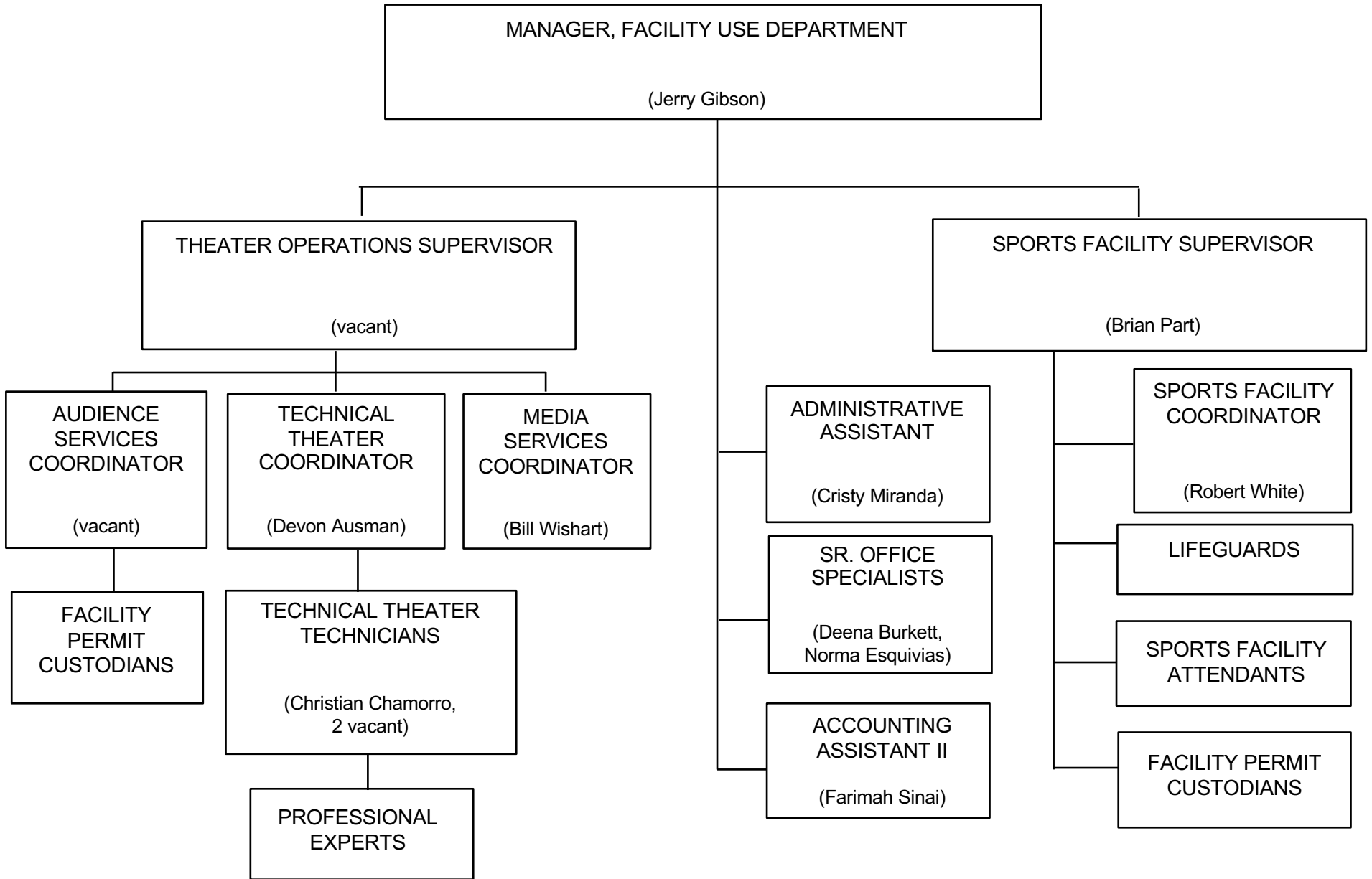
MAINTENANCE AND CONSTRUCTION



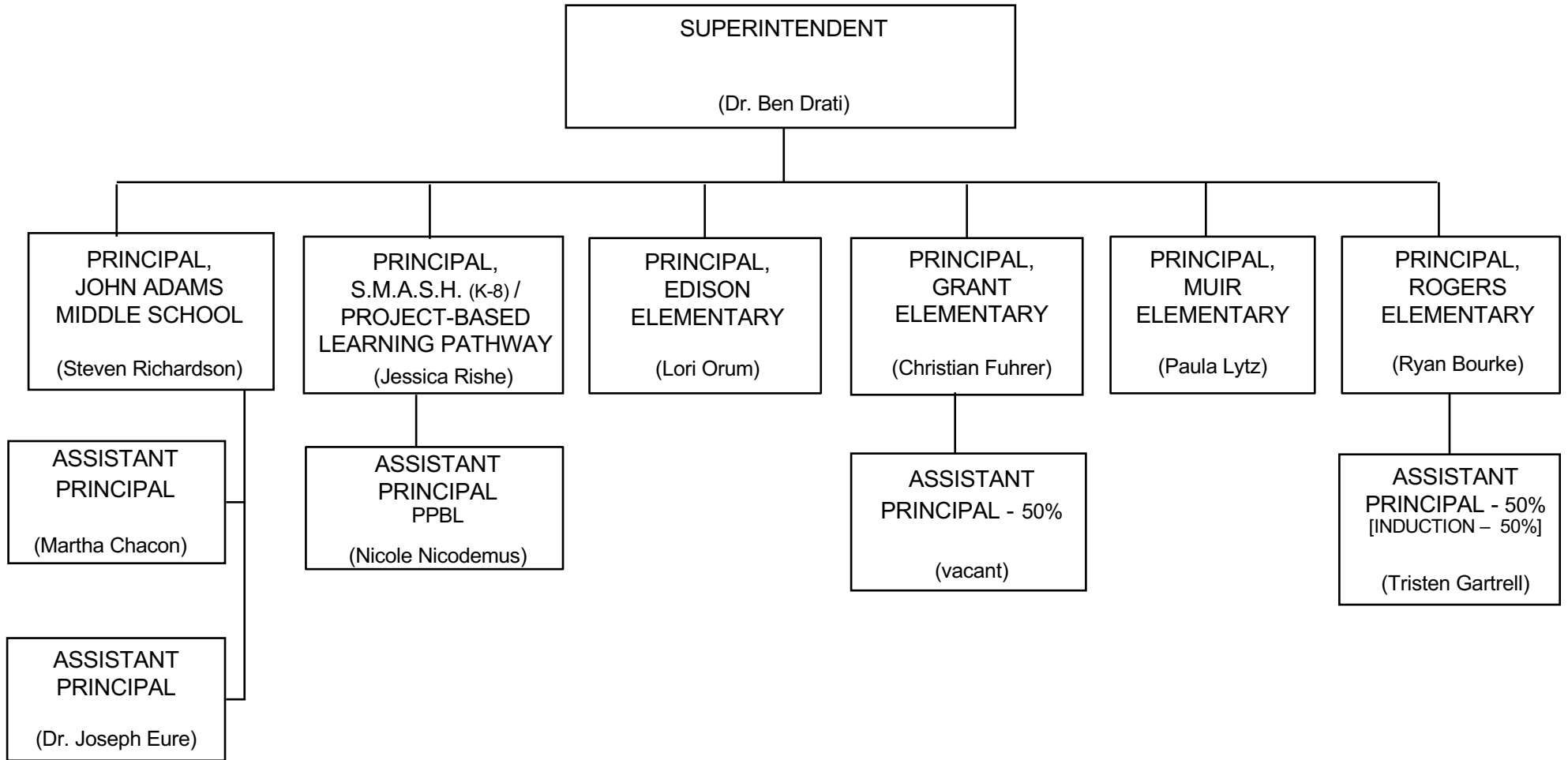
OPERATIONS: BUILDINGS AND GROUNDS



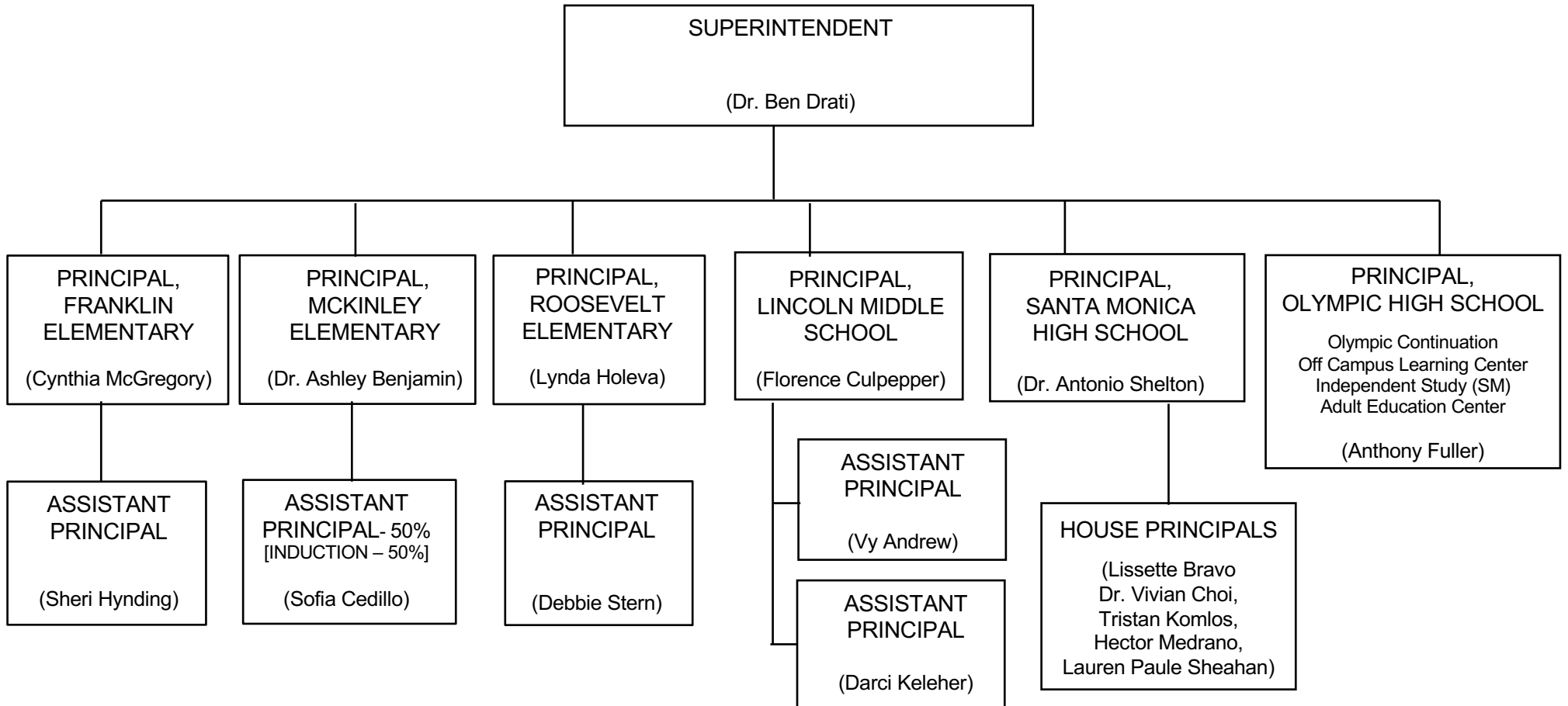
FACILITY USE DEPARTMENT



JOHN ADAMS PATHWAY



LINCOLN PATHWAY



MALIBU PATHWAY

