

2019 Great Schools Scores

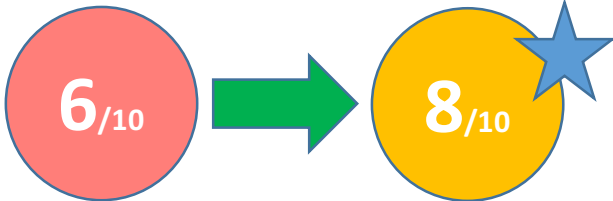
While the GreatSchools.org website is not used by the school or district as a reliable data measure, we recognize that it is something that parents in the community look at. Therefore, we are excited to share with you that our Great Schools ranking has made a big increase after all our hard work last year.

Congratulations to students, staff, and parents!

www.greatschools.org

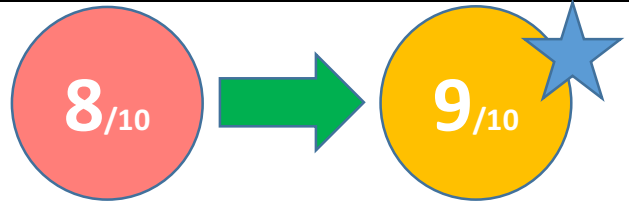
Overall Score

2016-17 Score	New Score based on End-of-year Test Scores from Last Year 2017-18
---------------	---



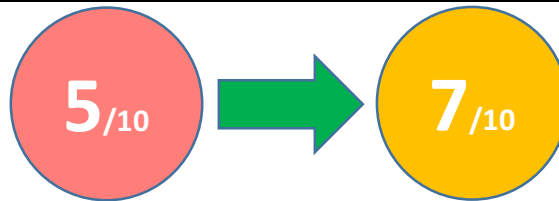
Test Scores

2016-17 Score	New Score based on End-of-year Test Scores from Last Year 2017-18
---------------	---



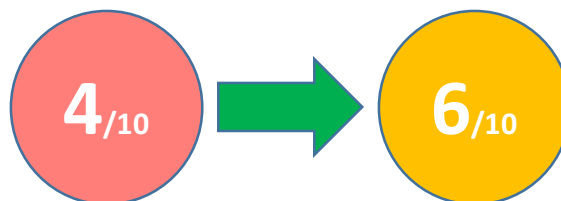
Academic Progress Score

2016-17 Score	New Score based on End-of-year Test Scores from Last Year 2017-18
---------------	---



Equity Score

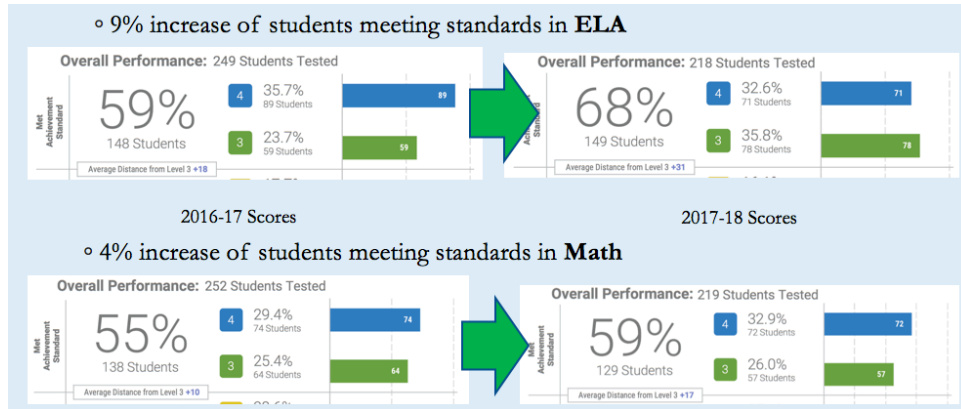
2016-17 Score	New Score based on End-of-year Test Scores from Last Year 2017-18
---------------	---



End-of-Year 2017-2018 CAASPP State Test Scores

<https://caaspp.cde.ca.gov/>

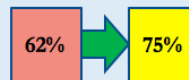
Schoolwide Growth



Grade Level Increases

ELA

• 12% increase in 3rd grade



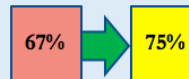
• 14% increase in 5th grade



• 4th grade maintained (at 65%)

Math

◦ 8% increase in 3rd grade



◦ 11% increase in 5th grade



- 3rd Grade scores higher than the district average in both ELA and Math
- 75% compared to SMMUSD 65% in ELA
- 75% compared to SMMUSD 69% in Math

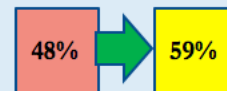
Big Growth with Subgroups: McKinley Closing the Achievement Gap!

ELA

• Hispanic- 15% Increase



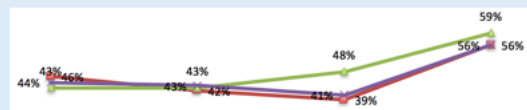
• Black- 11% Increase



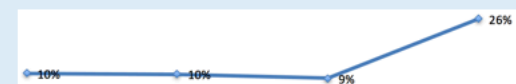
• Socioeconomically Disadvantaged- 17% Increase



• English Learners- 17% Increase



Big jumps after 3 years of stagnancy



End-of-Year 2018 Dashboard Data

The California School Dashboard is an online tool that shows how schools are performing on the state and local indicators. This is the new state accountability tool and is tied to the Local Control Funding Formula law passed in 2013. The performance levels (colors) and performance status are based on the 2017-18 state test data, and the change level is based on a comparison between 2016-17 and 2017-18 state test data.

www.caschooldashboard.org

All Students

English Language Arts

All Students State



Green

30.2 points above standard

Increased 12.2 Points Ⓢ

Mathematics

All Students State



Green

17.7 points above standard

Increased 6.9 Points Ⓢ

English Learner Progress

English Language Proficiency Assessments for California Results

Number of Students: 79

Level 4 - Well Developed

49.4%



Level 3 - Moderately Developed

32.9%



Level 2 - Somewhat Developed

10.1%



Level 1 - Beginning Stage

7.6%

