

**For a Listing of Upcoming Board Meetings
see page 6 of the table of contents**

**The Board of Education meeting of October 19, 2000
was held in the City Council Chambers
of the Santa Monica City Hall
1685 Main Street in Santa Monica**

**Meetings in Santa Monica are taped for rebroadcast
and played on cable channel 16 (CityTV) at 11:00 a.m.
on the Sunday following the Board meeting.**

**Meetings are rebroadcast in Malibu on Government Access
Channel 15 every Thursday at 2pm; every Saturday & Sunday at 8pm**

**Santa Monica-Malibu Unified School District
Board of Education
MEETING MINUTES**

OCTOBER 19, 2000

A regular meeting of the Santa Monica-Malibu Unified School District Board of Education was scheduled for Thursday, October 19, 2000 in the City Council Chambers of the Santa Monica City Hall, 1685 Main Street in Santa Monica. Following the Call to Order at 5:00 p.m. in the Board Room of the School District's Administrative Offices at 1651 16th Street in Santa Monica, the Board moved to Closed Session for reasons listed in Section II, below. Upon completion of the Closed Session, the Board reconvened in public session at 7:00 p.m. in the City Council Chambers (address noted above).

PUBLIC PORTION OF MEETING MEETING: 7:00 P.M.

Persons wishing to address the Board of Education should submit the "request to address" card prior to discussion of the item.

I CALL TO ORDER

- A Roll Call
- B Pledge of Allegiance

**II PUBLIC COMMENTS FOR CLOSED SESSION ITEMS ONLY
CLOSED SESSION -**

Conference with the District Negotiations Team regarding 2000-01 negotiations with the Santa Monica-Malibu Teachers Association (SMMCTA), the Service Employees International Union (SEIU), Local 660, and non-represented employees, pursuant to Section 54957.6 of the Brown Act

**III BOARD OF EDUCATION - COMMENDATIONS/RECOGNITIONS
none**

IV	APPROVAL OF MINUTES:	1a
A.1	Approval of Minutes: August 10, 2000	
	September 7, 2000	
	September 21, 2000	

V CONSENT AGENDA

Consent agenda items are considered routine, as agreed by the President, Vice-President and Superintendent, requiring no discussion, and are normally all approved at one time by the Board of Education. However, members of the Board of Education, staff, or the public may request an item be removed from the consent agenda for clarification and/or discussion. Consideration will occur during Section VIII.

Business and Finance

A.2	Award of Purchase Orders, FY 2000-2001	1-1g
A.3	Approval of Gifts FY 2000/01	2-2e
A.4	Conference and Travel Approval	3--5
A.5	Approval of Independent Contracts	6-7
A.6	Approve Contract for Legal Services Provided by Atkinson, Andelson, Loya, Rudd & Romo/Attorneys-at-Law	8
A.7	Grant of Easement / Webster Elementary School	9-10a

Proposition X / State Modernization Curriculum and Instruction

A.8	Approval of Consolidated Applications Part II <u>Pulled by Staff</u>	11
A.9	Carl D. Perkins Vocational and Applied Technology Application	12
A.10	Approval of Funding - La Women's Foundation Track Seed Grant: Morgan Leslie Segal Fund	13

General Functions

A.11	Approval of Designated Volunteers	14
A.12	Denial of Claim (employee #6268)	15
A.13	Denial of Claim (student, DOB 9/24/82)	16

Personnel

A.14	Certificated Personnel - Elections, Separations	17-23
A.15	Special Services Employees	24
A.16	Reappointment of Personnel Commissioner Celia Carroll	25
A.17	Classified Personnel--Merit.	26-29
A.18	Classified Personnel—Non-Merit	30

VI COMMUNICATIONS

Communications is an opportunity for the Board of Education to hear reports from school sites, the Superintendent, the Student Board member, the Santa Monica-Malibu Classroom Teachers Association (SMMCTA), the Service Employees International Union (Local 660-SEIU), PTA Council, District Advisory Committees, and the Santa Monica-Malibu Education Foundation.

A. School Reports

B. Superintendent's Report

The Superintendent's report will include the following topics:

- Sports Medicine / Update and Recognitions (Chris Corliss)

- API Report

C. Student Board Members' Report

D. SMMCTA Representative's Report

E. S.E.I.U. Representative's Report

F. PTA Council President's Report

✓Report may also include a brief overview of PTA Activities at a school site

G. District Advisory Committee Report(s)

H. SM-M Education Foundation President's Report

I. Proposition X / State Modernization—Jacobs /Sverdrup CRSS

J. Prop X Oversight Committee

VII PUBLIC COMMENTS

Public Comments is the time when members of the audience may address the Board of Education on items not scheduled on the meeting's agenda. All speakers are limited to three (3) minutes. When there is a large number of speakers, the Board may reduce the allotted time to two(2) minutes per speaker. The Brown Act (Government Code) states that Board members may not engage in discussion of issues raised during "VII, Public Comments" except to ask clarifying questions, make a brief announcement, make a brief report on his or her own activities, or to refer the matter to staff. This Public Comment section is limited to 20 minutes. If the number of persons wishing to address the Board of Education exceeds the time limit, additional time will be provided in Section XIII, CONTINUATION OF PUBLIC COMMENTS.

As a general rule, items under **MAJOR** and **DISCUSSION** will be listed in order of importance as determined by the President, Vice-President and Superintendent. Individual Board members may move to request a change in the order prior to consideration of any Major item. The Board may also move any of these items out of order to be heard immediately following **PUBLIC COMMENTS** if it appears that there is special interest by the public or as a courtesy to staff members making presentations to the Board.

VIII MAJOR ITEMS

These items are considered to be of major interest and/or importance and are presented for **ACTION (A)** at this time. Many have been reviewed by the Board at a previous meeting under the **Discussion Items** section of the agenda. Action Items are submitted to the Board of Education with a recommendation from the Superintendent. They may be tabled or postponed by action of a quorum of the Board. Items pulled from Section V, **Consent Agenda**, will be deliberated in Section VIII following the scheduled Action Items. When a member of the Staff presents an item, the Board may ask clarifying questions before the Public is heard on that item. Board discussion of the item will take place after hearing from the Public.

- (10 min) A.19 **PUBLIC HEARING** - continued
Santa Monica-Malibu Classroom Teachers Association (SMMCTA)
And the Santa Monica-Malibu Unified School District's Initial
Proposals on Matters Related to Negotiations 2000-2001 33-34
- (10 min) A.20 Adoption of Revised Board Policy BP 4112.2 / Certificated
Personnel - Certification 35-38
- (10 min) A.21 Adoption of Revised Board Policy Bp 6178 /
Vocational Education 39-42
- (5 min) A.22 Acceptance of Resignations from District Advisory Committees/
Decalaration of Vacancies 43
- (10 min) A.23 Fall Appointments to District Advisory Committees 44
- (10 min) A.24 Budget Adjustments 45

IX DISCUSSION ITEMS

These items are submitted for information (FIRST READING) and discussion. Action will generally be considered at the next regularly scheduled meeting of the Board.

X BOARD MEMBER ITEMS

These items are submitted by individual Board members for information or discussion, as per Board Policy 8320(b).

XI REQUESTS BY MEMBERS OF THE PUBLIC OR DISTRICT ADVISORY COMMITTEES TO ADDRESS THE BOARD OF EDUCATION

These items are submitted by members of the public to address the Board of Education on a matter within the jurisdiction of the Board, as per Board Policy 8320(c). Requests must be submitted to the Superintendent in writing ten days before the Board meeting or prior to agenda planning, in accordance with the established agenda planning schedule, whichever is less. The written request will not exceed 500 words and will include, as an attachment, brief background information and the reason for the request.

XII INFORMATION ITEMS

These items are intended to keep the Board informed on various District business matters which do not require formal action by the Board.

- I.1 Superintendent Search / Continuing Update 46
- I.2 Supplemental Textbooks to be Adopted 47

XIII CONTINUATION OF PUBLIC COMMENTS

A continuation of Section VII, as needed.

XIV BOARD MEMBER COMMENTS

Board Member Comments are where a Board member may make a brief announcement or make a brief report on his or her own activities relative to Board business. There can be no discussion under "BOARD MEMBER COMMENTS".

XV FUTURE AGENDA ITEMS

Items for future consideration will be listed with the projected date of consideration. The Board of Education will be given any backup information available at this time.

XVI CLOSED SESSION

The Board of Education may adjourn to CLOSED SESSION to complete discussion on items listed for CLOSED SESSION.

XVII ADJOURNMENT

The meeting was adjourned in memory of Maitai Peterson, a French teacher at Santa Monica High School.

There will be a closed session meeting of the Board of Education at 6:00 p.m. on October 23, 2000 in the Administrative Offices of the School District, 1651 - 16th Street for the following reason: Conference with the District Negotiations Team regarding 2000-01 negotiations with the Santa Monica-Malibu Teachers Association (SMMCTA), the Service Employees International Union (SEIU), Local 660, and non-represented employees, pursuant to Section 54957.6 of the Brown Act

The next regular meeting is scheduled for 7:00 p.m. on Thursday, November 2, 2000 in the auditorium of HRL (Hughes Research Laboratories) at 3011 Malibu Canyon Road in Malibu.

BOARD OF EDUCATION SCHEDULE 2000-2001			
*These dates have been confirmed at the Santa Monica City Council Chambers			
2000			
August	10		
September	07	21*	
October	05 Malibu	19 *	
November	02 Malibu	16 *	
December	14		
2001			
January	04	18*	
February	01	15*	
March	01 (Malibu)	14 (Wed)	
April	05	26 (DAC Reports & Recommendations)	
May	03 (Malibu)	17*	10 (Closed Session, Superintendents Evaluation)
June	07	28 (Budget adoption)	

AGENDA DISTRIBUTION

Agendas are distributed to:

- All District principals
- District managers/supervisors
- all branches of the public library in Santa Monica and Malibu
- print media in both Santa Monica and Malibu
- SMMCTA and SEIU representatives
- presidents of PTA Council and site PTAs
- African American Parent Support Group
- District Legal Counsel
- the City Managers of both Santa Monica and Malibu
- members of the public who may subscribe.
- electronic media - surfsantamonica
- email distribution list

Agenda Tables of Contents are mailed first class mail at no cost to the receiving party to
 chairs of District Advisory Committees, chairs of Site Governance Councils,
 members of the Prop X Oversight Committee
 City Council members of both Santa Monica and Malibu
 Board of Trustees Members Santa Monica College
 representatives of child care/child welfare agencies in Santa Monica
 representatives of various City commissions
 requesting members of the public.
 members, Superintendent's Financial Task Force
 email distribution list

A copy of the Table of Contents is posted 72 hours in advance of regularly scheduled Board of Education meeting and is accessible to the public 24 hours/day in the window outside the District Offices entrance, 1651 - 16th street in Santa Monica. Special meeting agendas are posted 48 hours prior to special meetings of the Board of Education.

If you will require an accommodation to participate in the Board meeting, please notify the Superintendent's Office at least one day prior to the meeting.

October 19, 2000

October 19, 2000

SANTA MONICA-MALIBU UNIFIED SCHOOL DISTRICT
BOARD OF EDUCATION

I CALL TO ORDER

5:00 p.m.

Move to Closed Session: 5:05 p.m.

A Roll Call

Resume Public Session: 7:00 p.m.

Todd Hess - President
Tom Pratt - Vice President
Pam Brady
Julia Brownley
Dorothy Chapman
Brenda Gottfried
Margaret R. Quiñones (arr. 7:10 p.m.)

Alexis Bolter, Student Board Member/Malibu High School
Joe Green, Student Board Member/Santa Monica High School
Jane Kennedy, Student Board Member/Olympic High School

B Pledge of Allegiance

Mr. Hess

II CLOSED SESSION - Reports

Conference with the District Negotiations Team regarding 2000-01 negotiations with the Santa Monica-Malibu Teachers Association (SMMCTA), the Service Employees International Union (SEIU), Local 660, and non-represented employees, pursuant to Section 54957.6 of the Brown Act

NO ACTION TAKEN

VI COMMUNICATIONS

- A. School Reports - none
- B. Superintendent's Report

The Superintendent's report included the following:

- Lincoln Middle School - a National Blue Ribbon School of Excellence. Dr. Ilene Straus (principal), Jeannie Davenport (teacher), Sharon Heart (District Teacher of the Year), Joyce Smith (PTA) and Alan Rogers (Teacher) presented an overview of the process for becoming a National Blue Ribbon School of Excellence. They shared materials that were part of the application process with the Board and public. These materials are on file at Lincoln Middle School and with the permanent minutes of the meeting.
- Sports Medicine / Update and Recognitions (Chris Corliss)
(See attached)
- API Report (Sue Gee)
Assistant Superintendent Sue Gee presented an overview of the information regarding the API scores. The report used the same materials as presented at the meeting of October 5, 2000, held in Malibu. The materials are on file in the Educational Services Department and with the permanent minutes of the meeting. The data presented show significant increases in scores at all school sites tested, according to all criteria. (See attached data)
- Calendar Process for 2001/02 School Year
Dr. Schmidt reported that Harry Keiley, SMMCTA president, has given Rick Bagley the names of three teachers who will be representing SMMCTA in discussions relative to the 2001-02 calendar. There will be one teacher from elementary, one from middle school and one from high school. Their plan is to go over three or four basic calendar scenarios.

After a meeting scheduled for November 9, the SMMCTA reps will take the various scenarios back to the Association for a total membership vote. At the same time, the District will present the scenarios (hopefully no more than three) to the Board for discussion in public and for public input.

The goal would be to have a calendar adopted by the time we go on Winter break.

After some discussion, the Board requested that **before** the calendar scenarios are put on the Board agenda for general public discussion and public input, that the scenarios be sent to Site Governance Councils for review and input, with specific timelines for response. Site Governance Councils are elected and, therefore,

their parent members are elected representatives of their respective parent communities.

The calendar would then come back to be formally placed on the Board agenda for Board discussion and public review and input.

- Highlights of the Santa Monica High School Marching Band:
a tape was played showing clips of many of the events the band participated in.
- Principal Search - Santa Monica High School.
Dr. Schmidt reported that the principal search for the Santa Monica High School principal was continuing according to schedule, with the intent of having a new principal hired by winter break.

C. Student Board Members' Report

Joe Green, Santa Monica High School, reported that he had attended the live interactive League of Women Voters candidates forum in the Santa Monica City Council chambers and one of the questions he submitted was asked of the school board candidates. He also reported that there is concern among students over rising food prices.

Alexis Bolter, Malibu High School, reported that, in her capacity as student board representative, she had asked a question of the school board candidates at a League of Women Voters/Santa Monica candidates forum in Malibu. She also reported that a Global Outreach club was starting on the Malibu High campus.

Jane Kennedy, Olympic High School, reported that Project Echo is moving ahead and the students are excited about it and that construction would begin soon on the new kitchen. She also reported that an internment camp survivor from World War II spoke to the multi-mosaic class regarding the Japanese experience during the war. Ms. Kennedy also spoke about the reinstatement of a former tradition of ringing a bell to signify graduating seniors.

D. SMMCTA Representative's Report - Harry Keiley

Mr. Keiley commented that the API test results was great news. He also noted that SMMCTA representatives will be working with Rick Bagley to put together 3 or 4 calendar year scenarios and will be bringing them to the board for board and public input. He also reported that Jean Carriati is working to build the Teachers Networking with Teachers network. Mr. Keiley further expressed sorrow at the passing of Maitai Peterson, a French teacher at Samohi.

E. S.E.I.U. Representative's Report - none

F. PTA Council President's Report

Rick Gates, Council president, reminded the Board that the PTA has taken the

following positions: No on 38 (Vouchers), Yes on 39 (55% vote for passage of bond measures) and Yes on Y (local Parcel Tax measure). He also noted that the PTA and the League of Women Voters of Santa Monica have worked together to bring school board candidate forums to the community as a whole and to various school communities throughout the district as well.

- G. District Advisory Committee Report(s) - none
- H. SM-M Education Foundation President's Report - none
- I. Proposition X / State Modernization—Jacobs /Sverdrup CRSS
(see attached)
- J. Prop X Oversight Committee
Suzi Mitchell, representative from the Prop X Oversight Committee, reported that the committee would be mailing a half-page postcard to all elementary parents letting them know that the playgrounds are being redone. The committee has also established subcommittees for contract compliance and monitoring finances.

VII PUBLIC COMMENTS

Report on Santa Monica-Malibu Unified School District
1999-2000 High School Sports Medicine Program
Prepared by Chris Corliss, Coordinator
Sports & Physical Education Programs

High school athletics provide an extremely valuable learning experience for student-athletes. In the 1999-2000 school year, there were a total of 1500 student-athlete participants in athletic programs at Santa Monica and Malibu High Schools. This total includes 600 female participants and an estimated 350 "at-risk students" for whom athletics is a powerful, and all too often primary reason to stay in school and achieve academic success. Our high school athletic programs attract more student after-school participation and more "at-risk" student participation than all other high school after-school activities combined.

Contrary to public opinion, nationally, high school student-athletes:

- Outperform other students in the classroom with a GPA +.3 higher than non- student-athletes on 4.0 scale.
- Attend 2.5 more days of school per year than non- student-athletes.
- Outperform non-athletic peers in college based on a 25% higher graduation rate.
- Outperform non-athletic peers in adult life as 70% of Fortune 1000 executives attributed sports team participation as key to being better prepared for success in business relationships and responsibilities.

Injuries are a reality of any sports program. We work to keep them to a minimum. We cannot operate a quality athletic program without a quality sports medicine program to support our coaches and student-athletes. We are fortunate to have Saint John's Health Center, Santa Monica Orthopedic Group and UCLA's Sports Medicine / Family Practice Fellowship Program as our partners in sports medicine.

The 1999-2000 Sports Medicine program consisted of:

1. 825 comprehensive preseason physical examinations were provided at no charge by a consortium of Santa Monica Orthopedic and Sports Medicine Group (SMOG) physicians led by Bert Mandelbaum, MD, Thom Knapp, MD and UCLA Sports Medicine Fellowship physician, Joey Luftman, MD. These were organized and coordinated at Saint Johns Health Center by Robert Shields, RPT, Director of Rehabilitation and Sports Medicine.
2. 15,500 training room visits for injury prevention and care, injury triage, first aid, rehabilitation and other sports injury services were provided by Julie Aoyagi, Certified Athletic Trainer at Santa Monica High School.
3. 650 on-site sports injury care visits were provided free of charge to student-athletes by Dr. Luftman at Santa Monica High School. We estimate 50% (325) of these school site office visits were by low income students, who do not have access to or would not otherwise go to a physician for evaluation and treatment of their sports-related injuries.
4. Emergency medical game coverage was provided by Dr. Luftman at 18 Santa Monica High School athletic events.

5. Emergency medical game coverage was provided by SMOG physicians at 4 Malibu High School home football games.
6. Emergency medical game coverage was provided by Julie Aoyagi, Certified Athletic Trainer at 175 Santa Monica High School athletic events.
7. Saint John's provided First Aid / CPR classes to approximately 20 coaches .
8. Saint John's sponsored a symposium on the "Female Athlete", providing an professional development for the 25 SMMUSD coaches.
9. Saint John's donated an estimated \$500 in sports medicine supplies and athletic training equipment to the program this past year. These supplies supplemented those that the schools purchase to maintain the athletic training rooms. Many of these supplies are given to low-income student athletes by the trainer and/or physician when it is apparent that the student cannot afford to purchase the training / injury rehabilitation equipment or medical supplies they require.
10. Saint John's generously donated \$20,000 to the District in support high school sports medicine programs. Funds were allocated as follows:
 - a. \$5000 was allocated to purchasing training supplies, equipment and insurance services for distribution directly to low income student-athletes.
 - b. \$5000 to Malibu High and the most critical component of the program, the athletic trainer position. Attempts to recruit and retain a certified trainer at Malibu High were unsuccessful. Other physical therapy / medical personnel were contracted for services in an attempt to provide some ongoing sports medicine coverage.
 - c. \$10,000 was allocated to Santa Monica High School to support the District contribution (\$7500) and athletic program contribution (\$5000) to pay for the Athletic Trainer position.

Information Regarding the 1999-2000 Academic Performance Index (API) Growth Report

The attached information regarding the 1999-2000 API growth for schools was released to districts on the afternoon of October 2nd. All of the schools for which API targets were reported met both their overall (school-wide) targets and their comparable improvement targets. The only two schools in the district that did not receive API scores were SMASH and Olympic. The State does not calculate APIs for alternative or continuation schools.

The information on the attached chart includes several calculations. The first column on the left shows the percent of students tested at a school on the STAR. This percentage was calculated by dividing the number of students tested by the number enrolled on the first day of testing. The total enrollment was adjusted by subtracting any students who were exempted from the STAR due either to parent exemption or per their Individualized Education Program.

The second column entitled 2000 API (Growth) indicates the new API for each school listed for the 1999-2000 school year. The third column (1999 API - Base) lists the original API for the 1998-1999 school year. The fourth column shows the growth target that each school needed to meet in 1999-2000, and the fifth column shows the number of points each school actually went up during 1999-2000. For example, during the 1999-2000 school year, 100% of the enrollment at John Muir Elementary took the STAR (not including those students who were exempted from testing). The API at John Muir this year was 683. Last year (1998-1999) John Muir's API was 602. John Muir's API was supposed to go up this year by 10 points (per the fourth column), but actually went up 81 points (see the fifth column).

The four columns on the right-hand side of the sheet indicate which schools in the district met their school-wide targets, their comparable improvement targets, or both of these targets. The final column indicates which of the schools is eligible for State funded awards for having met the API targets. In this case, all of the schools listed met each of the targets and is eligible for State funded awards.

If a school meets its comparable improvement target, this means that each numerically significant ethnic and socioeconomically disadvantaged subgroup at that school demonstrated comparable improvement. Each numerically significant subgroup had to meet at least 80% of the overall schoolwide target in order for a school to have comparable improvement.

1999 Academic Performance Index (API) Report

List of Schools

Updated on April 24, 2000

District: Santa Monica-Malibu Unified
County: Los Angeles
CD Code: 19-64980

	1999 Percent Tested ¹	1999 API ²	1999 Statewide Rank ³	1999 Similar Schools Rank ³	1999- 2000 Growth Target ⁴	2000 API Target ⁵
Elementary Schools						
<u>Cabrillo (Juan) Elementary</u>	93	792	9	8	1	793
<u>Edison Elementary</u>	77	604	5	7	10	614
<u>Franklin Elementary</u>	98	884	10	10	*	*
<u>Grant Elementary</u>	100	754	8	9	2	756
<u>Mckinley Elementary</u>	97	753	8	10	2	755
<u>Muir (John) Elementary</u>	90	602	5	5	10	612
<u>Point Dume Elementary</u>	97	856	10	8	*	*
<u>Rogers (Will) Elementary</u>	89	665	6	8	7	672
<u>Roosevelt Elementary</u>	99	777	9	7	1	778
<u>Webster Elementary</u>	100	824	10	7	*	*
Middle Schools						
<u>Adams (John) Middle</u>	97	646	6	7	8	654
<u>Lincoln Middle</u>	99	830	10	10	*	*
High Schools						
<u>Malibu High</u>	94	793	10	10	1	794
<u>Santa Monica High</u>	93	683	8	8	6	689

¹ This percent is calculated by dividing the number of students tested by enrollment in grades tested as indicated on the October, 1998 CBEDS School Information Form

² The API scale is 200-1000. Only scores for students in the district the prior year are included in the calculation.

³ Rankings are in deciles with 10 being the highest and 1 the lowest. For Statewide ranks, each decile contains 10% of all schools. For Similar Schools ranks, each decile contains 10% of the 100 most similar schools.

⁴ The growth target is 5% of the difference between the 1999 API and the interim Statewide Performance Target of 800.

⁵ This is the sum of the 1999 API plus the 1999-2000 Growth Target.

SANTA MONICA – MALIBU UNIFIED SCHOOL DISTRICT
Proposition X / State Modernization Update No. 21
October 19, 2000

- Barnum Hall work is ongoing with the first concrete foundations being poured, mass excavation completed, demolition complete, new plumbing underway in the basement and concrete block work scheduled to begin this week.
- Phasing and planning meetings have continued at SAMOHI last week and this week to review all of the drawings and discuss revised work plans and coordination of the new and modernization work with the programmatic requirements of the school. It is anticipated that bidding on the modernization portion of the work will begin in November. The new classroom building, which is still in review by DSA, will be issued for bid in December.
- The Malibu High School new parking lot is well underway and scheduled to be complete by the end of November. Work has also started at the new Track and Field facility which is scheduled to be complete by the end of January 2001. We are currently bidding the site utility package for the new gymnasium and new classrooms as well as the new classroom building. The balance of work (modernization and gymnasium) will be bid in January.
- Demolition and Hazardous material removal is continuing at Lincoln Pool and Adams Cafeteria. Demolition for the new classroom building at Roosevelt is underway and playfield construction has started at Grant Elementary.
- Work is scheduled to begin at Webster next week and at Pt. Dume the first week of November. Mobilizations for modernization on the Santa Monica elementary schools will take place in October and November.

TO: BOARD OF EDUCATION
FROM: SUPERINTENDENT
RE: APPROVAL OF MINUTES

ACTION
10/19/00

RECOMMENDATION NO. A.1a

It is recommended that the Board of Education approve the minutes of the following meetings:

August 10, 2000
September 7, 2000
September 21, 2000

August 10, 2000

MOTION MADE BY: Ms. Brownley
SECONDED BY: Mr. Pratt

STUDENT ADVISORY VOTE: Abstention
AYES: (5) Ms. Quiñones out of room
NOES: None (0)
ABSTENTION: (1) Mr. Pratt

September 7, 2000

MOTION MADE BY: Ms. Brownley
SECONDED BY: Mr. Pratt

STUDENT ADVISORY VOTE: Aye
AYES: (6) Ms. Quiñones
NOES: None (0)

September 21, 2000

MOTION MADE BY: Ms. Brownley
SECONDED BY: Mr. Pratt

STUDENT ADVISORY VOTE: Aye
AYES: (6) Ms. Quiñones out of the room
NOES: None (0)

CONSENT

TO: BOARD OF EDUCATION

ACTION
10/19/00

FROM: ARTHUR L. COHEN/VIRGINIA HYATT

RE: APPROVAL OF PURCHASE ORDERS

RECOMMENDATION NO. A.2

It is recommended that the Board of Education approve the following Purchase Orders and Changed Purchase Orders from September 28, 2000 through October 12, 2000 for fiscal 00/01.

MOTION MADE BY: Ms. Brownley
SECONDED BY: Mr. Pratt

STUDENT ADVISORY VOTE: Aye
AYES: (6) Ms. Quiñones out of the room
NOES: None (0)

SANTA MONICA-MALIBU UNIFIED SCHOOL DISTRICT
PURCHASE ORDERS TO BE APPROVED AT THE BOARD MEETING OF OCTOBER 19, 2000

PAGE 1

U-GENERAL FUND, UNRESTRICTED R-GENERAL FUND, RESTRICTED A-ADULT ED CD-CHILD DEVELOPMENT F-CAFETERIA
SF-SPECIAL FINANCING (FLEX) EX-PROPS and X D-DEVELOPER FEES EQ-EARTHQUAKE
SM-STATE MODERNIZATION NC-STATE NEW CONSTRUCTION

PO NO.	VENDOR	DESCRIPTION	LOCATION	AMOUNT	
*** CHANGED PURCHASE ORDERS ***					
162884	IMAGE 2000	RISOGRAPH SUPPLIES	FRANKLIN FORMULA	465.23	U
163048	WESTERN PSYCHOLOGICAL	TESTING MATERIAL	SPEC ED REG YR CATEGORICAL	315.83	R
				** CHANGED PURCHASE ORDERS TOTAL:	
				781.06	
*** NEW PURCHASE ORDERS ***					
162591	AARDVARK CLAY	CLAY AND GLAZES, CLASSROOM ART	FRANKLIN FORMULA	422.32	U
162741	ACADEMIC BOOK SERVICES	SOCIAL STUDIES TEXTBOOKS	SANTA MONICA HS CATEGORICAL	4,372.43	R
163082	ADAGER	MAINTENANCE AGREEMENT	COMPUTER SERVICES	300.00	U
162797	AMERICAN SCHOOL PUBLISHERS/SRA	INX SUPPLIES	MUIR CATEGORICAL	445.15	R
162776	AMERITECH BANNERS	GENERAL INSTR SUPPLIES/BANNER	ADULT ED CATEGORICAL	81.19	R
162712	AMSCO	TEXTBOOKS	MALIBU HIGH CATEGORICAL	1,164.92	R
163142	ANIXTER BROS INC	CABLE	COMPUTER SERVICES	176.55	U
162784	APPLE COMPUTER CORP	COMPUTER EQUIPMENT	STATE & FEDERAL CATEGORICAL	2,163.92	R
163039	APPLE COMPUTER CORP	iMAC COMPUTERS FOR LIBRARY	ROOSEVELT CATEGORICAL	3,081.88	R
162863	ASCD	MEMBERSHIP/DUES/MULTICULTURAL	CITY OF SM GIFT	39.00	R
162733	ASSN FOR SUPERVISION &	Character Education Materials	ROOSEVELT GIFT	158.33	R
162825	ASTRO CANON BUSINESS SOLUTIONS	Over copy charge	ROOSEVELT FORMULA	88.65	U
162970	ASTRO CANON BUSINESS SOLUTIONS	Maintenance Agreement	ROOSEVELT FORMULA	452.00	U
162929	AWARDS PLUS INC	RED RIBBONS-NON INSTR. SUPPLIE	STATE & FEDERAL CATEGORICAL	700.00	R
163083	BAKER COMMODITIES INC.	DISPOSAL OF GREASE FROM CAFE	FOOD SERVICES	30.00	F
162867	BARNES & NOBLE/SANTA MONICA	OPEN ORDER/TDC BOOKS	STATE & FEDERAL CATEGORICAL	500.00	R
163110	BARNES & NOBLE/SANTA MONICA	OPEN ORDER/BOOKS	PURCHASING/WAREHOUSE SERVICES	500.00	U
162726	BARON EMBROIDERY	SPIRIT SWEATSHIRTS FOR RESALE	SAMOH I STUDENT STORE	1,566.00	U
162714	BECKLEY CARDY/SCHOOL SPECIALTY	CLASSROOM SUPPLIES	MALIBU HIGH FORMULA	105.54	U
162935	BECKLEY CARDY/SCHOOL SPECIALTY	INSTRUCTIONAL SUPPLIES/	STATE PRE-SCHOOL	203.80	CD
163067	BECKLEY CARDY/SCHOOL SPECIALTY	INSTRUCTIONAL SUPPLIES	SACCC - SUBSIDIZED	90.40	CD
163075	BECKLEY CARDY/SCHOOL SPECIALTY	INSTRUCTIONAL SUPPLIES	STATE PRE-SCHOOL	119.30	CD
163092	BECKLEY CARDY/SCHOOL SPECIALTY	INSTRUCTIONAL SUPPLIES	SACCC - SUBSIDIZED	70.06	CD
163093	BECKLEY CARDY/SCHOOL SPECIALTY	INSTRUCTIONAL SUPPLIES	CHILD DEVELOPMENT CENTER	110.95	CD
162807	BEL AIR CAMERA	DIGITAL VIDEO CAMCORDER	SANTA MONICA HS FORMULA	821.62	U
162812	BENCHMARK BUSINESS SYSTEMS INC	COPIER MAINTENANCE AGREEMENT	MUIR GIFT	5,629.00	R
163042	BIDDLE, KRISTIN	NUTRITION ANALYSIS OF MENUS	FOOD SERVICES	1,650.00	F
163010	BMI EDUCATIONAL SERVICES	BOOKS	CABRILLO CATEGORICAL	1,003.50	R
162944	BRODART COMPANY	LIBRARY SUPPLIES	LINCOLN FORMULA	208.14	U
162927	BUDGET COPY SYSTEMS	TONER/COPYSTAR CS-14535	CHILD DEVELOPMENT CENTER	71.12	CD
162965	BUDGET TEXT	MATH BOOKS	JOHN ADAMS CATEGORICAL	491.40	R
162858	BURDICK, AMY	REIMB./CLASSROOM SUPPLIES	MCKINLEY FORMULA	200.00	U
162737	BUREAU FOR AT-RISK YOUTH, THE	Red Ribbon Pencils	ROOSEVELT GIFT	340.09	R
163049	BUREAU FOR AT-RISK YOUTH, THE	RED RIBBON MATERIALS/ROGERS	STATE & FEDERAL CATEGORICAL	412.64	R
162900	BUSY BEE HARDWARE	GROUND PEST CONTROL	GROUND MAINTENANCE	244.21	U
162894	C M SCHOOL SUPPLY	INSTRUCTIONAL SUPPLIES	STATE PRE-SCHOOL	71.38	CD
162897	C R JAECHKE POWER EQUIP	OPEN ORDER GROUNDS VEHICLE REP	GROUND MAINTENANCE	750.00	U
163080	CADY, LINDA	REIMBURSEMENT FOR LINDA CADY	JOHN ADAMS MIDDLE SCHOOL	333.44	U
162782	CALIFORNIA ALLIANCE FOR ARTS	OVERSEE MODEL ARTS PROGRAM	STATE & FEDERAL CATEGORICAL	3,000.00	R
162798	CALIFORNIA DEPARTMENT OF ED.	OTHER BOOKS	SANTA MONICA HS FORMULA	68.08	U
163024	CALIFORNIA SCHOOL LAW	BOOK	ROGERS CATEGORICAL	70.00	R
162874	CALIFORNIA WEEKLY EXPLORER INC	CALIFORNIA HISTORY EXPERIENCE	FRANKLIN CATEGORICAL	1,360.00	R
162773	CAMBRIDGE UNIV PRESS	FOREIGN LANGUAGE TEXTBOOKS	SANTA MONICA HS CATEGORICAL	508.23	R
162588	CAMPUS TECHNOLOGY	DYSLEXIA MEDIATION SOFTWARE	MUIR CATEGORICAL	83.69	R

1a

SANTA MONICA-MALIBU UNIFIED SCHOOL DISTRICT
PURCHASE ORDERS TO BE APPROVED AT THE BOARD MEETING OF OCTOBER 19, 2000

PAGE 2

U-GENERAL FUND, UNRESTRICTED R-GENERAL FUND, RESTRICTED A-ADULT ED CD-CHILD DEVELOPMENT F-CAFETERIA
SF-SPECIAL FINANCING (FLEX) EX-PROP ES and X D-DEVELOPER FEES EQ-EARTHQUAKE
SM-STATE MODERNIZATION NC-STATE NEW CONSTRUCTION

PO NO.	VENDOR	DESCRIPTION	LOCATION	AMOUNT	
162856	CANNELL, STEVEN	REIMBURSEMENT/BOOKS	STATE & FEDERAL CATEGORICAL	59.87	R
162742	CDE	Books	JOHN ADAMS CATEGORICAL	165.34	R
163027	CELEBRATION PRESS	Development Reading Assessment	PT. DUME CATEGORICAL	1,013.37	R
162903	CHILDCRAFT EDUCATION CORP.	INSTRUCTIONAL SUPPLIES	SACCC - SUBSIDIZED	84.97	CD
162801	CIF SOUTHERN SECTION	STATE DUES/FEES	SANTA MONICA HIGH SCHOOL	1,355.64	U
162692	CITY CREEK PRESS INC	Math Materials	ROOSEVELT CATEGORICAL	70.83	R
162804	CLASSROOMDIRECT.COM	INX SUPPLIES	MUIR CATEGORICAL	157.98	R
163063	CLASSROOMDIRECT.COM	INSTRUCTIONAL SUPPLIES	CHILD DEVELOPMENT CENTER	97.91	CD
162811	COASTAL ENTERPRISES	APRONS FOR STUDENT WORKERS	SAMOHI STUDENT STORE	565.07	U
162772	COLONIAL WILLIAMSBURG FOUNDATI	ELECTRONIC FIELD TRIPS;AM HIST	FRANKLIN CATEGORICAL	500.00	R
162725	COLUMBUS MANUFACTURERS INC	POM POMS FOR RESALE	SAMOHI STUDENT STORE	281.00	U
162751	COMMERCIAL RESTAURANT SERVICE	REPAIR OF BRAZING PAN AT SAMO	FOOD SERVICES	292.77	F
162752	COMMERCIAL RESTAURANT SERVICE	REPAIR OF OVEN LEAK AT SAMOHI	FOOD SERVICES	469.96	F
162750	CPM EDUCATIONAL PROGRAM	IMMERSION TEXTBOOKS	SANTA MONICA HIGH SCHOOL	372.49	U
162871	CRANE, LAKIN	REIMB./CLASSROOM SUPPLIES	SPECIAL ED CATEGORICAL	203.27	R
162734	CRAWFORD, CYNTHIA	REFRESHMENTS/BLACK STU/GIFT	JOHN ADAMS GIFT	63.07	R
163025	CREATIVE PUBLICATIONS	JUDY CLOCK/SDC/PRIMARY	ROOSEVELT CATEGORICAL	52.38	R
162724	CRYSTAL PRODUCTIONS	books & videos	JOHN ADAMS CATEGORICAL	793.74	R
162827	CTB MACMILLAN/MCGRAW HILL	TESTING MATERIALS	CURRICULUM & IMC	297.15	U
162653	D & D SECURITY RESOURCES INC	SUPPLIES	SANTA MONICA HS FORMULA	288.49	U
162672	D & D SECURITY RESOURCES INC	COMPUTER SUPPLIES/TECHNOLOGY	CURRICULUM & IMC	787.32	U
163119	D & D SECURITY RESOURCES INC	computer lockdown	CURRIC-IMC CATEGORICAL	32.14	R
162956	DAWS, TRACY CHRISTINE	REIMBURSEMENT-INTERVENTION	GRANT CATEGORICAL	395.43	R
162958	DAWS, TRACY CHRISTINE	REIMBURSEMENT-CLASSROOM SUPPLY	GRANT FORMULA	279.80	U
162918	DE LA TORRE, OSCAR	REIM. FOOD FOR TUTORING/GIFT	JOHN ADAMS GIFT	164.33	R
163058	DELTA EDUCATION	SCIENCE MATERIALS	ROGERS CATEGORICAL	3,139.55	R
162934	DON JOHNSTON INC	SOFTWARE/SPEC ED. DEPT.	SPEC ED REG YR CATEGORICAL	1,776.50	R
162787	DRIVESAVERS INC	IEP COMPUTER DATA RECOVERY	SPEC ED EXT YR CATEGORICAL	500.00	R
162909	DUKATZ, MELISSA	REIMB./CLASSROOM SUPPLIES	PT. DUME GIFT	101.68	R
162943	DURHAM TRANSPORTATION	TANSPORTATION COST/MUSIC	CURRICULUM & IMC	416.86	U
162933	EDUCATIONAL RESOURCES	SOFTWARE/SPEC.ED DEPT.	SPEC ED REG YR CATEGORICAL	135.41	R
162866	EDUCATIONAL TESTING SVC/CFASST	BTSA TEACHER/SUPPORT KITS	STATE & FEDERAL CATEGORICAL	4,925.38	R
163002	EDUCATORS PUBLISHING SERVICE	CLASSROOM SUPPLIES	CABRILLO GIFT	345.78	R
163005	EDUCATORS PUBLISHING SERVICE	SPELLING DICTIONARY WORKBOOKS	CABRILLO GIFT	69.90	R
162848	ETA SCIENCE	SCIENCE LAB MATERIALS	ROGERS CATEGORICAL	80.15	R
162851	ETA SCIENCE	SCIENCE MATERIALS	ROGERS CATEGORICAL	217.63	R
162756	ETR ASSOC/NETWORK PUBL	HEALTH OFFICE SUPPLIES	NEW SCHOOL FORMULA	116.09	U
162870	ETR ASSOC/NETWORK PUBL	INSTRUCTIONAL VIDEOS/L. MORN	STATE & FEDERAL CATEGORICAL	495.29	R
162899	EWING IRRIGATION PRODUCTS	OPEN ORDER GROUNDS SUPPLIES	GROUNDS MAINTENANCE	2,500.00	U
162810	F K M COPIER PRODUCTS	COPIER TONER	LINCOLN FORMULA	584.55	U
162947	FINANCE DEPT - SANTA MONICA	OPERATIONS CITY DUMP FEES	GROUNDS MAINTENANCE	2,994.22	U
162769	FLYNN, PATTY	REIMB./IN-SERVICE SUPPLIES	MUIR CATEGORICAL	174.54	R
162849	FOLLETT EDUCATIONAL SERVICES	MATH BOOKS	JOHN ADAMS CATEGORICAL	2,113.04	R
162868	FOLLETT EDUCATIONAL SERVICES	TEXTBOOKS	LINCOLN CATEGORICAL	607.59	R
162971	FOLLETT EDUCATIONAL SERVICES	TEXTBOOKS	LINCOLN CATEGORICAL	813.23	R
163008	FOLLETT EDUCATIONAL SERVICES	WORKBOOKS	CABRILLO CATEGORICAL	288.13	R
162901	FOUR SEASONS LANDSCAPING (DBA)	GROUNDS CONTRACT TREE TRIMMING	GROUNDS MAINTENANCE	1,700.00	U
163006	FRANKLIN QUEST-CENTURY CITY	OPEN ORDER/PLANNERS	SACCC - SUBSIDIZED	250.00	CD
163012	FRANKLIN QUEST-CENTURY CITY	OPEN ORDER/PLANNERS	CHILD DEVELOPMENT CENTER	500.00	CD
162557	FREESTYLE PHOTO	PHOTO CLASS SUPPLIES	MALIBU HIGH GIFT	3,468.15	R
162954	FRIEDENBERG, ALAN	REIMBURSEMENT	GRANT CATEGORICAL	134.09	R

16

SANTA MONICA-MALIBU UNIFIED SCHOOL DISTRICT
PURCHASE ORDERS TO BE APPROVED AT THE BOARD MEETING OF OCTOBER 19, 2000

PAGE 3

U-GENERAL FUND, UNRESTRICTED R-GENERAL FUND, RESTRICTED A-ADULT ED CD-CHILD DEVELOPMENT F-CAFETERIA
SF-SPECIAL FINANCING (FLEX) EX-PROPS and X D-DEVELOPER FEES EQ-EARTHQUAKE
SM-STATE MODERNIZATION NC-STATE NEW CONSTRUCTION

PO NO.	VENDOR	DESCRIPTION	LOCATION	AMOUNT	
162955	FRIEDENBERG, ALAN	REIMBURSEMENT	GRANT CATEGORICAL	129.84	R
162767	FRITO-LAY INC	OPEN ORDER/SNACK FOOD	SAMOHI STUDENT STORE	3,000.00	U
162603	GALE SUPPLY CO	STEEL MATS	LINCOLN FORMULA	541.25	U
162690	GALE SUPPLY CO	DOOR MAT	ROOSEVELT FORMULA	32.48	U
162718	GALE SUPPLY CO	CUSTODIAL SUPPLIES	SANTA MONICA HS FORMULA	659.46	U
163122	GANDER EDUCATION PUBLISHING	MATERIALS/SPECIAL ED DEPT.	SPEC ED REG YR CATEGORICAL	916.61	R
162622	GATEWAY 2000 MAJOR ACCOUNTS	COMPUTER EQUIP	SANTA MONICA HS CATEGORICAL	668.84	R
162800	GATEWAY 2000 MAJOR ACCOUNTS	LICENSE & FEES	SANTA MONICA HS CATEGORICAL	139.64	R
162879	GBC - NATIONAL SERVICE	LAMINATING SUPPLIES	ROGERS FORMULA	216.50	U
163101	GBC/EDUCATION DEPARTMENT	NON-INSTRUCTIONAL/LAMINATE	CHILD DEVELOPMENT CENTER	98.78	CD
162821	GECHT, MARCIA	REIMB./NUTRITIONAL SNACKS	OLYMPIC H.S. GIFT	77.44	R
162893	GEMPLER'S	OPEN ORDER CUSTODIAL SUPPLIES	FACILITY OPERATIONS	600.00	U
163123	GEMS	SCIENCE MATERIALS	ROGERS CATEGORICAL	302.66	R
162880	GIERASCH, STEFAN	REIMBURSEMENT/SUMMER SCHOOL	SPEC ED REG YR CATEGORICAL	4,500.00	R
162975	GLENCOE/MACMILLAN/MCGRAW-HILL	BIOLOGY BOOKS	OLYMPIC H.S. CATEGORICAL	287.57	R
162946	GONZALEZ, LYNETTE	REIMB./INSTRUCTIONAL SUPPLIES	STATE & FEDERAL CATEGORICAL	238.18	R
162981	GREAT SOURCE	STUDENT MATERIALS/LANG.ARTS	MUIR CATEGORICAL	250.03	R
162789	GROLIER EDUCATION CORP	Books	JOHN ADAMS CATEGORICAL	3,019.06	R
162843	GUMDROP BOOKS	BOOKS	CABRILLO CATEGORICAL	1,259.01	R
162942	GUSD-BTSA CLUSTER 4	CFASST BROCHURES	STATE & FEDERAL CATEGORICAL	94.00	R
162920	HEDRICK, CANDY	REIMB./CLASSROOM SUPPLIES	PT. DUME FORMULA	165.17	U
163046	HOLT RINEHART & WINSTON	SCIENCE TEXT BOOK/3RD.GRADE	EDISON CATEGORICAL	1,979.51	R
163004	HOME DEPOT- L.A.	OPEN ORDER/INSTRUCTIONAL ITEMS	SACCC - SUBSIDIZED	50.00	CD
162762	HOUGHTON MIFFLIN CO	TEACHER RESOURCE	GRANT CATEGORICAL	165.72	R
162869	HURWITZ, MARA	REIMB./CLASSROOM SUPPLIES	SPECIAL ED CATEGORICAL	564.53	R
162696	IMED	AUDIO VISUAL EQUIPMENT	SMASH FORMULA	673.21	U
162805	IMED	AUDIO VISUAL EQUIPMENT	SANTA MONICA HS FORMULA	1,770.32	U
162815	IMED	PROJECTION SCREEN	ROOSEVELT GIFT	53.04	R
163111	IMED	OVERHEAD PROJECTOR	PURCHASING/WAREHOUSE SERVICES	311.76	U
162864	INTELLI-TECH	COMPUTER SUPPLIES/TECHNOLOGY	CURRICULUM & IMC	97.43	U
162785	JAMESTOWN PUBLISHERS	BOOKS/READING TEACHER	SPEC ED EXT YR CATEGORICAL	164.15	R
162715	JANKA, HELEN	TEXTBOOKS	SANTA MONICA HS CATEGORICAL	124.33	R
162728	JONES, TERI	REIMB./STORE SUPPLIES	SAMOHI STUDENT STORE	151.00	U
163043	KAMRAN & CO	SHELVING	COMPUTER SERVICES	226.94	U
162802	KAPLAN SCHOOL SUPPLY CORP	INX SUPPLIES	MUIR CATEGORICAL	56.63	R
162697	KAPPAN	PERIODICAL RENEWAL	LINCOLN FORMULA	51.00	U
162717	KARYADI, ADRIENNE	REIMB./INSTR SUPPLIES	SANTA MONICA HS FORMULA	144.96	U
163100	KELIN, MARIE-CLAIRE	LIBRARY BOOKS	LINCOLN GIFT	62.72	R
162732	KEMP, ANITA	REIMB./COMPUTER SUPPLIES	SAMOHI STUDENT STORE	39.94	U
162865	KING, BRANDY	READING BOOKS/SPEC. ED DEPT.	SPEC ED REG YR CATEGORICAL	107.57	R
162790	KINKO'S	OPEN ORDER/PRINTING	FOOD SERVICES	2,000.00	F
163045	LAB SAFETY SUPPLY INC	LABELS FOR IDENTIFICATION	STATE & FEDERAL CATEGORICAL	61.58	R
162590	LACOE-DSSS	MEMBERSHIP/SCH HEALTH MANAGERS	HEALTH SERVICES	100.00	U
162813	LAGUNA CLAY COMPANY	ART SUPPLIES	SANTA MONICA HS FORMULA	1,406.47	U
162759	LAKESHORE (PICK UP ONLY)	OPEN ORDER/INSTRUCTIONAL	STATE PRE-SCHOOL	390.00	CD
162895	LAKESHORE (PICK UP ONLY)	OPEN ORDER/INSTRUCTIONAL	SACCC - SUBSIDIZED	200.00	CD
162910	LAKESHORE (PICK UP ONLY)	OPEN ORDER/INSTRUCTIONAL	SADCC - FULL COST	500.00	CD
162915	LAKESHORE (PICK UP ONLY)	OPEN ORDER/INSTRUCTIONAL ITEMS	CHILD DEVELOPMENT CENTER	50.00	CD
162917	LAKESHORE (PICK UP ONLY)	OPEN ORDER/INSTRUCTIONAL ITEMS	SACCC - SUBSIDIZED	100.00	CD
162919	LAKESHORE (PICK UP ONLY)	OPEN ORDER/INSTRUCTIONAL ITEMS	CHILD DEVELOPMENT CENTER	100.00	CD
162983	LAKESHORE (PICK UP ONLY)	OPEN ORDER/INSTRUCTIONAL ITEMS	CHILD DEVELOPMENT CENTER	128.00	CD

1c

SANTA MONICA-MALIBU UNIFIED SCHOOL DISTRICT
PURCHASE ORDERS TO BE APPROVED AT THE BOARD MEETING OF OCTOBER 19, 2000

PAGE 4

U-GENERAL FUND, UNRESTRICTED R-GENERAL FUND, RESTRICTED A-ADULT ED CD-CHILD DEVELOPMENT F-CAFETERIA
SF-SPECIAL FINANCING (FLEX) EX-PROP ES and X D-DEVELOPER FEES EQ-EARTHQUAKE
SM-STATE MODERNIZATION NC-STATE NEW CONSTRUCTION

PO NO.	VENDOR	DESCRIPTION	LOCATION	AMOUNT	
162987	LAKESHORE (PICK UP ONLY)	OPEN ORDER/INSTRUCTIONAL ITEMS	CHILD DEVELOPMENT CENTER	125.00	CD
162992	LAKESHORE (PICK UP ONLY)	OPEN ORDER/CONSUMABLES	STATE PRE-SCHOOL	375.00	CD
162846	LAKESHORE CURRICULUM	RUG FOR CLASSROOM	ROGERS CATEGORICAL	386.81	R
162847	LAKESHORE CURRICULUM	CLASSROOM SUPPLIES	ROGERS CATEGORICAL	605.58	R
162860	LAKESHORE CURRICULUM	CLASSROOM SUPPLIES	MCKINLEY CATEGORICAL	170.82	R
163116	LAKESHORE CURRICULUM	INSTRUCTIONAL MATERIALS	PURCHASING/WAREHOUSE SERVICES	708.58	U
162497	LANG, JUSTINE	REIMB./INSTRUCTIONAL SUPPLIES	STATE & FEDERAL CATEGORICAL	50.62	R
162857	LANG, JUSTINE	REIMB./INSTRUCTIONAL SUPPLIES	STATE & FEDERAL CATEGORICAL	77.18	R
162835	LEDoux, JOSEPH	REIMBURSE FOR CLASSROOM SUPPLI	CABRILLO GIFT	125.82	R
162839	LIBRARY STORE INC, THE	LIBRARY SUPPLIES	CABRILLO GIFT	211.76	R
163081	LIBRARY STORE INC, THE	LIBRARY SUPPLIES	MCKINLEY FORMULA	190.23	U
163108	LOUISE'S TRATTORIA	FOOD DELIVERY	STATE & FEDERAL CATEGORICAL	139.87	R
162666	MALECKI MUSIC INC	CHORAL SUPPLIES	LINCOLN FORMULA	413.33	U
162799	MARCY COOK MATH	INX SUPPLIES	MUIR CATEGORICAL	162.00	R
162904	MARCY COOK MATH	INSTRUCTIONAL SUPPLIES	MUIR CATEGORICAL	219.95	R
163026	MARCY COOK MATH	MATH MATERIALS, PRIMARY SDC	ROOSEVELT CATEGORICAL	229.81	R
163117	MBM SUPPLY	NURSE SUPPLIES	ROGERS FORMULA	110.89	U
162777	MCCARTHY, KEVIN	REIMBURSE/COMPUTER SUPPLIES	STATE & FEDERAL CATEGORICAL	86.60	R
162966	MCCRACKEN EDUCATIONAL SERVICES	SPELLING THROUGH PHONICS	ROOSEVELT FORMULA	102.43	U
163031	MCKEOWN, KEVIN	REIMBURSTMENT	COMPUTER SERVICES	465.08	U
162764	MICHAEL'S	OPEN ORDER/INSTRUCTIONAL ITEMS	STATE PRE-SCHOOL	75.00	CD
162978	MICHAEL'S	OPEN ORDER/ENRICHMENT SUPPLIES	SADCC - FULL COST	2,300.00	CD
162985	MICHAEL'S	OPEN ORDER/INSTRUCTIONAL ITEMS	CHILD DEVELOPMENT CENTER	75.00	CD
162998	MICHAEL'S	OPEN ORDER/INSTRUCTIONAL ITEMS	SADCC - SUBSIDIZED	104.00	CD
162594	MICRO BIO-MEDICS	OPEN ORDER/HEALTH SUPPLIES	FRANKLIN FORMULA	250.00	U
162926	MIRABAL, MARTY	OFFICE SUPPLIES/ATTEND. & MAIN	JOHN ADAMS FORMULA	96.72	U
162786	MOBILE STORAGE INC	STORAGE CONTAINER RENTAL	SPEC ED REG YR CATEGORICAL	720.00	R
162760	MODERN CURRICULUM PRESS	INSTRUCTIONAL SUPPLIES	FRANKLIN CATEGORICAL	133.59	R
162794	MODERN CURRICULUM PRESS	INSTRUCTIONAL SUPPLIES	FRANKLIN CATEGORICAL	56.64	R
163028	MOOK AND BLANCHARD	TEXT BOOKS/4TH.GRADE/DIAZ/ORUM	EDISON CATEGORICAL	190.24	R
162850	MUSICIANS BLVD.	INSTRUMENT RENTALS/JAMS	CURRICULUM & IMC	3,645.00	U
162862	MUSICIANS BLVD.	MUSIC INSTRUMENT RENTAL	CURRICULUM & IMC	1,935.00	U
163047	MUSICIANS BLVD.	MUSIC TEXT BOOKS FOR ELEM. MUS	STATE & FEDERAL CATEGORICAL	125.03	R
162911	NABE(NATIONAL ASSOCIATION FOR	MEMBERSHIP/DUES/MULTICULTURAL	CITY OF SM GIFT	48.00	R
163016	NANCY BRESLIN	REIM. CLASSROOM SUPPLIES	CABRILLO GIFT	409.64	R
162873	NASCO	ART SUPPLIES	GRANT FORMULA	455.94	U
162806	NASCO WEST	SCIENCE LAB MATERIALS	FRANKLIN CATEGORICAL	165.23	R
162743	NATIONAL TEXTBOOK CO	SOCIAL STUDIES TEXTBOOKS	SANTA MONICA HS CATEGORICAL	2,979.90	R
162755	NATURAL HISTORY MUSEUM	CLASSROOM COLLECTION/RENTAL	GRANT CATEGORICAL	800.00	R
162838	NEST ENTERTAINMENT INC	LIBRARY BOOKS AND VIDEOS	CABRILLO CATEGORICAL	205.29	R
162924	NEXTEL COMMUNICATIONS	PHONE	PERSONNEL COMMISSION	225.49	U
162945	NEXTEL COMMUNICATIONS	CELLULAR PHONES	SPEC ED REG YR UTIL CATEG	408.98	R
162496	NICO, GISA	REIMB./INSTRUCTIONAL SUPPLIES	STATE & FEDERAL CATEGORICAL	100.00	R
162738	O'BRIEN, MARIANNA	REIMB./INSTRUCTIONAL SUPPLIES	STATE & FEDERAL CATEGORICAL	100.00	R
162720	OCE' USA INC	EQUIP LEASE	SANTA MONICA HS FORMULA	6,411.08	U
162710	OLSHEIM, GLEN	REIMBURSEMENT/CLASSROOM SUPPLI	ROOSEVELT FORMULA	495.82	U
162877	OWL ASSOCIATES	READING RECOVERY BOOKS	ROGERS CATEGORICAL	74.66	R
162912	P & R PAPER SUPPLY CO	NURSE OFFICE SUPPLIES	DISTRICTWIDE	714.45	U
162321	PAGNET PAGING NETWORK	PAGER RENTAL/SERVICE	CURRICULUM & IMC	185.50	U
163021	PATTONS PHARMACY	EPIPENS	HEALTH SERVICES CATEGORICAL	2,617.49	R
162774	PERFECTION LEARNING CORP	Books	JOHN ADAMS CATEGORICAL	370.60	R

1d

SANTA MONICA-MALIBU UNIFIED SCHOOL DISTRICT
PURCHASE ORDERS TO BE APPROVED AT THE BOARD MEETING OF OCTOBER 19, 2000

PAGE 5

U-GENERAL FUND, UNRESTRICTED R-GENERAL FUND, RESTRICTED A-ADULT ED CD-CHILD DEVELOPMENT F-CAFETERIA
SF-SPECIAL FINANCING (FLEX) EX-PROPS and X D-DEVELOPER FEES EQ-EARTHQUAKE
SM-STATE MODERNIZATION NC-STATE NEW CONSTRUCTION

PO NO.	VENDOR	DESCRIPTION	LOCATION	AMOUNT	
162775	PERMABOUND/HERTZBERG	Books	JOHN ADAMS CATEGORICAL	265.31	R
162706	POLYTECH	CUSTODIAL SUP/PERMIT PROCEEDS	JOHN ADAMS FORMULA	790.40	U
162939	PRUNIER, SARAH	REIMB./INSTRUCTIONAL SUPPLIES	STATE & FEDERAL CATEGORICAL	55.20	R
162844	PUBLISHERS QUALITY LIBRARY	BOOKS	CABRILLO CATEGORICAL	982.26	R
162906	PUBLISHERS QUALITY LIBRARY	LIBRARY BOOKS	LINCOLN CATEGORICAL	1,599.08	R
162902	PURA CULTURA	OTHER BOOKS/MULTICULTURAL	CITY OF SM GIFT	573.45	R
163062	QUARLES, JOSEPH N.	IN-SERVICE SUPPLIES	EMPLOYEE RELATIONS	168.18	U
162968	QUINTESSENTIAL SCHOOL SYSTEMS	Consulting	COMPUTER SERVICES	1,500.00	U
162989	RDR SERVICES COMPANY	EARTHQUAKE BIN SUPPLIES	CABRILLO GIFT	139.43	R
162938	REAL EARTH ENVIRONMENTAL CO.	BINDERS WITH ENVIRONMENTAL INFO	FOOD SERVICES	243.56	F
162708	REIFMAN, STEVEN	REIMB./CLASSROOM SUPPLIES	ROOSEVELT FORMULA	151.65	U
163007	RESEARCH GRANT GUIDES	DIRECTORY-GRANTS BK	STATE & FEDERAL CATEGORICAL	75.41	R
163037	RIGBY BIG BOOKS & MORE	Early Readers/AM-PM Story Bks.	PT. DUME ELEMENTARY SCHOOL	870.23	U
163019	ROCKBOTTOM BOOKS	BOOKS	CABRILLO CATEGORICAL	1,233.13	R
162896	S & S ARTS & CRAFTS	INSTRUCTIONAL SUPPLIES	SACCC - SUBSIDIZED	69.21	CD
163036	S & S ARTS & CRAFTS	INSTRUCTIONAL SUPPLIES/	SAEDCC	146.90	U
163061	S & S ARTS & CRAFTS	INSTRUCTIONAL SUPPLIES/	SACCC - SUBSIDIZED	97.47	CD
162704	SAMARGE, PATRICIA	REIMBURSE PRINCIPAL	FRANKLIN FORMULA	117.54	U
162709	SAVAGE, CHRISTIE	REIMB./CLASSROOM SUPPLIES	ROOSEVELT FORMULA	187.96	U
162757	SAVIN CORP (FORMER GESTETNER)	GESTETNER SUPPLIES	GRANT GIFT	378.40	R
162729	SAX ARTS & CRAFTS	Books	JOHN ADAMS CATEGORICAL	353.50	R
162783	SCHMIDT, LAUREL	REIMBURSEMENT/CURRICULUM MAT.	SPEC ED EXT YR CATEGORICAL	406.86	R
162698	SCHOLASTIC MAGAZINES	INVOICE/PERIODICALS	LINCOLN CATEGORICAL	34.45	R
162699	SCHOLASTIC MAGAZINES	INVOICE/PERIODICALS	LINCOLN FORMULA	137.80	U
163018	SCHOLASTIC PROFESSIONAL BOOKS	BOOKS	CABRILLO CATEGORICAL	297.10	R
162907	SCHOOL NURSE SUPPLY INC	CABINETS FOR STUDENT MEDS	FRANKLIN GIFT	191.04	R
162670	SCHOOL SPECIALTY INC	INSTRUCTIONAL SUPPLIES	SANTA MONICA HS FORMULA	125.72	U
162883	SCHOOL SPECIALTY INC	REWARDS	ROGERS CATEGORICAL	73.07	R
162781	SCIENCE KIT & BOREAL LABS	SCIENCE LAB MATERIALS	FRANKLIN CATEGORICAL	133.32	R
162758	SCOTLAND, ALVA	REIMBURSE INST SUP/FOR.LANG	JOHN ADAMS FORMULA	63.56	U
162713	SCOTT FORESMAN & CO	TEXTBOOKS	MALIBU HIGH CATEGORICAL	5,002.73	R
162974	SCOTT FORESMAN & CO	BOOKS	OLYMPIC H.S. CATEGORICAL	204.10	R
162745	SECOND SUN	FLUORESCENT LAMPS	SANTA MONICA HS FORMULA	624.82	U
162674	SEHI COMPUTER PRODUCTS	COMPUTER SUPPLIES	MALIBU HIGH FORMULA	2,551.92	U
162791	SEHI COMPUTER PRODUCTS	printer	STATE & FEDERAL CATEGORICAL	211.17	R
162795	SEHI COMPUTER PRODUCTS	COMPUTER PRINTER	SANTA MONICA HS FORMULA	197.02	U
162705	SHAW CONTRACT FLOORING	IMPROVEMENTS/CARPETING	SADCC - FULL COST	4,218.00	CD
162957	SHPALL, JULIE	REIMBURSEMENT	GRANT FORMULA	176.14	U
163001	SHY, LEAH	REIMBURSE CLASSROOM SUPPLIES	CABRILLO GIFT	112.93	R
163041	SILVER BURDETT & GINN	3RD.GRADE MATH/CASTILLO	EDISON CATEGORICAL	1,304.59	R
162803	SIMONS CAMERA	AUDIO VISUAL EQUIPMENT	SANTA MONICA HS FORMULA	1,026.73	U
163053	SIMONS CAMERA	POLACOLOR FILM	INDEPENDNT STUDY FORMULA	96.77	U
162995	SIPORIN, HELEN	REIM. CLASSROOM SUPPLIES	CABRILLO GIFT	351.96	R
162842	SLOSSER, JUDITH	REIM. OFFICE SUPPLIES	CABRILLO GIFT	103.88	R
163000	SMART & FINAL	CLASSROOM SUPPLIES/CAFSAFE	CURRIC-IMC CATEGORICAL	1,000.00	R
162834	SNYDER, JULIA	REIMB./CLASSROOM SUPPLIES	CABRILLO GIFT	58.43	R
162763	SOUTH COAST AIR QUALITY	ANNUAL FEES-GENERATOR-MALIBU	FACILITY MAINTENANCE	276.44	U
162744	SOUTHWEST SCHOOL SUPPLY	CLASSROOM SUPPLIES	GRANT FORMULA	34.27	U
162765	SOUTHWEST SCHOOL SUPPLY	CLASSROOM SUPPLIES	GRANT FORMULA	31.39	U
162878	SOUTHWEST SCHOOL SUPPLY	CLASSROOM SUPPLIES	GRANT FORMULA	88.20	U
162890	SOUTHWEST SCHOOL SUPPLY	CLASSROOM SUPPLIES/TYMCHUK	GRANT FORMULA	106.46	U

SANTA MONICA-MALIBU UNIFIED SCHOOL DISTRICT
PURCHASE ORDERS TO BE APPROVED AT THE BOARD MEETING OF OCTOBER 19, 2000

PAGE 6

U-GENERAL FUND, UNRESTRICTED R-GENERAL FUND, RESTRICTED A-ADULT ED CD-CHILD DEVELOPMENT F-CAFETERIA
SF-SPECIAL FINANCING (FLEX) EX-PROP ES and X D-DEVELOPER FEES EQ-EARTHQUAKE
SM-STATE MODERNIZATION NC-STATE NEW CONSTRUCTION

PO NO.	VENDOR	DESCRIPTION	LOCATION	AMOUNT	
162892	SOUTHWEST SCHOOL SUPPLY	INSTRUCTIONAL SUPPLIES	SADCC - FULL COST	152.63	CD
163065	SOUTHWEST SCHOOL SUPPLY	INSTRUCTIONAL SUPPLIES	STATE PRE-SCHOOL	141.73	CD
163079	SOUTHWEST SCHOOL SUPPLY	INSTRUCTIONAL SUPPLIES	EDISON FORMULA	500.00	U
163087	SOUTHWEST SCHOOL SUPPLY	OFFICE SUPPLIES	OLYMPIC H.S. FORMULA	428.48	U
162887	SPICERS PAPER INC.	PRINT SHOP PAPER	PRINTING SERVICES	1,836.65	U
163055	STAPLES - DELIVERIES ONLY	OVERHEAD REPLACEMENT LAMPS	SMASH FORMULA	45.44	U
162749	STAPLES BUSINESS ADVANTAGE	OPEN ORDER/OFFICE SUPPLIES	CURRICULUM & IMC	500.00	U
162768	STAPLES BUSINESS ADVANTAGE	OPEN ORDER/OFFICE SUPPLIES	SAMOHI STUDENT STORE	250.00	U
162770	STAPLES BUSINESS ADVANTAGE	SCHOOL MERCHANDISE FOR RESALE	SAMOHI STUDENT STORE	250.00	U
162665	STAPLES/PICK UP/SANTA MONICA	OPEN ORDER/PHONE	SACCC - SUBSIDIZED	110.00	CD
162923	STAPLES/PICK UP/SANTA MONICA	OPEN ORDER/INSTRUCTIONAL ITEMS	CHILD DEVELOPMENT CENTER	50.00	CD
162925	STAPLES/PICK UP/SANTA MONICA	OPEN ORDER/INSTRUCTIONAL ITEMS	CHILD DEVELOPMENT CENTER	50.00	CD
162994	STAPLES/PICK UP/SANTA MONICA	OPEN ORDER/INSTRUCTIONAL ITEMS	STATE PRE-SCHOOL	125.00	CD
162841	STECK VAUGHN CO.	SPELLING WORKBOOKS	CABRILLO CATEGORICAL	130.59	R
162993	STECK VAUGHN CO.	WORKBOOKS	CABRILLO CATEGORICAL	714.03	R
162891	STERICYLE	CUSTODIAL CONTRACT WASTE DISP	FACILITY OPERATIONS	150.00	U
163051	SUZUKI COMPANY	RECORDERS MCKINLEY SCHOOL	STATE & FEDERAL CATEGORICAL	87.19	R
162921	TARGET STORES	OPEN ORDER/INSTRUCTIONAL ITEMS	CHILD DEVELOPMENT CENTER	100.00	CD
162922	TARGET STORES	OPEN ORDER/INSTRUCTIONAL ITEMS	CHILD DEVELOPMENT CENTER	50.00	CD
162977	TARGET STORES	OPEN ORDER/ENRICHMENT SUPPLIES	SADCC - FULL COST	2,300.00	CD
162996	TARGET STORES	OPEN ORDER/CLASSROOM SUPPLIES	CURRIC-IMC GIFT	400.00	R
163003	TARGET STORES	OPEN ORDER/INSTRUCTIONAL ITEMS	SACCC - SUBSIDIZED	150.00	CD
162888	TEACHER'S DISCOVERY	INSTRUCTIONAL SUP/FOR. LANG.	JOHN ADAMS FORMULA	104.68	U
162814	THOMPSON PUBLISHING GROUP	Admin. Resource Materials	ROOSEVELT GIFT	305.69	R
163091	TIMES COMMUNITY NEWS	PAYMENT FOR ADVERTISING	GRANT CATEGORICAL	84.00	R
162735	TOPHAM, CHRISTINE	REIMB./BOOKS	FRANKLIN FORMULA	131.89	U
163070	TOYS-R-US (SANTA MONICA)	OPEN ORDER/INSTRUCTIONAL TOYS	CHILD DEVELOPMENT CENTER	200.00	CD
162898	TRANSCOM USA/CARTER CO.	OPEN ORDER GROUNDS VEHICLE REP	GROUNDS MAINTENANCE	900.00	U
162748	U S OFFICE PRODUCTS	OPEN ORDER/OFFICE SUPPLIES	SPECIAL ED CATEGORICAL	500.00	R
162979	U S OFFICE PRODUCTS	LATERAL FILE	CURRICULUM & IMC	317.17	U
163112	U S OFFICE PRODUCTS	FILE CABINET	PURCHASING/WAREHOUSE SERVICES	150.54	U
162824	UNITED ASSET COVERAGE INC	Maintenance Agreement	COMPUTER SERVICES	8,045.75	U
162928	UNIVERSAL BOOKS	DICTIONARIES	JOHN ADAMS CATEGORICAL	611.60	R
161998	UTRECHT MANUFACTURING CORP	MIDDLE SCHOOL ART SUPPLIES	MALIBU HIGH GIFT	1,947.04	R
162593	VANTAGE LIGHTING	OVERHEAD PROJECTOR BULBS	FRANKLIN FORMULA	162.38	U
162932	VARGAS, PATRICIA	REIMB./BACK TO SCHOOL NIGHT SU	OLYMPIC H.S. GIFT	67.46	R
163032	VHPS ORDER DEPARTMENT	TEXTBOOKS	SANTA MONICA HS CATEGORICAL	6,130.08	R
162809	VIRCO MFG CORP	CLASSROOM FURNITURE	SANTA MONICA HS CATEGORICAL	261.49	R
162859	VIRCO MFG CORP	ROUND TABLE	EDISON FORMULA	63.94	U
163113	VIRCO MFG CORP	CLASSROOM FURNITURE	PURCHASING/WAREHOUSE SERVICES	452.60	U
162980	VONS MARKET-SANTA MONICA	OPEN ORDER/COOKING PROJECTS	CHILD DEVELOPMENT CENTER	90.00	CD
162982	VONS MARKET-SANTA MONICA	OPEN ORDER/COOKING/SCI/PROJECT	CHILD DEVELOPMENT CENTER	90.00	CD
162990	VONS MARKET-SANTA MONICA	OPEN ORDER/COOKING PROJECTS	SAEDCC	80.00	U
163059	VONS MARKET-SANTA MONICA	OPEN ORDER/COOKING PROJECTS	SACCC - SUBSIDIZED	90.00	CD
163060	VONS MARKET-SANTA MONICA	OPEN ORDER/COOKING PROJECTS	SACCC - SUBSIDIZED	90.00	CD
162875	WALLACE COMPUTER SVCS	Printer Ribbons	COMPUTER SERVICES	331.25	U
162837	WEEKLY READER PERIODICALS	CLASSROOM SUPPLIES	CABRILLO GIFT	72.40	R
162852	WEEKLY READER PERIODICALS	WEEKLY READER	MCKINLEY FORMULA	104.23	U
163020	WEEKLY READER PERIODICALS	WEEKLY READER	CABRILLO GIFT	68.46	R
163022	WEISS, SUMMER	INSTRUCTIONAL SUP/SPECIAL ED	JOHN ADAMS CATEGORICAL	171.39	R
163038	WEST COAST PRINT	REPORT CARDS	MCKINLEY FORMULA	205.68	U

17

SANTA MONICA-MALIBU UNIFIED SCHOOL DISTRICT
PURCHASE ORDERS TO BE APPROVED AT THE BOARD MEETING OF OCTOBER 19, 2000

PAGE 7

U-GENERAL FUND,UNRESTRICTED R-GENERAL FUND,RESTRICTED A-ADULT ED CD-CHILD DEVELOPMENT F-CAFETERIA
SF-SPECIAL FINANCING (FLEX) EX-PROP ES and X D-DEVELOPER FEES EQ-EARTHQUAKE
SM-STATE MODERNIZATION NC-STATE NEW CONSTRUCTION

PO NO.	VENDOR	DESCRIPTION	LOCATION	AMOUNT	
162962	WEST ED	SURVEY REPORT	STATE & FEDERAL CATEGORICAL	300.00	R
162719	WILLIAMS, A. DEE	REIMB./INSTR SUPPLIES	SANTA MONICA HS FORMULA	216.87	U
162796	WISHART, WILLIAM	REIMB./COMPUTER SUPPLIES	SANTA MONICA HS FORMULA	224.97	U
162833	WISHART, WILLIAM	REIMB/COMPUTER SUPPLIES	SANTA MONICA HS FORMULA	259.69	U
163035	WRIGHT GROUP,THE	Story Book Emergent Readers	PT. DUME ELEMENTARY SCHOOL	1,332.41	U
162972	XEROX CORP/SUPPLIES	Maintenance Agreement	ROOSEVELT GIFT	10,896.00	R
162973	XEROX CORP/SUPPLIES	Lease/cost per copy plan	ROOSEVELT GIFT	2,948.00	R
162627	ZOO PHONICS	TEXTBOOKS	MCKINLEY CATEGORICAL	254.68	R
** NEW PURCHASE ORDERS TOTAL:				208,033.21	

** FACILITY IMPROVEMENTS: PROP X/STATE MODERNIZATON/NEW CONSTRUCTION/DEVELOPER FEES **

162961	GRANTLAND DEVELOPMENT	PANELIZED CLASSROOM/ROOSEVELT	STATE SCHOOL FACILITIES PROGRM	169,704.00	NC
162986	MODCRAFT	RELOCABLES/ROOSEVELT	STATE SCHOOL FACILITIES PROGRM	112,226.82	NC
** FACILITY IMPROVEMENTS: PROP X/STATE MODERNIZATON/NEW CONSTRUCTION/DEVELOPER FEES TOTAL:				281,930.82	

TO: BOARD OF EDUCATION
FROM: SUPERINTENDENT
RE: ACCEPTANCE OF GIFTS

ACTION
10/19/00

RECOMMENDATION NO. A.3

It is recommended that the Board of Education accept, with gratitude, checks and gifts totaling \$66,726.00 presented to the Santa Monica-Malibu Unified School District.

It is further recommended that the Fiscal/Business Service Offices, in accordance with Educational Code 42602, be authorized to increase the 2000-2001 income and appropriations by \$64,726.00 as described on the attached listing.

COMMENT: The value of all non-cash gifts has been determined by the donors.

Also attached for informational purposes is a report itemizing Cumulative Totals of Gifts and Donations for Fiscal Year 2000/2001.

MOTION MADE BY: Ms. Brownley
SECONDED BY: Mr. Pratt

STUDENT ADVISORY VOTE: Aye
AYES: (6) Ms. Quiñones out of the room
NOES: None (0)

School/Site Account Number	Gift Amount	In-kind Value	Donor	Purpose
JAMS				
03-869900-000001100-0090	\$ 10,000.00		Santa Monica-Malibu Ed Foundation	Student Interns for Computer Labs
	\$ 6,170.00		Various Parents	Catalina Trip
	\$ 306.34		BJC Coca Cola Bottling Company	P.E. Instructional Supplies
	\$ 270.00		Various Parents	Computer Supplies
	\$ 132.00		Various Parents	Instructional Supplies: 6th Grade Cores
Adult Education				
03-869900-000009500-0090	\$ 800.00		Various Donors	Grounds Supplies
	\$ 425.00		Various Donors	Patio Donations
Alternative				
03-896600-00000900-0090	\$ 37.73		Various Students	Various Programs
Cabrillo				
03-869900-000001700-0090	\$ 1,265.00		Elan Vital	Non-Instructional Supplies
	\$ 450.00		Various Donors	Classroom Supplies, Retreat
	\$ 400.00		Various Donors	Instructional Supplies
CDS				
03-869900-000007700-0090	\$ 110.00		Edward Kim	McKinley Day Care
03-869900-000007000-0090				
Edison				
03-869900-000000100-0090	\$ 1,500.00		Thomas W. Boyd	Complete MacIntosh Performa System
Franklin				
03-869900-000000200-0090				
Grant				
03-869900-00000300-0090				
Lincoln				
03-869900-000001200-0090	\$ 200.00		Joan Hanson	Classroom Supplies
McKinley				
03-869900-000000400-0090	\$ 10,000.00		Adelphia	Marquis and Garden
	\$ 250.00		Todd Bernarding	Technology
	\$ 200.00		Mark Robinson	Field Trip Transportation: Rooms 205 and 209
	\$ 110.00		Edward Kim	Technology

School/Site	Account Number	Gift Amount	In-kind Value	Donor	Purpose
Malibu High School					
	03-869900-00001000-0090	\$ 1,291.00		Various Parents	Art Class Supplies
		\$ 570.00		Various Parents	Photo Class Supplies
		\$ 500.00		Mr. and Mrs. Jonathan Saver	WASC Accreditation Process Costs
		\$ 160.00		Various Parents	Culinary Arts Class Supplies
		\$ 100.00		Various Parents	Yearbook Class Expenses
		\$ 63.00		Various Parents	Instrumental Music Supplies
			\$ 500.00	Maud-Ann Sunderland	Computer and Printer for Classroom
Muir					
	03-869900-00000500-0090				
Muir/ SMASH Joint					
	03-869900-00001600-0090				
Olympic HS					
	03-869900-00001400-0090				
Rogers					
	03-869900-00000600-0090				
Roosevelt					
	03-869900-00000700-0090				
SaMoHi					
	03-869900-00001500-0090	\$ 12,290.00		Santa Monica Band Parents Association	Concert Band: Teacher Stipends, Special Svcs
		\$ 44.73		Coca-Cola Bottling Company	P.E. Department
		\$ 1.25		Carebar	Principal's Discretion
Barnum Hall					
	03-869900-00015900-0090	\$ 300.00		Mehran and Fariba Namiri-Kalantari	Restore Barnum Hall!
		\$ 300.00		Graham and Debra Wong	Restore Barnum Hall!
		\$ 150.00		Thomson and Pratt Insurance for Tom, Jackie and Chris Pratt	Restore Barnum Hall!
Pt. Dume					
	03-869900-00001900-0090	\$ 10,906.95		PDMS PTA	Instructional Aide - Quarterly Payment
		\$ 6,678.00		PDMS PTA	Payments: Computer, Photocopy & AV Equipment
		\$ 245.00		Various Parents	Field Trip Transportation: Pepperdine
Webster					
	03-869900-00000800-0090				
Educational Services					
	03-869900-00003000-0090				
	03-869900-11007001-0090				
SAPID					
	03-869900-50298300-0090				

School/Site	Account Number	Gift Amount	In-kind Value	Donor	Purpose
Student Services					
	03-869900-00004100-0090				
All Others:					
	Food Services				
	General				
		\$ 64,726.00	\$ 2,000.00		
NOTE:					

School/Site Account Number	Y-T-D Adjusted Gift Total	Current Gift Amount	Cumulative Gift Amount	Y-T-D In-Kind Value	Current In-Kind Value	Cumulative In-Kind Value
JAMS 03-869900-00001100-0090	\$ 24,750.00	\$ 16,878.34	\$ 41,628.34		\$	-
Adult Education 03-869900-00009500-0090	\$ 1,390.00	\$ 1,225.00	\$ 2,615.00		\$	-
Alternative 08-896600-00000900-0090	\$ 2,180.00	\$ 37.73	\$ 2,217.73		\$	-
Cabrillo 03-869900-00001700-0090	\$ 5,709.05	\$ 2,115.00	\$ 7,824.05		\$	-
CDS 03-869900-00007700-0090	\$ 220.00	\$ 110.00	\$ 330.00		\$	-
Edison 03-869900-00000100-0090			\$ -	\$ 1,500.00	\$ 1,500.00	1,500.00
Franklin 03-869900-00000200-0090	\$ 750.00		\$ 750.00		\$	-
Grant 03-869900-00003300-0090			\$ -		\$	-
Lincoln 03-869900-00001200-0090	\$ 125.00	\$ 200.00	\$ 325.00		\$	-
McKinley 03-869900-00000400-0090	\$ 220.00	\$ 10,560.00	\$ 10,780.00		\$	-
Malibu High School 03-869900-00001000-0090	\$ 7,402.00	\$ 2,684.00	\$ 10,086.00	\$ 1,000.00	\$ 500.00	\$ 1,500.00

School/Site	Y-T-D Adjusted Gift Total	Current Gift Amount	Cumulative Gift Amount	Previous In-Kind Value	Current In-Kind Value	Cumulative In-Kind Value
Muir						
03-869900-00000500-0090	\$ 2,527.21		\$ 2,527.21			\$ -
Muir/Smash Joint						
			\$ -			
Olympic HS						
03-869900-00001400-0090	1,608.36		\$ 1,608.36			\$ -
Rogers						
03-869900-00000600-0090	\$ 309.59		\$ 309.59			\$ -
Roosevelt						
03-869900-00000700-0090	\$ 23,210.29		\$ 23,210.29			\$ -
SaMoHi						
03-869900-00001500-0090	\$ 266.31	\$ 12,335.98	\$ 12,602.29			\$ -
03-869900-00001500-0090			\$ -			
Barnum Hall						
03-869900-00001500-0090	\$ 6,890.00	\$ 750.00	\$ 7,640.00			\$ -
Pt. Dume						
03-869900-00001900-0090	\$ 14,401.34	\$ 17,829.95	\$ 32,231.29			\$ -
Webster						
03-869900-00000800-0090			\$ -			\$ -
Ed Services						
03-869900-00003000-0090			\$ -			\$ -
03-869900-24053800-0090			\$ -			\$ -
03-869900-1107001-0090	\$ 200.00		\$ 200.00			\$ -
SAPID						
03-869900-50298300-0090			\$ -			\$ -
Student Services						
03-869900-00004100-0090			\$ -			\$ -
All Others: Food Services Building Fund			\$ -			\$ -
			\$ -			\$ -
TOTAL GIFTS	\$ 92,159.15	\$ 64,726.00	\$ 156,885.15	\$ 1,000.00	\$ 2,000.00	\$ 3,000.00

TO: SUPERINTENDENT ACTION
10/19/00

FROM: ARTHUR L. COHEN/ROBERT A. CUTTING

RE: CONFERENCE AND TRAVEL APPROVAL/RATIFICATION

RECOMMENDATION NO. A.4

It is recommended that the Board of Education approve/ratify the following Request for Absence of District Business (Conference and Travel) forms.

COMMENTS: Entries are alphabetical, by employee last name. In addition to the employees name and site/location, each entry contains the following information: name, location and date(s) of the conference, complete account code, fund and program names, and the total estimated cost as provided by the site administrator. The average cost for substitute teachers is \$130/day. The figure is furnished for informational purposes and does not reflect the actual amount paid for an individual substitute.

NAME SITE ACCOUNT NUMBER FUND AND PROGRAM NAME	CONFERENCE NAME LOCATION DATE (S)	COST ESTIMATE
BAXTER, Catherine Samohi No Cost to District	Mills College Counselor Program Oakland, CA December 3-5, 2000	N/A
BOUSE, Amy Samohi 03-522000-24457800-1009 Restricted - SB1882/ CPDP	Advanced Placement Workshop Altadena, CA October 14, 2000	\$105.00
BRADY, Pam Board of Education 01-522000-40085000-2000 General Fund - District Administration	CSBA Back-to-School Conference Ontario, CA September 27, 2000	\$160.00
CASILLAS, Elizabeth Samohi 03-522000-25475800-1509 Restricted - SB 1882/ CPDP	Essentials of Communicating with Tact and Finesse Oxnard, CA November 1-2, 2000	\$395.00

NAME SITE ACCOUNT NUMBER FUND AND PROGRAM NAME	CONFERENCE NAME LOCATION DATE (S)	COST ESTIMATE
deMELLO, Flavia Adult Education Center 03-522000-25059500-9500 AEC - Section 231/Priority 1	Coming to Grips with the Learning Levels in Your Classroom Anaheim, CA October 26, 2000 Winning Strategies for Teaching English Language Learners Long Beach, CA November 1, 2000	\$250.00 + sub \$250.00 + sub
ESQUIVEL, Rita Adult Education Center 29-522000-25059500-9500 AEC - Section 231/Priority One	Adult Education Regional Meeting Burbank, CA October 4, 2000	\$20.00
FREEDMAN, Marolyn Student Services 03-522000-25076400-4409 Restricted - PL94-142: Non-Ris PreSchool	Recent Legal Issues in Special Education :2001 Costa Mesa, CA October 19, 2000	\$236.20
GEE, Sue Educational Services 01-522000-24051000-3000 General Fund - Instructional Administration	Superintendents/Principals Collaborative La Canada, CA October 12, 2000	\$50.00
JAGO, Carol Samohi No Cost to District	LAAMP Literacy Conference Los Angeles, CA October 19, 2000 California Reading Association San Jose, CA November 3 -5, 2000 CRLP Leadership Meetings Irvine, CA December 13-15, 2000	Subs paid by California Reading and Literature Project
LEDOUX, Joe Cabrillo 03-522000-25057600-3509 Restricted - BTSA	Succeeding with Difficult Students & ADD/ADHD Students Long Beach, CA October 18, 2000	\$200.00 + sub
LIN, Mary Samohi 03-522000-25475800-1509 Restricted - SB 1882/ CPDP	CPM Make-up Workshops Lakeside, CA September 23 and 30, 2000	\$425.00
MARTINEZ, Elizabeth Edison No Cost to District	Lieutenant Governor's Commission for One California Los Angeles, CA September 21, 2000	sub only

NAME SITE ACCOUNT NUMBER FUND AND PROGRAM NAME	CONFERENCE NAME LOCATION DATE (\$)	COST ESTIMATE
VACA, Jesus Educational Services 03-522000-40085000-5100 Restricted - District Administration	Los Angeles County Bilingual Directors Meetings Various Locations 9/22, 10/2-, 11/17, 12/15/2000 and 1/12, 2/9, 3/16, 4/27, 5/25, 6/15, 6/21/00	\$200.00
<p style="text-align: center;">Adjustments</p> <p style="text-align: center;">(Preapproved expenses 10% in excess of approved costs that must be approved by the Board; Changes in personnel attendance)</p>		
None		
<p style="text-align: center;">In-State Conference and Travel: Group</p> <p style="text-align: center;">* a complete list of participants is on file in the Department of Fiscal Services</p>		
BEARD, Clara HOLLIE, Ada Samohi 03-522000-25475800-1509 Restricted - SB 1882/ CPDP	CSU Counselor's Conference Pasadena, CA September 28, 2000	\$30.00
WELFORD, Michelle WILLIAMS, Heather Samohi 03-522000-25475800-1509 Restricted - SB 1882/ CPDP	California Math Council Annual Conference Palm Springs, CA November 4-5, 2000	not to exceed \$100.00 each + subs
<p style="text-align: center;">Out-of-State Conference and Travel: Individual</p>		
KELLY, Mark Samohi 03-522000-25475800-1509 Restricted - SB 1882/ CPDP	College Board National Conference New York, NY October 28- 31, 2000	not to exceed \$335.00
RAMIREZ, Luis JAMS 03-522000-24053500-3408 Restricted - City of Santa Monica/ Mutlicultural Program	La Cosecha de Otono Albuquerque, NM November 13-15, 2000	\$620.00 + sub
JAGO, Carol Samohi No Cost to District	National Council of Teachers of English Conference Milwaukee, WI November 16-20, 2000	+ sub (paid by UCLA CRLP)

MOTION MADE BY: Ms. Brownley

SECONDED BY: Mr. Pratt

STUDENT ADVISORY VOTE: Aye

AYES: (6) Ms. Quiñones out of the room

NOES: None (0)

TO: BOARD OF EDUCATION

ACTION
10/19/00

FROM: SUPERINTENDENT/SUE GEE

RE: APPROVAL OF INDEPENDENT CONTRACTORS

RECOMMENDATION NO. A.5

It is recommended that the Board of Education enter into an agreement with the following Independent Contractors. These contracts are included in the 2000/2001 budget.

Contractor/Contract Dates	Description	Site	Funding
Didi Hirsch Community Mental Health Center October 1, 2000-June 30, 2001 Cost: Not to exceed \$5,000	To provide substance abuse prevention and intervention services at Santa Monica High School, Olympic High School and Lincoln Middle School	Educational Services/ Samohi	Title IV - Safe & Drug Free Schools \$2,000 03-511000-25077200-3509 Samohi Alliance \$3,000 03-511000-24052200-1509
Family Service of Santa Monica October 1, 2000-June 30, 2001 Cost: Not to exceed \$12,750	To provide crisis intervention counseling and case management for an identified group of depressed young women at Olympic High School	Educational Services	Los Angeles Women Foundation - Morgan Leslie Segal Fund 03-511000-24050200-3009
Jewish Family Service October 1, 2000-June 30, 2001 Cost: Not to exceed \$7,500	To provide counseling and Alcohol, Tobacco and Other Drug prevention services for students K-5 at Grant Elementary school and provide group counseling and coordinated case management for Alliance students at Santa Monica High School	Educational Services/ Samohi	Title IV - Safe & Drug Free Schools \$4,000 03-511000-25077200-3509 Samohi Alliance \$3,500 03-511000-24052200-1509
Rosie Landeros September 1, 2000-June 30, 2000 Cost: Not to exceed \$5,000	To provide Mommy and Me sessions for Infant & Family Support Program	Educational Services	Infant & Family Support Program 03-511000-24051600-3009
YWCA/Barbara Ollinger September 5, 2000-June 30, 2001 Cost: Not to exceed \$2,000	To provide Mommy & Me/ Toddler and Me sessions for Infant & Family Support Program	Educational Services	Infant & Family Support Program 03-511000-24051600-3009

Contractor/Contract Dates	Description	Site	Funding
Julie Hulbert 09/05/00-06/30/01 Total amount of contract not to exceed \$27,000.	Registered Nurse to provide for the educationally related health needs of a kindergarten student with accute diabetes	Student Services	Student Services - Health Services 01-171500-30082000-4190
Eleanore U. Meyer School Physician Consultant 08/31/00-06/30/01 Total amount of contract not to exceed \$25,000.	Provide medical consultation services for the district, particularly school nurses	Student Services	Student Services - MediCal reimbursement 03-51100-3058000-4109

MOTION MADE BY: Ms. Brownley
 SECONDED BY: Mr. Pratt

STUDENT ADVISORY VOTE: Aye
 AYES: (6) Ms. Quiñones out of the room
 NOES: None (0)

TO: BOARD OF EDUCATION

ACTION
10/19/00

FROM: SUPERINTENDENT / JOSEPH N. QUARLES

RE: APPROVE THE CONTRACT FOR LEGAL SERVICES PROVIDED BY
ATKINSON, ANDELSON, LOYA, RUUD & ROMO / ATTORNEYS AT
LAW

RECOMMENDATION NO. A.6

It is recommended that the Santa Monica-Malibu Unified School District enter into an agreement with Atkinson, Andelson, Loya, Ruud, and Romo, Attorneys at Law, for legal services provided on an as needed basis.

COMMENTS: The firm currently represents approximately 265 school districts throughout the State of California including many in the West Los Angeles and South Bay Area. The firm has successfully represented school districts in a number of precedent setting cases.

Eighteen of the firm's attorneys are currently serving in Southern California and specialize in public sector school law and labor relations. They also have extensive experience in collaborative or interest-based collective bargaining.

MOTION MADE BY: Ms. Brownley

SECONDED BY: Mr. Pratt

STUDENT ADVISORY VOTE: Aye

AYES: (6) Ms. Quiñones out of the room

NOES: None (0)

TO: BOARD OF EDUCATION

ACTION
10/19/00

FROM: SUPERINTENDENT/ARTHUR L. COHEN

RE: GRANT OF EASEMENT - WEBSTER ELEMENTARY SCHOOL

RECOMMENDATION NO. A.7

It is recommended that the Board of Education approve the following Grant of Easement on the District's Webster Elementary School site to Southern California Edison (SCE), as requested in its letter of September 25, 2000.

COMMENTS: The granting of this easement is required by Southern California Edison in order to install fiber optic cable for commercial use within the existing SCE easement area. The District's property affected by this easement is Webster Elementary School (see enclosed map for affected area).

MOTION MADE BY: Ms. Brownley
SECONDED BY: Mr. Pratt

STUDENT ADVISORY VOTE: Aye
AYES: (6) Ms. Quiñones out of the room
NOES: None (0)

MARMAC ENGINEERING

1821 East Dyer Road, Suite 250, Santa Ana, CA 92705-5705 • (949) 809-5800 • Fax (949) 809-5850

September 25, 2000

Mr. Rick Demuth
Assistant Director of Facilities
Santa Monica Malibu Unified School District
1651 16th Street
Santa Monica, CA 90404

Re: Grant of Easement
APN 4458-027-904
Tapia Project

2000 SEP 27 A 9:39

Dear Mr. Demuth:

MARMAC Engineering is working under the direction of Southern California Edison (SCE) to acquire a "Grant of Easement" for SCE to install fiber optic cable for commercial use within the existing SCE easement area affecting your property located at Winter Canyon Road at Civic Center Way. The existing line is overhead of both the entrance road to property and the southwest corner of a parking lot.

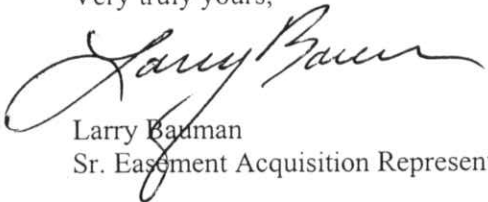
SCE has the ability through prescriptive rights to install electrical facilities and to provide communications services for its own use, but would like to have the right to lease excess capacity in its fiber optic cable for commercial purposes. The new line will be installed overhead on existing electrical transmission poles that are on the easterly and southerly portion of your property. Since the new line will be added to those overhead lines already in place, there will be no adverse impact to the property.

I have enclosed a copy of the "Grant of Easement" for your review. After reviewing the document and if it meets with your approval, please sign, **notarize** and return the original in the pre-addressed, stamped envelope. The copy is for your files. Also sign and return the Seller's Affidavit and 1099-S Form.

A total compensation of Five Hundred Ten and no/100 Dollars (\$510.00) is being offered for the easement. This compensation is based on linear feet across property (168 feet). SCE will also reimburse you for the notary fee if you send us your notary receipt.

If you have any questions, please don't hesitate to call. I can be reached at (949) 809-5800. Thank you for your time and cooperation in this matter.

Very truly yours,



Larry Bauman
Sr. Easement Acquisition Representative

Enclosure Grant of Easement
Seller's Affidavit
Land Plat
SASE

2000 SEP 27

RECEIVED
FACILITIES
DEPT

1919/00
Boz agenda

SCALE 1" = 60'

SHEET 2 OF 4 SHEETS

TRACT No 28992

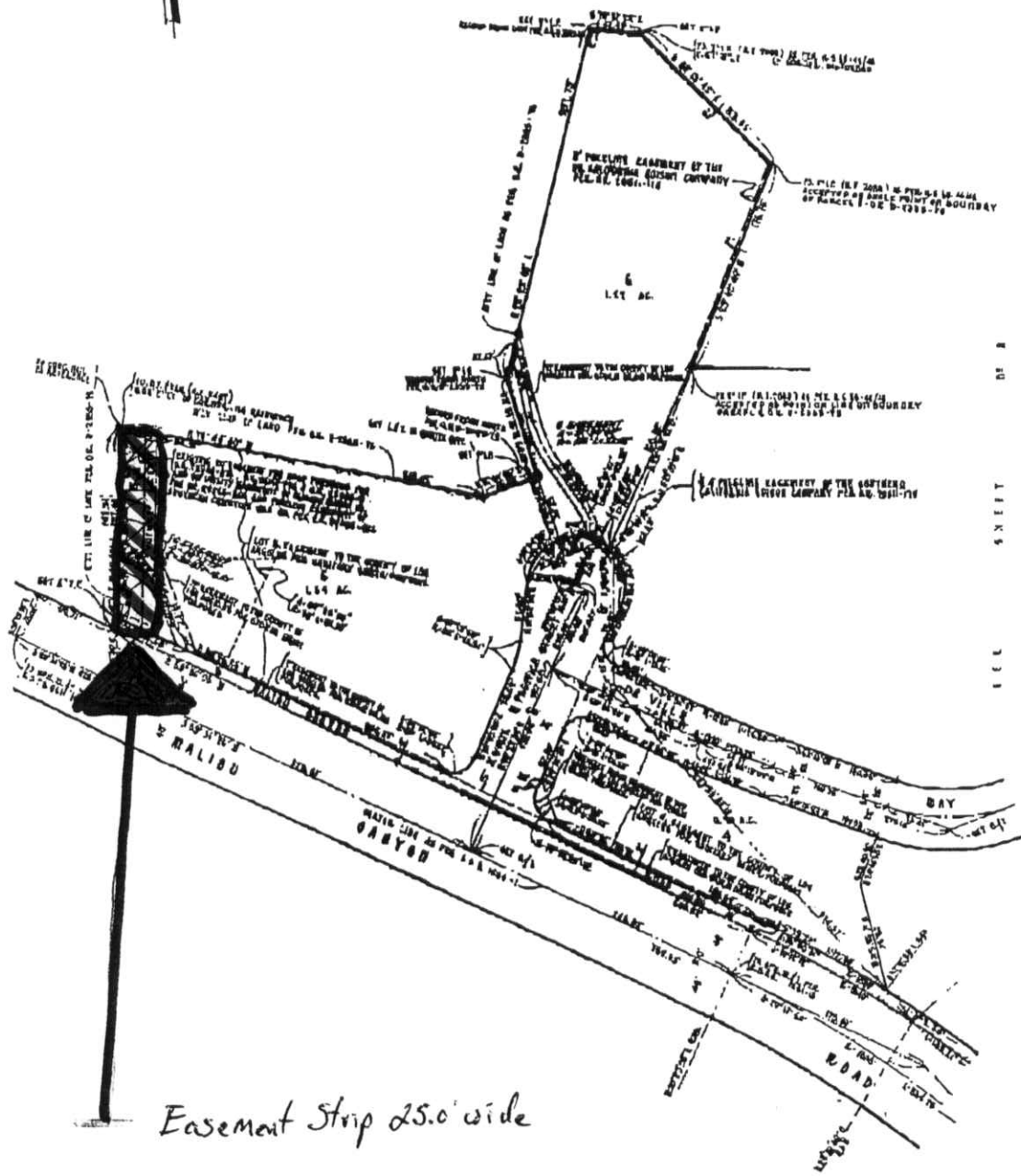
IN THE UNINCORPORATED TERRITORY OF THE COUNTY OF LOS ANGELES

ENGINEERED BY:
OCCIDENTAL ENGINEERING CO.

4274 19.2

RECORDED
AT REQUEST OF OFFICE
FEB 4 1966
50 3 RM
786
OF THE RECORDS
LOS ANGELES COUNTY, CALIF.
RAT'S LEE
COUNTY RECORDER

APN 4458-027-904



THIS ITEM PULLED BY STAFF

TO: BOARD OF EDUCATION ACTION
10/19/00
FROM: SUPERINTENDENT/KEVIN MCCARTHY
RE: APPROVAL OF CONSOLIDATED APPLICATION PART II

RECOMMENDATION NO. A.8

It is recommended that the Board of Education approve the Consolidated Application Part II 2000-2001.

Comment: The Consolidated Application Part II is a document that is submitted to the California State Department of Education every Fall by all school districts that receive funding for categorical programs. Based on the Statistical information in Part I of the Consolidated Application, the state allocates funding for each of the specific programs that each school is eligible to participate in.

Part II of the Consolidated Application for Funding Categorical Aid Programs contains our district's information related to entitlements, allocations, and number of participants in special programs. Expenditures of most categorical aid is legally restricted to its particular purpose.

A copy of the grant application is on file in the Superintendent's office and the Education Services Department.

**THIS ITEM PULLED BY STAFF AND
TO BE PLACED ON THE NOVEMBER 2, 2000 AGENDA**

MOTION MADE BY:
SECONDED BY:

STUDENT ADVISORY VOTE:
AYES:
NOES:

TO: BOARD OF EDUCATION

ACTION
10/19/00

FROM: SUPERINTENDENT/SUE GEE/KEVIN MCCARTHY

RE: CARL D. PERKINS VOCATIONAL AND APPLIED TECHNOLOGY
APPLICATION

RECOMMENDATION NO. A.9

It is recommended that the Board of Education approve the Vocational Education Application for Funding Carl D. Perkins Vocational and Applied Technology Education Act Amendments of 1990 at Santa Monica High School in the amount of ~~\$52.00~~ \$54,188 for the 00-01 school year.

Comment: It is the purpose of the Carl D. Perkins Vocational and Applied Technology Act to make the District more competitive in the world of economy by developing more fully the academic and occupational skills of all segments of the student population.

This purpose will principally be achieved through concentrating resources on improving educational programs leading to academic and occupational skill competencies needed to work in a technologically advanced society. These federal funds may only be used for program improvement which includes the full participation of special populations.

MOTION MADE BY: Ms. Brownley

SECONDED BY: Mr. Pratt

STUDENT ADVISORY VOTE: Aye

AYES: (6) Ms. Quiñones out of the room

NOES: None (0)

TO: BOARD OF EDUCATION

ACTION
10/19/00

FROM: SUPERINTENDENT/SUE GEE/KATHY MCTAGGART

RE: APPROVAL OF FUNDING - LA WOMEN'S FOUNDATION TRACK SEED
GRANT: MORGAN LESLIE SEGAL FUND

RECOMMENDATION NO. A.10

It is recommended that the Board of Education approve the grant submitted to continue the program of case management, collaborative intervention and support for identified young women attending Olympic Continuation High School. The goal of the funding from the Los Angeles Women's Foundation is to address the mental health needs of under-represented young women. This funding will once again enable Olympic not only to increase the level of direct counseling services to identified participants but also to develop mechanisms for coordination and collaboration with other youth-serving networks at the site, in the district and in the wider community.

BACKGROUND AND RATIONALE:

Olympic students often experience disruptions in their lives and face great challenges educationally, socially, vocationally and emotionally. Having the services of a social worker, a person culturally representative of and sensitive to the needs of the young women attending Olympic, will significantly increase the quantity and quality of services available to them. Anticipated outcomes include: improved attendance; greater academic success; more optimism about and concrete plans for a future involving post-secondary education and/or high-goals career aspirations, and improved quality of life and interpersonal relations.

MOTION MADE BY: Ms. Brownley

SECONDED BY: Mr. Pratt

STUDENT ADVISORY VOTE: Aye

AYES: (6) Ms. Quiñones out of the room

NOES: None (0)

TO: BOARD OF EDUCATION

ACTION
10/19/00

FROM: SUPERINTENDENT / RICK BAGLEY

RE: APPROVAL OF DESIGNATED VOLUNTEERS

RECOMMENDATION NO. A.11

It is recommended that the Board approve the local site designation of all volunteers for the 2000-01 school year. It is further recommended that the Board of Education authorize site principals to be responsible for maintaining a current and accurate list of all volunteers at their sites and ensure that no person is allowed to volunteer without the proper clearances, as mandated by law.

COMMENT: Volunteers provide a variety of indispensable services to the district, including helping with students in the classroom, yard supervision, driving band and football equipment to games and helping in the school offices. For volunteers to be covered by the District's insurance policies, they must be approved by the Board of Education. All volunteers must be designated by the Site administrator.

As a followup, a revised Board Policy regarding volunteers will be placed on the November 2, 2000 agenda for first reading.

MOTION MADE BY: Ms. Brownley

SECONDED BY: Mr. Pratt

STUDENT ADVISORY VOTE: Aye

AYES: (6) Ms. Quiñones out of the room

NOES: None (0)

TO: BOARD OF EDUCATION

ACTION
10/19/00

FROM: SUPERINTENDENT/ROBERT A. CUTTING

RE: DENIAL OF CLAIM (employee #6268)

RECOMMENDATION NO. A.12

It is recommended that the Board of Education reject the claim presented by employee-#6268 on September 12, 2000. This claim was forwarded to the District's Insurance Administrator for determination.

COMMENT: Claimant alleges damages due to non-renewal of teaching contract.

Amount of claim - As yet to be determined.

MOTION MADE BY: Ms. Brownley
SECONDED BY: Mr. Pratt

STUDENT ADVISORY VOTE: Aye
AYES: (6) Ms. Quiñones out of the room
NOES: None (0)

TO: BOARD OF EDUCATION

ACTION

10/19/00

FROM: SUPERINTENDENT/ROBERT A. CUTTING

RE: DENIAL OF CLAIM (student DOB 9/24/82)

RECOMMENDATION NO. A.13

It is recommended that the Board of Education reject the claim presented on behalf of student (dob 9/24/82) by students parents on July 31, 2000. This claim was forwarded to the District's Insurance Administrator for determination.

COMMENT: Claimant alleges damages due to District's refusal and failure to ensure compliance with required accommodations for a student with disabilities; denial of equal opportunity; professional negligence and inability/refusal to follow mandated timeliness in state education code.

Amount of claim - \$4,500,000.00

MOTION MADE BY: Ms. Brownley

SECONDED BY: Mr. Pratt

STUDENT ADVISORY VOTE: Aye

AYES: (6) Ms. Quiñones out of the room

NOES: None (0)

TO: BOARD OF EDUCATION

ACTION
10/19/00

FROM: SUPERINTENDENT/JOSEPH QUARLES/RICK BAGLEY

RE: CERTIFICATED PERSONNEL - Elections, Separations

RECOMMENDATION NO. A.14

ELECTIONS

ADDITIONAL ASSIGNMENTS

<u>Name/Location</u>	<u>Rate</u>	<u>Effective</u>	<u>Not to Exceed</u>
<u>ADAMS</u>			
Goldberg, Cori	180 hrs @\$43.74	9/5/00-6/22/01	Own Hrly/\$7,873
Palmer, Dorothy	180 hrs @\$63.73	9/5/00-6/22/01	Own Hrly/11,471
Shockley, Walter	180 hrs @\$60.60	9/5/00-6/22/01	Own Hrly/10,908
Washington, Ted	180 hrs @\$60.60	9/5/00-6/22/01	Own Hrly/10,908
Whitaker, Cathie	180 hrs @\$60.60	9/5/00-6/22/01	<u>Own Hrly/10,908</u>
		TOTAL OWN HOURLY	\$52,068

Comment: One Additional Class
01-Classroom Instruction 6-8

Avedian, Ray	72 hrs @\$34.90	9/18/00-6/22/01	Est Hrly/\$2513
Brown, Dan	72 hrs @\$34.90	9/18/00-6/22/01	Est Hrly/\$2513
Cady, Linda	72 hrs @\$34.90	9/18/00-6/22/01	Est Hrly/\$2513
Dipley, Jeri	72 hrs @\$34.90	9/18/00-6/22/01	Est Hrly/\$2513
Frumovitz, Alex	72 hrs @\$34.90	9/18/00-6/22/01	Est Hrly/\$2513
Gray, Shana	72 hrs @\$34.90	9/18/00-6/22/01	Est Hrly/\$2513
Mikulak, Tracy	72 hrs @\$34.90	9/18/00-6/22/01	Est Hrly/\$2513
Moore, Jon	72 hrs @\$34.90	9/18/00-6/22/01	Est Hrly/\$2513
Steinmetz, Brigitte	72 hrs @\$34.90	9/18/00-6/22/01	<u>Est Hrly/\$2513</u>
		TOTAL ESTABLISHED HOURLY	\$22,617

Comment: After school science magnet seminars
01-Magnet Prgm

Lang, Justine	\$400	9/8/00-9/10/00	Stipend/\$400
Mikulak, Tracy	\$400	9/8/00-9/10/00	Stipend/\$400
Post, Joel	\$400	9/8/00-9/10/00	Stipend/\$400
Sato, Glenn	\$400	9/8/00-9/10/00	Stipend/\$400
Scotland, Alva	\$400	9/8/00-9/10/00	Stipend/\$400
Steinmetz, Brigitte	\$400	9/8/00-9/10/00	<u>Stipend/\$400</u>
		TOTAL STIPEND	\$2,400

Comment: Chaperone 6th Gr Science Enrichment Trip to Catalina
01-Magnet Prgrm

Hart, Matthew	152 hrs @\$34.90	9/5/00-6/22/01	Est Hrly/\$5305
LaDuke, Nan	152 hrs @\$34.90	9/5/00-6/22/01	<u>Est Hrly/\$5305</u>
		TOTAL ESTABLISHED HOURLY	\$10,610

Comment: Saturday Scholars Tutoring
03-SIP K-6

Frumovitz, Alex	\$400	9/29/00-10/1/00	Stipend/\$400
Mikulak, Tracy	\$400	9/29/00-10/1/00	<u>Stipend/\$400</u>
		TOTAL STIPEND	\$800

Comment: Chaperone 2nd 6th Gr Science Enrichment Trip to Catalina
01-Magnet Prgm

Hernandez, Amanda	140 hrs @\$34.90	9/23/00-6/22/01	Est Hrly/\$4886
Jenkins, Marilyn	140 hrs @\$34.90	9/23/00-6/22/01	Est Hrly/\$4886
McCarthy, Marcia	140 hrs @\$34.90	9/23/00-6/22/01	Est Hrly/\$4886
Moore, Jon	140 hrs @\$34.90	9/23/00-6/22/01	Est Hrly/\$4886
Whitaker, Cathie	140 hrs @\$34.90	9/23/00-6/22/01	Est Hrly/\$4886
		TOTAL ESTABLISHED HOURLY	\$24,430

Comment: Saturday Scholars Tutoring
03-SIP k-6

ADULT EDUCATION

Alcazar, Jose	722 hrs @\$34.90	9/9/00-6/30/01	Est Hrly/\$25,198
		TOTAL ESTABLISHED HOURLY	\$25,198

Comment: ESL/Citizenship Teacher
29-ESL/Citizenship

EDUCATIONAL SERVICES

Plepler, Sherman	61.5 days @\$308.06	9/5/00-6/22/01	Own Daily/\$18,946
		TOTAL OWN DAILY	\$18,946

Comment: Music Teacher
01-Music

Labov, Lauren	74 hrs @\$34.90	7/1/00-6/30/01	Est Hrly/\$2583
		TOTAL ESTABLISHED HOURLY	\$2,583

Comment: Service Learning Coordinator, CalServe Learning Program
03-CalServ Serv Learning

FRANKLIN

Cornford, Linda	19 hrs @\$34.90	9/5/00-6/22/01	Est Hrly/\$663
Strate, Stephen	38 hrs @\$34.90	9/5/00-6/22/01	Est Hrly/\$1326
		TOTAL ESTABLISHED HOURLY	\$1,989

Comment: Technology Support to Staff
01-Tech/Inst 2hr Media/Lib PK

LINCOLN

Janulaitis, Donna	21 days @\$227.17	8/31/00-10/1/00	Own Daily/\$4771
		TOTAL OWN DAILY	\$4,771

Comment: Temporary nurse coverage
01-Health

Crawford, Joan	91.5 hrs @\$44.18	9/18/00-6/22/01	Own Hrly/\$4042
		TOTAL OWN HOURLY	\$4,042

Comment: Extra assignment - 6th gr coordinator
01-Classroom Instruction 6-8

Asgharzadeh, Rozita	91.5 hrs @\$54.85	8/31/00-6/22/01	Own Hrly/\$5019
Hart, Sharon	137.25 hrs @\$45.50	8/31/00-6/22/01	Own Hrly/\$6245
Jones, Julie	45.75 hrs @\$36.15	8/31/00-6/22/01	Own Hrly/\$1654
Kramer, Steve	91.5 hrs @\$62.52	8/31/00-6/22/01	Own Hrly/\$5721
Obusek, John	91.5 hrs @\$49.32	8/31/00-6/22/01	Own Hrly/\$4513
Rasmussen, Craig	183 hrs @\$32.34	8/31/00-6/22/01	Own Hrly/\$5918
Rogers, Alan	137.25 hrs @\$32.34	8/31/00-6/22/01	Own Hrly/\$8581
Seymour, Robert	183 hrs @\$48.40	8/31/00-6/22/01	Own Hrly/\$8857
Valenzuela, Amanda	45.75 hrs @\$49.74	8/31/00-6/22/01	Own Hrly/\$2276
		TOTAL OWN HOURLY	\$48,784

Comment: Extra periods
01-Classroom Instruction 6-8

Hirt, Mary	166 hrs @\$48.47	9/25/00-6/22/01	<u>Own Hrly/\$8046</u>
		TOTAL OWN HOURLY	\$8,046

Comment: Extra 6th period
01-Classroom Instruction 6-8

Hirt, Mary	40 hrs @\$34.90	8/15-19/00	<u>Est Hrly/\$1396</u>
		TOTAL ESTABLISHED HOURLY	\$1,396

Comment: Locker Room Preparation
03-SIP 7-8

MALIBU

Poole, William	326 hrs @\$60.14	8/31/00-6/22/01	<u>Own Hrly/\$19,605</u>
		TOTAL OWN HOURLY	\$19,605

Comment: Wood Shop
01-Classroom Instruction 9-12

Corrigan, Brian	173 hrs @\$47.19	9/14/00-6/22/01	<u>Own Hrly/\$8164</u>
		TOTAL OWN HOURLY	\$8,164

Comment: Extra 6th period
01-Classroom Instruction 9-12

Bowman-Smith, Carla	144 hrs @\$34.90	9/23/00-6/22/01	<u>Est Hrly/\$5026</u>
David-Maria, Diana	144 hrs @\$34.90	9/23/00-6/22/01	<u>Est Hrly/\$5026</u>
Knight, Michele	144 hrs @\$34.90	9/23/00-6/22/01	<u>Est Hrly/\$5026</u>
Lovejoy, Anna	144 hrs @\$34.90	9/23/00-6/22/01	<u>Est Hrly/\$5026</u>
Prunier, Sarah	144 hrs @\$34.90	9/23/00-6/22/01	<u>Est Hrly/\$5026</u>
		TOTAL ESTABLISHED HOURLY	\$25,130

Comment: Saturday School Teachers
01-Sat Work-Study

MCKINLEY

Bannatyne, Elaine	12 hrs @\$34.90	9/5/00-6/22/01	<u>Est Hrly/\$419</u>
Curry, Ed	12 hrs @\$34.90	9/5/00-6/22/01	<u>Est Hrly/\$419</u>
Duran-Valian,			
Concepcion	12 hrs @\$34.90	9/5/00-6/22/01	<u>Est Hrly/\$419</u>
Galvan, Janine	12 hrs @\$34.90	9/5/00-6/22/01	<u>Est Hrly/\$419</u>
Herman, Melissa	12 hrs @\$34.90	9/5/00-6/22/01	<u>Est Hrly/\$419</u>
Hovest, Christina	12 hrs @\$34.90	9/5/00-6/22/01	<u>Est Hrly/\$419</u>
Hutton, Lisa	12 hrs @\$34.90	9/5/00-6/22/01	<u>Est Hrly/\$419</u>
Johnson, Sue	12 hrs @\$34.90	9/5/00-6/22/01	<u>Est Hrly/\$419</u>
Keller, Joyce	12 hrs @\$34.90	9/5/00-6/22/01	<u>Est Hrly/\$419</u>
King, Keri	12 hrs @\$34.90	9/5/00-6/22/01	<u>Est Hrly/\$419</u>
Korshak, Andrea	12 hrs @\$34.90	9/5/00-6/22/01	<u>Est Hrly/\$419</u>
Lemmon, Melanie	12 hrs @\$34.90	9/5/00-6/22/01	<u>Est Hrly/\$419</u>
McCraw, Renee	12 hrs @\$34.90	9/5/00-6/22/01	<u>Est Hrly/\$419</u>
Moore, LaShawn	12 hrs @\$34.90	9/5/00-6/22/01	<u>Est Hrly/\$419</u>
Plasencia, Rachel	12 hrs @\$34.90	9/5/00-6/22/01	<u>Est Hrly/\$419</u>
Sanschagrin, Marc	12 hrs @\$34.90	9/5/00-6/22/01	<u>Est Hrly/\$419</u>
Spondike, Jessica	12 hrs @\$34.90	9/5/00-6/22/01	<u>Est Hrly/\$419</u>
Suomu, Susan	12 hrs @\$34.90	9/5/00-6/22/01	<u>Est Hrly/\$419</u>
Talbott, Deborah	12 hrs @\$34.90	9/5/00-6/22/01	<u>Est Hrly/\$419</u>
Taslimi, Laila	12 hrs @\$34.90	9/5/00-6/22/01	<u>Est Hrly/\$419</u>
Ullman, Karrie	12 hrs @\$34.90	9/5/00-6/22/01	<u>Est Hrly/\$419</u>
Wetmore, Elayne	12 hrs @\$34.90	9/5/00-6/22/01	<u>Est Hrly/\$419</u>
		TOTAL ESTABLISHED HOURLY	\$9,218

Comment: Curricular work
03-Title 1 (formerly Chapter 1)

MUIR

Gitter, Randall	380 hrs @\$34.90	9/5/00-6/22/01	Est Hrly/\$13,262
Nitti, Anna	1140 hrs @\$34.90	9/5/00-6/22/01	Est Hrly/\$39,786
		TOTAL ESTABLISHED HOURLY	\$53,048

Comment: Miller Unruh Reading Teacher
01-Miller Unruh

OLYMPIC

Thobe, Christie	180 hrs @\$45.94	8/31/00-6/23/01	Own Hrly/\$8269
		TOTAL OWN HOURLY	\$8,269

Comment: Additional 6th period
01-Independent Studies

PT DUME

Armfield, Gina	8 hrs @\$34.90	1/1/00-3/31/00	Est Hrly/\$279
		TOTAL ESTABLISHED HOURLY	\$279

Comment: Staff Development Training
03-Ed.Tech Staff Devlp 4-8

SAMOH

Edens, Meredith	12 days @\$363.59	7/1/00-8/31/00	Own Daily/\$4363
		TOTAL OWN DAILY	\$4,363

Comment: Special Education Registration
03-SE:Resource Specialists

STUDENT SERVICES

Albright, Betsy	12 hrs @\$34.90	11/1/98-11/30/98	Est Hrly/\$419
		TOTAL ESTABLISHED HOURLY	\$419

Comment: Vision & Hearing Testing

Oatway, Bruce	As needed @\$34.90/hr	10/1/00-6/22/01	Est Hrly/ - - -
		TOTAL ESTABLISHED HOURLY	- - -

Comment: Home Instruction
01/03-Home Instruction Reg Ed and Special Ed

WEBSTER

Hines, Diane	300 hrs @\$34.90	9/18/00-6/31/01	Est Hrly/\$10,470
		TOTAL ESTABLISHED HOURLY	\$10,470

Comment: Teaching art enrichment to K-5 students at Webster
03-Classroom Instruction K-5

Stevens, Lori	8 hrs @\$34.90	1/1/00-6/30/00	Est Hrly/\$279
		TOTAL ESTABLISHED HOURLY	\$279

Comment: Staff Development Training
03-Ed.Tech Staff Devlp 4-8

Cook, Kelly	34 hrs @\$34.90	10/1/00-6/30/01	Est Hrly/\$1187
Glansberg, Kim	34 hrs @\$34.90	10/1/00-6/30/01	Est Hrly/\$1187
Stevens, Lori	34 hrs @\$34.90	10/1/00-6/30/01	Est Hrly/\$1187
Winokur, Victoria	34 hrs @\$34.90	10/1/00-6/30/01	Est Hrly/\$1187
		TOTAL ESTABLISHED HOURLY	\$4,748

Comment: Supervise homework club after school
01-Tech/Inst Extend 2hr Media/Lib

TOTAL ESTABLISHED HOURLY, OWN HOURLY, OWN DAILY, AND STIPENDS = \$372,672

SUBSTITUTE TEACHERS

<u>REGULAR DAY-TO-DAY</u> (Daily Rate @\$105)	<u>EFFECTIVE</u>
Berliner, Amanda	10/4/00
Bon, Nancy	9/27/00
Costalupes, Kim	9/1/00
Drutz, Paula	10/4/00
Mackey, Tamara	10/4/00
Pettey, Madeleine	10/4/00
Simon, Nancy	10/2/00

LONG-TERM SUBSTITUTES

(Daily @\$160)	
Costalupes, Kim	9/1/00
Evensen, Thor	9/1/00
Hamer, John	9/1/00
Jones, Jeff	9/1/00
Sender, Ila	9/1/00

ADULT EDUCATION

Russell, Sandra	9/21/00-6/30/01
-----------------	-----------------

CHANGE IN ASSIGNMENT

Name/Assignment <u>Location</u>	<u>Effective</u>
Cary, John Malibu HS/Science From: 60% To: 80%	9/14/00-6/22/01
Crawford, Joan Lincoln/Math 6 From: 80% To: 90%	9/18/00-6/22/01
Crawford, Joan Lincoln/Math 6 From: 90% To: 100%	9/18/00-6/22/01
Cueva, Claudia CDS From: 75% Teacher To: 100% Lead Teacher	9/1/00 (15% lead teacher increment)
Ferres, Kristin Adams From: RSP Teacher To: SDC Teacher	9/5/00
Kilpatrick, Genevieve ADAMS From: SDC Teacher To: RSP Teacher	9/5/00

PROBATIONARY CONTRACTS

<u>Name/Assignment</u> <u>Location</u>	<u>Not to</u> <u>Exceed</u>	<u>Effective</u>
Costalupes, Kim Malibu/MS RSP	100%	8/31/00-6/22/01
Perez, Silvia CDS	50% [replacing C. Yesenia]	9/1/00

TEMPORARY CONTRACTS

<u>Name/Assignment</u> <u>Location</u>	<u>Not to</u> <u>Exceed</u>	<u>Effective</u>
Conway, Kenyatta CDS	50% [replacing M. Larkin]	10/05/00
Sachs, Edward Adams	40%	9/20/00-6/22/01

LEAVES OF ABSENCE (with pay)

<u>Name/Location</u>	<u>Effective</u>
Beeman-Solano, Amy SAMOHI	8/31/00-10/02/00 [maternity]
Walker, Sonya SAMOHI	8/31/00-9/25/00 [maternity]

LEAVES OF ABSENCE (without pay)

<u>Name/Location</u>	<u>Effective</u>
Beeman-Solano, Amy SAMOHI	10/03/00-10/30/00 [child care]
Oyman, Deniz Edison	9/1/00-6/23/01 [child care]
Walker, Sonya SAMOHI	9/26/00-1/26/01 [child care]

RESCINDING OF LEAVE OF ABSENCE

<u>Name/Location</u>	<u>Effective</u>
Berman, Jody SAMOHI	8/31/00

(Rescinding leave of absence approved on 5/04/00 Board Agenda)

RESIGNATIONS

<u>Name/Location</u>	<u>Effective</u>
Orenstein, Steven Samohi	9/29/00

TERMINATIONS

<u>Name/Location</u>	<u>Effective</u>
Landgraf, Heidi CDS	8/30/00
Larkin, Melinda CDS	6/30/00
Marciel, Lissette CDS	6/30/00

MOTION MADE BY: Ms. Brownley
SECONDED BY: Mr. Pratt

STUDENT ADVISORY VOTE: Aye
AYES: (6) Ms. Quiñones out of the room
NOES: None (0)

TO: BOARD OF EDUCATION

ACTION
10/19/00

FROM: SUPERINTENDENT/JOSEPH N. QUARLES/RICK BAGLEY

RE: SPECIAL SERVICES EMPLOYEES

RECOMMENDATION NO. A.15

It is recommended that the following Special Services Employee contracts be approved in accordance with District policies and salary schedules and be assigned pursuant to BP 4102. Funding for the positions listed are included in the 2000/01 budget.

ELECTIONS

<u>Name/Location</u>	<u>Not to Exceed</u>	<u>Effective</u>	<u>Rate</u>
Demuth, James E.	\$65,000	9/25/00-9/25/01	<u>\$5416.66/mo</u>
Facilities Management, Construction Manager, assisting with the management of the Malibu Schools' projects.			
Funding for this contract is provided for from the District Administration component of the Proposition X/State Facility Budget.			

FUNDING: 83-299000-40085000-9890-100%-District Adm

Note: Correction in rate approved on 09/21/00 Board Agenda

Ferrell, Peggy Sue	\$10,000	9/5/00-6/22/01	\$34.90/hr
Rogers Elementary, Science Teacher			
FUNDING: 03-113000-50094600-0698-100%-P.T.A. Reimbursements			

MOTION MADE BY: Ms. Brownley
SECONDED BY: Mr. Pratt

STUDENT ADVISORY VOTE: Aye
AYES: (6) Ms. Quiñones out of the room
NOES: None (0)

TO: BOARD OF EDUCATION

ACTION
10/19/00

FROM: SUPERINTENDENT / JOSEPH N. QUARLES

RE: REAPPOINTMENT OF PERSONNEL COMMISSIONER CELIA CARROLL

RECOMMENDATION NO. A.16

It is recommended that Celia Carroll be reappointed to the Personnel Commission for a three year term commencing December 1, 2000 and ending November 30, 2003, and that this recommendation be submitted to Ms. Delaine Eastin, State Superintendent of Public Instruction for formal appointment.

COMMENT: Commissioner Carroll, under provisions of Education Code 4522, "Qualifications for Membership on Personnel Commission," is a well qualified Commissioner, in that she has amply met the requirements in the Education Code to be reappointed to the Personnel Commission. These requirements are: that she is a known adherent to the principle of the merit system which she has clearly demonstrated through meeting attendance and actions which support the merit system and its operation.

Ms. Carroll was appointed to the Personnel Commission in December, 1997 and has faithfully served the District in this capacity since her initial appointment.

Ms. Carroll knows the District well, having volunteered her services over the years in a number of different roles. She has demonstrated by her attendance at meetings and her participation in the functions of the Personnel Commission that she is a known adherent to the merit principle and therefore meets all requirements for reappointment.

Discussions have been held with SEIU, Local 660 regarding Ms. Carroll's reappointment. They concur that she has served well and support her reappointment.

MOTION MADE BY: Ms. Brownley
SECONDED BY: Mr. Pratt

STUDENT ADVISORY VOTE: Aye
AYES: (6) Ms. Quiñones out of the room
NOES: None (0)

TO: BOARD OF EDUCATION
FROM: SUPERINTENDENT/DORI BURNS
RE: CLASSIFIED PERSONNEL - MERIT

ACTION
10-19-00

RECOMMENDATION NO. A.17

It is recommended that the following appointments for Classified Personnel (merit system) be approved and/or ratified. All personnel will be properly elected in accordance with District policies and salary schedule.

ELECTIONS

BEAVER, GUADALUPE	INST ASST - CLASSROOM 2.4 HRS/SY PT.DUME RANGE: 18 STEP: 01	09-05-00
BELT, CORY	INST ASST - PHYSICAL ED 5.0 HRS/SY ROOSEVELT RANGE: 20 STEP: 01	09-25-00
GALINDO, ARELIS	CHILDREN CENTER ASST 3.0 HRS/SY MCKINLEY RANGE: 18 STEP: 01	09-25-00
GARY, BARBARA	INST ASST - CLASSROOM 2.0 HRS/SY GRANT RANGE: 18 STEP: 01	09-27-00
KUYAMA, KEIKO	INST ASST - CLASSROOM 3.0 HRS/SY ROOSEVELT RANGE: 18 STEP: 01	10-02-00
LANCASTER, KELLY	CAFETERIA WORKER I 3.0 HRS/SY MALIBU RANGE: 11 STEP: 01	09-18-00
MCGRATH, KATHLEEN	OFFICE ASSISTANT II 8.0 HRS/10 ADAMS RANGE: 22 STEP: 01	10-02-00

INVOLUNTARY TRANSFER

GOODLOE, TONYA	CHILDREN CENTER ASST 3.5 HRS/SY ADAMS FR: 3.5/SY LINCOLN	09-01-00
ROBINSON, JOY	CHILDREN CENTER ASST 3.5 HRS/SY GRANT FR: 3.5/SY ROOSEVELT	09-01-00

VOLUNTARY DOMOTION IN LIEU OF LAYOFF

RAMOS, RITA	INST ASST - CLASSROOM 3.0 HRS/SY MCKINLEY FR: INST ASST - BILINGUAL	09-13-00
----------------	---	----------

INCREASE IN ASSIGNMENT

CONRAD, WEI-JIN	INST ASST - CLASSROOM 4.0 HRS/SY WEBSTER FR: 2.0 HRS	09-18-00
--------------------	--	----------

CRUZ, TERESITA	INST ASST - BILINGUAL 3.5 HRS/SY ROGERS FR: 3.0 HRS/SY	09-11-00
-------------------	--	----------

ESCALERA, ROSALIE	INST ASST - BILINGUAL 5.0 HRS/SY EDISON FR: 3.0 HRS/SY	09-01-00
----------------------	--	----------

GIRION, EVANGELINA	BUS DRIVER LIGHT 7.5 HRS/10 TRANSPORTATION FR: 7.25 HRS/10	09-11-00
-----------------------	--	----------

IBA, CATHERINE	INST ASST - CLASSROOM 5.0 HRS/SY WEBSTER FR: 2.0 HRS/SY	09-13-00
-------------------	---	----------

WHITTEMORE, WINSOME	INST ASST - CLASSROOM 3.5 HRS/SY WEBSTER FR: 3.0 HRS/SY	09-05-00
------------------------	---	----------

WILLIAMS, ROBERT	INST ASST - SPECIAL ED 8.0 HRS/SY OLYMPIC FR: 4.0 HRS/SY	09-20-00
---------------------	--	----------

MEDICAL LEAVE OF ABSENCE

HERNANDEZ, PATRICIA	INST ASST - SPECIAL ED ADAMS	08-24-00 10-01-00
------------------------	---------------------------------	----------------------

UNPAID LEAVE OF ABSENCE

CARTER, SANDRA	INST ASST - CLASSROOM PT.DUME	10-01-00 09-01-01
-------------------	----------------------------------	----------------------

WORKING OUT OF CLASS

LANCASTER, KELLY	CAFETERIA WORKER II 4.0 HRS/SY PT. DUME FR: CAFETERIA WORKER I	09-18-00 06-30-01
---------------------	--	----------------------

TEMP/ADDITIONAL

CRAWFORD, CYNTHIA	LIBRARY ASSISTANT I ADAMS	09-05-00 06-22-01
----------------------	------------------------------	----------------------

CRAWFORD, CYNTHIA	LIBRARY ASSISTANT I ADAMS	09-13-00 06-22-01
----------------------	------------------------------	----------------------

GOULET, DARIN	OFFICE ASSISTANT II LINCOLN	09-05-00 06-22-01
MENCOS, CARMEN	INST ASST - CLASSROOM MCKINLEY	09-05-00 06-22-01
NYDEN, DIANE	OFFICE ASSISTANT II LINCOLN	06-28-00 09-01-00
SUBSTITUTE		
BARRERAS-GRACIANO, LAURA	CHILDREN CENTER ASST CDS	09-05-00 06-22-01
CAPITANO, CAROL	CHILDREN CENTER ASST SAPID	09-01-00 06-30-01
ERAZO, SADY	CAFETERIA WORKER I FOOD SERVICES	09-25-00 06-30-01
GODINEZ, LORENA	CHILDREN CENTER ASST SAPID	09-01-00 06-30-01
GRAY, BRIAN	INST ASST - PHYSICAL ED PERSONNEL COMMISSION	09-27-00 06-30-01
JONES, CECELIA	CHILDREN CENTER ASST CDS	09-05-00 06-22-01
KAAN, KAREN	CHILDREN CENTER ASST CDS	09-05-00 06-22-01
KIRBY, CAROLINE	CHILDREN CENTER ASST CDS	09-01-00 06-22-01
LAIRD, ROSEMARY	OFFICE ASSISTANT II PERSONNEL COMMISSION	09-01-00 06-30-01
LANCASTER, KELLY	CAFETERIA WORKER I FOOD SERVICES	09-05-00 09-17-00
MENCOS, CARMEN	CHILDREN CENTER ASST CDS	09-05-00 06-22-01
PETERSON, AIMEE	CHILDREN CENTER ASST CDS	09-05-00 06-22-01
SAAD, CAROLIN	INST ASST - SPECIAL ED SPECIAL ED	09-01-00 06-22-01
SHEARING, KRISTA	CHILDREN CENTER ASST CDS	09-05-00 06-22-01
VOSMIKOVA, BARBARA	CHILDREN CENTER ASST CDS	09-18-00 06-22-01

SEPARATION

BROOKS, SHARON	INST ASST - SPECIAL ED FRANKLIN	06-23-00
KAZVIN, LEYLA	CHILDREN CENTER ASST CDS	07-31-00
PRICE, DANIEL	INST ASST - SPECIAL ED SAMOHI	10-01-00
YADEGARI, SHOLEH	CHILDREN CENTER ASST ADAMS	08-31-00

ABOLISH POSITION

VACANT	INST ASST - SPECIAL ED SAMOHI	09-21-00
VACANT	INST ASST - SPECIAL ED SAMOHI	09-21-00

MOTION MADE BY: Ms. Brownley
SECONDED BY: Mr. Pratt

STUDENT ADVISORY VOTE: Aye
AYES: (6) Ms. Quiñones out of the room
NOES: None (0)

TO: BOARD OF EDUCATION

ACTION
10-19-00

FROM: SUPERINTENDENT/DORI BURNS

RE: CLASSIFIED PERSONNEL - NON-MERIT

RECOMMENDATION NO. A.18

It is recommended that the following be approved and/or ratified for Classified Personnel (Non-Merit). All personnel assigned will be properly elected on a temporary basis to be used as needed in accordance with District policies and salary scheduled.

STUDENT HELPER-WORKABILITY

WOFFORD, MEGHAN	WORKABILITY	08-01-00 - 06-30-02
-----------------	-------------	---------------------

NOON AIDE

BELT, CORY	ROOSEVELT	09-25-00 - 06-22-01
DEARN, TIMOTHY	ROOSEVELT	09-01-00 - 06-22-01
JOHNSON, ERIC	ROOSEVELT	09-11-00 - 06-22-01
JONES, CAROLYN	ROGERS	09-05-00 - 06-22-01
KAHALEUAHI, JOAN	LINCOLN	09-05-00 - 06-22-01
MILLS, EBONY	MCKINLEY	09-09-00 - 06-22-01
SMITH, DUNELL	LINCOLN	09-05-00 - 06-22-01

INSTRUCTIONAL SPECIALIST

MILLS, EBONY	MCKINLEY	09-09-00 - 06-24-01
--------------	----------	---------------------

COACHING ASSISTANT

GEE, KRISTINA	SAMOH	08-21-00 - 11-21-00
GRAY, CARLOS	MALIBU	09-08-00 - 06-22-01
SATO, LIANE	SAMOH	09-15-00 - 11-30-00

CHILD CARE ASSISTANT

BARBA, MARIA	CDS	09-01-00 - 06-22-01
CAMPOS, MARIA	CDS	09-01-00 - 06-22-01
CASTILLO, JOSEFINA	CDS	09-01-00 - 06-22-01
DIAZ, MARIA	CDS	09-01-00 - 06-22-01
GUTIERREZ, SARAH	CDS	09-01-00 - 06-22-01
LLAMS, LETICIA	CDS	09-01-00 - 06-22-01
MACHUCA, ANTONIA	CDS	09-01-00 - 06-22-01
MUNOZ, ANTONIETA	CDS	09-01-00 - 06-22-01
PEREZ, MARIA	CDS	09-01-00 - 06-22-01
SAENZ, ALICIA	CDS	09-01-00 - 06-22-01
VILLA, AURORA	CDS	09-01-00 - 06-22-01
ZALDIVAR, GUADALUPE	CDS	09-01-00 - 06-22-01

MOTION MADE BY: Ms. Brownley

SECONDED BY: Mr. Pratt

STUDENT ADVISORY VOTE: Aye

AYES: (6) Ms. Quiñones out of the room

NOES: None (0)



MAJOR ITEMS

TO: BOARD OF EDUCATION

PUBLIC HEARING

10/19/00

FROM: SUPERINTENDENT / JOSEPH N. QUARLES

RE: PUBLIC HEARING - CONTINUED

SANTA MONICA-MALIBU CLASSROOM TEACHER'S ASSOCIATION
(SMMCTA) AND THE SANTA MONICA-MALIBU UNIFIED SCHOOL
DISTRICT'S INITIAL PROPOSALS ON NEGOTIATIONS FOR SCHOOL
YEAR 2000-2001

RECOMMENDATION NO. A.19

It is recommended that the Board of Education continue the Public Hearing, begun on October 5, 2000, to take public input regarding the initial collective bargaining proposals related to the 2000-01 School Year negotiations of the Santa Monica-Malibu Classroom Teachers Association (SMMCTA) and the Santa Monica-Malibu Unified School District.

COMMENT: Copies of the Initial Bargaining Proposals are attached to this item and are available for review in the Office of the Assistant Superintendent of Human Resources. Copies will also be available at the Board meeting.

	<u>OPEN CONTINUE</u>	<u>CLOSE</u>
	<u>PUBLIC HEARING</u>	<u>PUBLIC HEARING</u>
MOTION MADE BY:	Ms. Quiñones	Ms. Quiñones
SECONDED BY:	Ms. Gottfried	Ms. Gottfried
STUDENT ADVISORY VOTE:	Aye	Aye
AYES:	All (7)	All (7)
NOES:	None (0)	None (0)

SANTA MONICA-MALIBU UNIFIED SCHOOL DISTRICT
Office of Human Resources
September 21, 2000

INITIAL BARGAINING PROPOSAL FOR 2000-2001 NEGOTIATIONS
with the
SANTA MONICA-MALIBU CLASSROOM TEACHERS' ASSOCIATION

Article XXXV, Section "A" (page 100) of the current contract stipulates that both the Association and the District may each re-open up to three articles for negotiations. This is in addition to the articles on salary and benefits which are automatically re-opened for negotiations.

SMMCTA submitted to the Board their proposal (dated 7/12/00) which includes six (6) articles for negotiations above and beyond the salary and benefits articles. SMMCTA has indicated further discussion among their Executive Board will take in order to reduce the number of articles to three (3).

The proposal presented by the District is conceptual in nature. Specific modification in contract language will be developed during the negotiations process. The District reserves the right to add to, subtract from, or otherwise modify this initial proposal.

ARTICLE I: Recognition

- A. Exclude "day-to-day" and "long term" substitute teachers from the bargaining unit. (I.A.2.)

ARTICLE VI: Assigned Days and Hours of Work

- A. Define procedures by which time may be created for the purpose of providing additional opportunities for staff development, faculty meetings, grade level/department meetings, etc. (No current language)
- B. Clearly define the term "professional day". (VI.B.1)
- C. Length of Kindergarten Day

ARTICLE XVII: Consultation Procedures

- A. Clearly define the term "restructuring". (XVII.C.1)
- B. Clarify the process for restructuring. (XVII.C.2.c)
- C. Site Governance

ARTICLE XXIII - Salary

ARTICLE XXIV - Additional Compensation

ARTICLE XXV - Health and Welfare Benefits

The District proposes negotiating a fair and equitable increase on the salary schedule, based upon current and anticipated financial conditions.

The District proposes maintaining health and welfare benefits comparable to benefits in prior years.

Contract Proposal

2000-2001

**Santa Monica-Malibu Classroom
Teachers Association**
CTA/NEA

Submitted July 12, 2000

Supporting SMMUSD Teachers

Introduction

This proposal is submitted for purposes of informing the public pursuant to government code section 3547. The Association requests that the Board of Education present this proposal at the next regularly scheduled meeting of the Board of Education.

The District and the Association has scheduled four (4) dates for negotiations: September 22, 28, October 10, and 24. We strongly encourage the members of the Board to participate in those negotiations with us.

Improving SMMUSD Teacher Salaries

As a result of the May 8 CTA *Action Day*, public school districts throughout California have an unprecedented opportunity to address the single most detrimental and undermining issue confronting public education today - low pay for teachers.

As you can see from the attached list of school districts in Southern California, negotiated salary agreements for the 2000-2001 school year are quickly settling in the 10% to 12% range.

Although the SMMUSD has the 7th highest per student revenue among the 47 unified school districts in Los Angeles County, the percentage of budget that the SMMUSD devotes to the teaching program and to teacher salaries ranks among the lowest in the county. Virtually every cell of the SMMUSD Teachers' Salary Schedule compares poorly with other districts in the county. (*The only exception is the salary increment for teachers with thirty (30) or more years of service.*) These low salaries are incompatible with the SMMUSD's high ranking in revenue. In sharp contrast to teacher salaries, the district ranks high in percentage of budget spent on salaries for administrative and non-teaching personnel.

In addition, a majority of school districts in the state has utilized state *Minimum Teacher Salary Incentive* funding to significantly raise entry level teacher salaries. The SMMUSD is among the few districts that have not applied for this funding. We must act now to significantly raise beginning salaries for our teachers.

In order to achieve and maintain a competitive level, the SMMUSD Teachers' Salary Schedule must be improved by a percentage above the increases negotiated in surrounding districts. Fortunately, the funding made available as a result of the May 8 CTA *Action Day* provides us with the opportunity to accomplish this.

Proposals

❖ Article IV Association Rights

- A. Include existing Coordinating Head Nurse collaborative selection process language and include the additional compensation in Article XXIV Additional Compensation.
- B. Association President full school day release time without loss of compensation if requested by the Association.

❖ Article VIII Class Size

- A. Improve special education class size language for SDC, SED, and SDC-IS programs.

❖ Article XI Evaluation Procedures

- A. Develop Peer Assistance and Peer Review (PAR) language for all unit members.
- B. Corrections and modifications of existing contract language.

❖ Article XV Safety and Working Conditions

- A. Revise and move Appendix 5 Guidelines – Shared Use of Space into working conditions.

❖ Article XXIII Salary

- A. Effective July 1, 2000, the Certificated Salary Schedules for unit members and the Miscellaneous Certificated Compensation rates shall be increased by 12%.
- B. Effective July 1, 2000, the Certificated Teachers' Salary Schedule shall be restructured by an amount equal to 4% above the increase in "A" above.
- C. Effective July 1, 2000, the SMMUSD shall fully implement the minimum salary incentive provisions of the state budget act.

TO: BOARD OF EDUCATION ACTION
10/19/00
FROM: SUPERINTENDENT / RICK BAGLEY previously
10/05/00
RE: ADOPTION OF NEW BOARD POLICY BP 4112.2 /
CERTIFICATED PERSONNEL - CERTIFICATION

RECOMMENDATION NO. A.20

It is recommended that the Board approve new BP 4112.2 which relates to the certification of teachers within the District.

RATIONALE:

This policy was received in the recent CSBA packet of updates and is recommended for inclusion in our local Board policies.

This policy clarifies options available to the district when a fully certified teacher is not available, and deletes optional provisions related to mentor teacher program which will sunset in July 2001.

Education Code 44250-44279 contain the minimum requirements for the multiple or single subject teaching credential. To obtain a clear credential, teachers must possess a valid preliminary credential, an equivalent credential or equivalent requirements, and must complete an approved program of beginning teacher induction or an approved district internship program. A fifth-year program after completion of a baccalaureate degree is not needed if the candidate has completed the induction program.

When a fully qualified teacher is not available and a substitute has served for the maximum number of days allowed by law, state law allows districts to assign personnel with emergency permits (Education Code 44300), intern permits (Education Code 44325, 44464), pre-intern certificates (Education Code 44305), or credential waivers (Education Code 44225 (m)). Pursuant to Education Code 44302, added by SB 1309 (Ch. 400, Statutes of 1999), the CTC must regularly notify districts of these various provisions. In addition, AB 471 (Ch. 381, Statutes of 1999) added Education Code 44225.7 requiring the CTC to notify districts, as the supply of interns increases, that state policy directs the assignment of interns to classrooms when available, with decreased reliance on persons serving on emergency permits or credential waivers.

The National Board for Professional Teaching Standards (NBPTS) provides advanced certification to teachers who voluntarily fulfill a rigorous certification process. Pursuant to Education Code 44395-44397, one-time \$10,000 merit awards are available to teachers who have obtained certification from the NBPTS, are employed by school districts or charter schools, and are assigned to teach in California public schools.

MOTION MADE BY: Mr. Pratt
SECONDED BY: Ms. Gottfried

STUDENT ADVISORY VOTE: Aye
AYES: All (7)
NOES: None (0)

Certification

The Superintendent or designee shall ensure that persons employed in positions requiring certification qualifications have the appropriate credential or permit authorizing their employment in such positions.

When fully credentialed individuals are not available, the district may employ persons with emergency permits, intern permits, pre-intern certificates or credential waivers in accordance with law.

The Superintendent will submit a report to the Board of Education twice yearly, once in the fall and once at the end of the Fiscal Year, regarding such employment.

A. National Board for Professional Teaching Standards Certification Incentive Program

The Governing Board encourages district teachers to voluntarily seek additional certification from the National Board for Professional Teaching Standards which demonstrates advanced knowledge and teaching skills.

The Superintendent or designee shall ensure that district teachers and teachers working in charter schools affiliated with the district are informed about the program and can acquire the necessary application and information materials. (Education Code 44395)

Legal Reference:

EDUCATION CODE

- 8360-8370 Qualifications of child care personnel
- 32340-32341 Unlawful issuance of a credential
- 44066 Limitations on certification requirements
- 44200-44405 Teacher credentialing, especially:
 - 44225.6 CTC annual report on credentials, internships and emergency permits
 - 44225.7 Priorities for recruitment when fully prepared teacher not available
- 44227 Teacher education courses for out-of-state applicants
- 44251 Period of credentials
- 44252 Standards and procedures for issuance; proficiency testing of basic skills
 - 44252.5 State basic skills assessment required for certificated personnel
- 44259 Minimum requirements for teaching credential
 - 44259.5 Standards for teachers of all students, including English language learners
 - 44259.8 Alternative means of entering teaching profession; district recommendation for credential
- 44274-44274.5 Out-of-state credentials
 - 44275.3 Employment of teachers with out-of-state credentials
- 44277 Requirements for maintaining valid credentials
- 44278 Credential appeal
- 44300-44301 Emergency permits
 - 44302 CTC notification re district options when fully qualified teacher not available
- 44305-44308 Pre-internship teaching certificates
- 44325-44329 District interns
- 44330-44355 Certificates and credentials
 - 44395-44397 National Board for Professional Teaching Standards certification incentive program
 - 44400-44405 California Mathematics Initiative for Teaching

44830-44929 Employment of certificated persons; requirement of proficiency in basic skills
56060-56063 Substitute teachers in special education

CODE OF REGULATIONS, TITLE 5
80001-80690.1 Commission on Teacher Credentialing

COURT DECISIONS
Association of Mexican-American Educators, et. al. v. State of California and the Commission on
Teacher Credentialing, (1993) 836 F.Supp. 1534

Management Resources:

CTC ADVISORIES
1227.99 CTC Memo #99-9931 Amendments pertaining to emergency permits
CTC memo #94-9414, August 15, 1994

WEB SITES
CDE: <http://www.cde.ca.gov>
CTC: <http://www.ctc.ca.gov>

BOARD GOAL

A. Quality Education for All

BOARD ADOPTED: October 19, 2000
CSBA UPDATED: March, 2000

TO: BOARD OF EDUCATION ACTION
10/19/00
FROM: SUPERINTENDENT / RICK BAGLEY previously
10/05/00
RE: ADOPTION OF REVISED BOARD POLICY BP 6178 /
VOCATIONAL/TECHNICAL (SCHOOL-TO-CAREER) EDUCATION

RECOMMENDATION NO. A.21

It is recommended that the Board approve the attached updated policy, BP 6178, which relates to Vocational/Technical(School-to-Career)Education.

RATIONALE:

BP 6178 is a mandated policy which has been revised to reflect new law, the reauthorized Carl D. Perkins Act, which establishes new requirements for local use of vocational/technical funds and for local vocational/technical education plans.

This policy was recently updated (March, 2000) by CSBA and reflects new laws and other changes that must be reflected in our local policies. It should be noted that this policy will replace in total, BP 6175 which was originally adopted by the Board in 1978 and has not been updated since.

MOTION MADE BY: Ms. Quiñones
SECONDED BY: Ms. Brownley

STUDENT ADVISORY VOTE: out
AYES: All (7)
NOES: None (0)

Vocational Education / Technical Education (School-to-Career)

The Governing Board desires to provide a quality, expanded and modernized vocational and technical education program which provides services and activities that are of sufficient size, scope and quality to be effective. The goal of the program is to provide for an integration of academic and vocational components through a coherent sequence of courses to ensure learning in all subjects. The program shall also provide curriculum and program strategies reflecting workplace needs.

The district's program shall provide linkages between secondary and postsecondary vocational and technical education, including the implementation of tech-prep programs. Students shall also be given a strong experience and understanding of all aspects of an industry.

The Superintendent or designee shall expand the use of technology in the district's vocational/technical education program. He/she shall also provide professional development programs to teachers, counselors and administrators designed to provide effective practices to improve parental and community involvement and to ensure that teachers stay current with an industry.

The district's program shall provide equal access to students who are members of special populations. Students who are members of special populations shall not be unlawfully discriminated against on the basis of their status as a member of a special population. (20 USC 2354)

A. Expenditures of Supplemental Funding

Every three years, the Board shall compare the district's existing vocational/technical education curriculum, course content and course sequence with model state curriculum standards. (Education Code 51226, 52376)

The Superintendent or designee shall establish procedures for the systematic review of district vocational/technical education classes to determine the degree to which each class may offer an alternative means for completing and receiving credit for specific portions of the course of study prescribed by the district for high school graduation. The Superintendent or designee shall present the Board with evidence that enables the Board to ensure that these classes are equivalent in content and rigor to the courses prescribed for graduation. (Education Code 52376)

B. Advisory Committee

The Board shall appoint a vocational / technical education (school-to-career) advisory committee as required by law to develop recommendations on the vocational/technical education program and provide liaison between the district and potential employers. (Education Code 8070)

Legal Reference:

EDUCATION CODE

- 8070 Appointment of vocational education advisory committee
- 48430 Legislative intent; continuation education schools and classes
- 51225.3 Requirements for graduation commencing with 1988-89 school year
- 51226 Model curriculum standards
- 51228 Graduation requirements; minimum standards; required curriculum; pupil demonstration of competence
- 52300-52499.6 Vocational education
- 52980-52982 Pilot projects in applied academic areas & programs
- 54728 Funds allocated pursuant to the School-Based Motivation and Maintenance Program
- 54761 Calculation; base funding; deposit; use

UNITED STATES CODE, TITLE 20

- 2301-2415 Carl D. Perkins Vocational and Technical Act of 1998

CODE OF FEDERAL REGULATIONS, TITLE 34

- 104.1-104.39 Section 504 of the Rehabilitation Act of 1973
- 106.1-106.61 Discrimination on the basis of sex, effectuating Title IX

Management Resources:

WEB SITES

- CDE, Secondary Education, Academic and Career Integration: [http:// www.cde.ca.gov/shsd/aci](http://www.cde.ca.gov/shsd/aci)
- USDE, Office of Vocational and Adult Education: <http://www.ed.gov/offices/OVAE>

BOARD GOAL

- A. Quality Education for All

BOARD UPDATED: October 19, 2000
BOARD APPROVED: March 27, 1978
CSBA UPDATED: March, 2000

ARTICLE 6 - INSTRUCTION

~~6175~~

COMPLETELY REPLACE
w/ UPDATED BP 6178

Section 1 - Elementary and Secondary

E. Curriculum Extensions

3. Vocational Education Policy

The Santa Monica-Malibu Board of Education recognizes the diverse needs, interests, and abilities of boys and girls to be the essential factors in providing options and choices for students in pursuit of their respective career choices. Training students to become gainfully employed in recognized occupations other than those generally considered to be professional and require degrees from institutions of higher learning is the primary purpose of vocational education. Preparation is imparted to enter various occupations in the fields of distributive education, office and business fields, homemaking, trade and industry. Vocational education will supplement and enhance both general and career education for students who are seeking to enter a chosen occupation.

It is the intent of the Board of Education to support and maintain such a program for students matriculating at schools within the Santa Monica-Malibu Unified School District.

Policy adopted: March 27, 1978

TO: BOARD OF EDUCATION

ACTION
10/19/00

FROM: SUPERINTENDENT

RE: ACCEPTANCE OF RESIGNATIONS FROM DISTRICT ADVISORY
COMMITTEES/ DECLARATION OF VACANCIES

RECOMMENDATION NO. A.22

It is recommended that the Board of Education review the attached charts of District Advisory Committee membership and take action as follows:

1. Accept the resignation of those DAC appointees who have requested their names be removed from committee membership;
2. Approve the request of current members who wish to continue;
3. Declare vacancies to be filled, based on acceptance of resignations and current vacancies coming forward; and
4. Approve modifications to membership categories as indicated on the charts (i.e., on Child Care and Development DAC, modify membership category "Washington West" to read Pine Street; remove the membership category "Marine Park").

COMMENT: At its meeting of October 6, 2000, the Board of Education voted to modify and clarify its procedures regarding District Advisory Committee appointments. As part of that process, the Board also voted to approve the following procedure for acceptance of resignations and declaration of vacancies for these committees: committee chairs will forward resignations to the Superintendent's Office to be placed on the Board of Education agenda for acceptance by the Board. Upon accepting the resignations, the Board will declare the positions vacant.

This is a modification of the process previously in place, which delegated authority to the Superintendent to accept Advisory Committee member resignations and to declare the positions vacant.

In the attached charts, resignations are indicated by stikeout, current vacancies by underlining. All other names are current members who have indicated to their chairs that they would like to remain active members for another year.

MOTION MADE BY: Ms. Quiñones

SECONDED BY: Ms. Brownley

STUDENT ADVISORY VOTE: Aye

AYES: (6) Ms. Quiñones out of the room

NOES: None (0)

**CHILD CARE AND DEVELOPMENT ADVISORY COMMITTEE
VACANCIES TO BE FILLED (2000-01)**

10/00

Child Care and Development Advisory Committee (established 1991)

Committee Composition: (27-31)
Up to 19 parents (1 from each school and preschool site)
4-6 Representatives of agencies or community organizations
5-7 At-Large (community/parent)
1 District Staff Member

Current Committee Composition

The following are current members and wish to continue for the next school year. Names crossed out are being submitted to the Board of Education for acceptance. The Board may then declare the positions vacant.

Parents (1 from each school/preschool site)

	Adams PreSchool	
Gleam O. Davis	Marine Park CDC (5/14/98)	<i>remove category</i>
	Cabrillo	<i>Ms. Davis reapplying</i>
	Edison	
	Franklin	
Nancy Simon	Grant (10/23/97)	
	Lincoln CDC	
Karen Paris	McKinley (10/22/92)	
Kim Karie	Muir	
	Adams Teen Center	
	Lincoln Teen Center	
Vivian Chan-Taras	Pt. Dume	
Florence Benjamin	Rogers (10/24/96)	
Leslie Lambert	Rogers (10/24/96)	
Ann del Valle Roswell	Roosevelt (5/14/98)	
Patricia Nomura Feinberg	SMASH	
Anne Rosten	Olympic (10/23/97)	
	Washington West CDC	<i>change name to Pine Street</i>

Community Organizations & Agency Representatives (4-6)

Linda Gordon	PICSI Liaison (1/21/92)
Julie Taren	City of Santa Monica (4/11/96)
Kathleen Sheldon	COSW (3/11/93)

At-Large (parent/community) (5-7)

Irene Zivi	Community (1/21/92)
Michael Dubin	Community (10/21/99)??roosevelt?
	Community
David Cole	Parent (10/23/97) Samohi
Kay Gabbard	Community, Malibu (11/5/98)
Kerry Kilar	Community (11/5/98)

PTA Council Liaison

Patti Oblath

District Staff Liaison

Nancy Cohen Director, CDS

Board Liaisons

Dorothy Chapman/Julia Brownley (1/00)

**DISTRICT ADVISORY COMMITTEE/FINE ARTS
VACANCIES TO BE FILLED (2000/01)**

10/00

Current Committee Composition

The following are current members and wish to continue for the next school year. Names crossed out are being submitted to the Board of Education for acceptance. The Board may then declare the positions vacant.

GENERAL:

Board Liaison(s)

Brenda Gottfried (1/00)

Administrative Liaison(s)

Pat Henderson (5/8/97)

MUSICAL ARTS

2 High School Students

~~Marilyn Hall (Samohi) (6/29/00)~~ re-applying

2 Middle School Students

2 Elementary School Music Teachers

Sue Edwards (5/8/97)

2 Middle School Music Teachers

2 High School Music Teachers

Terry Sakow (5/8/97)

6 Parents of Elementary School Students

~~Donna Stanton (5/8/97)~~ re-applying

Jose Escarce (10/21/99)

4 Parents of Middle School Students

David Avshalomov (5/8/97)

Donna Block (11/5/98)

4 Parents of High School Student

~~Jean Gebman (5/14/98)~~ re-applying

Peter Davison (11/5/98)

Jean Sedillos (11/5/98)

Dianne Goodwin (10/21/99)

6 Community Members

Sheila Wells (5/8/97)

~~Susan Justin (5/14/98)~~ re-applying

Iona Blackwell-Tompkins (11/5/98)

Zina Josephs (11/5/98)

Anne Bunney (10/21/99)

**DISTRICT ADVISORY COMMITTEE/FINE ARTS
VACANCIES TO BE FILLED (2000/01)**

10/00

Current composition (continued)

VISUAL ARTS

2 High School Students

2 Middle School Students

2 Elementary Teachers

Marion Joy (Franklin) (5/8/97)

2 Middle School Teachers

Katherine Pomatti (11/5/98)

2 High School Teachers

Marsha Johnson (5/8/97)
Anna Lovejoy (11/5/98)

6 Parents of Elementary School Students

~~**Amy Nieman (Roos) 10/23/97**~~
Susan Petz (McK) 10/23/97
Sheila Forsander (11/5/98)

4 Parents of Middle School Students

~~**Gretchen Goetz (11/5/98)**~~

4 Parents of High School Students

Diane Hines (10/23/97)

6 Community Members

Bruria Finkel (10/23/97)

**DISTRICT ADVISORY COMMITTEE/FINE ARTS
VACANCIES TO BE FILLED (2000/01)**

10/00

Current composition (continued)

DANCE AND THE DRAMATIC ARTS

2	High School Students	_____

2	Middle School Students	_____

2	Elementary Teachers	Zoe Langley (5/99)

2	Middle School Teachers	_____

2	High School Teachers	Brenda Armstrong (11/5/98)

6	Parents of Elementary School Students	Amy Santo (Rogers) (10/23/97)

4	Parents of Middle School Students	Reenie Matthes (JAMS) (10/23/97)

4	Parents of High School Students	Iris Pell (11/5/98)

6	Community Members	Cecilia Soriano (5/8/97)
		Nancy Linchan Charles (11/5/98)
		Jeanne (Gigi) de Marrais (11/5/98)
		Jennifer Douglas (11/5/98)

INSTRUCTIONAL TECHNOLOGY COMMITTEE VACANCIES TO BE FILLED (2000-01)

10/00

Instructional Technology Committee (established 9/24/92)

Members nominated from District schools, departments or offices and appointed by the Board as follows: (39-48)

- 1 each Elementary Schools
- 2 each Middle Schools
- 6 Samohi/ROP
- 2 Malibu High School
- 1 Olympic
- 1 each Special Ed/Ed Services
- 3 Classified Employees
- 2 Middle School Students
- 4 High School Students

Up to 10 Community members at-large, including business representatives, parents, or other interested persons appointed by the Board

Current Committee Composition (by constituency)

The following are current members and wish to continue for the next school year. Names crossed out are being submitted to the Board of Education for acceptance. The Board may then declare the positions vacant.

Elementary Schools (1/ea)

Alternative ~~Kenneth Harris~~ (9/24/92)
Cabrillo ~~Barry Yates~~ (11/11/93)
Jennifer Douglas (10/23/97)
Edison Santiago Martinez (10/23/97)
Franklin Steven Strate (10/23/97)
Grant Stephanie Sherry (5/9/99)
McKinley ~~Mildred Marsh-Browne~~ (5/9/99)
Muir Mary Hubbell (4/11/96)
Pt. Dume Margo Dunn (5/14/98)
Rogers Nicholas Kim (9/24/92)
Roxanna Patton (10/23/97)
Roosevelt
Webster Tony Shafer (9/24/92)

Middle Schools (2/ea)

Adams
Eud Jacobs (4/11/96)
Lincoln Marie Claire Kelin (10/23/97)
Sue Moore (10/23/97)

Malibu Park Bill Thacker (10/24/96)

Samohi/ROP (6)

Greg Runyon (4/11/96) Ann McKechnie (11/5/98)
Rebel Harrison (10/24/96) Celia Marek (5/9/99)
Carol Drake Kim (10/23/97) Bryan Sanders (10/21/99)

Olympic (1)

~~Christie Thobe~~ (5/14/98)

Malibu High School (2)

Joseph DiMercurio (10/13/94)

Classified Employees (3)

Will Carey (9/92)
~~Todd Burdett~~ (10/21/99)
Eric Paul (10/21/99)

Special Ed/Ed Services (1/ea)

~~Amanda Cesar~~ (Special Ed) (11/5/98)
Helen Siporin (Special Ed) (6/29/00)

Middle School Students (2)

High School Students (4)

Daniel Goodwin (5/14/98)
Hal Bergen (5/9/99)
Nicholas Phillips (5/9/99)

Community At-Large (Up to 10)

Richard Lapkin (11/5/98)
Keith Kurtz (PEN) (9/24/92)
Kevin McKeown (PEN) (9/24/92)
Diane Goodwin (9/24/92)
Rebecca Mansdorf (4/11/96)
~~Tonya McArthur Gross~~ (10/23/97) parent cabr
Harvey Schwartz (10/23/97) parent, edison
Terry Schillar (11/5/98)
Shane McCloud (10/21/99)

District Staff

Peter Zrinzo - Staff Liaison (1997)

Board Liaison(s)

Todd Hess (2000)

**DISTRICT ADVISORY COMMITTEE ON SPECIAL EDUCATION
VACANCIES TO BE FILLED (2000-01)**

10//00

District Advisory Committee on Special Education (established 6/9/94)

Committee Composition (revised 3/25/96)

- 18 Parents of children with various disabilities (1 parent from each school, including McKinley, Lincoln and Malibu preschool programs)
- 3 Parents of general education students:
1/ea elementary, middle, high school
- 1 Parent of a child with special needs who is attending a nonpublic school
- 2 Student members "at-large"
- 2-4 Students with disabilities or special education placement
- 4 Members from the general/business community
- 1 General education teacher
- 1 Special education teacher or program facilitator
- 1 Instructional Assistant
- 1 District Administrator
- 2 District Support Staff

Current Committee Composition

The following are current members and wish to continue for the next school year. Names crossed out are being submitted to the Board of Education for acceptance. The Board may then declare the positions vacant.

Parents of children with various disabilities (total 18)

Washington West preschool	_____
McKinley preschool	_____
Malibu preschool	_____
Alternative	_____
Cabrillo	David Kramer (5/14/98) <i>Reapplying</i>
Edison	Emeritus Magallanes (3/00)
Franklin	Richard Milanesi (11/5/98)
Grant	Carol Follette (11/5/98) <i>Reapplying</i>
McKinley	Mazal Nissim-Gralneek (3/00)
Muir	Barbara Matthews (10/23/
Pt. Dume	_____
Rogers	_____
Roosevelt	Virginia Mastroianni-Brode (3/00)
Webster	_____
Adams	Allan Paul Shatkin (3/00)
Lincoln	Tricia Crane (3/00) <i>Reapplying</i>
Malibu HS	Kathy Cook (5/14/98)
Olympic	_____
Samohi	Andrea Tobey (3/00)
Transition Program	_____

- 1 Parent of elementary general education student
- 1 Parent of middle school general education student
- 1 Parent of high school general education student
- 1 Parent of child w/special needs who is attending a non-public school
- 2 Student Members "at-large"

Mona Fortenberry (3/00)

- 2-4 Students with disabilities of special education placement

James Cook (5/6/99)

- 4 Members from general/business community

Karen Paris (3/00)
~~Claudia Landis (3/00)~~ *Reapplying*
~~John Feiz (11/4/99)~~
Patricia Hoffman (11/4/99)

- 1 Teacher, general education
- 1 Special Education teacher or program facilitator
- 1 Instructional Assistant
- 2 District Support Staff

Lakin Crane (3/00)

Lora Morn (11/5/98)

District Administrator (Staff Liaison)

Rose Ecker/Laurel Schmidt

Board Liaison

Tom Pratt

SPORTS AND PHYSICAL EDUCATION ADVISORY COMMITTEE

9/00

Formerly the Athletic Advisory Committee (renamed 2/26/98)**VACANCIES TO BE FILLED (2000-01)****Athletic Advisory Committee (established 6/9/94)**

Committee Composition: (30-36)

District Staff

- 1 High School Administrator
- 1 Athletic Director
- 2 Athletic Coaches (1/ea men's/women's)

Teachers

- 3 PE Teachers (1/ea middle school)
- 2-4 Teachers (disciplines other than PE)
- 2 Elementary Teachers

Parents

- 2 ea High Schools
- 2 ea Middle Schools
- 2 Elementary School Level
- 2-3 Parents with No Children in Athletics

Community

- 2-3 Community Members

Students

- 4-6

Current Committee Composition

The following are current members and wish to continue for the next school year. Names crossed out are being submitted to the Board of Education for acceptance. The Board may then declare the positions vacant.

District Staff

- 1 High School Administrator
- 1 Athletic Director (Samohi)
(Malibu High)
- 1 Women's Athletic Coach
- 1 Men's Athletic Coach

Cecilia Duenas
Mike Griswold (10/12/95)
Brian Banducci
Mark Black (10/24/96)Teachers

- 3 PE Teachers (1/ea middle school)
 - Lincoln
 - John Adams
 - Malibu Park

- 2-4 Teachers (disciplines other than PE)

- 2 Elementary Teachers

Parents

- 2 Samohi
- 2 Malibu High

William Lockton (11/4/99)
Barbara Kagan (3/00)
Steve Kauffman (3/00)
John Mills (10/21/99)

Middle Schools (2/ea)

- 2 Lincoln

Robert Ettenger (11/5/98)
Graham Wong (Lincoln) (10/13/94)

- 2 John Adams

Alan Glick (Adams) (10/13/94)

- 2 Malibu Park

- 2 SMASH

Frederick Tucker (3/00)

- 2 Elementary School Level

Priscilla MacRae (3/00)
Renny Smith (10/21/99)

- 2-3 Parents with No Children in Athletics

Stephen Heineman (3/00)Community (2-3)
Phillip Brock (10/24/96)
Neil Carrey (11/5/98)
Bonnie Parcels (3/00)
Students (4-6)**Benny Townsend (3/00)**Staff LiaisonBoard LiaisonAdministrative Liaison
Chris Corliss (9/97)
Tom Pratt / Dorothy Chapman (2000)
Dr. Joseph Quarles (1/98)

TO: BOARD OF EDUCATION

ACTION
10/19/00

FROM: SUPERINTENDENT

RE: FALL APPOINTMENTS TO DISTRICT ADVISORY COMMITTEES

RECOMMENDATION NO. 23

It is recommended that the Board of Education appoint members to vacancies on District Advisory Committees.

COMMENT: Copies of all applications have been submitted to Board of Education members under separate cover.
Appointments will be made at the meeting.

(Appointments by committee/membership category)

CHILD CARE AND DEVELOPMENT

Amy Dailey	Cabrillo
Nancy McHugh	Roosevelt
Gleam Davis	Community-at-large
Crystal Hope Reed	Community-at-large

Appointments to the Child Care and Advisory Committee were moved by Mrs. Brady, seconded by Mr. Pratt and approved by a vote of Yes (5), No (1), with Ms. Brownley voting "no" and Ms. Quiñones out of the room.

FINE ARTS

Fine Arts - Musical Arts

Susan Justin	parent of elementary school student(s)
Marilyn Hall	community member
Jean Gebman	community member

Fine Arts - Visual Arts

Cathy Warick	middle school teacher
Catherine Hess	parent of elementary school student(s)

Fine Arts - Dance and the Dramatic Arts

Tiffany R. Kokotakis	parent of elementary school student
Maureen Matthes	parent of high school student(s)

Appointments to the Fine Arts Advisory were moved by Ms. Brownley, seconded by Ms. Chapman and approved unanimously by a vote of Yes (7), No (0).

INSTRUCTIONAL TECHNOLOGY

Liz Greenberger	Roosevelt
Anita Circenis	Classified Employees
Larry Roberts	Community-at-large
Sandy Szabo	Community-at-large

Appointments to the Instructional Technology Committee were moved by Ms. Quiñones, seconded by Mrs. Brady and approved unanimously by a vote of Yes (7), No (0).

INTERCULTURAL ADVISORY COUNCIL

Ellen Rennell	Muir
Florence Benjamin	John Adams

It was moved by Mrs. Brady and seconded by Ms. Quiñones and approved unanimously by a vote of Yes (7), No (0) to approve the above appointments to the Intercultural Advisory Council and to bring back the committee charge/composition for review and add an additional membership category for Higher Education.

SPORTS AND PHYSICAL EDUCATION

Michael Sidley	parent with no children in athletics
----------------	--------------------------------------

The appointment to the Sports and Physical Education Committee was moved by Mrs. Brady, seconded by Ms. Quiñones and approved unanimously by a vote of Yes (7), No (0).

SPECIAL EDUCATION

Lora Morn	Alternative
Linda Carr O'Connor	Cabrillo
Claudia Landis	Grant
Karen Aspinall	Rogers
Carol Follette	Lincoln
David Kramer	general / business community
Tricia Crane	general / business community

The appointments to the Special Education Advisory Committee were moved by Ms. Brownley, seconded by Mrs. Brady and unanimously approved by a vote of Yes (7), No (0).

COMMUNITY HEALTH AND SAFETY

Johanna Chase	District Employee
Jamar Schoessow	District Employee
Shelly Kramer	Health Care Professional

The appointments to the Community Health and Safety Committee were moved by Ms. Brownley, seconded by Mrs. Brady and approved by a vote of Yes (6), No (1).

Discussion

-Advisory Committee Charges, including committee composition, will be placed on an upcoming agenda to allow the Board to begin a review of the charge and the committee membership for each advisory committee. The documents will then be referred to the committees for review and feedback to the board.

MOTION MADE BY: Mr. Pratt
SECONDED BY: Ms. Quiñones

STUDENT ADVISORY VOTE: Aye
AYES: All (7)
NOES: None (0)

TO: BOARD OF EDUCATION
FROM: SUPERINTENDENT/ARTHUR L. COHEN
RE: BUDGET ADJUSTMENTS

ACTION
10/19/00

RECOMMENDATION NO. A.24

It is recommended that the Board of Education approve the following adjustments to the 2000-01 Budget:

- [I.A] A decrease in the General Fund - Unrestricted revenue budget in the amount of <\$27,264>;
- [I.B] A decrease in the General Fund - Unrestricted expenditures in the amount of <\$57,476>;
- [I.C] Budget transfers in the General Fund - Unrestricted;
- [II.A] An increase in the General Fund - Restricted revenue budget in the amount of \$1,213,705;
- [II.B] An increase in the General Fund - Restricted expenditures in the amount of \$3,516,051;
- [II.C] Budget transfers in the General Fund - Restricted;
- [III.A] Budget transfers in the Child Development Fund;
- [IV.A] An increase in the Cafeteria Fund revenue budget in the amount of \$81,331; and,
- [IV.B] An increase in the Cafeteria Fund expenditures in the amount of \$55,578,

as detailed below in the Comments Section.

- COMMENTS: I. GENERAL FUND - UNRESTRICTED (FUND 01)
- [A] Revenues - **Decrease** in the amount of <\$27,264> to reflect adjustments, as follows:
 - 1. **Decrease** City of Santa Monica <\$ 32,641>
Physical Activity Specialist
projected funding based on decrease
of 1.25 FTEs
 - 2. **New Revenue Source** - UCLA \$ 5,377
reimbursement of one (1) section
of instructional time at Santa
Monica High School for one semester

- [B] Expenditures - **Decrease** the expenditure budget in the amount of <\$57,476>, as follows:

1. District-wide - Decrease of 1.25 Physical Activity Specialist - A budget **decrease** in the amount of <\$43,913> is needed to reflect reduced hours of Physical Activity Specialists throughout the District. This is an ongoing decrease.

2. McKinley - 1.00 FTE Kindergarten Teacher - A budget **decrease** in the amount of <\$17,065> is needed as a correction to Budget Adjustment Item A.20 (I.[A]1) in the 10/5/00 Board Materials.

3. Franklin - .125 FTE Physical Education Instructional Aide - A budget **increase** in the amount of \$3,502 is needed to reflect additional aide time needed for increased enrollment. This is an ongoing expenditure.

- [C] Budget Transfers - The following transfers between major object codes have been recommended by budget administrators:

Certificated Salaries	\$27,000
Classified Salaries	\$3,000
Employee Benefits	\$765
Books and Supplies	<\$9,998>
Services, Other Expenses	\$8,098
Capital Outlay	<\$28,865>
Total:	\$ 0

II. GENERAL FUND - RESTRICTED (FUND 03)

- [A] Revenues - **Increase** the revenue budget in the amount of \$1,213,705 to reflect adjustments, as follows:

Perkins Vocational Ed. Grant	\$	8,596
Ed. Tech. Staff Development Grant	<\$	11,023>
Comp. Tchr. Ed. Inst. Grant	\$	38,158
Calif. Tech. Assist. Program	\$	20,732
Standards and Assessments	\$	60,323
School Library Funds	\$	1,141
Instr. Materials Textbooks K - 8	\$	11,063
Instr. Materials Textbooks 9 - 12	\$	2,463
Core Curriculum Funds	\$	2,573
Cal. Serve Grant	\$	8,035
Schiff-Bustamante Funds	\$	304
Classroom Library Allocation	<\$	911>
English Language Acquis. Program	\$	62,150
Gifted and Talented Education	\$	5,487
SMMEF EFG Grants	\$	49,500
Cal. Prof. Devel. Program	\$	1,186

Gifted and Talented Education	\$	5,487
SMMEF EFG Grants	\$	49,500
Cal. Prof. Devel. Program	\$	1,186
10th Grade Counseling	\$	729
School Improvement Program	\$	195,957
Digital High School	\$	<u>757,242</u>
Total:	\$	1,213,705

- [B] Expenditures - Increase the expenditure budget in the amount of \$3,516,051 to reflect adjustments, as follows:

LAAMP Technology Grant <u>Carryover</u>	\$	18,000
LAAMP Grant <u>Carryover</u>	\$	11,500
Stairway <u>Carryover</u>	\$	24,431
Gift Funds <u>Carryover</u>	\$	676,532
Stand. Acct. Code Struct. <u>Carryover</u>	\$	45,191
Instr. Matls. Text. 9-12 <u>Carryover</u>	\$	258,854
Digital High School <u>Carryover</u>	\$	871,092
School Improvement Prog. <u>Carryover</u>	\$	195,957
Learning Network	\$	11,277
Standards and Assessments	\$	60,323
School Library Funds	\$	70,389
Science Lab Grant	\$	99,732
Perkins Vocational Ed. Grant	\$	8,596
Instr. Materials Textbooks K - 8	\$	38,144
Ed. Tech. Staff Development Grant	<\$	11,023>
Comp. Tchr. Ed. Inst. Grant	\$	38,158
Calif. Tech. Assist. Program	\$	20,732
Cal. Serve Grant	\$	8,035
Schiff-Bustamante Funds	\$	184,805
Classroom Library Allocation	\$	25,992
English Language Acquis. Program	\$	62,150
Gifted and Talented Education	\$	87,387
SMMEF EFG Grants	\$	49,500
Cal. Prof. Devel. Program	\$	21,834
10th Grade Counseling	\$	3,212
RGK Foundation	\$	14,155
Core Curriculum K - 8	\$	<u>621,096</u>
Total:	\$	3,516,051

- [C] Budget Transfers - The following transfers between major object codes have been recommended by budget administrators:

Certificated Salaries	<\$	66,770>
Classified Salaries	\$	65,118
Employee Benefits	\$	132
Books and Supplies	<\$	34,236>
Services, Other Operating Expenses	\$	26,879
Capital Outlay	\$	<u>8,877</u>
Total:	\$	0

III. CHILD DEVELOPMENT FUND (FUND 11)

- [A] Budget Transfers - The following transfers between major object codes have been recommended by budget administrators:

Classified Salaries	\$	1,700
Employee Benefits	\$	44
Books and Supplies	<\$	1,744>
Total:	\$	0

IV. CAFETERIA FUND (FUND 30)

- [A] Revenues - **Increase** the revenue budget in the amount of \$81,331 to reflect adjustments, as follows:

<u>State Revenue:</u>	\$	66,331
Increased reimbursement rates based On student participation		

<u>Other Local Revenue:</u>	\$	15,000
Increased commissions from vending machines		

- [B] Expenditures - **Increase** the expenditure budget in the amount of \$55,578 to reflect adjustments, as follows:

1. Increase of 1.00 FTE Food Service Supervisor - Originally funded by the Dept. of Health Services - Nutrition Network Grant, funding has now ceased. This is an <u>ongoing</u> expenditure.	\$	55,578
---	----	--------

The following Budget Planning Summary for 2000-01 reflects the aforementioned adjustments plus anticipated future adjustments.

MOTION MADE BY: *Mr. Pratt*
SECONDED BY: *Ms. Quinones*
STUDENT ADVISORY VOTE: *-*

AYES: *All (7)*
NOES: *None (0)*

BUDGET PLANNING SUMMARY FOR 2001-02 - GENERAL FUND -

FD	1999-00		2000-01		UNRESTRICTED		2000-01		2000-01		2001-02		2002-03	
	UNAUDITED ACTUAL	6-29-00	ORIGINAL BUDGET	FIRST INTERIM	SECOND INTERIM	BUDGET	2000-01 FIRST INTERIM	2000-01 SECOND INTERIM	BUDGET	2000-01 BUDGET	FORECAST	BUDGET	FORECAST	
FUNDING VARIABLES														
ENROLLMENT PROJECTION*														
ENROLLMENT (SECOND MONTH)*														
		12,279	12,500			12,500			12,500			12,500		12,500
		12,142	12,500			12,500			12,500			12,500		12,500
		11,582	11,893			11,893			11,908			11,908		11,908
		11,590	11,889			11,889			11,910			11,910		11,910
		\$4,498.84	\$4,636.84			\$4,636.84			\$4,813.04			\$4,813.04		\$4,967.06
		\$4,184.77	\$4,637.15			\$4,636.84			\$4,813.04			\$4,813.04		\$4,967.06
		\$3,663.834	\$0			\$0			\$0			\$0		\$0
		1.41%	3.17%			3.17%			3.80%			3.20%		3.20%
		\$117.00	\$120.00			\$117.00			\$117.00			\$117.00		\$117.00
		\$6.00	\$0.00			\$6.00			\$6.00			\$6.00		\$6.00
		\$2.12	\$0.00			\$0.00			\$0.00			\$0.00		\$0.00
		31,957	31,957			32,413			32,413			32,413		32,413
		\$73.23	\$74.99			\$74.99			\$98.00			\$100.35		\$100.35
*The "Statistical" Enrollment Projection for 2000-01 is 12,156 students; 344 "additional" permit students have been added in order to achieve 12,500 students. The "Statistical" Enrollment is based on Second Month historical enrollment data. Consequently, during the budget planning process, the "Projection" and the "Enrollment (Second Month)" are the same.														

*The "Statistical" Enrollment Projection for 2000-01 is 12,156 students; 344 "additional" permit students have been added in order to achieve 12,500 students. The "Statistical" Enrollment is based on Second Month historical enrollment data. Consequently, during the budget planning process, the "Projection" and the "Enrollment (Second Month)" are the same.

GENERAL FUND - UNRESTRICTED REVENUES

STATE								
Revenue Limit Sources								
Base Revenue	1	46,777,807	53,303,757		53,395,816	55,416,605	57,189,869	
Unemployment Insurance	1	9,757	0		0	0	0	
Meals for Needy	1	254,994	263,592		263,592	273,608	282,364	
Summer School - Core/Mandated	1	309,568	534,240		534,240	554,541	572,286	
Summer School - Mandated	1	206,507	0		0	0	0	
Intensive Intervention	1	0	161,496		161,496	167,633	172,997	
Revenue Limit Total								
Prior Year Revenue Limit Adjustment	1	47,558,633	54,263,085		54,355,144	56,412,388	58,217,516	
Prior Year Revenue Limit Adjustment - Deficit Factor	1	0	0		0	0	0	
Other State Revenues	1	0	0		0	0	0	
Site Block Grant-One Time								
District Site Block Grant-One Time	1	0	0		326,822	0	0	
Class Size Reduction - Elementary	1	0	0		490,709	0	0	
Class Size Reduction - High School	1	2,934,588	3,176,878		3,044,145	3,159,823	3,260,937	
Class Size Reduction - Prior Yr Adj.	1	247,305	352,195		337,620	350,450	361,664	
Mandated Costs	1	0	0		47,220	0	0	
State Lottery-Unrestricted	1	643,524	557,500		600,000	600,000	600,000	
Staff Development "Buy-Back Days"	1	1,402,681	1,426,647		1,393,481	1,393,481	1,393,481	
Beginning Teacher Salary	1	416,195	433,246		433,246	447,110	461,417	
Other	1	0	0		69,494	72,135	74,443	
Other State Revenue Total	1	5,644,293	5,946,465		6,742,737	6,022,997	6,151,942	

BUDGET PLANNING SUMMARY FOR 2001-02 - GENERAL FUND -

FD	1999-00 UNAUDITED ACTUAL	2000-01 ORIGINAL BUDGET 6-29-00	UNRESTRICTED			2000-01 BUDGET	2001-02 BUDGET FORECAST	2002-03 BUDGET FORECAST
			2000-01 FIRST INTERIM	2000-01 SECOND INTERIM	2000-01 BUDGET			
1	53,202,926	60,209,550	0	0	61,097,881	62,435,385	64,369,458	
STATE SUB TOTAL								
LOCAL								
1	2,261,086	2,396,474			2,430,670	3,176,474	3,252,709	
1	0	0			0	0	0	
1	24,527	0			0	0	0	
1	524,410	537,520			537,520	545,520	575,147	
1	800,000	800,000			800,000	800,000	800,000	
1	133,625	95,823			95,823	100,614	105,645	
1	433,188	375,000			400,000	420,000	445,000	
1	742,254	1,192,840			1,192,840	1,192,840	1,192,840	
1	67,112	120,000			70,000	75,000	75,000	
1	0	0			0	0	0	
1	101,347	130,000			100,000	110,000	130,000	
1	2,000,000	2,000,000			2,000,000	2,000,000	2,000,000	
1	0	3,100,000			2,900,000	0	0	
1	0	150,000			150,000	0	0	
1	58,048	70,491			27,359	27,359	27,359	
1	-8,129	45,000			45,000	45,000	45,000	
1	0	0			0	0	0	
1	0	27,032			27,032	27,032	27,032	
1	73,535	72,000			72,000	72,000	74,000	
1	1,955	2,000			2,000	2,000	2,500	
1	23,000	25,000			25,000	25,000	25,000	
1	3,725	15,000			5,000	5,000	5,000	
1	310,201	0			0	0	0	
1	69,490	0			0	0	0	
1	0	0			5,377	0	0	
1	31,333	0			0	0	0	
LOCAL SUB TOTAL								
1	7,650,707	11,154,180	0	0	10,885,621	8,623,839	8,782,232	
STATE & LOCAL SUB-TOTAL								
1	60,853,633	71,363,730	0	0	71,983,502	71,059,224	73,151,690	

45e

BUDGET PLANNING SUMMARY FOR 2001-02 - GENERAL FUND -

UNRESTRICTED									
FD	1999-00 UNAUDITED ACTUAL	2000-01 ORIGINAL BUDGET 6-29-00	2000-01 FIRST INTERIM	2000-01 SECOND INTERIM	2000-01 BUDGET	2001-02 BUDGET FORECAST	2002-03 BUDGET FORECAST		
EXPENDITURES									
1									
1	32,356,030	33,939,218			34,133,053	34,488,082	34,875,756		
1	9,957,589	9,936,888			10,039,646	10,309,454	10,595,238		
1	7,326,770	8,360,536			8,382,433	8,789,114	9,226,932		
1	1,093,796	1,328,482			1,501,634	1,357,482	1,387,352		
1	4,036,319	4,455,332			5,316,864	4,499,332	4,549,332		
1	503,127	631,863			631,863	657,404	612,255		
1	1,301,690	1,321,194			1,327,286	1,327,286	1,327,286		
1	-578,405	-600,112			-603,600	-615,000	-625,000		
Direct/Indirect Credit									
Prior Year Changes/Adjustment-Cert.Sal.									
1	55,996,916	59,373,401	0	0	60,729,179	60,813,154	61,949,152		
TOTAL EXPENDITURES									
TRANSFERS TO/FROM OTHER FUNDS									
1	-118,034	-360,000			-365,000	-400,000	-420,000		
1	0	0			0	0	0		
1	-640,347	-510,288			-510,288	-457,364	-400,223		
1	-244,838	-250,000			-250,000	-250,000	-250,000		
1	-351,323	-354,541			-351,395	-242,990	0		
1	55,845	20,000			20,000	20,000	20,000		
From Fund 30: Food Serv. Support Noon Aides &									
1	-1,298,697	-1,454,829	0	0	-1,456,683	-1,330,354	-1,050,223		
TRANSFERS SUB TOTAL									
1	0	0	0	0	0	0	0		
OTHER USES									
CONTRIBUTIONS TO RESTRICTED PROGRAMS									
1	-3,349,749	-4,988,914			-4,988,914	-5,200,000	-5,350,000		
1	-322,589	-345,158			-461,741	-376,220	-390,000		
1	-381,142	-544,517			-544,517	-570,000	-580,000		
1	-28,844	0			0	0	0		
1	0	-22,155			-22,155	-22,155	-22,155		
To Fund 3: for ROP									
CONTRIBUTIONS SUB TOTAL									
1	-4,082,324	-5,900,744	0	0	-6,017,327	-6,168,375	-6,342,155		
REVENUE AVAILABLE AFTER CONTR/TRANSFRS									
1	55,472,612	64,008,157	0	0	64,509,492	63,560,495	65,759,312		
BEGINNING BALANCE									
1	4,013,168	1,701,327			3,518,400	7,298,713	10,046,055		
AUDIT/ACCTS. REC.-PAY. ADJUSTMENT									
1	29,536	0	0	0	0	0	0		
REVENUE AVAILABLE & BEGIN BAL									
1	59,515,316	65,709,483	0	0	68,027,892	70,859,209	75,805,366		
OPERATING BALANCE									
1	-524,304	4,634,756	0	0	3,780,313	2,747,341	3,810,160		
BEGINNING BALANCE									
1	4,013,168	1,701,327			3,518,400	7,298,713	10,046,055		

454

BUDGET PLANNING SUMMARY FOR 2001-02 - GENERAL FUND -

	FD	1999-00	2000-01		UNRESTRICTED		2000-01	2000-01	2000-01	2001-02	2002-03
		UNAUDITED ACTUAL	ORIGINAL BUDGET 6-29-00	FIRST INTERIM	SECOND INTERIM	BUDGET	BUDGET FORECAST	BUDGET FORECAST	BUDGET FORECAST		
ENDING BALANCE	1	3,518,400	6,336,082	0	0	7,298,713	10,046,055	13,856,215			
RESERVE COMPONENTS AFTER LEVEL-I											
Revolving Cash	1	20,000	20,000			20,000	20,000	20,000			
Stores Inventory	1	165,000	165,000			165,000	165,000	165,000		20,000	
Prepaid Expenditures	1	0	0			0	0	0		165,000	
Economic Uncertainties	1	3,333,400	6,151,082	0	0	7,113,713	9,861,055	13,671,215		0	
RESERVE REQUIREMENT AFTER LEVEL-I											
G.F. Unrestricted Expenditures	1	55,996,916	59,373,401			60,729,179	60,813,154	61,949,152			
G.F. Restricted Expenditures	1	27,011,812	23,086,401			26,884,860	27,691,406	28,522,148			
Transfers Out and Other Uses	1	1,354,542	1,546,829			1,548,683	1,422,354	1,070,223			
3% Reserve Requirement	1	2,530,898	2,520,199			2,674,882	2,697,807	2,746,246			
Position in Relation to Reserve Requirement	1	802,502	3,630,883	0	0	4,438,831	7,163,247	10,924,969			

459

BUDGET PLANNING SUMMARY FOR 2001-02 - GENERAL FUND -

FD	UNAUDITED ACTUAL	2000-01 ORIGINAL BUDGET	UNRESTRICTED		2001-02 BUDGET FORECAST	2002-03 BUDGET FORECAST
			2000-01 FIRST INTERIM	2000-01 SECOND INTERIM		
		6-29-00				
APPROVED & PROJECTED EXPENDITURE ADJUSTMENTS FOR 2000-01 SUBSEQUENT TO THE ORIGINAL ADOPTED BUDGET						
1	Site Block Grants - BOE 8-10-00				326,822	
2	District Block Grants - BOE 8-10-00				490,709	
3	SARB - Spec. Serv. Contact - BOE 8-10-00				9,784	
4	SMHS - Music Assistant - BOE 8-10-00				5,484	
5	Muir - Technology Aide - BOE 8-10-00				4,560	
6	MHS - Technology Aide - BOE 8-10-00				13,676	
7	Lincoln - Athletic Assistants - BOE 8-10-00				8,000	
8	Ed. Serv. - Asst. Supt Salary Adj. - BOE 8-10-00				6,687	
9	Fiscal Serv. - Director Salary Adj. - BOE 8-10-00				15,035	
10	Indirect Cost Adjustment - BOE 8-10-00				-3,488	
11	EDC - Office Asst., to 12 mos. - BOE 9-7-00				908	
12	SMHS - Office Asst. to 12 mos - BOE 9-7-00				2,889	
13	SMHS - 1 FTE Office Asst. - BOE 9-7-00				39,514	
14	Franklin - Additional Summer Clerical Days - BOE 9-7-00				737	
15	Computer Services - "Mac" Technician - BOE 9-7-00				48,692	
16	School Formula Carry Over - BOE 9-7-00				172,652	
17	Personnel - Carry Over Principal Search - BOE 9-7-00				30,000	
18	Transportation LGFC Carry Over-School Bus - BOE 9-7-00.				85,521	
19	Transportation LGFC - Additional Bus Driver - BOE 9-7-00.				31,062	
20	Deferred Maintenance Increase per Statute - BOE 9-21-00				5,000	
21	Reduce Flex Fund Contribution - BOE 9-21-00				-3,146	
22	Ed Services-Carry Over-Music Instrument Repr-BOE 9-21-00				6,000	
23	SMHS - Increase Band Transportation - BOE 9-21-00				5,000	
24	SMHS - Increase Color Guard Support - BOE 9-21-00				3,000	
25	Student Serv. - Emerg. Preparedness - BOE 9-21-00				7,500	
26	Adams-Accompanist 1.5 hrs./day -BOE 10-6-00				5,647	
27	McKinley-1 FTE Teacher - BOE 10-6-00				64,851	
28	Adams- 2 Add. Teaching Sections - BOE 10-6-00				21,527	
29	Lincoln- 2 Add. Teaching Sections - BOE 10-6-00				21,527	
30	Ed. Serv. - Music Teacher Specialist - BOE 10-6-00				19,430	
31	SMHS- 8 Add. Teaching Sections - BOE 10-6-00				86,110	
32	Physical Act Spec. - Reduce 1.25 FTE - BOE 10-19-00				-43,913	
33	Franklin - 125 FTE Inst Aide-PE - BOE 10-19-00				3,502	
34	McKinley-1 FTE Teacher - Adjust - BOE 10-19-00				-17,065	
TOTAL OF ADJUSTMENTS/CHANGES						1,474,215

DAC AND COMMUNITY REQUESTS:

45h

BUDGET PLANNING SUMMARY FOR 2001-02 - GENERAL FUND -

	UNRESTRICTED				2001-02		2002-03	
	1999-00	2000-01	2000-01	2000-01	BUDGET	FORECAST	BUDGET	FORECAST
	UNAUDITED	ORIGINAL	FIRST	SECOND				
FD	ACTUAL	BUDGET	INTERIM	INTERIM				
	6-29-00							

1

BOARD MEMBER ITEMS FOR CONSIDERATION AND DISCUSSION:

1

LEVEL I - EXPENDITURE ADJUSTMENTS FROM THE 2000-01 PROJECTED ACTUAL BUDGET TO THE 2001-02 BUDGET

DECREASES:

1 Classified Turnover/Vacancy "Savings"	-75,000	-75,000	-75,000
2 Certificated Teacher Turnover "Savings" (20 FTEs @ \$7,400 each, including benefits)	-148,000	-148,000	-148,000
3 Reduce Contribution for Flex Fund	-108,405	-108,405	-242,990
4 Site Block Grants - BOE 8-10-00	-326,822	-326,822	0
5 District Block Grants - BOE 8-10-00	-490,709	-490,709	0
6 Franklin - Additional Summer Clerical Days - BOE 9-7-00	-737	-737	0
7 School Formula Carry Over - BOE 9-7-00	-172,652	-172,652	0
8 Personnel - Carry Over Principal Search - BOE 9-7-00	-30,000	-30,000	0
9 Transportation LGFC Carry Over-School Bus - BOE 9-7-00	-85,521	-85,521	0
10 Board Election Costs	-50,000	-50,000	
11 Ed Services-Carry Over-Music Instrument Repr-BOE 9-21-00	-6,000	-6,000	
12 Student Serv. - Emerg. Preparedness - BOE 9-21-00	-7,500	-7,500	
32 Ed. Serv. - Music Teacher Specialist - 10-6-00	-19,430	-19,430	

TOTAL DECREASES

-1,520,777 -465,990

INCREASES:

1 Board Election Costs	0	0	50,000
2 Additional Teachers for Enrollment Growth - 0 FTE-01-02; 0 FTE-02-03	0	0	0
3 HW Insurance Premiums - 10% PERS Increase at mid-year (950 FTEs @ \$280/FTE)	265,430	265,430	291,973
4 Certificated Salary Schedule - Step/Longevity/Advance Placement - Includes Benefits	504,306	504,306	514,644
5 Classified Salary Schedule - Step/Longevity Movement - Includes Benefits	386,815	386,815	400,972
6 Administrative Salary Schedule - Step/Longevity Movement -Includes Benefits	71,270	71,270	72,370
7 Schools' Formula Allocation for Supplies & Equipment- Growth & 3% COLA	29,000	29,000	29,870
8 Vehicle Replacement Plan	25,541	25,541	-45,149
9 Increase Workers Compensation Premiums (Fd 01 & Fd 03)	40,000	40,000	40,000
10 Additional "Voluntary" Staff Development/Revenue Increase - State Buy Back Program	13,864	13,864	14,317

TOTAL INCREASES

1,336,226 1,368,997

TOTAL DECREASES/INCREASES-LEVEL I

-184,551 903,007

451

INFORMATION ITEMS

TO: BOARD OF EDUCATION

INFORMATION

10/19/00

FROM: SUPERINTENDENT/JOSEPH N. QUARLES

RE: SUPERINTENDENT SEARCH/CONTINUING UPDATE

INFORMATION COMMUNICATION I.1

At the Board's direction, staff sent out the Request for Proposal (RFP) letters for the Superintendent Search, with the intent of hiring a Superintendent no later than March 1, 2001. The letters were sent to twenty-one Search Firms (for listing, see agenda of October 5, 2000) on Tuesday, September 26, 2000, and requires interested firms to respond by October 13, 2000.

There will be a verbal update at this meeting regarding response to the RFPs.

Discussion

-21 RFP's were sent out, six responses were received.

-Interviews with Search firms will be set for the time period of October 27 - 30, the exact date will be posted.

TO: BOARD OF EDUCATION

INFORMATION

10/19/00

FROM: SUPERINTENDENT/SUE GEE

RE: SUPPLEMENTAL TEXTBOOK TO BE ADOPTED

INFORMATIONAL COMMUNICATION I.2

It is recommended that the following supplemental textbook(s) be adopted for use in the Santa Monica-Malibu Unified School District. The Board will take action to adopt this book at the next Board of Education Meeting.

COMMENT: In accordance with the Board of Education policy, the textbook listed below will be on public display for the next two weeks in the Educational Services Department, located at 1638-17th Street, Santa Monica, CA 90404. The Board will take action to adopt this book at the next Board of Education Meeting 11/02/00.

HARD TIMES, by Studs Turkel, Random House Publishing, English, Grade 11, SUPPLEMENTARY.

XIII CONTINUATION OF PUBLIC COMMENTS

XIV BOARD MEMBER COMMENTS

Board Member Comments are where a Board member may make a brief announcement or make a brief report on his or her own activities relative to Board business. There can be no discussion under "BOARD MEMBER COMMENTS".

XV FUTURE AGENDA ITEMS

Items for future consideration will be listed with the projected date of consideration. The Board of Education will be given any backup information available at this time.

XVI CLOSED SESSION

The Board of Education may adjourn to CLOSED SESSION to complete discussion on items listed for CLOSED SESSION.

XVII ADJOURNMENT

The meeting was adjourned in memory of Maitai Peterson, a French teacher at Santa Monica High School.

Motion was made by Ms. Quiñones, seconded by Mr. Pratt and carried to adjourn the meeting at 10:15 p.m.

There will be a closed session meeting of the Board of Education at 6:00 p.m. on October 23, 2000 in the Administrative Offices of the School District, 1651 - 16th Street for the following reason: Conference with the District Negotiations Team regarding 2000-01 negotiations with the Santa Monica-Malibu Teachers Association (SMMCTA), the Service Employees International Union (SEIU), Local 660, and non-represented employees, pursuant to Section 54957.6 of the Brown Act

The next regular meeting is scheduled for 7:00 p.m. on Thursday, November 2, 2000 in the auditorium of HRL (Hughes Research Laboratories), 3011 Malibu Canyon Road in Malibu.

APPROVED: 12/14/00

President:

Secretary: