

**Santa Monica-Malibu Unified School District
Board of Education
MINUTES**

**UNADOPTED
May 15, 2003**

A regular meeting of the Santa Monica-Malibu Unified School District's Board of Education was held on Thursday, May 15, 2003. Following Roll Call at 4 p.m. at the District Offices 1651 16th Street, the Board moved to the Board Conference Room for Closed Session, for the reasons listed in Section III, below. The Board reconvened in Open Session at 7:13 p.m. in the Santa Monica City Council Chambers, 1685 Main Street, Santa Monica.

I CALL TO ORDER

- A. Roll Call
- B. Pledge of Allegiance

II PUBLIC COMMENTS FOR CLOSED SESSION ITEMS ONLY

III CLOSED SESSION:

- Personnel Matters Related to Public Employee discipline/dismissal/release/employment status pursuant to GC§54957, as cited in the Brown Act
- Conference with Superintendent and Assistant Superintendents regarding 2002-2003 Strategies for Negotiations with Non-Represented Employee, the Santa Monica-Malibu Classroom Teachers Association (SMMCTA) and the Santa Monica Chapter, Local 660, of the Service Employees International Union (SEIU) pursuant to §GC 54956.8, as cited in the Brown Act
- Public Employee: Performance Evaluation/Superintendent/Contract/Performance Targets, pursuant to GC §54954.5 and GC§54957, as cited in the Brown Act.

IV BOARD OF EDUCATION - COMMENDATIONS / RECOGNITIONS

- Teachers of the Year - 2002-03
 - Laurel Thorne - Cabrillo
 - Lisa Bartoli - Franklin
 - Susan Dilamarter - Franklin
 - Christine Hovest - McKinley
- SMMUSD District Teacher of the Year: Dr. Christine Hovest
- Outstanding Student Competition - ROP
 - Josephine Kalika - Gold Medal - Creative Arts Occupations
 - Berenice Covarrubias - Gold Medal - Agriculture/Home Economics Occupations
 - Ben Usen - Silver Medal - Marketing Occupations

If you will require accommodation to participate in the Board meeting, please notify the Superintendent's Office at least one day prior to the meeting.

May 15, 2003

-i-

IV BOARD OF EDUCATION - COMMENDATIONS / RECOGNITIONS (con't)

- AVID Competition - Essay Through Participation:
Daniel Gerena, John Adams Middle School, 3rd Place
Kristina Lizama, Samohi - 1st Place Winner
Diego Brito, Samohi - 3rd Place Winner
Maritza Murguia, Samohi - 4th Place Winner
- McKinley Elementary School - Musical Presentation
Student musicians performed the Star Spangled Banner and Skip to My Lou and were directed by Dr. Christine Limb and Mr. Bruce Tellier
McKinley Students included:
Tycho Horan Jake Schmidt
Sun Kim Raquel Hernandez-Solis
Tayelor McKay Brianna Green
Shiori Takemori Synthia Perez-Ramirez
Zoe Billington Jacob Hassett
Kamila Gonzalez Andrew Brown
Sydney Nash
- McKinley Elementary School PTA Co-President's Report - Cindi Mladinov
A copy of Ms. Mladinov's report is attached.

V APPROVAL OF THE AGENDA

VI APPROVAL OF MINUTES

- A.1 None available for this meeting. 1

VII CONSENT CALENDAR

Consent agenda items are considered routine, as agreed by the President, Vice President and Superintendent, requiring no discussion, and are normally all approved at one time by the Board of Education. However, members of the Board of Education, staff, or the public may request an item be removed from the consent agenda for clarification and/or discussion. Consideration will occur during Section XI.

Curriculum and Instruction

- A.2 Approval of Independent Contractors 2
A.3 Adoption of Tri-City Special Education Local Plan (SELPA) 3
A.4 Approval of the Local Education Agency Plan (LEAP) as Required
By the No Child Left Behind Act of 2001 (NCLB) 4
A.5 Coordinated Compliance Review for Child Development Services 5

Business and Finance

- A.6 Acceptance of Gifts - 2002-03 6-6d
A.7 Award of Purchase Orders 7-7c
A.8 Attendance Calendar for 2003/2004 8-8a
A.9 Renew Contract - School Services of California, Inc. 9

Proposition X /State Modernization

If you will require accommodation to participate in the Board meeting, please notify the Superintendent's Office at least one day prior to the meeting.

None

Personnel

A.10	Certificated Personnel - Elections, Separations	10-13
A.11	Special Services Employees	14
A.12	2003-04 Declaration of Need for Fully Qualified Educators	15-15d
A.13	Classified Personnel - Merit	16-17
A.14	Classified Personnel - Non-Merit	18
A.15	Adopt Resolution No. <u>02-31</u> , Classified School Employees Week 2003 . . .	19-20

General Functions

none

VIII PUBLIC COMMENTS

Public Comments is the time when members of the audience may address the Board of Education on items not scheduled on the meeting's agenda. All speakers are limited to three (3) minutes. When there is a large number of speakers, the Board may reduce the allotted time to two(2) minutes per speaker. The Brown Act (Government Code) states that Board members may not engage in discussion of issues raised during "VIII, Public Comments" except to ask clarifying questions, make a brief announcement, make a brief report on his or her own activities, or to refer the matter to staff.

This Public Comment section is limited to 20 minutes. If the number of persons wishing to address the Board of Education exceeds the time limit, additional time will be provided in Section **XVI, CONTINUATION OF PUBLIC COMMENTS.**

- Franklin Students, Nora Polon, Natalie Wilson, Rebecca Steinberg, Ali Dickie and Zoe Gillespie presented the Board of Education with a check for \$300, money they raised by selling baked goods and lemonade. The students expressed their desire to help in some way because their 5th grade teacher, Ms. Silhavy, had received a "pink slip" due to budget reductions. The Superintendent and Board accepted the check, made out to the Committee for Excellence in Education, with gratitude and indicated that it would be forwarded to Cheri Orgel, one of the co-chairs on the Committee.
- The following individuals addressed the Board of Education with regard to the June 3, 2003 election, in support of Measure S, which if passed, will provide the district with \$6.5 million per year for 6 years to fund educational programs.

Police Chief James T. Butts, Jr.
Julie Kinsinger, Will Rogers Teacher
Diane Farlow, Juan Cabrillo Teacher
Carol Jago, Santa Monica Teacher
Lenny Goldsmith, Malibu High PTSA
Jane Jeffries, SMMUSD Health Services
Walt Keller, Malibu Community
Nat Trives, Former Mayor, Santa Monica
Monsignor Lloyd Torgerson, St. Monica's
Catholic Church

Pat Cairns, Juan Cabrillo, Principal
Keryl Cartee, SEIU Chief Steward
Adam Panish, Malibu High Teacher
John Petz, Santa Monica Community
Ann McKechnie, Santa Monica High -
Mortensen Library
Joni Swenson, Santa Monica High -
Orchestra Teacher
Ilene Straus, Santa Monica High CEO

IX COMMUNICATIONS

If you will require accommodation to participate in the Board meeting, please notify the Superintendent's Office at least one day prior to the meeting.

May 15, 2003

-iii-

The Communications section provides an opportunity for the Board of Education to hear reports from the individuals or Committee representative listed below. All reports are limited to 5 minutes or less. However, if more time is necessary, or if a report will not be presented, please notify the Board secretary eight work days prior to the date of the meeting.

A. Student Board Member Reports

Moises Castillo stated that the recent vandalism at Santa Monica High School is not to be associated with any type of senior prank. He further stated that he felt the acts were such that he associated them as a “hate crime.” Although there may be some [students] who may feel they are not part of the school community, the acts should not reflect on the senior class.

Moises reported that the Roberts Art Gallery Senior Art Show will take place beginning May 22 at 3:30 p.m. Everyone is welcome to come by.

ASB elections will take place May 27-29. The new student board representative should be known by the next regular meeting, June 12, 2003

Moises reported that many students at Santa Monica High support Measure S and that those who are eligible have registered to vote.

Lastly, Moises introduced three Santa Monica High students who expressed their concerns about the Redesign Plan for Santa Monica High: Bryce Maddock, Anthony Simmons and Andy Knab. Among other comments, the students stated that they felt students had not been included in the Redesign planning and further, that they had not been treated fairly.

Ms. Christine Hoff was absent.

B. School Report - McKinley Elementary School - See section II

C. SMMCTA Reports

Harry Keiley reported that SMMCTA is working hard for the passage of Measure S. He stated that he hoped the communities of Santa Monica and Malibu will join with the teachers union to bring about the success of the school funding measure.

D. SEIU Report

A copy of Ms. Cartee’s report is attached.

E. Santa Monica-Malibu Education Report - No report

F. PTA Council President Report

Cheri Orgel stated that this will be her last report as PTA Council President. She stated that it has been her pleasure to have served as PTA Council President for two years and that she has learned much. Lastly, PTA advocates for all children and is working in support of Measure S.

G. School Funding Measure

Ralph Mechur and Kathy Wisnicki provided an update on the campaign in

If you will require accommodation to participate in the Board meeting, please notify the Superintendent’s Office at least one day prior to the meeting.

May 15, 2003

-iv-

support of Measure S. There will be an all out push to get everyone to vote on June 3, 2003. Ms. Wisnicki stated that this measure has brought out many volunteers in Malibu and many more are inquiring how they can help get the measure passed. Those wishing to become involved in the closing days leading up to election day were encouraged to call the campaign office.

H. Personnel Commission Report

Commissioner Celia Carroll was present to give the report (attached)..

I. District Advisory Committee (DAC) Reports

C Special Education DAC

Ms. Tricia Crane, chair of the Special Education DAC, made the Committee's report to the Board. A copy is attached.

- **Bilingual District Advisory Committee**

Mr. Fauntino Gutierrez, presented the Bilingual DAC report. A copy is attached.

X Superintendent's Report

The Superintendent and/or Assistant Superintendents may report on items not requiring action by the board but are of interest to the Board and public.

- Superintendent Deasy addressed the Board of Education regarding the recently released Governor's May Revise. Mr. Deasy stated that although it appears that further cuts may not be necessary, the planning by the Board of Education for the anticipated budget shortfall from the State of California was still a reality for the district. The Superintendent stated that without additional funds, the reductions approved by the Board of Education would have to be implemented. In response to a question as to how staff would proceed should Measure S pass, Mr. Deasy stated that staff would bring recommendations to the Board in accordance with restoration packages previously submitted to the Board. Mr. Deasy indicated that information about the impact on the District of the May Revise which he shared with the Board this evening would be included a press release on Friday morning. A copy is enclosed.

MAJOR and DISCUSSION Items

As a general rule, items under MAJOR and DISCUSSION will be listed in order of importance as determined by the President, Vice President and Superintendent. Individual Board members may move to request a change in the order prior to consideration of any Major item. The Board may also move any of these items out of order to be heard immediately following PUBLIC COMMENTS if it appears that there is special interest by the public or as a courtesy to staff members making presentations to the Board.

XI MAJOR ITEMS

These items are considered to be of major interest and/or importance and are presented

If you will require accommodation to participate in the Board meeting, please notify the Superintendent's Office at least one day prior to the meeting.

May 15, 2003

-v-

for **ACTION (A)** or **INFORMATION (I)** at this time. Many have been reviewed by the Board at a previous meeting under the Discussion Items section of the agenda.

Action Items are submitted to the Board of Education with a recommendation from the Superintendent. They may be tabled or postponed by action of a quorum of the Board. Items pulled from Section VII, Consent Agenda, will be deliberated in Section XI following the scheduled Action Items. When a member of the Staff presents an item, the Board may ask clarifying questions before the Public is heard on that item. Board discussion of the item will take place after hearing from the Public.

A.16	Approval of Special Education Contracts	21-22
A.17	Authorization to Purchase Apple Computers	23
A.18	Adopt Resolution Number <u>02-32</u> - Approving Assignment of Delinquent Tax Receivables to the California Statewide Delinquent Tax Finance Authority for the Fiscal Years Ending June 30, 2003 and 2004, and Authorizing Execution and Delivery of Related Documents and Actions	24-26
A.19	Approval of Application for Senior Exemption in School Funding Measure - Measure "S"	27-29
A.20	Adoption of Resolution Number 02-33: Reduction in Hours of Cafeteria Workers I & II	30-32
A.21	Appointment to Fill One Vacancy - Financial Oversight Committee	33
D.1	Master Facilities Joint Use Agreement with the City of Malibu	34

XII DISCUSSION ITEMS

These items are submitted for information (FIRST READING) and discussion. Action will generally be considered at the next regularly scheduled meeting of the Board.

D.1	Advanced Placement and Honors Programs (PowerPoint Presentation by Superintendent Deasy and Steve Cannell, State & Federal Projects)	35
-----	--	----

XIII INFORMATIONAL ITEMS

None

XIV BOARD MEMBER ITEMS

These items are submitted by individual Board members for information or discussion, as per Board Policy 8320(b).

XV REQUESTS BY MEMBERS OF THE PUBLIC OR DISTRICT ADVISORY COMMITTEES TO ADDRESS THE BOARD OF EDUCATION

These items are submitted by members of the public to address the Board of Education on a matter within the jurisdiction of the Board, as per Board Policy 8320(c). Requests must be submitted to the Superintendent in writing ten days before the Board meeting or prior to agenda planning, in accordance with the established agenda planning schedule, whichever is less. The written request will not exceed 500 words and will include, as an attachment, brief background information and the reason for the request.

XVI CONTINUATION OF PUBLIC COMMENTS

A continuation of Section VIII, as needed.

If you will require accommodation to participate in the Board meeting, please notify the Superintendent's Office at least one day prior to the meeting.

May 15, 2003

-vi-

XVI CONTINUATION OF PUBLIC COMMENTS

A continuation of Section VIII, as needed.

XVII BOARD MEMBER COMMENTS

Board Member Comments is the section where a Board member may make a brief announcement or make a brief report on his or her own activities relative to Board business. There can be no discussion under "BOARD MEMBER COMMENTS".

XVIII FUTURE AGENDA ITEMS

Items for future consideration will be listed with the projected date of consideration. The Board of Education will be given any backup information available at this time.

XIX CLOSED SESSION

The Board of Education will adjourn to CLOSED SESSION to complete discussion on items listed for CLOSED SESSION following the regular business meeting.


XX ADJOURNMENT

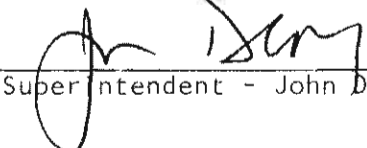
On a motion by Mr. de la Torre, seconded by Mr. McLoud, the Board of Education voted 7-0 to adjourn the meeting at 11:50 p.m.

The next regular meeting of the Board of Education is scheduled to be held on Thursday, June 12, at 7 p.m. in the Board Room of the District Offices, 1651 16th Street, Santa Monica, CA, unless otherwise noticed.

Meetings held in Santa Monica are taped for rebroadcast and played on Cable Channel 16 (City TV) at 11:00 AM on the Sunday following the Board meeting.
Meetings are rebroadcast in Malibu on Government Access Channel 15 every Thursday at 2 PM and every Saturday & Sunday at 8 PM

Approved: June 12, 2003


President - Maria Leon-Vazquez


Superintendent - John Deasy

If you will require accommodation to participate in the Board meeting, please notify the Superintendent's Office at least one day prior to the meeting.

May 15, 2003

-vii-

Board Of Education Meeting Schedule					
JULY THROUGH DECEMBER, 2002					
Month	1st	2nd	3rd Discussion Meeting	4th	Special
July					No Meetings in July
August		8		22	23 - tentative: Board Retreat (29)
September	5		19 *		19 - Data Review Discussion Session
October	3 **		17 *		(30) 17- Race and Discipline Workshop
November	7		21 *		-29
December	5	12	19		(12) Tentative Reschedule of 12/5/02 19 - Board Agenda Management and SIP's Workshop
REVISED REVISED JANUARY THROUGH JUNE, 2003 REVISED REVISED					
January		9		23	23: Charter Schools discussion 30 - Parcel Tax
February	6 **		20 *		1: Board Retreat 20: Institute for Learning discussion
March	6		19(Wed)		19: Standards-based Instruction discussion 20-21 Stairway to the Starts (Civic Aud)
April	3			24	(Spring break 4/16/03 thru 4/25/03) 24: Preliminary Budget Planning discussion
May	1 **	8	15 *		(29) 8: Special Meeting 15: Budget Planning discussion
June		12		26	12 W/O 6/16: Graduations

** Malibu Meetings (10/3, 2/6/, 4/3, 5/1, - Malibu High School Auditorium 30215 Morningview Drive, Malibu.

* Santa Monica City Council Chambers (9/19, 10/17, 11/21, 2/20/03, 5/15) - 1685 Main Street, Santa Monica.

Agenda Distribution:

A copy of the Table of Contents is posted 72 hours in advance of regularly scheduled Board of Education meetings and is also accessible to the public 24 hours/day at the District Offices' entrance, 1651 16th Street in Santa Monica.

Complete Board of Education agendas are also available in *pdf* format, 24/7, on the District's website:

www.smmusd.org.

If you will require accommodation to participate in the Board meeting, please notify the Superintendent's Office at least one day prior to the meeting.

May 15, 2003

-viii-

**Santa Monica-Malibu Unified School District
Board of Education
May 15, 2003**

I CALL TO ORDER

4 p.m.
4:01 adjourn to closed session
7:13 p.m. reconvene public meeting

A Roll Call (all present)

Maria Leon-Vazquez - President
Jose Escarce - Vice President
Emily Bloomfield
Julia Brownley
Oscar de la Torre
Mike Jordan
Shane McLoud

Moises Castillo -- out at 9:20 p.m.
Santa Monica High School Student Representative
Christine Hoff -- absent
Malibu High School Student Representative

B Pledge of Allegiance

Lead by Moises Castillo

II CLOSED SESSION

There was no action taken in Closed Session. The Board did begin the Superintendent's evaluation and set Saturday, June 21 as the next meeting date to continue the evaluation process.

ATTACHMENTS

IX COMMUNICATIONS:

- B. School Report - McKinley Elementary School
- D. S.E.I.U. Report
- H. Personnel Commission Report
- I. District Advisory Committee (DAC) Reports:
 - Special Education DAC
 - Bilingual District Advisory Committee

Board Of Education Meeting Schedule					
JULY THROUGH DECEMBER, 2002					
Month	1st	2nd	3rd Discussion Meeting	4th	Special
July					No Meetings in July
August		8		22	23 - tentative: Board Retreat (29)
September	5		19 *		19 - Data Review Discussion Session
October	3 **		17 *		(30) 17- Race and Discipline Workshop
November	7		21 *		-29
December	5	12	19		(12) Tentative Reschedule of 12/5/02 19 - Board Agenda Management and SIP's Workshop
REVISED REVISED JANUARY THROUGH JUNE, 2003 REVISED REVISED					
January		9		23	23: Charter Schools discussion 30 - Parcel Tax
February	6 **		20 *		1: Board Retreat 20: Institute for Learning discussion
March	6		19(Wed)		19: Standards-based Instruction discussion 20-21 Stairway to the Starts (Civic Aud)
April	3			24	(Spring break 4/16/03 thru 4/25/03) 24: Preliminary Budget Planning discussion
May	1 **	8	15 *		(29) 8: Special Meeting 15: Budget Planning discussion
June		12		26	12 W/O 6/16: Graduations

** Malibu Meetings (10/3, 2/6/, 4/3, 5/1, - Malibu High School Auditorium 30215 Morningview Drive, Malibu.

* Santa Monica City Council Chambers (9/19, 10/17, 11/21, 2/20/03, 5/15) - 1685 Main Street, Santa Monica.

Agenda Distribution:

A copy of the Table of Contents is posted 72 hours in advance of regularly scheduled Board of Education meetings and is also accessible to the public 24 hours/day at the District Offices' entrance, 1651 16th Street in Santa Monica.

Complete Board of Education agendas are also available in *pdf* format, 24/7, on the District's website:

www.smmusd.org.

If you will require accommodation to participate in the Board meeting, please notify the Superintendent's Office at least one day prior to the meeting.

May 15, 2003

-viii-

**Santa Monica-Malibu Unified School District
Board of Education
May 15, 2003**

I CALL TO ORDER

4 p.m.
4:01 adjourn to closed session
7:13 p.m. reconvene public meeting

A Roll Call (all present)

Maria Leon-Vazquez - President
Jose Escarce - Vice President
Emily Bloomfield
Julia Brownley
Oscar de la Torre
Mike Jordan
Shane McLoud

Moises Castillo -- out at 9:20 p.m.
Santa Monica High School Student Representative
Christine Hoff -- absent
Malibu High School Student Representative

B Pledge of Allegiance

Lead by Moises Castillo

II CLOSED SESSION

There was no action taken in Closed Session. The Board did begin the Superintendent's evaluation and set Saturday, June 21 as the next meeting date to continue the evaluation process.

ATTACHMENTS

IX COMMUNICATIONS:

- B. School Report - McKinley Elementary School
- D. S.E.I.U. Report
- H. Personnel Commission Report
- I. District Advisory Committee (DAC) Reports:
 - Special Education DAC
 - Bilingual District Advisory Committee

Good evening, I am Cyndi Mladinov, Co-President of the McKinley PTA.

There is much to be proud of at McKinley. It would be an understatement to say we have a very diverse school. The McKinley students speak over 20 languages in their homes and span all social and economic boundaries. It's really been very exciting to be part of this community.

This year's Reflection program was our biggest yet with over 60 students participating and 2 students placing at the District level. We had more Honor Orchestra students this year, than in the past -- some of which you have heard from this evening. Dr. Christine Hovest, our reading specialist, was chosen as SMMUSD's Teacher of the Year. And of course, our McKinley garden. All grade levels participate in maintaining and taking care of their own "plot". This year, we also had a class of 5th graders mentor a multi-age class of kindergarteners and 1st graders. There have been many harvests this year. It is really a terrific program and very inspiring to watch these children take responsibility and pride over their "plots" of land. Not only is the McKinley Garden the largest garden in all of the district schools, but it is becoming nationally known as well. In fact, Eric M. Bost, USDA Undersecretary of Food, Nutrition and Consumer Services, visited the McKinley garden and had a farmers' market salad bar lunch in the school cafeteria! The program is also being looked at as a model for school gardens across the nation.

We even have a few firsts this year!

We held our first talent show (which included parents performing with their children) and there is an upcoming 5th grade camping trip. Hopefully, both of these will become annual events for our students.

I could not be more proud to share with you these amazing accomplishments at McKinley Elementary School, but at the same time, I could not be more apprehensive about the cuts our district is facing. I know I may be preaching to the choir but because this is being taped, and because my family has a unique perspective when it comes to this community, I would like to take the opportunity to say a few words to everyone who is listening.

Our family has lived in Santa Monica for many years -- our son attended McKinley, my husband and I coached soccer here, and I also served as PTA President from 1998 to 1999 before my husband and I moved our family to San Jose in 1999. We lived there for 2 years and then returned to Santa Monica and so, we have the perspective of having lived here, relocated somewhere else and then choosing to move back.

Don't take this community for granted. I am very fortunate to be an involved parent. I know my children will most likely be OK because I am able to be there for them. But my husband, Tynan, and I have chosen not to focus just on our children, but to look at EVERY child and make sure that opportunities that children rightfully deserve are available to them! We know it is difficult to remain focused on such goals as we face the cuts to our school system. It is instinctual to make sure that our own children are taken

care of, but we must keep in mind the bigger picture of community as we try to do at McKinley.

We are extremely lucky and must preserve what we all have built here together! McKinley is a wonderful school and everything is going well. But I am scared because if Measure S does not pass, our continued growth and continued success is in jeopardy! Now more than ever our kids need our support. I know that because I see every day at McKinley what can happen when children are given the tools and chance to succeed. They succeed!

Thank you for all that you have done to make McKinley such a wonderful place. Thank you for allowing us to be part of it. Thank you for your continued support!

S.E.I.U. Board Report

Thursday, May 15, 2003

7:00 P.M.

SEIU Local 660 is working with the SOS Funding Committee in providing financial support, and recruitment support among classified employees, community members and county union members to ensure a strong voter turnout on June 3rd. SEIU has assigned staff member, Gerry Vaughan, Communication Specialists to the Prop S Committee. Gerry has background work in the success campaign of Measure B (for Trauma Centers), which was a parcel tax and which passed with 73% of the vote in Los Angeles county. I am pleased to inform the Board of Education and the Santa Monica Community that on behalf of SEIU Local 660 and the classified employees of SMMUSD, I presented to the Prop S committee at their April 30th meeting, a check for \$25,000.

SEIU Local 660 continues to actively work with our elected officials in Sacramento to minimize the impact of the state budget crisis on public schools. SEIU staff is continually addressing members of the State Assembly and Senate on the concerns and needs of public schools. This project is important for the long-term resolution to school funding.

During the week of April 28th through May 2nd, I met with 87 classified employees who received layoff notices. Currently, the District and SEIU are moving into the 2nd phase of the layoff process, which is to negotiate the impact of the layoffs. This is indeed a difficult time for all of us. It is important to remember that many of the employees impacted are members of this community as well as parents of students in our district.

Next week is Classified Employee Appreciation Week. As the Chief Steward, I implore all administrators and principals to take a few extra moments and acknowledge classified employees for the service they provide. It would be especially meaningful, if it could be done on a personal level.



PERSONNEL COMMISSION:

*Russell Barnard
Celia Carroll
Pam Brady*

Office of the Personnel Commission

*John J. Sliss
Director of Classified Personnel/
Secretary to the Personnel Commission*

MEMORANDUM

To: Board of Education, Superintendent Deasy

From: Celia Carroll, Chair SMMUSD, Personnel Commission

Date: May 15, 2003

Subject: Communications Report from the Personnel Commission

During the week of April 28 - May 2, 2003, eighty-three (83) 30-minute appointments were scheduled with classified employees who were noticed of their layoffs effective June 30, 2003. In these meetings, the Director of Classified Personnel and representatives from SEIU discussed:

1. Displacement (bumping) rights
2. Re-employment rights
3. Topics for the Informational Workshop

There were 28 classified employees who exercised displacement rights. Next week, additional notices of layoff by displacement rights will be sent out. We anticipate that this process may continue for several more weeks as additional cuts precipitate more classified layoffs.

An Informational Workshop is scheduled for Monday, May 19, 2003. The Personnel Commission has arranged for representatives from the Employment Development Department, County of Los Angeles Community Services, Work Source Job Placement & Training, and CalPERS to conduct a presentation.

At our April 8th Personnel Commission meeting we recognized Julio Lombera and Rufus Surles, Custodians at Franklin, Cynthia Crawford, Library Assistant at John Adams Middle School, and Nancy Patterson, Administrative Assistant at Grant Elementary School, for their exceptional classified service.

Finally, thank you for joining the Personnel Commission on the Board of Education Resolution No. 02-31 "Classified School Employees Week 2003" Agenda Item A.15

Santa Monica-Malibu Unified School District

1651 Sixteenth Street* Santa Monica* California 90404-3891* (310) 450-8338* www.smmusd.org

Board of Education: Emily Bloomfield * Julia Brownley * Jose Escarce * Oscar de la Torre * Mike Jordan * Maria Leon-Vasquez * Shane McLoud
John E. Deasy, Superintendent of Schools

**Annual Report of the District Advisory Committee on Special Education
To the Board of Education
Santa Monica Malibu Unified School District
May 15, 2003**

Good evening members of the Board and Supt. Deasy. Thank you for this opportunity to speak with you about the work of the Special Education District Advisory Committee and to offer our specific recommendations.

These are difficult, challenging times for all of us. We know we must pass the School Funding Measure and members of our committee have been working hard to get out the Yes vote. We are also concerned the pending reauthorization of the Individuals with Disabilities Education Act – HR 1350, which our members oppose.

We have been actively lobbying our state legislators regarding HR 1350. We met with California Congressman Henry Waxman, who concurred with our concerns about the proposed changes to IDEA and the Congressman subsequently voted no on HR 1350 in the House. The bill now proceeds to the Senate and in anticipation of this we have scheduled meetings with Sen. Dianne Feinstein and Sen. Barbara Boxer asking that they too oppose this bill. HR 1350, which purports to align IDEA with No Child Left Behind would actually gut our federal law protecting the rights of disabled students.

This year we have not produced a formal report because our committee decided that the set of recommendations we gave you last year continue to be vital. I have provided you with copies of that report together with embedded responses from the Superintendent and former Special Education Director Tim McNulty. Those recommendations, briefly restated, are:

- We continue to ask that the Board direct the staff to reconfigure the District hierarchy and place the Special Education Department under Education Services. This would foster collaboration among all educators in serving all children and should reduce redundancies and result in greater economy and efficiency.
- We continue to ask the Board to direct the staff to implement district-wide reading assessments by general education teachers beginning in kindergarten using current research-based testing. This would allow us to identify students in need of reading support early on and to meet their needs with effective remedial programs before they fall so far behind that they are referred to Special Education for costly assessments. Research shows that identifying struggling readers early and serving them before they fall too far behind has benefits in terms of savings and in being the right thing to do.
- We continue to ask the Board to direct staff to include all children in their neighborhood schools. Policies can have unintended consequences. We ask the Board to ask with each proposal placed before you how this will affect opportunities for students to attend their home schools – all students.

- We remind the Board to refer back to the independent assessment of Special Education in our district, which we refer to simply as “The Weintraub Report,” which recommended that there be more opportunities for the Special Education District Advisory Committee to work with the Board. Please confer with our members in this complex area and allow us to clarify and collaborate. We look forward to developing our new relationship with liaison Maria Leon-Vazquez.

At this time we have two very specific proposals that we believe could offer immediate and significant ongoing funding streams to the District.

First, the California State Regional Centers service children with developmental disorders, and many children in SMMUSD receive assistance from this system. The Centers have identified an under-utilized Medi-Cal waiver program that could bring school districts substantial federal dollars from the national Medicaid program. Most children who qualify for Medi-Cal currently do so as a consequence of low family income. However, the majority of children served by the Regional Centers can now qualify for Medi-Cal through an additional process known as deeming. This means that a child can qualify for Medi-Cal independent of their parent’s income.

Many of the services that districts are mandated to provide to special needs children can also be billed to Medi-Cal, including nursing care, speech and language, psychological counseling, occupational therapy, transportation, and others. Regional centers are unique. For every state dollar they get, they can generate 50 cents of a federal dollar. This gives Special Education a unique ability to generate federal dollars based on state dollars.

The second proposed funding source we would like to bring to your attention arises from recent legislative changes in the California State Medical Insurance Code. Within the past year the state has passed legislation to require coverage by private medical insurance of services for congenital developmental disorders. Several local districts have contracted consultants to develop partnerships with students’ private insurance companies to split the cost of certain services provided by the school. Locally Santa Barbara School District has already started to experiment with this approach. Our DAC can provide recommendations for consultants if this Board is interested in pursuing this possibility.

In closing we would like to say that we have had a strong working relationship with Special Education Director Cindy Atlas since she arrived last June and appreciate the fact that Ms. Atlas and her central office staff attend all of our meetings and are comfortable engaging in free-flowing and spirited discussions with parents and teachers to the benefit of all. We look forward to her upcoming formal presentations to the Financial Oversight Committee and to the Board of Education.

Thank you again for this opportunity to communicate our concerns and to offer our support.

**Annual Report of the District Advisory Committee on Special Education
To the Board of Education,
Santa Monica-Malibu Unified School District
May 2, 2002: Executive Summary**

Staff Responses and Superintendent's Recommendations: 6/17/02

The District Advisory Committee on Special Education seeks to advise the Board of Education in its understanding of how to best meet the needs of our diverse population of students. With a current membership of 12 parents, teachers and community members, the Committee has been successful in attracting the public to our monthly meetings and our special educational events and has also worked closely with Assistant Superintendent Tim McNulty and his staff.

Mr. McNulty models for our special educators the importance of compliance with the letter and also the spirit of the law. It is the hope of the Committee that Mr. McNulty's successor will provide the same strong leadership and support of parents as part of the team. Despite budget constraints resulting from the continued under-funding of IDEA, Mr. McNulty has provided teachers and specialists with new materials and training, including a research-based literacy program. He has produced a new Procedure Manual for staff and an IEP Survey that will be sent to parents of identified students before the end of the school year.

The full scope of Mr. McNulty's accomplishments cannot be adequately addressed in this report, but he has been fully supportive of, and a collaborator in, our Committee's efforts this year. We need to be mindful of the important role the Weintraub Report played in bringing Mr. McNulty to us and in defining the work that needed to be done. As Mr. McNulty leaves us, the Weintraub Report should serve as a guide to those areas where work still needs to be done.

Accomplishments

This year the Committee hosted TASK (Team Advocates for Special Kids) in offering a parent education meeting dedicated to "Understanding the Individual Education Plan." TASK will offer another such event for us in early June when the subject will be "Transitioning to Adult Life." In November we sponsored a question and answer session for parents with Superintendent John Deasy. Subsequent meetings featured a presentation by Ann Keller on the District's new *Language!* literacy program at which we were joined by newly appointed Assistant Superintendent Peggy Harris. In March, Prof. Ivor Weiner of Cal State University, Northridge led a lively discussion on inclusive education.

In an effort to reach out and engage in the larger community regarding our concerns, our Committee members have contributed to the Strategic Plan process and have interacted with members of the Tech DAC and the Childcare DAC. We have also been invited to report at the meetings of the PTA Council, which sends representatives to our monthly meetings. By June our Committee expects to have completed a Parent Handbook for distribution to all parents of students with IEPs.

At his first meeting with the Board of Education, Superintendent Deasy asked Board members to consider a question: "If we believe that all children can learn, what do we do when they don't?" The following recommendations are made in the hope that we can work together to serve the educational needs of our children and that, as Mr. McNulty has said, we are a community that truly believes "All means all."

Recommendations/Staff Responses/Superintendent's Recommendations

1. The Committee recommends that the Board of Education call for the reorganization of the District administrative hierarchy and place the Department of Special Education under Education Services when that department is complete. Under Ed Services, Special Education would cease to be seen as a place or a program separate from others but rather as a menu of services. The message inherent in this would be that all children are part of the District's educational program despite the need of some for special services. If we truly support efforts toward inclusion, breaking down of the wall between general and special education would provide benefits to all children.

Staff Response

Staff concurs with the recommendation of the Special Education Advisory Committee (SEDAC). During the 2001/02 school year the Superintendent began the process of reorganizing the administrative hierarchy of the central office. If the fiscal climate improves, the Education Services Department will not be fully staffed until sometime during the 2003/04 school year. At the time the Education Services Department becomes fully staffed, planning must take place to provide for the transfer of the Special Education Division from the Student Services Department to the Education Services Department for 2004/05 school year.

Superintendent's Recommendation:

Staff will discuss this recommendation in light of all emerging district plans and exigencies with possible implementation to be recommended in the future.

2. To help prevent the over-identification of students receiving Special Education services, the Committee recommends that the Board call for District-wide early assessments by general education teachers beginning in kindergarten. Instruments for early identification of students who can be expected to require support are readily available and are already in use in some schools. By identifying students in need before they fall too far behind their peers, students can be given support in general education, reducing requests for assessments.

Staff Response

The Special Education Department is currently in the planning process for early identification of pre-school age children requiring special services due to handicapping conditions. The Santa Monica-Malibu Pre School Collaborative is a unique linkage between Special Education and the services of Child Development Services, Head Start, Easter Seals and Santa Monica College. The vision and practices of the collaborative will support the early "child find" of children receiving services throughout the district.

The District must adopt a process for referral and identification of students who are unable to meet the California State standards. Teachers must be provided with training in recognizing the signs of student difficulty, cultural influences of behavior in the classroom, and appropriate accommodations and strategies for the curriculum prior to referral to special education. The

most common concerns stem from the inability to make appropriate progress in reading, handwriting and demonstrating behaviors in the classroom that match teacher expectations. Training should be provided to teachers in effective strategies that teach and support children who developmentally, culturally or differently abled.

Superintendent's Recommendation: Strategies to implement an early identification process are in the planning stages now. The recommendation is most welcome and staff looks forward to working on bringing the many aspects of the plan to fruition.

3. The Committee recommends that the Board encourages and supports all efforts toward and designed to achieve an inclusive educational environment in which students with disabilities can be successful in general education classrooms. This will also help to achieve the District to realize its goal of serving students currently in non-public schools in a more cost-effective manner. In this spirit we ask the Board to:

Staff Response

Staff concurs with the recommendation for the Board of Education to support all efforts toward achieving an inclusive instructional environment. Student Services Department administrators are currently working with individuals from the Lili Clair foundation to develop a "state of the art" staff development and certification program for instructional aides who provide inclusion support for students with severe disabilities. It is the goal of the program design team to begin training during the first semester of the 2002/03 school year.

Superintendent's Recommendation: Totally supports the on-going work with the Lili Claire Foundation and looks forward to initiating the training.

- A. Develop greater programmatic expertise within Special Education. Invest in training and affiliate with local institutions of higher learning to create opportunities for teachers and administrators to become familiar with current research and best practices in all areas.

Staff Response

Staff concurs with the recommendation. There are many ways in which professionals can be encouraged to expand their expertise of current and new issues, strategies and curriculum for students. The Special Education Division should encourage staff to affiliate with professional organizations and university contracts that can provide the most current information regarding effective research in strategies and methodologies to teach students with disabilities. The Special Education Division supports continuous training that is required to provide current programs and strategies for integrating students into inclusive schools. All teachers will benefit from specialized training regarding accommodations for students in their classrooms who are differently abled.

Superintendent's Recommendation: This is a core expectation.

- B. Require that all general education teachers be trained to teach students with special needs. We can begin by dedicating one in-service day a year to addressing issues that will facilitate inclusion.

Staff Response

The Special Education Department agrees that all general education teachers need to be trained to work with special needs students in their classrooms. The proposed one day in service can take place before school begins or as a buy back day during the school year. The in service must be coordinated with the Director of Staff Development who will oversee all staff development in the school district.

Superintendent's Recommendation: This recommendation is especially critical in the literacy and numeracy areas; consequently, dialogue for in-service plans will be started with the new Director of Professional Development and Leadership in as timely a manner as possible, following actual hiring to that position. It is anticipated that a portion of one in-service day will be designated for this purpose.

- C. Continue to support the important commitment the Board has already made to measures that will help the District retain and develop Instructional Aides, whose work is essential to supporting students and their teachers in general education classrooms. The Committee commends the Board for helping move Instructional Aids toward full-time positions instead of part-time. We ask that the Board direct Mr. McNulty to attend a Personnel Commission meeting for classified personnel to improve the process of screening and interviewing candidates. It is the belief of the Committee that there are unique aspects to Special Education that require a modified approach to the intake of applicants. This would not be meant to replace the current process but simply to modify it.

Staff Response

Staff concurs with the recommendation for the Board of Education to continue implementation of measures that help recruit, train and retain instructional aides. As a result of meeting with school site staff and Special Education Division staff the Director of Classified Personnel has made the Personnel Commission aware of the need to continually improve the recruitment, screening and interview process for instructional aide candidates. The Director of Classified Personnel, in collaboration with the Assistant Superintendent of Student Services, has invited members of the Special Education Advisory Committee to participate in the interview process.

Superintendent's Recommendation: Concur. On-going and increasing inclusion of all community stakeholders is imperative to successful programs.

- D. Place a cap on the class size of Special Day classes, which currently have no limit. This would be in keeping with the District's commitment to class size reduction in grades K-3 and potentially at the secondary level. Studies have shown that caps on SDC class size correlate to the quality of the programs. This would also reduce teacher burnout. We propose that class size for elementary Special Day classes are held to 11 or 12 students. The limit for Special Day – Intensive Services classes should be 8 or 9 students. And middle and high school SDC classes should have no more than 12 in a class.

Staff Response

Staff concurs with the recommendation. Because there is no statutory limit to the number of students assigned to a special day class (SDC), the Special Education Division staff have worked hard to keep SDC enrollment at the elementary at or below 12 students and SDC enrollment at the secondary at or below 16 or no more than 12 students per instructional period. In cases where it has not been possible to maintain a reasonable class size, it is the practice of the District to provide additional instructional aide support until the number of students in the class can be

reduced. It is important to know that enrollment numbers are not the sole determiner of what an appropriate class size is for any one particular class. The Special Education division administrators will work with Business division staff during the 2002/03 school year to develop budget standards that will provide criteria for the management of reasonable special day class size.

Superintendent's Recommendation: Staff will revisit the special day class size after the summer when the district's financial state will be clearer; there may be a policy recommendation following that discussion.

4. The Committee recommends that the Board express a District policy that encourages and supports the importance of the role parents play as members of the IEP team as was intended by Congress and is stated explicitly in the 1997 reauthorization of IDEA.

Staff Response

Staff believes collaboration between home and school and the involvement of other individuals with knowledge in the special education process is a basic building block to an effective program designed for the individual with exceptional needs.

It is the intent of the Santa Monica-Malibu Unified School District that parent involvement be evident in the special education process. In order for this to occur, it is important that the school staff not only notify the parent/guardian of rights specifically provided to the parent/guardians of students who are referred for or who currently receive special education services, but also to encourage the active participation of the parents in the special education process.

The Santa Monica-Malibu Unified School District's Special Education Procedure Manual identifies the importance of parent involvement in the special education process for the child with special needs. The decision and planning process should include the cooperative planning of the parents, educators, and when appropriate, the student.

Superintendent's Response: The intention of staff is to monitor this on-going inclusion effort with the assistance of DAC oversight and to assist in whatever way possible, as directed by the Board.

NOTE: Generally, due to the instability of state funding at this date (6/17/02) and its resultant effect on school programs and personnel, recommendations from all District Advisory Committees that had fiscal implications for the district were put on hold. Those that required no additional financial commitment were generally approved.

Dear Board Members:

Historically the District Bilingual Advisory Committee's (DBAC) main function has been to familiarize parents with our educational system, policies and procedure. It has also kept us informed with up to date information on current events in our district.

Our DBAC, a state mandated advisory committee, is evolving to fulfill the functions as outlined by the state. One of the main functions of the DBAC, as outlined by the state, is to make recommendations to the Board (in person or in writing) about programs for English Learners. Members of the group have been highly involved in presenting their concerns and recommendations about the budget crisis, and the achievement. Most importantly they have advocated for support services provided to English Learners.

Members of the DBAC recognize the district's efforts of promoting achievement amongst all students and closing the achievement gap. Some of the programs and services that we think that have been helpful are the following:

- After school intervention programs are helping students to develop literacy skills and complete homework assignments.
- Summer school for students that do not meet the grade level standards.
- Bilingual aides are great support to the students who are learning English.
- Community liaisons are an indispensable group that provides a voice to parents at the sites. They have also been instrumental in increasing parent involvement that is crucial to the success of students.
- Translation at meetings, letters and notices is great in helping us to know what is going on at our schools and the district.
- Phone call messages in Spanish, informing parents about important school events has been very helpful.
- Mailing progress and report cards (Santa Monica High School) helps us to monitor how our students are doing. We do not have to wait until it is too late to help our students.

We feel that all of the above programs and services need to continue and should be improved. We continue to be concerned about the achievement gap between students of color and white students. We have the following recommendations for:

School sites and the district:

- Urgent steps must be taken to help the high school students of color to be prepared for higher education.
- Nurses are essential for all students especially for low-income students. For some families they are the first and only source of medical attention that their children receive.
- More parent education classes on how to help our students to do better are needed and should be offered in morning and evenings.
- Training on leadership and participation in the schooling process is necessary for parents of English learners.
- More teacher assistants to help children are needed in classrooms where students are acquiring English.
- Counseling and intervention is needed for students who are dealing with issues that may prevent them from being successful in school.
- Schools with Title I need to have better programs that support student learning.

- Support for our students to participate in music programs, sports, accelerated classes in middle school is important so that when our children get to the high school they feel confident which will help them to be successful.
- We want our children to be recognized for achievement not for being absent.
- More students of color need to be encouraged to and supported to take Honors and AP classes and supported.

Teachers:

- More teacher communication with parents especially at the high school is essential so that we can support our children and the teachers.
- We want teachers that understand the needs of our students and who value the experiences that they bring.
- We need to work with teachers who are not helping our students. We do not want those teachers who are not doing their job to be instructing our, especially those students who are learning English or are at risk. The “best” teachers need to teach the students who are having the most difficulty in school.
- We want teachers to see our children as individuals that can succeed and go on to the university.
- Teachers and administrators need to be held accountable for the success or lack of academic success of all students including those who are learning English.

Policies:

- Changes to or implementation of policies directed by the School Board need to be analyzed in terms of equality for all students. It should specifically be analyzed as how it would affect students who are learning English and those who are not being successful.
- The redesign of the Samohi needs to be evaluated in terms of the success of our students. Is it closing the achievement gap?
- There needs to be a strategic plan to address the high percentage of low grades, taking into account that this is a problem that begins at the elementary level not at the high school.

We realize that currently our district is in a difficult financial time and that many of the decisions that the board has had to make will impact all students. Most of the recommendations that we are advocating for do not have financial implications. They simply require that you, the Board, have a commitment to our children that you show it by taking action to our recommendations. We understand that it is the state’s expectation that services and programs to the English learners be shaped by our recommendations to you. We look forward to continue to work for the good and success of all our students in the district, especially those students acquiring English.

ATTACHMENTS

IX COMMUNICATIONS:

- B. School Report - McKinley Elementary School
- D. S.E.I.U. Report
- H. Personnel Commission Report
- I. District Advisory Committee (DAC) Reports:
 - Special Education DAC
 - Bilingual District Advisory Committee

TO: BOARD OF EDUCATION

ACTION
05/15/03

FROM: JOHN E. DEASY

RE: APPROVAL OF MINUTES

RECOMMENDATION NO. A.1

It is recommended that the Board of Education approve the following Minutes:

None

MOTION MADE BY:

SECONDED BY:

STUDENT ADVISORY VOTE:

AYES:

NOES:

ABSTENTIONS:

TO: BOARD OF EDUCATION

ACTION/CONSENT

05/15/03

FROM: SUPERINTENDENT

RE: APPROVAL OF INDEPENDENT CONTRACTORS

RECOMMENDATION NO. A.2

It is recommended that Board of Education enter into an agreement with the following Independent Contractors. These contracts are included in the 2002/2003 budget.

Contractor/Contract Dates	Description	Site	Funding
Jewish Family Service of Santa Monica Sept. 4, 2002-June 20, 2003 Cost not to exceed: \$5,000	To provide individual, group, family counseling; classroom and PTA presentations; referrals; crisis intervention	JAMS	PTA gift 01- 90150-0-11100- 10000-5802-011-4110

MOTION MADE BY: Ms. Bloomfield

SECONDED BY: Dr. Escarce

STUDENT ADVISORY VOTE: -0-

AYES: All (7)

NOES: None (0)

ABSTENTIONS: None

TO: BOARD OF EDUCATION

ACTION/CONSENT

05/15/03

FROM: JOHN E. DEASY/ PEGGY HARRIS

RE: ADOPTION OF TRI-CITY SPECIAL EDUCATION LOCAL PLAN

RECOMMENDATION NO. A.3

It is recommended that the Board of Education adopt the Tri-City Selpa Local Plan for Special Education for 2000-01.

COMMENT: It is recommended that the Board of Education authorize the Local Plan for Special Education and the Local Education Agency Assurance Statement for 2000-01. The reason for the delay in approval of the Local Plan for each district was the need to have common rubrics. California Department of Education (CDE) required each SELPA to rewrite their Local Plan to follow specific criteria adopted by CDE.

MOTION MADE BY: Ms. Bloomfield

SECONDED BY: Dr. Escarce

STUDENT ADVISORY VOTE: -0-

AYES: All (7)

NOES: None (0)

ABSTENTIONS: None

TO: BOARD OF EDUCATION

ACTION/CONSENT

05/15/03

FROM: SUPERINTENDENT

RE: APPROVAL OF THE LOCAL EDUCATION AGENCY PLAN (LEAP) AS
REQUIRED BY THE NO CHILD LEFT BEHIND ACT OF 2001 (NCLB)

RECOMMENDATION NO. A.4

It is recommended that the Board of Education approve the Local Education Agency Plan (LEAP) as required by the No Child Left Behind Act of 2001 (NCLB). This plan is a requirement of the legislation to receive federal funding for NCLB.

The LEAP serves multiple purposes:

1. Five-year operational plan from July 1, 2003 through June 30, 2008
2. Annual update of LEA program implementation
3. Guide to implement federal and state-funded programs
4. Blueprint for students to achieve the state content standards
5. Single, coordinated, and comprehensive plan describing services for all students
6. Basis for a continuous cycle of assessment, parent and community involvement, planning, implementation, monitoring, and evaluation
7. Summary of all existing federal and state plans that can establish a focus for raising academic performance for all students.

The plan is due to the California Department of Education by June 1, 2003.

MOTION MADE BY: Ms. Bloomfield

SECONDED BY: Dr. Escarce

STUDENT ADVISORY VOTE: -0-

AYES: All (7)

NOES: None (0)

ABSTENTIONS: None

TO: BOARD OF EDUCATION

ACTION/CONSENT

05/15/03

FROM: SUPERINTENDENT / JUDY ABDO

RE: COORDINATED COMPLIANCE REVIEW FOR CHILD DEVELOPMENT
SERVICES

RECOMMENDATION NO. A.5

It is recommended that the Board of Education review and approve the Coordinated Compliance Review for the Child Development Services Department.

COMMENT: A copy of the Coordinated Compliance Review was provided to member of the Board of Education. A copy is on file in the Child Development Services Department.

MOTION MADE BY: Ms. Bloomfield

SECONDED BY: Dr. Escarce

STUDENT ADVISORY VOTE: -0-

AYES: All (7)

NOES: None (0)

ABSTENTIONS: None

TO: BOARD OF EDUCATION

ACTION/CONSENT

05/15/03

FROM: JOHN E. DEASY/KENNETH R. BAILEY

RE:

ACCEPTANCE OF GIFTS - 2002-03

RECOMMENDATION NO. A.6

It is recommended that the Board of Education accept, with gratitude, checks and gifts totaling \$53,037.18 presented to the Santa Monica-Malibu Unified School District.

It is further recommended that the Fiscal/Business Services Office, in accordance with Educational Code §42602, be authorized to increase the 2002-2003 income and appropriations by \$50,700.18, as described on the attached listing.

COMMENT: The value of all non-cash gifts has been determined by the donors.

Also attached for informational purposes is a report itemizing Cumulative Totals of Gifts and Donations for Fiscal Year 2002-2003.

AGENDA

NOTE: The list of gifts is available on the District's website, www.smmusd.org, as a pdf file; to view the gift report:

- 1) go to www.smmusd.org
- 2) click on "Board Meetings"
- 3) scroll to the date for this meeting
- 4) click on 5-15gif.pdf

School/Site Account Number	Gift Amount	In-kind Value	Donor	Purpose
JAMS	\$ 5,098.00		John Adams PTSA	Counseling Services/Postage-Hepatitis Letters
01-90120-0-00000-00000-8699-011-0000	\$ 618.81		Coca-Cola Enterprises Bottling Co.	P.E. Supplies
	\$ 100.00		LAVAC Enterprises, Inc.	AVID Program Supplies
	\$ 100.00		Commonwealth Energy Corp.	Instructional Supplies
	\$ 63.28		Chris Iwasa	Math Supplies
Adult Education				
11-90120-0-00000-00000-8699-090-0000				
Alternative (SMASH)				
01-90120-0-00000-00000-8699-009-0000				
Cabrillo				
01-90120-0-00000-00000-8699-017-0000				
PTA Reim. - Resource #90150	\$ 30,000.00		Cabrillo PTA	Instructional Aides
CDS				
12-90120-0-00000-00000-8699-090-0000				
Edison				
01-90120-0-00000-00000-8699-001-0000				
PTA Reim. - Resource #90150				
Franklin				
01-90120-0-00000-00000-8699-002-0000				
PTA Reim. - Resource #90150				
Grant				
01-90120-0-00000-00000-8699-003-0000				
Lincoln	\$ 1,513.56		Lincoln PTA	Teacher Hrly & Clerical Hrly for Afterschool Library
01-90120-0-00000-00000-8699-012-0000				
Malibu High School	\$ 10,000.00		Malibu PTSA	Teacher Subs/Genl & Grad Supplies/Postage
01-90120-0-00000-00000-8699-010-0000	\$ 500.00		Westside Regional Center	Non-Capitalized Equipment for Special Education
	\$ 78.31		Verizon	General Supplies & Materials
McKinley	\$ 1,878.00		Various	Independent Contractor (Shutters Comedy Night)
01-90120-0-00000-00000-8699-004-0000				

School/Site	Gift Amount	In-kind Value	Donor	Purpose
Account Number				
Muir				
01-90120-0-00000-00000-8699-005-0000				
Olympic HS	\$ 100.86		Coca-Cola Enterprises Bottling Co.	General Supplies & Materials
01-90120-0-00000-00000-8699-014-0000				
Rogers				
01-90120-0-00000-00000-8699-006-0000				
PTA Reim. - Resource #90150				
Roosevelt				
01-90120-0-00000-00000-8699-007-0000				
PTA Reim. - Resource #90150				
Samohl	\$ 249.36		Coca-Cola Enterprises Bottling Co.	P.E. Supplies
01-90120-0-00000-00000-8699-015-0000		\$ 2,337.00	Joan Vaupen	Multi-Media Equipment for Digital Design Class
Barnum Hall				
01-91150-0-00000-00000-8699-015-0000				
Pt. Dume Marine Science				
01-90120-0-00000-00000-8699-019-0000				
PTA Reim. - Resource #90150				
Webster				
01-90120-0-00000-00000-8699-008-0000				
PTA Reim. - Resource #90150				
Others:				
Superintendent's Office				
01-90120-0-00000-00000-8699-020-0000				
Educational Services	\$ 400.00		Unbroken Chain Festival Productions	Art Supplies
01-90120-0-00000-00000-8699-030-0000				
Food & Nutrition Services				
01-90120-0-00000-0000-8699-057-0000				
Fiscal Services				
01-90120-0-00000-0000-8699-051-0000				
TOTAL	\$ 50,700.18	\$ 2,337.00		

School/Site Account Number	Y-T-D Adjusted Gift Total	Current Gift Amount	Cumulative Gift Amount	Y-T-D In-Kind Value	Current In-Kind Value	Cumulative In-Kind Value
JAMS 01-90120-0-00000-00000-8699-011-0000	\$ 33,349.42	\$ 5,980.09	\$ 39,329.51	\$ 2,345.00	\$ -	\$ 2,345.00
Adult Education 11-90120-0-00000-00000-8699-090-0000	\$ 1,130.00	\$ -	\$ 1,130.00	\$ 600.00	\$ -	\$ 600.00
Alternative (SMASH) 01-90120-0-00000-00000-8699-009-0000	\$ 17,640.00	\$ -	\$ 17,640.00	\$ 250.00	\$ -	\$ 250.00
Cabrillo 01-90120-0-00000-00000-8699-017-0000	\$ 22,513.41	\$ -	\$ 22,513.41	\$ 4,406.11	\$ -	\$ 4,406.11
PTA Reim. - Resource #90150	\$ 64,259.41	\$ 30,000.00	\$ 94,259.41	\$ 1,245.96	\$ -	\$ -
CDS 12-90120-0-00000-00000-8699-090-0000	\$ -	\$ -	\$ -	\$ 500.00	\$ -	\$ 500.00
Edison 01-90120-0-00000-00000-8699-001-0000	\$ 2,133.28	\$ -	\$ 2,133.28	\$ 50.00	\$ -	\$ 50.00
PTA Reim. - Resource #90150	\$ 12,466.00	\$ -	\$ 12,466.00			
Franklin 01-90120-0-00000-00000-8699-002-0000	\$ 3,851.31	\$ -	\$ 3,851.31	\$ -	\$ -	\$ -
PTA Reim. - Resource #90150	\$ 50,000.00	\$ -	\$ 50,000.00			
Grant 01-90120-0-00000-00000-8699-003-0000	\$ 96,375.34	\$ -	\$ 96,375.34	\$ 6,655.95	\$ -	\$ 6,655.95
Lincoln 01-90120-0-00000-00000-8699-012-0000	\$ 52,532.19	\$ 1,513.56	\$ 54,045.75	\$ -	\$ -	\$ -
Malibu High School 01-90120-0-00000-00000-8699-010-0000	\$ 55,054.79	\$ 10,578.31	\$ 65,633.10	\$ 8,035.00	\$ -	\$ 8,035.00
McKinley 01-90120-0-00000-00000-8699-004-0000	\$ 18,739.73	\$ 1,878.00	\$ 20,617.73	\$ -	\$ -	\$ -
Muir 01-90120-0-00000-00000-8699-005-0000	\$ 30,059.26	\$ -	\$ 30,059.26	\$ -	\$ -	\$ -
Olympic HS 01-90120-0-00000-00000-8699-014-0000	\$ 7,317.14	\$ 100.86	\$ 7,418.00	\$ -	\$ -	\$ -

School/Site	Y-T-D Adjusted Gift Total	Current Gift Amount	Cumulative Gift Amount	Previous In-Kind Value	Current In-Kind Value	Cumulative In-Kind Value
Rogers	\$ 39,710.00	\$ -	\$ 39,710.00	\$ -	\$ -	\$ -
01-90120-0-00000-00000-8699-006-0000						
PTA Reim. - Resource #90150	\$ 25,414.10	\$ -	\$ 25,414.10			
Roosevelt	\$ 49,044.58	\$ -	\$ 49,044.58	\$ 2,396.00	\$ -	\$ 2,396.00
01-90120-0-00000-00000-8699-007-0000						
PTA Reim. - Resource #90150	\$ 203,920.00	\$ -	\$ 203,920.00			
Samohl	\$ 69,096.85	\$ 249.36	\$ 69,346.21	\$ 2,800.00	\$ 2,337.00	\$ 5,137.00
01-90120-0-00000-00000-8699-015-0000	[See Below for Barnum Hall]					
Pt. Dume Marine Science	\$ 74,067.33	\$ -	\$ 74,067.33	\$ 1,000.00	\$ -	\$ 1,000.00
01-90120-0-00000-00000-8699-019-0000						
PTA Reim. - Resource #90150	\$ 263,065.94	\$ -	\$ 263,065.94			
Webster	\$ -	\$ -	\$ -	\$ -	\$ -	\$ -
01-90120-0-00000-00000-8699-008-0000						
PTA Reim. - Resource #90150	\$ 100,000.00	\$ -	\$ 100,000.00			
All Others:						
Superintendent's Office	\$ 13,100.00	\$ -	\$ 13,100.00	\$ -	\$ -	\$ -
01-90120-0-00000-00000-8699-020-0000						
Educational Services	\$ 54,415.97	\$ 400.00	\$ 54,815.97	\$ 1,375.00	\$ -	\$ 1,375.00
01-90120-0-00000-00000-8699-030-0000						
Student and Family Support Services	\$ 12,800.00	\$ -	\$ 12,800.00	\$ -	\$ -	\$ -
01-90120-0-00000-00000-8699-041-0000						
Food & Nutrition Services	\$ -	\$ -	\$ -	\$ 1,082.99	\$ -	\$ 1,082.99
13-90120-0-00000-00000-8699-057-0000						
Fiscal Services	\$ -	\$ -	\$ -	\$ 27.00	\$ -	\$ 27.00
01-90120-0-00000-00000-8699-051-0000						
TOTAL GIFTS	\$ 1,372,056.05	\$ 50,700.18	\$ 1,422,756.23	\$ 32,769.01	\$ 2,337.00	\$ 33,860.05
BARNUM HALL - Current Year	Y-T-D Gifts	Current Gifts	Cumulative Gifts	Prev. In-Kind Gifts	Current In-Kind Gifts	Cumulative In-Kind
01-91150-0-00000-00000-8699-015-0000	\$ 14,290.00	\$ -	\$ 14,290.00	Organ (Belt) (Est.)		\$ 250,000.00
Previous Years' Gifts				Organ (Dollinger)		350,000.00
2001-02	\$ 66,200.00			Dollinger Organ donated at 4/11/02 Board Mtg.		
2000-01	\$ 137,863.00			(Item A.21) to Tucson Fox Foundation		
1999-00	\$ 175,700.00				n/a	\$ (350,000.00)
1998-99	\$ 10,945.00				n/a	
1997-98	\$ 26,645.00					\$ 250,000.00
TOTAL CASH GIFTS FOR BARNUM HALL	\$ 417,353.00					
Total Cash Gifts for District, incl. Barnum Hall:		\$ 50,700.18				

MOTION MADE BY: Ms. Bloomfield
SECONDED BY: Dr. Escarce

STUDENT ADVISORY VOTE: -0-
AYES: All (7)
NOES: None (0)
ABSTENTIONS: None

TO:

BOARD OF EDUCATION

ACTION/CONSENT

05/15/03

FROM:

SUPERINTENDENT

RE:

APPROVAL OF PURCHASE ORDERS

RECOMMENDATION NO. A.7

It is recommended that the Board of Education approve the following Purchase Orders and Changed Purchase Orders from April 11, 2003 through May 7, 2003 for fiscal year 2002/03.

MOTION MADE BY: Ms. Bloomfield

SECONDED BY: Dr. Escarce

STUDENT ADVISORY VOTE: -0-

AYES: All (7)

PURCHASE ORDERS TO BE APPROVED AT THE BOARD MEETING OF MAY 15, 2003

U-GENERAL FUND,UNRESTRICTED R-GENERAL FUND,RESTRICTED A-ADULT ED CD-CHILD DEVELOPMENT F-CAFETERIA
 SF-SPECIAL FINANCING (FLEX) EX-PROPS and X U-DEVELOPER FEES SR-SPECIAL RESERVE CAPITAL
 SM-STATE MODERNIZATION

PO NO.	VENDOR	DESCRIPTION	LOCATION	AMOUNT	
*** NEW PURCHASE ORDERS ***					
305665	ADTRAN INC	Equipment Repair	INFORMATION SERVICES	25.00	U
305655	ADVANTIDGE ID SOLUTIONS	SUPPLIES/PRINTING BUS PASSES	TRANSPORTATION	227.33	R
305698	AIRBORNE EXPRESS	SPECIAL DELIVERY CHARGE	BOE/SUPERINTENDENT	16.26	U
305686	AMETRON ELECTRONICS	A.V.SCREEN RENTAL	STUDENT SERVICES	189.44	
305633	APPLE COMPUTER CORP	COMPUTERS FOR CLASSROOMS	WILL ROGERS ELEMENTARY SCHOOL	10,547.88	
305654	APPLE COMPUTER CORP	REPAIR INVOICES	INFORMATION SERVICES	900.00	U
305666	APPLE COMPUTER CORP	Repair	INFORMATION SERVICES	96.99	U
305679	APPLE COMPUTER CORP	REPAIRS FOR MACS	INFORMATION SERVICES	500.00	U
305725	BASELICE & ASSOCIATES INC	VOTER SURVEY	BOE/SUPERINTENDENT	6,200.00	U
305724	BAUDVILLE INC	AWARD CERTIFICATES/GIFT	JOHN ADAMS MIDDLE SCHOOL	112.05	
305706	BAY CITIES APPLIANCE	REFRIGERATOR	CHILD DEVELOPMENT CENTER	543.52	CD
305402	BMI EDUCATIONAL SERVICES	books on tape for library	GRANT ELEMENTARY SCHOOL	325.96	
305742	CABLE IN THE CLASSROOM	MAGAZIN SUBSCRIPTION	CABRILLO ELEMENTARY SCHOOL	28.09	
305703	CAL STATE DEPT OF JUSTICE	FINGERPRINTING	PERSONNEL COMMISSION	2,280.00	U
305701	CALIFORNIA NEWSPAPER SERVICE	PUBLIC NOTICE-2003/04 BUDGET	BUSINESS SERVICES	150.00	U
305637	CANNELL, STEVEN	SUPPLIES FOR STEVE CANNELL	CURRICULUM AND IMC	71.36	U
305536	CANON BUSINESS SOLUTIONS	COPIER TONER/ADMIN	JOHN ADAMS MIDDLE SCHOOL	136.40	U
305759	CANON BUSINESS SOLUTIONS	maintenance contract	FRANKLIN ELEMENTARY SCHOOL	475.00	
305638	CARSON-DELLOSA PUBLISHING CO	Writing Assessment Materials	ROOSEVELT ELEMENTARY SCHOOL	445.99	
305708	CASEY, JACK	REIMBURSEMENT	OLYMPIC CONTINUATION SCHOOL	80.00	
305663	CCS	REPAIR PARTS-DAYNL	PURCHASING/WAREHOUSE	170.31	U
305590	CCS PRESENTATION SYSTEMS	GENERAL SUPPLIES & MATERIALS	BOE/SUPERINTENDENT	31.65	U
305808	CENTURY SOFTWARE/R & K COMPUTER	Computer Parts	INFORMATION SERVICES	300.00	U
305684	CITIZENS MEDICAL GROUP	PRE-EMPLOYMENT PHYSICALS	PERSONNEL COMMISSION	495.00	U
305745	CITY OF SANTA MONICA FINANCE	GROUNDS DUMP FEES	GROUNDS MAINTENANCE	858.44	U
305707	COMPUTER DISK SERVICE INC	Floppy Drive Repairs	INFORMATION SERVICES	300.00	U
305731	CURRICULUM ASSOC INC	Literature Materials	ROOSEVELT ELEMENTARY SCHOOL	49.26	
305662	DAY-TIMERS INC	DAY-TIMER FOR KEN BAILEY	BUSINESS SERVICES	28.71	U
305784	DISCOUNT SCHOOL SUPPLY	INSTRUCTIONAL SUPPLIES	CHILD DEVELOPMENT CENTER	123.62	CD
305128	DURHAM TRANSPORTATION	BUS TRANSPORTATION	SANTA MONICA HIGH SCHOOL	527.75	U
305721	DURHAM TRANSPORTATION	DISNEYLAND TRANSPORTATION	CURRICULUM AND IMC	2,014.70	
305648	E. SAM JONES DISTRIBUTOR INC.	LAMPS	ROOSEVELT ELEMENTARY SCHOOL	73.91	
305741	EST SERVICE	OPEN ORDER-FIRE ALARM SYSTEM	FACILITY MAINTENANCE	1,000.00	
305657	FEDEX	PHP RESULTS - MAILED	HEALTH SERVICES	14.75	
305470	FIRST STUDENT	TRANSPORTATION-ASTRO CAMP	JOHN ADAMS MIDDLE SCHOOL	930.00	U
305418	FOLLETT LIBRARY BOOK CO	Library books	GRANT ELEMENTARY SCHOOL	523.25	
305605	FOLLETT LIBRARY BOOK CO	ADOPTED BOOKS	WILL ROGERS ELEMENTARY SCHOOL	5,000.00	R
305755	FOLLETT LIBRARY BOOK CO	Library Book Order	WILL ROGERS ELEMENTARY SCHOOL	235.08	
305660	FOUR SEASONS LANDSCAPING (DBA)	GROUNDS CONTRACT TREE TRIMMING	GROUNDS MAINTENANCE	1,975.00	U
305594	GALE SUPPLY CO	CUSTODIAL SUPPLIES	MCKINLEY ELEMENTARY SCHOOL	363.99	U
305611	GALE SUPPLY CO	SUPPLIES	JOHN MUIR ELEMENTARY SCHOOL	641.16	U
305612	GALE SUPPLY CO	CUSTODIAL SUPPLIES	WEBSTER ELEMENTARY SCHOOL	377.36	U
305746	GALE SUPPLY CO	OPEN ORDER CUSTODIAL SUPPLIES	FACILITY OPERATIONS	1,500.00	U
305696	GATEWAY 2000 MAJOR ACCOUNTS	COMPUTER EQUIPMENT	BOE/SUPERINTENDENT	1,550.14	U
305750	GATEWAY 2000 MAJOR ACCOUNTS	NON-INSTRUCTIONAL/COMPUTERS	CHILD DEVELOPMENT CENTER	5,598.69	CD
305812	GATEWAY 2000 MAJOR ACCOUNTS	COMPUTER	CHILD DEVELOPMENT CENTER	6,793.77	CD
305537	GREG LARSON SPORTS	AWARD MEDALS/ASB	JOHN ADAMS MIDDLE SCHOOL	83.01	
305606	HOUGHTON MIFFLIN	PRIVATE SCHOOL ORDER	STATE AND FEDERAL PROJECTS	695.00	R
305681	IKON OFFICE SOLUTIONS	GENERAL SUPPLIES & MATERIALS	ADULT EDUCATION CENTER	88.12	A

PURCHASE ORDERS TO BE APPROVED AT THE BOARD MEETING OF MAY 15, 2003

U-GENERAL FUND, UNRESTRICTED R-GENERAL FUND, RESTRICTED A-ADULT ED CD-CHILD DEVELOPMENT F-CAFETERIA
 SF-SPECIAL FINANCING (FLEX) EX-PROP ES and X D-DEVELOPER FEES SR-SPECIAL RESERVE CAPITAL
 SM-STATE MODERNIZATION

PO NO.	VENDOR	DESCRIPTION	LOCATION	AMOUNT	
305618	IMED	OVERHEAD PROJECTOS/CARTS	ADULT EDUCATION CENTER	683.68	A
305619	IMED	AUDIO VISUAL MATERIALS	ADULT EDUCATION CENTER	2,223.82	A
305752	IMED	NON-INSTRUCTIONAL/CASSETTE	CHILD DEVELOPMENT CENTER	471.97	
305790	JOHN LEHNE & SONS	OPEN ORDER-EQUIPMENT REPAIR	FACILITY MAINTENANCE	600.00	
305716	JOSTENS/DIPLOMAS	DIPLOMAS	OLYMPIC CONTINUATION SCHOOL	118.17	
305760	LABOV, LAUREN	OTHER OPERATING EXPENSE	CURRICULUM AND IMC	500.00	
305643	LACOE/BRENDA GUIDRY	PHYSICAL FITNESS TESTING	CURRICULUM AND IMC	2,588.26	U
305081	LAKESHORE CURRICULUM	CLASSROOM SUPPORT SUPPLIES	WILL ROGERS ELEMENTARY SCHOOL	564.49	U
305088	LAKESHORE CURRICULUM	CLASSROOM SUPPORT MATERIALS	WILL ROGERS ELEMENTARY SCHOOL	518.19	U
305315	LAKESHORE CURRICULUM	CLASSROOM SUPPORT SUPPLIES	WILL ROGERS ELEMENTARY SCHOOL	301.65	R
305680	MAC SOLUTIONS	COMPUTER REPAIR PARTS	INFORMATION SERVICES	1,000.00	U
305748	MEDICAL PURCHASING CORP.	HEALTH CHAMPIONS SUPPLIES	HEALTH SERVICES	27.01	
305749	MEDICAL PURCHASING CORP.	HEALTH CHAMPIONS SUPPLIES	HEALTH SERVICES	44.62	
305598	NASCO WEST - MODESTO	FOOD REPLICAS FOR NPA GRANT	FOOD SERVICES	112.47	F
305614	NASCO WEST - MODESTO	BASIC BUDDY - CPR MANNEQUINS	HEALTH SERVICES	527.55	R
305678	NEW READERS PRESS	TEXTBOOKS / GEN. SUPP & MAT.	ADULT EDUCATION CENTER	740.05	A
305809	OCLC FOREST PRESS	Late Fee-DYNIX	INFORMATION SERVICES	44.92	
305734	ORKIN EXTERMINATORS	PEST CONTROL IN MUIR CAFETERIA	FOOD SERVICES	75.00	F
305159	PACIFIC RIM PRINTERS*MAILERS	PRINT ATHLETIC SPRING SCHEDULE	SANTA MONICA HIGH SCHOOL	216.50	U
305674	PEARSON EDUCATION #3	GENERAL SUPPLIES & MATERIALS	ADULT EDUCATION CENTER	249.82	A
305677	PEARSON EDUCATION #3	TEXTBOOKS/GEN SUPP. & MAT.	ADULT EDUCATION CENTER	439.51	A
305608	PIN GALLERY BY S.G.G.	MOTIVATIONAL PRINTS	FOOD SERVICES	58.41	F
305587	PREFERRED PAVING COMPANY INC	ROOSEVELT ASPHALT PAVING	ROOSEVELT ELEMENTARY SCHOOL	9,580.00	SM
305727	RAFFA, DVIDA	Ceramics Supplies	ROOSEVELT ELEMENTARY SCHOOL	884.95	
305710	REDWOOD PRESS	PRINT HEADSTART ENROLL. FORMS	CHILD DEVELOPMENT CENTER	2,577.43	CD
305776	REES ELECTRONICS	Fax cartridge	TRANSPORTATION	136.65	R
305632	REGISTRAR-RECORDER/COUNTY CLK	NOVEMBER ELECTION COSTS	BOE/SUPERINTENDENT	56,071.47	
305668	REVOLVING CASH FUND	STUDENT THEATER TICKETS	STUDENT SERVICES	250.00	
305697	ROTARY CLUB OF SANTA MONICA	ROTARY DUES	BOE/SUPERINTENDENT	406.00	U
305639	SANSCHAGRIN, MARC	REIMB FOR NATL BD CERT TEACHER	STATE AND FEDERAL PROJECTS	1,725.00	R
305528	SANTA MONICA MUN BUS LINES	BUS CARDS FOR RESALE	SAMOH1 STUDENT STORE	1,000.00	U
305635	SANTA MONICA MUN BUS LINES	Field Trip	ROOSEVELT ELEMENTARY SCHOOL	264.00	
305546	SAVIN CORP (FORMER GESTETNER)	DUPLICATING SUPPLIES	GRANT ELEMENTARY SCHOOL	283.80	
305644	SCHOOL SPECIALTY INC	READING/WRITING CENTER	WILL ROGERS ELEMENTARY SCHOOL	215.42	U
305645	SCHOOL SPECIALTY INC	CLASSROOM SUPPORT MATERIALS	WILL ROGERS ELEMENTARY SCHOOL	182.83	R
305647	SCHOOL SPECIALTY INC	W9 ENVELOPES	PURCHASING/WAREHOUSE	247.35	U
305798	SCHOOL SPECIALTY INC	CLASSROOM SUPPLIES	GRANT ELEMENTARY SCHOOL	91.11	
305722	SEHI COMPUTER PRODUCTS	COPIER TONER/GIFT	JOHN ADAMS MIDDLE SCHOOL	120.37	
305765	SELIG CHEMICAL	PLUMBING SUPPLIES	FACILITY MAINTENANCE	237.69	
305685	SJEMS INC/CENTER FOR HEALTH	PHYSICALS	PERSONNEL COMMISSION	165.00	U
305540	SLISS, JOHN J	MILEAGE	PERSONNEL COMMISSION	44.53	U
305609	SMART APPLE U.S.	BOOKS PRIVATE SCHOOL	STATE AND FEDERAL PROJECTS	452.43	R
305739	SMITH, JAMES E.	PIANO TUNING/STAIRWAY	CURRICULUM AND IMC	75.00	
305682	SOUTHWEST SCHOOL SUPPLY	GENERAL SUPPLIES & MATERIALS	ADULT EDUCATION CENTER	141.80	A
305766	SOUTHWEST SCHOOL SUPPLY	CLASSROOM SUPPLIES/HERRERA	GRANT ELEMENTARY SCHOOL	56.10	
305769	SOUTHWEST SCHOOL SUPPLY	CLASSROOM SUPPLIES/TAKASHIMA	GRANT ELEMENTARY SCHOOL	118.28	
305779	SOUTHWEST SCHOOL SUPPLY	CLASSROOM SUPPLIES/CHEMEL	GRANT ELEMENTARY SCHOOL	251.68	
305690	SPEEDO ELECTRIC CO	TACH CHARTS/REG. ED. TRANSP.	TRANSPORTATION	123.56	R
305610	SRA/MCBRAW HILL	BOOKS PRIVATE SCHOOL	STATE AND FEDERAL PROJECTS	694.35	R
305733	STRESS LESS ENVIRONMENTAL LLC	OPEN ORDER-WASTE MAT.DISPOSAL	FACILITY MAINTENANCE	350.00	
305621	SUPER DUPER PUBLICATIONS	CLASSROOM SUPPLIES	CABRILLO ELEMENTARY SCHOOL	377.36	

SANTA MONICA-MALIBU UNIFIED SCHOOL DISTRICT

PAGE 3

PURCHASE ORDERS TO BE APPROVED AT THE BOARD MEETING OF MAY 15, 2003

U-GENERAL FUND,UNRESTRICTED R-GENERAL FUND,RESTRICTED A-ADULT ED CD-CHILD DEVELOPMENT F-CAFETERIA
SF-SPECIAL FINANCING (FLEX) EX-PROP ES and X D-DEVELOPER FEES SP-SPECIAL RESERVE CAPITAL
SM-STATE MODERNIZATION

PO NO.	VENDOR	DESCRIPTION	LOCATION	AMOUNT	
305656	SWEET LIFE ENTERPRISES	COOKIE DOUGH	FOOD SERVICES	3,000.00	F
305669	SWRCB ACCOUNTING OFFICE	ANNUAL STORM WATER PERMIT	FACILITY MAINTENANCE	700.00	U
305744	TARGET SPECIALTY PRODUCTS	GROUNDS SUPPLIES PEST CONTROL	GROUNDS MAINTENANCE	569.18	U
305629	TOYS-R-US	Car Seats/Special Ed. Transp.	TRANSPORTATION	200.00	R
305242	U S OFFICE PROD/CORPORATE EXP	CLASSROOM SUPPORT SUPPLIES	WILL ROGERS ELEMENTARY SCHOOL	134.86	R
305496	U S OFFICE PROD/CORPORATE EXP	TONER FOR SP ED CLASSES/SP ED	JOHN ADAMS MIDDLE SCHOOL	109.33	R
305704	U S OFFICE PROD/CORPORATE EXP	INST SUP/SPECIAL ED	JOHN ADAMS MIDDLE SCHOOL	89.90	R
305607	UNITED PARCEL SERVICE	SHIPPING FOR PROJECTOR REPAIR	CURRICULUM AND IMC	21.33	U
305597	VICTOR'S MARKET CO INC	FISH PRODUCE FOR VIKES CAFE	FOOD SERVICES	192.76	F
305090	VIRCO MFG CORP	KIDNEY TABLE	WILL ROGERS ELEMENTARY SCHOOL	159.32	U
305640	WELFORD,MICHELLE S.	REIMB NATL BD CERT TEACHERS	STATE AND FEDERAL PROJECTS	1,300.00	R
305620	WOLVERINE SPORTS	P.E. EQUIPMENT	CABRILLO ELEMENTARY SCHOOL	93.10	
305624	WORLD STRIDES	field trip scholarships	PT DUME ELEMENTARY SCHOOL	1,681.00	
				** NEW PURCHASE ORDERS TOTAL:	153,086.17

** FACILITY IMPROVEMENTS: PROP X/STATE MODERNIZATON/NEW CONSTRUCTION/DEVELOPER FEES **

305659	PRINTWORKS TWENTY-ONE	SCAN FORMS	CURRICULUM AND IMC	787.52	
305738	SCHEER,SUSAN	REIMBURSEMENT-LTC	CURRICULUM AND IMC	54.42	
				** FACILITY IMPROVEMENTS: PROP X/STATE MODERNIZATON/NEW CONSTRUCTION/DEVELOPER FEES TOTAL:	841.94

NOES: None (0)
ABSTENTIONS: None

TO: BOARD OF EDUCATION ACTION/CONSENT
05/15/03
FROM: SUPERINTENDENT/KENNETH BAILEY/BETH CONNORS
RE: ATTENDANCE CALENDAR FOR 2003/2004

RECOMMENDATION NO. A.8

It is recommended that the Board of Education adopt the attached Attendance Calendar for the 2003/2004 school year.

COMMENTS: Ed Code 73201 allows the district to build an attendance school calendar to maximize ADA by strategically positioning the start and end of the P2 Apportionment period. Historically, our secondary enrollment drops from the seventh month onward. Since P2 is computed as the average attendance from the beginning of the school year through the last full school month ending on or before April 15, the earlier we count the ADA the more apportionment we will generate. This can be accomplished by excluding the winter break and filing P2 through the 7th school month rather than the 8th school month as is currently depicted in the regular school calendar.

This will not, in any way, change the current adopted school calendar. It is for attendance accounting purposes only.

MOTION MADE BY: Ms. Bloomfield
SECONDED BY: Dr. Escarce

STUDENT ADVISORY VOTE: -0-
AYES: All (7)
NOES: None (0)

SANTA MONICA MALIBU UNIFIED SCHOOL DISTRICT
2003/04 ATTENDANCE CALENDAR

Attend. Month	FIRST WEEK					SECOND WEEK					THIRD WEEK					FORTH WEEK					Elem. Days	Second Days
	Mon	Tue	Wed	Thu	Fri	Mon	Tue	Wed	Thu	Fri	Mon	Tue	Wed	Thu	Fri	Mon	Tue	Wed	Thu	Fri		
1ST	1	2	3	4	5	8	9	10	11	12	15	16	17	18	19	22	23	24	25	26	18	18
2ND	29	30	1	2	3	6	7	8	9	10	13	14	15	16	17	20	21	22	23	24	19	19
3RD	27	28	29	30	31	3	4	5	6	7	10	11	12	13	14	17	18	19	20	21	18	19
4TH	24	25	26	27	28	1	2	3	4	5	8	9	10	11	12	15	16	17	18	19	18	18
5TH	5	6	7	8	9	12	13	14	15	16	19	20	21	22	23	26	27	28	29	30	19	18
6TH	2	3	4	5	6	9	10	11	12	13	16	17	18	19	20	23	24	25	26	27	19	19
7TH	1	2	3	4	5	8	9	10	11	12	15	16	17	18	19	22	23	24	25	26	20	20
8TH	29	30	31	1	2	5	6	7	8	9	12	13	14	15	16	19	20	21	22	23	10	10
9TH	26	27	28	29	30	3	4	5	6	7	10	11	12	13	14	17	18	19	20	21	20	20
10TH	24	25	26	27	28	31	1	2	3	4	7	8	9	10	11	14	15	16	17	18	19	19
																					180	180

Days in Bold listed Below

**September 2nd	- Teacher Contract Day-No AD/	January 23rd	- Last day of 1st Semester
September 3rd	- 1st Day of School	January 26th	- Secondary Pupil Free Day
October 6th	- Admissions Day (Observed)	January 27th	- 1st Day of 2nd Semester
November 11th	- Veteran's Day	February 16th	- Washington's Birthday
November 19th	- Elementary Pupil Free Day	April 5th-16th	- Spring Break
November 27th/28th	- Thanksgiving	May 31st	- Memorial Day
January 19th	- Martin Luther King Day	June 18th	- Last day of School

WINTER BREAK, DEC 22ND - JAN 2, 2004, HAS INTENTIONALLY BEEN OMITTED FOR THE PURPOSE OF CLAIMING THE MAXIMUM ADA.

ABSTENTIONS: None

TO: BOARD OF EDUCATION ACTION/CONSENT
05/15/03

FROM: SUPERINTENDENT/KENNETH R. BAILEY

RE: RENEW CONTRACT-SCHOOL SERVICES OF CALIFORNIA, INC.

RECOMMENDATION NO. A.9

It is recommended that the Board of Education approve an agreement for special fiscal services with School Services of California, Inc., effective July 1, 2003 and terminating June 30, 2004.

It is further recommended that in consideration for services provided by School Services of California, Inc., that the District agrees to pay \$2,460 annually, plus expenses.

Funding Information

Source:

General Fund-Unrestricted
Currently Budgeted:
Yes
Account Number:
01-00000-0-00000-72000-5800-050-1500
Description:

Other Gen'l Admin/Contracts/Business Serv.

COMMENT: This request represents a renewal of our contract with School Services of California, Inc. There is a \$10 per month increase in the annual fee over the previous contract. School Services of California, Inc. provides fiscal services to the District including school finance, legislation, school budgeting and general fiscal issues. This agreement also includes up to 12 direct service hours at no additional cost.

MOTION MADE BY: Ms. Bloomfield
SECONDED BY: Dr. Escarce

STUDENT ADVISORY VOTE: -0-
AYES: All (7)
NOES: None (0)
ABSTENTIONS: None

TO:

BOARD OF EDUCATION

ACTION/CONSENT

05/15/03

FROM: SUPERINTENDENT/JOSEPH N.QUARLES/RICK BAGLEY

RE:

CERTIFICATED PERSONNEL - Elections, Separations

RECOMMENDATION NO. A.10

ELECTIONS

ADDITIONAL ASSIGNMENTS

Name/Location	Rate	Effective	Not to Exceed
---------------	------	-----------	---------------

JOHN ADAMS MIDDLE SCHOOL

Brown, Dan	14 hrs @\$35.60	9/4/02-2/16/03	Est Hrly/\$500
Cady, Linda	7 hrs @\$35.60	9/4/02-2/16/03	Est Hrly/\$250
Mikulak, Tracy	14 hrs @\$35.60	9/4/02-2/16/03	Est Hrly/\$500

TOTAL ESTABLISHED HOURLY \$1,250

Comment: Planning and supervising Science Magnet grade level trips/activities
01-Unrestricted Resource

Daws, Tracy	7.5 hrs @\$35.60	4/28/03-6/6/03	Est Hrly/\$267
Hart, Matt	7.5 hrs @\$35.60	4/28/03-6/6/03	Est Hrly/\$267
Kilpatrick, Genevieve	7.5 hrs @\$35.60	4/28/03-6/6/03	Est Hrly/\$267
Post, Joel	7.5 hrs @\$35.60	4/28/03-6/6/03	Est Hrly/\$267
Scotland, Alva	7.5 hrs @\$35.60	4/28/03-6/6/03	Est Hrly/\$267
Tolin, Gary	7.5 hrs @\$35.60	4/28/03-6/6/03	Est Hrly/\$267
Torres, Lupe	7.5 hrs @\$35.60	4/28/03-6/6/03	Est Hrly/\$267

TOTAL ESTABLISHED HOURLY \$1,869

Comment: After school library supervision
01-Gifts

EDUCATIONAL SERVICES

Tellier, Bruce	10 hrs @\$35.60	2/1/03-3/6/03	Est Hrly/\$350
----------------	-----------------	---------------	----------------

TOTAL ESTABLISHED HOURLY \$350

Comment: Re-orchestrate Stairway parts
01-Gifts

Boxer, Lorissa	42.14 hrs @\$35.60	3/27/03-6/30/03	Est Hrly/\$1500
Friedman, Susan	42.14 hrs @\$35.60	3/27/03-6/30/03	Est Hrly/\$1500
Gusmao-Garcia, Renata	42.14 hrs @\$35.60	3/27/03-6/30/03	Est Hrly/\$1500
Hollander, Christine	42.14 hrs @\$35.60	3/27/03-6/30/03	Est Hrly/\$1500
Hovest, Christine	42.14 hrs @\$35.60	3/27/03-6/30/03	Est Hrly/\$1500
Ipina, Elizabeth	42.14 hrs @\$35.60	3/27/03-6/30/03	Est Hrly/\$1500
Johnson, Rebecca	42.14 hrs @\$35.60	3/27/03-6/30/03	Est Hrly/\$1500
Jordan, Nancy	42.14 hrs @\$35.60	3/27/03-6/30/03	Est Hrly/\$1500
Kinsinger, Julie	42.14 hrs @\$35.60	3/27/03-6/30/03	Est Hrly/\$1500
Lazare, Shernice	42.14 hrs @\$35.60	3/27/03-6/30/03	Est Hrly/\$1500
Lopez, Felicia	42.14 hrs @\$35.60	3/27/03-6/30/03	Est Hrly/\$1500
Maiztegui, Laura	42.14 hrs @\$35.60	3/27/03-6/30/03	Est Hrly/\$1500
Mulkern, Nicole	42.14 hrs @\$35.60	3/27/03-6/30/03	Est Hrly/\$1500
Orum, Lori	42.14 hrs @\$35.60	3/27/03-6/30/03	Est Hrly/\$1500
Penland, Katherine	42.14 hrs @\$35.60	3/27/03-6/30/03	Est Hrly/\$1500

Scheer, Susan	42.14 hrs @\$35.60	3/27/03-6/30/03	Est Hrly/\$1500
---------------	--------------------	-----------------	-----------------

Suskin, Robyn	42.14 hrs @\$35.60	3/27/03-6/30/03	Est Hrly/\$1500
Wintner, Lisa	42.14 hrs @\$35.60	3/27/03-6/30/03	<u>Est Hrly/\$1500</u>

TOTAL ESTABLISHED HOURLY \$27,000

Comment: Literacy Teacher Coach
Stupski Foundation

CHILD DEVELOPMENT SERVICES

Perez, Silvia	64 hrs @\$18.93	4/14/03-4/25/03	<u>Own Hrly/\$1212</u>
			TOTAL OWN HOURLY \$1,212

Comment: Spring Break: CDS Operating 4/14/03-4/25/03
Lead Teacher 15% Increment
12-CD:St Genl Child Care (GCTR)

Martinez, Emelita	64 hrs @\$28.27	4/14/03-4/25/03	Own Hrly/\$1809
Prinz, Leah	64 hrs @\$25.73	4/14/03-4/25/03	<u>Own Hrly/\$1647</u>
			TOTAL OWN HOURLY \$3,456

Comment: Spring Break: CDS Operating 4/14/03-4/25/03
12-Extended Day Care (GLTR)

Cruse, Patricia	64 hrs @\$24.69	4/14/03-4/25/03	Own Hrly/\$1580
Samimi, Leili	64 hrs @\$17.72	4/14/03-4/25/03	Own Hrly/\$1134
Cruse, Patricia	64 hrs @\$21.95	4/14/03-4/25/03	<u>Own Hrly/\$1405</u>
			TOTAL OWN HOURLY \$4,119

Comment: Spring Break: CDS Operating 4/14/03-4/25/03
12-CD:Fed Child Care Ctr-BSD FCTR

Albricker, Valerie	64 hrs @\$17.72	4/14/03-4/25/03	Own Hrly/\$1134
Arthur, Diane	64 hrs @\$17.41	4/14/03-4/25/03	Own Hrly/\$1114
Barba, Yesenia	64 hrs @\$16.78	4/14/03-4/25/03	Own Hrly/\$1074
Castellon-Gomez, Emma	64 hrs @\$18.67	4/14/03-4/25/03	Own Hrly/\$1195
Chaheme, Jessenia	64 hrs @\$18.36	4/14/03-4/25/03	Own Hrly/\$1174
Daanish, Daa'im	64 hrs @\$15.51	4/14/03-4/25/03	Own Hrly/\$993
Douglas, Jennifer	64 hrs @\$24.69	4/14/03-4/25/03	Own Hrly/\$1580
Glick, Heidi	64 hrs @\$26.26	4/14/03-4/25/03	Own Hrly/\$1681
Henry, Cassy	64 hrs @\$16.78	4/14/03-4/25/03	Own Hrly/\$1074
Martinez, Maria	64 hrs @\$21.74	4/14/03-4/25/03	Own Hrly/\$1391
Pitney, Bertha	64 hrs @\$24.05	4/14/03-4/25/03	Own Hrly/\$1539
Rodriguez, Claudia	64 hrs @\$21.00	4/14/03-4/25/03	Own Hrly/\$1344
Sterling-M, Patti	64 hrs @\$20.26	4/14/03-4/25/03	Own Hrly/\$1297
Patton, Roxanna	64 hrs @\$24.15	4/14/03-4/25/03	<u>Own Hrly/\$1546</u>
			TOTAL OWN HOURLY \$18,136

Comment: Spring Break: CDS Operating 4/14/03-4/25/03
12-Unrestricted Resource

Lumsden, Peter	32 hrs @\$33.14	4/22/03-4/25/03	<u>Own Hrly/\$1060</u>
			TOTAL OWN HOURLY \$1,060

Comment: Spring Break: CDS Operating 4/14/03-4/25/03
12-Unrestricted Resource

Vega, Dolores	32 hrs @\$24.15	4/14/03-4/17/03	<u>Own Hrly/\$773</u>
			TOTAL OWN HOURLY \$773

Comment: Spring Break: CDS Operating 4/14/03-4/25/03
12-Unrestricted Resource

Alidina, Jamila	64 hrs @\$21.21	4/14/03-4/25/03	Own Hrly/\$1357
-----------------	-----------------	-----------------	-----------------

Cerrato, Wendy	64 hrs @\$14.88	4/14/03-4/25/03	Own Hrly/\$952
Conway, Kenyatta	64 hrs @\$15.51	4/14/03-4/25/03	Own Hrly/\$993

Cueva, Claudia	64 hrs @\$18.57	4/14/03-4/25/03	Own Hrly/\$1188
Gonzalez, Yolanda	64 hrs @\$19.31	4/14/03-4/25/03	Own Hrly/\$1236
Herberg, Joan	64 hrs @\$22.57	4/14/03-4/25/03	Own Hrly/\$1444
Mercier, Alisha	64 hrs @\$22.57	4/14/03-4/25/03	Own Hrly/\$1444
Patel, Varsha	64 hrs @\$15.20	4/14/03-4/25/03	Own Hrly/\$973
Pekkanen, Jaana	64 hrs @\$21.95	4/14/03-4/25/03	Own Hrly/\$1405
Stamps, Elizabeth	64 hrs @\$21.00	4/14/03-4/25/03	Own Hrly/\$1344
Waxman, Tracy	64 hrs @\$23.42	4/14/03-4/25/03	<u>Own Hrly/\$1499</u>
TOTAL OWN HOURLY			\$13,835

Comment: Spring Break: CDS Operating 4/14/03-4/25/03
12-CD:St Genl Child Care (GCTR)

Schlegel, Gretchen	32 hrs @\$32.41	4/14/03-4/17/03	<u>Own Hrly/\$1037</u>
TOTAL OWN HOURLY			\$1,037

Comment: Spring Break: CDS Operating 4/14/03-4/17/25/03
12-CD:St Genl Child Care (GCTR)

MALIBU

Flowers, Lynne	160 hrs @\$35.60	9/30/02-6/10/03	<u>Est Hrly/\$5696</u>
TOTAL ESTABLISHED HOURLY			\$5,696

Comment: RSP Teacher
01-Special Education

SANTA MONICA HIGH SCHOOL

Marek, Celia	14 hrs @\$35.60	2/24/03-4/11/03	<u>Est Hrly/\$498</u>
TOTAL ESTABLISHED HOURLY			\$498

Comment: High School Exit Exam Tutorial
01-Unrestricted Resource

WEBSTER ELEMENTARY

Dzula, Ric	340 hrs @\$35.60	10/1/02-6/30/03	Est Hrly/\$12,104
Fein, Vicki	340 hrs @\$35.60	10/1/02-6/30/03	Est Hrly/\$12,104
Glansberg, Kim	340 hrs @\$35.60	10/1/02-6/30/03	Est Hrly/\$12,104
Rubin, Teresa	340 hrs @\$35.60	10/1/02-6/30/03	<u>Est Hrly/\$12,104</u>
TOTAL ESTABLISHED HOURLY			\$48,416

Comment: Intensive Reading K-4
01-Unrestricted Resource

EXTENDED DUTY UNITS

<u>LOCATION</u>	<u>RATE</u>	<u>ACTIVITY</u>	<u>EFFECTIVE</u>	<u>TOTAL</u>
<u>WEBSTER ELEMENTARY SCHOOL</u>				
Jochims, Katie	1 unit @\$224	delete (Astrocamp on 4/24/03 agenda)	9/02-6/03	<\$224>
Stevens, Lori	1 unit @\$224	Yosemite	9/02-6/03	\$224
Winokur, Victoria	1 unit @\$224	Yosemite	9/02-6/03	<u>\$224</u>
TOTAL EXTENDED DUTY UNITS				\$224
01-Unrestricted Resource				

ROOSEVELT ELEMENTARY SCHOOL

Bradshaw, Kristen	2 units @\$224	Astrocamp	Spring 2003	\$448
Catanzano, Linda	2 units @\$224	Astrocamp	Spring 2003	\$448
Gooden, Akiko	2 units @\$224	Astrocamp	Spring 2003	\$448

Ledoux, Joseph	2 units @\$224	Astrocamp	Spring 2003	\$448
Paul, Eric	2 units @\$224	Astrocamp	Spring 2003	\$448
Talt, Leslie	2 units @\$224	Astrocamp	Spring 2003	\$448

Vega, Dolores	2 units @\$224	Astrocamp	Spring 2003	<u>\$448</u>
---------------	----------------	-----------	-------------	--------------

TOTAL EXTENDED DUTY UNITS	\$3,136
01-Unrestricted Resource	

TOTAL ESTABLISHED HOURLY, OWN HOURLY and EXTENDED DUTY UNITS	<u>\$132,067</u>
---	-------------------------

SUBSTITUTE TEACHERS

Effective

LONG-TERM SUBSTITUTES

(@\$184 Daily Rate)

Everett, Christina	4/28/03
--------------------	---------

Latham, Diana	5/5/03
---------------	--------

Seaman, Elizabeth	4/28/03
-------------------	---------

REGULAR DAY-TO-DAY

(@120 Daily Rate)

Mecolick, Bianca	4/29/03
------------------	---------

MOTION MADE BY: Ms. Bloomfield
 SECONDED BY: Dr. Escarce

STUDENT ADVISORY VOTE: -0-
AYES: All (7)
NOES: None (0)
ABSTENTIONS: None

TO: BOARD OF EDUCATION ACTION/CONSENT
05/15/03
FROM: SUPERINTENDENT/JOSEPH N. QUARLES/RICK BAGLEY
RE: SPECIAL SERVICES EMPLOYEES

RECOMMENDATION NO. A.11

It is recommended that the following Special Services Employee contracts be approved in accordance with District policies and salary schedules and be assigned pursuant to BP 4102. Funding for the positions listed are included in the 2002/03 budget.

ELECTIONS

<u>Name/Location</u>	<u>Not to Exceed</u>	<u>Effective</u>	<u>Rate</u>
Earnhardt, Jessica Student and Family Support Services, drug counselor, provide weekly substance abuse prevention groups for students and their parents at SAMOHI FUNDING: 01-90120-0-19150-10000-1910-040-1501-100% Gifts	\$1,800	4/01/03-6/30/03	\$600/mo
Holland, Julia Pt Dume Marine Science, provide vocal music instruction to classes k-5 FUNDING: 01-90150-0-11100-10000-2917-019-1501-100% Reimbursed by PTA	\$2,200	4/28/03-6/20/03	\$35/hr
O'Flynn, Julie Student and Family Support Services, provide nurse support for the Health Champions positive health profile program FUNDING: 01-93190-0-11100-31400-1910-041-1501-100% St John's: Health Champions	\$3,124	12/01/02-4/30/03	\$142/day

MOTION MADE BY: Ms. Bloomfield
SECONDED BY: Dr. Escarce

STUDENT ADVISORY VOTE: -0-
AYES: All (7)
NOES: None (0)
ABSTENTIONS: None

TO: BOARD OF EDUCATION ACTION/CONSENT
5/15/03
FROM: SUPERINTENDENT/JOSEPH N. QUARLES/RICK BAGLEY
RE: 2003-2004 DECLARATION OF NEED FOR FULLY QUALIFIED
EDUCATORS

RECOMMENDATION NO. A.12

It is recommended that the District adopt the 2003-2004 Declaration of Need for Fully Qualified Educators.

COMMENT: Based on prior year data, the following Declaration stipulates those areas and numbers of emergency permit holders Santa Monica-Malibu anticipates for the 2003-2004 school year. With Board approval, the Declaration will be sent to the Commission on Teacher Credentialing (CTC) thereby establishing the District's need areas for 2003-2004.

Under Education Code 44300 and Senate Bill 322, the Declaration enables the District to streamline its approach to obtaining emergency credentials by establishing the statement of need once rather than on a person-by-person basis. Therefore, as the District finds it necessary to employ teachers under emergency permits, the application process and approval will be more quickly completed.

This declaration may be revised with Board approval as hiring needs change during the school year.

The Board has received a copy of the Declaration of Need for Fully Qualified Educators and supporting documentation under separate cover. These documents are on file in the Office of Human Resources and will be included with the permanent minutes of the meeting.

MOTION MADE BY: Ms. Bloomfield
SECONDED BY: Dr. Escarce

STUDENT ADVISORY VOTE: -0-
AYES: All (7)
NOES: None (0)
ABSTENTIONS: None

DECLARATION OF NEED FOR FULLY QUALIFIED EDUCATORS

- ☒ Original declaration of need for year 2003-2004
☐ Revised declaration of need for year _____

For Service in a School District

Name of District Santa Monica-Malibu Unified Sch. Dist. District CDS Code 64980

Name of County Los Angeles County CDS Code 019

By submitting this annual Declaration the district is certifying the following:

- a diligent search, as defined on page 4 of this Declaration, to recruit a fully prepared teacher for the assignment(s) was made
- if a suitable fully prepared teacher is not available to the school district, the district make a reasonable effort to recruit based on the priority stated on page 4 of this Declaration

The governing board of the school district specified above adopted a declaration at a regularly scheduled public meeting held on 5 / 15 / 03 certifying that there is an insufficient number of certificated persons who meet the district's specified employment criteria for the position(s) listed on the attached form. The attached form was part of the agenda, and the declaration did NOT appear as part of a consent calendar.

► *Enclose a copy of the Board agenda item*

With my signature below I verify that the item was acted upon favorably by the board. The declaration shall remain in force until June 30, 2004. For a declaration to remain in force for longer than one year, the district must have an approved Plan to Develop Fully Qualified Educators on file with the Commission.

Submitted by (Superintendent, Board Secretary, or Designee):

Joseph N. Quarles, Ed.D.		Dept. Supt./Chief of Staff
<i>Name</i>	<i>Signature</i>	<i>Title</i>
(310) 450-8338 x 220	(310) 450-0898	5/15/03
<i>Fax Number</i>	<i>Telephone Number</i>	<i>Date</i>
1651 Sixteenth Street	Santa Monica, CA 90404	
<i>Mailing Address</i>		

For Service in a County Office of Education, State Agency or Non-Public School or Agency

Name of County _____ County CDS Code _____

Name of State Agency _____

Name of NPS/NPA _____ County of Location _____

(Complete only the appropriate line.)

The Superintendent of the County Office of Education or the Director of the State Agency or the Director of the NPS/NPA specified above adopted a declaration on ____/____/____, at least 72 hours following his or her public announcement that such a declaration would be made, certifying that there is an insufficient number of certificated persons who meet the county's, agency's or school's specified employment criteria for the position(s) listed on the attached form.

The declaration shall remain in force until June 30, _____. For a declaration to remain in force for longer than one year, the county, agency or school must have an approved Plan to Develop Fully Qualified Educators on file with the Commission.

► *Enclose a copy of the public announcement*

Submitted by Superintendent or Director:

Name	Signature	Title
Fax Number	Telephone Number	Date
Mailing Address		

► This declaration must be on file with the California Commission on Teacher Credentialing before any emergency permits will be issued for service with the employing agency

Areas of Anticipated Need for Fully Qualified Educators

Based on the previous year's actual needs and projections of enrollment, please indicate the number of emergency permits the employing agency estimates it will need in each of the identified areas during the valid period of this Declaration of Need for Fully Qualified Educators. This declaration shall be valid only for the type(s) and subjects(s) identified below.

This declaration must be revised by the employing agency when the total number of emergency permits applied for exceeds the estimate by ten percent. Board approval is required for a revision.

Type of Emergency Permit	Estimated Number Needed
Multiple Subject with no emphasis	5
Multiple Subject with CLAD emphasis	2
Multiple Subject with BCLAD emphasis (list target languages on page 3)	2
Single Subject with no emphasis	10
Single Subject with CLAD emphasis	2
Single Subject with BCLAD emphasis (list target languages on page 3)	3
CLAD Permit (applicant already holds teaching credential)	1
BCLAD (applicant already holds teaching credential, list target languages on page 3)	2
Education Specialist: Deaf and Hard of Hearing	
Mild/Moderate	5
Physical and Health Impaired	
Moderate/Severe	3
Visually Impaired	1
Early Childhood Special Education	1
Resource Specialist	
Clinical or Rehabilitative Services:	
Language, Speech and Hearing	1
Special Class Authorization	
Library Media Teacher Services	1

Subjects on Emergency Single Subject Teaching Permits

Identify the subjects of estimated need with a check mark:

- | | |
|--|--|
| <input type="checkbox"/> Agriculture | <input type="checkbox"/> Home Economics |
| <input checked="" type="checkbox"/> Art | <input type="checkbox"/> Industrial & Technology Education |
| <input type="checkbox"/> Business | <input checked="" type="checkbox"/> Math |
| <input checked="" type="checkbox"/> English | <input checked="" type="checkbox"/> Music |
| <input checked="" type="checkbox"/> Foreign Language | <input checked="" type="checkbox"/> Physical Education |
| <input checked="" type="checkbox"/> French | <input checked="" type="checkbox"/> Science: Biological Sciences |
| <input type="checkbox"/> German | <input checked="" type="checkbox"/> Science: Chemistry |
| <input checked="" type="checkbox"/> Spanish | <input type="checkbox"/> Science: Geosciences |
| <input type="checkbox"/> Other (Specify) _____ | <input type="checkbox"/> Science: Physics |
| <input checked="" type="checkbox"/> Health Science | <input checked="" type="checkbox"/> Social Science |

Target Language(s) on Bilingual Emphasis and BCLAD Permits

List the target languages of estimated need under the appropriate category.

Multiple Subject	Single Subject	BCLAD Permits
1. <u>Spanish</u>	1. <u>Spanish</u>	1. <u>Spanish</u>
2. _____	2. _____	2. _____
3. _____	3. _____	3. _____
4. _____	4. _____	4. _____
5. _____	5. _____	5. _____

Limited Assignment Permits

Limited Assignment Permits may only be issued to applicants holding a valid California teaching credential based on a baccalaureate degree and a professional preparation program including student teaching.

Based on the previous year's actual needs and projections of enrollment, please indicate the number of limited assignment permits the employing agency estimates it will need in multiple subject and single subject areas.

TYPE OF LIMITED ASSIGNMENT PERMIT	ESTIMATED NUMBER NEEDED
Multiple Subject	2
Single Subject	2
TOTAL	4

Efforts to Recruit Certificated Personnel

The employing agency declares that it has implemented in policy and practices a process for conducting a diligent search that includes, but is not limited to, distributing job announcements, contacting college and university placement centers, advertising in local newspapers, exploring incentives included in the Teaching As A Priority Block Grant (refer to www.cde.ca.gov for more details), participating in the state and regional recruitment centers and participating in job fairs in California.

If a suitable teacher is not available to the school district, the district made a reasonable effort to recruit an individual for the assignment, in the following order:

- an individual who is scheduled to complete initial preparation requirements within six months
- a candidate who qualifies and agrees to participate in an approved internship including pre-internship program in the region of the school district

Efforts to Certify, Assign, and Develop Fully Qualified Personnel

Has your agency established a "Plan to Develop Fully Qualified Educators" in cooperation with other education agencies in the region pursuant to Title 5, California Code of Regulations, Section 80026.4?

☒ Yes

☐ No

If yes, when was it/will it be submitted? Re-Vamping Plan to Develop Fully Qualified Educators in conjunction with Induction Programs - Submission window is 9/03.
If no, please explain. _____

Does your agency participate in a Commission-accredited pre-internship program?

☒ Yes

☐ No

If yes, how many pre-interns do you expect to have this year? 3

If no, explain. _____

Has your agency established a District Intern program?

☐ Yes

☒ No

If no, explain. Not enough personnel and resources to develop this program internally.

Does your agency participate in a Commission-accredited college or university internship program?

☒ Yes

☐ No

If yes, how many interns do you expect to have this year? 10

If yes, list each college or university with which you participate in an

internship program. CS Northridge, CSU Los Angeles, CSU Long Beach, CSU Dominguez Hills

If no, explain why you do not participate in an internship program.

TO: BOARD OF EDUCATION

ACTION/CONSENT

05-15-03

FROM: JOHN E. DEASY/JOHN SLISS

RE: CLASSIFIED PERSONNEL - MERIT

RECOMMENDATION NO. A.13

It is recommended that the following appointments for Classified Personnel (merit system) be approved and/or ratified. All personnel will be properly elected in accordance with District policies and salary schedule.

ELECTION

SMART,	CAMPUS SECURITY OFFICER	04-28-03
HOWARD	6.0 HRS/10 OLYMPIC	
	RANGE: 25 STEP: 01	

SPRINGER,	OFFICE SPECIALIST	04-28-03
CAROLINE	3.0 HRS/10 MCKINLEY	
	RANGE: 22 STEP: 01	

PROMOTION

BAROT,	ACCOUNTING ASSISTANT II	04-21-03
CHRISTINE	8.0 HRS/11 SAMOHI	
	FR: SR OFFICE SPECIALIST	

INVOLUNTARY TRANSFER

PINEDA-LARA,	CHILDREN CENTER ASSISTANT	05-01-03
BLANCA	3.5 HRS/SY MUIR	
	FR: 3.5 HRS/SY PINE STREET	

PROFESSIONAL GROWTH

JONES,	INST ASST - SPECIAL ED	04-01-03
CHANCY	ADAMS	

MEDICAL LEAVE OF ABSENCE

GAVIN,	CHILDREN CENTER ASSISTANT	04-04-03
VALENCIA	EDISON	04-30-03

WILSON,	CAFETERIA WORKER I	03-10-03
GERALDINE	FRANKLIN	05-12-03

TEMP/ADDITIONAL

COLES,	INST ASST - SPECIAL ED	12-01-02
ROXANNE	PINE STREET	06-21-03

SUBSTITUTE

MIZEL, JULIA	INST ASST - SPECIAL ED SPECIAL ED	04-07-03 06-30-03
SHAMSION, DALIA	CHILDREN CENTER ASSISTANT CDS	03-10-03 06-30-03

EXHAUSTION OF ALL PAID LEAVES

GARCIA, ZENA	CAFETERIA WORKER I WEBSTER	05-06-03
MISHURIS, LYUBOV	CAFETERIA WORKER I SAMOHI	05-05-03

RESIGNATION

CHIDA, TOSHIMI	INST ASST - SPECIAL ED SPECIAL ED	04-25-03
NEVAREZ, REBECCA	INST ASST - BILINGUAL ROGERS	05-02-03

DISABILITY RETIREMENT

ARVANITES, LINDA	ADMINISTRATIVE ASSISTANT FRANKLIN	07-05-03
---------------------	--------------------------------------	----------

NEW POSITION

INST ASST - SPECIAL ED 6.0 HRS/SY ROGERS	04-03-03
--	----------

ABOLISH POSITION

VACANT	INST ASST - SPECIAL ED 6.0 HRS/SY ADAMS	03-20-03
--------	---	----------

VACANT	COMPUTER OPERATOR 8.0 HRS/12 CDS	04-08-03
--------	--	----------

MOTION MADE BY: Ms. Bloomfield

SECONDED BY: Dr. Escarce

STUDENT ADVISORY VOTE: -0-

AYES: All (7)
NOES: None (0)
ABSTENTIONS: None

TO: BOARD OF EDUCATION

ACTION/CONSENT

05-15-03

FROM: JOHN E. DEASY/JOHN SLISS

RE: CLASSIFIED PERSONNEL - NON-MERIT

RECOMMENDATION NO. A.14

It is recommended that the following be approved and/or ratified for Classified Personnel (Non-Merit). All personnel assigned will be properly elected on a temporary basis to be used as needed in accordance with District policies and salary scheduled.

STUDENT INTERN

RIVERO, VANESSA	SAMOH	03-31-03 - 06-30-03
-----------------	-------	---------------------

STUDENT HELPER

MORALES, ALEX	WORKABILITY	04-14-03 - 06-30-03
---------------	-------------	---------------------

NOON AIDE

SCHOELKOPF, ILIANA	WEBSTER	04-01-03 - 06-30-03
--------------------	---------	---------------------

ASSISTANT COACH

BERNARD, GREGARY	SAMOH	04-25-03 - 06-30-03
CARTER, AUNDRELL	MALIBU	01-15-03 - 03-31-03

MOTION MADE BY: Ms. Bloomfield

SECONDED BY: Dr. Escarce

STUDENT ADVISORY VOTE: -0-

AYES: All (7)

NOES: None (0)

ABSTENTIONS: None

TO: BOARD OF EDUCATION

ACTION/CONSENT

05/15/03

FROM: SUPERINTENDENT/ JOHN J. SLISS

RE: ADOPT RESOLUTION NO. 02-31 CLASSIFIED SCHOOL EMPLOYEES
WEEK 2003

RECOMMENDATION NO. A.15

It is recommended that the Board of Education adopt Resolution No. 02-31 in recognition of Classified Schools Employees Week May 19-23, 2003.

COMMENT: The attached resolution was reviewed in the joint meeting with the Personnel Commission on April 24, 2003.

MOTION MADE BY: Ms. Bloomfield
SECONDED BY: Dr. Escarce

STUDENT ADVISORY VOTE: -0-
AYES: All (7)
NOES: None (0)
ABSTENTIONS: None

**SANTA MONICA-MALIBU UNIFIED SCHOOL DISTRICT
BOARD OF EDUCATION AND PERSONNEL COMMISSION**

**RESOLUTION NUMBER 02-31
CLASSIFIED SCHOOL EMPLOYEES WEEK 2003**

WHEREAS, Classified school employees provide valuable services to schools and students of the Santa Monica-Malibu Unified School District; and

WHEREAS, Classified school employees contribute to the establishment and promotion of a positive instructional environment in our classrooms for the students and teachers; and

WHEREAS, Classified school employees play a vital role in providing for the welfare and safety of the Santa Monica-Malibu Unified School District's students; and

WHEREAS, Classified school employees strive for excellence in all areas relative to the life long learning educational communities of Santa Monica and Malibu;

THEREFORE, BE IT HEREBY RESOLVED that the Santa Monica-Malibu Unified School District's Board of Education and Personnel Commission hereby recognize and wish to honor the contributions of all Classified school employees to quality education in the State of California and in the Santa Monica-Malibu Unified School District, and declare the week of May 19 - 23, 2003, Classified School Employees' Week in the Santa Monica-Malibu Unified School District.

PASSED AND ADOPTED THIS 15th day of May, 2003, by the Santa Monica-Malibu Unified School District's Board of Education and this 6th day of May, 2003, by the Santa Monica-Malibu Unified School District's Personnel Commission.

Maria Leon-Vazquez, President

Mike Jordan, Board Member

Jose Escarce - Vice-President

Shane McLoud, Board Member

Emily Bloomfield, Board Member

Celia Carroll, Commission Chair

Julia Brownley, Board Member

Pam Brady, Commission Vice Chair

Oscar de la Torre, Board Member

Russell Barnard, Commission Member

John Deasy, Superintendent

TO: BOARD OF EDUCATION

ACTION/MAJOR

05/15/03

FROM: SUPERINTENDENT/PEGGY HARRIS

RE: APPROVAL OF SPECIAL EDUCATION CONTRACTS

RECOMMENDATION NO. A.16

It is recommended that the Board of Education approve the following Special Education Contracts for fiscal year 2002-2003 as follows:

NPS/NPA

2002-2003 Budget 01-65000-0-57500-11800-5825-043-1400

Nonpublic School/Agency	Student DOB	Service Description	Contract Number	Cost Not to Exceed
Institute for Applied Behavior Analysis	01-20-00	NPA - Behavior Therapy	#64	\$ 3,950
Kelter Center	02-28-92	NPA - Educational Therapy	#65	\$ 3,150
Steve Kaufman & Associates	03-24-98	NPA - Functional Analysis Assessment	#66	\$ 1,200

Amount Budgeted NPS/NPA 02/03	\$ 3,020,000
Prior Board Authorization as of 04/24/03	\$ 3,001,437
Balance	18,563

Total Amount for these Contracts	\$ 8,300
---	-----------------

Balance	\$ 10,263
----------------	------------------

Instructional Consultants

2002-2003 Budget 01-65000-0-50010-11800-5802-043-1400

Instructional Consultant	Student DOB	Service Description	Contract Number	Cost Not to Exceed
Dr. Trang Nguyen	02-28-92	Instr. Consultant-Vision Therapy	#23	\$ 1,200
Pyramid Educational Consultants, Inc.	07-17-92	Instr. Consultant-Behavior Therapy	#21 UC03231	\$ 8,600
Contract Increase				

Amount Budgeted Instructional Consultants 02/03	\$ 175,945
Prior Board Authorization as of 04/24/03	\$ 132,433
Balance	43,512

Total Amount for these Contracts	\$ 9,800
----------------------------------	----------

Balance	\$ 33,712
---------	-----------

COMMENT: According to the Education Code SEC.21 Section 56342, prior to recommending a new or continued placement in a non-public, non-sectarian school, the Individualized Education Program (IEP) Team must submit the proposed recommendation to the local governing board for its review and recommendation regarding the cost of such placement.

The recommendations for these severely handicapped students are made by the District IEP Teams in accordance with State and Federal laws. The mandates of IDEA require non-public school services be provided at no expense to parents if there is not an appropriate public school program available. Funding to come from a SELPA-wide non-public school/non-public agency reserve account.

MOTION MADE BY: Ms. Bloomfield
SECONDED BY: Dr. Escarce

STUDENT ADVISORY VOTE: -0-
AYES: All (7)

NOES: None (0)
ABSTENTIONS: None

TO: BOARD OF EDUCATION ACTION/MAJOR
05/15/03
FROM: SUPERINTENDENT/KENNETH R. BAILEY/VIRGINIA I. HYATT
RE: AUTHORIZATION TO PURCHASE APPLE COMPUTERS

RECOMMENDATION NO. A.17

It is recommended that the Board of Education authorize the purchase of computers, for Pt. Dume Elementary school, to Apple Computers, in an amount not to exceed \$60,000.

Funding Information

Source: General Fund Restricted
Currently Budgeted: Yes
Account Number: 01-90150-0-11100-10000-4400-019-4190
Description: PTA - Gift

COMMENT: Board policy states that any purchase over \$30,000 needs authorization from the Board of Education prior to release of the order. Permission is therefore requested to purchase twenty (20) eMAC computers, ten (10) iBooks, one (1) mobile wireless lab with twenty (20) iBooks, five (5) digital cameras, airports, AppleCare maintenance and other peripheral support equipment.

This purchase is being made by "piggy-backing" on Glendale Unified's bid #P-1693.

MOTION MADE BY: Ms. Bloomfield
SECONDED BY: Dr. Escarce

STUDENT ADVISORY VOTE: -0-
AYES: All (7)
NOES: None (0)

ABSTENTIONS: None

TO: BOARD OF EDUCATION

ACTION/MAJOR
05/15/03

FROM: JOHN E. DEASY/KENNETH R. BAILEY

RE: ADOPT RESOLUTION NUMBER 02-32 - APPROVING ASSIGNMENT OF DELINQUENT TAX RECEIVABLES TO THE CALIFORNIA STATEWIDE DELINQUENT TAX FINANCE AUTHORITY FOR THE FISCAL YEARS ENDING JUNE 30, 2003 AND 2004, AND AUTHORIZING EXECUTION AND DELIVERY OF RELATED DOCUMENTS AND ACTIONS

RECOMMENDATION NO. A.18

It is recommended that the Board of Education adopt Resolution No. 02-32 approving assignment of delinquent tax receivables to the California Statewide Delinquent Tax Authority for the 2002-03 and 2003-04 fiscal years, and authorizing execution and delivery of related documents and actions.

COMMENTS: At the October 17, 2002 Board Meeting, the Board of Education adopted Resolution Number 02-05, which approved assignment of delinquent tax receivables to the California Statewide Delinquent Tax Authority. Each member school district will receive 8% of its delinquent tax base within its area.

Subsequently, we received a communication from School Services of California, Inc. stating that the first round of financing of property tax delinquencies was completed in December, 2002 and each agency received payment for the 8% premium at that time. The next two financings will take place in October of 2003 and 2004. Although no legislation to amend the state law to repeal the benefit to school agencies, such a change is possible, especially in this year of budget shortfalls. Therefore, School Services believes and staff concurs, that by signing a contract now for the next two years of financings, the District would protect itself since a new state law cannot abrogate an existing contract.

MOTION MADE BY: Ms. Bloomfield

SECONDED BY: Dr. Escarce

STUDENT ADVISORY VOTE: -0-

AYES: All (7)

NOES: None (0)

ABSTENTIONS: None

RESOLUTION NUMBER 02-32

RESOLUTION OF THE BOARD OF EDUCATION OF THE SANTA MONICA-MALIBU UNIFIED SCHOOL DISTRICT APPROVING ASSIGNMENT OF DELINQUENT TAX RECEIVABLES TO THE CALIFORNIA STATEWIDE DELINQUENT TAX FINANCE AUTHORITY FOR THE FISCAL YEARS ENDING JUNE 30, 2003 AND 2004, AND AUTHORIZING EXECUTION AND DELIVERY OF RELATED DOCUMENTS AND ACTIONS

WHEREAS, under Section §6516.6 of the Government Code of the State of California (the “Law”), a school district is authorized to sell and assign to a joint powers authority any or all of its right, title, and interest in and to the enforcement and collection of delinquent and uncollected property taxes, assessments, and other receivables that have been levied by or on behalf of the school district for collection on the secured, unsecured, or supplemental property tax rolls in accordance with such terms and conditions as are set forth in an agreement with the joint powers authority; and

WHEREAS, the California Statewide Delinquent Tax Finance Authority (the “Authority”) has been formed as a joint powers authority for the purpose of purchasing delinquent ad valorem property taxes in accordance with the Law upon terms and conditions which are acceptable to school districts; and

WHEREAS, under the Law the amount of property tax receipts to be reported in a fiscal year for a school district for revenue limit purposes is equal to 100% of the school district’s allocable share of the taxes distributed to it for the fiscal year, and any additional amounts will not be reported and will be provided directly to the school district; and

WHEREAS, the District has previously sold to the Authority its allocable share of delinquent ad valorem property taxes levied by the County of Los Angeles (the “Tax Receivables”) for the fiscal years ending June 30 in each of the years 1999 through 2002; and

WHEREAS, the Authority has requested the District to sell its Tax Receivables to the Authority for the fiscal years ending June 30 in each of the years 2003 and 2004 on terms and conditions substantially identical to the terms and conditions contained in the Purchase and Sale Agreement (the “Prior Agreement”) relating to the original purchase of the Tax Receivables by the Authority from the District for the fiscal years ending June 30 in each of the years 1999 through 2002; and

WHEREAS, the Authority has made arrangements to issue and sell a certificate of participation representing a participation interest in all of the Tax Receivables received from the District and from other participating school districts in the County of Los Angeles, which certificate of participation will be sold to a designee of Plymouth Financial Company, Inc., a Delaware corporation (“Plymouth”); and

WHEREAS, the Authority has presented the District with a commitment letter among the District, the Authority and Plymouth, and the governing board of the District wishes to take its action at this time to authorize the execution and delivery of such commitment letter and all documents and actions relating to the sale of the Tax Receivables to the Authority for the fiscal years ending June 30 in each of the years 2003 and 2004, upon the terms and conditions substantially identical to the terms and conditions set forth in the Prior Agreement;

NOW, THEREFORE, BE IT RESOLVED by the Board of Education of the Santa Monica-Malibu Unified School District, as follows:

Section 1. Approval of Financing Plan; Sale of Tax Receivables to Authority. The Board hereby approves the financing plan presented to the Board at the meeting at which this Resolution is adopted, and as generally described in the recitals of this Resolution. Pursuant to the financing plan, the Board hereby approves and authorizes the sale of the Tax Receivables to Authority for the fiscal years ending June 30 in each of the years 2003 and 2004 on terms and conditions substantially identical to the terms and conditions contained in the Prior Agreement. The Chief Financial Officer of the District is hereby authorized and directed to approve the final form of a Purchase and Sale Agreement between the District and the Authority, containing terms and conditions substantially identical to the terms and conditions set forth in the Prior Agreement. The Chief Financial Officer of the District is further hereby authorized and directed to execute the final form of said Purchase and Sale Agreement in the name and on behalf of the District. The Board hereby authorizes the delivery and performance of the executed Purchase and Sale Agreement.

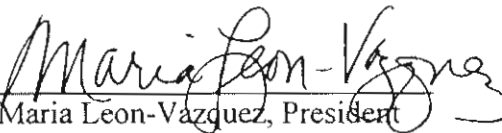
Section 2. Official Actions. The Superintendent, the Chief Financial Officer and any and all other officers of the District are hereby authorized and directed, for and in the name and on behalf of the District, to do any and all things and take any and all actions, including execution and delivery of any and all assignments, certificates, requisitions, agreements, notices, consents, instruments of conveyance, warrants and other documents, which they, or any of them, may deem necessary or advisable in order to consummate the sale of the Tax Receivables to the Authority for the fiscal years ending June 30 in each of the years 2003 and 2004. Whenever in this resolution any officer of the District is authorized to execute or countersign any document or take any action, such execution, countersigning or action may be taken on behalf of such officer by any person designated by such officer to act on his or her behalf if such officer is absent or unavailable.

Section 3. Effective Date. This resolution shall take effect from and after the date of approval and adoption thereof. PASSED AND ADOPTED this 15th day of May, 2003, by the following vote:

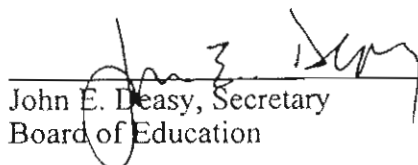
AYES: All (7)

NOES: None (0)

ABSENT: None


Maria Leon-Vazquez, President
Board of Education

ATTEST:


John E. Deasy, Secretary
Board of Education

TO: BOARD OF EDUCATION

ACTION/MAJOR
05/15/03

FROM: JOHN E. DEASY/KENNETH R. BAILEY

RE: APPROVAL OF APPLICATION FOR SENIOR EXEMPTION IN SCHOOL
FUNDING MEASURE - MEASURE "S"

RECOMMENDATION NO. A.19

It is recommended that the Board of Education approve the attached application form to be used for Senior Exemption requests, upon passage of the District's School Funding Measure (Measure "S").

COMMENTS: At the May 1, 2003 Board Meeting, the Board of Education discussed item D.1, *Application for Senior Exemption in School Funding Measure - Measure "S"*. It was agreed to bring back the item for approval at the May 15, 2003 Board Meeting.

At the February 1, 2003 Board Meeting, the Board of Education adopted Resolution No. 01-18 for the Quality Public Education Preservation Act of 2003. Section 4.A. Tax Base of the measure states that "...An exemption to the qualified special tax is available for a person 65 years or older who owns and occupies a parcel as a principal residence and applies for an exemption in accordance with guidelines established by the Board of Education of the District (the "Board")."

MOTION MADE BY: Ms. Bloomfield
SECONDED BY: Dr. Escarce

STUDENT ADVISORY VOTE: -0-
AYES: All (7)
NOES: None (0)
ABSTENTIONS: None

APPLICATION FOR SENIOR EXEMPTION FROM PARCEL TAX
Tax Year 2004-2005

To qualify for the Senior Exemption, a parcel within the District must be owned and occupied by an individual who has attained age 65 before July 1, 2004, and who uses the property as his or her principle place of residence. (An individual will be considered an owner of the property if title is held in trust for his or her benefit.) To claim the Senior Exemption, this Application must be filed with, and approved by, the District each year.

INSTRUCTIONS: This application is to be completed by the person age 65 or older who owns and occupies the property.¹ Only one such person per household need apply. Return this form and all requested documents (copy of proof of age as detailed in Part B.2. and copy of current tax bill) to the Santa Monica Malibu Unified School District, 1651 16th Street, Santa Monica, CA 90404-3891, ATTN: Business Office, no later than **5:00 PM on April 1, 2004**. If you have any questions regarding this Application, please call the District at (310) 450-8338, ext. 269.

Please print all requested information clearly.

PART A - INFORMATION ABOUT THE PROPERTY

1. Assessor Parcel Number as shown on your property tax bill:_____

(If you own contiguous parcels that qualify for the Senior Exemption as described in Part C, please list one parcel here and the remainder in Part C.)

2. Name as it appears on your property tax bill

_____ <i>Last Name</i>	_____ <i>First Name</i>	_____ <i>Middle Initial</i>
---------------------------	----------------------------	--------------------------------

3. Address of property:

_____ <i>Street Address</i>	_____ <i>City</i>	_____ <i>State</i>	_____ <i>Zip</i>	_____ <i>Phone #</i>
--------------------------------	----------------------	-----------------------	---------------------	-------------------------

4. Mailing address if different from the above:_____

5. **Attach a Copy of Your Current Property Tax Bill**

¹Lessees age 65 and over are not entitled to the exemption.

Application for Senior Exemption from Parcel Tax - Page 2 of 2

PART B - INFORMATION REGARDING YOUR AGE

1. Date of birth: _____
 Month Day Year
2. Attach a *Copy* of One of the Following Documents as Proof of Age: Driver's License, Birth Certificate, Passport or Medicare Card.

PART C - TO BE USED ONLY BY THOSE PERSONS CLAIMING THE EXEMPTION ON CONTIGUOUS PARCELS²

Please provide the information for the contiguous parcels you claim are exempt.

Assessor Parcel Number:

Address:

1. _____
2. _____
3. _____

(Add additional sheets if necessary.)

You Must Attach a Copy of Your Current Tax Bill for Each Parcel Listed Above

The Santa Monica Malibu Unified School District reserves the right to verify the information provided.

Executed on _____, 200__, at _____, California.

I certify that I own and occupy the property listed above, and use the property as my principle place of residence. I declare under penalty of perjury that this Application (including accompanying copies of proof documents) is, to the best of my knowledge, correct and complete.

Signature of Applicant

This space for Santa Monica Malibu Unified School District Only	
_____Request Approved	Date County Auditor Notified_____
_____Request Denied	School District Authorized Signature_____
Reason, if Denied:_____	

²If you own multiple parcels within the District, you may only claim the Senior Exemption for the parcel that constitutes your principle place of residence and any Contiguous Parcels. "Contiguous Parcels" are any parcels that share a common lot line with the parcel on which an owner-occupied residence is located (each an "Immediately Adjacent Parcel"), and any parcels that share a common lot line with any Immediately Adjacent Parcel.

TO: BOARD OF EDUCATION ACTION/MAJOR
05/15/03
FROM: JOHN DEASY/KENNETH R. BAILEY/TRACIE THOMAS
RE: ADOPTION OF RESOLUTION NUMBER 02-33: REDUCTION IN HOURS
OF CAFETERIA WORKERS I & II

RECOMMENDATION NO. A.20

It is recommended that the Board of Education approve Resolution No. 02-33 to reduce the hours of Cafeteria Workers I and II for the 2003/2004 school year.

COMMENT: The Food and Nutrition Services Department believes it is necessary to make these reductions in hours in order to comply with the current funding restrictions of the District's budget crisis.

MOTION MADE BY: Ms. Bloomfield
SECONDED BY: Dr. Escarce

STUDENT ADVISORY VOTE: -0-
AYES: All (7)
NOES: None (0)
ABSTENTIONS: None

**BEFORE THE GOVERNING BOARD OF THE
SANTA MONICA-MALIBU UNIFIED SCHOOL DISTRICT
COUNTY OF LOS ANGELES, STATE OF CALIFORNIA**

RESOLUTION NO. 02-33

**RESOLUTION REGARDING REDUCTION IN HOURS
OF CAFETERIA WORKERS I AND II**

WHEREAS, prior notice has been given to the appropriate bargaining unit pursuant to applicable sections of the Collective Bargaining Agreement; and

WHEREAS, it is the opinion of this Board that it has become necessary to reduce the hours for the following Cafeteria Workers I and II for lack of work and/or lack of funds:

EMPLOYEE NUMBER	SITE	POSITION	CURRENT HOURS	NEW HOURS
990505	Cabrillo	CWII	7	4
488582	Lincoln	CWI	4	3
284915	Malibu	CWI	6	3
127696	Malibu	CWI	8	3
284482	Malibu	CWI	6	3
747376	SAMOHI	CWI	6	3
643391	Adams	CWI	3.5	3
038520	Adams	CWI	6.5	3
410204	McKinley	CWII	7	6
279359	Edison	CWII	6.5	6
518729	Grant	CWII	6.5	6
865045	Grant	CWI	3.5	3

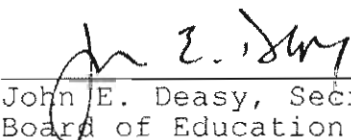
BE IT RESOLVED by the Governing Board as follows:

1. That due to lack of funds and/or lack of work, the number of Cafeteria Workers I and II and the amount of services rendered shall be reduced by layoff/reduction in hours as specified above, pursuant to Education Code Section 45308.
2. That the Superintendent is directed to give notice of layoff to the affected classified employees pursuant to the requirements of law.
3. That said layoffs/reduction in hours shall become effective on June 30, 2003, subject to negotiations to the extent required by law.
4. That employees laid off/reduced in hours pursuant to this Resolution shall be eligible for re-employment pursuant to Education Code Section 45298.

5. That the Superintendent, or his designee, is delegated the authority to take all actions necessary and proper to the accomplishment of the purposes of this Resolution.

Adopted by the Governing Board of the Santa Monica-Malibu Unified School District on May 15, 2003, by the following vote:

AYES	All (7)
NOES	None (0)
ABSENT	None (0)



John E. Deasy, Secretary
Board of Education

TO: BOARD OF EDUCATION

ACTION/MAJOR
05/15/03

FROM: JOHN E. DEASY / KENNETH R. BAILEY

RE: APPOINTMENT TO FILL ONE VACANCY - FINANCIAL OVERSIGHT
COMMITTEE

RECOMMENDATION NO. A.21

It is recommended that the Board of Education name an appointee to fill the existing vacancy on the Financial Oversight Committee.

Mr. Paul Silvern

COMMENT: At it's meeting of May 1, the Board of Education directed that applications to fill the existing vacancy on the Financial Oversight Committee be reviewed by the members of the Financial Oversight Committee and that the Committee recommend a replacement to the Board.

The Financial Oversight Committee has reviewed all applications and has unanimously endorsed the candidate to be named this evening.

* * * * *

Moved by Ms. Brownley and seconded
by Dr. Escarce to appoint Mr. Paul
Silvern.

AYES: All (7)
NOES: None (0)

Further, the Board indicated its intent to reopen the application process and place an item on the June 12 agenda to consider expansion of the Financial Oversight Committee. The Board directed staff to contact the remaining applicants for possible future appointment.

MOTION MADE BY: Ms. Bloomfield
SECONDED BY: Dr. Escarce

STUDENT ADVISORY VOTE:
AYES:
NOES:

ABSTENTIONS:

TO: BOARD OF EDUCATION DISCUSSION/MAJOR
05/15/03
FROM: SUPERINTENDENT / KEN BAILEY / CHRIS CORLISS
RE: MASTER FACILITIES JOINT USE AGREEMENT WITH THE
CITY OF MALIBU

DISCUSSION ITEM NO. D.1

It is recommended that the Board of Education authorize the Superintendent to approve the Master Joint Use Agreement with the City of Malibu.

COMMENT: The District currently has two (2) joint use agreements operating with the City of Malibu (City) and one (1) with the City and Point Dume Community Services District (PDCSD) providing for City and community education, recreation and athletic programming use of District facilities at Malibu High School, Webster Elementary and Point Dume Marine Science Elementary School sites.

The proposed Agreement enhances District facilities management and provides an opportunity for expanded City and community access to certain joint use facilities at all four (4) District school sites.

The Agreement updates and sets out a schedule of use and calculates an annual contribution to be made by the City to the District to cover Basic Costs of use of specific facilities.

The Agreement provides a process and procedure for possible future joint development of facilities on District of City land.

The Agreement has been reviewed and approved by District and City staff as to form and content.

A copy of the Agreement has been distributed to members of the Board of Education. It will be available for review in the Educational Services Office.

TO: BOARD OF EDUCATION

DISCUSSION

05/15/03

FROM: SUPERINTENDENT/STEVE CANNELL

RE: ADVANCED PLACEMENT AND HONORS PROGRAMS

DISCUSSION ITEM NO. D.2

The Advanced Placement and Honors programs are vehicles to ensure the extraordinary achievement for all students. Student participation and achievement in these programs can also provide opportunities to close the achievement gap experienced by some of the students in SMMUSD.

This presentation and discussion will review the results of the 2002 Advanced Placement exams for SAMO and MHS, as well as reviewing various aspects of the program such as participation rates by race and ethnicity, student achievement for students who choose to enter the programs via waiver, rather than recommendation. The presentation will result in recommendations for the next steps to further improve student performance and participation rates in these programs while maintaining the programs' level of rigor.

One copy of the PowerPoint presentation will be available at the Board Meeting. Other copies may be obtained by contacting the Educational Services Department.

NOTE:

A copy of the PowerPoint presentation is attached to the permanent Minutes.

Advanced Placement & Honors Programs

Santa Monica-Malibu USD

The Question

Is it possible to increase access to rigorous curriculum, while maintaining or improving a program's level of excellence?

AP & Honors Overview

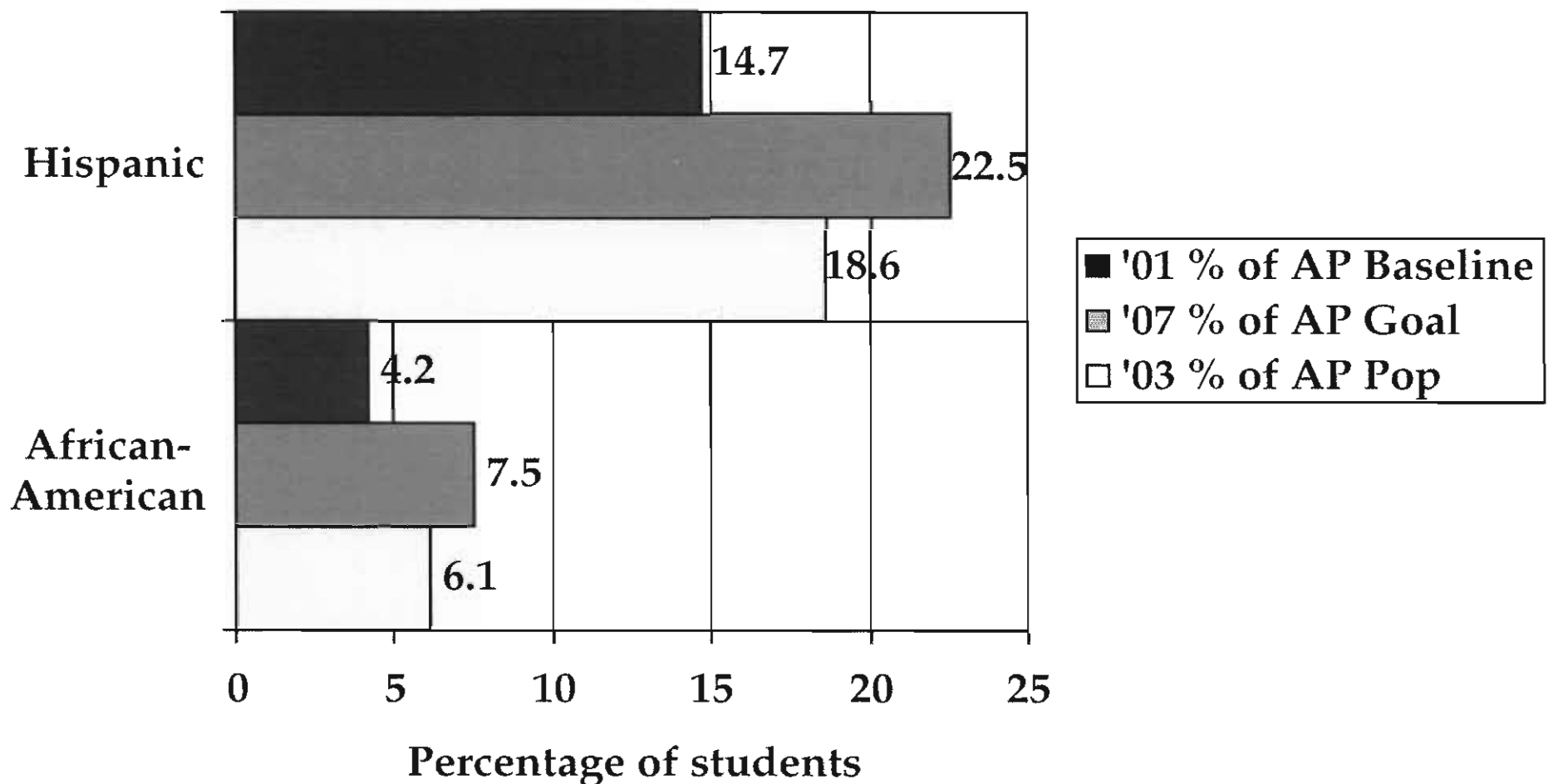
- Programs are designed to provide a student with more rigorous coursework;
- Often honors courses are prerequisite courses for AP courses;
- Most honors and AP courses are offered in English, Math and Science;
- Both SAMO and MHS allow students to petition for entry into an honors or AP course.

Advanced Placement Program

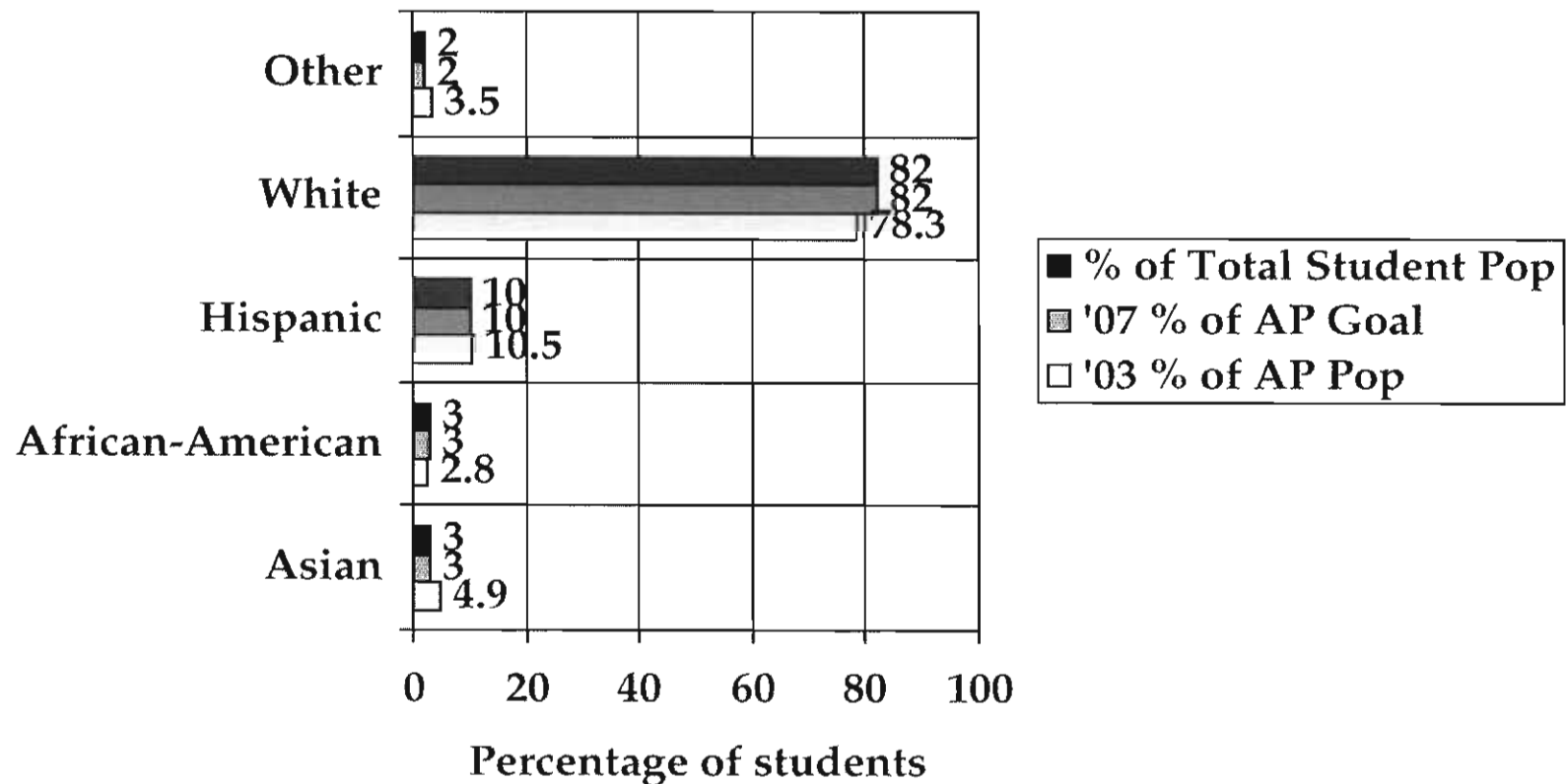
SAMO & MHS AP Report

- Participation rates increased for all targeted groups
- Access rates increased
- The number of students taking AP courses increased
- The number of exams taken increased
- Pass rates increased

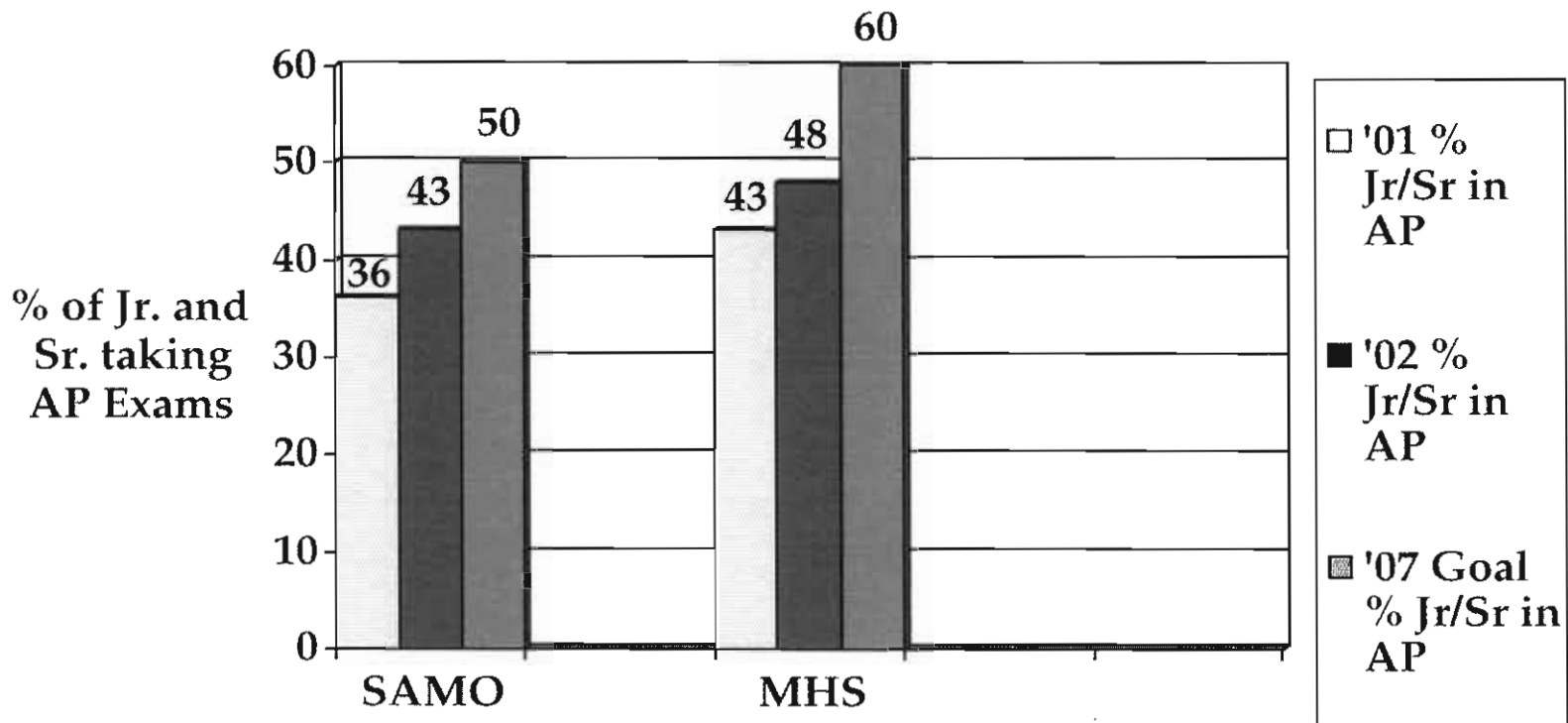
SAMO Target Student Group Participation Rates and Goals



MHS Participation Rates

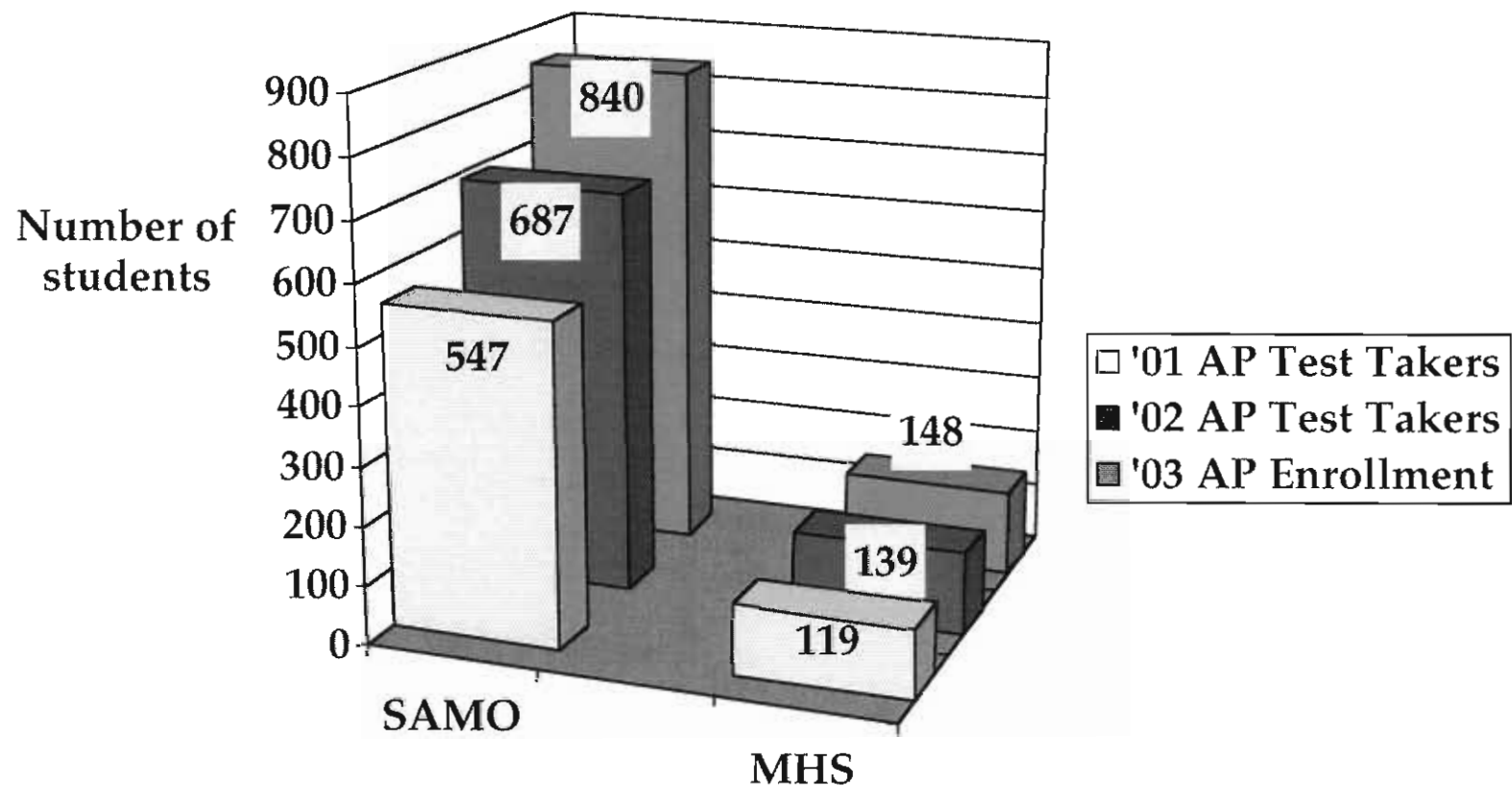


SAMO & MHS Access Rates



SAMO & MHS

Students Taking AP Courses



2002 SAMO & MHS

Number of Exams & Exam per Student

SAMO:

Exams taken:

1273 (954)

Exams per student:

1.87 (1.74)

MHS:

Exams taken:

288 (244)

Exams per student:

2.07 (2.05)

Information in parenthesis is comparison data
from 2001; the baseline year.

SAMO & MHS

AP Exam Pass Rates

SAMO

% of Exams scoring 3:
28% (26%)

% of Exams scoring 4:
24% (16%)

% of Exams scoring 5:
16% (22%)

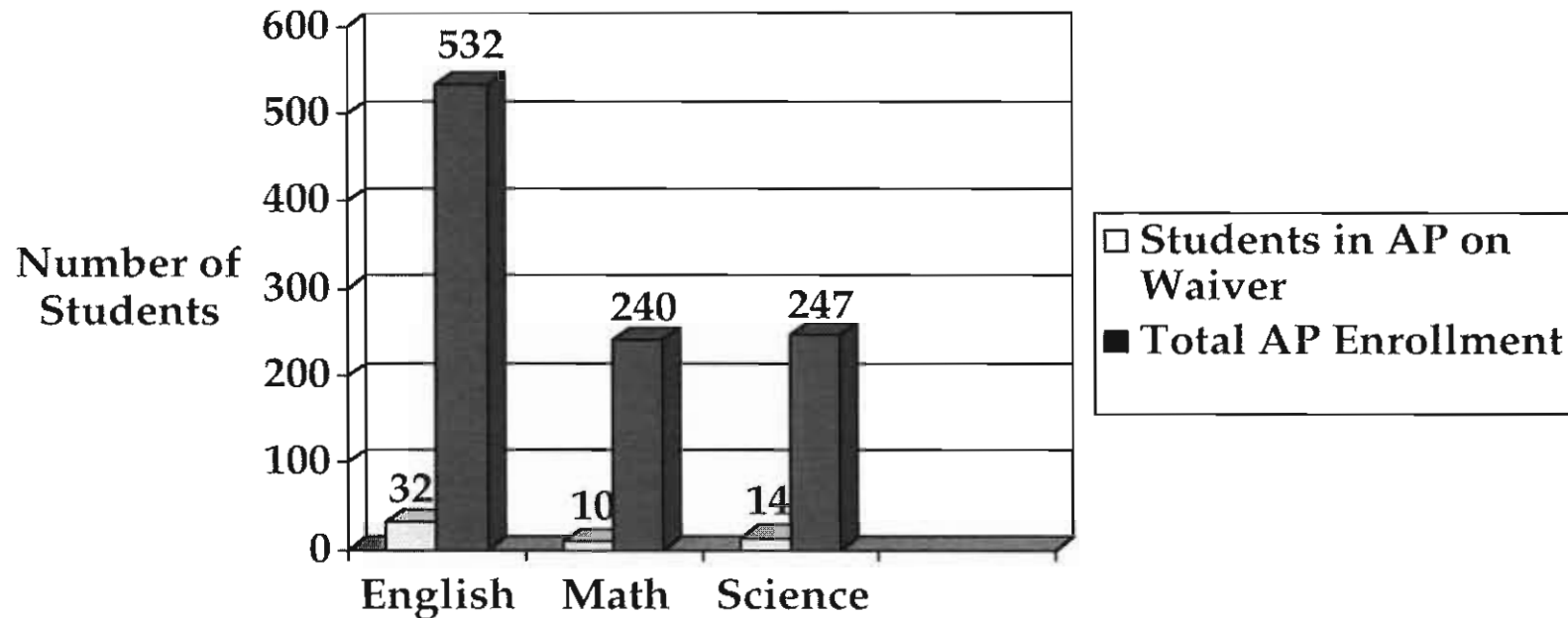
MHS

% of Exams scoring 3:
36% (35%)

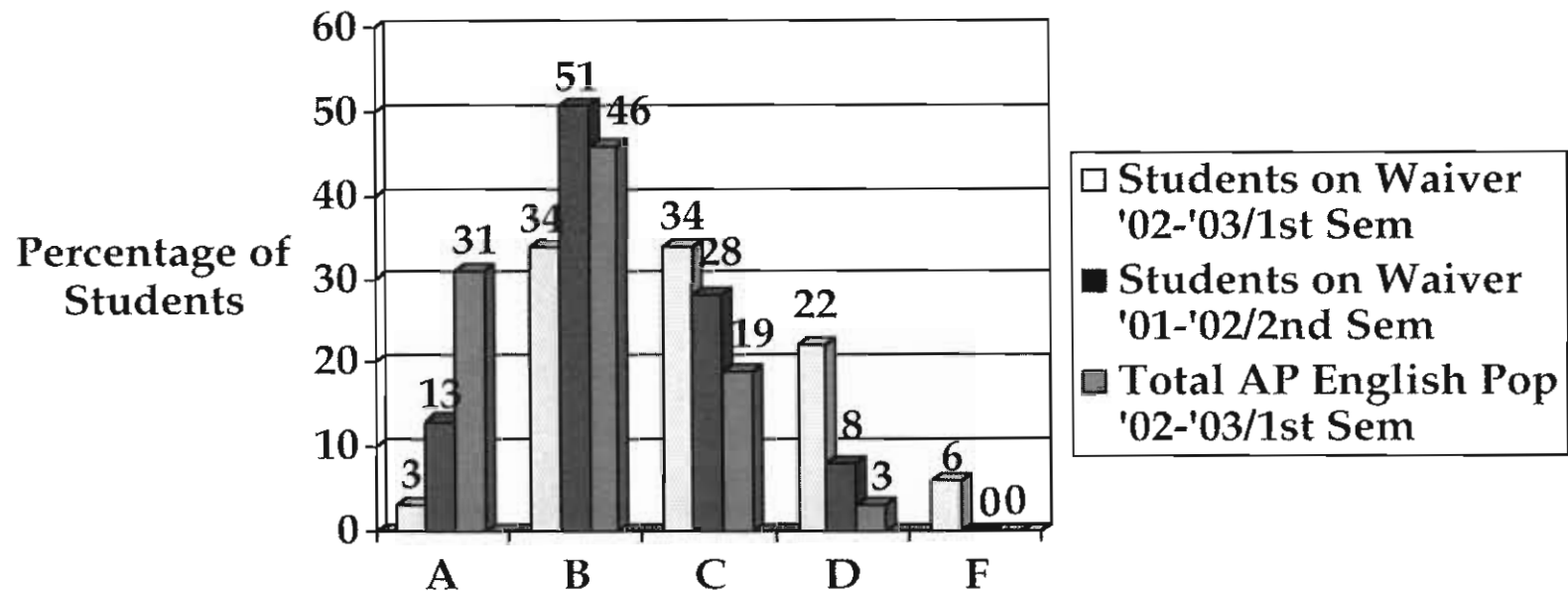
% of Exams scoring 4:
26% (18%)

% of exams scoring 5:
7% (5%)

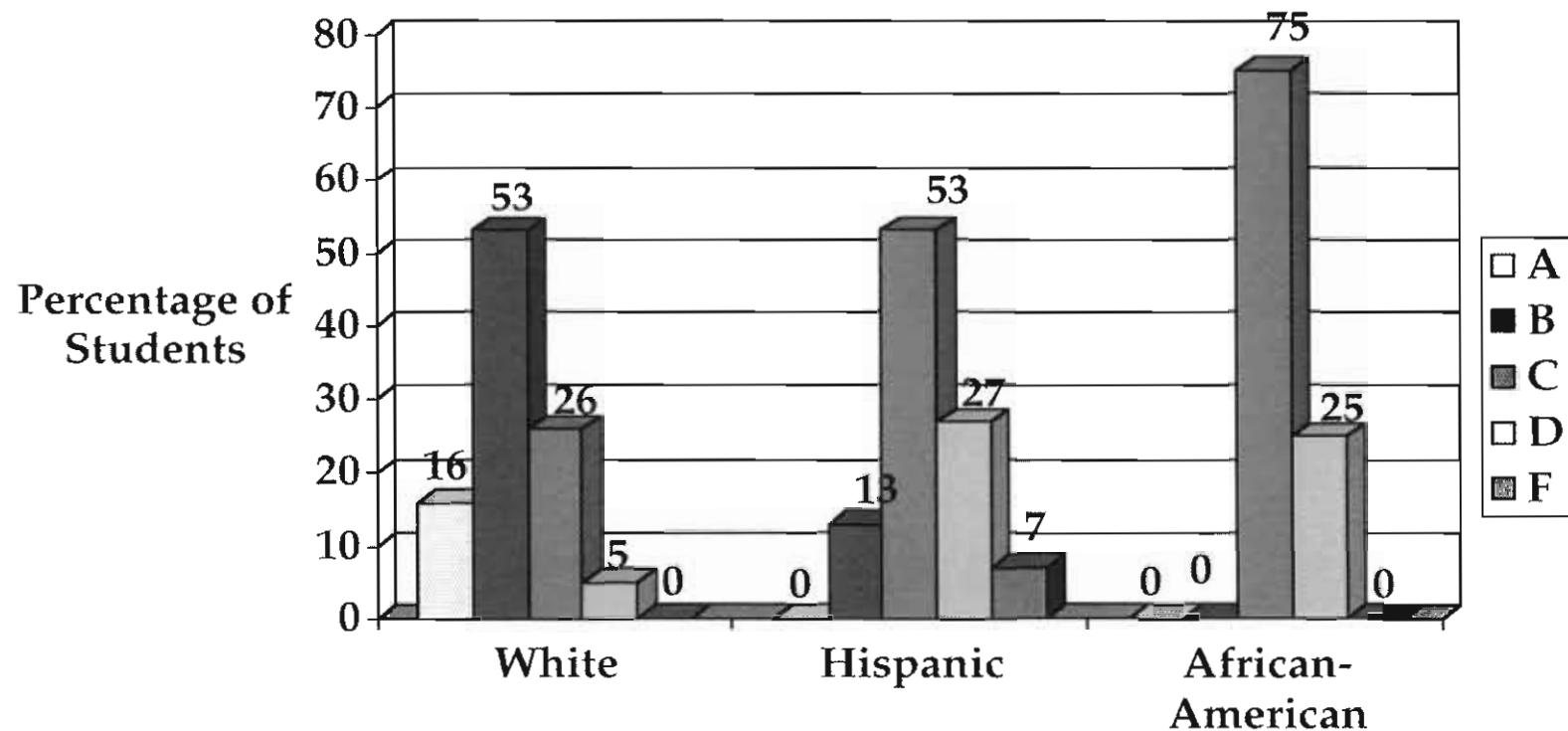
SAMO AP Participation (Waiver and Total)



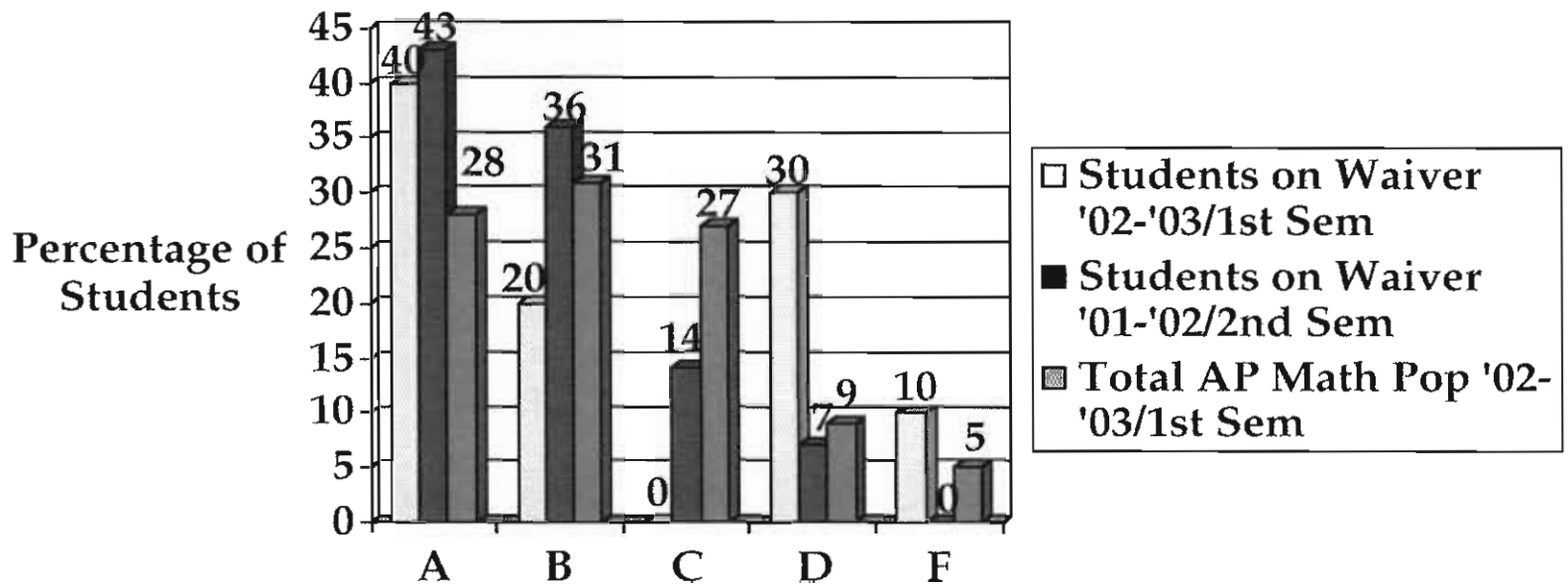
SAMO AP English Grades



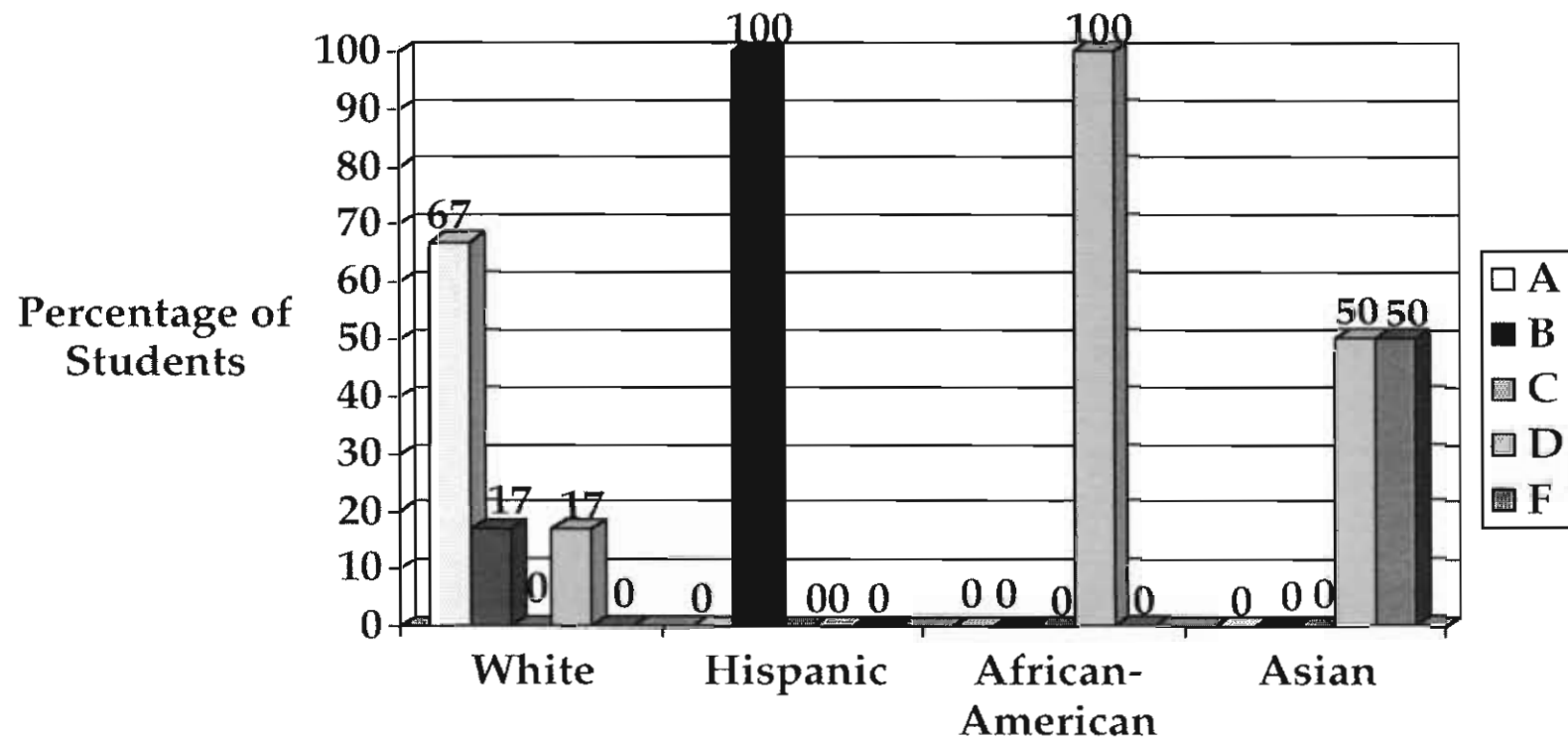
SAMO AP English Grades for Students on Waiver by Race/Ethnicity



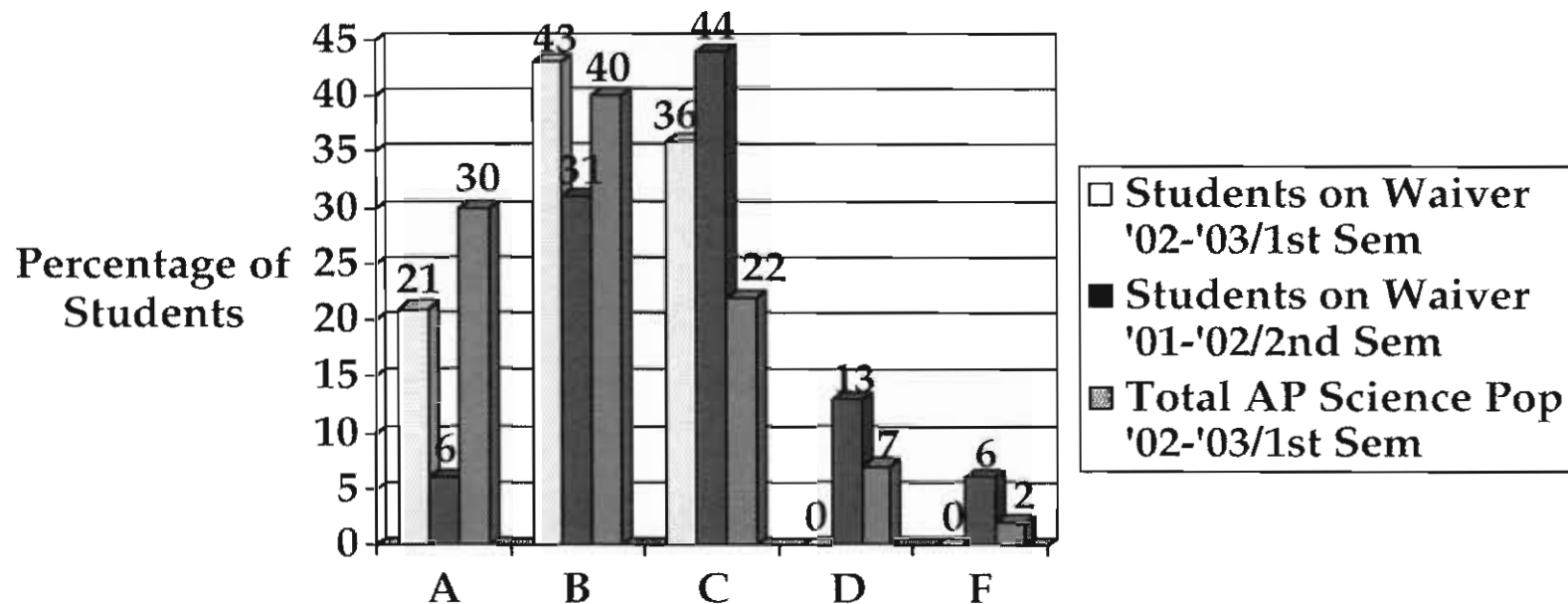
SAMO AP Math Grades



SAMO AP Math Grades for Students on Waiver by Race/Ethnicity



SAMO AP Science Grades



SAMO AP Exam Results

60% or greater pass rate:

Biology (82)
Calculus AB (94)
Calculus BC (100)
Chemistry (76)
Eng Lang Comp (62)
Eng Lit Comp (61)
Spanish Lang (98)
Spanish Lit (97)

Less than 60% pass rate:

Govt & Pol US (44)
Physics C-Mech (54)
Psychology (29)
Statistics (50)
US History (54)

SAMO offers students access to 22 AP courses. 13 (59%) of these courses had pass rates of 60% or greater.

MHS AP Exam Results

60% or greater pass rate:

Calculus AB (89)

Eng Lang Comp (69)

Eng Lit Comp (62)

Govt & Pol US (74)

Studio Art-2D Design (88)

US History (72)

Less than 60% pass rate:

Art History (47)

MHS offers students access to 14 AP courses. 9 (64%) of these courses had pass rates greater than 60%.

Continuous Improvement

- Each school needs to keep records of the students who enter a course via the waiver process on an Excel spreadsheet.
- To insure equitable access, each school and the district needs to actively publicize the fact that a waiver process exists and is open to every student.

Continuous Improvement

- **Professional Development for AP Faculty**

- Ensure all AP faculty have attended the training sessions offered by the College Board

Encourage AP faculty to be readers for the AP exams to familiarize themselves with the scoring and requirements for each score.

- Promote and provide resources for peer discussions regarding best practices between SAMO and MHS. Each site has clear strengths to share with the other.

Continuous Improvement

- **AP Lead Teacher**

- Ensure all AP teachers have the appropriate training for their subject area
- Promote and provide resources for peer discussions regarding best practices between SAMO and MHS. Each site has clear strengths to share with the other.
- Create vertical articulation teams with the middle schools
- Assist teachers new to AP in pacing to insure proper curriculum pacing to maximize student success on the exams
- Ensure that the school's AP program is on target to meet its 2007 goals for equity and excellence.

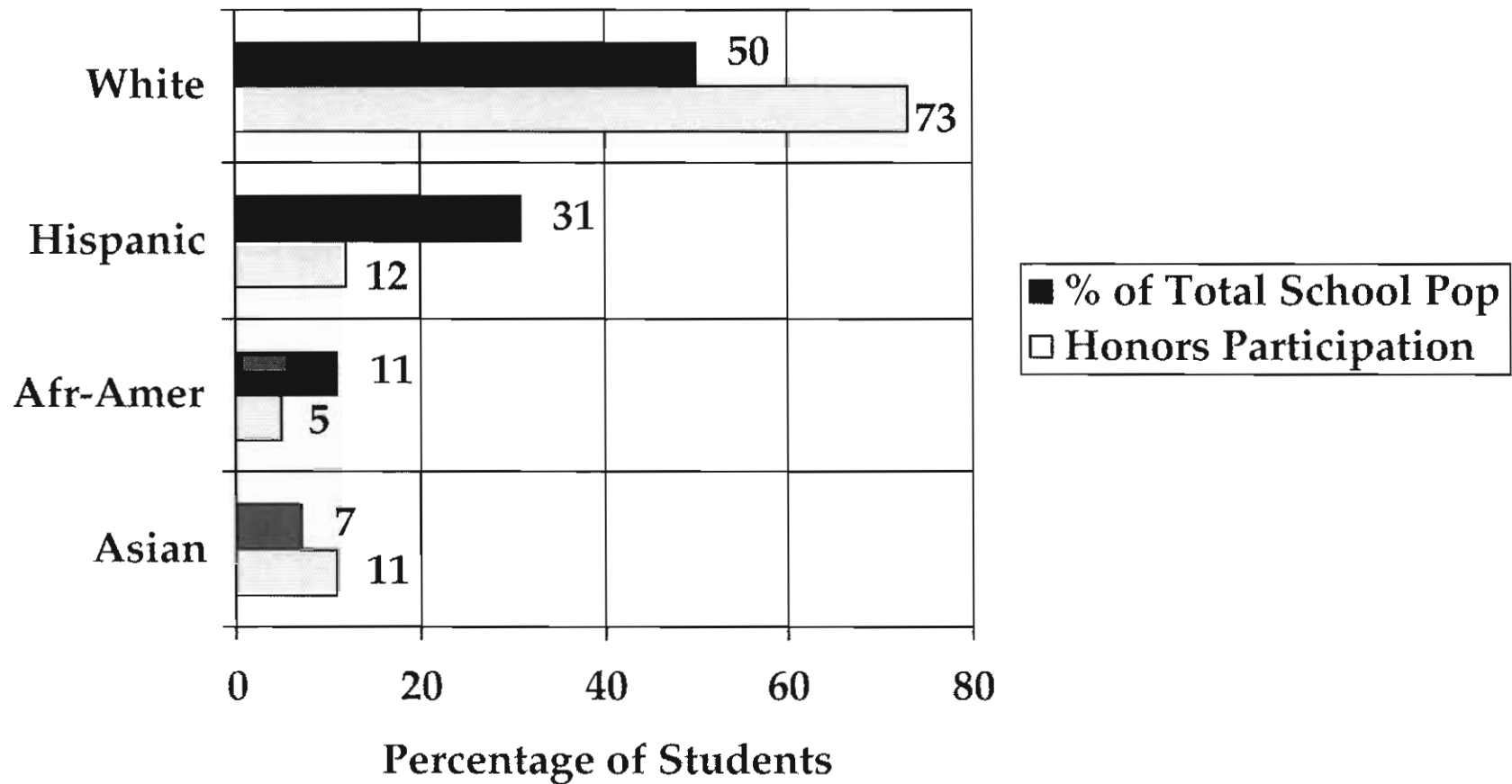
Continuous Improvement

- **Fund AVID 6-12**

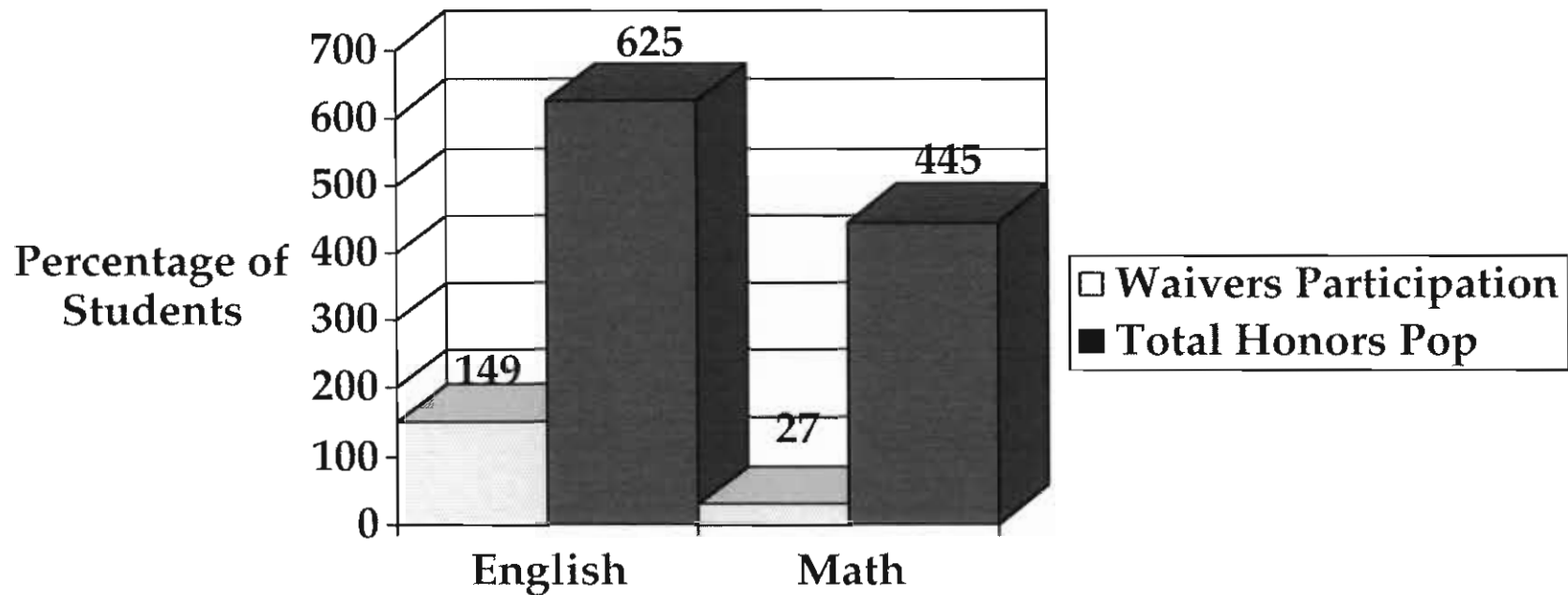
- This program has a history of success in assisting students in setting and achieving high goals
- The first semester results for the AVID program at JAMS are stellar. 93% of the students in the program are members of the AP target groups, and 59% qualify for free or reduced lunch. 93% are earning a C or better average and 54% are earning a B or better average.
- Review each of the three AVID programs we have in SMMUSD to determine the efficacy of each program to provide opportunities for AVID students to succeed in courses of increasing rigor.

Honors Program

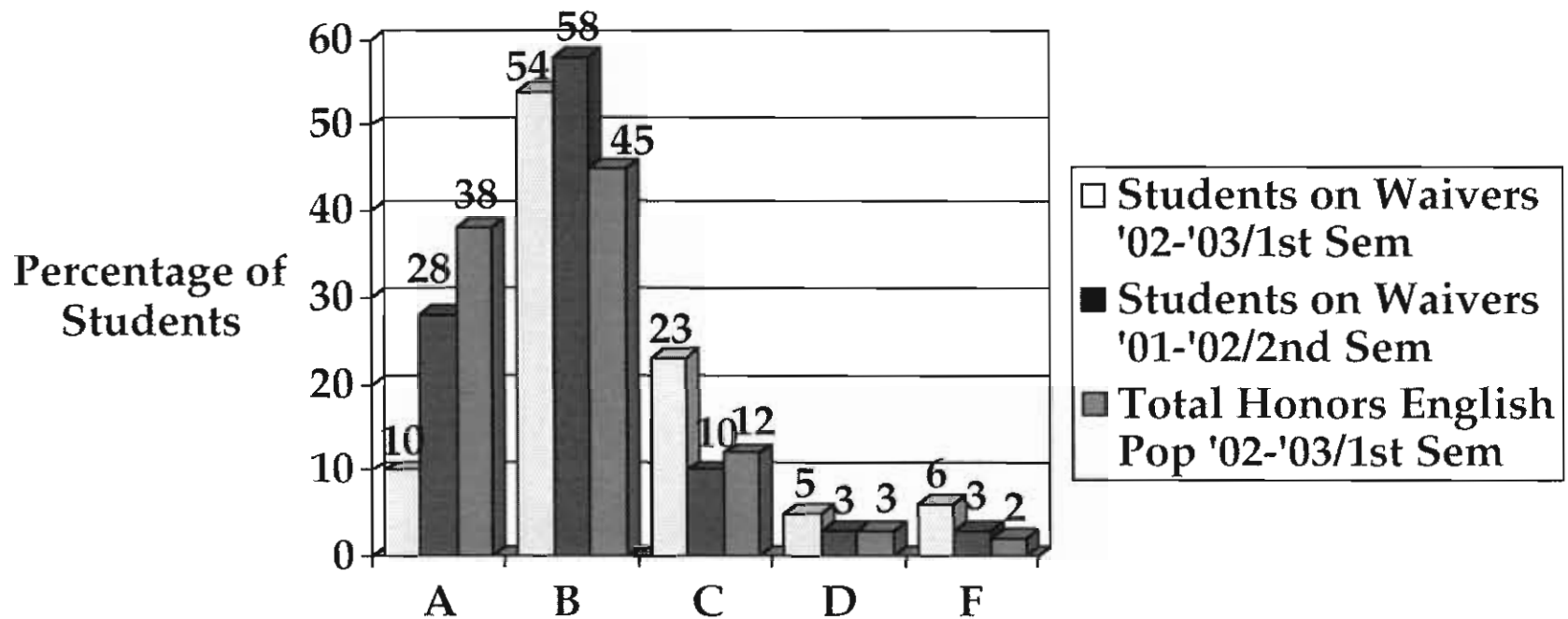
SAMO Honors Participation



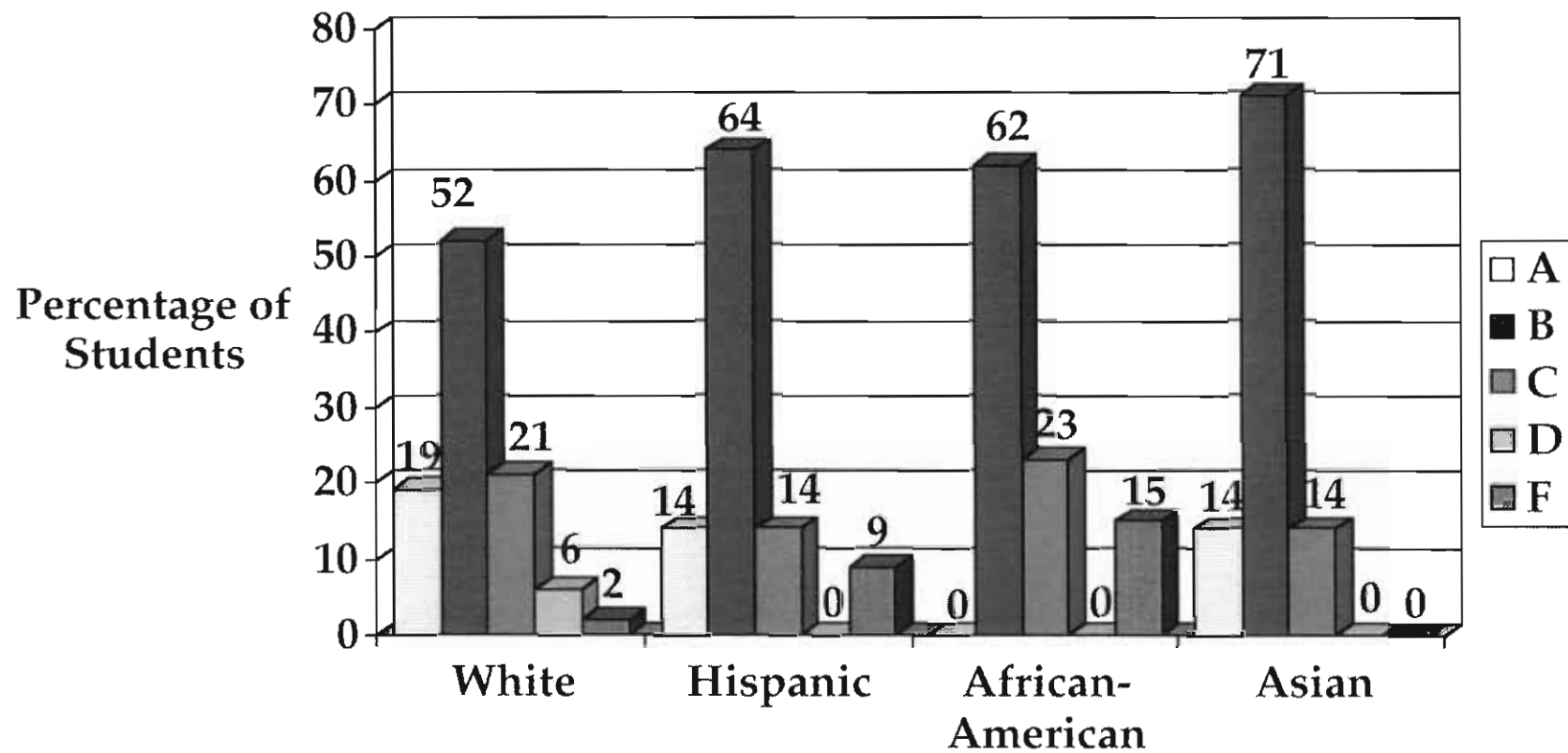
SAMO Honors Participation (Waiver and Total)



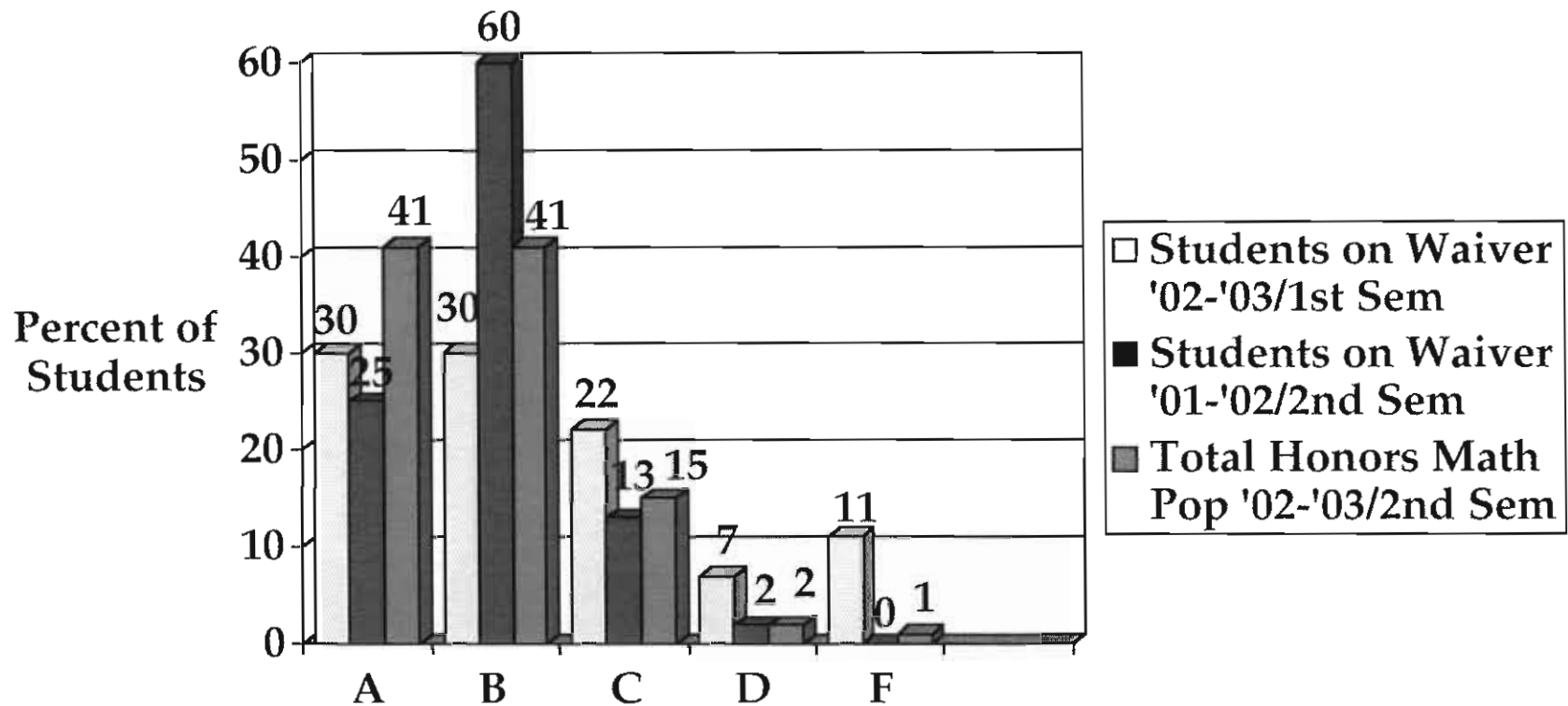
SAMO English Honors Grades



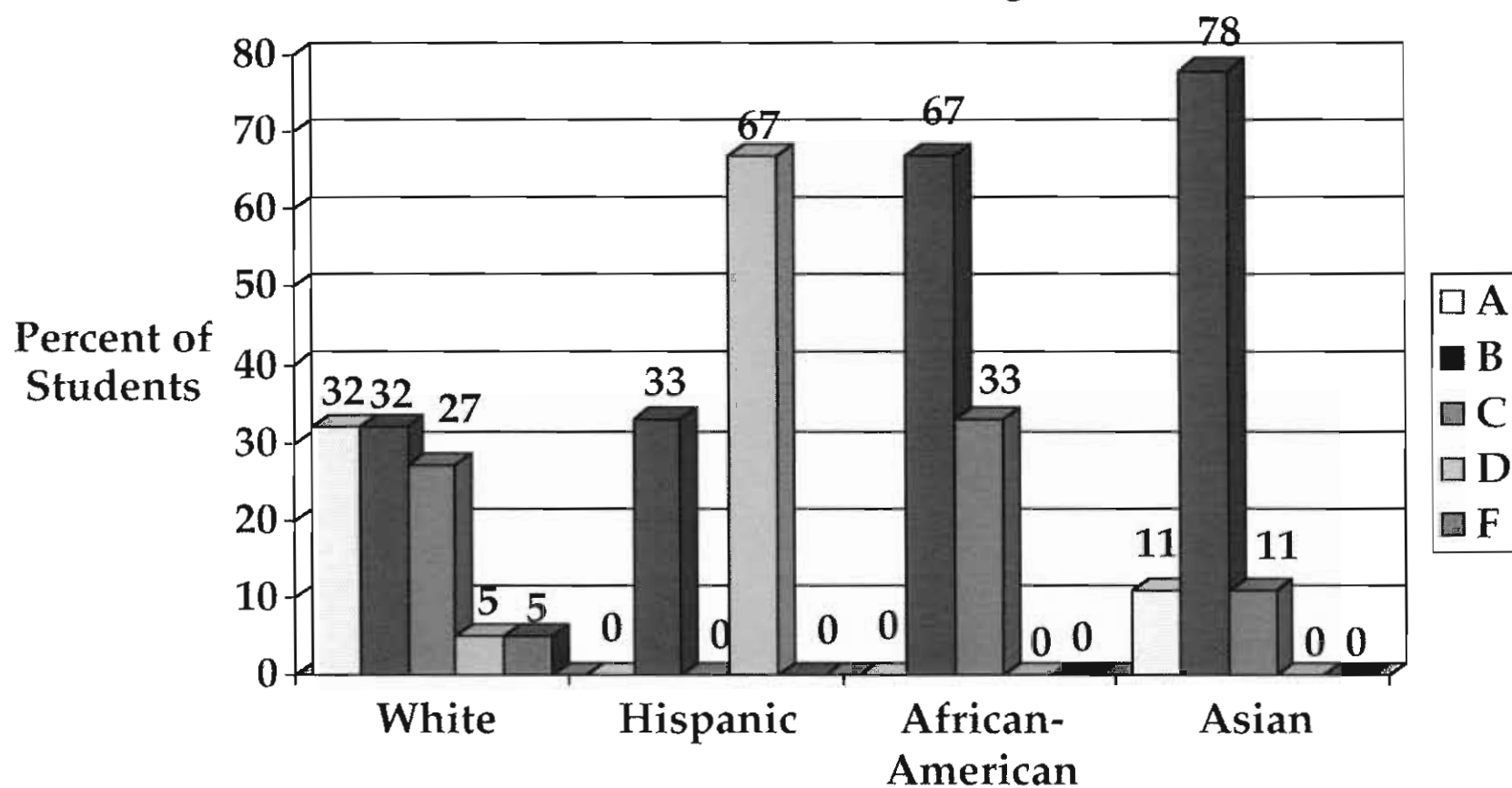
SAMO English Honors Grades for Students on Waiver and by Race/Ethnicity



SAMO Math Honors Grades



SAMO Math Honors Grades for Students on Waiver and by Race/Ethnicity



SAMO Grade Comparisons

- 84% of students waiving into courses received grades of A, B or C
- 96% of all students in the Honors Program received grades of A, B or C
- Students choosing the rigor of an honors course are extremely likely to be successful whether they have been recommended for the program or have self-selected the program through the waiver process.

The Question

Is it possible to increase access to rigorous curriculum, while maintaining or improving a program's level of excellence?