

Santa Monica-Malibu Unified School District



SANTA MONICA-MALIBU UNIFIED SCHOOL DISTRICT



Citizens' Bond Oversight Committee

2013-2014 Annual Report



ANNUAL REPORT 2013-2014

Submitted to the
Santa Monica-Malibu Unified School District
Board of Education

Maria Leon-Vazquez, President
Ralph Mechur, Vice President
Ben Allen
Oscar de la Torre
Jose Escarce
Laurie Lieberman
Nimish Patel

Citizens' Bond Oversight Committee 2013-2014

Charlie Yen, Chair
Gordon Lee, Vice Chair
Debbie Mulvaney
Marianne Riggins
Steven Rodman
Barry Seid
Lori Whitesell

Staff Support

Janece Maez, Chief Financial Officer, Associate Superintendent
Stuart Sam, Director of Facilities Improvement



Table of Contents

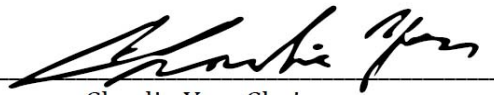
	Page No.
Statement of Compliance.....	3
Citizens' Bond Oversight Committee Proceedings and Activities.....	4
Minutes of Meeting.....	5
Measure BB Building Fund Summary.....	11
Measure BB Project Budget, Expenditures, Remaining, and Status.....	12
Measure BB Project Expenditures Detail.....	14
Measure BB: Safety and Security Projects.....	46
Measure BB: Major Construction and Modernization Projects.....	57



STATEMENT OF COMPLIANCE
MEASURE BB FUNDS

This Annual Report is submitted to the Board of Education by the Santa Monica-Malibu Unified School District Citizens' Bond Oversight Committee.

The Committee advises that, to the best of its knowledge, the Santa Monica-Malibu Unified School District is in compliance with the requirements in Article XIII A, Section 1(b)(3) of the California Constitution. In particular, bond revenue has been expended only for the purposes so described in Measure BB and no funds were used for any teacher or administrative salaries or other operating expenses as prohibited by Article XIII A, Section 1(b)(3)(a) of the California Constitution.

Respectfully Submitted: 
Charlie Yen, Chair
Citizens' Bond Oversight Committee

Date: August 3, 2015



CITIZENS' BOND OVERSIGHT COMMITTEE **PROCEEDINGS AND ACTIVITIES**

Meetings of the Citizens' Bond Oversight Committee

The Committee conducts its meetings in accordance with provisions of the Ralph M. Brown Public Meetings Act, Government Code Sections 54950 *et seq.* Meeting notices and agendas are sent to members of the Committee within the required period of time and are also posted at Santa Monica-Malibu Unified School District campus locations.

Meeting notices, agendas, minutes and all documents and reports received by the Committee members are a matter of public record and made available on the SMMUSD website: <http://www.smmusd.org/measureBB/CitizensOversight/index.html>

The SMMUSD Bond Program website is located at: <http://fip.smmusd.org/>

Minutes of meetings are included on the following pages.



Minutes
July 29, 2013
SMMUSD

Measure BB Citizens' Bond Oversight Committee
Location: District Office – Board Conference
Room
1651 16th Street, Santa Monica, CA 90404

Attendance:

Committee Members: Steven Rodman, Barry Seid, Marianne Riggins, Charlie Yen

Staff: Jan Maez

Board Liaisons: Laurie Lieberman

- I. Call to Order:
 - i. Chair Yen called the meeting to order at 4:05p.m.

- II. Approval of Minutes: May 20, 2013`
 - i. Upon motion made by Mr. Seid and seconded by Mr. Rodman, the minutes of the May 20, 2013 meeting were voted upon. The results of the vote was 3 ayes – 0 noes – 1 abstention. As the ayes did not represent a majority of the committee, the May minutes will return to the next; meeting for approval.

- III. Public Comments:
 - i. No comments were made from the public.

- IV. Update from Chief Financial Officer: (*Janece L. Maez, Chief Financial Officer*)
 - i. Ms. Maez reviewed the current status of projects within the program. Mr. Yen suggested a format similar to the one used by Santa Monica Community College for presentation of information. Ms. Maez will work with Mr. Sam and his staff on this and return to the next meeting with a revised format.
 - ii. Ms. Maez distributed the 2011-12 Annual Report to the committee for review.

- V. Old Business: None

- VI. New Business:
 - i. Ms. Maez briefly described the impact of Prop 39 on the bond program stating that Prop 39 funds should be able to enhance the sustainability efforts in the District.
 - ii. Ms. Maez informed the committee of the recent legislative changes that occurred regarding the use of Capital Appreciation Bonds in bond programs. She indicated that the district has used this type of financing in the past on a very limited basis. All previous uses of this type of financing

would have complied with the new legislation so she didn't predict issues as a result.

VII. Next meeting:

- i. It was determined that the next meeting of the committee will be held on October 20, 2013.

VIII. Adjournment: The meeting adjourned at 5:15 p.m.



Minutes
December 9, 2013
SMMUSD

Measure BB Citizens' Bond Oversight Committee
Location: Facilities Improvement Projects (FIP) Office
2828 4th Street, Santa Monica, CA 90405

Attendance:

Committee Members: Steven Rodman, Barry Seid, Gordon Lee, Debbie Mulvaney
Charlie Yen Staff: Jan
Maez Board Liaisons:

- I. Call to Order:
 - i. Chair Yen called the meeting to order at 4:15 p.m.

- II. Approval of Minutes: May 20, 2013 and July 29, 2013
 - i. Upon motion made by Mr. Lee and seconded by Mr. Seid, the minutes of the May 20, 2013 and July 29, 2013 meetings were voted upon. The minutes were approved as presented by a unanimous vote.

- III. Public Comments:
 - i. No comments were made from the public.

- IV. Update from Chief Financial Officer: (*Janece L. Maez, Chief Financial Officer*)
 - i. Ms. Maez reviewed the current status of projects within the program. She presented the financial information in a new, revised format. The committee members appreciated the new reporting format and asked that they would continue to receive information in this manner.
 - ii. The committee would like to compare the last audit report to the one currently being prepared. If available, Ms. Maez will ask the auditors to attend the next meeting of the committee to discuss the 2012-13 audit.

- V. Old Business: None

- VI. New Business: None

- VII. Next meeting:
 - i. It was determined that the next meeting of the committee will be held on January 27, 2014.

- VIII. Adjournment: Upon motion by Mr. Lee and second by Ms. Mulvaney with a unanimous vote the meeting adjourned at 5:20 p.m.



Minutes
January 27, 2014
SMMUSD

**Measure BB Citizens' Bond Oversight Committee Location:
District Office – Board Conference Room
1651 16th Street, Santa Monica, CA 90404**

Attendance:

Committee Members: Steven Rodman, Barry Seid, Gordon Lee, Lori Whitesell, Charlie Yen

Staff: Jan Maez, Stuart Sam

Board Liaisons: Ben Allen, Laurie Lieberman

- I. Call to Order:
 - a. Chair Yen called the meeting to order at 4:07 p.m.
- II. Approval of Minutes: December 9, 2013
 - a. Upon motion made by Mr. Lee and seconded by Mr. Rodman, the minutes of the December 9, 2013 were voted upon. The minutes were approved as presented by a vote of 4-0-1 (Ayes: Rodman, Seid, Lee, Yen; Noes: none; Abstain: Whitesell).
- III. Public Comments:
 - a. No comments were made from the public.
- IV. Update from Chief Financial Officer: (*Janece L. Maez, Chief Financial Officer*)
 - a. Ms. Maez two reports to the Committee as of 6/30/13. The first report listed the detail of vendor payments by project location. The second report was also by project location in a more summary format.
 - b. Ms. Maez also presented the Committee with the draft 2012-13 Audit Report. It was requested that the district auditors attend a future meeting to allow for discussion with the Committee. Mr. Rodman questioned some of the numbers reported on Series A of the bond. Staff will check with our financial advisors at Keygent for an explanation.
- V. Old Business: None
- VI. New Business:
 - a. The Committee discussed the preparation of the 2012-13 annual report. It was agreed that Mr. Yen would prepare a draft to present to the full Committee prior to submitting to the Board of Education. Mr. Yen asked for information from staff to assist in the preparation of a draft document. Ms. Maez indicated that the staff of the BB office will support his efforts.
- VII. Next meeting:
 - a. It was determined that the next meeting of the committee originally scheduled for April 28, 2014 needed to be rescheduled
 - b. When the special meeting for the audit is scheduled, staff will inform the full Committee.
- VIII. Adjournment:
 - a. Upon motion by Mr. Lee and second by Mr. Seid with a unanimous vote the meeting adjourned at 5:30 p.m.



Minutes
February 24, 2014
SMMUSD

**Measure BB Citizens' Bond Oversight Committee Location:
District Office – Board Conference Room
1651 16th Street, Santa Monica, CA 90404**

Attendance:

Committee Members: Steven Rodman, Barry Seid, Gordon Lee, Debbie Mulvaney, Marianne Riggins, Charlie Yen

Staff: Jan Maez

Board Liaisons: Nimish Patel

I. Call to Order:

- a. Chair Yen called the meeting to order at 4:00 p.m.

II. Approval of Minutes:

- a. None

III. Public Comments:

- a. No comments were made from the public.

IV. Update from Chief Financial Officer: (*Janece L. Maez, Chief Financial Officer*)

- a. None

V. Old Business:

- a. The Committee discussed the 2012-13 with the Sarah Fiehler of Christy White Accountancy and reviewed the corrected copy of the audit that will be presented to the Board of Education. Committee members were able to get answers to questions about the report. Ms. Fiehler was able to describe how the audit firm select expenditures for testing. She explained the change in language from what was once known as an Unqualified report to what is now referred to as an Unmodified report. She explained that this was the highest opinion that auditors could assign.
- b. The Committee continued their discussion of the annual report process and look forward to a draft report at the next meeting.

VI. New Business:

- a. None

VII. Next meeting:

- a. It was determined that the next meeting of the committee will be on April 21, 2014.

VIII. Adjournment:

- a. Upon motion by Mr. Lee and second by Mr. Seid with a unanimous vote the meeting adjourned at 5:35 p.m.



Minutes
April 21, 2014
SMMUSD

Measure BB Citizens' Bond Oversight Committee Location:
District Office – Board Conference Room
1651 16th Street, Santa Monica, CA 90404

Attendance:

Committee Members: Steven Rodman, Barry Seid, Gordon Lee, Debbie Mulvaney, Marianne Riggins, Charlie Yen, Lori Whitesell

Staff: Jan Maez

Board Liaisons: None

I. Call to Order:

- a. Chair Yen called the meeting to order at 4:05 p.m.

II. Approval of Minutes:

- a. Minutes of January 27, 2014 and February 24, 2014 were approved unanimously (7 Ayes – 0 Noes).

III. Public Comments:

- a. No comments were made from the public.

IV. Update from Chief Financial Officer: (*Janece L. Maez, Chief Financial Officer*)

- a. None

V. Old Business:

- a. The Committee received a draft of the annual report covering a two year period. The fiscal years presented in the report include 2011-12 and 2012-13. After some discussion and a couple of minor modifications the report was accepted, upon motion of Mr. Seid and second by Mr. Rodman, followed by a unanimous vote of the Committee (7 Ayes – 0 Noes). Ms. Maez indicated that the report will be placed on the May 15, 2014 Board of Education agenda. Committee members complimented and expressed gratitude to Mr. Yen on his work pulling the report together for the two years.

VI. New Business:

- a. The Committee asked Ms. Maez to suggest and bring back to the meeting a calendar of meeting dates for the 2014-15 fiscal year.
- b. The Committee discussed the election of Chair for 2014-15. Upon motion made by Ms. Mulvaney, seconded by Ms. Riggins (7 Ayes – 0 Noes) the Committee voted to keep the leadership of the Committee unchanged. Mr. Yen agreed to accept the position for another year.

VII. Next meeting:

- a. It was determined that the next meeting of the committee will be on August 11 , 2014.

VIII. Adjournment:

- a. Upon motion by Mr. Lee and second by Mr. Seid with a unanimous vote the meeting adjourned at 5:00 p.m.

Measure BB
Building Fund Summary
2013-2014

Issuances

Measure BB \$268,000,000	
Issuance	Amount
October 2007	\$60,000,000
August 2009	\$60,000,000
July 2010	\$65,000,000
March 2013	\$82,995,327
Total	\$267,995,327

Revenues

Revenues as of June 30, 2014			
	Interest Income	Premiums and Other Financing Sources	Total Revenue
07-08	\$1,879,367	\$0	\$1,879,367
08-09	\$1,509,349	\$0	\$1,509,349
09-10	\$1,241,030	\$676,410	\$1,917,440
10-11	\$1,791,318	\$796,244	\$2,587,562
11-12	\$1,128,149	\$0	\$1,128,149
12-13	\$582,005	\$0	\$712,005
13-14	\$590,370	\$453,880	\$1,044,250
Total	\$8,721,588	\$1,926,534	\$10,648,122

Expenditures

Expenditures as of June 30, 2014	
07-08	\$6,675,505
08-09	\$20,940,590
09-10	\$20,024,760
10-11	\$16,684,835
11-12	\$40,691,836
12-13	\$59,618,526
13-14	\$48,359,595
Total	\$212,995,647

Summary

As of June 30, 2014	
Total Issuance	\$267,995,327
Total Revenue	\$10,648,122
Total Expenditure	\$212,995,647
Total Remaining	\$65,647,802



Measure BB
Budget, Expenditures, Remaining, and Status
As of June 30, 2014

	BB Fund Budget	BB Revenues	Other Sources Budget**	Expenditures	BB Fund Remaining	Project Remaining	Status
Cabrillo	\$578,018.00			\$572,213.26	\$5,804.74	\$5,804.74	Close-out
Edison	\$52,809,925.00	\$126,594.50	\$3,500,000.00	\$51,393,446.14	\$1,416,479.86	\$5,043,073.36	In Construction
Franklin	\$250,691.00			\$250,233.85	\$457.15	\$457.15	Schematic Only
Grant	\$589,663.00			\$586,242.83	\$3,420.17	\$3,420.17	Completed
John Adams	\$26,062,289.00	\$327,285.00	\$2,500,000.00	\$25,014,218.08	\$1,048,070.92	\$3,875,355.92	Close-out
Lincoln	\$31,613,203.00			\$29,120,241.09	\$2,492,961.91	\$2,492,961.91	In Construction
Malibu HS	\$50,567,695.00			\$15,395,693.48	\$35,172,001.52	\$35,172,001.52	In Planning - Some components completed
McKinley	\$1,411,333.00			\$1,388,757.04	\$22,575.96	\$22,575.96	Completed
Olympic HS	\$8,791,003.00			\$2,404,267.73	\$6,386,735.27	\$6,386,735.27	In Construction
Point Dume	\$1,172,756.00			\$1,123,328.19	\$49,427.81	\$49,427.81	Close-out
Roosevelt	\$365,732.00			\$365,731.28	\$0.72	\$0.72	Schematic Only
SAMOHI	\$76,342,109.00		\$4,000,000.00	\$67,604,975.57	\$8,737,133.43	\$12,737,133.43	In Construction
SMASH & John Muir	\$239,099.00			\$235,099.47	\$3,999.53	\$3,999.53	Close-out
Washington West	\$2,435,358.00			\$2,120,702.66	\$314,655.34	\$314,655.34	In Construction
Webster	\$2,578,309.00			\$1,300,623.49	\$1,277,685.51	\$1,277,685.51	In Construction
Will Rogers	\$447,074.00			\$438,217.38	\$8,856.62	\$8,856.62	Close-out
Technology	\$5,890,294.00	\$7,071,609.00		\$12,084,411.41	\$0.00	\$877,491.59	Completed
Debt Services	\$0.00	\$1,597,244.44		\$1,597,244.44	\$0.00	\$0.00	
BB Centralized & DSA Closeout	\$1,246,663.00				\$1,246,663.00	\$1,246,663.00	
Program Reserve Unallocated	\$43,028.00	\$1,525,390.00			\$43,028.00	\$1,568,418.00	
Program Reserve Allocated	\$4,565,758.00					\$4,565,758.00	
Program Reserve Contingency			\$15,000,000.00		\$0.00	\$15,000,000.00	
Program Reserve Contingency Reduction			(\$15,000,000.00)		\$0.00	(\$15,000,000.00)	
Total	\$268,000,000.00*	\$10,648,122.94	\$10,000,000.00	\$212,995,647.39	\$65,652,476.55	\$75,652,475.55	

*\$268,000,000 is the voters approved amount, which is \$4,673 higher than the total issuance amount.

** Developer's Fees

Measure BB
Balance Sheet
2013-2014

BALANCE SHEET	
Measure BB Bond Issuance	\$267,995,327
Interest & Premiums (Revenues)	\$10,648,122
Total Measure BB Funds Available	\$278,643,450
Expenditure as of 06/30/2014	(\$212,995,647)
Total BB Cash available as of 06/30/2014	\$65,647,802
Remaining Budget Balance	\$75,652,475
Deduct Other Sources	(\$10,000,000)
Series D received less	(\$4,673)
BB Cash on hand	\$65,647,802

FUNDING FOR THE PROJECT	
Bond Proceeds	\$267,995,327
Developer's Fees	\$10,000,000
COP's	\$15,000,000
Bond Interest and Premiums	\$10,648,123
Reduction in Funding	(\$15,000,000)
Total Project Funding	\$288,643,450



Measure BB
Project Expenditures Detail
As of June 30, 2014

Expenditures Detail Summary

	07-08	08-09	09-10	10-11	11-12	12-13	13-14	Total
Cabrillo	\$135,567.25	\$94,420.43	\$21,235.93	\$315,989.93	\$18,778.48	(\$14,448.65)	\$669.89	\$572,213.26
Edison	\$861,943.47	\$3,351,957.76	\$5,192,051.49	\$2,627,966.88	\$9,930,008.52	\$16,748,569.40	\$12,680,947.62	\$51,393,445.14
Franklin	\$196,225.83	\$11,256.50	\$244.87	\$9,998.45	\$31,115.37	\$1,392.83	\$0.00	\$250,233.85
Grant	\$116,972.04	\$53,785.07	\$118,611.50	\$280,472.29	\$14,645.63	\$1,756.30	\$0.00	\$586,242.83
John Adams	\$477,143.41	\$1,820,776.81	\$1,473,650.73	\$2,830,726.42	\$8,210,069.21	\$8,875,463.40	\$1,326,388.10	\$25,014,218.08
Lincoln	\$626,484.74	\$1,909,549.82	\$1,059,672.51	\$2,761,662.81	\$3,621,023.35	\$5,923,883.08	\$13,217,964.78	\$29,120,241.09
Malibu HS	\$1,161,540.14	\$2,879,860.48	\$3,340,046.03	\$1,472,679.79	\$3,503,847.26	\$1,430,724.62	\$1,606,995.16	\$15,395,693.48
McKinley	\$267,693.28	\$89,084.71	\$26,215.17	\$159,368.82	\$743,224.60	\$102,051.79	\$1,118.67	\$1,388,757.04
Olympic HS	\$149,465.82	\$403,060.59	\$579,664.19	\$327,877.79	\$194,762.47	\$210,465.70	\$538,971.17	\$2,404,267.73
Point Dume	\$59,291.20	\$134,738.17	\$161,716.07	\$262,565.62	\$499,138.24	\$5,878.89	\$0.00	\$1,123,328.19
Roosevelt	\$268,570.13	\$80,447.00	\$3,445.25	\$485.00	\$12,212.88	\$571.02	\$0.00	\$365,731.28
SAMOHI	\$1,895,833.22	\$4,426,082.83	\$4,183,874.05	\$1,874,584.02	\$12,069,682.42	\$24,422,522.24	\$18,732,396.79	\$67,604,975.57
SMASH/Muir	\$72,225.71	\$13,278.46	\$11,416.14	\$131,778.10	\$5,445.31	\$742.64	\$213.11	\$235,099.47
Washington West	\$81,908.77	\$177,363.10	\$180,460.57	\$66,271.94	\$119,767.55	\$1,455,553.57	\$39,377.16	\$2,120,702.66
Webster	\$79,241.49	\$188,156.65	\$266,428.87	\$536,944.24	\$42,812.75	\$130,339.05	\$56,700.44	\$1,300,623.49
Will Rogers	\$90,493.00	\$29,282.13	\$69,863.89	\$225,721.14	\$19,072.52	\$3,784.70	\$0.00	\$438,217.38
Data Center	\$0.00	\$2,235.50	\$86,084.90	\$534,674.29	(\$502,703.43)	\$9,169.25	\$0.00	\$129,460.51
Technology	\$114,234.75	\$5,264,269.71	\$2,665,162.70	\$2,037,388.31	\$1,656,229.03	\$189,275.53	\$157,851.38	\$11,954,950.90
Debt Services	\$20,671.25	\$13,219.50	\$671,000.00	\$762,353.69	\$0.00	\$130,000.00	\$0.00	\$1,597,244.44
Total	\$6,675,505.50	\$20,940,589.72	\$20,024,759.96	\$16,684,835.24	\$40,691,835.59	\$59,618,526.11	\$48,359,595.27	\$212,995,647.39

ACTUAL EXPENSES BY SCHOOL SITE

CABRILLO ELEMENTARY SCHOOL

RESOURCE - 00000/90500

VENDOR	DESCRIPTION OF SERVICES	07-08 Expenses Fund 21	08-09 Expenses Fund 21	09-10 Expenses Fund 21	10-11 Expenses Fund 21	11-12 Expenses Fund 21	12-13 Expenses Fund 21	13-14 Expenses Fund 21	Total Expenses
American Reprographics	Blue Prints			5.49	583.53				589.02
ATC	Hazardous Material Investigation			1,984.00	200				2,184.00
Atkins (PBS&J)	CEQA Environmental		638.25	359.75	22,832.00		(22,832.00)		998.00
BTC Lab	Inspection Services						2,875.30		2,875.30
C & W Construction	Safety Project - Gate & Fence				145,224.19				145,224.19
CY Carlberg	Arborist Services				450				450
Daily Breeze	Advertisement				228.47				228.47
Division of State Architect	DSA			1,740.00	589.82	(94.96)	817.01		3,051.87
HMC	Architectural Design	135,567.25	58,783.40	13,918.50	14,584.26			669.89	223,523.30
Jane Buelow	Outreach - Newsletter				569.5				569.50
Knowland Inc	Inspection Services					9,800.00			9,800.00
Parsons	CM Cost				127,285.32	764.73			128,050.05
Parsons	Commissioning					(426.33)			(426.33)
Parsons	DSA Closeout					8,735.04	4,691.04		13,426.08
PSOMAS	Aerial Photography & Digital Mapping		10,000.00						10,000.00
Sir Speedy	Printing				107.56				107.56
Centralized Cost Allocation			24,998.78	3,228.19	3,335.28				31,562.25
TOTAL		135,567.25	94,420.43	21,235.93	315,989.93	18,778.48	(14,448.65)	669.89	572,213.26

* 07-08 does not match with QSS because the distribution between schools were done incorrectly. Net difference between all schools is zero.

ACTUAL EXPENSES BY SCHOOL SITE
EDISON ELEMENTARY SCHOOL
RESOURCE - 0000/90500

VENDOR	DESCRIPTION OF SERVICES	07-08 Expenses Fund 21	08-09 Expenses Fund 21	09-10 Expenses Fund 21	10-11 Expenses Fund 21	11-12 Expenses Fund 21	12-13 Expenses Fund 21	13-14 Expenses Fund 21	Total Expenses
AAA Flag	Banners					150.22			150.22
American Reprographics	Blue Prints			740.89	45,320.96	170.02	1,094.04	56.83	47,382.74
Apple	Computers - Tech FF&E						86,885.23	486,819.01	573,704.24
Arcadis (LFR)	Soil Testing & Analysis		79,686.54	3,107.81	1,873.21	32,673.50	882.52	35,018.36	153,241.94
AT&T	Relocatable - Cisco Equipment upgrade				3,622.90				3,622.90
ATC	Hazardous Material Investigation		16,709.25	6,995.00	560.00	4,871.00		1,800.00	30,935.25
B-Line	Electrical			1,400.00					1,400.00
Board Ups	Board Up two property			1,490.00					1,490.00
Box N Go	Four Storage Containers to store teaching Materials units during construction							1,283.00	1,283.00
BPI Inspection	Inspection Services for Modular Classroom Buildings				5,700.00				5,700.00
Budlong & Associates	Mechanical Engineering Services to Provide Solutions for HVAC Issues							2,700.00	2,700.00
California Geological Survey	Geohazard Reports			3,600.00					3,600.00
California Office	FF&E						50,320.32	73,654.01	123,974.33
CDW Government Inc	Technology FF&E							226,356.11	226,356.11
Chefs Toys	Cold Pan Serving Counter Cambro Model # VBRL5110-Low Heat Height							2,399.44	2,399.44
Christina Facio	District Consultant					3,737.70			3,737.70
Christopher Joseph	CEQA Environmental		123,963.59	5,476.22					129,439.81
City of Santa Monica	Plan Check Review			1,952.62		96,577.10	27,741.46		126,271.18
Cliff Spencer	FF&E							28,430.00	28,430.00
Crew Protection	Site Security for Construction							50,409.00	50,409.00
Crown Disposal	Waste Management					108,181.04	30,699.02	15,937.82	154,817.88
CY Carlberg	Arborist			9,360.00	10,530.00				19,890.00
Daily Breeze	Advertising			247.16	447.89	1,191.50			1,886.55
Daly Genik	Architectural Design	317,984.75	2,197,482.02	389,927.14	172,281.16	310,955.03	298,969.06	127,959.81	3,815,558.97
Daly Movers	Land Acquisition Cost			23,436.00	1,740.00				25,176.00
Del Richardson	Land Acquisition Cost			20,405.17	(8,405.17)				12,000.00
Demco Inc	FF&E							44,431.72	44,431.72
Digital Network	Technology FF&E							8,840.66	8,840.66
Diversified Metal Fabrication	FF&E							4,775.00	4,775.00
Division of State Architect	DSA Fees			168,469.03	589.72	493.14	(588.00)	372.40	169,336.29
Emanuel Unique Construction	Other Construction related Services							33,899.04	33,899.04
Fans	Edison Fans							2,354.01	2,354.01
Fastsigns	Site Parking Signage					1,585.88			1,585.88
Fast Track	Relocatable Project				130,221.53				130,221.53
Fedex	Postage					27.34			27.34
Fence Facts Rentals	Temporary Fencing - Edison/Rogers Relocables Project			546.00					546.00
Gaudet Design Group	Arborist					535.00		1,657.50	2,192.50
H C Olsen	Construction for Modular Classroom for Rogers Presch				310,817.40				310,817.40
Hernancez, Mary	Land Acquisition Cost			3,247.00					3,247.00

Home Depot (US Bank)	Portable Ice Maker purchase from Home Depot							195.11	195.11
Horowitz, Jeffrey (Owners Attorney)	Land Acquisition Cost			516,734.79					516,734.79
Hotsports Inc	PE Equipment					7,499.40			7,499.40
Humanscale	FF&E							11,779.80	11,779.80
Independent Construction	Inspection Services					130,863.50	167,875.00	168,112.00	466,850.50
Jane Buelow	Outreach - Newsletter				1,141.84	4,576.51	2,906.66	3,825.09	12,450.10
JJ Plumbing	Plumbing			400.00					400.00
Jones-Campbell	FF&E							135,759.63	135,759.63
KI	FF&E							78,071.67	78,071.67
King Relocation	Move of Classroom					17,018.71		64,544.31	81,563.02
Korade	Sewer Line & Ramp Relocation, extends fence, gates & poles & Other Construction Work				29,593.03	7,566.00		43,799.00	80,958.03
LA County Treasurer	Plan Approval Application			1,348.00					1,348.00
LA County Public Health	Plan Review					1,330.00		129.00	1,459.00
LA Opinion	Spanish Advertisement		3,852.00	496.00					4,348.00
LA Superior Court	Land Acquisition Cost			2,850,000.00					2,850,000.00
Lakeshore	FF&E					2,425.48		29,441.84	31,867.32
Leighton Consulting	Geotechnical & Testing Services		33,589.68	926.26	1,455.00	33,715.20	6,496.20	19,988.30	96,170.64
Li & Associates	Provide Structural/Engineering Review							2,355.00	2,355.00
Lucy Fairweather	Outreach - Newsletter						420.00	4,220.00	4,640.00
Meridian IT	Storage & Software for Transfer of Compass System to District Server							1,931.61	1,931.61
Mobile Modulares	Edison Relocateables Lease					30,965.48	10,478.00	8,866.00	11,284.00
Mobile Modulares	Purchase of Relocateables for Edison Preschool @ Rogers					152,570.00			152,570.00
Moving Expenses	Moving Expenses paid to District Employees & PE					7,703.99	510.00	7,073.03	20,404.59
MTGL	Testing & Inspection Services						126,503.75	157,632.28	90,511.00
Neil Perlmutter	Change Order Review & Mitigation				1,440.00	6,600.00		8,670.00	16,710.00
Networld Solution	Technology Consulting					1,125.00	18,000.00	39,285.00	58,410.00
Oliver World	Technology FF&E							7,436.47	7,436.47
Orbach, Huff	Legal Fees			96,962.00	18,366.00	14,549.11	1,451.50	4,506.25	135,834.86
Osborn	Architectural & Engineering Services			24,133.00	6,823.00				30,956.00
Pacific Office Supply	FF&E							142,447.20	142,447.20
Parsons	CM Cost				795,153.25	444,300.86	706,669.93	493,475.75	2,439,599.79
Parsons	Commissioning					35,950.52	121,644.93	99,214.52	256,809.97
Parsons	DSA Closeout					16,256.88	323.52		16,580.40
Parsons	General CM					79,055.05	87,384.40	164,417.33	330,856.78
Parsons	Reimbursable						77,702.43	139,335.23	217,037.66
Pico Lanai CP II	Offsite Parking					44,400.00	57,600.00	75,960.00	177,960.00
PSOMAS	Aerial Photography & Digital Mapping	23,785.34	16,019.46	35,278.82		2,636.58			77,720.20
Quantum	FF&E							1,585.76	1,585.76
Quick Crete Products	Virginia Avenue Planters							8,616.46	8,616.46
Raffi's Metal	Construct & Repair Safety Items							43,650.00	43,650.00
R S Plumbing	Investigation & Confirmation of Sewer Lines					1,080.00			1,080.00
Ricoh	Edison Copier & Maintenance							24,237.26	24,237.26

Robert Lowe	Offsite Parking & District Consultant						2,981.25	32,362.50	35,343.75
Sams Iron Works	Provide & Install Site Requested Ornamental Metal Safety Features Phase I							24,435.00	24,435.00
Samsung Fixture	FF&E							4,332.75	4,332.75
Santa Monica Daily Press	Advertising				142.00				142.00
School Speciality	FF&E							1,006.33	1,006.33
Sears (US Bank)	FF&E							2,998.50	2,998.50
Sehi Computer Product	Edison Printer Toner, Cartridge and Drum Unit & Technology FF&E							23,316.75	23,316.75
Senna Tree	Tree Relocation		7,850.00	5,650.00	7,310.00				20,810.00
Simplex Grinnell	Fire & Security Equipment			69,738.09			335,550.25	171,055.48	576,343.82
Sir Speedy	Printing			241.89					241.89
Simpson & Simpson	District Consultant					4,330.86	59,378.37	75,372.16	139,081.39
Southbay Landscaping	Tree Removal & Other Construction Related Work					1,425.00		13,245.00	14,670.00
Southern California Edison	Quitclaim Grant of Easement & Relocate Meters and Fees		547.42				119.28	1,072.00	1,738.70
Spectrum	Technology FF&E						757.40		757.40
S & S Rent a Fence	Fence Rental / Installation					543.30			543.30
Staples	Office Supplies					447.17	471.33		918.50
State Water Resourse	Application Fees			462.00			621.00	817.00	1,900.00
Swinerton Builders	Main Construction					8,206,182.00	14,283,988.00	8,819,503.94	31,309,673.94
Tandus	Carpet							105,935.05	105,935.05
Temp Power System	Install Temporary Power to Existing Bungalows @ Edison							16,641.25	16,641.25
The Library Store	FF&E							808.21	808.21
Time Warner	Forced Relocation Project @ Edison Require Relocation & Cable Removable							5,265.00	5,265.00
Tomark Sports	Installed Netting					6,748.01			6,748.01
Tradenet Enterprise Inc	Edison LED Marquise Signage							16,876.13	16,876.13
Tuff Shed	Tuff Shed					3,923.90			3,923.90
Uline	FF&E							687.24	687.24
VCA Engineer	Civil Engineering Services for Temporary Erosion Control Measures							1,720.00	1,720.00
Verizon	Demarc Installation & Install 50 Pair Entrance Cable & Terminal							3,517.79	3,517.79
Virco MFG	FF&E							7,831.39	7,831.39
VS America	FF&E							15,196.23	15,196.23
Waxie Sanitation	FF&E							2,046.67	2,046.67
Wenger Corp	FF&E							7,429.30	7,429.30
Western Fence	Fence at Virginia Avenue Property		1,241.50	700.00					1,941.50
Yuang Tai	Estimating Services							35,061.25	35,061.25
Centralized Cost Allocation		520,173.38	880,107.80	1,016,281.08	809,997.52	170,033.45	146,652.99	204,072.80	3,747,319.02
TOTAL		861,943.47	3,351,957.76	5,192,051.49	2,627,966.88	9,930,008.52	16,748,569.40	12,680,948.62	51,393,446.14

* 07-08 does not match with QSS because the distribution between schools were done incorrectly. Net difference between all schools is zero.

ACTUAL EXPENSES BY SCHOOL SITE

FRANKLIN ELEMENTARY SCHOOL

RESOURCE - 00000/90500

VENDOR	DESCRIPTION OF SERVICES	07-08 Expenses Fund 21	08-09 Expenses Fund 21	09-10 Expenses Fund 21	10-11 Expenses Fund 21	11-12 Expenses Fund 21	12-13 Expenses Fund 21	13-14 Expenses Fund 21	Total Expenses
American Reprographics	Blue Prints			144.87			336.53		481.40
Amtech Elevator	Elevator Cab Access					130.00			130.00
BTC Labs	Inspection Services					444.50			444.50
CY Carlberg	Arborist				275.00				275.00
Division of State Architect	DSA Fees			100.00		1,000.00	409.26		1,509.26
HDS Architect	Architectural and Engineering Services				3,500.00	3,500.00			7,000.00
Parsons	DSA Closeout					23,374.32	647.04		24,021.36
PSOMAS	Aerial Photography & Digital Mapping	26,225.57							26,225.57
TMAD	Testing and Inspection				6,223.45	2,666.55			8,890.00
WWCOT	Architectural Design	170,000.26	11,256.50						181,256.76
TOTAL		196,225.83	11,256.50	244.87	9,998.45	31,115.37	1,392.83	0.00	250,233.85

* 07-08 does not match with QSS because the distribution between schools were done incorrectly. Net difference between all schools is zero.

ACTUAL EXPENSES BY SCHOOL SITE

GRANT ELEMENTARY SCHOOL

RESOURCE - 00000/90500

VENDOR	DESCRIPTION OF SERVICES	07-08 Expenses Fund 21	08-09 Expenses Fund 21	09-10 Expenses Fund 21	10-11 Expenses Fund 21	11-12 Expenses Fund 21	12-13 Expenses Fund 21	13-14 Expenses Fund 21	Total Expenses
AAA Flag	Banners				159.14				159.14
Alfa 26	Main Entry Reconfiguration Construction			71,000.00	200,734.99				271,734.99
American Reprographics	Blue Prints			1,294.25	113.47				1,407.72
ATC	Hazardous Material Investigation			1,301.50					1,301.50
CY Carlberg	Arborist Services			3,120.00	100.00				3,220.00
Daily Breeze	Advertising			223.55					223.55
Division of State Arch	DSA Permits & Closeout		1,925.75	21,463.00	1,171.76		409.26		24,969.77
Gaudet Design Group	Arborist Services					976.25			976.25
IOR Group	Inspection Services				9,180.00				9,180.00
MTGL	Testing & Special Inspection for DSA Closeout				6,268.00				6,268.00
Osborn	Architectural Design	87,827.00	33,164.00	12,064.00	6,300.00		700.00		140,055.00
Parsons	CM Cost				49,352.05				49,352.05
Parsons	DSA Closeout					13,911.36	647.04		14,558.40
Parsons	Commissioning					(241.98)			(241.98)
PBS&J	CEQA Environmental		3,822.56	672.55					4,495.11
PSOMAS	Aerial Photography & Digital Mapping	29,145.04	9,160.06		587.50				38,892.60
Centralized Cost Allocation			5,712.70	7,472.65	6,505.38				19,690.73
TOTAL		116,972.04	53,785.07	118,611.50	280,472.29	14,645.63	1,756.30	0.00	586,242.83

* 07-08 does not match with QSS because the distribution between schools were done incorrectly. Net difference between all schools is zero.

ACTUAL EXPENSES BY SCHOOL SITE

JOHN ADAMS MIDDLE SCHOOL

RESOURCE - 00000/90500

VENDOR	DESCRIPTION OF SERVICES	07-08 Expenses Fund 21	08-09 Expenses Fund 21	09-10 Expenses Fund 21	10-11 Expenses Fund 21	11-12 Expenses Fund 21	12-13 Expenses Fund 21	13-14 Expenses Fund 21	Total Expenses
AAA Flag	Banners				159.14	300.44	122.64		582.22
ABF Chemical	Termite Treatment					890.00			890.00
A C Pros	Miscellaneous Construction Work							31,980.00	31,980.00
American Reprographics	Blue Prints			3,600.13	5,083.42	84.13		19.35	8,787.03
Apple	Computers FF&E						151,841.14		151,841.14
Arcadis (LFR)	Soil Testing & Analysis		39,899.04	37,199.32	2,814.20	40,586.14	1,599.52	15,904.58	138,002.80
AT&T	Network Hardware				9,583.28	(9,583.28)	68,756.00		68,756.00
ATC	Hazardous Material Investigation		17,239.90		4,971.00	43,330.92	15,931.42	1,025.00	82,498.24
PBS&J	CEQA Environmental		58,322.27	81,136.84	16,129.28	8,107.55			163,695.94
Bourget Bros	Construction Materials			229.71					229.71
California Dept of Education	Review of Plans & Specification			1,623.12					1,623.12
California Office	Furniture for Relocatables Classes & FF&E				13,472.35	1,748.83	2,331.40	2,452.80	20,005.38
Cannon Business	Purchase of new Cannon Copier/Scanner/Fax, Usage, Agreement				9,296.19	1,245.62	917.70	429.72	11,889.23
Christina Facio	District Consultant					3,483.77			3,483.77
Church on Pearl Street	Off Site Parking for Staff				12,750.00	15,000.00			27,750.00
City of Santa Monica	Plan Check/Permit			18,184.29	17,747.54				35,931.83
Columbia Cascade Company	Furnish 4 model 2007-6-p m and 5 model 2007-10-p m benches to be installed							7,445.55	7,445.55
Commercial Door	Furnish & Install a new Hollow Metal Door & Frame						1,571.00	3,239.00	4,810.00
Converse Consulting	Geotechnical Investigation Services		30,154.00	9,909.00	24,756.50	68,059.50	58,447.75	8,426.50	199,753.25
Crown Disposal	Waste Disposal					111,111.01	56,951.64	7,579.84	175,642.49
Culver Newlin	FF&E						5,445.44		5,445.44
CY Carlberg/Gaudet Design	Arborist Services			7,830.00	2,840.00				10,670.00
Daily America	Parking Lot Management			46,509.09					46,509.09
Daily breeze	Advertisement			454.42	588.20				1,042.62
Design Within Reach	FF&E						4,459.06		4,459.06
Digital Network	Remove & Reinstall Smart Board				2,530.55	(2,530.55)			0.00
Diversified	FF&E						11,400.00		11,400.00
Division of State Arctitect	DSA		69,502.22	(1,727.35)	2,782.33	4,865.76	500.00	411.60	76,334.56
Dryfuss Construction	Parking Lot Construction			194,542.12					194,542.12
DWI Enterprise	FF&E						506.54		506.54
EAS Bobcat	Labor & Material for Tennis Court Fence Posts & Footings						21,000.00	38,650.00	59,650.00
Executive Environment	UVC light testing in building EFG classroom to verify no radiation is emit							339.27	339.27
Expense Transfer	Termite Report					685.00			685.00
Fans	Fans for JAMS							1,178.90	1,178.90
Fastsigns	Signage					1,376.75			1,376.75

Fehr & Peers	Transportation Solutions				4,972.00				4,972.00
Gas Company	Replace Meter					1,473.73			1,473.73
Gateway Science	Inspection Service		892.50	38,719.88	45,877.96	367.76			85,858.10
Gaudet Design Group	Arborist Services					1,121.25	11,307.50	19,124.50	31,553.25
Graph Company	Parking Lot Construction			413,445.00					413,445.00
Hewlett-Packard	FF&E						5,955.12		5,955.12
ICI Architectural Millwork	Supply & Install Electrical Panel Covers & Furnish Display case for Building N Breezeway							12,512.00	12,512.00
Intelliccept	Furnish 40 Skate Deterrent						303.22		303.22
Interior Office	FF&E						124,097.87		124,097.87
Jacobs Engineering Group	Fire Protection Plans & Specification		13,467.08						13,467.08
Jane Buelow	Outreach - Newsletter				619.34	8,403.38	3,113.31	267.76	12,403.79
Jones-Campbell	FF&E						9,628.34		9,628.34
Kendall Planning	Offsite Parking & Support					15,800.00	2,443.33		18,243.33
KI	FF&E						79,134.57		79,134.57
Killefer Flaming Architech	Architectural Design		50,620.00	13,680.00					64,300.00
King Relocation	Move Management & Relocation Services				32,060.00		34,727.75		66,787.75
Knowland	Inspection Service					111,225.00	162,975.00	30,375.00	304,575.00
Korade & Associates	Remove & Replace ceiling for Arch Insp & other Construction Works			5,791.00	14,801.42	1,277.00	23,383.00	26,459.00	71,711.42
LA Opinion	Advertisement			1,870.50					1,870.50
Lahav Construction	Relocate Data 7 Elec to U127 Above Convactor, add Data						2,328.00		2,328.00
Leighton Consulting	Geotechnical Observation & Testing Services				20,200.00	97,718.00	86,456.86	13,396.60	217,771.46
Li & Associates	Provide Structural/Engineering Review					4,895.60	14,382.50		19,278.10
Lucy Fairweather	Outreach - Newsletter						430.00	130.00	560.00
Mcgraph Rentcorp	Lease of Relocatables				142,529.61	86,965.00	113,634.25	4,290.52	347,419.38
Meridian IT	Storage & Software For Transfer of Compass System to District Server							1,931.61	1,931.61
Moving Expenses	Moving Expenses paid to District Employees				5,628.29		3,556.99		9,185.28
MTGL	Testing & Inspection Services					2,600.88			2,600.88
Nazzaro	18 Rental HHW Piping Trim Covers for 80's Wing Classrooms							3,481.50	3,481.50
Neil Perlmutter	Change Order Review & Mitigation				19,678.96	2,970.00	2,460.00		25,108.96
Networld Solution	Installation of 3 IP based Video Cameras & Tech Consulting				18,120.00	14,987.50	43,427.50	1,520.00	78,055.00
Oliver Worldclass Labs	Replacing Receiver @ Classroom # 31						465.69		465.69
Orbach, Huff & Stuares	Legal Services				71,690.44	52,737.59	125,081.48	8,217.26	257,726.77
Osborn	Architectural Design	245,045.00	1,222,120.50	166,886.04	105,840.75	305,560.00	149,304.00		2,194,756.29
Pacific Offic Interiors	New Worksurface to replace Existing Bridge: Hayworth Furniture							650.89	650.89
Park A Bike	35 Dbl Bike Hoops, 7 Bike Racks and 8-10 Board Skate Racks							19,198.89	19,198.89
Parsons	CM Cost				866,752.67	590,559.67	319,114.77	183,899.60	1,960,326.71
Parsons	Commissioning					49,179.79	79,999.17	25,921.17	155,100.13
Parsons	DSA Closeout					12,940.80	6,793.92		19,734.72

Parsons	General CM					86,243.65	219,411.80	955.90	306,611.35
Parsons	Reimbursable						20,012.51	37,166.10	57,178.61
PSOMAS	Aerial Photography & Digital Mapping	28,149.24	23,098.42	36,051.90	10,499.79				97,799.35
R & H Industries	Green Fringe & Relocateable Project				976,462.32		0.00		976,462.32
Robert Lowe	Offsite Parking & District Consultant						12,975.00	6,975.00	19,950.00
Samsung Fixture	FF&E						7,797.38		7,797.38
Santa Monica Fence	Install Four Gates with Removable & Lockable Bumper				7,185.00				7,185.00
School Space	FF&E						324.08		324.08
School Speciality	FF&E						578.94		578.94
Sehi	Ink Toner & Computers FF&E						64,727.82		64,727.82
Sheriden Group	FF&E						2,684.46		2,684.46
Simplex Grinnell	Firealarm & Security					88,427.62	337,575.71	25,440.91	451,444.24
Simpson & Simpson	District Consultant					7,142.12	101,933.80	41,181.16	150,257.08
Sir Speedy	Printing & Stationery								0.00
Smith Emery	Testing & Special Inspection Services				8,787.44				8,787.44
So Cal Sanitation	Provide & Install 12' Permanent Fencing for Tennis Court							44,816.81	44,816.81
Southbay Landscaping	Tree Trimming/Pruning & other Construction Related work					3,400.00	16,090.00	38,181.60	57,671.60
Stanely Pest	Removal of Animal Feces & Insect Treatment in Library Attic						2,800.00		2,800.00
Staples	Office Supplies					78.56	737.52	272.28	1,088.36
State Water Resources	Permit Application Fees				346.00		466.00		812.00
Stephan Plumbing	Sewer Replacement				42,475.00				42,475.00
Stop Sign & Design	Parking Signs		1,230.00		1,575.00				2,805.00
Swinterton Builders	Main Construction					6,302,766.23	6,190,199.46	569,505.34	13,062,471.03
Tandus	Carpet						24,506.96		24,506.96
Tomark Sport	Netting for Field			10,000.00					10,000.00
Uline	FF&E						371.09		371.09
West Elm	FF&E						862.90		862.90
Centralized Cost Allocation		203,949.17	295,460.88	386,485.72	309,120.45	72,466.49	65,122.58	91,434.59	1,424,039.88
TOTAL		477,143.41	1,820,776.81	1,473,650.73	2,830,726.42	8,210,069.21	8,875,463.40	1,326,388.10	25,014,218.08

* 07-08 does not match with QSS because the distribution between schools were done incorrectly. Net difference between all schools is zero.

ACTUAL EXPENSES BY SCHOOL SITE

LINCOLN MIDDLE SCHOOL

RESOURCE - 0000/90500

VENDOR	DESCRIPTION OF SERVICES	07-08 Expenses Fund 21	08-09 Expenses Fund 21	09-10 Expenses Fund 21	10-11 Expenses Fund 21	11-12 Expenses Fund 21	12-13 Expenses Fund 21	13-14 Expenses Fund 21	Total Expenses
AAA Flag	Banners				159.14			476.33	635.47
Academic Superstore	MS Office Licenses for Apple/Mac					2,648.23			2,648.23
Ainslie Company	Installation of FF&E					4,010.00			4,010.00
American Reprographics	Blue Prints			8,035.21	6,777.62	4,117.00	655.94	3,913.26	23,499.03
Amtech Elevator	Repair of Elevator				25,875.00	25,875.00			51,750.00
Apple Computers	Laptops & Computers					71,311.94		11,925.24	83,237.18
Arcadis (LFR)	Soil Testing & Analysis		49,214.14	29,729.30		43.32	6,628.35	5,293.74	90,908.85
AT&T	Network Hardware				7,540.19	953.97			8,494.16
ATC	Hazardous Material Investigation		18,331.75		18,158.56	31,470.40	6,876.41	5,326.50	80,163.62
B-Line	Installation of Volt Circuit for teh Condensate return Tank						1,500.00		1,500.00
Blois Construction	Fire Water Main Project				89,320.00				89,320.00
California Emergency Mgmt Agency	DSA Compliance			948.50					948.50
California Office Systemt	Relocatables Furniture				4,587.93				4,587.93
Christina Facio	District Consultant					3,194.28			3,194.28
City of Santa Monica	Permit Application for Building C Modernization			23,245.74	32,042.02	2,307.18			57,594.94
Construct 1 One Corp	Budget Validation Report					7,500.00			7,500.00
Converse Consulting	Geotechnical Investigation Services		28,250.00		21,742.00		64,457.00	135,514.00	249,963.00
Crown Disposal	Demolition & Construction Waste Removal				9,261.30	8,846.38	1,336.34		19,444.02
CY Carlberg	Arborist Services			6,720.00					6,720.00
Daily Breeze	Advertisement			571.54	412.38				983.92
Demco	Indoor Book Return for Library in Temporary Housing				865.97				865.97
Division of State Arctitect	DSA		12,016.50	85,974.89	2,389.55		16,660.00	813.00	117,853.94
Dynamic Engineering	Engineering & Inspection Services				38,896.00	89,148.00	1,088.00		129,132.00
Erickson-Hall	Construction Contract - Modernization						4,322,745.31	10,802,343.07	15,125,088.38
Fastsigns	Signage					1,075.80			1,075.80
Fehr & Peers	Transportation Solutions				4,972.00	4,526.40	1,977.16		11,475.56
First UnitedMethodist Church	Off Site Parking Lease				14,760.00				14,760.00
Floor Tech	Installation, Material & Equipment to install Arstong Linoleum tile over the existing rub							29,607.00	29,607.00
Gaudet Design Group	Arborist Services					243.75	1,260.00		1,503.75
Golden Star Technology	Laptops & Computers					13,986.17			13,986.17
Icon West	Modernization of Building E Project				638,190.50	1,738,302.75	39,990.69		2,416,483.94
Icon West	Budget Validation Report					7,500.00			7,500.00
IMED	32" Flat LCD HDTV				489.27	359.42			848.69
IOR Group	Inspection Services				23,020.00				23,020.00
J & J Environmental	Removal/Abetment of Hazardous Material					9,500.00			9,500.00
Jane Buelow	Outreach - Newsletter				2,229.84	4,118.15	4,299.62	1,186.37	11,833.98
Kendall Planning	Offsite Parking & Support					8,380.00	5,083.33		13,463.33
King Relocation	Move Management Services				16,970.25	27,342.13			44,312.38

Korade & Associates	Remove & Replace ceiling for Arch Insp			4,916.00	33,153.11	106,776.00		2,973.00	147,818.11
Krueger International (KI)	FF&E					29,243.33			29,243.33
LA Opinion	Advertisement			620.00					620.00
Li & Associates	Provide Structural/Engineering Review							9,890.00	9,890.00
Lucy Fairweather	Outreach - Newsletter						680.00	1,243.26	1,923.26
Meridian IT	Storage & Software For Transfer of Compass System to District Server							1,931.61	1,931.61
Mobile Modular	Lease of Relocatables				93,733.75	81,312.00	88,618.00	88,088.00	351,751.75
Moving Expenses	Moving Expenses paid to District Employees			271.90	541.31	4,150.72			4,963.93
Neil Perlmutter	Change Order Review & Mitigation				210.00	11,460.00	30,920.00		42,590.00
Networld Solutions	Technology Services					29,912.50	5,875.00	7,562.50	43,350.00
Ninyo & Moore	Inspection Services					15,000.75	646.00		15,646.75
Orbach, Huff & Stuaez	Legal Services				11,053.25	10,594.40	822.82	281.25	22,751.72
Parsons	Construction Management				662,829.82	682,682.81	498,826.51	466,603.00	2,310,942.14
Parsons	Commissioning					3,004.59	20,680.90	60,312.68	83,998.17
Parsons	DSA Closeout					37,447.44	566.16		38,013.60
Parsons	General CM					104,920.47	51,443.39	17,014.67	173,378.53
Parsons	Reimbursable						15,004.36	55,863.12	70,867.48
PBS&J	CEQA Environmental		61,480.95	57,085.52					118,566.47
PSOMAS	Aerial Photography & Digital Mapping	24,842.12	32,887.03	16,725.85					74,455.00
RKDM Environmental	Relocation of Existing Condensate Return Tank from Building C						6,354.50		6,354.50
Robert Lowe	Offsite Parking & District Consultant						1,762.50	300.00	2,062.50
Rusco Inc	Install New Lockers					14,575.00			14,575.00
Santa Monica Daily Press	Advertisement				59.00				59.00
School Specialty	FF&E					23,066.83			23,066.83
Sehi Computers	Laserjets Printers & ink Cartridge					1,868.18	230.79		2,098.97
Simplex Grinnell	Troubleshoot Dact Card & Fire Alarm & Security				364.00	94,804.72	227,568.87	676,274.23	999,011.82
Simpson & Simpson	District Consultant					1,975.48	32,519.44	54,705.60	89,200.52
Sir Speedy	Printing & Stationery						43.70		43.70
South Bay Landscaping	Construction Work						7,380.00	3,950.00	11,330.00
Staples	Office Supplies						55.21		55.21
State Water Resource	Permits					462.00	621.00	817.00	1,900.00
Tandus US	Carpeting					19,775.60		61,823.87	81,599.47
TYR	Inspection Services						91,322.00	138,908.00	230,230.00
Wilson Brooks	Moving of Piano					650.00			650.00
WWCOT	Architectural Design	325,332.70	1,306,931.99	301,024.84	177,140.51	155,679.03	277,831.32	445,711.29	2,989,651.68
Y & M Construction	Relocatables Construction				405,489.64	39,039.60			444,529.24
Yuang Tai	Estimating Services							10,357.50	10,357.50
Centralized Cost Allocation	.	276,309.92	400,437.46	523,803.22	418,428.90	85,861.63	89,552.46	116,955.69	1,911,349.28
TOTAL		626,484.74	1,909,549.82	1,059,672.51	2,761,662.81	3,621,023.35	5,923,883.08	13,217,964.78	29,120,241.09

* 07-08 does not match with QSS because the distribution between schools were done incorrectly. Net difference between all schools is zero.

ACTUAL EXPENSES BY SCHOOL SITE

MALIBU HIGH SCHOOL

RESOURCE - 00000/90500

VENDOR	DESCRIPTION OF SERVICES	07-08 Expenses Fund 21	08-09 Expenses Fund 21	09-10 Expenses Fund 21	10-11 Expenses Fund 21	11-12 Expenses Fund 21	12-13 Expenses Fund 21	13-14 Expenses Fund 21	Total Expenses
Advanced Planning	Net Request Software - Facilities & administrative Management System							8,097.00	8,097.00
All Area Plumbing	Capping off Existing Storm Drain Catch Basin, Cap off Water Valve, Dig Up G							800.00	800.00
American Reprographics	Blue Prints			52.23	3,254.75	2,031.38	1,839.37	2,694.05	9,871.78
Amtech Elevator	Elevator Cab Access					130.00			130.00
Arcadis (LFR)	Soil Testing & Analysis		7,218.91	77,326.58	11,288.28	86,128.85		4,220.11	186,182.73
ATC	Hazardous Material Investigation		19,087.50		295.00	1,496.50			20,879.00
Atkins (PBS&J)	CEQA Environmental		221,639.84	120,826.80	205,127.85	67,195.25	22,832.00		637,621.74
Blois Construction	Merritt Drive & Bisch Drive Water Main Project					403,925.00	42,327.80		446,252.80
Bon Air	Install 2 RTU's 2 Exhaust Fans & 27 Fire Smoke Detectors etc						32,790.81	468.00	33,258.81
BTC Lab	Inspection Services					33,432.00	7,460.00		40,892.00
California Geological	Geohazard Report			3,600.00					3,600.00
Cannon	Copier Overusage Charges & Service Agreement, & Copier					9,491.17	461.92	512.36	10,465.45
Cintas Fire Protection	Test of Ansul Suppression System						250.00		250.00
City of Malibu	Coastal Development Permit			45,273.10	1,935.00	1,606.00			48,814.10
Condor Inc.	Repair	22,885.00	1,000.00						23,885.00
Coastal Design Builder	Story Poles for Malibu CDP & Planning Commission					7,020.00	3,780.00		10,800.00
CSD Engineer	Site Improvement to Water Lines			36,367.11	19,765.18	10,196.14	3,371.57		69,700.00
Culbertson & Associates	Legal Fees		31,147.00						31,147.00
CY Carlberg	Arborist Services			12,210.00					12,210.00
Daily Breeze	Advertisement				1,017.19		228.95		1,246.14
Decision Lens	Web-Base Software						36,077.00		36,077.00
Division of State Architect	DSA		3,236.34	194,247.86	1,152.10	6,238.00	1,000.00	588.00	206,462.30
Drew Lewis	Sewer Drain line Surveys & Investigation		9,900.00						9,900.00
EAS Bobcat	Demo & Excavation (220ft) for MDF Room						39,800.00	44,800.00	84,600.00
Enterprise Security	Video Security System Equipment							32,244.94	32,244.94
ERW Design	Malibu Project Consultant							37,762.50	37,762.50
Expense Transfer	Electric Lights & Fire Alarm Repair paid by M&O						7,909.74		7,909.74
Fedex	Postage					49.52	24.15		73.67
Fehr & Peers	Parking Study						9,300.00		9,300.00
Firemaster	Installation Ansul System						7,080.46		7,080.46
Gaudet Design	Arborist Services					827.50	2,201.25		3,028.75
GE Water & Power	Membrane Bioreactor Wastewater							41,249.00	41,249.00

	Equipment								
Geoconcept	Additional Septic System Investigation		87,862.36	18,900.00					106,762.36
Glenn Lukos	Biological Study for Coastal Development Permit		53,979.80	7,880.20	6,073.50				67,933.50
Haldeman	Provide 2 Exhaust Fans for Building J1 - Material Only						1,174.50		1,174.50
HMC	Architectural Design	615,146.40	1,297,993.92	1,711,817.30	313,370.24	130,186.60	55,525.23	706,703.00	4,830,742.69
Innovative Construction	Soil Remediation Project					337,757.00			337,757.00
Integrated Performance	Sampling & Testing Ground Water			8,193.84		7,814.40			16,008.24
Jane Buelow	Outreach - Newsletter				501.50	2,992.98	3,288.24	449.44	7,232.16
JPL Zoning	Certified List of Residents Within 500 Feet of Malibu High						700.00		700.00
Korade & Associate	Building Investigation & Other Construction Work						2,880.00	4,870.00	7,750.00
LA Pros	Repair Conduits & Low Voltage Wire in Bldg E							17,400.00	17,400.00
Lahav Construction	Provide & Install 1920 if of 40						38,700.00	44,980.00	83,680.00
Leighton Consulting	Geotechnical Observation & Testing Services		53,500.00	12,400.00	3,000.00	9,402.33		7,580.10	85,882.43
Li & Associates	Provide Structural/Engineering Review						15,000.00		15,000.00
Los Angeles County Waterworks	Water Services Upgrade			6,200.00	7,100.00				13,300.00
Lucy Fairweather	Outreach - Newsletter						1,660.00	680.00	2,340.00
Main Electric	Softfit LED Lights							37,955.63	37,955.63
Malibu Surfside	Advertisement		2,064.00		300.00	780.00			3,144.00
Malibu Times	Advertisement		1,452.03						1,452.03
Meridian IT	Storage & Software For Transfer of Compass System to District Server							31,780.09	31,780.09
Mobile Modulares	Relocatables					7,504.59	3,412.73	2,550.60	13,467.92
Moment Construction	Campus Wide Fire Alarm Project					1,337,600.00	114,299.73	150,586.32	1,602,486.05
Neil Perlmutter	Change Order Review & Mitigation					8,250.00	10,050.00		18,300.00
Networld Solution	Technology Services					4,562.50	9,250.00	1,375.00	15,187.50
Ocean Blue	Analytical Report for Soil Cutting		165.00						165.00
Onesource Distributor	Supplying Exterior Wall Mounted LED Lights on existing building							32,042.73	32,042.73
Orbach	Legal Fees (This Charge will be reversed in 10-11 SY)			(3,136.50)	71,710.29	29,159.88	21,933.79	7,937.77	127,605.23
Pacific Municipal Consultant	Lighting Compliance Review							1,125.00	1,125.00
Parsons	CM Cost				17,667.20	649,107.87	425,591.61	93,554.16	1,185,920.84
Parsons	Commissioning					(8,201.26)	9,543.84		1,342.58
Parsons	DSA Closeout					23,940.48	6,632.16		30,572.64
Parsons	General CM					12,554.57	47,793.29	4,700.90	65,048.76
Parsons	Reimbursable						36,961.17	22,058.58	59,019.75
Pottorff (PCI Industries)	Provide 27 Balimo Actuators for Building J1						6,621.75		6,621.75
PSOMAS	Aerial Photography & Digital Mapping	44,537.21	136,251.13	41,454.39		4,046.10			226,288.83
R A P Bobcat	MDF Room - Concrete Demolition, Trench						24,900.00	24,950.00	49,850.00

Robert Lowe	Offsite Parking & District Consultant						487.50		487.50
Santa Monica Daily Press	Advertisement				115.45		97.50		212.95
Segal, Elad	Material & Labor for Encasement of New Electrical Conduits for Power & Sign							44,900.00	44,900.00
Simplex Grinnell	Fire & Security Equipment						3,120.00	6,351.99	9,471.99
Simpson & Simpson	District Consultant					379.90	11,852.88	151.96	12,384.74
Sir Speedy	Printing					136.57			136.57
So Cal Sanitation	Temporary Safety Fencing							1,188.00	1,188.00
Staples	Office Supplies					212.38	65.75		278.13
Stephen Payte	Inspection Services					113,866.00	80,736.00	9,520.00	204,122.00
Sundt Construction	Budget Validation Estimate & Schedule Services						7,500.00		7,500.00
Syska Hennessey	Design Service for Parking Lot						17,997.84		17,997.84
TMAD	Engineering Services				4,774.00	2,046.00			6,820.00
Topanga Underground	Septic System Investigation		188,820.50	52,330.88					241,151.38
Thyssenkrupp	Elevator Upgrade Project					35,266.40	68,161.60		103,428.00
US Air Conditioning	Provide 2 Raznor Outdoor Units for Building J1-Material only						46,342.44		46,342.44
Centralized Cost Allocation	.	478,971.53	764,542.15	994,102.24	804,232.26	164,714.66	139,710.05	178,167.93	3,524,440.82
TOTAL		1,161,540.14	2,879,860.48	3,340,046.03	1,472,679.79	3,503,847.26	1,430,724.62	1,606,995.16	15,395,693.48

* 07-08 does not match with QSS because the distribution between schools were done incorrectly. Net difference between all schools is zero.

ACTUAL EXPENSES BY SCHOOL SITE

MCKINLEY ELEMENTARY SCHOOL

RESOURCE - 00000/90500

VENDOR	DESCRIPTION OF SERVICES	07-08 Expenses Fund 21	08-09 Expenses Fund 21	09-10 Expenses Fund 21	10-11 Expenses Fund 21	11-12 Expenses Fund 21	12-13 Expenses Fund 21	13-14 Expenses Fund 21	Total Expenses
American Reprographics	Blue Prints				515.77	105.37			621.14
ATC	Hazardous Material Investigation		4,914.20			2,222.32			7,136.52
California Office System	FF & E					7,782.55			7,782.55
Crown Disposal	Demolition & Construction Waste Removal				2,103.39	4,454.44			6,557.83
CY Carlberg	Arborist Services			3,120.00	100.00				3,220.00
Daily Breeze, Santa Monica Daily Press	Advertisement				559.88				559.88
Division of State Architect	DSA Services			100.00	3,506.47	1,570.04	2,408.06	549.00	8,133.57
Fast Track	Main Entry Reconfiguration Construction				43,607.39	414,733.18	81,078.60		539,419.17
Gaudet Design Group	Arborist Services					1,346.25			1,346.25
Jane Buelow	Outreach - Newsletter				918.00	307.31			1,225.31
King Relocation Service	Move Management				6,662.34	4,548.91			11,211.25
Korade & Associates	Siteb Repairs					2,601.00			2,601.00
MTGL	Testing & Special Inspection					26,890.00			26,890.00
Neil Perlmutter	Change Order Review & Mitigation					2,520.00			2,520.00
Networld Solution	Technology Consulting					2,710.00			2,710.00
Parsons	CM Cost				12,405.74	126,059.26			138,465.00
Parsons	Commissioning					(400.57)			(400.57)
Parsons	DSA Closeout					11,323.20	7,360.08		18,683.28
Parsons	General CM					15,038.91	186.28		15,225.19
PBS&J	CEQA Environmental		3,368.89	662.77					4,031.66
PSOMAS	Aerial Photography & Digital Mapping	28,389.78	7,766.50						36,156.28
Simplex Grinnel	Firealarm & Security					49,348.19			49,348.19
Southbay Landscaping	Removal of Two Existing Evergreen Pear Trees				4,212.00	3,300.00			7,512.00
Stephen Payte	Inspection Services					22,406.00			22,406.00
TandusUS	Carpet					3,568.44			3,568.44
Western Fence	Install Fence & Gate					1,452.04			1,452.04
WWCOT	Architectural Design	239,303.50	61,107.00	6,729.50	72,342.00	36,171.50	8,333.50	569.67	424,556.67
Centralized Cost Allocation			11,928.12	15,602.90	12,435.84	3,166.26	2,685.27		45,818.39
TOTAL		267,693.28	89,084.71	26,215.17	159,368.82	743,224.60	102,051.79	1,118.67	1,388,757.04

* 07-08 does not match with QSS because the distribution between schools were done incorrectly. Net difference between all schools is zero.

ACTUAL EXPENSES BY SCHOOL SITE

OLYMPIC HIGH SCHOOL

RESOURCE - 00000/90500

VENDOR	DESCRIPTION OF SERVICES	07-08 Expenses Fund 21	08-09 Expenses Fund 21	09-10 Expenses Fund 21	10-11 Expenses Fund 21	11-12 Expenses Fund 21	12-13 Expenses Fund 21	13-14 Expenses Fund 21	Total Expenses
Advanced Planning Tech	Net Request Software - Facilities & administrative Management System							1,594.00	1,594.00
American Concrete	Hazardous Material Removal & Demo		51,720.00						51,720.00
American Reprographics	Blue Prints			4,511.65	1,302.23	893.60	2,834.27	1,443.67	10,985.42
ATC	Hazardous Material Investigation		24,034.15		2,435.00				26,469.15
Castlerock Environmental	Removal & Dispose Asbestos in Flooring & Base Mat				4,750.00				4,750.00
Christina Facio	District Consultant					75.00			75.00
CY Carlberg	Arborist Services			3,120.00					3,120.00
Daily Breeze	Advertisement			202.75					202.75
Decision Lens	Web-Base Software						5,873.00		5,873.00
Division of State Arch	DSA Permits & Closeouts		795.00	30,067.60				1,581.00	32,443.60
Drefuss Construction	Infill of Door Btwn Classroom 1 & 2		3,989.57						3,989.57
Gateway Science	Inspection Service				6,371.88				6,371.88
HED	Architectural Design	54,603.82	137,150.84	292,481.62	33,561.25	71,945.13	36,626.21	28,224.62	654,593.49
Jane Buelow	Communication - Outreach					117.69	254.06	602.44	974.19
Juhany-Nac	Additional Architectural Design		14,068.41	3,086.86	3,946.25				21,101.52
King Relocation Service	Move Management				14,768.62				14,768.62
Korade & Associate	Building Investigation		5,862.00		4,092.00	16,352.00			26,306.00
Kroner Environmental	Soil Sampling & removal for relocables CR building			4,897.00					4,897.00
Leighton Consulting	Geotechnical Investigation			22,900.00					22,900.00
Lucy Fairweather	Communication - Outreach						360.00	500.00	860.00
Meridian IT	Storage & Software for Transfer of Compass System to District Server							1,931.61	1,931.61
Moving Expenses	Paid to Teachers & Classified				2,335.95				2,335.95
Neil Perlmutter	Change Order Review & Mitigation				16,695.00	11,010.00	1,500.00		29,205.00
Networld Solution	Technology Consulting							8,500.00	8,500.00
Orbach, Huff	Legal Fees							8,792.25	8,792.25
Parsons	CM Cost				83,355.27	55,192.08	119,555.24	378,337.42	636,440.01
Parsons	Commissioning					3,649.33			3,649.33
Parsons	DSA Closeout					3,558.72	323.52		3,882.24
Parsons	General CM					5,323.57	15,818.24	18,289.20	39,431.01
Parsons	Reimbursable						3,960.60	19,010.88	22,971.48
PBS&J	CEQA Environmental		12,298.70						12,298.70
PSOMAS	Aerial Photography & Digital Mapping	15,805.95	38,636.55		6,850.00				61,292.50
SimplexGrinnell	Fire Alarm System							30,558.40	30,558.40
Simpson & Simpson	District Consultant						759.80	1,063.72	1,823.52

Sir Speedy	Printing			779.81					779.81
Southbay Landscaping	Upper Field Landscaping			67,835.00	28,035.00				95,870.00
Yuang Tai	Estimating Services							9,375.00	9,375.00
Centralized Cost Allocation		79,056.05	114,505.37	149,781.90	119,379.34	26,645.35	22,600.76	29,166.96	541,135.73
TOTAL		149,465.82	403,060.59	579,664.19	327,877.79	194,762.47	210,465.70	538,971.17	2,404,267.73

*** 07-08 does not match with QSS because the distribution between schools were done incorrectly. Net difference between all schools is zero.**

ACTUAL EXPENSES BY SCHOOL SITE

POINT DUME ELEMENTARY SCHOOL

RESOURCE - 00000/90500

VENDOR	DESCRIPTION OF SERVICES	07-08 Expenses Fund 21	08-09 Expenses Fund 21	09-10 Expenses Fund 21	10-11 Expenses Fund 21	11-12 Expenses Fund 21	12-13 Expenses Fund 21	13-14 Expenses Fund 21	Total Expenses
ATC	Hazardous Material Investigation			8,905.50					8,905.50
B-Line	Electrical Work				6,000.00				6,000.00
Bon Air	Gas & Furnace Project				15,760.00	395,737.42			411,497.42
BTC Inspection	Inspection Services					1,148.00			1,148.00
CY Carlberg	Arborist Services				1,535.00				1,535.00
Daily Breeze	Advertisement				210.24				210.24
Division of State Architect	DSA		4,137.57						4,137.57
Drew Lewis	Sewer Drain line Surveys & Investigation		6,400.00						6,400.00
Geoconcept	Additional Septic System Investigation		23,280.00	6,000.00					29,280.00
HMC	Architectural Design	46,533.44	58,212.95	56,254.92	1,474.00	16,489.96	1,105.50		180,070.77
Integrated Performance	Sampling & Testing Ground Water			9,886.80					9,886.80
Jane Buelow	Outreach - Newsletter				93.50	121.06			214.56
Jenn/Matt	Trenchless Gas Line Project				48,684.00	750.00			49,434.00
Knowland Inc	Inspection Services				8,468.00	8,352.00	375.00		17,195.00
Neil Perlmutter	Change Order Review & Mitigation				9,556.50				9,556.50
Orbach, Juff & Suarez	Legal Charges				3,404.86				3,404.86
Parsons	CM Cost				135,484.94	71,040.94			206,525.88
Parsons	Commissioning					(719.31)			(719.31)
Parsons	DSA Closeout					2,022.00	566.16		2,588.16
PBS&J	CEQA Environmental		2,196.28						2,196.28
PSOMAS	Aerial Photography & Digital Mapping	8,637.57		22,719.17					31,356.74
R S Plumbing	Gas Services				5,300.00				5,300.00
Topanga Underground	Septic System Investigation		30,000.00	32,176.94					62,176.94
Centralized Cost Allocation		4,120.19	10,511.37	25,705.93	20,488.17	4,196.17	3,559.18		68,581.01
TOTAL		59,291.20	134,738.17	161,716.07	262,565.62	499,138.24	5,878.89	0.00	1,123,328.19

* 07-08 does not match with QSS because the distribution between schools were done incorrectly. Net difference between all schools is zero.

ACTUAL EXPENSES BY SCHOOL SITE

ROOSEVELT ELEMENTARY SCHOOL

RESOURCE - 00000/90500

VENDOR	DESCRIPTION OF SERVICES	07-08 Expenses Fund 21	08-09 Expenses Fund 21	09-10 Expenses Fund 21	10-11 Expenses Fund 21	11-12 Expenses Fund 21	12-13 Expenses Fund 21	13-14 Expenses Fund 21	Total Expenses
CY Carlberg	Arborist Services				485.00				485.00
Division of State Architect	DSA Services			850.00			409.26		1,259.26
Parsons	DSA Closeout					12,212.88	161.76		12,374.64
PSOMAS	Aerial Photography & Digital Mapping	26,330.73							26,330.73
WWCOT	Architectural Design	242,239.40	80,447.00	2,595.25					325,281.65
									0.00
TOTAL		268,570.13	80,447.00	3,445.25	485.00	12,212.88	571.02	0.00	365,731.28

* 07-08 does not match with QSS because the distribution between schools were done incorrectly. Net difference between all schools is zero.

ACTUAL EXPENSES BY SCHOOL SITE

SAMOH

RESOURCE - 0000/90500

VENDOR	DESCRIPTION OF SERVICES	07-08 Expenses Fund 21	08-09 Expenses Fund 21	09-10 Expenses Fund 21	10-11 Expenses Fund 21	11-12 Expenses Fund 21	12-13 Expenses Fund 21	13-14 Expenses Fund 21	Total Expenses
AAA Flag	Banners						952.02		952.02
Advanced Electronics	3 Motorola Radius CP200 Replacement Batteries							191.37	191.37
All Area Plumbing	Plumbing Work At the Utility Building							26,974.13	26,974.13
AMEC (MACTEC)	Architectural Services related to Closeout		54,630.00	2,435.00	4,180.80	28,687.86	111,906.73	69,915.25	271,755.64
American Reprographics	Blue Prints			3,349.09	1,022.06	3,498.31	2,260.81	379.13	10,509.40
ATC	Hazardous Material Investigation			16,135.00		7,356.77	3,057.56	3,218.50	29,767.83
B & H Photo	Sample Headphones							44.49	44.49
Bali Construction	Storm Drain Connection @ 4th & Pico						42,344.35	43,628.65	85,973.00
B-Line	Installation of Two Flood Lights @ the Olympic Entrance of 6th Street							3,200.00	3,200.00
Blazing Industril Steel	Furnish Structural Steel & Roof Decking @ Phase 2 Utility Building							25,210.50	25,210.50
Breen Engineering	Engineering Service for Storm Water Pollution				4,702.50	522.50			5,225.00
BTC Lab	Inspection Services					1,640.55			1,640.55
California Geological Survey	Application fee for Geotechnical Report			3,600.00					3,600.00
California Testing & Inspection	Inspection Services					105,123.00	967,591.32	550,184.85	1,622,899.17
CCM	DS Closeout	10,975.00							10,975.00
Christina Facio	District Consultant					421.89			421.89
City of Santa Monica	Application fee for Pre-Construction Plan			12,455.91					12,455.91
City of Santa Monica	Water Meter Reallocation & Permits					9,274.01	62,231.03		71,505.04
City of Santa Monica	Offsite Parking & Support					57,200.00	89,640.00	92,352.00	239,192.00
City of Santa Monica	Fire Hydrant Flow Test						666.83		666.83
Crown Disposal	Demolition & Construction Waste Removal					116,419.73	55,524.12	49,559.69	221,503.54
CY Carlberg	Arborist Services			12,060.00	1,560.00				13,620.00
Daily Breeze	Advertisement			813.77	545.82				1,359.59
Dept of Toxic Substance	Evaluation and Clean up expenses				10,541.80		(4,004.58)		6,537.22
Deyoung Power	4KV Distribution Investigation & Survey							4,117.90	4,117.90
Division of State Arctitect	DSA		531.10	315,346.00			22,700.00	2,851.10	341,428.20
DLR Group - WWOT	Architecture Services							1,575.00	1,575.00
Double Tree (Supreme Parking)	Offsite Parking & Support					1,800.00	26,000.00	85,800.00	113,600.00
EDAW Inc	CEQA Environmental		53,099.42	117,189.36	12,315.49	18,410.39			201,014.66
E J Enterprise	Install Door, Frames & Hardware in the Utility Building							32,635.00	32,635.00
Enterprise Security	Centennial Court Security Camera System							31,343.45	31,343.45
Erickson-Hall	Phase II Construction							207,939.00	207,939.00
Expense Transfer	Emergency Shed Moving					140.00			140.00
									0.00
Fastsigns	Signage					4,172.50			4,172.50
Gaudet Design Group	Arborist Services					5,617.50	5,201.25	97.50	10,916.25
Granier	Shelving & V Hook for Tuff Shed					4,583.82			4,583.82

Hewlett-Packard	COW Cabinets							13,895.28	13,895.28
Highway Product	Time Capsule Container							822.97	822.97
Inc. A-G Sod	Sod & Installation					0.00			0.00
JAMS	Mediation Service for Sundt							3,675.00	3,675.00
Jane Buelow	Outreach - Newsletter				4,934.25	10,564.95	9,231.46	3,860.58	28,591.24
Kendall Planning	Offsite Parking & Support					7,970.00	1,813.34		9,783.34
Kleinfelder	DSA Certification of Prior Project				4,500.00				4,500.00
Korade & Associates	Other Construction Works						44,988.00	788.00	45,776.00
Kroner Environmental Services	Soil Sampling & Testing		57,500.75	25,350.75		4,434.50			87,286.00
LA Opinion	Advertisement			3,741.00					3,741.00
LAHAV Construction	To Provide Power to the relocated gate & golf cart station							16,530.50	16,530.50
Leighton Consulting	Geotechnical Observation & Testing Services						3,901.31		3,901.31
LFR	Soil Testing & Analysis		18,007.63						18,007.63
LI & Associates								4,762.50	4,762.50
Los Angeles Air Balance	Air Balance, Duck Leakage Testing - Samohi Lockers		9,675.00	1,075.00					10,750.00
Los Angeles County Department	Plan Check & Permit Fees for the Storm Drain Connection @ Olympic Blvd							3,621.31	3,621.31
Lucy Fairweather	Outreach - Newsletter						928.33	1,990.00	2,918.33
Macias Maintenance	Misc Upgrades and Other Construction Related Work						2,895.24		2,895.24
Mark Beamish	Furnish & Install Waterproofing/Caulking for Utility Building							15,865.00	15,865.00
Meister, Judith	Survey of Facility Use of Public	3,875.00							3,875.00
Meridian IT	Storage & Software For Transfer of Compass System to District Server							1,931.61	1,931.61
Neil Perlmutter	Change Order Review & Mitigation				390.00			33,120.00	33,510.00
Network Solutions	Technology Services					12,175.00	25,062.50	32,312.50	69,550.00
Ocean Blue	Analytical Report for Soil Cutting		4,750.00	10,994.86		1,450.00			17,194.86
Orbach, Juff & Stuarz	Legal Cost				12,672.33	2,696.82	4,912.58	119,802.29	140,084.02
Parsons	CM Cost				23,273.86	576,049.09	769,560.21	817,538.14	2,186,421.30
Parsons	Commissioning					(1,608.79)	130,561.60	180,507.11	309,459.92
Parsons	DSA Closeout					95,114.88	1,455.84		96,570.72
Parsons	General CM					68,289.01	134,350.09	47,921.44	250,560.54
Parsons	Reimbursable						50,106.51	215,322.57	265,429.08
PCR Services Corporation	PEIR Process - Traffic Studies	220,678.98	81,777.66	15,949.00	9,794.50				328,200.14
Power System	Power Demand and Monitoring			29,050.00					29,050.00
PSOMAS	Aerial Photography & Digital Mapping	64,984.85	80,335.54	71,567.36	2,350.00		1,580.00		220,817.75
RDM Electric								38,546.25	38,546.25
R L Binder	Architectural Design	525,243.70	2,728,182.20	1,673,597.00	283,530.70	285,429.48	1,298,455.14	1,031,461.74	7,825,899.96
Redgate, Patrick DBA AMECO	Solar Panel Replacement (This exp reversed to Pre BB)	87,154.00	(87,154.00)						0.00
Right of Way	Barricades for 7th Court Closure							4,199.85	4,199.85
Robert Lowe	Offsite Parking & District Consultant						843.75	3,412.50	4,256.25
S & S Portables	Rent of Portables					8,195.30	1,139.94	4,829.43	14,164.67
Safe Gas Services	Installation of Utility Building 4' Sub-Drain & 6' SD Pipe							15,585.28	15,585.28
Sandy Pringle	Inspection Services					75,816.00	256,226.00	298,959.00	631,001.00

SGS Plumbing	Installation of new gas line to English Building & Installation of new catch basin							15,925.00	15,925.00
Simplex Grinnell	Fire Alarm & Security						195,787.65	76,691.40	272,479.05
Simpson & Simpson	District Consultant				3,191.16		58,428.62	102,160.68	163,780.46
Simpson & Gumpretz	Testing Consultants							9,576.50	9,576.50
Sir Speedy	Printing & Mailing			1,173.79		529.87	1,281.15		2,984.81
South Bay Landscaping	Sealy Field & other Construction Work					188,955.45		22,311.00	211,266.45
South Coast Air Quality	Permit Processing Fee for Generator							828.73	828.73
Southern California Edison	Relocation of Overhead utilities to underground						35,044.67	1,739.94	36,784.61
Southern California Sanitation	Relocate Temp Construction Gate to Cafeteria Parking Lot & Temp Fence Panels							14,679.12	14,679.12
Spinitar	Laminating Supplies						402.47		402.47
Staples	Office Supplies					28.10	217.52		245.62
State Water Resources	Application fee for Storm Water Prevention			491.00		659.00	659.00	1,736.00	3,545.00
Sundt Construction	Main Construction					10,061,798.00	19,722,880.00	13,978,637.00	43,763,315.00
Super Seal & Stripes	Providing Concrete wheel stops and striping at the cafeteria parking lot							1,582.00	1,582.00
The Lighthouse Corporation	PH2 Utility Building-Generator room Catch basin including all SD piping,							8,930.00	8,930.00
Time Warner	Relocating Time Warner Overhead Service Underground at 7th Court							3,811.00	3,811.00
Vanerum Stelter	FF&E						11,812.00		11,812.00
Verizon	Application fee for Engineering Service			1,600.00				19,823.68	21,423.68
VS America	FF&E							13,595.66	13,595.66
Wallace Laboratory	Testing of Samples Fr Sealy Field to find Cause of Constant Brown Out							290.00	290.00
WLC Architect	Architectural Design			2,220.00	12,877.39	2,000.00			17,097.39
World Oil Reimb	Reimb for Expenses					(3,147.71)			(3,147.71)
Centralized Cost Allocation	.	982,921.69	1,424,747.53	1,863,680.16	1,485,392.52	304,223.48	258,040.22	331,486.38	6,650,491.98
TOTAL		1,895,833.22	4,426,082.83	4,183,874.05	1,874,584.02	12,069,682.42	24,422,522.24	18,732,396.79	67,604,975.57

* 07-08 does not match with QSS because the distribution between schools were done incorrectly. Net difference between all schools is zero.

ACTUAL EXPENSES BY SCHOOL SITE

SMASH/MUIR

RESOURCE - 00000/90500

VENDOR	DESCRIPTION OF SERVICES	07-08 Expenses Fund 21	08-09 Expenses Fund 21	09-10 Expenses Fund 21	10-11 Expenses Fund 21	11-12 Expenses Fund 21	12-13 Expenses Fund 21	13-14 Expenses Fund 21	Total Expenses
ARB Inc	Gas Leak Repair				96,736.93				96,736.93
Commercial Door	Furnish & Install posts & required foundation			9,608.00	11,732.00				21,340.00
CY Carlberg	Arborist Services				345				345.00
Enterprise Security Inc	Repair & Replacement of Scratched Lens on Alphone Keypad							213.11	213.11
Division of State Arctitect	DSA			100	1,151.89	627.75	500		2,379.64
Inspection Specialist	Inspection			1,200.00					1,200.00
Jane Buelow	Outreach - Newsletter				544				544.00
Neil Perlmutter	Change Order Review & Mitigation				11,760.00	300			12,060.00
Parsons	Commissioning					(173.48)			(173.48)
Parsons	DSA Closeout					4,691.04	242.64		4,933.68
West Coast Cable	IP Access Control Unit ot Front Entrance				6,440.62				6,440.62
Centralized Cost Allocation			388.46	508.14	2,787.34				3,683.94
Osborn	Architectural Design	63,625.00	12,890.00						76,515.00
PSOMAS	Aerial Photography & Digital Mapping	8,600.71							8,600.71
Sir Speedy	Printing				206.24				206.24
Sir Speedy	Printing				74.08				74.08
TOTAL		72,225.71	13,278.46	11,416.14	131,778.10	5,445.31	742.64	213.11	235,099.47

* 07-08 does not match with QSS because the distribution between schools were done incorrectly. Net difference between all schools is zero.

**ACTUAL EXPENSES BY SCHOOL SITE
WASHINGTON WEST CDS
RESOURCE - 0000/90500**

VENDOR	DESCRIPTION OF SERVICES	07-08 Expenses Fund 21	08-09 Expenses Fund 21	09-10 Expenses Fund 21	10-11 Expenses Fund 21	11-12 Expenses Fund 21	12-13 Expenses Fund 21	13-14 Expenses Fund 21	Total Expenses
2MG Construction	Build out of basement Cubicles, Countertops, Molding, & Bubber Base in 2 res						8,827.00		8,827.00
A C Pros	Electrical Distribution Contract & Redirection of 3 FAU Vents						36,500.00	6,300.00	42,800.00
A J Fistes	Painting of Exterior & Interior of Washington Facilities Bldg						22,495.00		22,495.00
American Reprographics	Blue Prints			97.03		136.07	275.87		508.97
Andy Gump	Restroom Rentals							1,439.59	1,439.59
Architectural Sign	Address Numbering 2828						385.12		385.12
Arieden	Provide & Install 10 efficient, 40,000 BTU natural Gas Furnaces						30,083.00		30,083.00
ATC	Hazardous Material Investigation		4,931.00		2,040.00	14,528.77	14,871.35		36,371.12
B-LINE	Electricity		10,855.50						10,855.50
Best Contracting	Construction Contract						111,860.00		111,860.00
California Office System	Shelving & Installation & ADA Counter & Office						40,646.40		40,646.40
Clark Security	Door Lock for Cubicle in Room 7						519.69		519.69
Commercial Interior Resource	Install Owner Furnished Carpet						4,571.00		4,571.00
Commercial Scaffolding	Scaffolding Rental for Exterior Work						8,615.00		8,615.00
Commercial Paving	Overlay Existing Parking Lot						44,850.00		44,850.00
Commercial West	Flooring - Strip Adhesive Rooms 1,6,7/3,4,5						2,625.00		2,625.00
Crown Disposal	Demolition & Construction Waste Removal					4,404.49	11,352.70		15,757.19
CSI Fullmer	Installation of 12 KI Hurry Up Tables						540.00		540.00
CTL Environmental	Air Monitoring		6,522.27						6,522.27
CWC Equipment	Furnish & Install Blinds						2,994.00		2,994.00
CY Carlberg	Arborist Services			2,535.00					2,535.00
Dempsey Electric	Parking Lot & Exterior Lighting & Bird Deterrents & Relocate Irrigation Plug						31,183.56		31,183.56
Direct Source	Network Cabling, Install Projector Screens, Move Phones & Computers & IDF Racks						35,266.44		35,266.44
EAS Bobcat	Concrete Work						44,350.00		44,350.00
Economy Glass	Installation & Materials to replace glass window panes						11,644.48		11,644.48
E J Enterprise	Wood Doors & Access Control Interior Door Assembly						8,249.00		8,249.00
Elite Cleaning Specialist	Final cleaning - Front Stairs, Hallway, Room (1-7) Bathrooms, Basement Room						6,995.00		6,995.00
Espinoza Construction	New Concrete Stain, Sealer & Deep Cleaning of Tile Floor, Patching & Repair						8,877.00	750.00	9,627.00
Fire Protection Safety Services	Furnish, Install & Mount 5 - 5lb Fire Extinguishers							737.07	737.07

Gaudet Design Group	Arborist Services						6,378.75		6,378.75
Go Construction	Miscellaneous Construction						29,000.50		29,000.50
Grainer	Storage Racks						1,379.15		1,379.15
HED	Architectural Design	43,465.24	7,690.00	73,462.00	19,600.00				144,217.24
Interior Resource									0.00
Jane Buelow	Outreach - Newsletter					27.94	157.50		185.44
Karcher Environmental	Asbestos/Lead Removal		23,010.00						23,010.00
King Relocation	Move Management Services						10,668.95		10,668.95
Korade & Associates	Remove & Replace ceiling for Arch Insp & Other Construction Work			29,729.94			10,000.00		39,729.94
Krueger Interior	Tables, Chairs Etc						6,254.70		6,254.70
Lahav Construction	Upgrade Electrical Services to CDS Building						44,880.00		44,880.00
Land & Air Survey	Design Survey				6,960.00				6,960.00
L A Pros	Removal of 5X30 Section of Asphalt B\T Storage Shed & Fence						40,625.00		40,625.00
Macias Maintenance	Plumbing						44,575.00		44,575.00
Micelli Design	Misc Demo & Repair						39,838.50		39,838.50
Mr. Move/Load Rock & Roll	Moving Classroom		4,837.57						4,837.57
Naylor Painting	Paint & Sealer						4,029.80		4,029.80
Neil Perlmutter	Change Order Review & Mitigation				150.00				150.00
Network Solutions	Technology Services						14,040.00	6,800.00	20,840.00
Obra Esthetica	Painting Classrooms		13,000.00						13,000.00
Osborn	Architectural Design			26,550.00					26,550.00
Padilla Plumbing	Remove & Dispose of toilet expose waist line, Install 2' ball valve							2,870.00	2,870.00
Parsons	CM Cost					30,000.00	27,960.64		57,960.64
Parsons	Commissioning					(1,355.02)			(1,355.02)
Parsons	DSA Closeout					889.68			889.68
Parsons	General CM					16,683.92	249,239.06		265,922.98
PBS&J	CEQA Environmental		6,216.54						6,216.54
Piana Construction	Paint & Stucco Patch Room & Painting Concrete Floor						20,702.50		20,702.50
Prestige Striping	Parking Lot Striping, Numbering & Sealer						12,090.00		12,090.00
PSOMAS	Aerial Photography & Digital Mapping	13,722.42	27,439.50						41,161.92
PSOMAS	Aerial Photography & Digital Mapping		6,710.58						6,710.58
RAP Bobcat	Supply Install rebar, repair damaged Curb, Install concrete Pad, supply						43,300.00		43,300.00
Robert Lowe	Offsite Parking & District Consultant						23,981.25		23,981.25
Santa Monica Fence	Fencing		7,795.13	720.00					8,515.13
SGS Plumbing	Main Line Plumbing Replacement, Emergency Sewer Cleanup & repair							19,745.00	19,745.00
Simovich	Room 1 Entry Door						4,042.00		4,042.00
Simplex Grinnell	Fire Alarm & Security						206,950.73	735.50	207,686.23
South Bay Construction	Install Irrigation Service & Supply & Install Fiberglass Planters Wee Barriers						44,575.00		44,575.00
Southern California Sanitation	Temporary Fencing & Toilets Rentals						4,148.38		4,148.38
Specialized Environmental	Removal of Asbestos					46,767.00			46,767.00
Spectra/Shaw	Flooring		22,365.00						22,365.00

Stumbaugh	Restroom Partition						3,814.00		3,814.00
Tandus	Floor Carpet Installed						8,938.29		8,938.29
TMAD	Testing Services						14,000.00		14,000.00
Tom Williams Signs	Permanent Signs			288.87					288.87
Western Fence	Labor & Material to Install Fence & Gates						44,889.00		44,889.00
Centralized Cost Distribution		24,721.11	35,990.01	47,077.73	37,521.94	7,684.70	6,518.26		159,513.75
TOTAL		81,908.77	177,363.10	180,460.57	66,271.94	119,767.55	1,455,553.57	39,377.16	2,120,702.66

* 07-08 does not match with QSS because the distribution between schools were done incorrectly. Net difference between all schools is zero.

ACTUAL EXPENSES BY SCHOOL SITE

WEBSTER ELEMENTARY SCHOOL

RESOURCE - 00000/90500

VENDOR	DESCRIPTION OF SERVICES	07-08 Expenses Fund 21	08-09 Expenses Fund 21	09-10 Expenses Fund 21	10-11 Expenses Fund 21	11-12 Expenses Fund 21	12-13 Expenses Fund 21	13-14 Expenses Fund 21	Total Expenses
AAA Flag	Banners				159.13				159.13
American Reprographics	Blue Prints			2,045.10	55.43	85.97	46.35		2,232.85
ATC	Hazardous Material Investigation			11,038.25					11,038.25
Atkins PBS&J	CEQA Environmental		15,616.61	6,816.39	24,210.64	13,202.85			59,846.49
California Geological Survey	Fee for Review of Geological Hazard Report							3,600.00	3,600.00
Christina Facio	District Consultant					131.25			131.25
City of Malibu	Flood Permit				5,000.00	(5,000.00)			0.00
CY Carlberg	Arborist Services				1,680.00				1,680.00
Daily Breeze	Advertisement			208.31					208.31
Division of State Architect	DSA		4,018.30	630	589.82	(194.86)	409.26		5,452.52
Drew Lewis	Sewer Drain line Surveys & Investigation		6,400.00						6,400.00
Gateway Science	Inspection Service				36,913.51				36,913.51
Geoconcepts	Additional Septic System Investigation			22,960.00					22,960.00
HMC	Architectural Design	61,587.44	79,947.20	43,582.43	24,031.48		36,751.56	21,420.20	267,320.31
Integrated Performance	Sampling & Testing Ground Water			9,886.80					9,886.80
Jane Buelow	Outreach - Newsletter				807.5	132.94			940.44
L.A. Hydro	Perform Camera & Possible Jet Flushing of 48' Storm Drain Line							2,545.00	2,545.00
Law Fire Protection Services	Fire Protection & Safety				517				517.00
Leighton Consulting	Geotechnical Investigation			9,400.00				14,300.00	23,700.00
Malibu Surfside	Advertisement			300					300.00
Neil Perlmutter	Change Order Review & Mitigation						4,680.00		4,680.00
Orbach	Legal Services					2,008.38			2,008.38
Parsons	CM Cost				75,869.51	10,274.35	27,828.25	1,400.00	115,372.11
Parsons	Commissioning					(1,062.35)			(1,062.35)
Parsons	DSA Closeout					13,183.44	323.52		13,506.96
Parsons	General CM					828.47			828.47
Prestige Striping	Striping Parking Lot for School Bus						12,055.00	2,130.00	14,185.00
PSOMAS	Aerial Photography & Digital Mapping	12,761.33	38,822.87	22,921.00		1,805.87			76,311.07
Reyes & Sons	Fire Alarm Replacement			80,267.60	330,816.26				411,083.86
Sir Speedy	Printing				82.31				82.31
South Bay Landscaping	Relocate Irrigation Clock & Controller							3,150.00	3,150.00
Southern California Sanitation	Fencing & Gates						41,954.47		41,954.47
Topanga Underground	Septic System Investigation		21,871.92	10,939.25					32,811.17
Centralized Cost Allocation		4,892.72	21,479.75	45,433.74	36,211.65	7,416.44	6,290.64	8,155.24	129,880.18
TOTAL		79,241.49	188,156.65	266,428.87	536,944.24	42,812.75	130,339.05	56,700.44	1,300,623.49

* 07-08 does not match with QSS because the distribution between schools were done incorrectly. Net difference between all schools is zero.

ACTUAL EXPENSES BY SCHOOL SITE

WILL ROGERS ELEMENTARY SCHOOL

RESOURCE - 00000/90500

VENDOR	DESCRIPTION OF SERVICES	07-08 Expenses Fund 21	08-09 Expenses Fund 21	09-10 Expenses Fund 21	10-11 Expenses Fund 21	11-12 Expenses Fund 21	12-13 Expenses Fund 21	13-14 Expenses Fund 21	Total Expenses
AAA Flag	Banners				159.14				159.14
American Reprographics	Blue Prints			1,668.78	5.49				1,674.27
ATC	Hazardous Material Investigation		4,612.20						4,612.20
BPI Inspection	Inspection Service for Modular Classroom Building			600.00	13,620.00				14,220.00
Commercial Door	Furnish & Install posts & required foundation			12,981.00					12,981.00
CY Carlberg	Arborist Services				485.00				485.00
Daily Breeze	Advertisement			231.42					231.42
Division of State Architect	DSA Services			1,339.27	842.23		1,110.06		3,291.56
Fast Track	New Entry Gate and Main Office Reconfiguration			23,128.66	152,682.52				175,811.18
Inspection Specialist	Inspection Services related to gate installation			1,540.00					1,540.00
JJ Plumbing	Plumbing			2,400.00					2,400.00
King Relocation	Move Management			3,860.00	1,646.82				5,506.82
Korade & Associates	Remove & Replace ceiling for Arch Insp			1,666.85					1,666.85
Leighton Consulting	Geotechnical & Testing Services				1,500.00				1,500.00
MTGL	Testing & Special Inspection				544.00				544.00
Osborn	Architectural Design	85,618.00	22,055.00	7,927.00	3,800.00	410.00	410.00		120,220.00
Parsons	CM Cost				38,774.71				38,774.71
Parsons	Commissioning					(182.52)			(182.52)
Parsons	DSA Closeout					18,845.04	2,264.64		21,109.68
PBS&J	CEQA Environmental		421.25	520.20					941.45
PSOMAS	Aerial Photography & Digital Mapping	4,875.00							4,875.00
Tandus US Inc	Sheet Carpeting			2,091.02					2,091.02
WLC Architect	Architectural Design			4,515.00	6,830.00				11,345.00
Centralized Cost Allocation			2,193.68	5,394.69	4,831.23				12,419.60
TOTAL		90,493.00	29,282.13	69,863.89	225,721.14	19,072.52	3,784.70	0.00	438,217.38

* 07-08 does not match with QSS because the distribution between schools were done incorrectly. Net difference between all schools is zero.

ACTUAL EXPENSES BY SCHOOL SITE

DATA CENTER

RESOURCE - 00000/90500

VENDOR	DESCRIPTION OF SERVICES	07-08 Expenses Fund 21	08-09 Expenses Fund 21	09-10 Expenses Fund 21	10-11 Expenses Fund 21	11-12 Expenses Fund 21	12-13 Expenses Fund 21	13-14 Expenses Fund 21	Total Expenses
American Reprographics	Blue Prints				782.32				782.32
Daily Breeze	Advertisement				528.54				528.54
Intell-Tech	Data Center Infrastructure (S/B Tech Budget-Rev in 11-12)				512,034.43	(512,034.43)			0.00
Neil Perlmutter	Change Order Review & Mitigation						5,760.00		5,760.00
Parsons	CM Cost (from Malibu Contract)						140.00		140.00
Santa Monica Daily Press	Advertisement				115.30				115.30
WWCOT	Architectural Design		2,235.50	86,084.90	21,213.70	9,331.00	3,269.25		122,134.35
TOTAL		0.00	2,235.50	86,084.90	534,674.29	(502,703.43)	9,169.25	0.00	129,460.51

* 07-08 does not match with QSS because the distribution between schools were done incorrectly. Net difference between all schools is zero.

TECHNOLOGY EXPENSES

FUND 21 - BUILDING FUND RESOURCE - 00003/90503

VENDOR	DESCRIPTION OF SERVICES	07-08 Expenses Fund 21	08-09 Expenses Fund 21	09-10 Expenses Fund 21	10-11 Expenses Fund 21	11-12 Expenses Fund 21	12-13 Expenses Fund 21	13-14 Expenses Fund 21	Total Expenses
Academic Superstore						15,312.58			15,312.58
American Reprographics	Blue Prints				2,904.89			239.78	3,144.67
Apple Computers	Model Classroom Computers - 3 schools & Mac Computers for other Sites		38,685.39	207,608.88		406,545.88			652,840.15
AT & T	Lan-Wan,Calnett II, CMAS		4,625,562.83	1,506,132.42	530,745.71	38,181.65	14,109.75		6,714,732.36
Best Buy	Model Classroom Webcam - 2 Classrooms		769.34						769.34
Cable & Kits	Cisco Universal Locking Wall Mount Kit				1,830.00				1,830.00
California Office System	Lecterns & related equipment			15,176.24					15,176.24
Cartier Electrical Technologies, Inc	Classroom Technology Enhancement			211,655.61					211,655.61
CCS Presentation System	Model Classroom Smart Airliner Wireless Slate - 5 Schools		2,208.67		137,012.71	8,905.58			148,126.96
CDW-G Computing Solution	Smart Rack Mount Web Card, Smart UPS, Digital Power Dist Unit		7,033.26			568.76			7,602.02
Digital Network, Inc	Classroom Technology Upgrade -SAMOHI		11,972.00		249,004.62	4,253.44			265,230.06
Digital Network, Inc	Classroom Technology Upgrade - Olympic		11,433.00						11,433.00
Digital Network, Inc	Classroom Technology Upgrade - Adams		11,203.00		3,904.00	204,852.55			219,959.55
Digital Network, Inc	Classroom Technology Upgrade - Lincoln		11,459.00	27,803.72	27,458.55	171,429.45			238,150.72
Digital Network, Inc	Classroom Technology Upgrade - Malibu		7,906.00		2,810.88	144,437.12			155,154.00
Division of State Architect	DSA		1,867.03						1,867.03
Gateway Companies	Model Classroom Computers - 2 schools		23,370.12						23,370.12
Golden Star	Computers & Laptops					364,433.68			364,433.68
Intelli-Tech	3 Laptop			24,790.24	8,800.00	512,034.43			545,624.67
Jane Buelow	Outreach - Newsletter				1,292.00				1,292.00
John Rudy	Material for Data Infrastructure				2,610.75				2,610.75
Malibu Surfside, Daily Breeze	Advertisement				874.68				874.68
Meridian IT	HP Server						39,522.88	24,777.42	64,300.30
Networld Solution	Project Management		90,000.00	248,355.00	265,372.50	165,431.67	78,080.00	812.50	848,051.67
Parsons	Construction Management							2,494.90	2,494.90
Parsons	Commissioning					(10,276.54)			(10,276.54)
Parsons	Tech PM					24,583.68			24,583.68
Parsons	General CM					254.92			254.92
RDM Electric	Obtain Voltage/Amperage Readings Off Electrical Panels							1,850.00	1,850.00
Sehi Computers	Model Classroom HP Laser jet Printers - 5 Classroom		1,225.50	7,902.00		21,769.09			30,896.59
Sparky Data	Data & Telecom Consulting			12,000.00	5,100.00				17,100.00
System Tech Assoc	Three Servers & Associated Equipment, Maintenance & support Services		82,498.82						82,498.82
Verizon	Pre-Engineering Study		13,065.88	(12,315.88)					750.00
WWCOT	Architectural Design		69,519.00			32,351.25		125,236.78	227,107.03
Yuang Tai	Estimating Services							2,440.00	2,440.00
	Smart Board	114,234.75					48,393.65		162,628.40
Centralized Expense Transfer	BB Data Center		252,255.37	329,969.57	262,992.73	53,863.27			899,080.94
Total		114,234.75	5,262,034.21	2,579,077.80	1,502,714.02	2,158,932.46	180,106.28	157,851.38	11,954,950.90



Measure BB: Safety and Security Projects
2013 - 2014

Measure BB: Safety and Security Projects

Summary of Completed Elementary Projects 2008-2013,

data June 30, 2014

Design and Planning

Schematic Designs and planning efforts included campus wide studies for improved siting studies, replacement of portable classrooms and many proposals for campus site improvements for parking, play yards, and recapturing open space. Designs included two story structures for classrooms

Construction and Management

Measure BB Safety and Security projects included modernization of security controls at schools main entrances, gates, drop offs, and fencing; these exterior projects required upgrades to ADA parking, curbs, walks and landscapes/lighting; Interior improvements to support the safety and security efforts included reconfigurations of main offices, principals offices, and administration areas, new or upgrades to fire alarms systems, furnaces, HVAC, and new trenchless gas supply line replacements.

Following school sites included:

Franklin

Grant

McKinley

Roosevelt

Smash/Muir

Will Rogers

Juan Cabrillo

Point Dume

Webster

Franklin Elementary

Allocation/Budget:

Design & Planning \$207,903.00

Schematic Design & Planning- Completed August 2008

A new two-story building with six classrooms proposed at the west side of the campus, adjacent to the existing Library. The studies included an expansion of the Library; Site work to include ADA pathways and general improvements.

Technology- Completed December 2011

\$10.8m in Technology upgrades throughout the District to improve Local Area Network, fiber optic pathways, and communication;

Classroom upgrades include:

- LCD Projectors, Speakers, & Smartboards
- Mixer/amplifier, Document Camera, & DVD
- High speed Internet-WiFi, Wireless network, Printers, and Computers
- VOIP Telephones and PA



Grant Elementary

Allocation/Budget:

Design & Planning:	\$210,630.00
Construction & Management:	\$321,090.00
Program cost:	\$ 20,002.00

Schematic Design & Planning- Completed September 2009

New classrooms-portable replacement,
Site work improvements
New entrance court and fencing

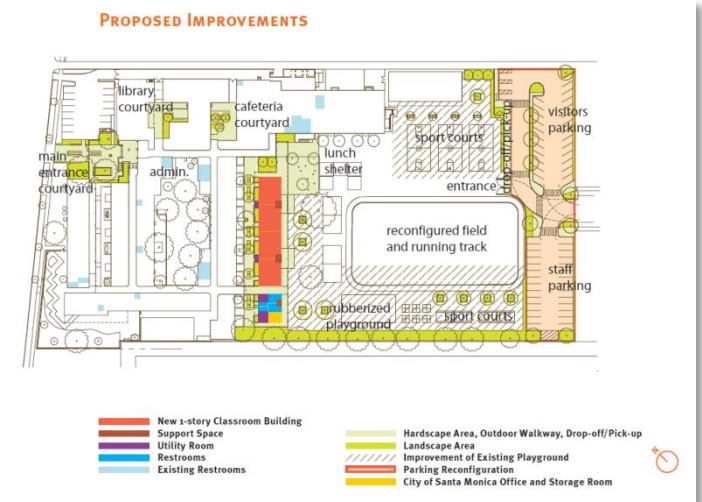
New Entry and Courtyard – Completed September 2010

New Entry courtyard and Landscaping for waiting and security
New ADA ramps, seating, and welcoming landscaping
New entry sequence with walks, seating, and landscaping
Parking lot improvements

Technology- Completed December 2011

\$10.8m in Technology upgrades throughout the District to improve Local Area Network, fiber optic pathways, and communication; Classroom upgrades include:

- LCD Projectors, Speakers, & Smartboards
- Mixer/amplifier, Document Camera, & DVD
- High speed Internet-WiFi, Wireless network, Printers, and Computers
- VOIP Telephones and PA



Schematic Design & Planning



New Entry and Courtyard

Allocation/Budget:

Design & Planning:	\$540,483.00
Construction & Management:	\$790,045.00
Program cost:	\$ 59,553.00

Schematic Design & Planning- Completed September 2009

New site work and 2 Story portable classroom replacement; Modernization of Administrative Offices and Entry

Modernization Office & Entry- Completed January 2011

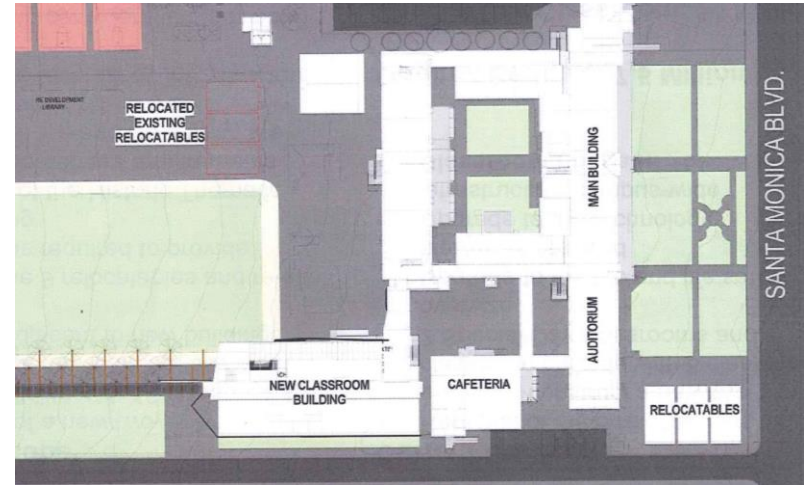
New Courtyard Entry and waiting area; New gates; Main office and Principal office reconfiguration; New restrooms

Technology- Completed December 2011

\$10.8m in Technology upgrades throughout the District to improve Local Area Network, fiber optic pathways, and communication;

Classroom upgrades include:

- LCD Projectors, Speakers, & Smartboards
- Mixer/amplifier, Document Camera, & DVD
- High speed Internet-WiFi, Wireless network, Printers, and Computers
- VOIP Telephones and PA



Schematic Design & Planning



Office Modernization

Roosevelt Elementary

Allocation/Budget:

Design & Plans: \$352,098.00

Schematic Design & Planning- Completed September 2009

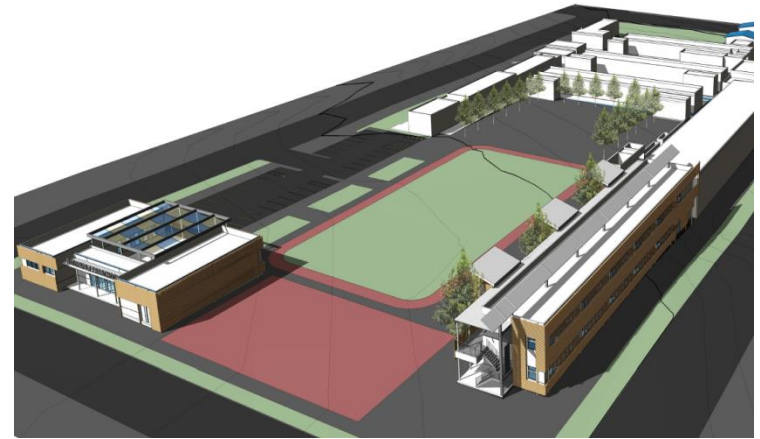
2 Story portable classroom replacement; New classrooms preschool, Administration and athletic improvements

Technology- Completed December 2011

\$10.8m in Technology upgrades throughout the District to improve Local Area Network, fiber optic pathways, and communication;

Classroom upgrades include:

- **LCD Projectors, Speakers, & Smartboards**
- **Mixer/amplifier, Document Camera, & DVD**
- **High speed Internet-WiFi, Wireless network, Printers, and Computers**
- **VOIP Telephones and PA**



Schematic Design & Planning



Smash/Muir

Allocation/Budget:

Design & Plans:	\$ 85,501.00
Construction:	\$129,061.00
Program Cost:	\$ 4,089.00

Schematic Design & Planning- Completed September 2008

New pedestrian gate with 2-way voice communication and visual controls; Key pad, cameras, and electrical pathways;

Entry Gate & Gas repiping Completed January 2011

Matching the existing design, the single gate included exiting compliance and improved security with live camera. Re-piping of all underground gas supply lines to each structure.

Technology- Completed December 2011

\$10.8m in Technology upgrades throughout the District to improve Local Area Network, fiber optic pathways, and communication;

Classroom upgrades include:

- **LCD Projectors, Speakers, & Smartboards**
- **Mixer/amplifier, Document Camera, & DVD**
- **High speed Internet-WiFi, Wireless network, Printers, and Computers**
- **VOIP Telephones and PA**



Will Rogers Learning Community

Allocation/Budget:

Schematic Design & Plans:	\$392,814.00
Construction & Management:	\$151,245.00
Program cost:	\$ 13,549.00

Schematic Design & Planning- Completed September 2009

Proposed MPR and portable classroom replacement;
Modernization of Administrative Offices and Entry

Modernization Office & Entry- Completed January 2011

New Courtyard Entry and waiting area; New gates;
Main office and Principal's office reconfiguration; 2 New pre-school portables with restrooms

Technology- Completed December 2011

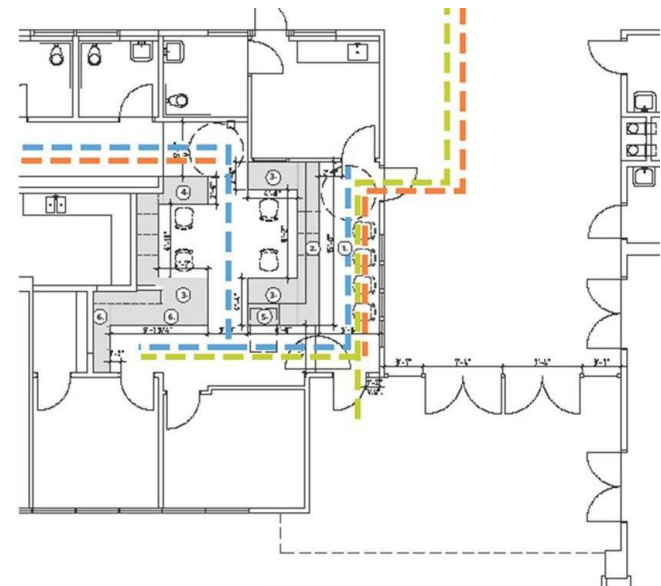
\$10.8m in Technology upgrades throughout the District to improve Local Area Network, fiber optic pathways, and communication;

Classroom upgrades include:

- **LCD Projectors, Speakers, & Smartboards**
- **Mixer/amplifier, Document Camera, & DVD**
- **High speed Internet-WiFi, Wireless network, Printers, and Computers**
- **VOIP Telephones and PA**



Entry Gate



New Office & Security Controls

Juan Cabrillo Elementary

Allocation/Budget:

Schematic Design & Plans:	\$258,490.00
Construction & Management:	\$273,275.00
Program cost:	\$ 30,461.00

Schematic Design & Planning- Completed September 2009

2 story classroom replacements; Modernization of Administrative Offices and Entry gates.

Modernization Office & Entry- Completed May 2011

New Courtyard Entry; New gates and landscaping

Technology- Completed December 2011

\$10.8m in Technology upgrades throughout the District to improve Local Area Network, fiber optic pathways, and communication;

Classroom upgrades include:

- **LCD Projectors, Speakers, & Smartboards**
- **Mixer/amplifier, Document Camera, & DVD**
- **High speed Internet-WiFi, Wireless network, Printers, and Computers**
- **VOIP Telephones and PA**



Pt. Dume Elementary

Allocation/Budget:

Design & Planning:	\$ 407,300.00
Construction & Management:	\$ 691,606.00
Program Cost:	\$ 67,907.00

Schematic Design & Planning- Completed September 2008

Proposed site plans including portable replacement with new classrooms; New gas supply and new heating units serving the buildings.

Entry Gate & Gas repiping Completed September 2012

Re-piping of all underground gas supply lines to each structure.

Technology- Completed December 2011

\$10.8m in Technology upgrades throughout the District to improve Local Area Network, fiber optic pathways, and communication;

Classroom upgrades include:

- LCD Projectors, Speakers, & Smartboards
- Mixer/amplifier, Document Camera, & DVD
- High speed Internet-WiFi, Wireless network, Printers, and Computers
- VOIP Telephones and PA



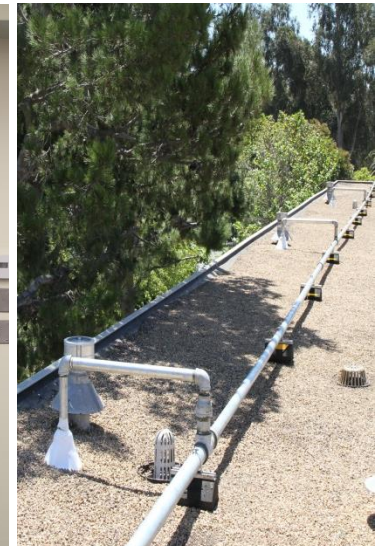
Site Plan

Santa Monica-Malibu Unified School District

Pt. DUME MARINE SCIENCE SCHOOL

SCHEMATIC DESIGN PART 1

15



Webster Elementary

Allocation/Budget:

Design & Planning:	\$ 1,640,609.00
Construction & Management:	\$ 785,314.00
Program Cost:	\$ 124,805.00

Schematic Design & Planning- Completed September 2008

Proposed site plans including portable replacement with new 2 story classrooms; New fully automated fire alarm, additional security fencing enclosing campus, and new drop off and bus loading striping.

Fire Alarm & Fencing Completed April 2013

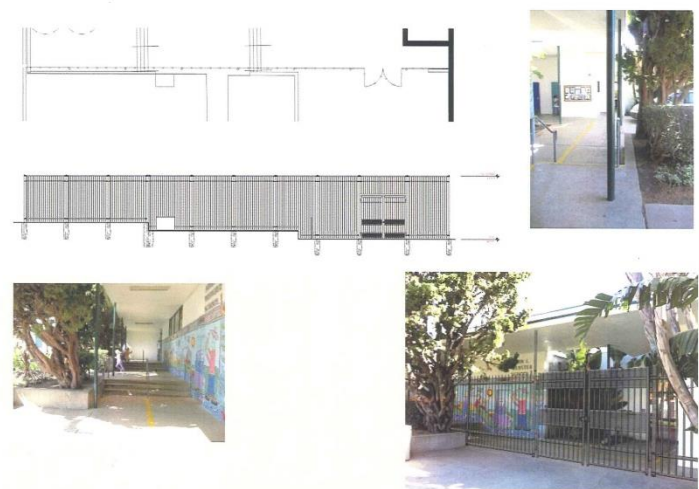
New Fire alarm and rear/front entry fencing and gates, drop off striping.

Technology- Completed December 2011

\$10.8m in Technology upgrades throughout the District to improve Local Area Network, fiber optic pathways, and communication;

Classroom upgrades include:

- LCD Projectors, Speakers, & Smartboards
- Mixer/amplifier, Document Camera, & DVD
- High speed Internet-WiFi, Wireless network, Printers, and Computers
- VOIP Telephones and PA





Measure BB: Major Construction and Modernization Projects
2013 - 2014

John Adams Middle School

Data 7/1/14

Site Allocation/Budget:	\$ 25,226,672.00
Design & Planning:	\$ 3,965,565.00
Construction & Management:	\$ 19,395,130.00
Program Cost:	\$ 1,865,974.00

Phase 1a & 1b: -Completed August 2011

New Green Fringe and Relocatable
Landscape Perimeter of Synthetic Track
Temporary Housing Admin and Classroom

Technology- Completed December 2011

\$10.8m in Technology upgrades throughout the District to improve Local Area Network, fiber optic pathways, and communication;

Classroom upgrades include:

- **LCD Projectors, Speakers, & Smartboards**
- **Mixer/amplifier, Document Camera, & DVD**
- **High speed Internet-WiFi, Wireless network, Printers, and Computers**
- **VOIP Telephones and PA**

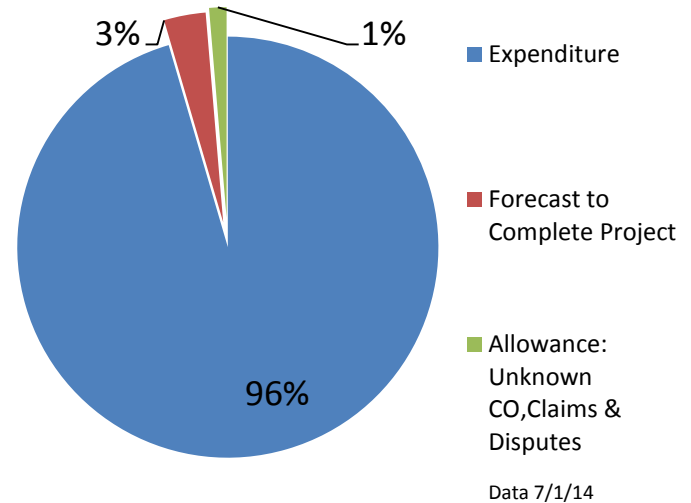
Phase 2: -in Closeout Occupancy Jan-August 2013

Replacement of 9 Classrooms
Addition of Attendance/Admin
Modernization of Art Room, Admin offices



JAMs Projects-Unallocated Additional Scope

DSA Legacy closeout
 Classroom technology FF&E
 Abatement of TSI Wrapped Pipe
 Upgrade Gas Line, Electrical Line, Soil Remediation,
 Added Waterproofing, Added Steel Plates, Additional
 Structural Requirement, Added PA Speakers,
 Temporary Tent Structures
 Enhancements for Sun control, Earth tube
 PV/Fans Motors, BMS Controls, Solar Chimney/Heat
 Mitigation, Heating Elements, Structural , Termites,
 Environmental Mitigation Demolition/Soil



Budget:

Total Site Allocation Budget (B)	Expenditures (c-2)	Forecast to Complete the Project (c-1+(D))	Allowance: Unknown CO, Claims & Disputes	Remaining balance (f)
\$ 25,226,672.00 ** Project Budget was reduced by \$1,001,600.00 for reduction of the program budget	\$24,408,661.00	\$818,509.00	\$340,316.00 (\$2,500,000.00 in alleged claims not filed yet)	(\$497.58.00)

Schedule:

	2008	2009	2010	2011	2012	2013	2014	2015
Original		DSA	3 Phases - 35 months					
Current	Document	DSA	Ph. III – Construct & Closeout 50mo					

Lincoln Middle School

Allocation/Budget:	\$31,126,354.00
Design & Planning:	\$ 4,556,435.00
Construction & Management:	\$24,566,484.00
Program Cost:	\$ 2,003,436.00

Phase 1a & 1b: Completed January 2012

Site utilities and Relocatable
Modernization 4 classrooms, 2 science labs & prep

Technology- Completed December 2011

\$10.8m in Technology upgrades throughout the District to improve Local Area Network, fiber optic pathways, and communication;

Classroom upgrades include:

- **LCD Projectors, Speakers, & Smartboards**
- **Mixer/amplifier, Document Camera, & DVD**
- **High speed Internet-WiFi, Wireless network, Printers, and Computers**
- **VOIP Telephones and PA**

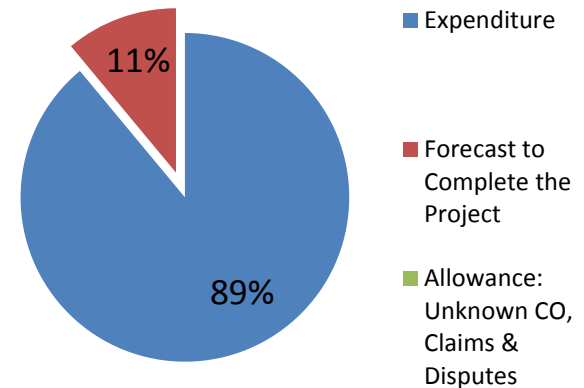


Phase 2: Closeout Oct. 2014 Occupancy Dec. 2014

2 story facility housing new Library, reading rooms, chorus room, book rooms, community spaces
6 standard classrooms, 2 science labs & prep
Restrooms, outdoor performance area

Lincoln Projects-Unallocated Additional Scope

DSA Legacy closeout
 Classroom technology FF&E
 Abatement of TSI Wrapped Pipe
 Upgrade Gas Line, Electrical Line, Soil Remediation,
 Termite, safety rails, gates
 Building Demo Waste Removal & Recycling
 Traffic Control Permits
 Fireproofing Scope of Work
 Mobilization due to DSA Stop Work Notice
 DSA Requirement to add Structural Steel Plates & Welding
 Relocate Underground Gas Lines



Data 7/1/14

Total Site Allocation Budget	Expenditures	Forecast to Complete the Project	Allowance: Unknown CO, Claims & Disputes	Remaining balance
\$31,126,354.00 ** Project Budget was reduced by \$1,455,383.00 for reduction of the program budget	\$27,692,376	\$3,434,476	\$0.00	(\$498.30)

Schedule:

	2008	2009	2010	2011	2012	2013	2014	2015
Original	DSA		17 months					
Phase I:	Documents	DSA		10 mo.				
Phase II:	Documents	DSA				Construction 24 mo.		

Edison Language Academy

Allocation/Budget:	\$52,571,608.00
Design & Planning:	\$ 6,689,368.00
Construction & Management:	\$41,976,860.00
Program Cost:	\$ 3,905,384.00

Phase 1 : -Closeout Occupancy Jan 2014

New 2 Story Elementary school,
27 Classrooms for K-5, New Library,
Administrative Office, Cafeteria,

Phase 2: -Scheduled Occupancy Nov. 2015

Pre-School/ Bldg. w/2 Classrooms and
Outdoor Learning Areas, Playfields
PE Building, Courts, Parking, water rain
Harvesting system, Demolition *

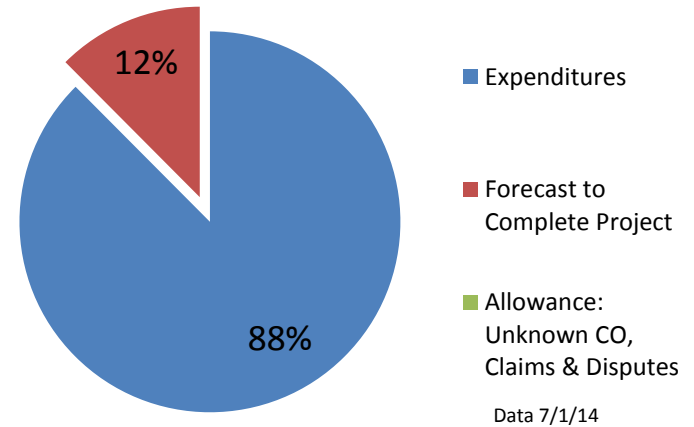
Demolition delay 10months associated to EPA and
new District standards

Land Acquisition cost	\$3,540,041.00
------------------------------	-----------------------



Edison Unallocated Budget/Additional Scope:

Temporary Housing Pre-school (Rogers)
 Temporary Housing Edison, DSA Legacy Closeout
 Classroom Technology FF&E, Temporary Playfields/Tent
 Structures, Enhancements for Exterior Safety, Guard Rails
 Planters, Gates Modification, Screening, HVAC, BMS
 Controls, Fans/Solar Chimney/Heat Mitigation,
 Environmental, Demolition, Soil, Air Mitigation
 Acoustic Treatment, Irrigation Revision, Relocate Roof
 Drains/ Hydronic Lines/Utility Connection/Street Gutter
 Elevations, Bird Abatement Wire



Budget:

Total Project Allocation Budget (b)	Expenditures (c-2)	Forecast to Complete the Project (c-1+d)	Allowance: Unknown CO, Claims & Disputes	Remaining balance (f)
\$52,571,608.00	\$46,020,621.00	\$6,551,492.00	\$0.00	(\$505.51)
** Project Budget was reduced by \$3,066,574.00 for reduction of the program budget			(\$4,000,000.00 in alleged claims not filed yet)	

Schedule:

	2008	2009	2010	2011	2012	2013	2014	2015	2016
Original	[Green bar]		34 months						
Current	Document		DSA	Construct 52 months					

Allocation/Budget:	\$80,548,384.00
Design & Planning:	\$ 12,565,327.00
Construction & Management:	\$61,516,812.00
Program Cost:	\$ 6,466,239.00

Phase 1: Main Bldg. Occupancy August 2015

15 Science Labs, 18 Classrooms , Computer Lab
 2 Special Education Classrooms
 Auto Shop, Administrative Offices
 Campus wide electrical upgrades

Phase 2: Site Improvements, Occupancy April 2016

Site Utilities, Parking, Softball Field, ADA ramps

Technology- Completed December 2011

\$10.8m in Technology upgrades throughout the District to improve Local Area Network, fiber optic pathways, and communication;

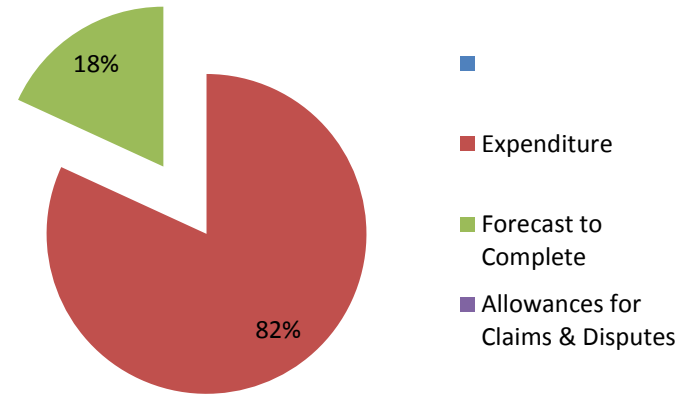
Classroom upgrades include:

- **LCD Projectors, Speakers, & Smartboards**
- **Mixer/amplifier, Document Camera, & DVD**
- **High speed Internet-WiFi, Wireless network, Printers, and Computers**
- **VOIP Telephones and PA**



Samohi Projects-Unallocated Additional Scope

Campus Wide Transformer
 Campus Wide Electrical Pathway
 Tennis Court Retaining Wall
 New ADA Olympic Path of Travel
 Parking Rental Impacts
 Assistant DSA Inspection, Specialty Inspection
 Reduced Work Hours, Traffic Logistics
 Multiple Mobilizations, Redesign to Preserve Science
 Move Management, DSA Legacy Closeout, Additional Signage
 Classroom Technology FF&E
 Environmental supplemental work



Data 7/1/14

Budget:

Total Project Allocation Budget	Expenditures	Forecast to Complete the Project	Allowance: Unknown CO, Claims & Disputes	Remaining balance
\$80,548,384.00	\$65,936,289.00	\$14,612,093.00	\$0.00	
** Project Budget was reduced by \$6,031,079.00 for reduction of the program budget			(\$7,900,000.00 in alleged claims not filed yet)	

Schedule:

	2008	2009	2010	2011	2012	2013	2014	2015	2016
Original	Documents		DSA	41 months					
Current	Documents		DSA	Construction 58 months					

Olympic High School

Data 7/1/14

Allocation/Budget:	\$ 8,716,230.00
Design & Planning:	\$ 1,534,516.00
Construction & Management:	\$ 6,622,932.00
Program Cost:	\$ 558,782.00

Demolition Relocatables: Complete April 2009

Removed 5 Relocatables

Landscape: Complete August 2010

Recapturing Green Space for New Turf Field & New Trees

Technology- Completed December 2011

\$10.8m in Technology upgrades throughout the District to improve Local Area Network, fiber optic pathways, and communication; Classroom upgrades include:

- **LCD Projectors, Speakers, & Smartboards**
- **Mixer/amplifier, Document Camera, & DVD**
- **High speed Internet-WiFi, Wireless network, Printers, and Computers**
- **VOIP Telephones and PA**

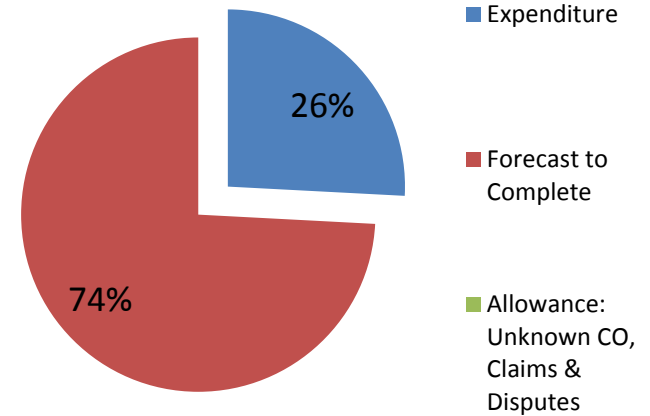
Modernization: Fire Alarm Portion commencing August 2014

15 rooms, Including 7 Classrooms, New Music Classroom Modernize Library, Computer Lab, & Science Room; Fire Alarm; DSA addendums



Olympic Unallocated/Additional Scope:

DSA Legacy Closeout
 Classroom Technology FF&E
 Environmental Supplemental Work



Budget:

Data 7/1/14

Total Project Allocation Budget	Expenditures	Forecast to Complete the Project	Allowance: Unknown CO, Claims & Disputes	Remaining balance
\$8,716,230.00	\$2,251,714.00	\$6,464,516.00	\$0.00	\$0.00
** Project Budget was reduced by \$436,869.00 for reduction of the program budget				

Schedule:

	2008	2009	2010	2011	2012	2013	2014	2015	2016	2017
Original	14 months		10 months							
Current	30 months		DSA					18 months		

<u>Allocation/Budget:</u>	\$ 50,220,160.00
Design & Planning:	\$ 15,037,563.00
Construction & Management:	\$ 36,694,816.00
Program Cost:	\$ 3,550,706.00

Phase 1 Fire Alarm: Complete March 2013

Campus Wide Fire Alarm Upgrade

Phase 2 Water Main: Complete March 2013

Water District 29 Fire flow capacity main upgraded and replaced

Phase 3 Soil Remediation: Complete August 2011

Soil removal as required by the Soil Removal Action Work plan of 2009

Phase 4 Modernization/New Construction Pending Coastal Commission

New library, 2 Computer labs, 3 Science labs 4 General classrooms, Add 2 classroom and Modernize 10 classrooms in Building E, and a new IT room.



Technology- Completed December 2011

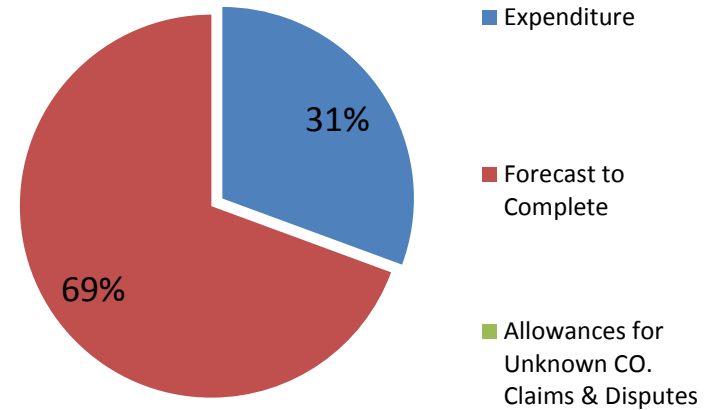
\$10.8m in Technology upgrades throughout the District to improve Local Area Network, fiber optic pathways, and communication;

Classroom upgrades include:

- **LCD Projectors, Speakers, & Smartboards**
- **Mixer/amplifier, Document Camera, & DVD**
- **High speed Internet-WiFi, Wireless network, Printers, and Computers**
- **VOIP Telephones and PA**

Malibu Unallocated/Additional Scope :

DSA Legacy closeout
 Classroom technology FF&E
 Environmental supplemental work



Data 7/1/14

Budget:

Total Project Allocation Budget	Expenditures	Forecast to Complete the Project	Allowance: Unknown CO, Claims & Disputes	Remaining balance
\$50,220,160.00 ** Project Budget was reduced by \$3,275,414.00 for reduction of the program budget	\$15,037,563.00	\$34,080,017.00	\$0.00	

Schedule:

	2008	2009	2010	2011	2012	2013	2014	2015	2016	2017	2018
Original	[Green]		[Red]		[Blue] 4 Phases						
Current	[Green] 30 months			[Red] DSA & Coastal Commission				[Blue] 38 months – 4 th Phase			