
ENERGY EXPENDITURE PLAN



John Muir Elementary School

2526 6th Street

Santa Monica, CA 90405

P: (310) 399-7721

PREPARED FOR:

California Energy Commission
Energy Division
Local Assistance and Financing Office, MS-23
1516 Ninth Street
Sacramento, Ca 95814



PREPARED ON:
5/17/2017

Table of Contents

Section 1: Facility Background.....	3
John Muir Elementary School.....	3
Utility Costs and Rate Schedules	4
Benchmarking.....	5
Section 2: Energy Efficiency Measures (EEM) Summary.....	6
Lighting Systems Retrofit.....	7
Appendix – A.....	8
School Schedules and Maps	8
Daily Bell Schedule and Academic Calendar	9
John Muir Elementary School Map	11
Appendix – B.....	12
Energy Utilization Analysis	12
Appendix – C	15
Lighting Systems Audit.....	15

Section 1: Facility Background

John Muir Elementary School

John Muir Elementary School is located at 2526 6th Street in Santa Monica, CA 90405. It is an elementary school serving approximately 265 students ranging from grades K-5 and provides instruction using 5 permanent buildings and 6 portable buildings. The total amount of occupied space is 50,995 SF. For a complete map of the campus, see Appendix A.

The campus operates on an academic calendar that begins in late August and ends in late June. Winter Break is a two week break that begins at the end of December and goes to the first week of January. Spring Break is a one week break that begins in early-April. School is in session beginning at 8:15 a.m. and continuing until 2:35 p.m., Monday through Friday. For a complete academic calendar and bell schedule, refer to Appendix A.



Utility Costs and Rate Schedules

The John Muir Elementary School facilities receive electricity services from Southern California Edison (SCE) and gas services from SoCalGas (SCG). Monthly utility data is considered separately for each utility meter and each energy type (electricity, natural gas, propane, diesel, and water).

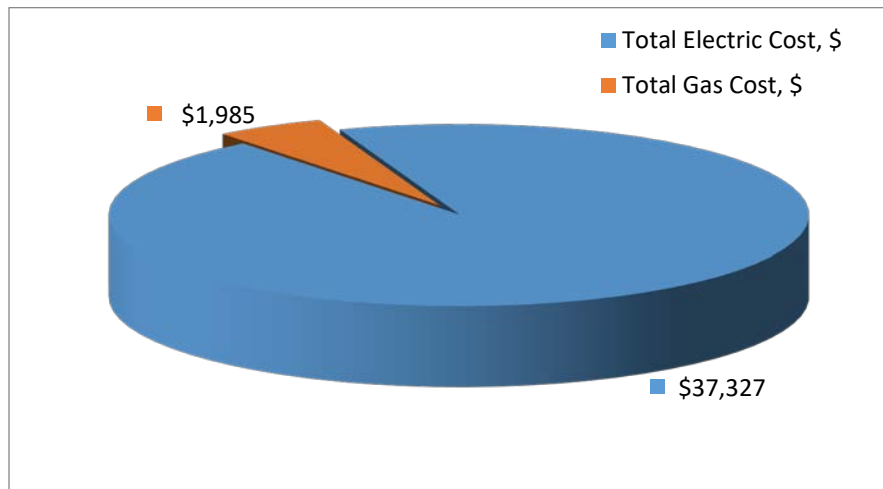
The following is a list of the meters associated with each energy type utilized at John Muir Elementary School:

Table 1: Electric Meter Numbers and Rate Schedules		
Account Number	Meter Number	Rate Schedule
3-012-2247-21	259000-023800	TOU-GS-2-B

Table 2: Gas or Propane Meter Numbers and Rate Schedules		
Account Number	Meter Number	Rate Schedule
1532983611	13265315	GN-10

Also located on site is a 9 kW photovoltaic array, installed in 2013, that produced 12,734 kWh from July, 2015 to June, 2016.

The utility data provided uses the data recovered from each of these meters during the period of July, 2015 to June, 2016. The cost comparison of John Muir Elementary School’s gas and electricity costs can be seen in the table below:



Benchmarking

As part of the site evaluation we determined the Energy Utilization Analysis (EUA) to provide important information about the energy usage of the school. Listed in the table below is the Benchmarking Report for John Muir Elementary School:

Energy Use Intensity Calculator					
Electricity		Natural Gas		Other Fuels	
1.39	<i>W/SF</i>	0.04	<i>Therms/SF</i>	0.00	<i>Gals/SF</i>
4.64	<i>kWh/SF</i>	\$ 0.04	<i>Cost/SF</i>	\$ 0.00	<i>Cost/SF</i>
\$ 0.73	<i>Cost/SF</i>				
Energy Costs/SF/Year		\$ 0.77	Energy Use(Kbtu)/SF/Year		53.38

The main purpose of this report is to assess the current energy usage of John Muir Elementary School. Energy consumption is analyzed compared to the site's actual weather data expressed in Cooling Degree Days (CDD) & Heating Degree Days (HDD). Graphs comparing the energy consumption to the CDD and HDD can be found in Appendix B.

The Baseline Energy Utilization Analysis (EUA) report compiles the monthly energy data from all meters on site. The EUA is useful in identifying critical energy consuming benchmarks like kWh/SF, kBtu/SF, and Cost/SF for each fuel type and individual school site. This report is a great resource to have for identifying the lowest energy performing schools. The report ranking will present the schools that consume the most energy when compared to others within the district or other comparable districts. The considered school is rated at 4.64 kWh/SF/yr.

The baseline EUA summary of all the meters for John Muir Elementary School can be found in Appendix B.

Section 2: Energy Efficiency Measures (EEM) Summary

Energy savings are based on the difference between annual energy use under existing conditions and annual energy use under proposed conditions. These annual energy savings, and the corresponding annual energy cost savings, are used to determine the cost-effectiveness of the projects. Demand savings are calculated as the different between the electricity demand of the existing equipment and electricity demand of proposed equipment. The table below shows the Energy Efficiency Measures proposed and the corresponding savings associated with them.

EEM Number	Energy Efficiency Measure	Demand Savings (kW)	Electricity Savings (kWH/yr)	Natural Gas or Fuel Savings (therms or gal/yr)	Annual Cost Savings (\$)	Rebates and Grants (\$)	Installed Measure Cost (\$)
Lighting	Lighting – Interior Fixture Retrofit	24	43,889		\$7,329.00	\$65,000.00	\$127,331.00
Lighting	Lighting – Exterior Fixture Retrofit	4	15,279		\$2,552.00	\$10,000.00	\$41,360.00
	Totals	28	59,168		\$9,881.00	\$75,000.00	\$168,691.00

Lighting Systems Retrofit

A significant portion of a facilities electrical costs comes from lighting, making lighting retrofits one of the quickest and simplest methods for reducing utility costs. In most cases the retrofits will result in improved light quality and reduced maintenance costs in addition to the estimated energy savings.

The method used for calculating energy savings is outlined below:

$$\text{Annual Saving, } \$ = (\text{Existing Watts} - \text{New Watts}) / 1000 \times \text{Hours/Year} \times \text{Utility Rate} \times N$$

Where,

- Existing Watts* – Wattage rating for the existing (Baseline) light fixture
- New Watts* – New wattage rating for the existing light fixture
- Hours/Year* – Annual number of “burn-hours” (run hours for different areas; see detailed audit in Appendix C)
- Utility Rate* – Actual weighted composite utility rate, \$/kWh
- N* – Number of light fixtures of the particular type (see below & in Appendix C for the actual quantities).

The current interior lighting systems in the John Muir Elementary School buildings consist of a combination of 1st generation T-8, metal halide and compact fluorescent lamps and fixtures. Following examination of the data collected, a full retrofit of the lighting system with LED lamps and fixtures is recommended.

The current exterior lighting systems in the John Muir Elementary School buildings consist of compact fluorescent, 1st generation T-8, metal halide, and high pressure sodium lamps and fixtures. Following examination of the data collected, a full retrofit of the lighting system with LED lamps and fixtures is recommended.

This retrofit will generate more saving, electrical demand reduction and better payback than other Energy Conservation Measures such as HVAC replacements. Upon installment of the new system, the campus will conserve 28.2405 kW and 59,168 kWh per year. The cost savings per year will be approximately \$9,881.03. A full detailed audit of the current lighting system implemented in the entire campus can be found in Appendix C.

Appendix – A

School Schedules and Maps

Daily Bell Schedule and Academic Calendar

**The John Muir office is open from 8:00 a.m. to 4:00 p.m.,
Monday – Friday. Please be on time for the morning bell!**

Arrival

8:15 a.m. School Begins

Recess

9:45 - 10:00 a.m. Primary Recess (K-2)
10:00 - 10:15 a.m. Upper Grade Recess (3-5)

Lunchtime

11:35 a.m. - 12:20 p.m. 1st and 2nd grades
Recess followed by Lunch at 11:55 a.m.
11:50 a.m. - 12:35 p.m. Kindergarten; Lunch followed by Recess
12:00 p.m. - 12:45 p.m. 3rd - 5th Recess/Lunch (12:17 bell)

Dismissal

(Early dismissal on Fridays for grades 1-5)
Kindergarten Mon-Fri 1:25 p.m.
1st - 3rd grades Mon. - Thur. 2:35 p.m.
Friday 1:30 p.m.
4th & 5th grade Mon. - Thur. 2:50 p.m.
Friday 1:30 p.m.

Minimum Days Dismissal

Kindergarten 12:25 p.m.
Grades 1 - 5 1:10 p.m.
8/22 - First day of classes
8/23 - K only
8/30 - Back to School
9/6 - Back to School
11/7 to 10 - Conferences
11/23 - Thanksgiving Early Dismissal
5/25 - Open House
6/9 - End of School

SANTA MONICA-MALIBU UNIFIED SCHOOL DISTRICT
2016-2017 District Calendar

Approved by the Board of Education: 3/19/15

July 2016					August 2016					September 2016				
M	T	W	Th	F	M	T	W	Th	F	M	T	W	Th	F
4	5	6	7	8	1	2	3	4	5	5	6	7	8	9
11	12	13	14	15	8	9	10	11	12	12	13	14	15	16
18	19	20	21	22	15	16	17	18	19	19	20	21	22	23
25	26	27	28	29	22	23	24	25	26	26	27	28	29	30

October 2016					November 2016					December 2016				
M	T	W	Th	F	M	T	W	Th	F	M	T	W	Th	F
4	5	6	7	8	1	2	3	4	5	5	6	7	8	9
10	11	12	13	14	7	8	9	10	11	12	13	14	15	16
17	18	19	20	21	14	15	16	17	18	19	20	21	22	23
24	25	26	27	28	21	22	23	24	25	26	27	28	29	30
31					28	29	30							

January 2017					February 2017					March 2017				
M	T	W	Th	F	M	T	W	Th	F	M	T	W	Th	F
2	3	4	5	6	1	2	3	4	5	1	2	3	4	5
10	11	12	13	14	6	7	8	9	10	6	7	8	9	10
15	16	17	18	19	13	14	15	16	17	13	14	15	16	17
23	24	25	26	27	20	21	22	23	24	20	21	22	23	24
30	31				27	28	29	30	31	27	28	29	30	31

April 2017					May 2017					June 2017				
M	T	W	Th	F	M	T	W	Th	F	M	T	W	Th	F
3	4	5	6	7	1	2	3	4	5	5	6	7	8	9
10	11	12	13	14	8	9	10	11	12	12	13	14	15	16
17	18	19	20	21	15	16	17	18	19	19	20	21	22	23
24	25	26	27	28	22	23	24	25	26	26	27	28	29	30
					29	30	31							

- Legend:**
- = First/Last Day of School
 - = Legal Holiday
 - = Local Holiday (schools/offices closed)
 - = School Recess (classes not in session)
 - = Pupil Free Day (no school for students)
 - = Elem. Pupil Free Day (no school -elem students)
 - = Sec. Pupil Free Day (no school -sec students)
 - = Minimum Day for all students
 - = Certificated Staff Development Days



- Employee Work Dates:**
- Sept. 1, 2016-June 30, 2017: * Classified 11-Month *must work 22 days in July/August, 2016
 - Aug. 8, 2016-June 21, 2017: Classified 10+10
 - Aug. 15, 2016-June 14, 2017: Classified 10-Month
 - Aug. 17, 2016-June 9, 2017: Certificated/184 Days
 - Aug. 18, 2016-June 9, 2017: Certif. CDS/183 Days
 - Aug. 19, 2016-June 9, 2017: Classified School Year
- Teacher Work Days: 184**
Student Days: 180
- 1st Semester: Aug. 22 - Dec. 23 (84 days)
 2nd Semester: Jan. 10 - June 9 (96 days)

First Day of Instruction:
 - Monday, August 22, 2016

Last Day of Instruction:
 - Friday, June 9, 2017

Certificated Staff Development Days:
 (No Students)
 - Wednesday, August 17, 2016
 - Thursday, August 18, 2016

HOLIDAYS:
 July 4: 4th of July Holiday
 Sept. 5: Labor Day Holiday
 Oct 3: Local Holiday
 Oct 12: Local Holiday
 Nov. 11: Veteran's Day Holiday
 Nov. 24: Thanksgiving Holiday
 Nov. 25: Legal Holiday (Admission Day observed)
 Dec. 26, 27: Winter Holidays
 Dec. 30, Jan 2: New Years Holidays
 Jan 16: Martin Luther King Jr. Holiday
 Feb. 20: Presidents' Day Holiday
 Apr. 7: Local Holiday
 Apr. 14: Legal Holiday (Lincoln's Birthday observed)
 May 29: Memorial Day Holiday

SCHOOL RECESSES:
 Dec. 26 - Jan 6: Winter Recess
 Apr 3 - Apr 14: Spring Recess

PUPIL-FREE DAYS:
 Aug. 17: All Students
 Aug. 18: All Students
 Aug. 19: All Students
 Nov. 4: Elementary Students Only
 Jan. 9: Secondary Students Only

MINIMUM DAYS:
 TK/Kindergarten: Aug. 22, Aug. 23, 30, Nov. 7, 8, 9, 10, 23, Dec. 23, May 25, June 9
 Elementary: Aug. 22, 30, Sept. 6, Nov. 7, 8, 9, 10, 23, Dec. 23, May 25, June 9
 Santa Monica Middle Schools: Sept. 8, Nov. 23, Dec. 23, Mar. 31, Apr. 27, June 8, June 9, +1 discretionary
 Malibu MS/HS: Sept. 8, 15, Nov. 23, Dec. 21, 22, 23, March 9, June 6, 7, 8 + 1 discretionary
 Samohi: Sept. 15, Dec. 20, 21, 22, 23, Mar. 9, June 5, 6, 7, 8
 Olympic HS: Sept. 20, Nov. 23, Dec. 23, May 2, June 1, 2, 5, 6, 7, 8, 9

Back to School Nights:
 Tues. Aug. 30 - Elem TK-2
 Tues. Sept. 6 - Elem 3-5
 Thurs. Sept. 8 - Middle School
 Thurs. Sept. 15 - High School
 Tues. Sept. 20 - Olympic HS

Open House Nights:
 Thurs. May 25 - Elementary
 Thurs. April 27 - SM Middle Schools
 Thurs. March 9 - Malibu MS/HS and Samohi
 Tues. May 2 - Olympic HS

Promotions/Graduations:
 Wed. June 7 - Elementary
 Fri. June 9 - Middle School
 Thurs. June 8 - MMS 2:00 pm
 Thurs. June 8 - Samohi 5:30 pm
 Wed. May 31 - Olympic HS 5:30 pm

Parent Conference Days (TK-5):
 Nov. 4 - Nov. 10, 2016

Testing Dates: *expected, not confirmed*
 AP Testing: May 1- May 12, 2017
 STAR: April 20 - May 18, 2017
 SBAC: April 20 - May 29, 2017

TK/Kindergarten Roundup:
 Jan. 30 - Feb. 10, 2017

Final Exams:
 Malibu MS/HS: Dec. 21-23, 2016
 June 6-8, 2017
 Samohi: Dec. 20-23, 2016
 June 5-8, 2017

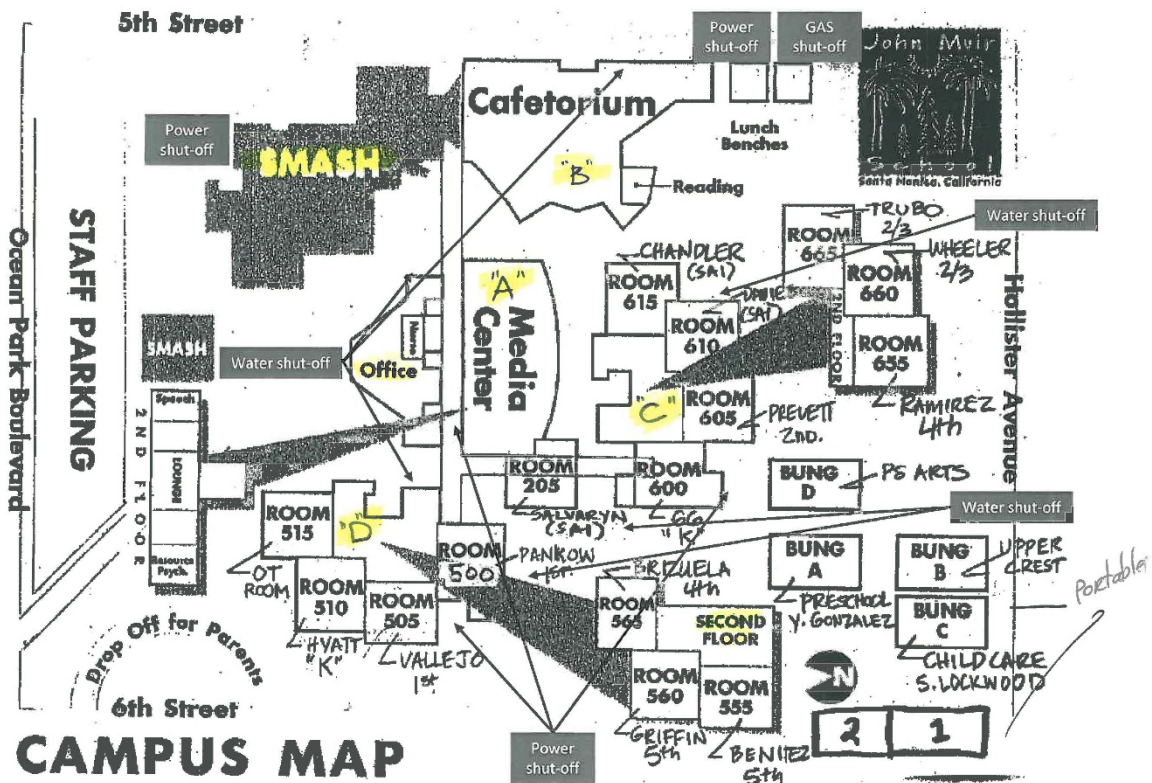
Summer School:
 ISS: June 19-July 14, 2017
 Credit Recovery: June 19-Jul 21, 2017
 ESY: June 19-July 14, 2017

TK-5 Grading Periods:
 Conference: Nov. 4, 2016
 Winter Grading: Feb. 10, 2017
 Spring Grading: June 9, 2017

6-12 Grading Periods:
 Aug. 22 - Sept. 30, 2016
 Oct. 4 - Nov. 10, 2016
 Nov. 14 - Dec. 23, 2016
 Jan. 9 - Feb. 24, 2017
 Feb. 27 - April 28, 2017
 May 1 - June 9, 2017

Revised 3/5/15

John Muir Elementary School Map



Appendix – B

Energy Utilization Analysis

Customer Name: **Santa Monica-Malibu USD**

Facility Name: **John Muir Elementary and Alternate**

Elec Utility Name: **SCE** Natural Gas Utility Name: **SCG**

Facility Location: **2526 Sixth Street, Santa Monica, CA**
 Sq. Ft. (conditioned space): **50,995**

Billing Period
 FROM: **Jul-15**
 TO: **Jun-16**

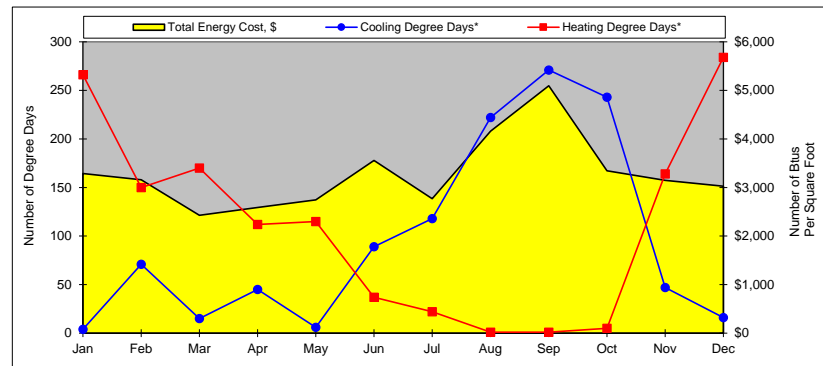
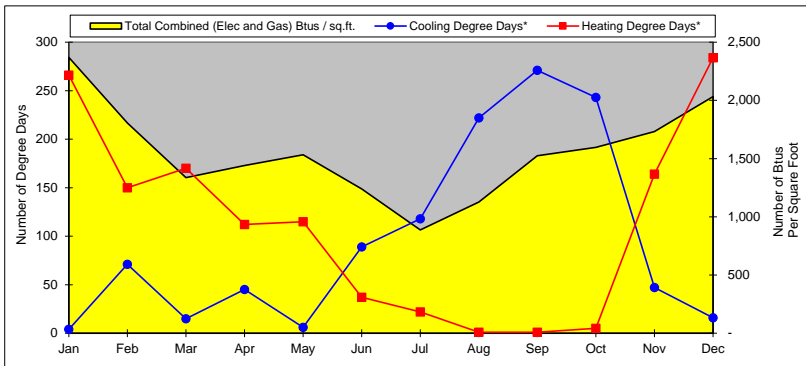
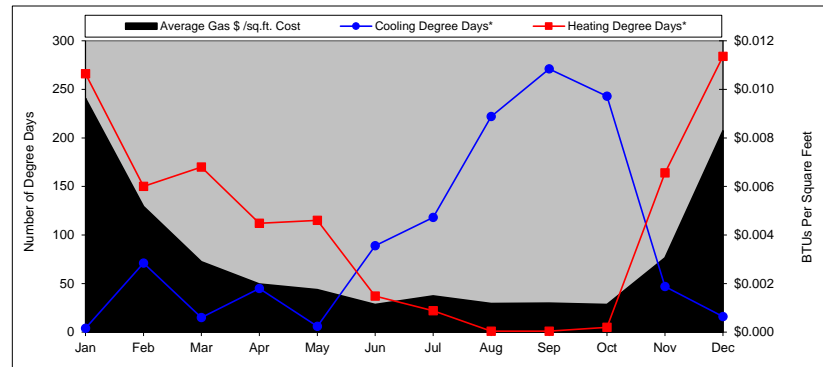
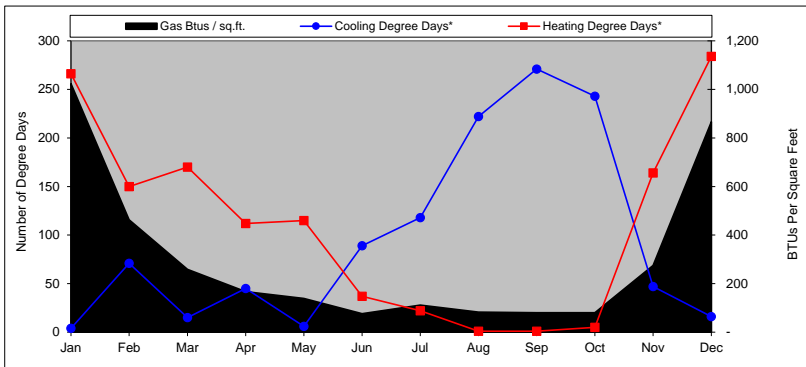
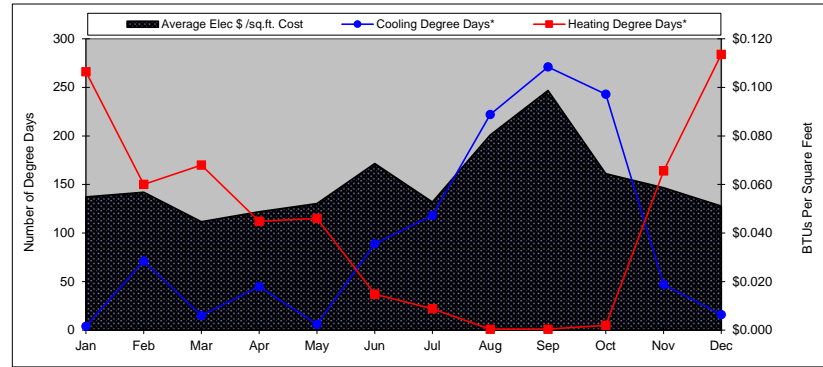
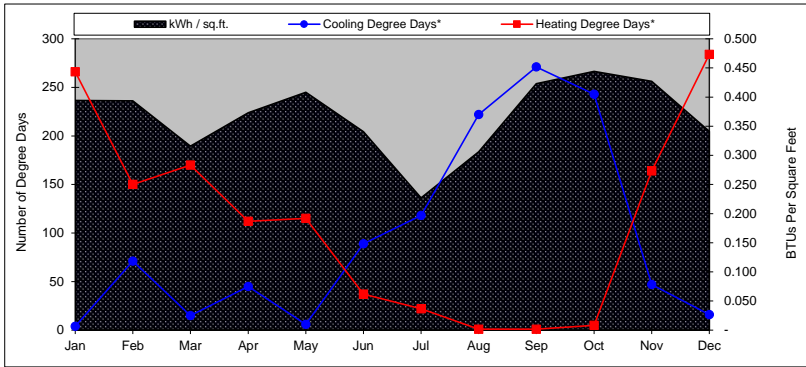
SCE			SCG		
Account #	Meter #	Rate Schedule	Account #	Meter #	Rate Schedule
2-35-584-5629	259000-023800	TOU-GS-2-B	6307342052	13265315	GN-10-NON-RESIDENTIAL
0	0	0	0	0	0
0	0	0	0	0	0
0	0	0	0	0	0

	Jan	Feb	Mar	Apr	May	Jun	Jul	Aug	Sep	Oct	Nov	Dec	TOTAL ANNUAL (Purchased from SCE)	TOTAL ANNUAL (Purchased from SCE and Solar Production)
Cooling Degree Days*	4	71	15	45	6	89	118	222	271	243	47	16	1,147	
Heating Degree Days*	266	150	170	112	115	37	22	1	1	5	164	284	1,327	
Days in Billing Period														
electric	32	30	30	31	30	29	30	31	30	30	33	29	365	
natural gas	31	32	29	29	31	30	30	29	32	28	30	34	365	
Electric Usage														
kWh per Billing Cycle	20,102	20,066	16,104	19,029	20,813	17,367	11,575	15,610	21,565	22,646	21,770	17,405	224,052	236,786
\$ for kWh Billed	\$2,798	\$2,896	\$2,279	\$2,486	\$2,657	\$3,500	\$2,692	\$4,100	\$5,034	\$3,288	\$2,992	\$2,605	\$37,327	
Max kW Billed	80	86	64	64	67	70	42	70	80	83	74	74	71	
\$ for kW Billed	\$0	\$0	\$0	\$0	\$0	\$0	\$0	\$0	\$0	\$0	\$0	\$0	\$0	
Total Electric Cost, \$	\$2,798	\$2,896	\$2,279	\$2,486	\$2,657	\$3,500	\$2,692	\$4,100	\$5,034	\$3,288	\$2,992	\$2,605	\$37,327	
Ave. Daily Electric Cost, \$	\$87	\$97	\$76	\$80	\$89	\$121	\$90	\$132	\$168	\$110	\$91	\$90	\$102	
Average \$/kWh Cost	\$0.139	\$0.144	\$0.142	\$0.131	\$0.128	\$0.202	\$0.233	\$0.263	\$0.233	\$0.145	\$0.137	\$0.150	\$0.167	
Average Elec \$ /sq.ft. Cost	\$0.055	\$0.057	\$0.045	\$0.049	\$0.052	\$0.069	\$0.053	\$0.080	\$0.099	\$0.064	\$0.059	\$0.051	\$0.732	
kWh / sq.ft.	0.394	0.393	0.316	0.373	0.408	0.341	0.227	0.306	0.423	0.444	0.427	0.341	4.39	4.64
Natural Gas Usage														
Therms per Billing Cycle	522	236	132	85	71	39	57	42	41	41	140	442	1,848	
Total Gas Cost, \$	\$491	\$264	\$148	\$101	\$89	\$58	\$76	\$60	\$61	\$58	\$156	\$423	\$1,985	
Ave. Daily Gas Cost, \$	\$16	\$8	\$5	\$3	\$3	\$2	\$3	\$2	\$2	\$2	\$5	\$12	\$5	
Average \$/therm Cost	\$0.941	\$1.119	\$1.121	\$1.188	\$1.254	\$1.487	\$1.333	\$1.429	\$1.488	\$1.415	\$1.114	\$0.957	\$1.074	
Average Gas \$ /sq.ft. Cost	\$0.010	\$0.005	\$0.003	\$0.002	\$0.002	\$0.001	\$0.001	\$0.001	\$0.001	\$0.001	\$0.003	\$0.008	\$0.039	
Gas Btus / sq.ft.	1,024	463	259	167	139	76	112	82	80	80	275	867	3,624	
Total Energy Usage														
Combined (Elec and Gas) Btus / sq.ft.	2,369	1,806	1,337	1,440	1,532	1,239	886	1,127	1,524	1,596	1,732	2,032	18,619	
Total Energy Cost, \$	\$3,289	\$3,160	\$2,427	\$2,587	\$2,746	\$3,558	\$2,768	\$4,160	\$5,095	\$3,346	\$3,148	\$3,028	\$39,312	
Ave. Energy \$/sq.ft./period	\$0.06	\$0.06	\$0.05	\$0.05	\$0.05	\$0.07	\$0.05	\$0.08	\$0.10	\$0.07	\$0.06	\$0.06	\$0.77	

* Notes:
 1) Heating degree days and cooling degree days are based on 65 F.
 2) Heating degree days and cooling degree days are based on Santa Monica weather data.

Customer: Santa Monica-Malibu USD
Building: John Muir Elementary and Alternate

Energy Used from: Jul-15
to: Jun-16



Appendix – C

Lighting Systems Audit



School Distric Santa Monica-Malibu USD - LED Option
 Address: 0
 0
 School: JOHN MUIR ELEMENTARY
 School Adre 2526 6TH ST.
 0

cost per kwh 0.167

LED Option

61.00 32.76 124,198.43 65,030.62 59,167.82 \$ 9,881.03

ORIGINAL AUDIT ID#	INTERIOR/EXTERIOR	SCHOOL DISTRICT	SCHOOL	ROOM	LIGHTING CODE (EXISTING)	ECM	PROPOSED FIXT	EXIST WATT	PROP WATT	EXIST OPER HRS	PROP OPER HRS	EXISTING KW	PROPOSED KW	EXISTING KWH	PROPOSED KWH	SAVED KWH	ANN SAVINGS
1844	INTERIOR	NTA MONICA-MALIBU	JOHN MUIR ELEMENTARY 2526 6TH	ADMINISTRATION	T8-4'-32W-4L-EB/ISN-I/O-X	(LED)4L 12T8/4F/850/DIR, 97740 (2) QHE2X32UNV/ISN	4	118	64	2185	2185	0.472	0.256	1031.32	559.36	471.96	\$ 78.82
1845	INTERIOR	NTA MONICA-MALIBU	JOHN MUIR ELEMENTARY 2526 6TH	ADMINISTRATION	T8-4'-32W-3L-EB/ISN-X-X	(LED)3L 12T8/4F/850/DIR, 97740 (1) QHE3X32UNV/ISN	8	87	48	2185	2185	0.696	0.384	1520.76	839.04	681.72	\$ 113.85
1846	INTERIOR	NTA MONICA-MALIBU	JOHN MUIR ELEMENTARY 2526 6TH	ADMINISTRATION	T8-4'-32W-2L-EB/ISN-X-X	(LED)2L 12T8/4F/850/DIR, 97740 (1) QHE2X32UNV/ISN	1	59	32	2185	2185	0.059	0.032	128.915	69.92	58.995	\$ 9.85
1847	INTERIOR	NTA MONICA-MALIBU	JOHN MUIR ELEMENTARY 2526 6TH	ADMINISTRATION	T8-4'-32W-2L-EB/ISN-X-X	(LED)2L 12T8/4F/850/DIR, 97740 (1) QHE2X32UNV/ISN	2	59	32	2185	2185	0.118	0.064	257.83	139.84	117.99	\$ 19.70
1848	EXTERIOR	NTA MONICA-MALIBU	JOHN MUIR ELEMENTARY 2526 6TH	100 BLDN EXTER	CF/4P-DOUB-26W-2L-EB-X-X	(LED)2L 18.5W 4 PIN LED19GX24q-H/840 HORIZONTAL (R	2	51	37	3650	3650	0.102	0.074	372.3	270.1	102.2	\$ 17.07
1849	INTERIOR	NTA MONICA-MALIBU	JOHN MUIR ELEMENTARY 2526 6TH		106 T8-4'-32W-2L-EB/ISN-X-X	(LED)2L 12T8/4F/850/DIR, 97740 (1) QHE2X32UNV/ISN	1	59	32	1816	1816	0.059	0.032	107.144	58.112	49.032	\$ 8.19
1850	INTERIOR	NTA MONICA-MALIBU	JOHN MUIR ELEMENTARY 2526 6TH		102 T8-4'-32W-2L-EB/ISN-X-X	(LED)2L 12T8/4F/850/DIR, 97740 (1) QHE2X32UNV/ISN	1	59	32	1816	1816	0.059	0.032	107.144	58.112	49.032	\$ 8.19
1851	INTERIOR	NTA MONICA-MALIBU	JOHN MUIR ELEMENTARY 2526 6TH		410 T8-4'-32W-4L-EB/ISN-I/O-X	(LED)4L 12T8/4F/850/DIR, 97740 (2) QHE2X32UNV/ISN	10	118	64	1816	1816	1.18	0.64	2142.88	1162.24	980.64	\$ 163.77
1852	INTERIOR	NTA MONICA-MALIBU	JOHN MUIR ELEMENTARY 2526 6TH	WORKROOM	T8-4'-32W-3L-EB/ISN-X-X	(LED)3L 12T8/4F/850/DIR, 97740 (1) QHE3X32UNV/ISN	2	87	48	1816	1816	0.174	0.096	315.984	174.336	141.648	\$ 23.66
1853	INTERIOR	NTA MONICA-MALIBU	JOHN MUIR ELEMENTARY 2526 6TH		410 T8-4'-32W-4L-EB/ISN-I/O-X	(LED)4L 12T8/4F/850/DIR, 97740 (2) QHE2X32UNV/ISN	10	118	64	1816	1816	1.18	0.64	2142.88	1162.24	980.64	\$ 163.77
1854	INTERIOR	NTA MONICA-MALIBU	JOHN MUIR ELEMENTARY 2526 6TH		415 T8-4'-32W-4L-EB/ISN-I/O-X	(LED)4L 12T8/4F/850/DIR, 97740 (2) QHE2X32UNV/ISN	10	118	64	1816	1816	1.18	0.64	2142.88	1162.24	980.64	\$ 163.77
1855	INTERIOR	NTA MONICA-MALIBU	JOHN MUIR ELEMENTARY 2526 6TH	WORKROOM	T8-4'-32W-2L-EB/ISN-X-X	(LED)2L 12T8/4F/850/DIR, 97740 (1) QHE2X32UNV/ISN	4	59	32	1816	1816	0.236	0.128	428.576	232.448	196.128	\$ 32.75
1856	INTERIOR	NTA MONICA-MALIBU	JOHN MUIR ELEMENTARY 2526 6TH	WORKROOM	CF/4P-DOUB-26W-2L-EB-X-X	(LED)2L 18.5W 4 PIN LED19GX24q-H/840 HORIZONTAL (R	6	51	37	3650	3650	0.222	0.152	555.696	403.152	152.544	\$ 25.47
1857	INTERIOR	NTA MONICA-MALIBU	JOHN MUIR ELEMENTARY 2526 6TH	WORKROOM	MH-MED-100W-1L-CWA-X-X	(LED) LRT8-45-40-X-G3 w/ LRT800-P-W-X, **NEED TO KN	2	128	45	1816	1816	0.256	0.09	464.896	163.44	301.456	\$ 50.34
1858	INTERIOR	NTA MONICA-MALIBU	JOHN MUIR ELEMENTARY 2526 6TH	RESTROOMS	T8-4'-32W-2L-EB/ISN-X-X	(LED)2L 12T8/4F/850/DIR, 97740 (1) QHE2X32UNV/ISN	2	59	32	1816	1816	0.118	0.064	214.288	116.224	98.064	\$ 16.38
1859	INTERIOR	NTA MONICA-MALIBU	JOHN MUIR ELEMENTARY 2526 6TH	RESTROOMS	CF/4P-DOUB-26W-2L-EB-X-X	(LED)2L 18.5W 4 PIN LED19GX24q-H/840 HORIZONTAL (R	4	51	37	3650	3650	0.204	0.148	370.464	268.768	101.696	\$ 16.98
1860	INTERIOR	NTA MONICA-MALIBU	JOHN MUIR ELEMENTARY 2526 6TH	CUSTODIAN	T8-4'-32W-2L-EB/ISN-X-X	(LED)2L 12T8/4F/850/DIR, 97740 (1) QHE2X32UNV/ISN	1	59	32	400	400	0.059	0.032	23.6	12.8	10.8	\$ 1.80
1861	INTERIOR	NTA MONICA-MALIBU	JOHN MUIR ELEMENTARY 2526 6TH		416 T8-4'-32W-2L-EB/ISN-X-X	(LED)2L 12T8/4F/850/DIR, 97740 (1) QHE2X32UNV/ISN	1	59	32	1816	1816	0.059	0.032	107.144	58.112	49.032	\$ 8.19
1862	INTERIOR	NTA MONICA-MALIBU	JOHN MUIR ELEMENTARY 2526 6TH		425 T8-4'-32W-4L-EB/ISN-I/O-X	(LED)4L 12T8/4F/850/DIR, 97740 (2) QHE2X32UNV/ISN	11	118	64	1816	1816	1.298	0.704	2357.168	1278.464	1078.704	\$ 180.14
1863	INTERIOR	NTA MONICA-MALIBU	JOHN MUIR ELEMENTARY 2526 6TH		425 T8-4'-32W-2L-EB/ISN-I/O-X	(LED)2L 12T8/4F/850/DIR, 97740 (1) QHE1X32UNV/ISN AN	1	59	32	1816	1816	0.059	0.032	107.144	58.112	49.032	\$ 8.19
1864	INTERIOR	NTA MONICA-MALIBU	JOHN MUIR ELEMENTARY 2526 6TH		440 T8-4'-32W-4L-EB/ISN-I/O-X	(LED)4L 12T8/4F/850/DIR, 97740 (2) QHE2X32UNV/ISN	12	118	64	1816	1816	1.416	0.768	2571.456	1394.688	1176.768	\$ 196.52
1865	INTERIOR	NTA MONICA-MALIBU	JOHN MUIR ELEMENTARY 2526 6TH	MECHANICAL	T8-4'-32W-2L-EB/ISN-X-X	(LED)2L 12T8/4F/850/DIR, 97740 (1) QHE2X32UNV/ISN	2	59	32	400	400	0.118	0.064	47.2	25.6	21.6	\$ 3.61
1866	INTERIOR	NTA MONICA-MALIBU	JOHN MUIR ELEMENTARY 2526 6TH		405 T8-4'-32W-4L-EB/ISN-I/O-X	(LED)4L 12T8/4F/850/DIR, 97740 (2) QHE2X32UNV/ISN	10	118	64	1816	1816	1.18	0.64	2142.88	1162.24	980.64	\$ 163.77
1867	INTERIOR	NTA MONICA-MALIBU	JOHN MUIR ELEMENTARY 2526 6TH	WORKROOM	T8-4'-32W-3L-EB/ISN-X-X	(LED)3L 12T8/4F/850/DIR, 97740 (1) QHE3X32UNV/ISN	2	87	48	1816	1816	0.174	0.096	315.984	174.336	141.648	\$ 23.66
1868	INTERIOR	NTA MONICA-MALIBU	JOHN MUIR ELEMENTARY 2526 6TH		400 T8-4'-32W-4L-EB/ISN-I/O-X	(LED)4L 12T8/4F/850/DIR, 97740 (2) QHE2X32UNV/ISN	10	118	64	1816	1816	1.18	0.64	2142.88	1162.24	980.64	\$ 163.77
1869	INTERIOR	NTA MONICA-MALIBU	JOHN MUIR ELEMENTARY 2526 6TH	WORKROOM	CF/S-TWST-40W-1L-SELF-X	(LED) TERRALUX 26W TLK-DR8A-B-226-40-DO-0	3	44	26	1816	1816	0.132	0.0765	239.712	138.924	100.788	\$ 16.83
1870	INTERIOR	NTA MONICA-MALIBU	JOHN MUIR ELEMENTARY 2526 6TH	WORKROOM	MH-MED-100W-1L-CWA-X-X	(LED) LRT8-45-40-X-G3 w/ LRT800-P-W-X, **NEED TO KN	3	128	45	1816	1816	0.384	0.135	697.344	245.16	452.184	\$ 75.51
1871	INTERIOR	NTA MONICA-MALIBU	JOHN MUIR ELEMENTARY 2526 6TH		490 T8-4'-32W-4L-EB/ISN-I/O-X	(LED)4L 12T8/4F/850/DIR, 97740 (2) QHE2X32UNV/ISN	11	118	64	1816	1816	1.298	0.704	2357.168	1278.464	1078.704	\$ 180.14
1872	INTERIOR	NTA MONICA-MALIBU	JOHN MUIR ELEMENTARY 2526 6TH		490 T8-4'-32W-2L-EB/ISN-I/O-X	(LED)2L 12T8/4F/850/DIR, 97740 (1) QHE1X32UNV/ISN AN	1	59	32	1816	1816	0.059	0.032	107.144	58.112	49.032	\$ 8.19
1873	INTERIOR	NTA MONICA-MALIBU	JOHN MUIR ELEMENTARY 2526 6TH		480 T8-4'-32W-4L-EB/ISN-I/O-X	(LED)4L 12T8/4F/850/DIR, 97740 (2) QHE2X32UNV/ISN	11	118	64	1816	1816	1.298	0.704	2357.168	1278.464	1078.704	\$ 180.14
1874	INTERIOR	NTA MONICA-MALIBU	JOHN MUIR ELEMENTARY 2526 6TH		480 T8-4'-32W-2L-EB/ISN-I/O-X	(LED)2L 12T8/4F/850/DIR, 97740 (1) QHE1X32UNV/ISN AN	1	59	32	1816	1816	0.059	0.032	107.144	58.112	49.032	\$ 8.19
1875	INTERIOR	NTA MONICA-MALIBU	JOHN MUIR ELEMENTARY 2526 6TH		465 CF/4P-DOUB-26W-2L-EB-X-X	(LED)2L 18.5W 4 PIN LED19GX24q-H/840 HORIZONTAL (R	4	51	37	3650	3650	0.204	0.148	370.464	268.768	101.696	\$ 16.98
1876	INTERIOR	NTA MONICA-MALIBU	JOHN MUIR ELEMENTARY 2526 6TH		465 T8-4'-32W-3L-EB/ISN-X-X	(LED)3L 12T8/4F/850/DIR, 97740 (1) QHE3X32UNV/ISN	2	48	26	1816	1816	0.174	0.096	315.984	174.336	141.648	\$ 23.66
1877	INTERIOR	NTA MONICA-MALIBU	JOHN MUIR ELEMENTARY 2526 6TH	RESTROOMS	T8-4'-32W-2L-EB/ISN-X-X	(LED)2L 12T8/4F/850/DIR, 97740 (1) QHE2X32UNV/ISN	2	59	32	1816	1816	0.118	0.064	214.288	116.224	98.064	\$ 16.38
1878	INTERIOR	NTA MONICA-MALIBU	JOHN MUIR ELEMENTARY 2526 6TH		472 T8-4'-32W-2L-EB/ISN-X-X	(LED)2L 12T8/4F/850/DIR, 97740 (1) QHE2X32UNV/ISN	1	59	32	1816	1816	0.059	0.032	107.144	58.112	49.032	\$ 8.19
1879	INTERIOR	NTA MONICA-MALIBU	JOHN MUIR ELEMENTARY 2526 6TH		455 T8-4'-32W-4L-EB/ISN-I/O-X	(LED)4L 12T8/4F/850/DIR, 97740 (2) QHE2X32UNV/ISN	9	118	64	1816	1816	1.062	0.576	1928.592	1046.016	882.576	\$ 147.39
1880	EXTERIOR	NTA MONICA-MALIBU	JOHN MUIR ELEMENTARY 2526 6TH	400 EXTERIOR	CF/4P-TRIP-42W-1L-EB-X-X	(LED)NEW DECO MEDIUM WALLPACK D414-LED-30-50-U	2	46	25	3650	3650	0.092	0.05	335.8	182.5	153.3	\$ 25.60
1881	EXTERIOR	NTA MONICA-MALIBU	JOHN MUIR ELEMENTARY 2526 6TH	400 EXTERIOR	CF/2P-SING-13W-2L-MB-X-X	(LED)2L GREEN CREATIVE 2PIN LED DIRect or BYPass 5.	10	28	11	3650	3650	0.28	0.11	1022	401.5	620.5	\$ 103.62
1882	EXTERIOR	NTA MONICA-MALIBU	JOHN MUIR ELEMENTARY 2526 6TH	400 EXTERIOR	CF/S-TWST-27W-1L-SELF-X	(LED)1L GREEN CREATIVE LED A21 17W DIM, 17A21G4D	6	27	17	3650	3650	0.162	0.102	591.3	372.3	219	\$ 36.57
1883	EXTERIOR	NTA MONICA-MALIBU	JOHN MUIR ELEMENTARY 2526 6TH	400 EXTERIOR	LED/I-WP-20W-INT-DRIV-X-X	EXCLUDED/NO CHANGE	1	23	23	3650	3650	0.023	0.023	83.95	83.95	0	\$ -
1884	EXTERIOR	NTA MONICA-MALIBU	JOHN MUIR ELEMENTARY 2526 6TH	400 EXTERIOR	T8-4'-32W-2L-EB/ISN-X-X	(LED)2L 12T8/4F/850/DIR, 97740 (1) QHE2X32UNV/ISN	3	59	32	3650	3650	0.177	0.096	646.05	350.4	295.65	\$ 49.37
1885	EXTERIOR	NTA MONICA-MALIBU	JOHN MUIR ELEMENTARY 2526 6TH	400 EXTERIOR	CF/S-TWST-23W-1L-SELF-X	(LED)1L A19 8W 5000K E26, 455600	1	23	8	3650	3650	0.023	0.008	83.95	29.2	54.75	\$ 9.14
1886	EXTERIOR	NTA MONICA-MALIBU	JOHN MUIR ELEMENTARY 2526 6TH	400 EXTERIOR	MH-MED-100W-1L-CWA-X-X	(LED)NEW DECO 20W SMALL WALLPACK D400-LED-20-5	2	128	20	3650	3650	0.256	0.04	934.4	146	788.4	\$ 131.66
1887	EXTERIOR	NTA MONICA-MALIBU	JOHN MUIR ELEMENTARY 2526 6TH	400 EXTERIOR	CF/4P-DOUB-26W-2L-EB-X-X	(LED)2L 18.5W 4 PIN LED19GX24q-H/840 HORIZONTAL (R	2	51	37	3650	3650	0.102	0.074	372.3	270.1	102.2	\$ 17.07
1888	INTERIOR	NTA MONICA-MALIBU	JOHN MUIR ELEMENTARY 2526 6TH	252 WORKROOM	T8-4'-32W-2L-EB/ISN-X-X	(LED)2L 12T8/4F/850/DIR, 97740 (1) QHE2X32UNV/ISN	2	59	32	1816	1816	0.118	0.064	214.288	116.224	98.064	\$ 16.38
1889	INTERIOR	NTA MONICA-MALIBU	JOHN MUIR ELEMENTARY 2526 6TH	252 WORKROOM	T8-3'-25W-4L-EB/ISN-X-X	(LED)4L 10T8/3F/840/DIR (1) QHE4X32UNV/ISN	4	87	48	1816	1816	0.348	0.192	631.968	348.672	283.296	\$ 47.31
1890	INTERIOR	NTA MONICA-MALIBU	JOHN MUIR ELEMENTARY 2526 6TH		250 T8-4'-32W-3L-EB/ISN-X-X	(LED)3L 12T8/4F/850/DIR, 97740 (1) QHE3X32UNV/ISN	2	48	26	1816	1816	0.174	0.096	315.984	174.336	141.648	\$ 23.66
1891	INTERIOR	NTA MONICA-MALIBU	JOHN MUIR ELEMENTARY 2526 6TH		254 T8-4'-32W-2L-EB/ISN-X-X	(LED)2L 12T8/4F/850/DIR, 97740 (1) QHE2X32UNV/ISN	4	59	32	1816	1816	0.236	0.128	428.576	232.448	196.128	\$ 32.75

1925	INTERIOR	NTA MONICA-MALIBU U	JOHN MUIR ELEMENTARY 2526 6TH	501	T8-4'-32W-2L-EB/ISN-X-X	(LED)2L 12T8/4F/850/DIR, 97740 (1) QHE2X32UNV/ISN	1	59	32	1816	1816	0.059	0.032	107.144	58.112	49.032	\$	8.19
1926	INTERIOR	NTA MONICA-MALIBU U	JOHN MUIR ELEMENTARY 2526 6TH	205	T8-4'-32W-4L-EB/ISN-I/O-X	(LED)4L 12T8/4F/850/DIR, 97740 (2) QHE2X32UNV/ISN	5	118	64	1816	1816	0.59	0.32	1071.44	581.12	490.32	\$	81.88
1927	INTERIOR	NTA MONICA-MALIBU U	JOHN MUIR ELEMENTARY 2526 6TH	205	T8-4'-32W-3L-EB/ISN-X-X	(LED)3L 12T8/4F/850/DIR, 97740 (1) QHE3X32UNV/ISN	7	87	48	1816	1816	0.609	0.336	1105.944	610.176	495.768	\$	82.79
1928	INTERIOR	NTA MONICA-MALIBU U	JOHN MUIR ELEMENTARY 2526 6TH	205	T8-4'-32W-2L-EB/ISN-X-X	(LED)2L 12T8/4F/850/DIR, 97740 (1) QHE2X32UNV/ISN	1	59	32	1816	1816	0.059	0.032	107.144	58.112	49.032	\$	8.19
1929	INTERIOR	NTA MONICA-MALIBU U	JOHN MUIR ELEMENTARY 2526 6TH	210	T8-4'-32W-3L-EB/ISN-X-X	(LED)3L 12T8/4F/850/DIR, 97740 (1) QHE3X32UNV/ISN	12	87	48	1816	1816	1.044	0.576	1895.904	1046.016	849.888	\$	141.93
1930	INTERIOR	NTA MONICA-MALIBU U	JOHN MUIR ELEMENTARY 2526 6TH	212	T8-4'-32W-2L-EB/ISN-X-X	(LED)2L 12T8/4F/850/DIR, 97740 (1) QHE2X32UNV/ISN	1	59	32	1816	1816	0.059	0.032	107.144	58.112	49.032	\$	8.19
1931	INTERIOR	NTA MONICA-MALIBU U	JOHN MUIR ELEMENTARY 2526 6TH	200 LIBRARY	T8-4'-32W-4L-EB/ISN-X-X	(LED)4L 12T8/4F/850/DIR, 97740 (1) QHE4X32UNV/ISN	21	112	64	1816	1816	2.352	1.344	4271.232	2440.704	1830.528	\$	305.70
1932	INTERIOR	NTA MONICA-MALIBU U	JOHN MUIR ELEMENTARY 2526 6TH	200 LIBRARY	T8-4'-32W-2L-EB/ISN-X-X	(LED)2L 12T8/4F/850/DIR, 97740 (1) QHE2X32UNV/ISN	4	59	32	1816	1816	0.236	0.128	428.576	232.448	196.128	\$	32.75
1933	INTERIOR	NTA MONICA-MALIBU U	JOHN MUIR ELEMENTARY 2526 6TH	200 LIBRARY	CF/4P-DOUB-13W-2L-EB-X-X	(LED)2L GREEN CREATIVE 4 PIN PLUG & PLAY 40820 11	9	28	22	1816	1816	0.252	0.198	457.632	359.568	98.064	\$	16.38
1934	INTERIOR	NTA MONICA-MALIBU U	JOHN MUIR ELEMENTARY 2526 6TH	200 LIBRARY	T8-4'-32W-2L-EB/ISN-X-X	(LED)2L 12T8/4F/850/DIR, 97740 (1) QHE2X32UNV/ISN	1	59	32	1816	1816	0.059	0.032	107.144	58.112	49.032	\$	8.19
1935	INTERIOR	NTA MONICA-MALIBU U	JOHN MUIR ELEMENTARY 2526 6TH	211	T8-4'-32W-2L-EB/ISN-X-X	(LED)2L 12T8/4F/850/DIR, 97740 (1) QHE2X32UNV/ISN	2	59	32	1816	1816	0.118	0.064	214.288	116.224	98.064	\$	16.38
1936	EXTERIOR	NTA MONICA-MALIBU U	JOHN MUIR ELEMENTARY 2526 6TH	200 EXTERIOR	CF/4P-DOUB-26W-2L-EB-X-X	(LED)2L 18.5W 4 PIN LED19GX24q-H/840 HORIZONTAL (R	12	51	37	3650	3650	0.612	0.444	2233.8	1620.6	613.2	\$	102.40
1937	INTERIOR	NTA MONICA-MALIBU U	JOHN MUIR ELEMENTARY 2526 6TH	1	T8-4'-32W-3L-EB/ISN-I/O-X	(LED)3L 12T8/4F/850/DIR, 97740 (1) QHE1X32UNV/ISN AN	12	90	48	1816	1816	1.08	0.576	1961.28	1046.016	915.264	\$	152.85
1938	INTERIOR	NTA MONICA-MALIBU U	JOHN MUIR ELEMENTARY 2526 6TH	2	T8-4'-32W-3L-EB/ISN-I/O-X	(LED)3L 12T8/4F/850/DIR, 97740 (1) QHE1X32UNV/ISN AN	12	90	48	1816	1816	1.08	0.576	1961.28	1046.016	915.264	\$	152.85
1939	EXTERIOR	NTA MONICA-MALIBU U	JOHN MUIR ELEMENTARY 2526 6TH	1 AND 2 EXTERIOR	CF/4P-DOUB-26W-1L-EB-X-X	(LED)NEW DECO 20W PORCHLIGHT WALLPACK D411-LF	2	27	20	3650	3650	0.054	0.04	197.1	146	51.1	\$	8.53
1940	INTERIOR	NTA MONICA-MALIBU U	JOHN MUIR ELEMENTARY 2526 6TH	600	T8-4'-32W-2L-EB/ISN-X-X	(LED)2L 12T8/4F/850/DIR, 97740 (1) QHE2X32UNV/ISN	1	59	32	1816	1816	0.059	0.032	107.144	58.112	49.032	\$	8.19
1941	INTERIOR	NTA MONICA-MALIBU U	JOHN MUIR ELEMENTARY 2526 6TH	601	T8-4'-32W-2L-EB/ISN-X-X	(LED)2L 12T8/4F/850/DIR, 97740 (1) QHE2X32UNV/ISN	1	59	32	1816	1816	0.059	0.032	107.144	58.112	49.032	\$	8.19
1942	INTERIOR	NTA MONICA-MALIBU U	JOHN MUIR ELEMENTARY 2526 6TH	620	CF/4P-DOUB-26W-2L-EB-X-X	(LED)2L 18.5W 4 PIN LED19GX24q-H/840 HORIZONTAL (R	9	51	37	1816	1816	0.459	0.333	833.544	604.728	228.816	\$	38.21
1943	INTERIOR	NTA MONICA-MALIBU U	JOHN MUIR ELEMENTARY 2526 6TH	620	CF/4P-DOUB-26W-2L-EB-X-X	(LED)2L 18.5W 4 PIN LED19GX24q-H/840 HORIZONTAL (R	5	51	37	1816	1816	0.255	0.185	463.08	335.96	127.12	\$	21.23
1944	INTERIOR	NTA MONICA-MALIBU U	JOHN MUIR ELEMENTARY 2526 6TH	620	MH-MED-100W-1L-CWA-X-X	(LED) LRT8-45-40-X-G3 w/ LRT800-P-W-X, **NEED TO KN	4	128	45	1816	1816	0.512	0.18	929.792	326.88	602.912	\$	100.69
1945	INTERIOR	NTA MONICA-MALIBU U	JOHN MUIR ELEMENTARY 2526 6TH	620	T8-4'-32W-2L-EB/ISN-X-X	(LED)2L 12T8/4F/850/DIR, 97740 (1) QHE2X32UNV/ISN	3	59	32	1816	1816	0.177	0.096	321.432	174.336	147.096	\$	24.57
1946	INTERIOR	NTA MONICA-MALIBU U	JOHN MUIR ELEMENTARY 2526 6TH	620	T8-4'-32W-3L-EB/ISN-X-X	(LED)3L 12T8/4F/850/DIR, 97740 (1) QHE3X32UNV/ISN	4	87	48	1816	1816	0.348	0.192	631.968	348.672	283.296	\$	47.31
1947	INTERIOR	NTA MONICA-MALIBU U	JOHN MUIR ELEMENTARY 2526 6TH	625	T8-4'-32W-2L-EB/ISN-X-X	(LED)2L 12T8/4F/850/DIR, 97740 (1) QHE2X32UNV/ISN	1	59	32	1816	1816	0.059	0.032	107.144	58.112	49.032	\$	8.19
1948	INTERIOR	NTA MONICA-MALIBU U	JOHN MUIR ELEMENTARY 2526 6TH	615	T8-4'-32W-4L-EB/ISN-I/O-X	(LED)4L 12T8/4F/850/DIR, 97740 (2) QHE2X32UNV/ISN	10	118	64	1816	1816	1.18	0.64	2142.88	1162.24	980.64	\$	163.77
1949	INTERIOR	NTA MONICA-MALIBU U	JOHN MUIR ELEMENTARY 2526 6TH	615	T8-4'-32W-2L-EB/ISN-I/O-X	(LED)2L 12T8/4F/850/DIR, 97740 (1) QHE1X32UNV/ISN AN	2	59	32	1816	1816	0.118	0.064	214.288	116.224	98.064	\$	16.38
1950	INTERIOR	NTA MONICA-MALIBU U	JOHN MUIR ELEMENTARY 2526 6TH	610	T8-4'-32W-4L-EB/ISN-I/O-X	(LED)4L 12T8/4F/850/DIR, 97740 (2) QHE2X32UNV/ISN	10	118	64	1816	1816	1.18	0.64	2142.88	1162.24	980.64	\$	163.77
1951	INTERIOR	NTA MONICA-MALIBU U	JOHN MUIR ELEMENTARY 2526 6TH	610	T8-4'-32W-2L-EB/ISN-I/O-X	(LED)2L 12T8/4F/850/DIR, 97740 (1) QHE1X32UNV/ISN AN	2	59	32	1816	1816	0.118	0.064	214.288	116.224	98.064	\$	16.38
1952	INTERIOR	NTA MONICA-MALIBU U	JOHN MUIR ELEMENTARY 2526 6TH	605	T8-4'-32W-4L-EB/ISN-I/O-X	(LED)4L 12T8/4F/850/DIR, 97740 (2) QHE2X32UNV/ISN	10	118	64	1816	1816	1.18	0.64	2142.88	1162.24	980.64	\$	163.77
1953	INTERIOR	NTA MONICA-MALIBU U	JOHN MUIR ELEMENTARY 2526 6TH	605	T8-4'-32W-2L-EB/ISN-I/O-X	(LED)2L 12T8/4F/850/DIR, 97740 (1) QHE1X32UNV/ISN AN	2	59	32	1816	1816	0.118	0.064	214.288	116.224	98.064	\$	16.38
1954	INTERIOR	NTA MONICA-MALIBU U	JOHN MUIR ELEMENTARY 2526 6TH	600	T8-4'-32W-4L-EB/ISN-I/O-X	(LED)4L 12T8/4F/850/DIR, 97740 (2) QHE2X32UNV/ISN	10	118	64	1816	1816	1.18	0.64	2142.88	1162.24	980.64	\$	163.77
1955	INTERIOR	NTA MONICA-MALIBU U	JOHN MUIR ELEMENTARY 2526 6TH	600	T8-4'-32W-2L-EB/ISN-I/O-X	(LED)2L 12T8/4F/850/DIR, 97740 (1) QHE1X32UNV/ISN AN	2	59	32	1816	1816	0.118	0.064	214.288	116.224	98.064	\$	16.38
1956	INTERIOR	NTA MONICA-MALIBU U	JOHN MUIR ELEMENTARY 2526 6TH	603	T8-4'-32W-2L-EB/ISN-X-X	(LED)2L 12T8/4F/850/DIR, 97740 (1) QHE2X32UNV/ISN	2	59	32	1816	1816	0.118	0.064	214.288	116.224	98.064	\$	16.38
1957	INTERIOR	NTA MONICA-MALIBU U	JOHN MUIR ELEMENTARY 2526 6TH	650	T8-4'-32W-2L-EB/ISN-X-X	(LED)2L 12T8/4F/850/DIR, 97740 (1) QHE2X32UNV/ISN	1	59	32	1816	1816	0.059	0.032	107.144	58.112	49.032	\$	8.19
1958	INTERIOR	NTA MONICA-MALIBU U	JOHN MUIR ELEMENTARY 2526 6TH	655	T8-4'-32W-4L-EB/ISN-I/O-X	(LED)4L 12T8/4F/850/DIR, 97740 (2) QHE2X32UNV/ISN	10	118	64	1816	1816	1.18	0.64	2142.88	1162.24	980.64	\$	163.77
1959	INTERIOR	NTA MONICA-MALIBU U	JOHN MUIR ELEMENTARY 2526 6TH	655	T8-4'-32W-2L-EB/ISN-I/O-X	(LED)2L 12T8/4F/850/DIR, 97740 (1) QHE1X32UNV/ISN AN	2	59	32	1816	1816	0.118	0.064	214.288	116.224	98.064	\$	16.38
1960	INTERIOR	NTA MONICA-MALIBU U	JOHN MUIR ELEMENTARY 2526 6TH	WORKROOM	CF/4P-DOUB-26W-2L-EB-X-X	(LED)2L 18.5W 4 PIN LED19GX24q-H/840 HORIZONTAL (R	4	51	37	1816	1816	0.204	0.148	370.464	268.768	101.696	\$	16.98
1961	INTERIOR	NTA MONICA-MALIBU U	JOHN MUIR ELEMENTARY 2526 6TH	WORKROOM	T8-4'-32W-3L-EB/ISN-X-X	(LED)3L 12T8/4F/850/DIR, 97740 (1) QHE3X32UNV/ISN	6	87	48	1816	1816	0.522	0.288	947.952	523.008	424.944	\$	70.97
1962	INTERIOR	NTA MONICA-MALIBU U	JOHN MUIR ELEMENTARY 2526 6TH	655	T8-4'-32W-4L-EB/ISN-I/O-X	(LED)4L 12T8/4F/850/DIR, 97740 (2) QHE2X32UNV/ISN	9	118	64	1816	1816	1.062	0.576	1928.592	1046.016	882.576	\$	147.39
1963	INTERIOR	NTA MONICA-MALIBU U	JOHN MUIR ELEMENTARY 2526 6TH	655	T8-4'-32W-2L-EB/ISN-I/O-X	(LED)2L 12T8/4F/850/DIR, 97740 (1) QHE1X32UNV/ISN AN	1	59	32	1816	1816	0.059	0.032	107.144	58.112	49.032	\$	8.19
1964	INTERIOR	NTA MONICA-MALIBU U	JOHN MUIR ELEMENTARY 2526 6TH	660	T8-4'-32W-4L-EB/ISN-I/O-X	(LED)4L 12T8/4F/850/DIR, 97740 (2) QHE2X32UNV/ISN	9	118	64	1816	1816	1.062	0.576	1928.592	1046.016	882.576	\$	147.39
1965	INTERIOR	NTA MONICA-MALIBU U	JOHN MUIR ELEMENTARY 2526 6TH	660	T8-4'-32W-2L-EB/ISN-I/O-X	(LED)2L 12T8/4F/850/DIR, 97740 (1) QHE1X32UNV/ISN AN	2	59	32	1816	1816	0.118	0.064	214.288	116.224	98.064	\$	16.38
1966	EXTERIOR	NTA MONICA-MALIBU U	JOHN MUIR ELEMENTARY 2526 6TH	600 EXTERIOR	CF/4P-DOUB-26W-2L-EB-X-X	(LED)2L 18.5W 4 PIN LED19GX24q-H/840 HORIZONTAL (R	5	51	37	3650	3650	0.255	0.185	930.75	675.25	255.5	\$	42.67
1967	EXTERIOR	NTA MONICA-MALIBU U	JOHN MUIR ELEMENTARY 2526 6TH	600 EXTERIOR	CF/4P-DOUB-13W-2L-EB-X-X	(LED)2L GREEN CREATIVE 4 PIN PLUG & PLAY 40820 11	10	28	22	3650	3650	0.28	0.22	1022	803	219	\$	36.57
1968	EXTERIOR	NTA MONICA-MALIBU U	JOHN MUIR ELEMENTARY 2526 6TH	PARKING	HPS-MED-150W-1L-CWA-X-X	(LED)NEW DECO AREA LIGHT D824-LED-40-50-UNV-LP-T	13	188	38	3650	3650	2.444	0.494	8920.6	1803.1	7117.5	\$	1,188.62
1969	EXTERIOR	NTA MONICA-MALIBU U	JOHN MUIR ELEMENTARY 2526 6TH	QUAD POST TOP	HPS-MED-100W-1L-CWA-X-X	(LED)1L GREEN CREATIVE COB 45HID/850/277V/E26/BYP	8	138	45	3650	3650	1.104	0.36	4029.6	1314	2715.6	\$	453.51
1970	INTERIOR	NTA MONICA-MALIBU U	JOHN MUIR ELEMENTARY 2526 6TH	A PORTABLE	T8-4'-32W-2L-EB/ISN-X-X	(LED)2L 12T8/4F/850/DIR, 97740 (1) QHE2X32UNV/ISN	12	59	32	1816	1816	0.708	0.384	1285.728	697.344	588.384	\$	98.26
1971	INTERIOR	NTA MONICA-MALIBU U	JOHN MUIR ELEMENTARY 2526 6TH	B PORTABLE	T8-4'-32W-2L-EB/ISN-X-X	(LED)2L 12T8/4F/850/DIR, 97740 (1) QHE2X32UNV/ISN	12	59	32	1816	1816	0.708	0.384	1285.728	697.344	588.384	\$	98.26
1972	INTERIOR	NTA MONICA-MALIBU U	JOHN MUIR ELEMENTARY 2526 6TH	C PORTABLE	T8-4'-32W-2L-EB/ISN-X-X	(LED)2L 12T8/4F/850/DIR, 97740 (1) QHE2X32UNV/ISN	12	59	32	1816	1816	0.708	0.384	1285.728	697.344	588.384	\$	98.26
1973	INTERIOR	NTA MONICA-MALIBU U	JOHN MUIR ELEMENTARY 2526 6TH	D PORTABLE	T8-4'-32W-2L-EB/ISN-X-X	(LED)2L 12T8/4F/850/DIR, 97740 (1) QHE2X32UNV/ISN	12	59	32	1816	1816	0.708	0.384	1285.728	697.344	588.384	\$	98.26
1974	EXTERIOR	NTA MONICA-MALIBU U	JOHN MUIR ELEMENTARY 2526 6TH	PORTABLES EXT	HPS-MED-150W-1L-CWA-X-X	(LED)NEW DECO MEDIUM WALLPACK D414-LED-40-50-U	1	188	40	3650	3650	0.188	0.04	686.2	146	540.2	\$	90.21
1975	EXTERIOR	NTA MONICA-MALIBU U	JOHN MUIR ELEMENTARY 2526 6TH	PORTABLES EXT	HPS-MOG-250W-1L-CWA-X-X	(LED)NEW DECO MEDIUM FLOOD D211-LED-60-50-UNV-	1	295	60	3650	3650	0.295	0.06	1076.75	219	857.75	\$	143.24
1976	EXTERIOR	NTA MONICA-MALIBU U	JOHN MUIR ELEMENTARY 2526 6TH	PORTABLES EXT	CF/4P-DOUB-26W-1L-EB-X-X	(LED)NEW DECO 20W PORCHLIGHT WALLPACK D411-LF	1	27	20	3650	3650	0.027	0.02	98.55	73	25.55	\$	4.27
1977	INTERIOR	NTA MONICA-MALIBU U	JOHN MUIR ELEMENTARY 2526 6TH	PE OFFICE	T8-4'-32W-2L-EB/ISN-X-X	(LED)2L 12T8/4F/850/DIR, 97740 (1) QHE2X32UNV/ISN	6	59	32	1816	1816	0.354						