



Malibu Middle/ High School Aquatics

Phase 3A

Design Review

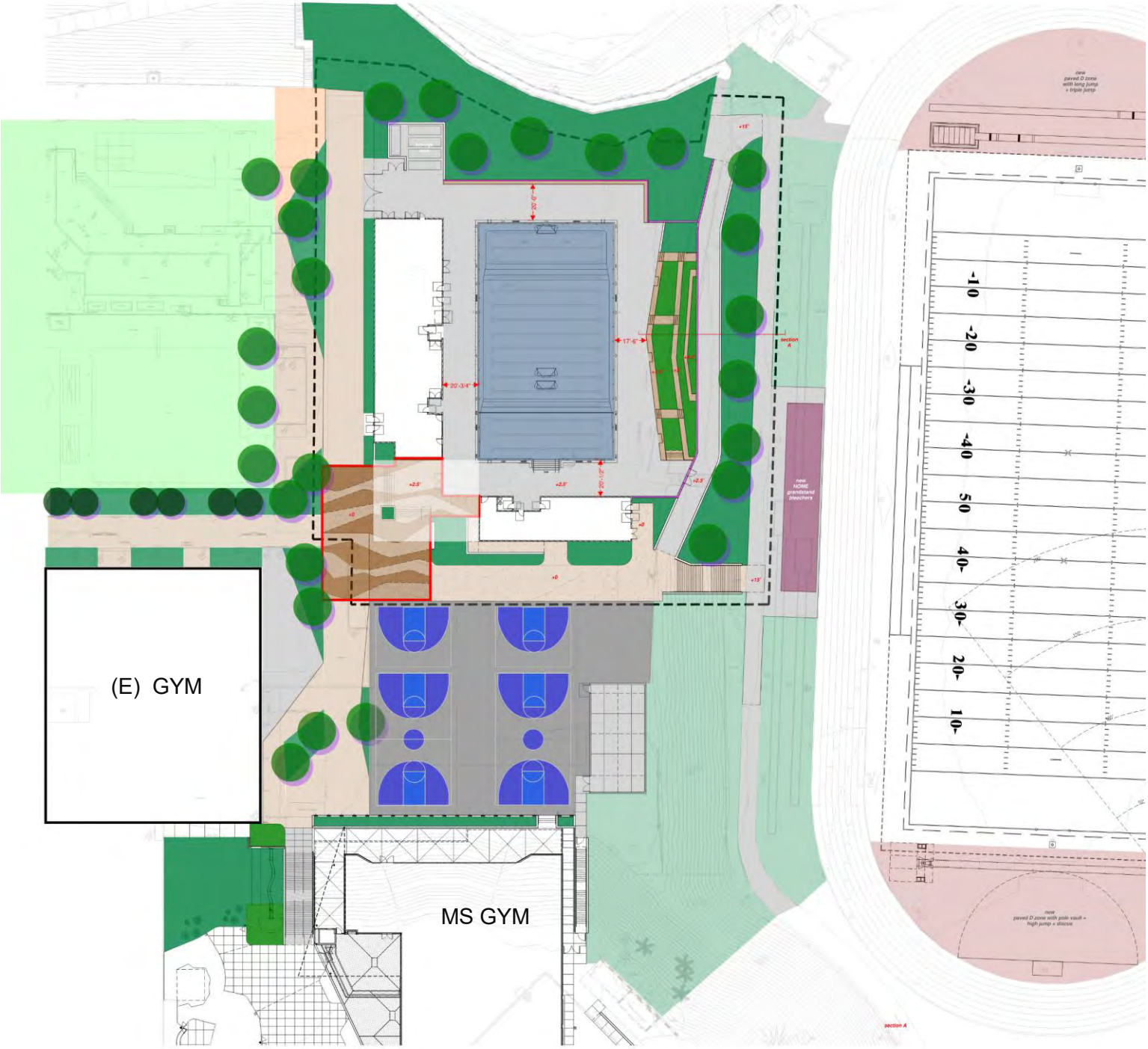
September 16, 2025

AQUATICS UPDATE

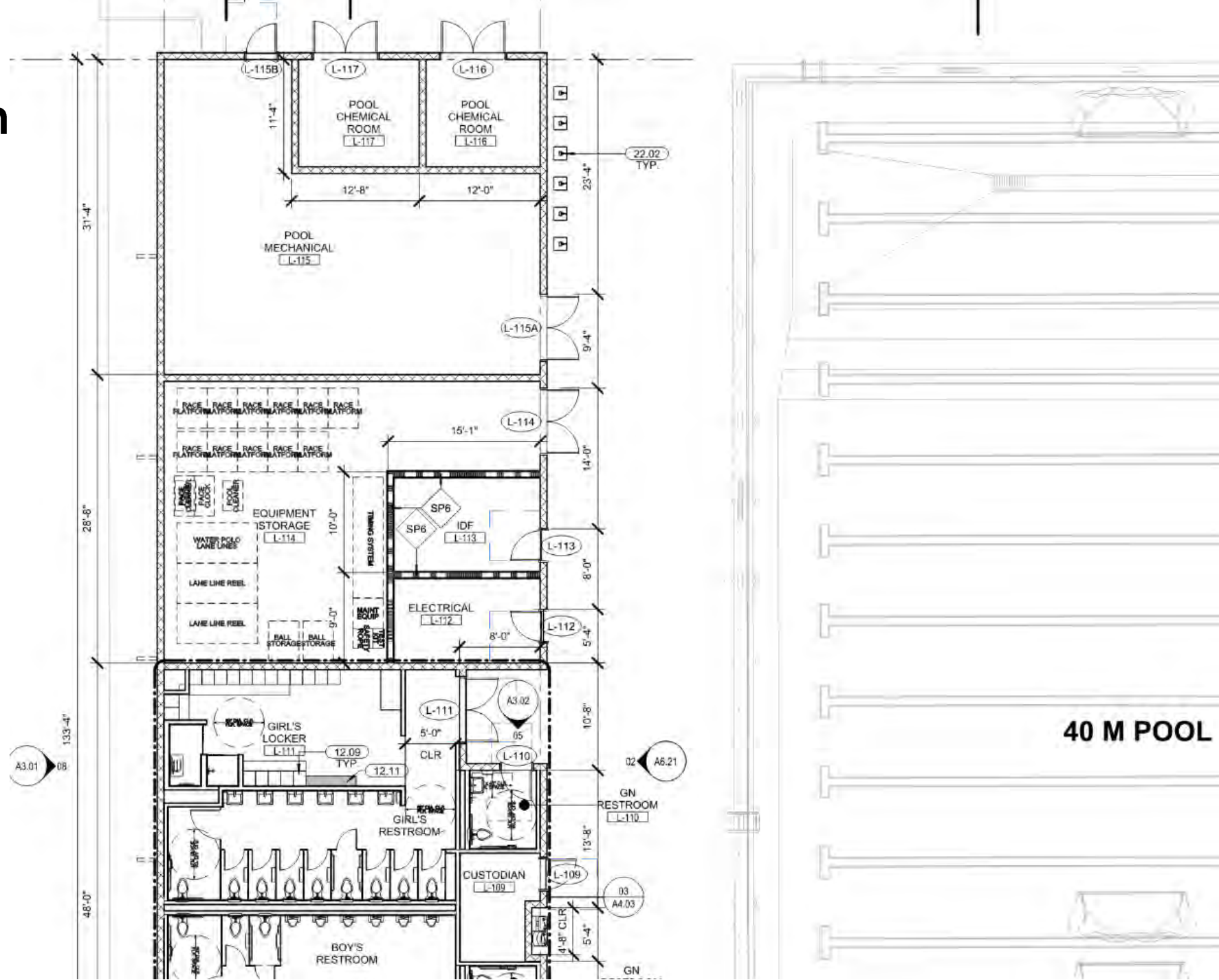
aquatics | prior design



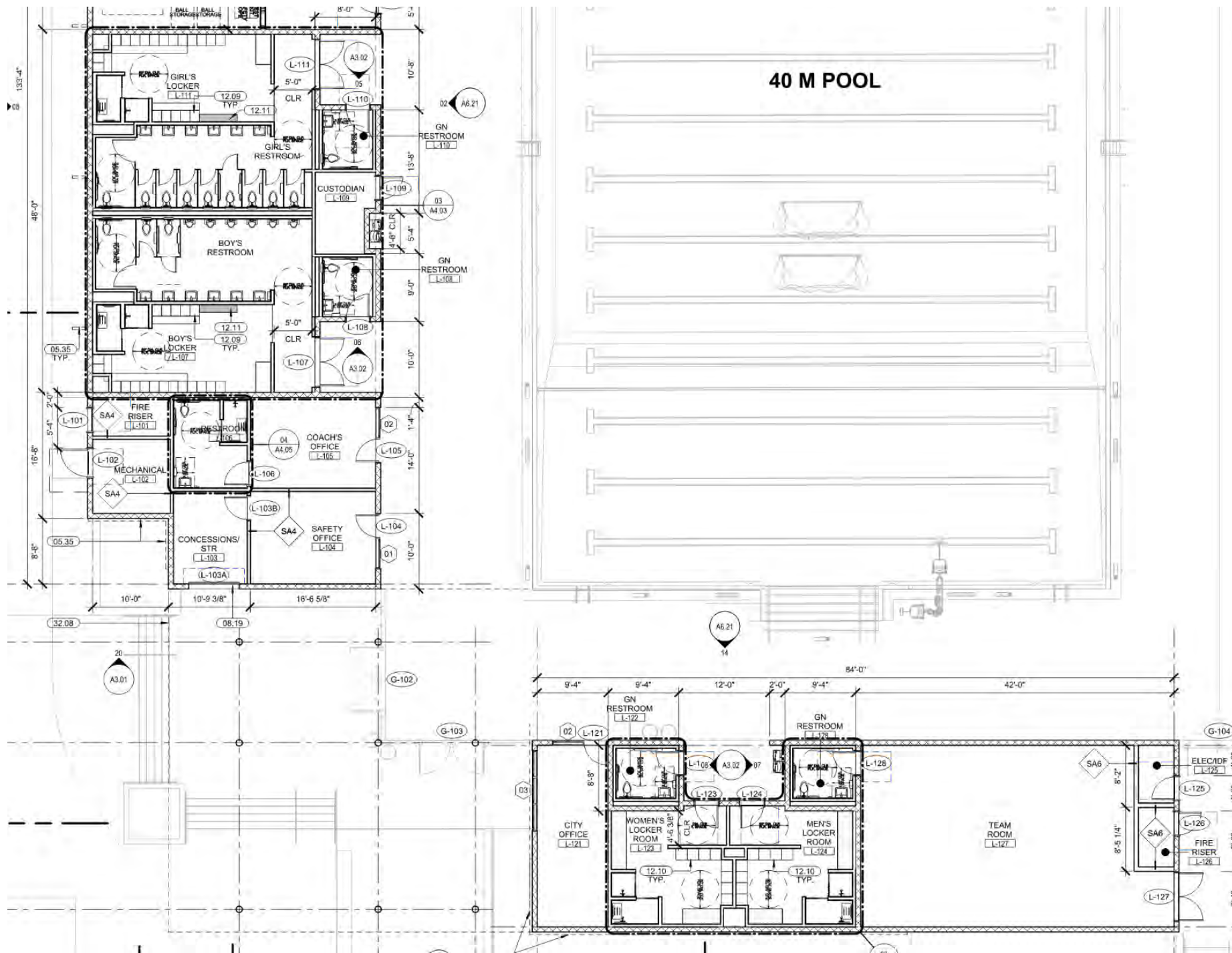
aquatics | site plan

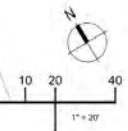


aquatics | floor plan



aquatics | floor plan



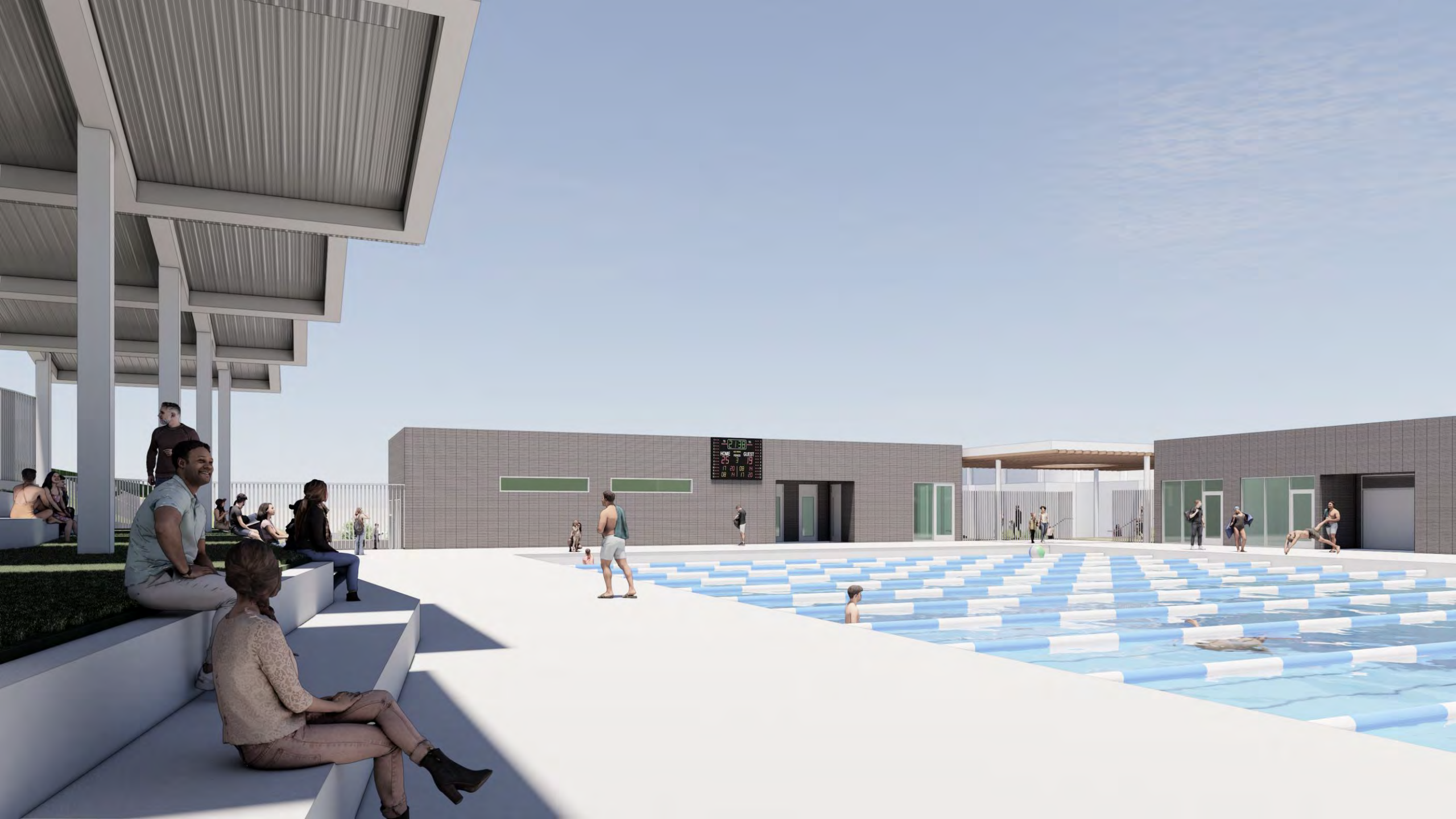
[illegible]

aquatics | aerial









Malibu MHS | stakeholder engagement

The following individuals participated in various Focus and User Group meetings:

Mike Matthews
Kate Manisco
Adam Almeida
Kristin Riesgo
Mr. Neier
Sue Murphree
Steve Hotchkiss
Patrick Miller, MHS
Cindy Smith, MHS
Greg Schellenberg, MMS
Lisa Lambert, PE
Richard Lawson, PE
Mike Mulligan, PE
Daryl Adams, Athletic Coordinator
Noemi Avila-Zamudio, NAZ
Michael Burke, SMMUSD
Steve Massetti, SMMUSD
Carey Upton, SMMUSD

THANK YOU!



Changing Lives by Design™



pool size comparison

	40-meter	50-meter
water surface area	9,942 sf	12,350 sf
shallow water users	58	TBD
Pool Phase 3A hard cost (prior to VE process)	\$35,747,971	\$3.33m more than 40-m (incl. bldg. and site)*
Pool Phase 3A hard cost (per CW Driver 7/7/2025)	\$27,583,626	
operational cost w/ pool cover	± \$129,600/yr	± \$181,350/yr
toilet fixture count	12	17
lavatory count	8	10
shower count	14	16
		*rough order estimate, incl. 650 sf bldg. size increase for additional toilets and pool equipment

DESIGN CRITERIA

Surface Area (square feet)	9,942
Minimum Depth (feet):	3.5
Maximum Depth (feet):	7.0
Volume (gallons):	390,422
Turnover (gpm):	1,085

CATEGORY	AVG. DAILY		UNIT	UNIT PRICE	DAILY COST	ANNUAL COST
	USAGE					
Water	1,793.4		GAL	\$0.01	\$17.93	\$6,276.77
Sewer	774.6		GAL	\$0.01	\$7.75	\$2,711.27
Electricity	399.8		KWH	\$0.30	\$119.93	\$41,974.99
Natural Gas	200.4		THRM	\$1.28	\$256.55	\$89,792.96
Sodium Hypochlorite	16.7		GAL	\$2.50	\$41.83	\$14,640.84
Muriatic Acid	4.2		GAL	\$3.00	\$12.55	\$4,392.25
TOTALS					<u>\$456.54</u>	<u>\$159,789.08</u>

ASSUMPTIONS:

- 1. Annual Cost based upon 350 days of operation.
- 2. Analysis does not include maintenance/operations labor costs.
- 3. Water usage based upon 60" annual evaporative loss and filter backwash averaging once weekly.
- 4. Electrical usage based upon 18 hours per day operation.
- 5. Natural gas usage based upon air velocity of 5 ft/second, 82 degree water and 60 degree air temperature.
- 6. Chemical usage based upon maintaining 1.0 PPM chlorine and pH of 7.2 - 7.4.

DESIGN CRITERIA

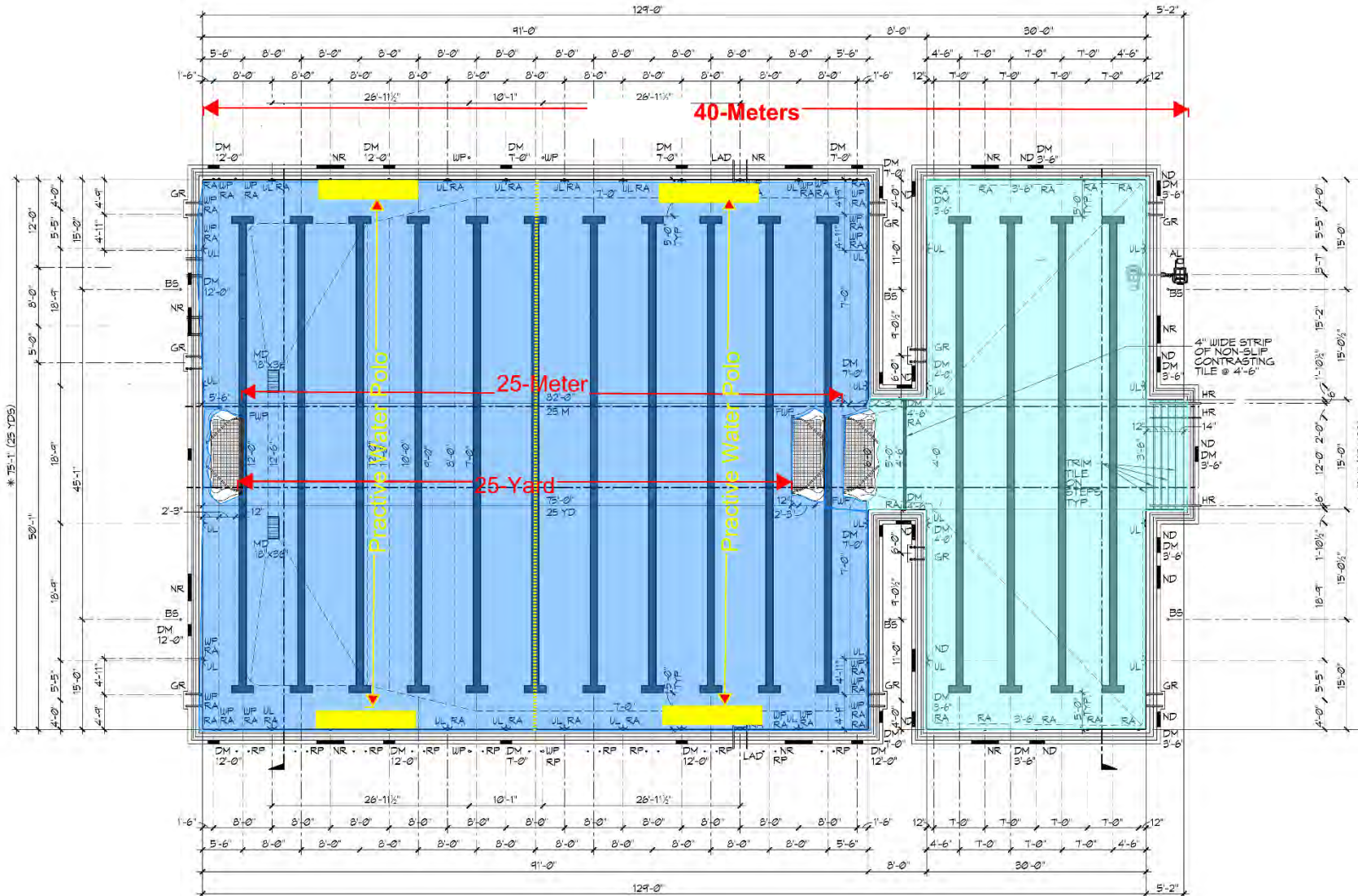
Surface Area (square feet)	12,369
Minimum Depth (feet):	3.5
Maximum Depth (feet):	7.0
Volume (gallons):	485,731
Turnover (gpm):	1,349

CATEGORY	AVG. DAILY		UNIT	UNIT PRICE	DAILY COST	ANNUAL COST
	USAGE					
Water	2,231.2		GAL	\$0.01	\$22.31	\$7,809.03
Sewer	963.8		GAL	\$0.01	\$9.64	\$3,373.13
Electricity	497.4		KWH	\$0.30	\$149.21	\$52,221.76
Natural Gas	249.4		THRM	\$1.28	\$319.18	\$111,712.85
Sodium Hypochlorite	20.8		GAL	\$2.50	\$52.04	\$18,214.90
Muriatic Acid	5.2		GAL	\$3.00	\$15.61	\$5,464.47
TOTALS					<u>\$567.99</u>	<u>\$198,796.13</u>

ASSUMPTIONS:

- 1. Annual Cost based upon 350 days of operation.
- 2. Analysis does not include maintenance/operations labor costs.
- 3. Water usage based upon 60" annual evaporative loss and filter backwash averaging once weekly.
- 4. Electrical usage based upon 18 hours per day operation.
- 5. Natural gas usage based upon air velocity of 5 ft/second, 82 degree water and 60 degree air temperature.
- 6. Chemical usage based upon maintaining 1.0 PPM chlorine and pH of 7.2 - 7.4.

40-meter pool option | plan view



FEATURES:

Swimming

- (15) 8'-0" wide Lanes = 90 swimmers practicing at one time
- (11) Deep Water Lanes services champion swim meets

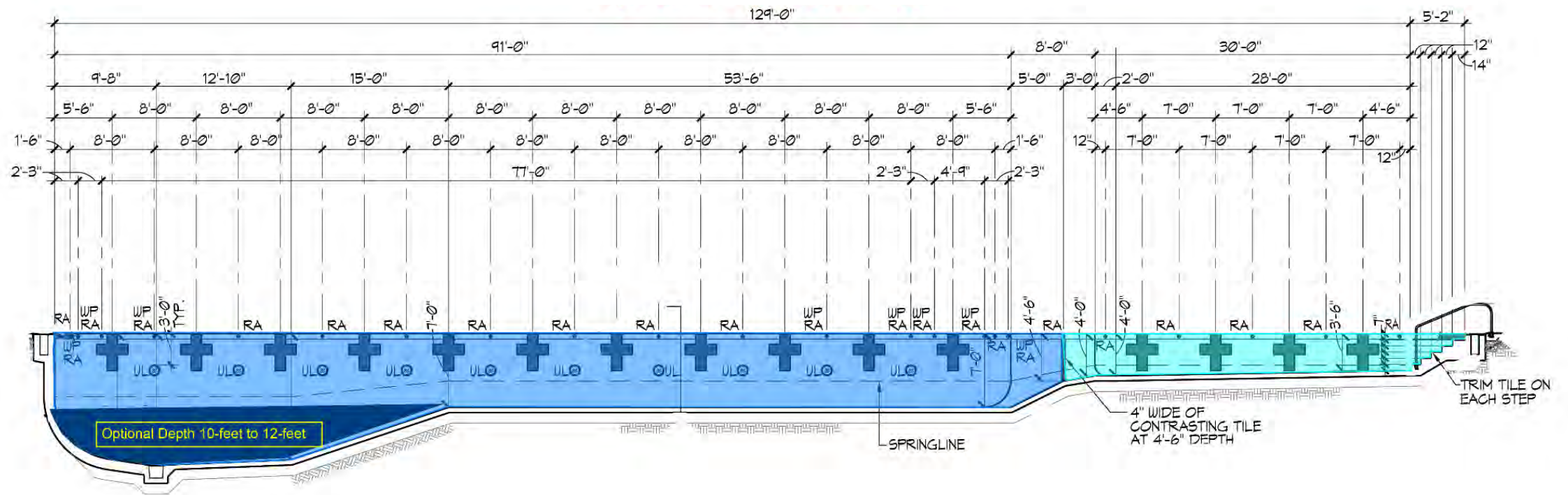
Water Polo

- 25yd & 25m Floating Water Polo Field of Play
- (2) 25yd x 45ft Water Polo Practice Fields

Shallow Water

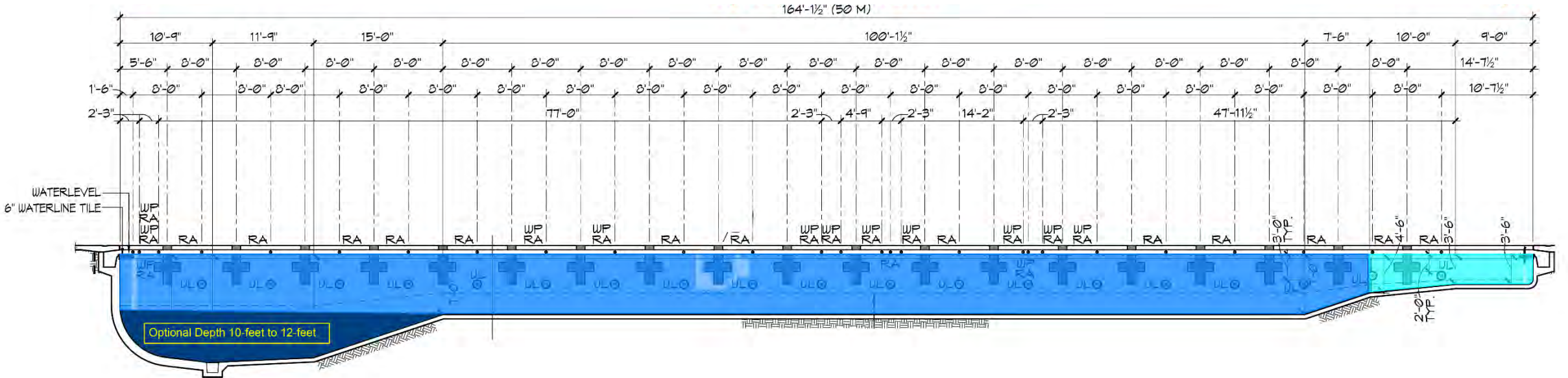
- 2,325sf shallow water = 116 maximum occupancy
- Shallow water maximum 58 participants at one time

40-meter pool option | section view



- 1,425sf shallow water = 71 maximum occupancy
- Shallow water maximum 36 participants at one time

50-meter pool option | section view



aquatics | site- 50m

