

Santa Monica-Malibu Unified School District



WILL ROGERS
LEARNING COMMUNITY



Building Futures

Stay Informed with Building Futures!

Follow the progress of construction projects at your neighborhood school, from initial designs to the final touches. See how your bond dollars are making a difference—building better futures for our students and community!

- ✓ Building updates
- ✓ Building features
- ✓ Project renderings

BOND
MEASURE
SMS!

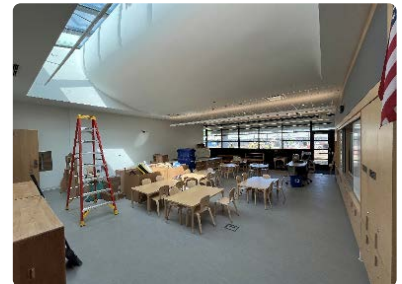


Summer 2025

Will Rogers Learning Community

Building Tomorrow's Future: New Early Elementary Building Project

The new early learning classroom building at Will Rogers' Learning Community is now open and ready to welcome students. Funded by Measure SMS, overwhelmingly approved by voters in November 2018, this project together with the new field, play yard and parking lot marks a major transformation of the Rogers' campus, creating an enhanced learning environment for its students.



New Early Elementary Building Project

The early learning building includes three state-of-the-art transitional kindergarten (TK) and four kindergarten classrooms. These classrooms are specifically designed to support the educational development of the 4-year-olds and 5-year-olds.



These classrooms feature engaging technology, flexible learning spaces, dedicated teacher workrooms and restrooms. Designed with an abundance of natural light, each room opens directly to outdoor learning and play areas, creating an environment that encourages exploration and student engagement.

This marks the first year of fully universal TK required by the state as of 2025-26, offering all children who turn 4 years old by September 1., the opportunity to attend specially designed classes led by credentialed teachers with targeted training. The TK curriculum is thoughtfully crafted to support the developmental needs of 4-year-olds and lay a strong foundation for their educational journey. Similarly, the kindergarten curriculum is tailored specifically for 5-year-olds. From the rugs

on the floor to the skylights in the ceiling, every element of these new facilities was intentionally designed to support early learning.

"We are thrilled with the opening of our new early learning building, designed to support our TK and kindergarten students," said Director of Early Learning Child Development Services Susan Samarge-Powell. "This dedicated space will provide our youngest learners with a safe, welcoming, and innovative environment to explore, grow and thrive. This investment allows us to continue providing the strongest early learning opportunities for our Santa Monica-Malibu students, setting the foundation for their lifelong success."

The new synthetic turf playfield, which Rogers' students have enjoyed over the past year, is now being integrated with new basketball courts and additional outdoor play areas.



To support parking needs at Rogers' and John Adams Middle School during construction of the new Science, Technology, Engineering, and Mathematics building, the development and completion of the northeast parking lot was expedited as part of this project. The new parking lot was completed ahead of the start of the school year and includes accessible parking and electric vehicle charging stations.

With the opening of the new building, portable classrooms P3 through P6, the last of the temporary classrooms installed on campus in the 1990s, have been demolished.

The SMMUSD Facility Improvement Projects (FIP) team would like to thank the Rogers' community and surrounding neighbors for their patience and understanding during construction.

Learn more about FIP here: <https://bit.ly/FIPHomePage>.



Read more about Rogers campus plan [here](#).

The future is bright for Rogers and with the community's support the sky is the limit!

To help keep you in the know about upcoming events and activities at your neighborhood school, please join the Hello Neighbor! email list here: <https://www.smmusd.org/Page/6878>. Be sure to subscribe to one or more schools for updates.

"A school building tells students who they are and how they should think about the world. It can help to manufacture rote obedience or independent activity; it can create high self-confidence or low self-esteem." Alison Lurie



Early Elementary Building Project

Soil removal & backfill after demo of four portables.



Early Elementary Building Project

Concrete sidewalks, fencing & trees in the north courtyard.



Early Elementary Building Project

Mecho shade install to skylights.



Santa Monica USD

<https://bit.ly/FIPHomepage>

