



SANTA MONICA-MALIBU UNIFIED SCHOOL DISTRICT

Roosevelt Elementary School

Sept. 27, 2023



Overview/agenda

- Carey Upton, Chief Operations Officer, Intro
- Dr. Amy Onyendu, Principal, Discusses the Why Factor
- Campus Master Plan
- Historical Resources
- CEQA Compliance
- Questions



SANTA MONICA-MALIBU UNIFIED SCHOOL DISTRICT

Roosevelt Elementary School Campus Master Plan

CEQA Notice of Preparation Meeting

September 27, 2023

Existing Condition







Front Entrance, 1936



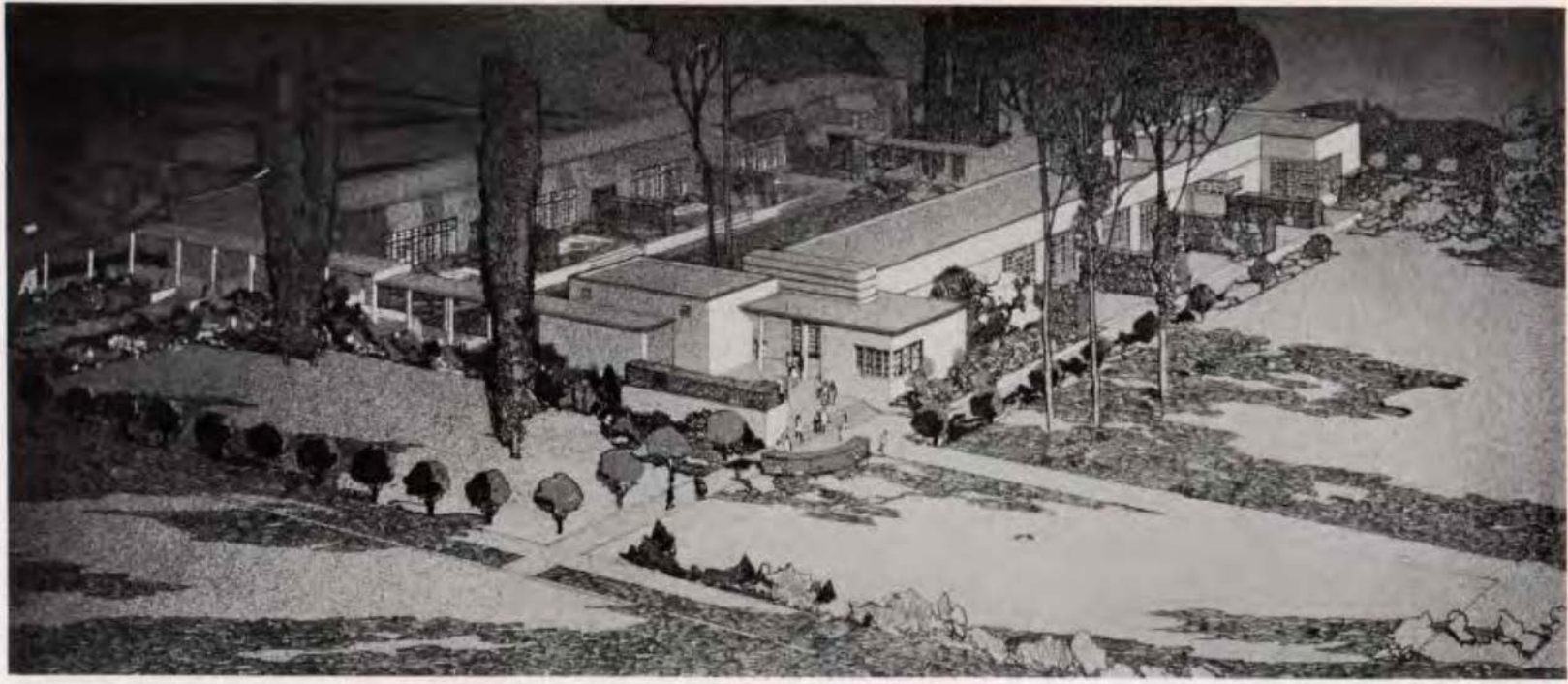
Front Entrance, 2022



Front Entrance, proposed



Rendered Aerial View, 1935



Aerial View, 2022



Aerial View, proposed



South Court, 1936



South Court, 2022



South Court, proposed



Kindergarten, proposed





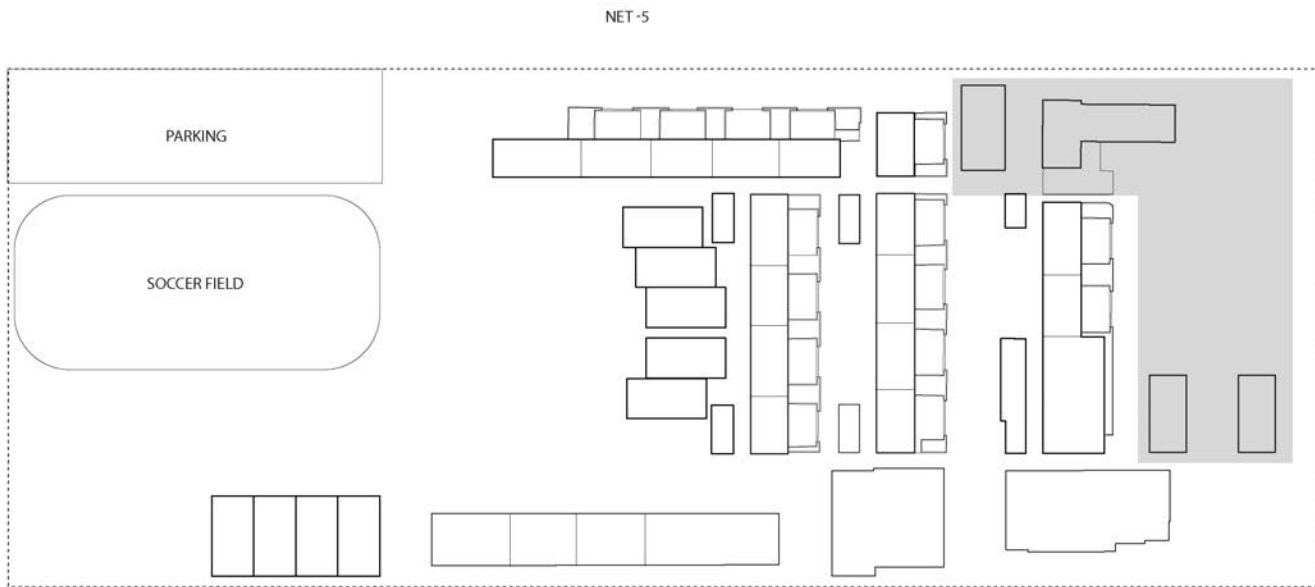




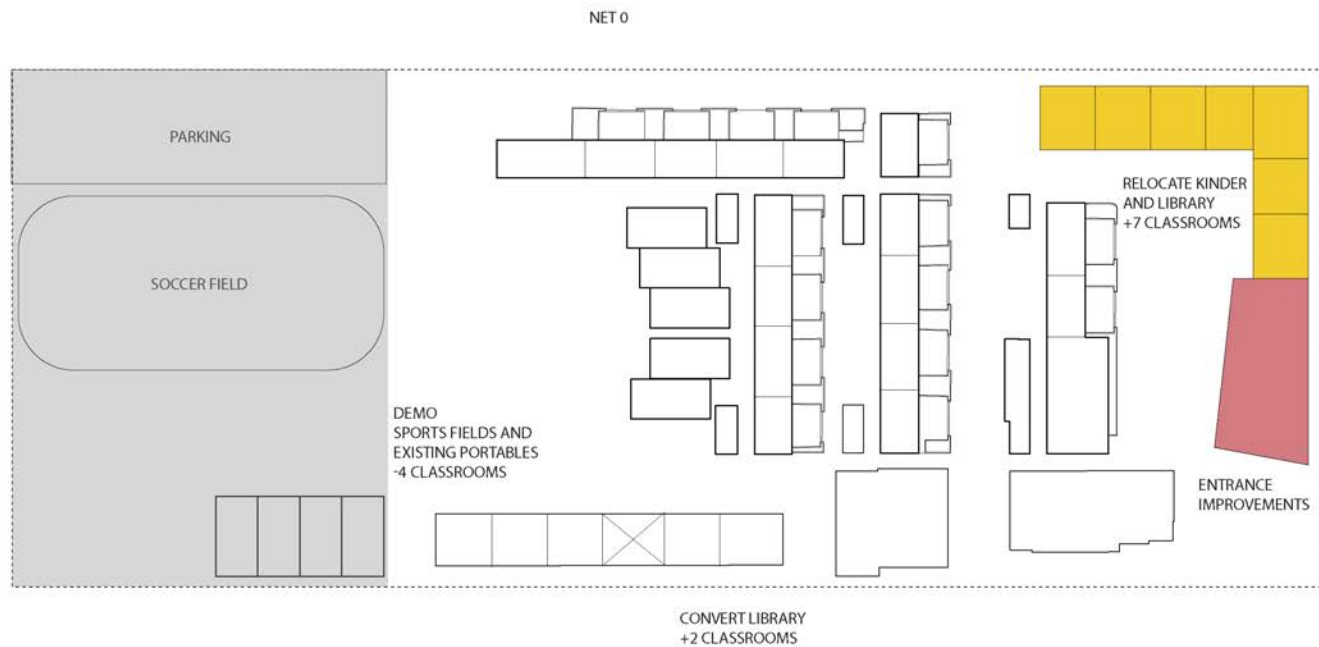




Proposed Phasing



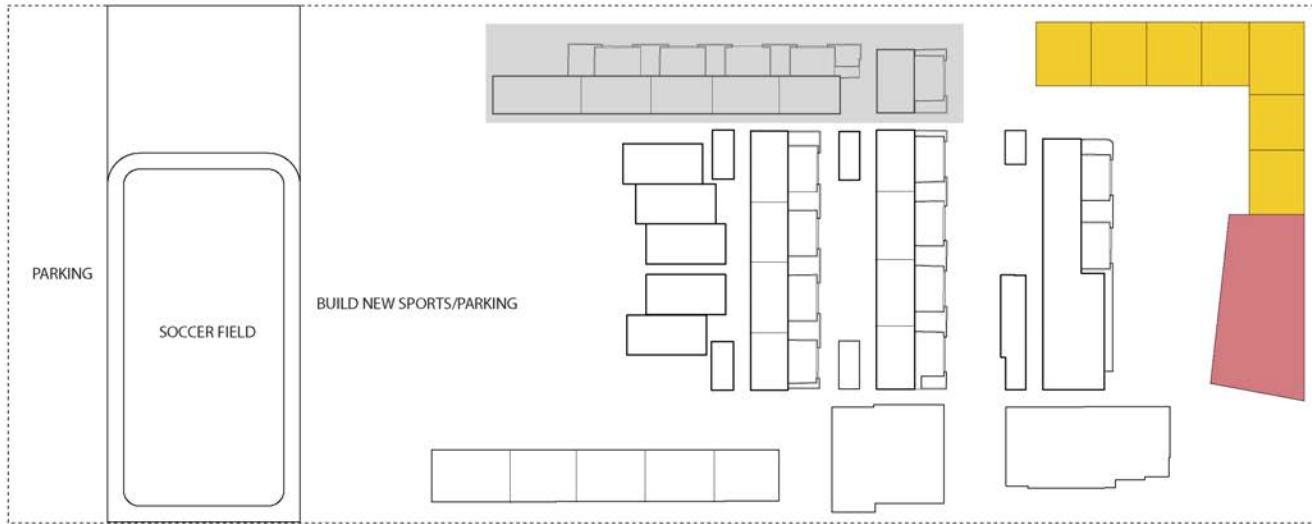
PHASE 1 DEMO



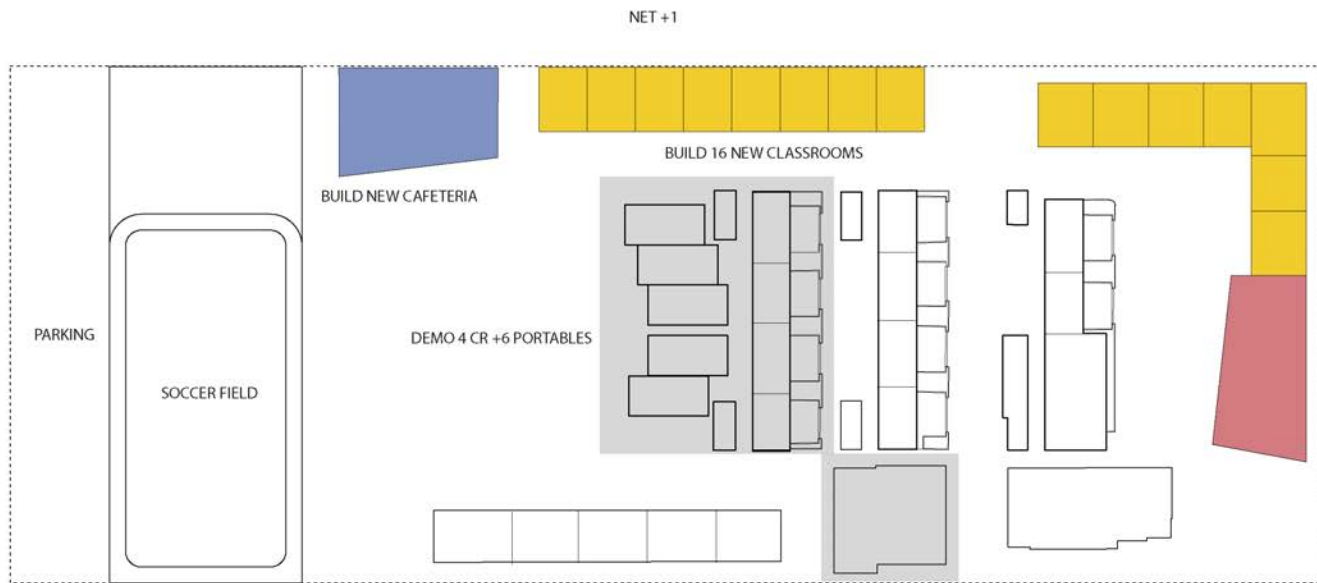
PHASE 1 BUILD + PHASE 2 DEMO



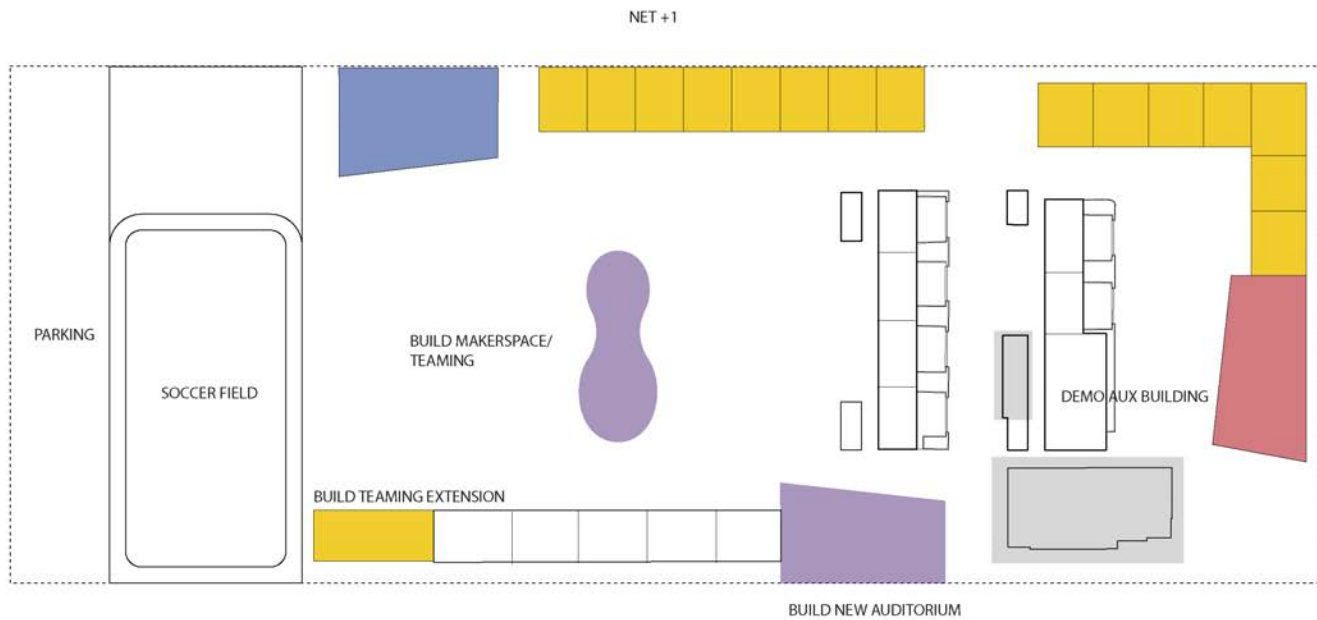
NET-6



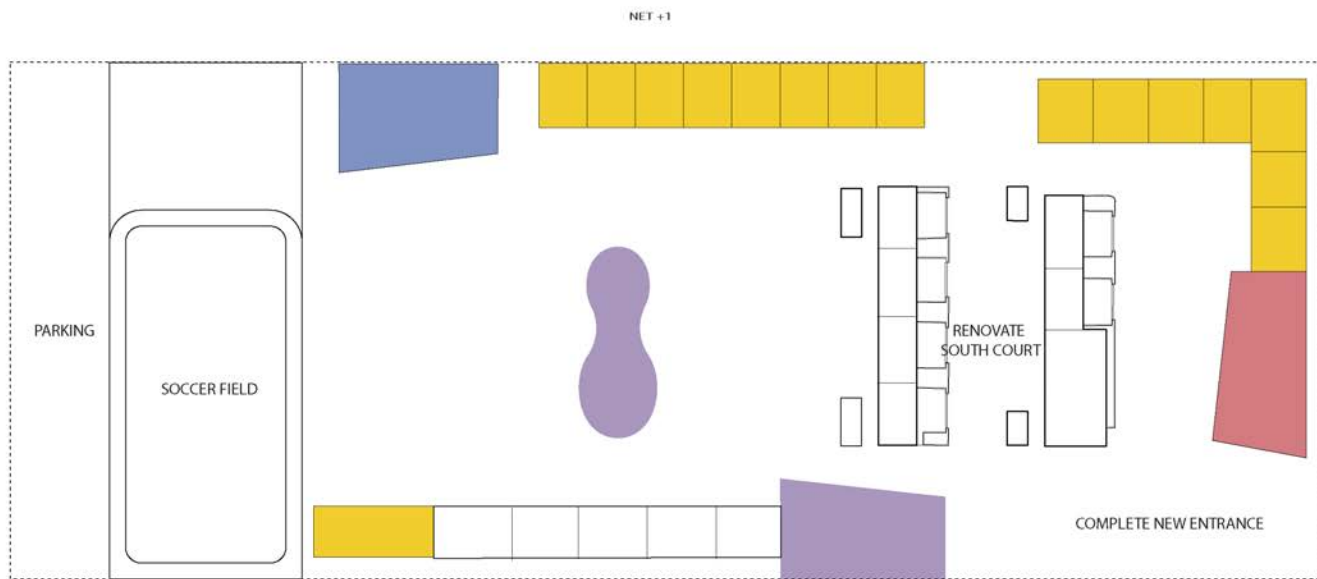
PHASE 2 BUILD + PHASE 3 DEMO



PHASE 3 BUILD + PHASE 4 DEMO



26



PHASE 5 BUILD



SANTA MONICA-MALIBU UNIFIED SCHOOL DISTRICT

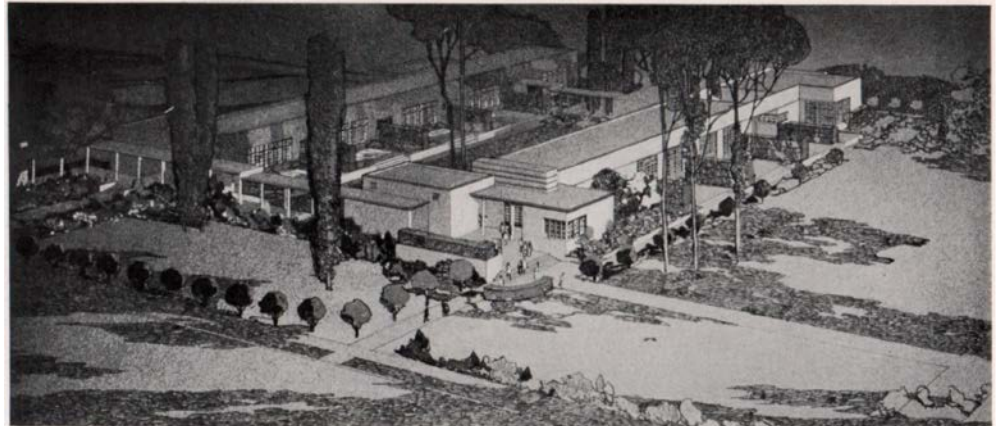


Roosevelt Elementary School

Historic Resources

Introduction

- Development History
- Eligibility & Period of Significance
- Findings: Historic District
- Project and Technical Analysis



Selected Chronology

- **1907:** First Roosevelt School Opens
- **1933:** Long Beach Earthquake damages school
- **1934:** Marsh, Smith & Powell develop the “Santa Monica Plan” to design the campus: Buildings E, G, J, and K
- **1940:** Joe M. Estep designs Buildings A, B, and C; funding from the WPA
- **1951:** Building C is extended; Buildings D and H are constructed
- **1968:** Building A is built
- **2000:** Addition to Building A is built



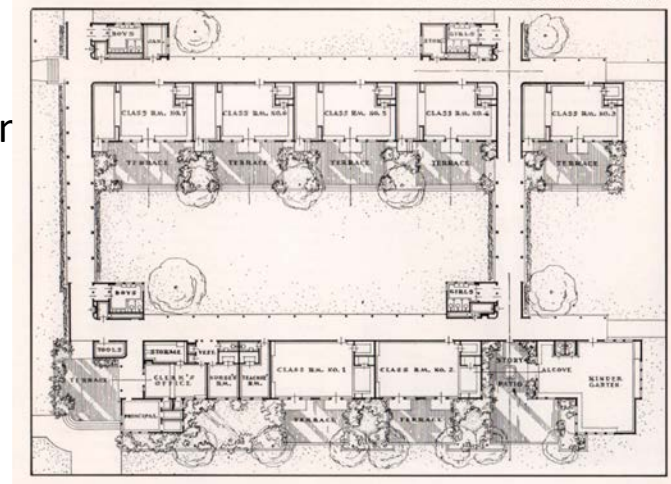
Long Beach Earthquake of 1933

- Prior to earthquake most schools were of masonry construction
- Heavily damaged after earthquake
- Temporary tent schools
- California passed the Field Act



“Santa Monica Plan” & Marsh, Smith & Powell

- Marsh, Smith and Powell:
- Meet requirements for new state construction code
- Reflect intimate, Modern design
- Emphasis on indoor-outdoor learning
- Lauded as a model for schools across the nation



PWA Development

- Federal program to alleviate unemployment during the Great Depression:
- SMMUSD received \$1.5 million in Federal Funds
- Included expansion of Roosevelt by Joe M. Estep in 1950





Eligibility & Period of Significance

▪A/1/1: 1935-1940

- Post-Long Beach Earthquake Development of School (Institutional History)
- Rise of cohesively designed campus for seismic stability
- PWA involvement- Federal program to alleviate mass unemployment during the Great Depression

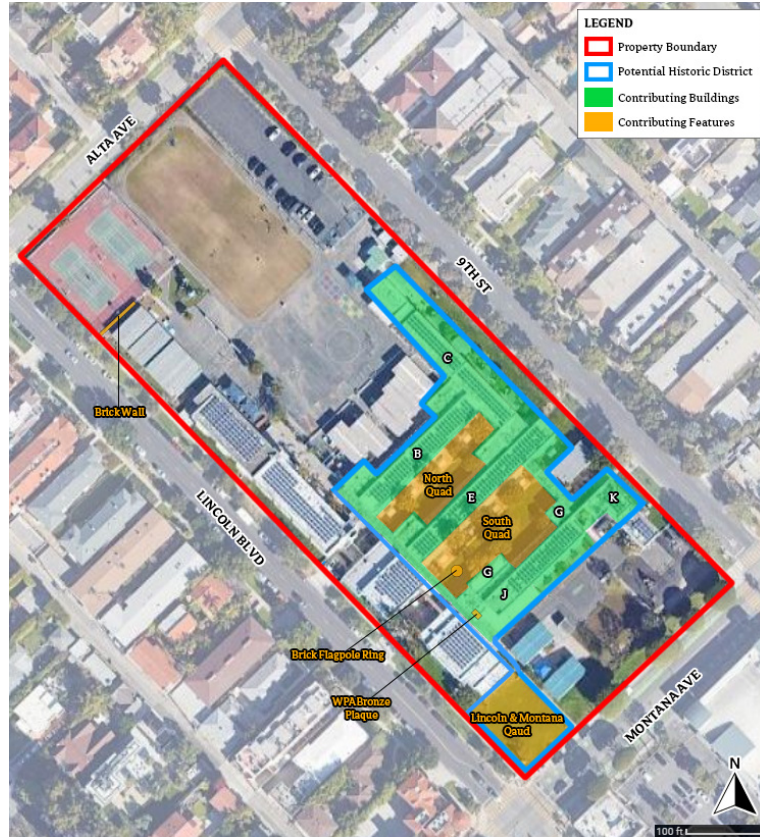
▪C/3/4-5: 1935-1940

- PWA Modern-style buildings designed to withstand seismic activity
- Designed by master architects Marsh, Smith & Powell with innovative “Santa Monica Plan”
 - Precedent-setting with functional teaching spaces, child-centered buildings, and plentiful outdoor spaces

Historic District

Current Feature Name	Year Built	Integrity	Status
Buildings			
Building B	1940	Good	Contributor
Building C	1940	Good	Contributor
Building E	1935	Good	Contributor
Building G	1935	Good	Contributor
Building J	1935	Good	Contributor
Portion of Building K	1935	Good	Contributor
Site Features			
Lincoln & Montana Quad	1935	Good	Contributor
South Courtyard	1935	Good	Contributor
North Courtyard	1940	Good	Contributor
Brick Ring	1935	Fair	Contributor
Brick Wall	1935	Fair	Contributor
Additional Features			
"Theodore Roosevelt" Panel	c. 1935	Very Good	Contributor
WPA Bronze Plaque	1940	Very Good	Contributor

Historic District



Contributors



Building B



Building C



Building E



Building G



Building J



Portion of
Building K



WPA Bronze Plaque

Contributors



Lincoln & Montana Quad



South Courtyard



North Courtyard



Brick Flagpole Ring

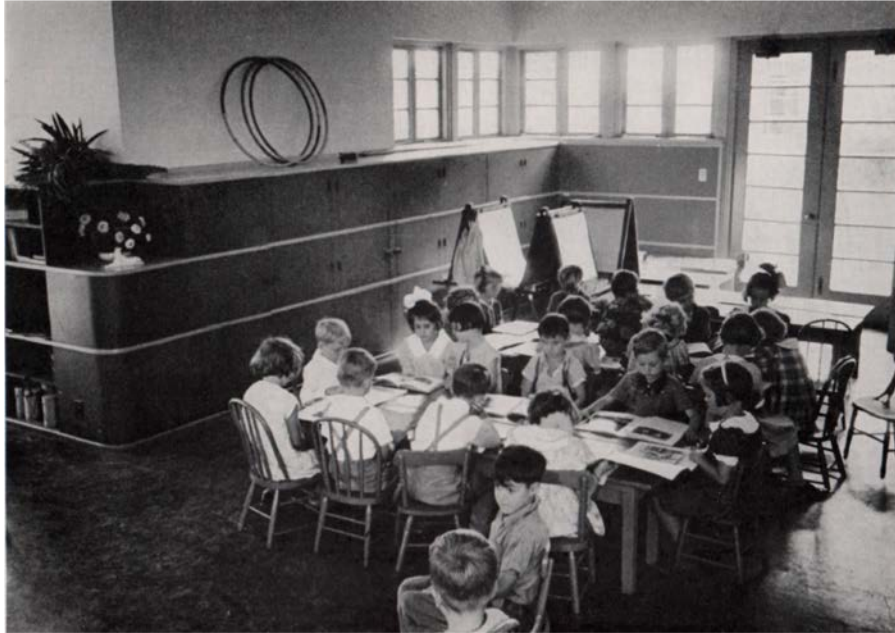


Brick Wall



"Theodore Roosevelt" Panel

Thank you!





SANTA MONICA-MALIBU UNIFIED SCHOOL DISTRICT

Roosevelt Elementary School Campus Improvement Project

California Environmental Quality Act (CEQA)
Compliance



SANTA MONICA-MALIBU UNIFIED SCHOOL DISTRICT



***California
Environmental
Quality Act***

CEQA Overview and Objectives

- Disclose to decision makers and the public the significant environmental effects of proposed activities
- Identify ways to avoid or reduce environmental damage and prevent environmental damage by requiring implementation of mitigation measures
- Disclose to the public reasons for the District's approval of projects
- Foster interagency coordination in the review of projects
- Enhance public participation



California



Environmental

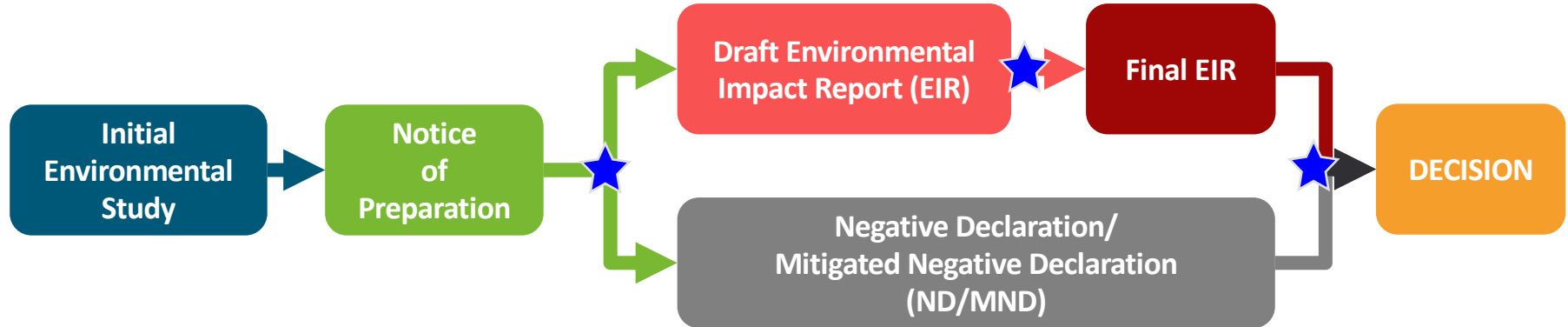


Quality



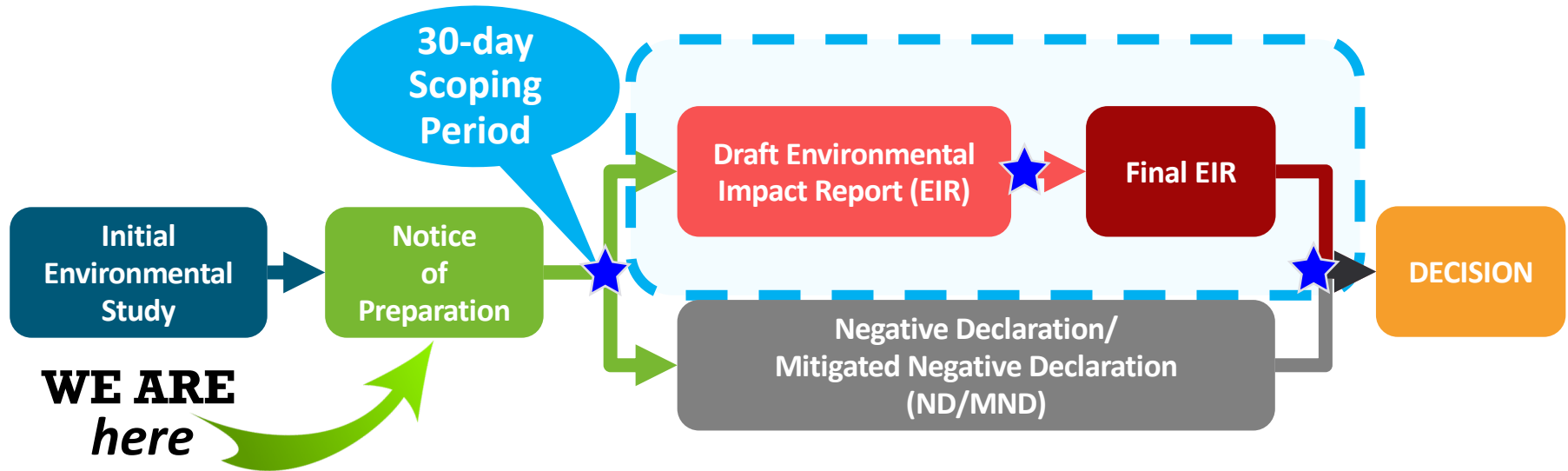
Act

Overview of CEQA EIR Process



*Represents a period where CEQA incorporates **Public Involvement** into the environmental review process.*

Overview of CEQA EIR Process



*Represents a period where CEQA incorporates **Public Involvement** into the environmental review process.*

30-Day Scoping Period/ Public Review of NOP/IS

**SCOPING
PERIOD:**

September 11 – October 20, 2023

- Notice of Preparation (NOP)
- Initial Study (IS), available at:

Online at District website:

<https://www.smmusd.org/Page/5595>

District Offices:

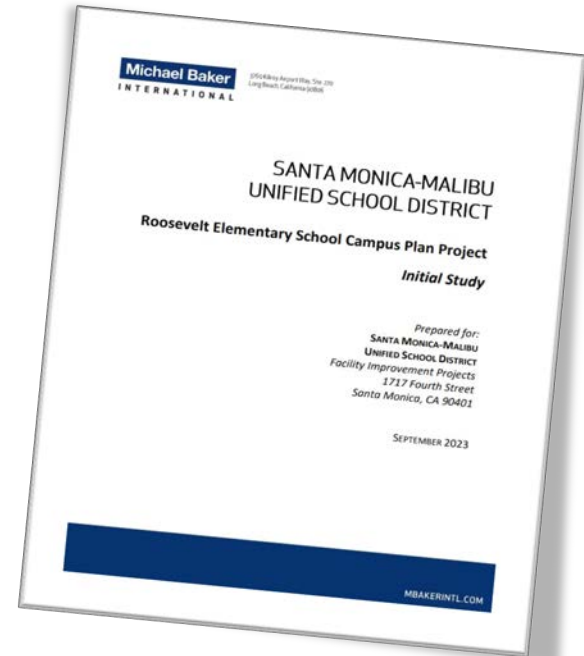
1717 Fourth Street, Santa Monica, CA 90401



Summary of the Roosevelt Elementary School Campus Plan Initial Study

Effects Found to be Less Than Significant and Will NOT be Studied Further in EIR (GREY TEXT = NO IMPACT)

- Agricultural Resources
- Biological Resources
- Hydrology and Water Quality
- Land Use and Planning
- Mineral Resources
- Population and Housing
- Public Services
- Recreation
- Utilities and Service Systems
- Wildfire



Summary of the Roosevelt Elementary School Campus Plan Initial Study

Topics that will be analyzed further in EIR:

Aesthetics

Air Quality

Cultural
Resources

Energy

Geology &
Soils

Greenhouse
Gases

Hazards &
Hazardous
Materials

Noise

Transportation

Tribal Cultural
Resources

Cumulative
Impacts



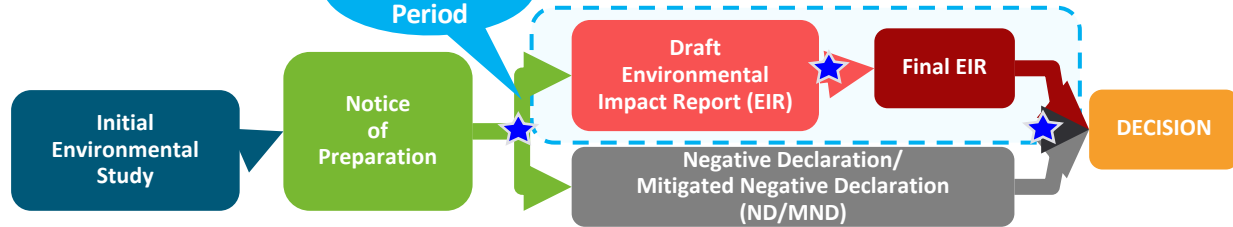
Next Steps

Submit Your Comments!

Comments accepted until Friday,
October 20, 2023 at 5 PM

**SCOPING
PERIOD:** September 11
to October 20, 2023

30-day
Scoping
Period



HOW TO SUBMIT COMMENTS:



**Verbal
Comments**

Speak up today!



**Comment
Cards**

*Turn in a written
comment card
to us here, today!*



**E-mail
Comments**

*E-mail Carey Upton
at:
Cupton@smmusd.org*



**Mail-in
Comments**

*SMMUSD
1717 Fourth Street
Santa Monica, CA 90401
Attn: Carey Upton*

Thank You





SANTA MONICA-MALIBU UNIFIED SCHOOL DISTRICT

Questions?