

June 21, 2021

Santa Monica-Malibu Unified School District

Historic Resource Inventory | Community Meeting

Franklin Elementary School



Architectural
Resources Group



Meeting Agenda

1. Introductions
2. Project Overview
3. Process
4. School Overview
5. Open Discussion



Santa Monica Malibu Unified Historic Resources Inventories

SMMUSD Board Adopted BP/AR 7133 – creates policy and procedures for treatment of potential historic resources

- Prepare Historic Resources Inventories for each campus
- Identify historic resources on District property prior to planning and design of new projects
- Expand educational opportunities about the history of SMMUSD facilities for students and communities
- Incorporating re-use and rehabilitation in planning efforts when it meets educational goals
- Commits the District to incorporating *Secretary of the Interior's Standards for the Treatment of Historic Properties with Guidelines for Rehabilitation*
- Informs future planning, design and environmental review

Process

For Each Campus:

- Review City of Santa Monica Historic Resources Inventory (HRI)
- Historic context development as needed
- Background research as needed
- Field inspections and integrity analysis
- Survey report
 - Inventory of historic resources
 - Character-defining features

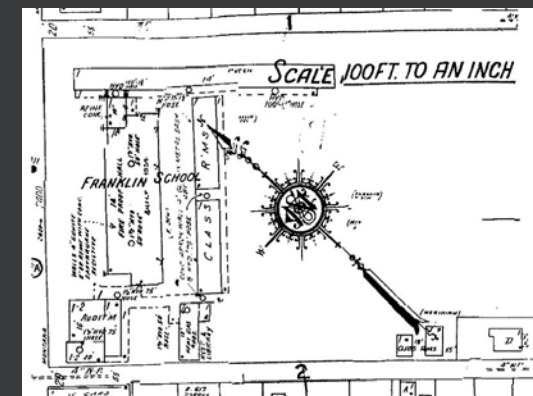
City of Santa Monica
HISTORIC RESOURCES INVENTORY UPDATE
HISTORIC CONTEXT STATEMENT
 March 2018

Architectural Resources Group
 HISTORIC RESOURCES GROUP

City of Santa Monica
Citywide Historic Resources Inventory Update
Survey Report

Prepared for:
 City of Santa Monica
 Planning and Community Development

Prepared by:
 Architectural Resources Group
 HISTORIC RESOURCES GROUP
 Los Angeles, California
 August 9, 2018



Over the Course of the Project:

- Collaboration between firms (ARG, HRG)
- Opportunities for public input/comment

Process (cont.)

Assessments will include:

- Buildings
- Site planning and landscape features
- Murals and artwork
- Other aspects of the built environment



School Overview

- First school on site built in 1924, designed by architect Francis D. Rutherford
- Damaged in the 1933 Long Beach Earthquake



Source (both): Santa Monica Public Library

School Overview (cont.)

- Reconstructed 1937 with funding from the Works Progress Administration
- Substantial additions made in 1948 and 1952
- Buildings designed in the Moderne and Modern styles by architects Marsh, Smith and Powell and H.L. Gogerty
- Modular and portable buildings added in subsequent years



Open Discussion

We'd love to hear more about what topics are important to you!



Source: Google Maps