

JAMS COMMUNITY PRESENTATION



- TODAY'S MEETING WILL BEGIN AT 5:30
- PLEASE MUTE YOUR COMPUTER OR PHONE DURING THE PRESENTATION SO THAT PARTICIPANTS CAN HEAR AND THERE ISN'T BACKGROUND NOISE.
- PLEASE ALSO FEEL FREE TO USE THE CHAT OPTION TO ASK QUESTIONS THROUGHOUT. THESE WILL BE ADDRESSED DURING QUESTIONS AND ANSWERS PORTION OF THE PRESENTATION
- THERE WILL BE QUESTIONS AND ANSWERS PERIODS DURING THE PRESENTATION AND AT THAT TIME YOU CAN UNMUTE YOURSELF.
- IF YOU DO NOT WISH FOR YOUR FACE TO BE INCLUDED ON THIS PUBLIC PRESENTATION, PLEASE FEEL FREE TO TURN OFF YOUR VIDEO.
- DURING QUESTIONS AND ANSWERS, THE SPEAKER WILL CALL YOUR NAME TO SPEAK/ASK YOUR QUESTION.

C O M M U N I T Y
P R E S E N T A T I O N

2 9 / O C T O B E R / 2 0 2 0



P R E S E N T E R S



**RICHARD
BERLINER**

BERLINER
ARCHITECTS



**MARK
HEMBREE**

BERLINER
ARCHITECTS



**GILMAR
CAMPOS**

BERLINER
ARCHITECTS



**MINAH
YEO**

BERLINER
ARCHITECTS



**ESTHER
MARGULIES**

OotDL
Office of the Designed Landscape

A G E N D A



- 1/ SMMUSD INTRODUCTION
- 2/ BERLINER INTRODUCTION
- 3/ RECAP OF WHAT WE HAVE LEARNED SO FAR
- 4/ SUMMARY OF PROPOSED PROJECTS
- 5/ QUESTION AND ANSWERS
- 6/ DESIGN OF STEAM COMPLEX TO REPLACE CLASSROOM BUILDING
- 7/ DESIGN OF 6TH GRADE COHORT
- 8/REINFORCING AXIS FROM ENTRANCE THROUGH CAMPUS
- 9/ LIBRARY /COURTYARD REDESIGN
- 10/ EIGHTH GRADE COURTYARD
- 11/ REDESIGN OF MAIN QUAD
- 9/ REDESIGN OF CAFETERIA AND OUTDOOR DINING AREA
- 13/ SECONDARY ENTRANCE
- 14/ SUMMARY
- 15/ QUESTIONS AND ANSWERS

GENERAL DESIGN PRINCIPLES AND APPROACH

VISIONING WORKSHOPS AND GOALS

- SMMUSD Ed Spec



COLLABORATIVE + FLEXIBLE SPACES (WHOLE CHILD APPROACH AND SMALL LEARNING COMMUNITIES)

- Classroom Clusters/Learning Centers
- Co-Location of Same Grade Classrooms
- Agile and PBL Classrooms
- Flexibility and Mobility
- Independent and Small Group Learning



CAMPUS IDENTITY, CONNECTING SPACES, WAYFINDING AND BRANDING (INCREASED SCHOOL UTILIZATION AND EASE OF USE FOR THE LARGER COMMUNITY)

- Defined Campus Adjacencies
- Building Connections and Community
- Outdoor Learning and Intermediate Spaces
- Safety and Access



ENGAGING OUTDOOR SPACES (HEALTH AND WELLNESS, SUSTAINABILITY AND EXTENDED LEARNING)

- Outdoor Learning and Intermediate Spaces
- Breakout Spaces
- Healthful Opportunities for Mind-Body Balance



CENTRAL GATHERING SPACE “QUAD” (CAMPUS COHERENCE AND IDENTITY)

- Community and Connection
- Identity and Ownership



MULTI-PURPOSE DINING/CAFÉ (HEALTH AND WELLNESS)

- Twenty-first century cafe as enriching space
- Connections to Outside



MAKER SPACES FOR STUDENTS & COMMUNITY (NEXT GEN SCIENCE AND PBL)

- Science and Flexible Maker/STEM Labs
- Teaming Studios- Flexible, Action-Based Spaces



SPACES FOR TEACHERS (PROFESSIONAL LEARNING COMMUNITIES)

- Professional and Collaborative Spaces
- Teacher and Staff Workrooms



FLEXIBLE LIBRARY (ACTIVE AND ROBUST LEARNING CENTER/RESOURCE)

- Library as Social Center and Hub
- Furniture Flexibility and Connection to Outside
- Street-Side Access



VARIETY OF GATHERING SPACES (WHOLE CHILD APPROACH)

- Intermediate Spaces for Independent and Small Group Learning
- Outdoor Learning and Intermediate Spaces



PLACES FOR DISPLAY ON CAMPUS (SUPPORT FOR PROJECT-BASED DELIVERY)

- Student Centered and Project Based Learning
- Arts Integration

PRIMARY FOCUS PROJECTS

- Design of the New STEAM Complex
- Design of the 6th Grade Cohort
- Reinforcing Axis from Entrance through the Campus
- The Library and Courtyard Redesign
- Eight Grade Courtyard
- Redesign of Main Quad
- Redesign of Cafeteria and Outdoor Dining Area
- Secondary Entry

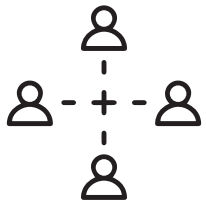
LONG RANGE PROJECTS

- Future Gym Building
- Future Relocation of Music Building
- Consolidation of Parking
- Future Relocation of Pre-School



COLLABORATIVE + FLEXIBLE SPACES (WHOLE CHILD APPROACH AND SMALL LEARNING COMMUNITIES)

- Classroom Clusters/Learning Centers
- Co-Location of Same Grade Classrooms
- Agile and PBL Classrooms
- Flexibility and Mobility
- Independent and Small Group Learning



CAMPUS IDENTITY, CONNECTING SPACES, WAYFINDING AND BRANDING (INCREASED SCHOOL UTILIZATION AND EASE OF USE FOR THE LARGER COMMUNITY)

- Defined Campus Adjacencies
- Building Connections and Community
- Outdoor Learning and Intermediate Spaces
- Safety and Access



ENGAGING OUTDOOR SPACES (HEALTH AND WELLNESS, SUSTAINABILITY AND EXTENDED LEARNING)

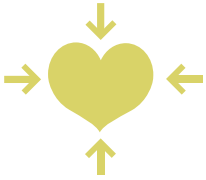
- Outdoor Learning and Intermediate Spaces
- Breakout Spaces
- Healthful Opportunities for Mind-Body Balance





CENTRAL GATHERING SPACE “QUAD” (CAMPUS COHERENCE AND IDENTITY)

- Community and Connection
- Identity and Ownership



MULTI-PURPOSE DINING/CAFÉ (HEALTH AND WELLNESS)

- Twenty-first century cafe as enriching space
- Connections to Outside



MAKER SPACES FOR STUDENTS & COMMUNITY (NEXT GEN SCIENCE AND PBL)

- Science and Flexible Maker/STEM Labs
- Teaming Studios- Flexible, Action-Based Spaces

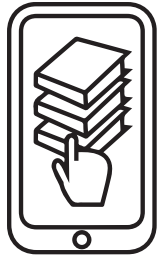
2020.10.29





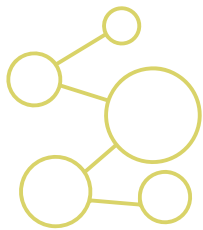
SPACES FOR TEACHERS (PROFESSIONAL LEARNING COMMUNITIES)

- Professional and Collaborative Spaces
- Teacher and Staff Workrooms



FLEXIBLE LIBRARY (ACTIVE AND ROBUST LEARNING CENTER/RESOURCE)

- Library as Social Center and Hub
- Furniture Flexibility and Connection to Outside
- Street-Side Access



VARIETY OF GATHERING SPACES (WHOLE CHILD APPROACH)

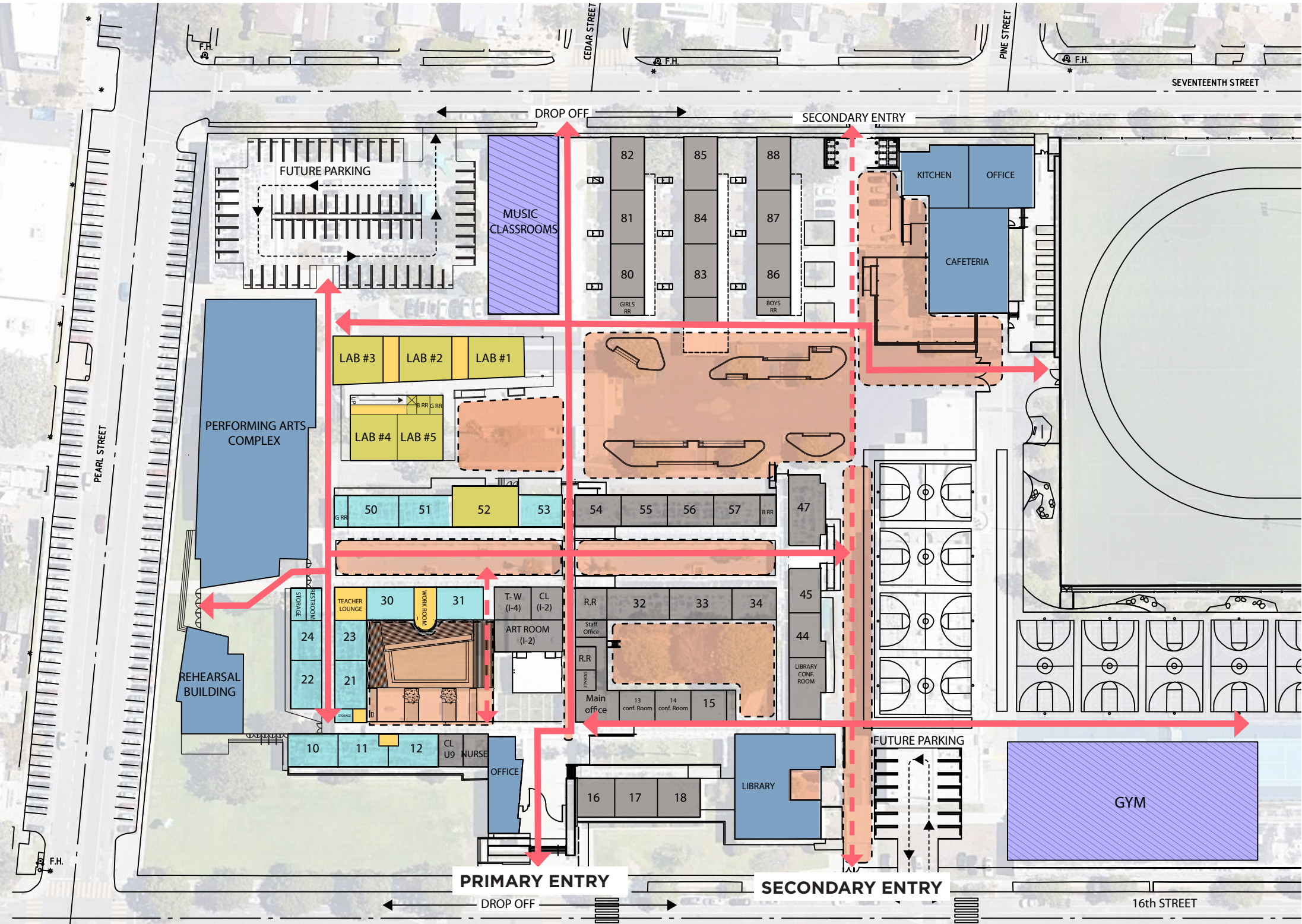
- Intermediate Spaces for Independent and Small Group Learning
- Outdoor Learning and Intermediate Spaces



PLACES FOR DISPLAY ON CAMPUS (SUPPORT FOR PROJECT-BASED DELIVERY)

- Student Centered and Project Based Learning
- Arts Integration





PRIMARY FOCUS PROJECTS

- Design of the New STEAM Complex
- Design of the 6th Grade Cohort
- Reinforcing Axis from Entrance through the Campus
- The Library and Courtyard Redesign
- Eighth Grade Courtyard
- Redesign of Main Quad
- Redesign of Cafeteria and Outdoor Dining Area
- Secondary Entry

LONG RANGE PROJECTS

- Future GYM Building
- Future Relocation of Music Building
- Consolidation of Parking
- Future Relocation of Pre-School

QUESTIONS?

SHARED USE STEAM 6TH GRADE COHORT FUTURE MUSIC & GYM EXISTING CLASSROOMS OUTDOOR SPACES CAMPUS CONNECTIONS

NEW STEAM COMPLEX FIRST FLOOR

5 / LABS

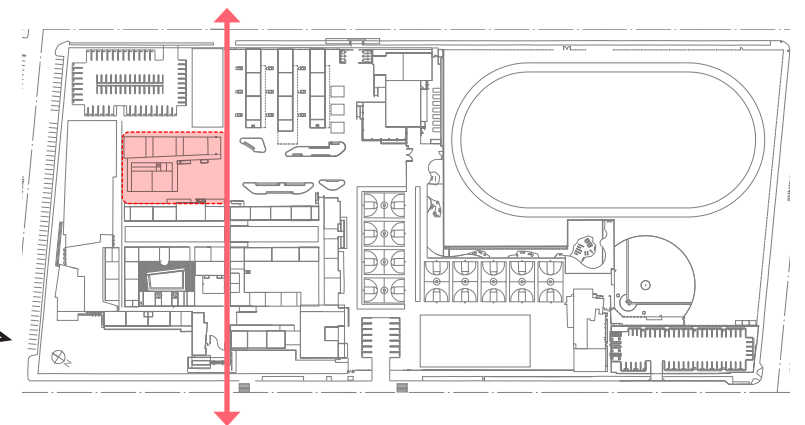
3/ DEDICATED OFFICE/STORAGE SPACES FOR TEACHER USE

FLEXIBILITY

- Flexible furniture that can be arranged to accommodate individual learning as well as team work and can adapt to different size classrooms.
- (2) moving partitions to expand learning environment into two classrooms.
- Larger high tables on casters that can be moved around depending on the project.
- Furniture can be moved out to the Science Porch for projects.
- Standardized furniture so when classrooms open up to each other they feel like one large classroom.

OUTDOOR SPACE

- Covered science porch for displays and lectures.
- Garage doors that open towards the deck walkway for extension of classroom to the outdoors.
- Outdoor lab counters and sinks
- Demonstration and learning gardens and bioswales
- Porch steps informal seating
- Stormwater green infrastructure
- Heat Island reduction from Shade Trees and Vegetation



NEW STEAM COMPLEX SECOND FLOOR

4 / LABS

2/ DEDICATED OFFICE/STORAGE SPACES FOR TEACHER USE

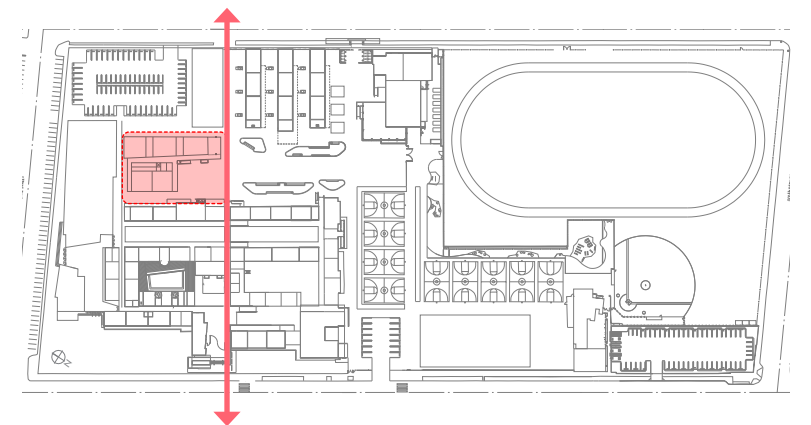
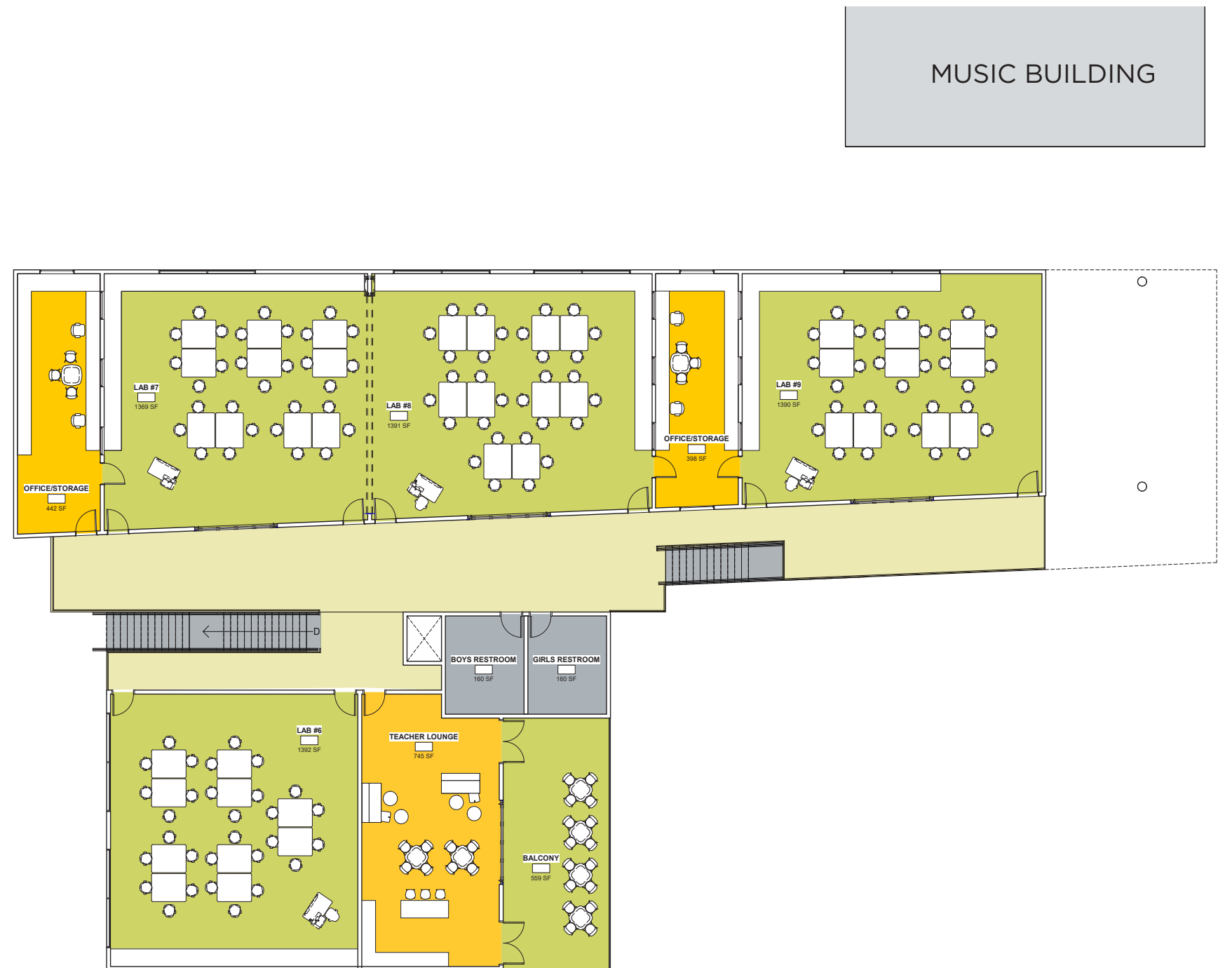
1/ TEACHER LOUNGE

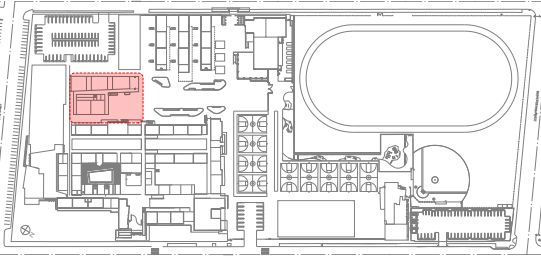
FLEXIBILITY

- Flexible furniture that can be arranged to accommodate individual learning as well as team work and can adapt to different size classrooms.
- Larger high tables on casters that can be moved around depending on the project.
- Furniture can be moved out to the Science Porch for projects.
- Standardized furniture so when classrooms open up to each other they feel like one large classroom.

OUTDOOR SPACE

- Covered balcony for displays and lectures.
- Garage doors that open towards the balcony for extension of teachers lounge





2020.10.29



SMMUSD JAMS MIDDLE SCHOOL

BERLINER
ARCHITECTS

6TH GRADE COHORT

13 CLASSROOMS

- (6) moving partitions
- (1) Science Classroom

1 TEACHER LOUNGE

- Small kitchen
- Soft seating

2 TEACHER OFFICES

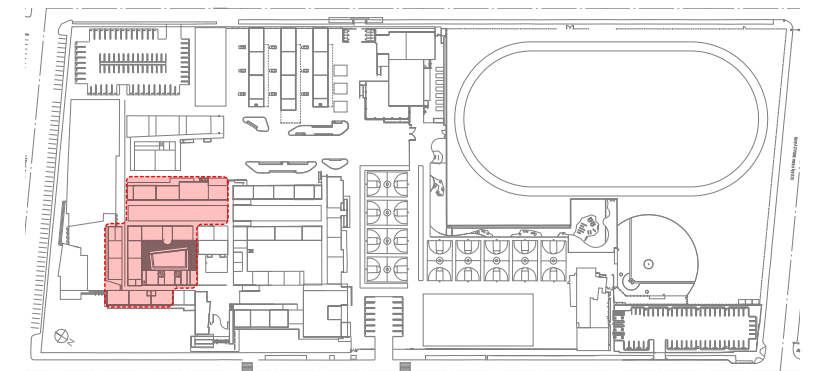
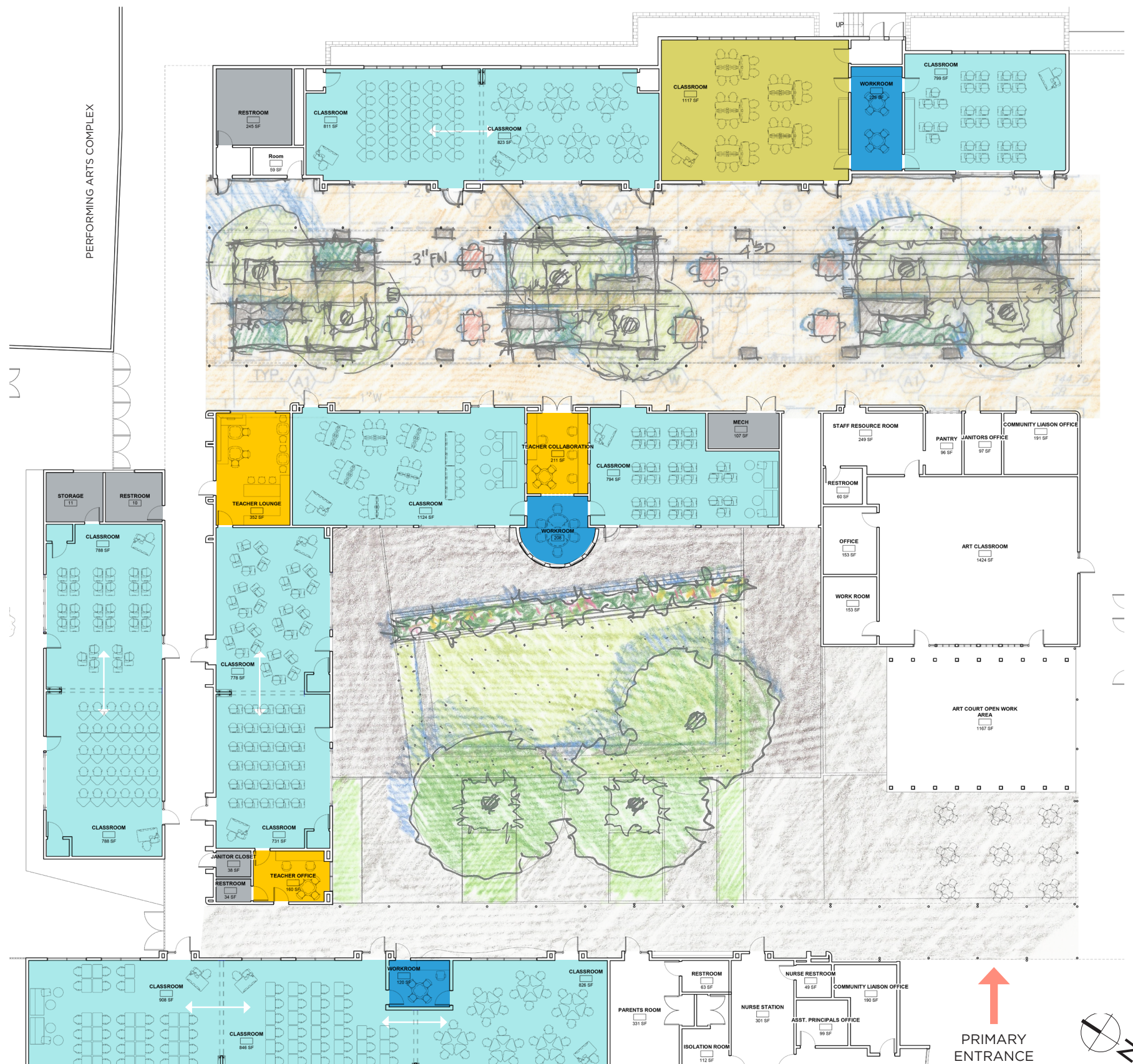
- 3-4 working spaces

3 BREAKOUT SPACES

- 8-10 students each

EXTERIOR COURTYARD

- Courtyards with Collaboration spaces.
- Pass through between 6th grade courtyard and linear courtyard.
- Glazing to maximize transparency.
- Garage doors that open towards the entry courtyard creating outdoor learning spaces.



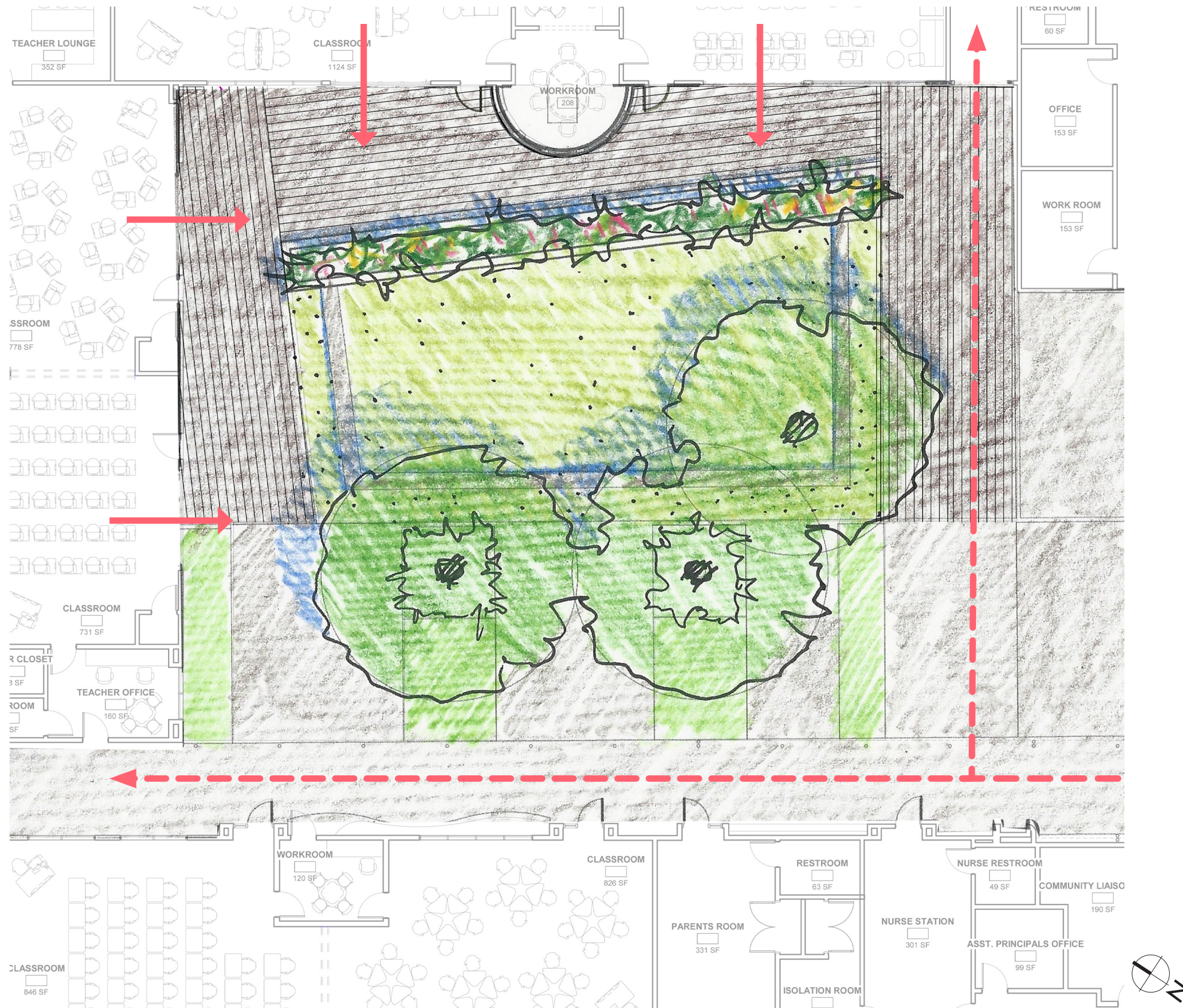
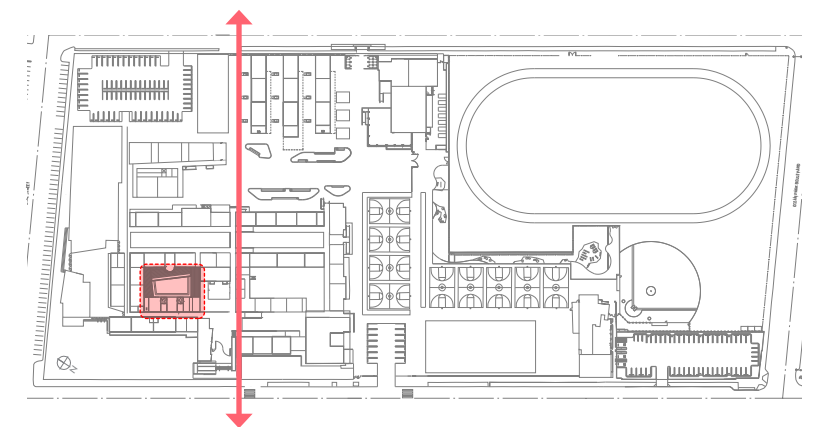
6TH GRADE COHORT COURTYARD

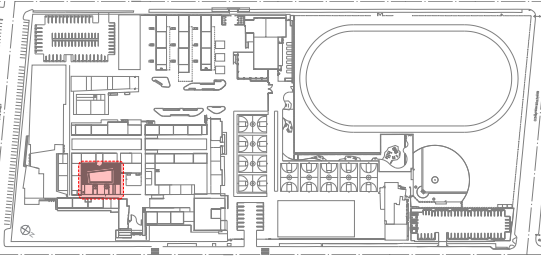
OUTDOOR SPACE

- Garage doors that open towards the courtyard creating outdoor learning spaces.
- Perimeter deck provides outdoor space for classes, gatherings and performances.
- Seating along perimeter of lawn.

SITE IMPROVEMENTS

- Gradual multi use lawn slopes from existing paving to raised planter for seating and other uses.
- Large shade trees provide shaded seating and reduce heat island.
- Shaded seating in existing plaza.
- Pass through between 6th grade courtyard and linear courtyard.





2020.10.29



SMMUSD JAMS MIDDLE SCHOOL

BERLINER
ARCHITECTS

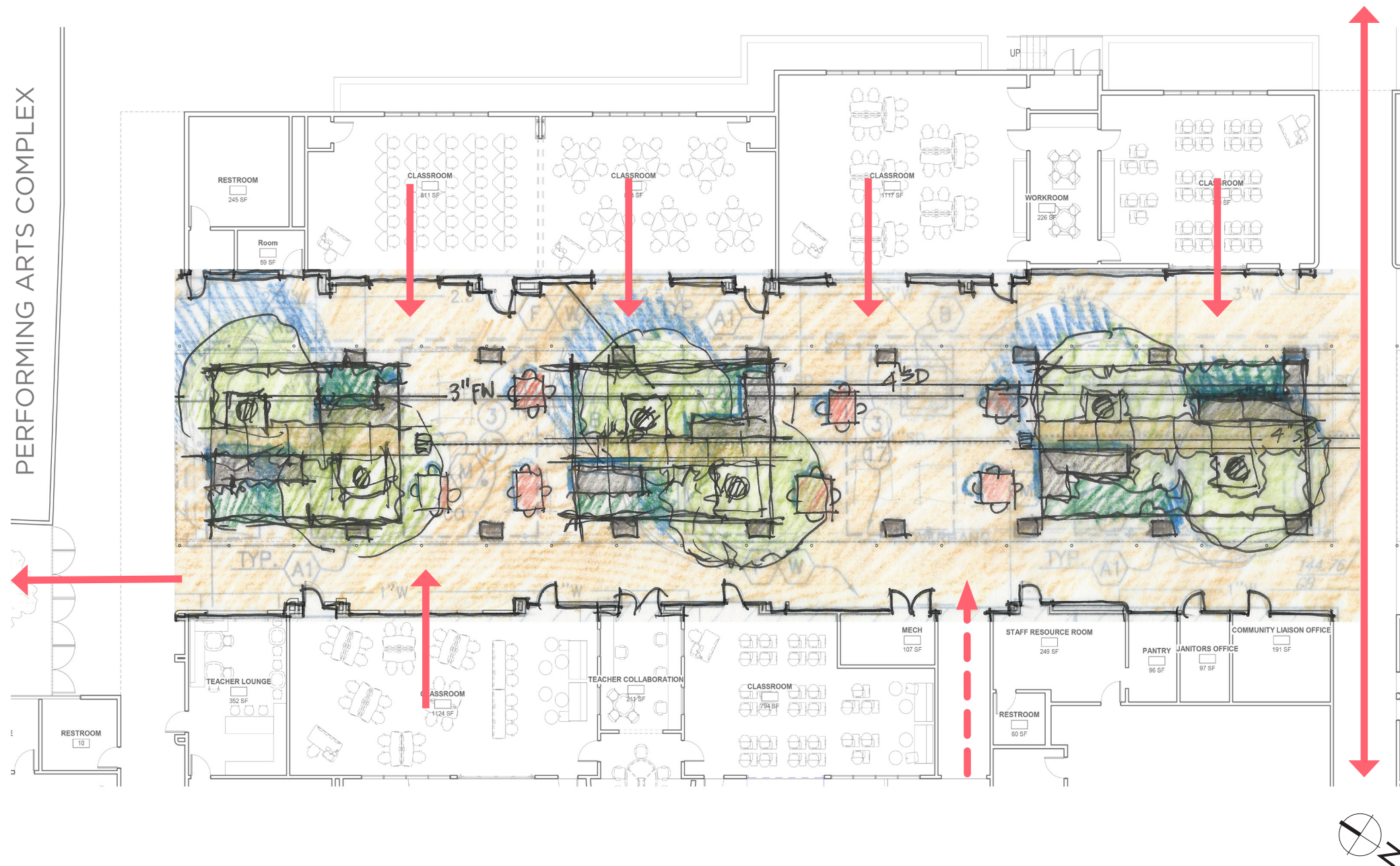
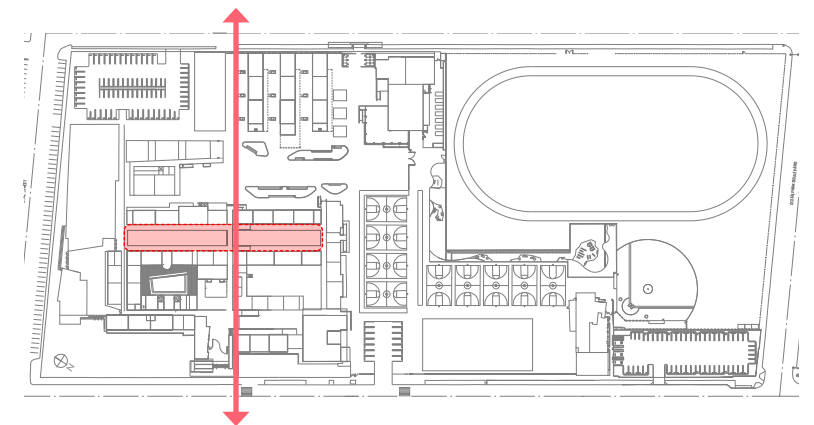
LINEAR COURTYARD

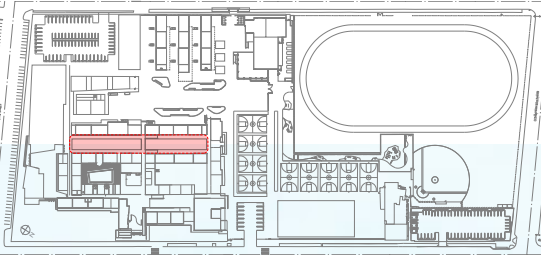
OUTDOOR SPACE

- Garage doors that open towards the courtyard creating outdoor learning spaces.
- Fixed and movable seating for classroom and casual uses.

SITE IMPROVEMENTS

- Reduced paving/increased planting area to reduce heat island and glare.
- Planting areas provide bio swale filtration and permeability.
- New large shade trees provide shaded seating areas and can reduce GHG emissions produced in cooling.
- Increased bio diversity in planting areas.



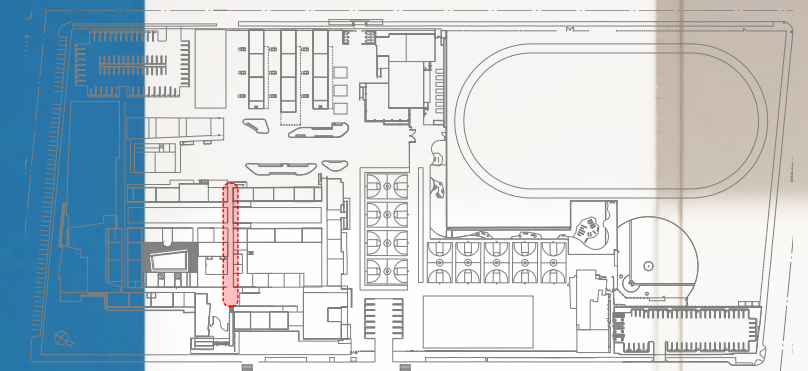
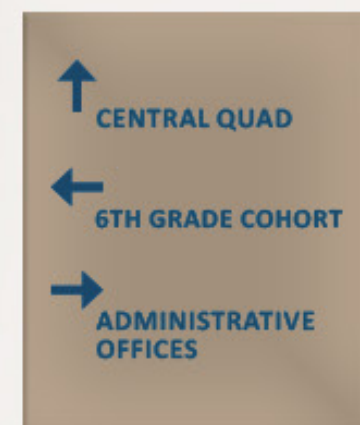


2020.10.29

CAMPUS ENTRY

WELCOMING APPROACH

- Create openings along main axis walkway canopy in order to provide natural light and define path.
- Create mural along pathway to enforce main axis and as part of new campus wayfinding.



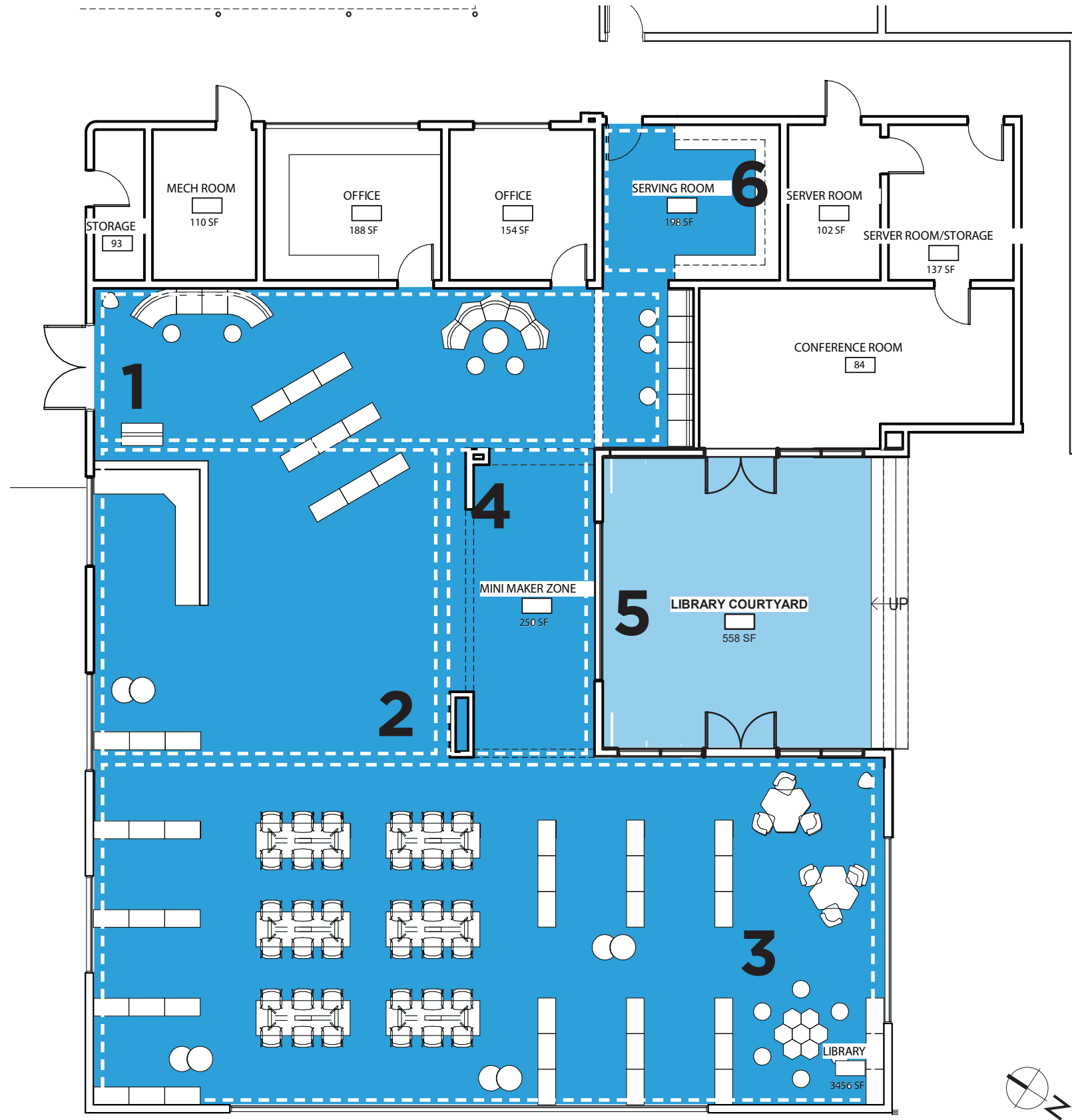
2020.10.29

JAMS

SMMUSD JAMS MIDDLE SCHOOL

BERLINER
ARCHITECTS

LIBRARY

**1 / ENTRANCE GALLERY**

- Display of books and recent student work

2 / BREAKOUT SPACE

- Flex space for additional book display, if needed
- Can serve as 'breakout' space for the mini maker zone

3 / FLEX SPACE

- (2) moving partitions
- Tables that easily fold
- SMART screen (existing)

4 / MINI MAKER LAB

- Small project space
- Scissors/paper/2D & small 3D making

5 / EXTERIOR COURTYARD

- Lunch tables
- Messy table

6 / KITCHEN

- Minimal upgrades
- Working sink!

7 / OVERALL IMPROVEMENTS

- Assisted hearing + speakers
- Pinnable Wall Space along edges

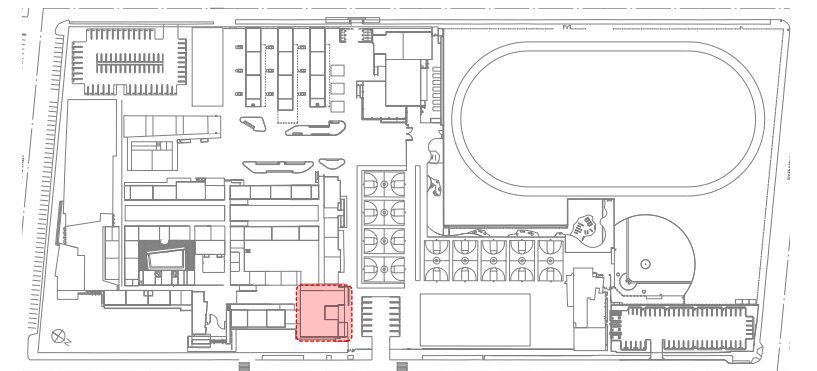
LOW HEIGHT BOOK DISPLAY

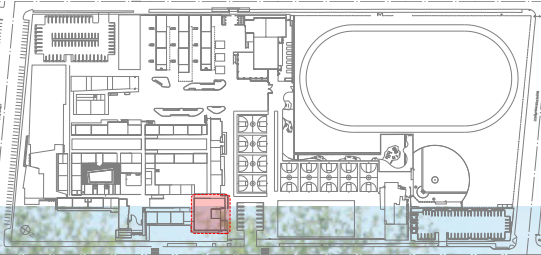


SOFT LOUNGE



TABLE SEATING

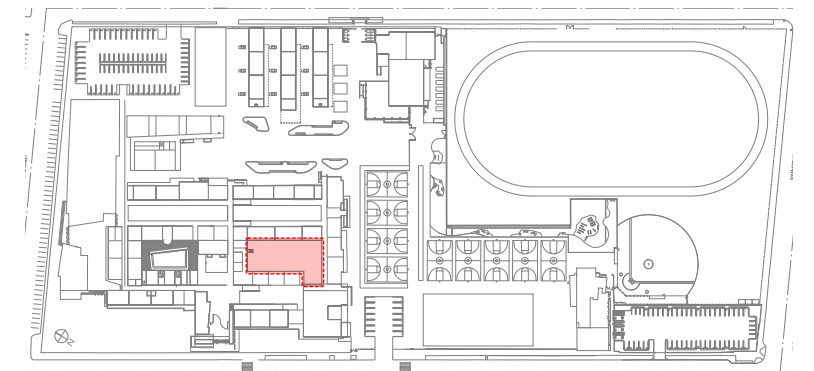




8TH GRADE COURTYARD

SITE IMPROVEMENTS

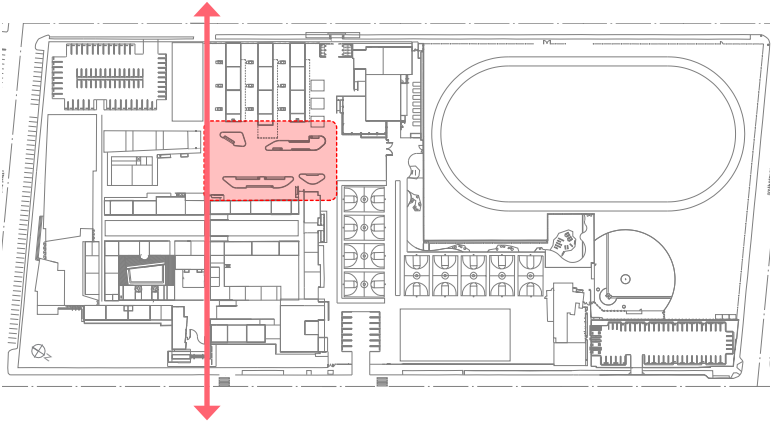
- Preserve Mature Ash trees
- Minimize new paving in tree rootzones
- Provide accessible walkway to courtyard
- Provide seating in the shade of the trees
- Replace turf in shade areas with more shade tolerant and permeable planting
- Renovate existing planting and irrigation

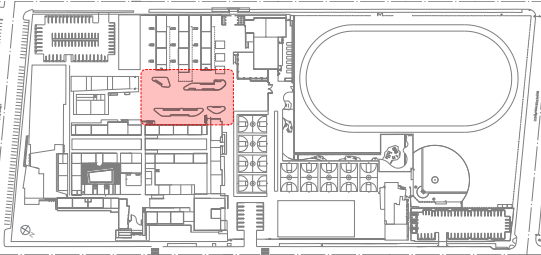


CENTRAL QUAD

SITE IMPROVEMENTS

- Consolidated planters with native planting to increase shade and bio diversity.
- Solar reflective paving coating over existing asphalt and additional shade trees to reduce heat island.
- Potential storm water collection and re-use in campus cistern.
- Built in seating for campus wide events and a variety of seating options for casual student gatherings.
- New pavers adjacent to STEAM building porch in order to indicate primary entry and pathway.





2020.10.29



SMMUSD JAMS MIDDLE SCHOOL



CAFETERIA

FLEXIBILITY

- Private dining room for students requiring more intimate dining space, which can also accommodate private meetings.
- Various seating arrangement, between large lunch bench seating to round banquet seating layout to lounge seating clusters in the middle, providing freedom of choice to students that they find comfortable.

OUTDOOR SPACE

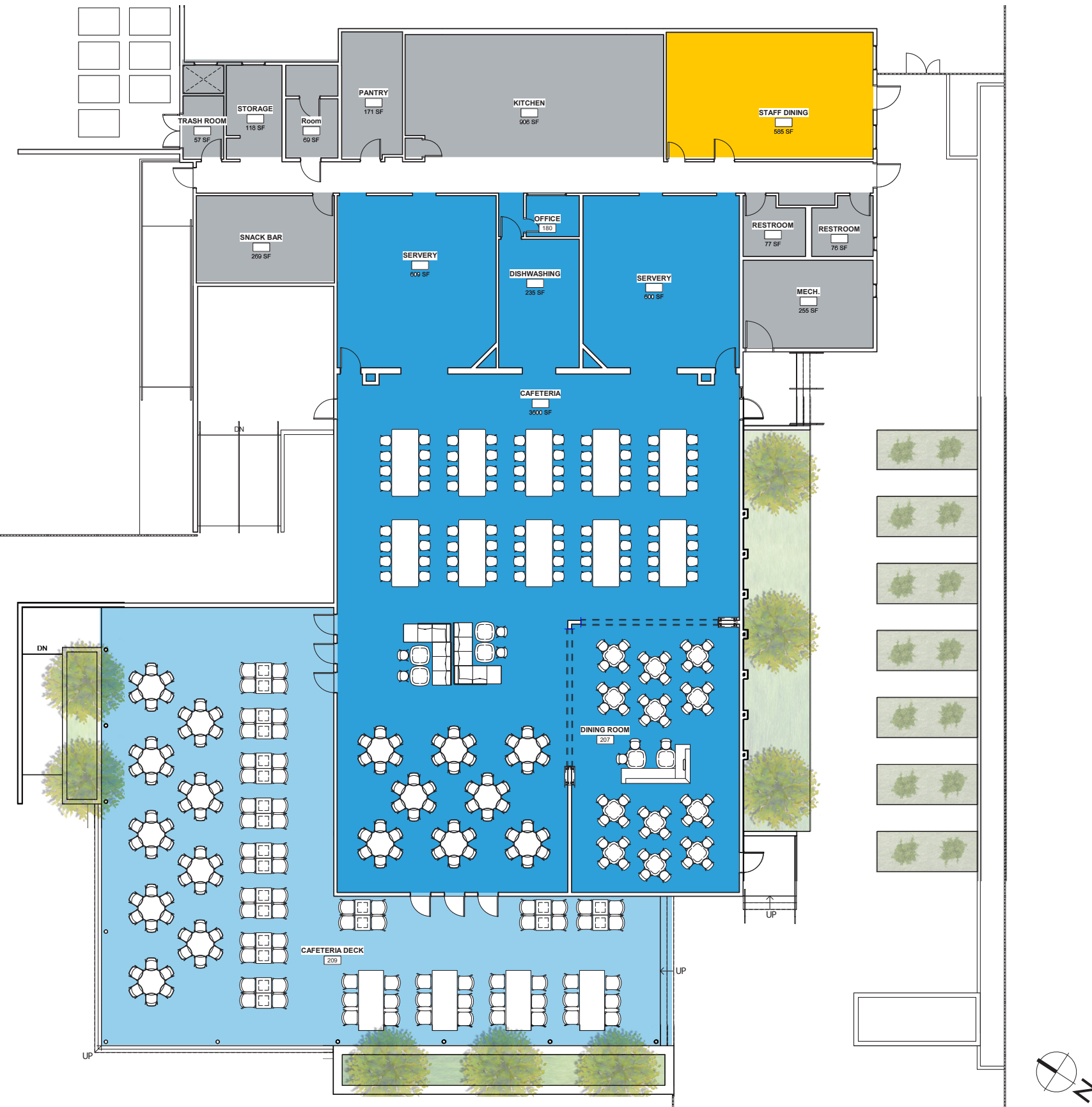
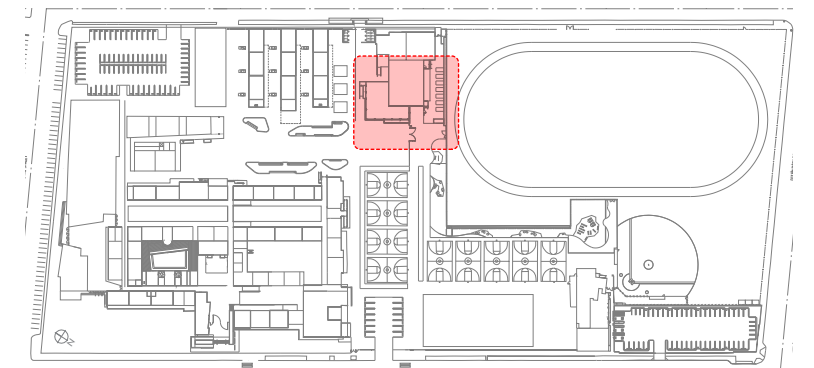
- Outdoor dining porch set up with both round tables and square tables. Square tables can be brought together or pulled apart as needed to allow students to gather in bigger or smaller groups.
- Trellis to run along the outdoor deck area and attached solar panels to provide shade and store energy for school electricity use.

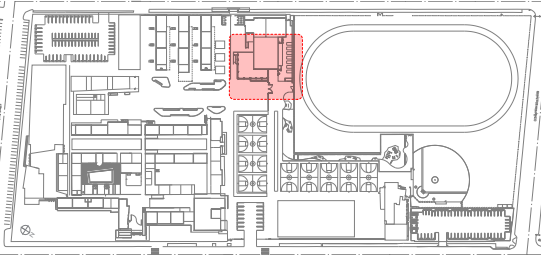
SITE IMPROVEMENTS

- Large shade trees, within planters to provide shade and reduce heat island.
- Existing garden planters to remain.



PREVIOUS

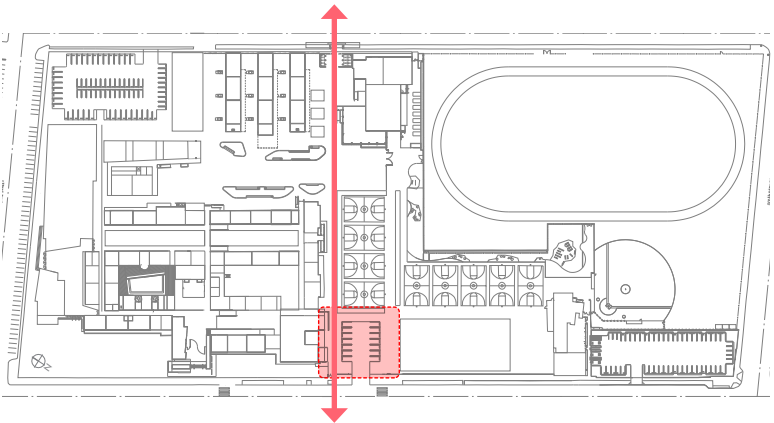
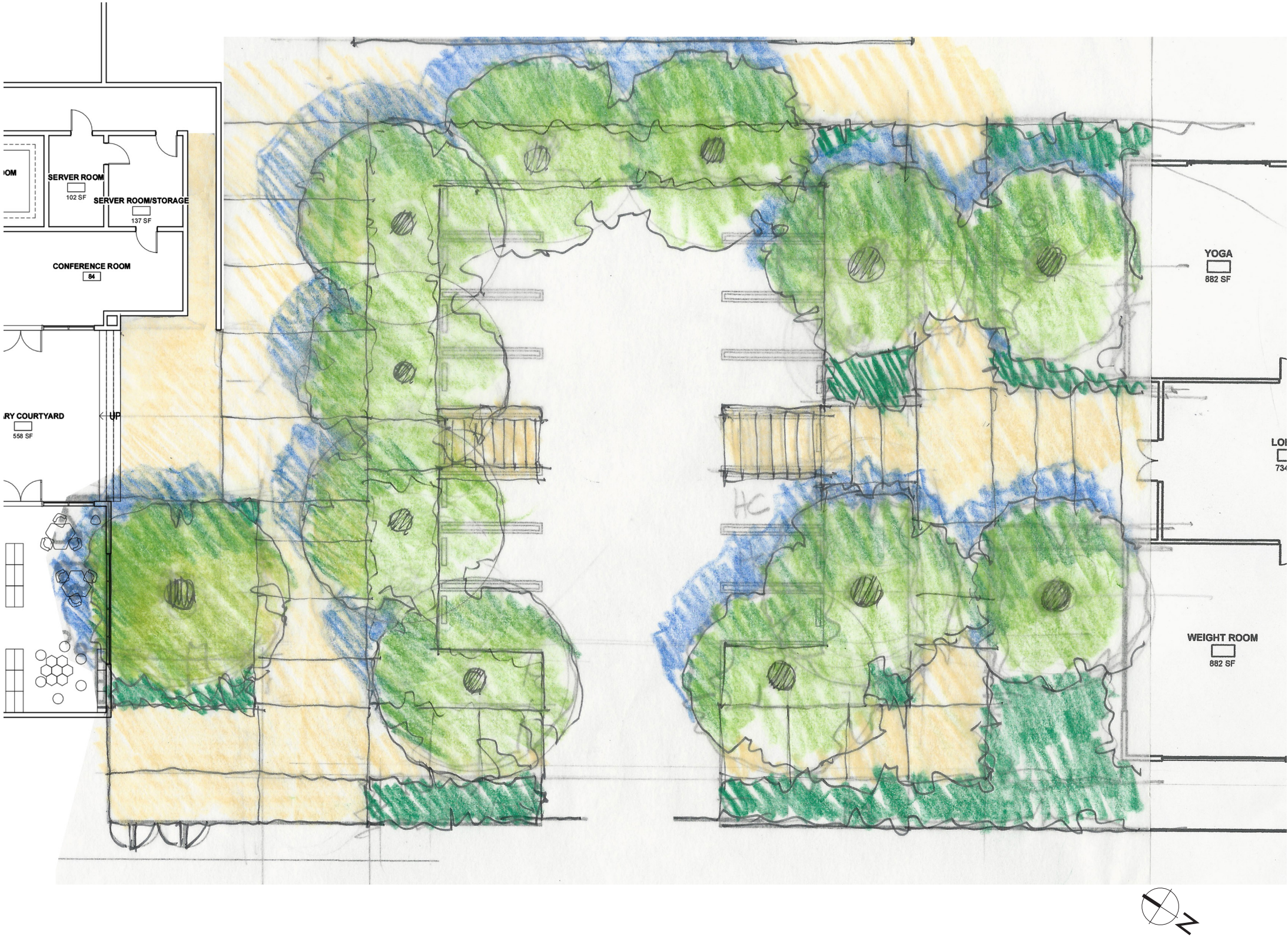




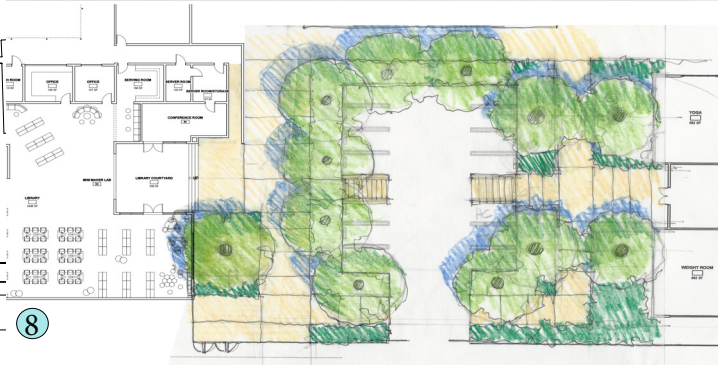
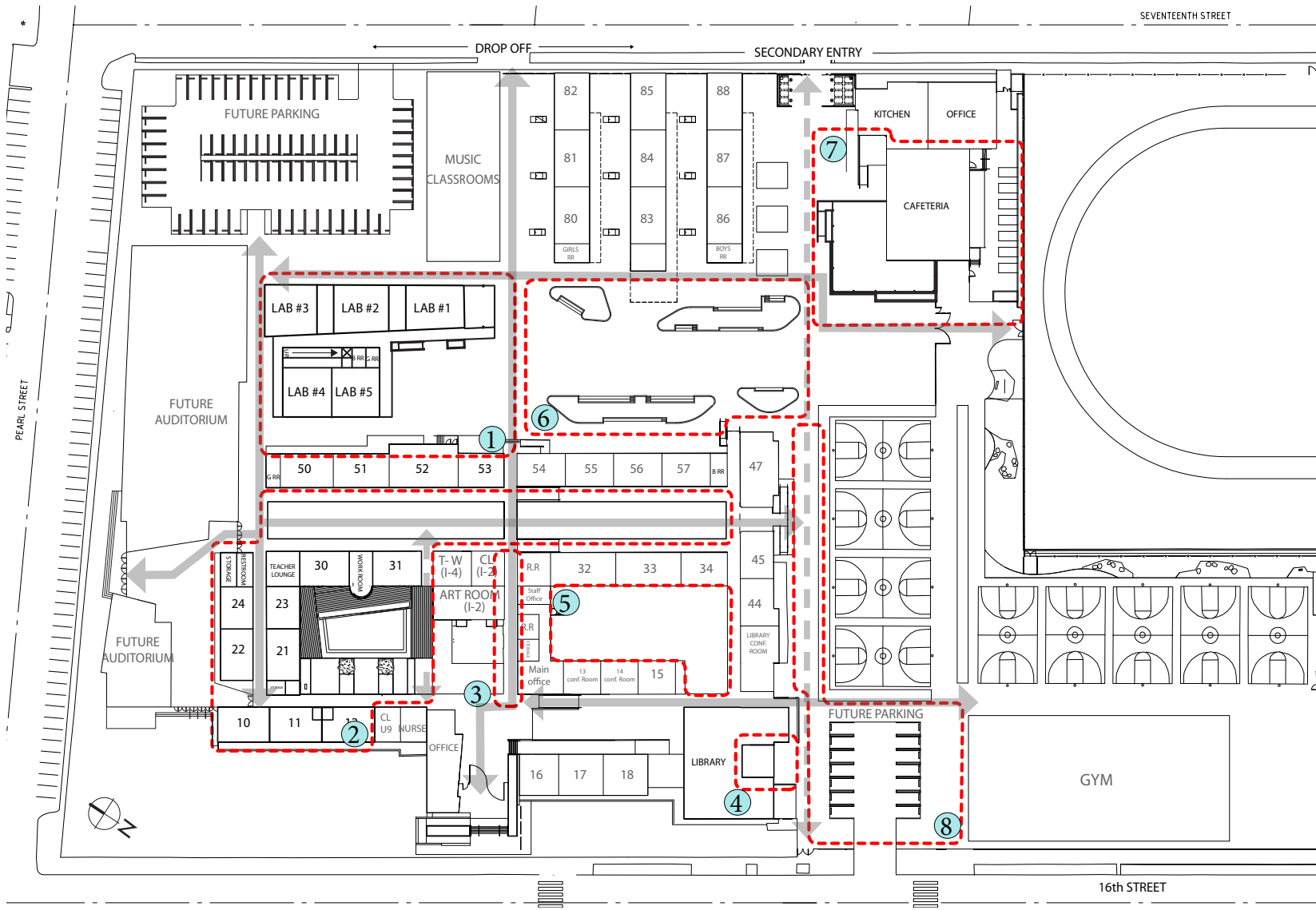
SECOND ENTRY
16TH STREET

SITE IMPROVEMENTS

- Provide Shade over parking pavement and walkways.
- Provide walkways to gym and library from parking lot.
- Provide planting on perimeters of parking lot and buildings to increase permeable areas.



2020.10.29





**RICHARD
BERLINER**



**MARK
HEMBREE**



**GILMAR
CAMPOS**



**MINAH
YEO**



**ESTHER
MARGULIES**

JAMS COMMUNITY PRESENTATION

thank you!

2020.10.29



SMMUSD JAMS MIDDLE SCHOOL

BERLINER
ARCHITECTS