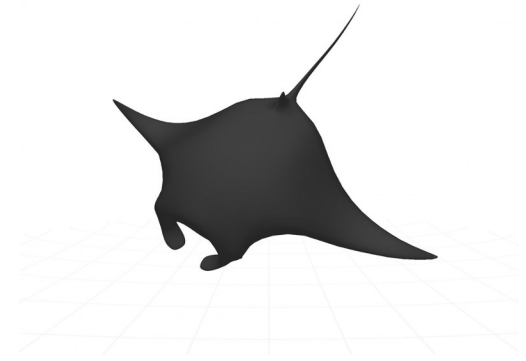




# WELCOME INCOMING 6TH GRADE PARENTS!





## Who's Who At Malibu Middle School:

**Counselor:**  
Mrs. Whitehouse



**Principal:**  
Ms. Andino





# What Makes MMS Great?

- Small School Atmosphere
- **School Pride:** Lunchtime Activities, Dances, Clubs, New Student Lunch, Spirit Weeks, Pep Rallies
- **Positive Promotion:** CJSF, Student of Month, Spirit Raffles
- Wellness Center on campus
- Great families





# What Makes MMS Great?

- Arts, Music, Service Learning
- Clubs- Robotics, [E-Sports](#), Baking, Journalism, Mental Health, Changes yearly
- Malibu Boys' and Girls' Club/Teen Center
- **Field Trips:** Grade 6: Getty Villa, Grade 7: Ropes Course, Grade 8: Holocaust Museum, CJSF: Universal Studios





# A Day in the Life of a MMS 6th Grader

## Monday/ Tuesday:

Period 1: 8:40-9:30

Period 2 : 9:35-10:30

**Nutrition: 10:30-10:45**

Period 3: 10:50-11:35

**Lunch: 11:35-12:10**

Period 4: 12:15-1:00

Period 5: 1:05-1:50

Period 6: 1:55-2:45

Period 7\*: 2:50-3:35

\*OPTIONAL

## Wednesday/Thursday (Block Schedule):

Period ½: 8:40-10:10

**Nutrition: 10:10-10:25**

Period ¾: 10:30-12:00

**Lunch: 12:00- 12:35**

Support: 12:40- 1:10

Period 5/6: 1:15-2:45

Period 7\*: 2:50-3:35

## Friday (Minimum day):

Period 1: 8:40-9:20

Period 2: 9:25 -10:05

Period 3: 10:10-10:50

**Lunch: 10:50- 11:20**

Period 4: 11:25-12:05

Period 5: 12:10-12:50

Period 6: 12:55-1:35







# 6th Grade Required Classes

## 1. Humanities

- a. Language Arts: (Reading, Writing, Grammar, Listening)
- b. Social Studies: (Ancient Civilizations)

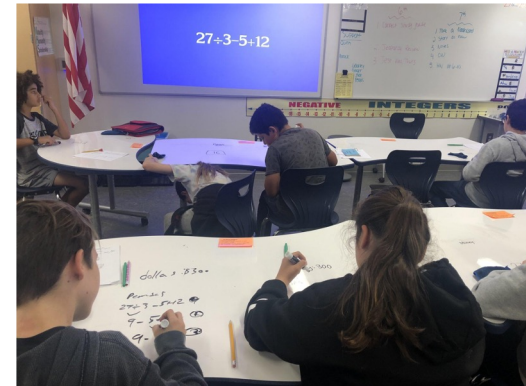
## 2. **Math** (Ratios, Proportional Relationships, Number System, Expressions and Equations, Geometry, Statistics and Probability)

## 3. **Science** (Focus On Earth Science, Scientific Concepts, Hands-on labs)

## 4. **Physical Education** (Physical and Social Experience)

## 5. **Elective**

## 6. **Support** (Block schedule days only)





# 6<sup>th</sup> Grade Elective Choices:

- **Choir:** Anyone can join this singing course
- **Band:** Instrument options include Flute, Oboe, Clarinet, Bassoon, Saxophones, Trumpet, French Horn, Trombone, Baritone, Tuba, Percussion, Guitar, and Bass
- **Orchestra:** Learn to play string instruments including violin, viola, cello, or bass







# 6th Grade Electives:

- **Exploratory:** This is a year long course broken down into rotations. Classes in this rotation may include: Art, Music, or Decisions
- **Theatre Arts\*:** After school (7<sup>th</sup> period) class meets 4x per week **in addition** to elective you choose during the school day.







# AFTER SCHOOL ACTIVITIES

## On MMS Campus:

- After school drop-in tutoring in Library with a Middle School Math teacher. 2:45-3:35
- After school drop-in tutoring in Library with Math and English teachers available.
- Enrichment: varied topics

## Partnership Programs

- Boys & Girls Club/Teen Center

## City of Malibu Sports Programs

- Basketball
- Tennis
- Volleyball
- Running/Conditioning
- Swimming/Water Polo





# How to Get Involved as a Parent

- PTSA
- Shark Fund
- School Site Council
- Friendly Faces
- Volunteer
- POMS (Parents of Middle Schoolers casually meet with the Principal and Counselor)
- Use of Aeries
- Stay in communication with your child's teacher
- Read the Monday Message



# Questions?



**We will meet with your students to review this same material and give them a form to complete at home with you in February.**

**We can't wait to see your children for our spring (March) tour of Malibu Middle School!**

